

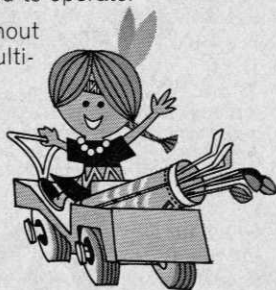
# Forget about Pow-Wow batteries...

until you  
install new ones.

Buy Gould Pow-Wow Batteries and forget about trouble. Forget about embarrassing breakdowns on the course. Remember how little each round it costs you to operate.

Gould Pow-Wow—it's built to take shock, vibration and abuse without a trace of tiring, without shedding any of its native drive. New, multi-cycle grids are 37% heavier to resist overcharge and abuse, last longer. Plates are 12% larger, give more power, more holes of worry-free performance.

When we speak of Pow-Wow, we speak not with forked tongue. We back it with a 6-month's warranty, plus pro-rata guarantee, your guarantee of performance. Insist on the Pow-Wow battery—you can forget about—in your golf cars. Ask your golf car dealer for Pow-Wow. *Gould-National, Automotive Battery Division, First National Bank Building, St. Paul, Minnesota 55101.*



**BATTERY  
POWER**

Associate member of American Golf Car Manufacturers Association

For more information circle number 219 on card

# say goodbye

## to these weed and disease pests in your turf—

with **Dacthal®** herbicide you get  
pre-emerge control of these weeds  
and grasses:

Annual bluegrass	Foxtail
Barnyard grass	Goosegrass
Browntop panicum	Lovegrass
Carpetweed	Purslane
Chickweed	Spurge
Crabgrass	Stinkgrass
Fall panicum	Texas millet
Florida pussley	Witchgrass

with **Dacamine®** you can kill these  
weeds once and for all:

Bindweed	Nettle
Bitterweed	Pennycress
Broomweed	Pennywort
Carpetweed	Peppergrass
Chickweed	Plantain
Chicory	Poor Jo
Croton	Puncture Vine
Dandelion	Ragweed
Dock	Shepherd's Purse
Fan Weed	Spurge
Knotweed	Thistle
Kochia	Wild Carrot
Mallows	Wild Lettuce
Morning Glory	Yarrow
Mustard . . . and many, many other	

hard-to-kill weeds.

with **Daconil 2787™** fungicide you  
can effectively control these turf  
disease organisms:

Sclerotinia dollar spot  
Rhizoctonia brown patch  
Piricularia gray leaf spot  
Curvularia and Helminthosporium leaf  
spot

Blights—  
Going out  
Fading out  
Melting out

All-out control of weeds and disease,  
all season long, from one source—  
Diamond Alkali Company, Agricultural  
Chemicals Division, 300 Union  
Commerce Building, Cleveland, Ohio  
44115



## Diamond Chemicals

For more information circle number 217 on card

## GRAFFIS SWING

*continued from page 8*

\$1.25 an hour and the caddies got about the same, including the tip . . . Waddya mean "the good old days?"

**Jim Dempsey** is pro-superintendent at the new par-3 nine of Boar's Head Inn at Charlottesville, Va. . . The course was designed by **Ray Loving**, golf director of Farmington (Va.) CC . . . Dempsey formerly was pro at the U.S. Navy course, Guantanamo Bay, Cuba . . .

**Paul Bell** is another of the veteran pros who resigned a job he'd had for years (at Beach Club, Naples, Fla.) and after a year's vacation returned to work at a resort course for the summer season (Lake Morey Inn Hotel & GC, Fairlee, Vt.) . . . Small clubs, resort courses especially, are getting marvelous instruction and service bargains in employment of highly competent veteran pros who wanted to lighten their work load at big membership clubs . . . **Henry Picard**, **Roland Wingate** and **Billy Burke** are three other older stars.

Annual meeting of the Golf Writers Association is held the Wednesday prior to the Masters, in the Tournament Committee building . . . The place and time are indicative of the writers' feeling of co-sponsorship of the tournament . . . **Dudley (Waxo) Green**, Nashville Banner, was elected president, succeeding **Dana Mozley**, New York Daily News

**Charles Bartlett**, Chicago Tribune was re-elected secretary, an office he has held since the founding of the organization 18 years ago . . . **John Bibb**, Tennesseean, Nashville, was elected treasurer . . . As the association now has more than 500 members there's too much detail in the combined job for a working newspaperman so the load was split.

**Max Elbin**, PGA president, was presented the William Richardson memorial award by **Lincoln Werden**, New York Times, the Writers' board chairman . . . The Richardson trophy goes to a man who, in the golf writer's judgment, has done an outstanding job for golf

*continued on page 104*

GOLFDOM



Daconil 2787 being applied on greens at Kirtland Country Club, Kirtland, Ohio

# say goodbye

to weeds  
and disease  
in turf.



## Diamond Chemicals

With turf, you could say "it isn't the initial growth, it's the upkeep." That's where Diamond comes in, with products to give you all-out, season-long control of weeds and disease organisms.

Beautiful, healthy turf starts with these three:

**Dacthal®**—best crabgrass preventer you can buy. Also prevents many other weeds and undesirable grasses. Apply early for excellent pre-emergent control. Use in ornamentals, too!

**Dacamine®**—gets to the root of really tough established broadleaf weeds. Kills all the way to the roots, to get weeds once and for all. But it's gentle to turf when applied as directed.

**Daconil 2787<sup>(TM)</sup>**—the ONE broad spectrum fungicide to control many turf disease organisms. Excellent turf tolerance, long-lasting, eliminates the need for many different "specialized" fungicides.

With Diamond, you can make war on weeds and disease . . . and win. Write for FREE booklet on all-out weed and disease control to Diamond Alkali Company, Agricultural Chemicals Division, 300 Union Commerce Building, Cleveland, Ohio 44115.





**Grow it...**  
with TORO Sprinklers

**...add your own loving care**

Call it what you will... it's a cinch that TORO can help you get the best turf grass at the lowest cost. You start with TORO Turf-Care Specialists who'll show you how

1 How TORO automatic sprinkling equipment will save you money, both in terms of initial instal-

A TORO Exclusive: the Valve-in-Head Sprinkler. Sprinkler and valve in one economical unit! Gives you individually-controlled sprinklers at a real savings. Also makes conversion of non-automatic sprinkling equipment to a TORO system easy and economical.





TORO makes a complete line of power mowers. A right machine for every job... both heavy duty reels and rotary units.

**Mow it...**  
with TORO Mowers

**and you've got TORO TURF!**

lation economy and long term operating benefits (ask about the TORO Sprinkler Layout Design Service)

2 How the complete line of hard-working TORO mowers will get your mowing done faster than any other turf equipment (ask about the TORO Mower Survey and Proposal Service)

Get the facts from the folks at TORO facts about how their 53 years of turf experience can help you grow and mow your turf more effectively Put this coupon in the mail today



- ☐ Please arrange a free demonstration of Toro automatic sprinkling equipment and power mowers on my turf.
- ☐ Please send the fact-book 'This is TORO TURF.'
- ☐ Tell me more about the Toro Planning Services.

NAME \_\_\_\_\_

ADDRESS \_\_\_\_\_

CITY \_\_\_\_\_

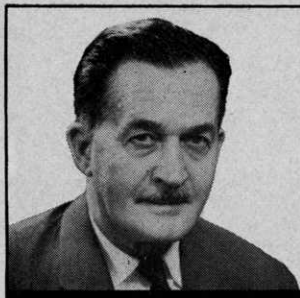
STATE \_\_\_\_\_ ZIP \_\_\_\_\_

**TORO**

G-37

8111 Lyndale Avenue South, Minneapolis, Minn. 55420

For more information circle number 129 on card



# GRAU'S Answers to Turf Questions

By FRED V. GRAU

Spring holds special significance for golf superintendents in the northern parts of the country. It is a time of reawakening for grass, trees, flowers and—most important—golfers. There are those who rushed the season and found the going rather “squishy.”

Superintendents diligently will inspect and assess winter damages such as weather's ravages, rodent activity, early play on dormant turf that was too soft, vandalism, winter sports, disease and so on. Rarely do these things occur in a pattern that admits of a standard organized approach. Each season demands a fresh individual study of causes, effects and remedies.

**Freezing and Thawing** — Alternate freezing and thawing is normal for spring in the North but few appreciate fully just what it does to soils and turf. Dense compact soils are loosened and aerated. Shallow-rooted plants are heaved out of the ground where they dessicate unless they are firmed into place by rolling.

Turf freezes at the surface during cold nights. When frozen solid enough to support golfers and their equipment, it is perfectly all right for play to proceed with minimum damage expected. But, when the sun waxes warm and the surface thaws, the soil assumes a loosened, wet (mushy) condition.

Play at this time can be ruinous. Traffic pressures will cement soil particles together, roots will be torn, footprints and wheelmarks will affect late play and the superintendent will be hard pressed to repair the damage.

## In Memoriam

Marshall E. Farnham, 70, for 38 years superintendent at Philadelphia CC, died March 31 1967. The turfgrass profession has lost an articulate voice which has helped guide the destiny of this industry in many ways.

He held charter memberships in the GCSAA and the Philadelphia sections the Penn. Turf Research Advisory Committee, the Turfgrass Section of the American Society of Agronomy, the Delaware Valley Turfgrass Association and the Penn. Turfgrass Council. He also served as president of the national and Philadelphia GCSA'S. He served on the USGA Green Section Committee.

Marshall was one who, with remarkable accuracy and foresight, brought into being the Turfgrass program at Penn. State. Soon he also stimulated action which developed into a strong turfgrass extension program in Pennsylvania, the first in the world.

Marshall leaves his gracious wife, Jane, two sons and five grandchildren—and uncountable friends and associates, all of whom held him in the high esteem he so well deserved.

(Note: A Resolution of Tribute and Regret was entered in the minutes of the Pennsylvania Turfgrass Council Proceedings at its annual meeting as Mr. Farnham was laid to rest.)

**Topdressing** — No other practice on the golf course has gained such universal acceptance for repairing breaks in turf. Low places are filled and turf is smoothed for the golfer's pleasure. Decomposition

*continued on page 20*

GOLFDOM



**Owners Of CLUB CAR Fleets Endorse The Analogy That CLUB CAR Is To The Golf Car Business What Automatic Pin Setting Equipment Was To Bowling Alleys. CLUB CAR Is Cutting The Operating Expense On Any Fleet Of Golf Cars In Half And At The Same Time Doubling Gross Rental Incomes.**



Pioneering in fiberglass bodies and development of the only aluminum frame used in golf car manufacturing enables us to market a 2-passenger golf car that weighs only 350 lbs. plus 360 lbs. of batteries for an operating weight of 710 lbs. This is 200 to 500 lbs. lighter than other golf cars and results in far less wear and tear on fairways, turf and golf car batteries.

Our patented drive unit (transmission) eliminates power-wasting solenoids, open chains, belts and delivers 96% of the battery power directly to the rear wheels.

This combination of a lighter weight golf car and the elimination of wasted battery power results in CLUB CAR drawing as little as 28 Amps of electric current from the batteries instead of the 60 to 90 Amps heavier golf cars draw.

CLUB CAR will operate 108 golfing holes (6 rounds) between battery charges. A golf car battery should never be drained below 50% reserve. CLUB CAR can go 54 golfing holes (3 rounds) and still retain the 50% reserve required if you are to obtain 800

or more charges on the batteries. Other golf cars can go only 18 holes (1 round) and still retain a 50% battery reserve. If driven 36 holes (2 rounds) the batteries are deep-cycled to such a point that the batteries will only take from 200 to 266 charges before they must be replaced.

The CLUB CAR patented drive unit, motor and light aluminum frame is guaranteed for two years and the savings effected in batteries, battery chargers, parts and electrical cost of charging batteries can result in a 50% reduction in a fleet's operating costs.

CLUB CAR will give you a "sunrise to sunset" operation and still be raring to go on a lighted par-3 course. This elimination of "down-time" for repairs or battery charging can double gross rental incomes. **WE GUARANTEE CLUB CAR TO OUT-PERFORM ANY GOLF CAR ON ANY GOLF COURSE ANYWHERE AT ANY TIME. MAKE US PROVE IT.** Don't buy any golf car until you have enjoyed a demonstration ride in CLUB CAR, the longest, widest, most stylish and yet lightest golf car on the market.

CLUB CAR DIVISION — Stevens Appliance Truck Co.  
Box 897, Augusta, Georgia

- ☐ Send technical bulletins: "Care and Feeding of Golf Car Batteries" — "How to Evaluate Golf Cars" — "Facts to Know Prior to Purchase" and Brochure.
- ☐ We'd like a CLUB CAR demonstration.

NAME \_\_\_\_\_

CLUB \_\_\_\_\_

ADDRESS \_\_\_\_\_

CITY AND STATE \_\_\_\_\_

# Club Car

**LIMITED NUMBER  
DISTRIBUTORSHIPS  
AVAILABLE.**

**WRITE  
FOR DETAILS**

For more information circle number 120 on card



FLINTITE



## The mark of quality in irrigation pipe.

FLINTITE asbestos-cement pipe is engineered for the job of transmitting water from source to fairways.

Easy to install, low in initial cost and maintenance, it is the pipe you can depend on for trouble-free performance over the years.

Combine this quality product with **Orangeburg® SP®** polyethylene pipe for tee and green lines, and **Orangeburg Fibre** pipe for drainage . and you have a complete irrigation package that can't be beat.

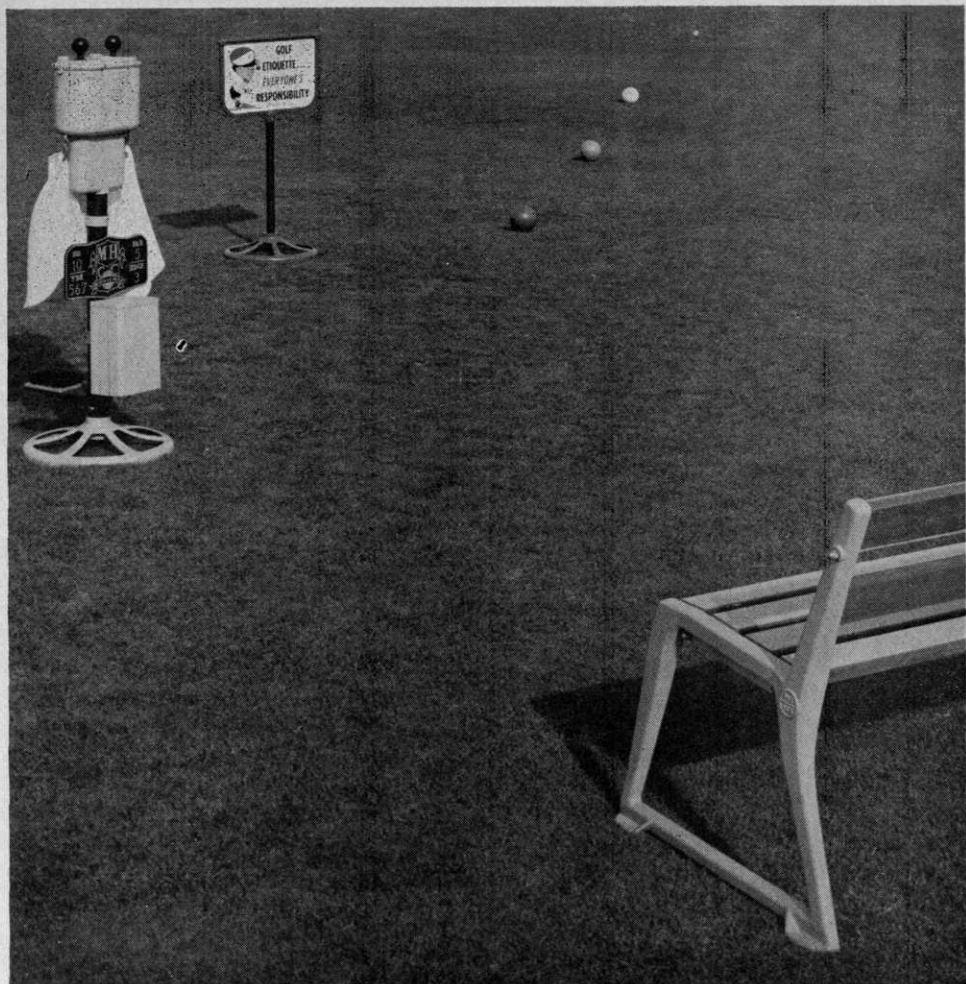


**FLINTITE®**  
ASBESTOS-CEMENT PIPE

The Flintkote Company, Pipe Products Group,  
30 Rockefeller Plaza, New York, N.Y. 10020

For more information circle number 139 on card





*Wherever golf is played . . .*

Par Aide Tee Equipment has proven to be practical and also adds beauty to the tee.

The portable tee accessory can be easily moved for mowing and tee changes.



FOR COMPLETE LINE OF PAR AIDE GREENS  
AND TEES EQUIPMENT—WRITE FOR CATALOG

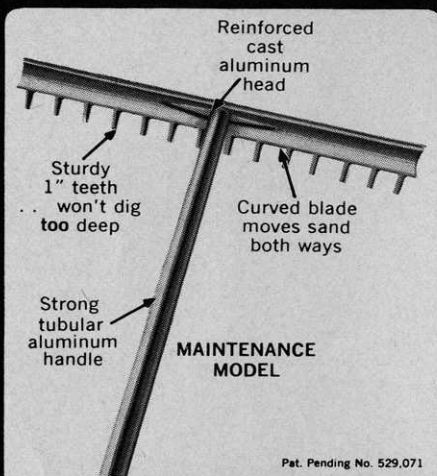
**PAR AIDE PRODUCTS COMPANY**

296 NORTH PASCAL STREET • ST. PAUL, MINNESOTA 55104

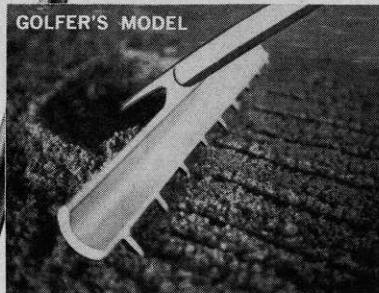
For more information circle number 162 on card

# NEW...a sand trap tool that really levels! **LEVELER**

**RIDES SMOOTHLY OVER SURFACE  
MOVES SAND BOTH WAYS  
WON'T LEAVE HOLES OR RIDGES**



**GOLFER'S MODEL**



Not just another rake! Designed especially for sand traps. Unique head shape permits pushing or pulling with equal ease. Leaves trap smoother than any other type of rake.

## **TWO SIZES:**

**MAINTAINER**—For the crew Head is 21" wide; handle 72" long. Weight 2¼ lbs. Price \$7.25.

**LEVELER**—For the golfer Head is 15" wide; handle 54" long. Stands on end. Weight 1¼ lbs. Price \$4.25.

Order from your distributor or write:  
**F.A.R. COMPANY • Portage, Wis. 53901**

For more information circle number 116 on card

## **GRAU'S ANSWERS**

*continued from page 16*

of thatch is promoted. Grass seed mixed with the compost germinates quickly and changes brown to green, especially if the seed has been pregerminated. Fertilizers, especially the quick hot kinds, act more gently when mixed with topdressing. Just a thought — is *your* topdressing absolutely weed free?

**Reseeding** — Frost-cracked soil provides favorable lodging places for seeds long before tillage tools can be operated.

Hydraulic seeding is effective and permits simultaneous fertilization. Equipment can be left on service roads, reaching seeding areas with hose or nozzle pressure. Found on only a few courses, hydraulic seeders deserve consideration not only for seeding but also for fertilizing, liming (especially hydrated lime for summer), insecticides and fungicides.

Fine seeds such as bentgrass may be sown through regular power sprayers with all screens removed, using an adjustable garden nozzle for distribution.

**Thatch Removal** — Grass must be growing well when this operation is performed so that new shoots quickly can fill voids left by thatch removal. Incidentally, new shoots are highly resistant to most diseases.

For depth and severity of machine operation there is no standard gauge. This is up to the judgement of the superintendent, guided by the manufacturer's recommendations, the type of turf involved and by past experience.

**Cultivation** — Grass must be growing actively so that holes can fill and scars can heal. While holes are open it is time to topdress with a mixture designed to improve the physical condition of the soil.

It is a time to introduce slow-release long-lasting nitrogen materials so that they reach the root zone and are in intimate contact with soil bacteria which are essential for releasing the nutrients.

Turf that has been thinned by winter

*continued on page 100*