

From England Comes the Answer to Perfect Putting Green Mowing!

Ransomes CERTES and AUTO-CERTES

(Powered)

Experience gathered over 134 years of lawn mower design and manufacture has culminated in these precision-built mowing instruments constructed by old-world craftsmen.

- 100 cuts per yard give "satin" finish to green.
- Mowing height precisely adjusted .008" at a time—down to $\frac{1}{8}$ of an inch. No tools required.
- Width of Certes is narrow enough to avoid scalping on undulating surfaces.
- Light weight—easy to handle—a child can operate the CERTES.

Ideal for Golf Course and Home Putting Greens

For specific information on the CERTES and other professional and special purpose RANSOMES mowers, write or call:

Warren's TURF NURSERIES

Exclusive importers for the
United States
8400 W. 111th Street
Palos Park (a Chicago suburb),
Illinois
(Code 312) 448-7200

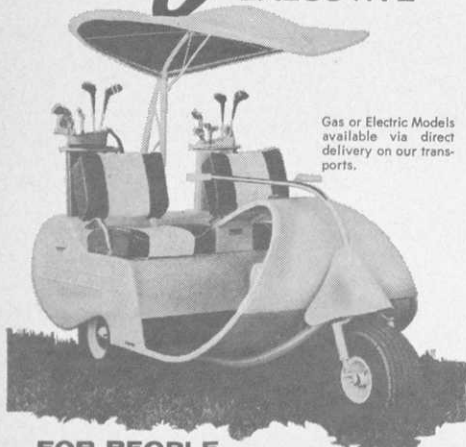


**RANSOMES SIMS
& JEFFERIES LTD
IPSWICH ENGLAND**

Distributorships now being established in key areas. Adequate supplies of spare parts, as well as mowers, now in stock at Warren's Chicago, New York and San Francisco area nurseries.

WALKER

Jato EXECUTIVE

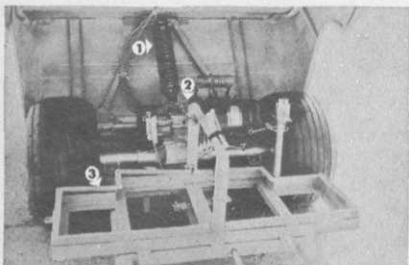


Gas or Electric Models available via direct delivery on our transports.

FOR PEOPLE WHO HAVE TO BE SOLD—

Its smoother ride you'll discover immediately—its more economical operation will be apparent in a few hours—its rugged durability you'll begin to appreciate in seasons to come. Whatever you most desire in a golf car or run-about you'll find it in the Walker Jato Executive for '66.

Get a demonstration now and see why there's no better buy for the individual, nor investment or lease program for the club than this handsome, all-steel value leader.



(1) Genuine Monroe shock absorber floats you across the course.

(2) Direct Drive simplicity eliminates troublesome belts, chains and noise!

(3) You can lift entire battery pack out for exchange. Time saver for the club or fleet owner.

Some choice Dealerships available. Ask about Your Exceptional Opportunity NOW!

FINANCING... LEASING PURCHASE AGREEMENTS

Jato Manufacturing, Inc.

Clay Center, Kansas 67432

Send literature describing the Jato Golf Car for 1967. Please check on of the following:

☐ Individual Use ☐ Club Pro ☐ Dealership

NAME _____

ADDRESS _____

CITY _____

STATE _____

For more information circle number 208 on card

USGA GREEN

continued from page 100

"Beware the guesswork that will produce grass that will behave for 3, 4 or 5 years but then disappears, along with the builder's guarantee. The one-third formula, (soil, sod and peat moss) is not always certain. And, above all, be careful of drainage. Watch the tile that is packed with soil that holds water, preventing the water from ever reaching the tile."

USGA Green Section Award

Following the luncheon break, the United States Golf Association Green Section Award, presented for distinguished service to golf through work with turfgrass, was awarded to Elmer J. Michael, of Pittsford, N. Y. Mr. Michael served as Golf Course Superintendent at the Oak Hill Country Club, Rochester, N. Y., from 1929 until his retirement in 1965. The award was presented by William Ward Foshay, of New York, USGA President, and Henry H. Russell, of Miami, Chairman of the Green Section Committee.

Mr. Michael was among the earliest superintendents to recognize the value of creeping bentgrass for putting greens. He planted the East Course at Oak Hill to a strain of bentgrass that he discovered on grass plots that were abandoned after the Pan-American Exposition, which had become the site of the Park Club of Buffalo, N. Y. At that time, 1918, he was an assistant to his father at the Park Club.

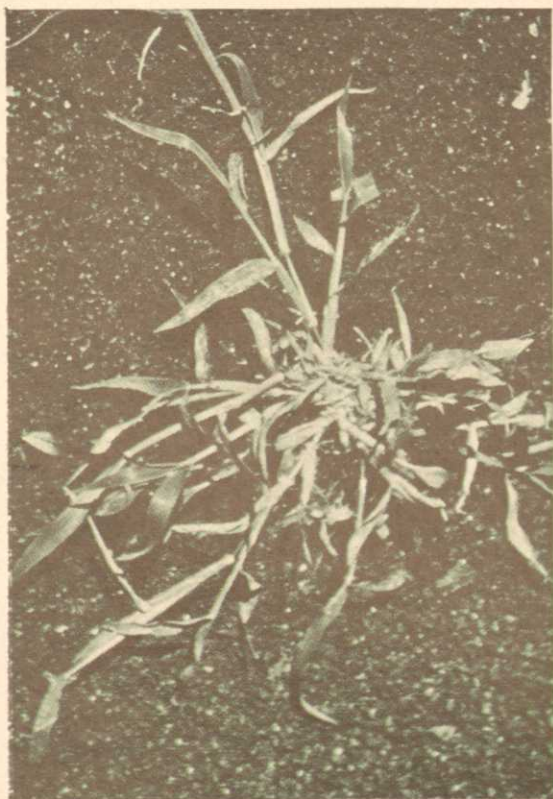
He also designed and installed an irrigation system for both the East and West courses at Oak Hill. Mr. Michael served as Mayor of Pittsford from 1956 to 1960 with no interruption to his duties at Oak Hill. He is a past President of the Pittsford Rotary Club and an Elder in the Pittsford Presbyterian Church.

Mr. Michael is the seventh recipient of the Green Section Award. Previous winners were Dr. John Monteith, Jr., of Colorado Springs, Colo.; Professor Lawrence S. Dickinson, of Amherst, Mass.; O. J. Noer, Milwaukee, Wis.; Joseph Valentine, Ardmore, Pa.; Dr. Glenn W.

continued on page 104



CHEMICAL BULLETIN



HOW TO CONTROL CRABGRASS:

BANDANE®—no waiting period before re-seeding! Bandane kills crabgrass as the seeds germinate. One application protects all season. And here's the beauty of it—you can re-seed right after applying Bandane without the usual waiting period. Doesn't interfere with root development of established grass, either. And it kills grubs and other turf insects. Get easy-to-apply Bandane granules from your supplier.

CRABGRASS AND INSECT CONTROL:

VELSICOL® CHLORDANE 25G

—when insects and crabgrass are a problem in established turf, apply Chlordane 25G. One application made before crabgrass seed germinates will provide excellent crabgrass control plus soil insect control that lasts for 5 years and more. Eliminates grubs, Japanese beetle larvae, wireworms, sod webworms and many others.

Save turf—save time with the Velsicol *complete line* of quality turf chemicals: Velsicol® "2-1," Memmi .8EC, Thiban™ 75, Thiban™-PMA, and PMA-10 for turf disease control; Bandane® for crabgrass control; Banvel® D 4S and Banvel® D + 2,4-D for weed control; Chlordane for insect and crabgrass control; and Pestmaster® Soil Fumigant-1 for greens renovation. Ask your supplier for them.

*A complete line of quality
turf chemicals from the
Growing World of*

VELSICOL



VELSICOL CHEMICAL CORPORATION

341 EAST OHIO ST., CHICAGO, ILL. 60611

Please send me your Turf Chemicals catalog.

NAME _____

ORGANIZATION _____

ADDRESS _____

CITY _____ STATE _____ ZIP _____

G37

For more information circle number 222 on card



Ready to go another round

Gas or electric, Harley-Davidson's new golf cars give you that extra that you always expect from a pro. Gas mileage is extraordinary, and the electric goes twice as far before it needs a charge. And, from this year on, batteries will last you twice as long, and cost 40% less to keep charged. When

the infrequent need for service occurs, your Harley-Davidson dealer is factory-trained to keep up with the innovations. Ask him for a demonstration that proves "...a real pro always comes through." Harley-Davidson Motor Company, Milwaukee, Wisconsin.

Harley-Davidson



Go ahead. Stick one in the woods.

Next to the 19th hole, Parkersburg Metal Buildings are the best thing that's happened to golf. ■ Great for storing carts. Or mowers. Excellent for a rain shelter. Snack bar. Pro shop. Or rest rooms. ■ A Parkersburg Building is economical per square foot...easy on the club treasury. Expandable, too. Add a room with minimum fuss. If you change the course, you can relocate your building. Since it's already painted, there's no maintenance. ■ On second thought, the 19th hole has nothing on a Parkersburg Building. It's just the place for it. Why not mail this coupon for complete details?

WALKER/PARKERSBURG
PARKERSBURG, W. VA. 26101
DEPT. 93

Please send facts about Parkersburg buildings

NAME

COMPANY

TITLE

ADDRESS

CITY

STATE ZIP

Parkersburg
METAL BUILDINGS
WALKER/PARKERSBURG
A DIVISION OF **textron**

For more information circle number 119 on card

say goodbye

to these weed and disease pests in your turf—

with **Dacthal®** herbicide you get
pre-emerge control of these weeds
and grasses:

Annual bluegrass	Foxtail
Barnyard grass	Goosegrass
Browntop panicum	Lovegrass
Carpetweed	Purslane
Chickweed	Spurge
Crabgrass	Stinkgrass
Fall panicum	Texas millet
Florida pussley	Witchgrass

with **Dacamine®** you can kill these
weeds once and for all:

Bindweed	Nettle
Bitterweed	Pennycress
Broomweed	Pennywort
Carpetweed	Peppergrass
Chickweed	Plantain
Chicory	Poor Jo
Croton	Puncture Vine
Dandelion	Ragweed
Dock	Shepherd's Purse
Fan Weed	Spurge
Knotweed	Thistle
Kochia	Wild Carrot
Mallows	Wild Lettuce
Morning Glory	Yarrow

Mustard . . . and many, many other
hard-to-kill weeds.

with **Daconil 2787™** fungicide you
can effectively control these turf
disease organisms:

Sclerotinia dollar spot
Rhizoctonia brown patch
Piricularia gray leaf spot
Curvularia and Helminthosporium leaf
spot

Blights—
Going out
Fading out
Melting out

All-out control of weeds and disease,
all season long, from one source—
Diamond Alkali Company, Agricultural
Chemicals Division, 300 Union
Commerce Building, Cleveland, Ohio
44115



Diamond Chemicals.

For more information circle number 189 on card

USGA GREEN continued from page 104

tees and it will disappear and crabgrass moves in. Also, the golfers want to start to play earlier and continue longer. The superintendent has trouble keeping the course in condition. Because *Poa annua* colors early and looks good, he might be inclined to go with it and risk the months of intense heat. For this reason *Poa annua* is a powder keg.

"We have now become a nation of *Poa* Pamperers. But *Poa* can't be considered a sound grass because of its reaction to heat. We must develop a strain that is always like *Poa annua* is for ten months of the year."

Other fairway renovation ideas were presented by a panel consisting of Richard Silvar, Superintendent, Knickerbocker Country Club, Tenaflly, N. J.; Sherwood Moore, Superintendent, Winged Foot Country Club, Mamaroneck, N. Y., and Albert Neuberger, Agronomist, USGA Green Section.

Silvar described his scorching and replanting eleven fairways at Knickerbocker, successfully, despite a ban imposed on the use of water before the program was completed. His plan was one recommended by the USGA, using sodium arsenite, 5 gallons per acre initially, then 3 gallons per acre in the second application a week later, with water applied every second day to germinate any seed in the soil. The second application of sodium arsenite would kill any new growth. Then he followed this preparation with a complete job of thatching and finally he fertilized and seeded.

When the water ban was imposed, he solved the problem by using heavy polyurethane sheets to cover the tees. The 28 x 100 sheets retained the moisture and the results were excellent.

Albert Neuberger discussed the subject of seeding and the mixture ratios when using Bluegrass, Bent or Rye. He emphasized the importance of working the soil to increase the percentage of survival and to be thorough when thatch-

continued from page 108

GOLFDOM

Owners Of CLUB CAR Fleets Endorse The Analogy That CLUB CAR Is To The Golf Car Business What Automatic Pin Setting Equipment Was To Bowling Alleys. CLUB CAR Is Cutting The Operating Expense On Any Fleet Of Golf Cars In Half And At The Same Time Doubling Gross Rental Incomes.



Pioneering in fiberglass bodies and development of the only aluminum frame used in golf car manufacturing enables us to market a 2-passenger golf car that weighs only 350 lbs. plus 360 lbs. of batteries for an operating weight of 710 lbs. This is 200 to 500 lbs. lighter than other golf cars and results in far less wear and tear on fairways, turf and golf car batteries.

Our patented drive unit (transmission) eliminates power-wasting solenoids, open chains, belts and delivers 96% of the battery power directly to the rear wheels.

This combination of a lighter weight golf car and the elimination of wasted battery power results in CLUB CAR drawing as little as 28 Amps of electric current from the batteries instead of the 60 to 90 Amps heavier golf cars draw.

CLUB CAR will operate 108 golfing holes (6 rounds) between battery charges. A golf car battery should never be drained below 50% reserve. CLUB CAR can go 54 golfing holes (3 rounds) and still retain the 50% reserve required if you are to obtain 800

or more charges on the batteries. Other golf cars can go only 18 holes (1 round) and still retain a 50% battery reserve. If driven 36 holes (2 rounds) the batteries are deep-cycled to such a point that the batteries will only take from 200 to 266 charges before they must be replaced.

The CLUB CAR patented drive unit, motor and light aluminum frame is guaranteed for two years and the savings effected in batteries, battery chargers, parts and electrical cost of charging batteries can result in a 50% reduction in a fleet's operating costs.

CLUB CAR will give you a "sunrise to sunset" operation and still be raring to go on a lighted par-3 course. This elimination of "down-time" for repairs or battery charging can double gross rental incomes. WE GUARANTEE CLUB CAR TO OUT-PERFORM ANY GOLF CAR ON ANY GOLF COURSE ANYWHERE AT ANY TIME. MAKE US PROVE IT. Don't buy any golf car until you have enjoyed a demonstration ride in CLUB CAR, the longest, widest, most stylish and yet lightest golf car on the market.

CLUB CAR DIVISION — Stevens Appliance Truck Co.
Box 897, Augusta, Georgia

- ☐ Send technical bulletins: "Care and Feeding of Golf Car Batteries" — "How to Evaluate Golf Cars" — "Facts to Know Prior to Purchase" and Brochure.
- ☐ We'd like a CLUB CAR demonstration.

NAME _____

CLUB _____

ADDRESS _____

CITY AND STATE _____

Club Car

LIMITED NUMBER
DISTRIBUTORSHIPS
AVAILABLE.

WRITE
FOR DETAILS

For more information circle number 157 on card

USGA GREEN

continued from page 106

ing. "It looks horrible but it will pay off."

Neuberger also related the tendency toward earlier planting, such as Bent in mid-August, Bluegrass by mid-September, so that Poa won't have a chance to flourish. And he cautioned to use quality seed. "This is not the area to try to save money. Buy certified seed from reputable dealers, even if you have to use it judiciously. There's no substitute for top seed."

Sherwood Moore posed the question, "What happens afterward?" and suggested that attention be directed toward how the fairways and greens are mowed, does the worker follow the same path every time, thus creating a problem? Over fertilization can be harmful. Too much nitrogen on established turf would be an abuse, as would too much lime when followed by a hot spell. Drainage can lead to problems and the superintendent must keep on the look out for any tell tale signs. At Winged Foot the maxi-

mum size drain pipes are now 21" in diameter. Insect control and the selection of correct sprays have to be considered, and Moore had this sensible suggestion: If the spray you use burns the fairway, chances are that the grass will come back. If so, just disappear for a day or two until the color returns!

Miss Carol McCue, Executive Secretary, Chicago District Golf Association, opened the talks on the renovation of tees, bunkers and paths and struck a blow for the women. "I don't like to call 'forward tees' ladies' tees, because many a man would prefer to hit from a spot closer to the green. I think they should be designated by color, with each of them rated for both the men and the women. That way either can play from *any* of the tees and be able to submit the scores for handicap purposes."

In selecting the site for ladies' tees, Miss McCue said that it should not be so located as to change the character of

continued on page 110

it's new from West Point

for greens and tees

the

VG-20

Verti-Groove

with

Catcher



Renovate deep thatch and clean in one operation with the new West Point VG-20 Verti-Groove.

"Write for complete information about all
West Point tools for one-man turf maintenance."

WEST POINT PRODUCTS CORP.

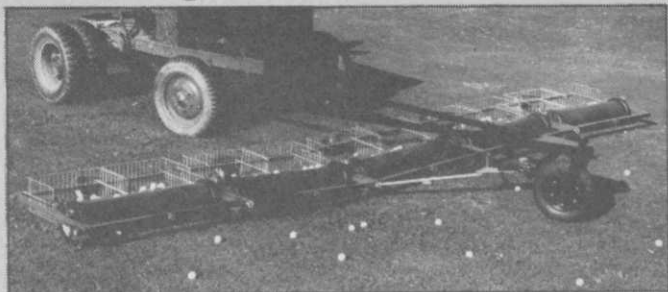
West Point, Pa.

For more information circle number 263 on card

RANGE

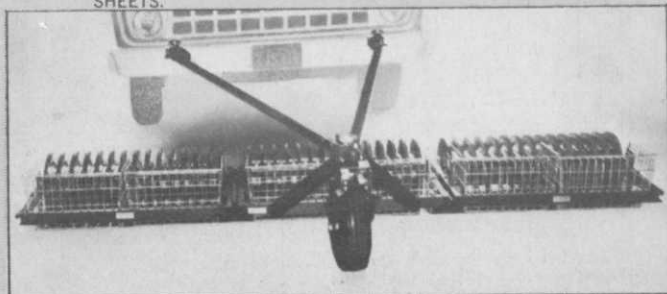
BALL RETRIEVERS

***Fastest, Most Efficient Method
of Collecting Golf Balls on Driving Ranges***



BAILEY GOLF BALL PICKERS

In 2 models: Roller for grassy turf, Wheel for uneven terrain.
3 unit Senior Picker covers 11'. 2 unit Junior Picker covers 7'4". More units can be added as needed. SEND FOR FACT SHEETS.



FONKEN BALLTRIEVERS

These range ball retrievers are available in four sizes: 3 ft., 6 ft., 9 ft., 15 ft. They are engineered for ball retrieving from both turf and ground ranges.

FREE GOLF SUPPLIES CATALOG

Complete line of golf equipment for
Golf Courses, Driving Ranges, Par-3
Courses, Miniature Courses.

WRITE FOR MORE INFORMATION

EASTERN GOLF CO.

2537 BOSTON ROAD • BRONX, N. Y. 10467
• Our 38th Year of Service to
the Golf Industry •

EASTERN GOLF CO.

DEPT. GP

Please send catalog of golf supplies
for:

☐ Golf Courses ☐ Driving Ranges
☐ Par-3 Courses ☐ Miniature Courses

Name _____

Club _____

City _____

State _____ Zip # _____

Best uniform spreading at low maintenance cost! **EZEE FLOW**



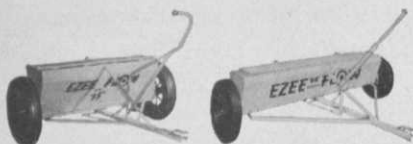
Model 111 Spinner Spreader — 2-ton capacity. Spreads granular, semi-granular or pelleted materials *accurately and uniformly* in patterns up to 56 feet wide: Handles all fertilizers, seed, dry chemicals, rock salt, sand, etc. Can be reduced to 6 to 8 foot wide patterns for special spreading. Patented metering device and PTO-driven auger delivers the exact amount of materials to the spinner to insure the most accurate *uniform* spread regardless of ground speed.

Easy operation — Spread rate table gives dial settings for width of spread and lbs. per acre. After the regulator dial is set for the desired spread, the operator merely opens and closes the shutter.

Low-cost maintenance — Rugged construction and fewer moving parts give you long, dependable service—virtually eliminate costly downtime!

Big wheels on a single axle makes maneuvering easy—gives excellent flotation and prevents ruts and “tearing.”

Special . . . for turfed areas



EZEE FLOW Olympia line

Two models (5' and 8' wide) with 3" port spacing and adjustable scatterboards for “no streak” turf feeding.

PRODUCTS OF **Avco CORPORATION**

For complete information, write to EZEE FLOW Division, Department 11, 3428 North Harlem Avenue, Chicago, Illinois 60634.

EZEE FLOW

For more information circle number 166 on card

USGA GREEN

continued from page 108

the hole, or the course, or to make it less interesting to play. “If it changes the strategy of play or if hazards suddenly come into play, or if the golfer’s safety is endangered, the ladies tee is misplaced.”

Lee Record, Agronomist, USGA Green Section, talked of sand versus grass for bunkers. “By its color contrast, sand gives the golfer a visual aid to his target, whereas grass is not as attractive to look at. Sand is costlier to maintain but grass is tougher to play out of.” One midwestern course, Record stated, spends \$5,000 annually to maintain its 80-odd sand traps.

Naturally, angular sand is preferred to rounded sand. “A ball will lose itself in rounded sand,” he said. “The depth of the sand near the green should be 4 to 6 inches. Good sand will bury a ball about one-half its depth or less. The sand should contribute to a golfer’s skill and pleasure, not minimize it. But in many cases, sand traps are being replaced by grass bunkers.”

A second member of the Baltusol team, to address the large group, Edward Casey, superintendent, spoke of the extensive bunker renovations taking place at the 1967 U. S. Open site. Of the 125 traps on the Lower Course, 105 have been renovated in 13 months. Another problem was installing irrigation lines that would cover the re-sodded area without reaching the sand. The trap on the 17th hole, “a brute”, was redesigned. It was graded, limed, fertilized, sodded and worked. The new sod held the water in place and water seeped down to dry soil without running off as it did before. Pop-up sprinkler heads in a specially designed double line, each independent of the other, wets down the area with no danger of watering the sand.

Now the big question: How to finance the renovation job. For this one, the USGA Green Section brought in Harry C. Eckhoff, Executive Director of the National Golf Foundation, and here are some of the sources of money.

continued on page 112