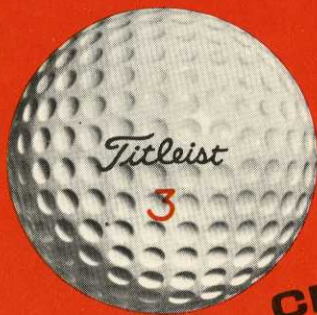


**WHY TITLEIST?**



**CLICK**

**FEEL  
LENGTH**

Titleist — unrivalled tour leader for nineteen straight years.

You'll get more out of golf with Titleist,  
no matter what kind of a game you play.

And remember — no one is paid to play Titleist.

**ACUSHNET GOLF BALLS**

Titleists are sold through golf course pro shops only.



**MASTERS** Champion  
Pensacola Open Champion



*Gay Brewer*

# BIG

-and often-

# WINNERS!

Winner  
Tournament of Champions  
Houston Champions International  
Indianapolis "500" Festival Open



*Frank Beard*




Oklahoma City Open Champion



*Miller Barber Jr.*

Masters Runner-Up  
1964 PGA Champion



*Bobby Nichols*




Members Hillerich & Bradsby Advisory Staff

The remarkable winning performances on the tour of these outstanding players testify to the championship quality of Power-Bilt golf clubs. They know they can hit every club in their Power-Bilt set equally well. A 2-iron swings just like an 8-iron, so they hit away with **CONFIDENCE!** Your members can, too, because every club in a Power-Bilt set is Master-Matched to swing exactly alike. Put *your* confidence in Power-Bilts, and you'll get winning results on the lesson tee!

HILLERICH & BRADSBY CO.  
P. O. Box 506  
Louisville, Kentucky 40201

Master-Matched  
**Power-Bilt**  
Golf Clubs

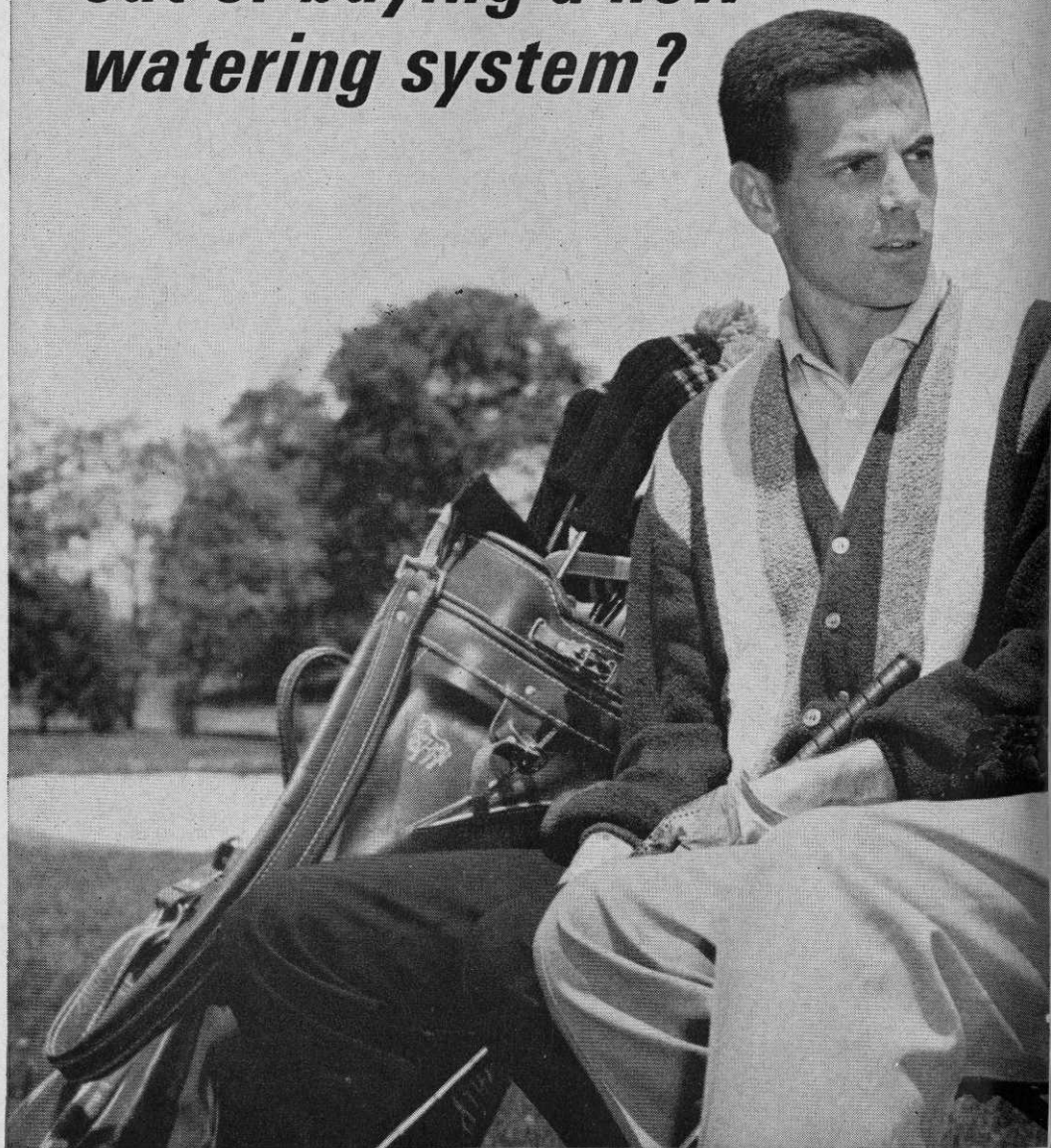


Engineered to  
Perform  
Better!

For more information circle number 135 on card

*Ask yourself this question about your club's  
second most important investment...*

***How can we take the risk  
out of buying a new  
watering system?***







## Choose Cast Iron Pipe ...and be sure!

Cast iron pipe is tough enough to go in without problems—stands up to sudden shocks, external loads and heavy surge pressures. Goes together quickly with leak-tight joints that permit immediate backfilling and quicker play.

Tough, dense cast iron pipe doesn't absorb water—doesn't freeze and crack in the winter. And it taps quickly and easily when you want to change the system.

Cast iron pipe gives you more years of trouble-free service, too. 100-year-old cast iron pipe is serving more than 60 water-utilities right now.

When you come right down to it, strong, sure cast iron pipe is your best all-round buy. Specify cast iron pipe—you can't go wrong.



CAST IRON PIPE RESEARCH ASSOCIATION

An association of quality producers dedicated to highest pipe standards

THE MARK OF PIPE THAT LASTS OVER 100 YEARS

## There's nothing like CAST IRON PIPE

Get help on your irrigation system plans with the industry's most complete booklet. Has vital design and installation tips and other planning aids. Mail coupon for free 20-page booklet.



Wallace T. Miller, Managing Director  
Cast Iron Pipe Research Association  
3440-G Prudential Plaza  
Chicago, Illinois 60601

Please send me a copy of your booklet,  
"Golf Course Irrigation."

Name \_\_\_\_\_  
Position \_\_\_\_\_  
Name of Course \_\_\_\_\_  
Address \_\_\_\_\_  
City \_\_\_\_\_ State \_\_\_\_\_ Zip Code \_\_\_\_\_

For more information circle number 109 on card

**TOP QUALITY  
GOLF SUPPLIES FOR  
GOLF COURSES  
DRIVING RANGES  
PAR-3 COURSES  
MINIATURE COURSES**

Balls, clubs, tees, mats, pails,  
grips, markers, retrievers, golf  
bags, obstacles, ball washers,  
ball pickers... and more!



**EASTERN GOLF CO.  
2537 BOSTON ROAD  
BRONX, N.Y. 10467**

**SEND FOR CATALOG**

**EASTERN GOLF CO. DEPT. G**

Please send catalog of golf supplies  
for:

☐ Golf Courses ☐ Driving Ranges  
☐ Par-3 Courses ☐ Miniature Courses

Name \_\_\_\_\_

Club \_\_\_\_\_

City \_\_\_\_\_

State \_\_\_\_\_ Zip # \_\_\_\_\_

For more information circle number 126 on card

**ARNOLD E. ABRAMSON**  
PUBLISHER

**ROBERT J. ABRAMSON** **JOE GRAFFIS, SR.**  
ASSOCIATE PUBLISHER ASSOCIATE PUBLISHER

**JOHN M. ROSS**  
EDITOR-IN-CHIEF

**HERB GRAFFIS** **DESMOND TOLHURST**  
EXECUTIVE EDITOR EDITORIAL DIRECTOR

**DAVID E. LA BOUNTY**  
MANAGING EDITOR

**PATTY KEATING** **VINCENT PASTENA**  
EDITORIAL ASSISTANT FASHION EDITOR

EDITORIAL CONSULTANTS

**HARRY OBITZ** **DICK FARLEY**  
MERCHANDISING

**DR. MARVIN FERGUSON**  
AGRONOMY

**ROBERT TRENT JONES**  
GOLF ARCHITECTURE

**FRANC ROGGERI** **MARIUS N. TRINQUE**  
EXECUTIVE ART DIRECTOR ART DIRECTOR

**PETER J. ABRAMSON**  
ASSISTANT GENERAL MANAGER

**DOROTHY M. SHEEHAN**  
ASSISTANT TO THE PUBLISHER

**RON GUZIK**  
CIRCULATION MANAGER,  
ADMINISTRATION AND PROMOTION

**DAVID SIMMONS**  
PRODUCTION DIRECTOR

**SOL NUSSBAUM** **MARLENE BERMAN**  
PRODUCTION MANAGER ADVERTISING SERVICE  
MANAGER

**JOHN SET**  
PRODUCTION ASSISTANT

**WESTERN OFFICE**  
**ARTHUR H. MORSE II**  
VICE PRESIDENT FOR WESTERN OPERATIONS

**DARRELL OLDHAM**  
Universal Publishing and Distributing Corp.  
680 Beach St.  
San Francisco, Cal. 94109  
(415) 885-0570

**PETER FALLON** **O. MORGAN OLIVER**  
ADVERTISING DIRECTOR ADVERTISING MANAGER

**EASTERN ADVERTISING OFFICE**  
**ARTHUR MAY** **STEVEN HELD**  
**HERBERT J. ADE**  
235 East Forty-Fifth St., New York, N.Y. 10017  
(212) 683-3000

**MID-WEST ADVERTISING OFFICE**  
**ROBERT R. GLENN, MANAGER**  
**JOE GRAFFIS, JR., JOE GODFREY**  
**TOURISSE GREENFIELD**  
400 West Madison Street, Chicago, Ill. 60606  
(312) 546-0906

**NORTHEASTERN ADVERTISING OFFICE**  
**EDWARD R. HUGHES, MANAGER**  
**ART HEERWAGEN**  
P. O. Box 1133  
Hanover, New Hampshire 03735  
(603) 643-3600

**DETROIT ADVERTISING OFFICE**  
**J. EDWARD VAN HORN, JR.**  
1617 Fisher Building  
Detroit, Mich. 48202  
(313) 874-2494

**ADVERTISING REPRESENTATIVES**  
**FLORIDA & CARIBBEAN**  
**METROPOLITAN PUBLISHERS**  
**REPRESENTATIVES, INC.**  
Suite 108, 924 Lincoln Road  
Miami Beach, Fla. 33139

**GEORGIA**  
**METROPOLITAN PUBLISHERS**  
**REPRESENTATIVES, INC.**  
1261 La Vista Rd. N. E., Atlanta, Ga.

# GOLFDOM

INCORPORATING GOLF BUSINESS

VOL. 41, NO. 8

AUGUST, 1967

## TABLE OF CONTENTS



### ARTICLES

- 14 PROFILE OF A MERCHANDISER ..... *By Don Curlee*  
18 ... AND PROS ALSO RATE PGA SHOW HIGH  
22 DESIGN AND USE OF IRRIGATION SYSTEMS ..... *By Marvin Ferguson*  
26 AFTER LABOR DAY—WHAT THEN? ..... *By Jean Ehly*  
31 MINOR ELEMENT DEFICIENCY SYMPTOMS IN TURFGRASS  
..... *By Roger A. Larson and James R. Love*  
36 IS YOUR GOLF CAR INSURANCE ADEQUATE? ..... *By John F. Gleason, Jr.*  
44 CASE OF THE CARELESS CADDIE ..... *By William Jabine*

### DEPARTMENTS

- 6 SWINGING AROUND GOLF ..... *By Herb Graffis*  
10 GRAU'S ANSWERS TO TURF QUESTIONS ..... *By Fred V. Grau*  
12 ACCENT ON MANAGEMENT ..... *By Ken Emerson*  
40 SIZING UP GOLFWEAR ..... *By Vincent Pastena*  
66 NEW PRODUCTS  
69 COMING EVENTS  
70 PEOPLE IN THE NEWS  
80 CLASSIFIED  
82 ADVERTISING INDEX  
83 BUYERS' SERVICE  
84 OFFICIALS' PAGE

*Cover: Golden Horseshoe GC, Williamsburg, Va.  
Photo by Leonard Kamsler*

GOLFDOM, Incorporating GOLF BUSINESS, August Issue, 1967. Published monthly January through October by Universal Publishing and Distributing Corp. at New York, N.Y. Executive Offices: 235 East Forty-fifth Street, New York, N.Y. 10017 Volume 41, No. 8, Arnold E. Abramson, President; Robert J. Abramson, Executive Vice President; Franc Roggeri, Senior Vice President; Morton Waters, Vice President; David Rowan, Senior Vice President; John M. Ross, Vice President; A. H. Morse II, Vice President; Peter J. Abramson, Vice President; George Bauer, Vice President; John Fry, Vice President; Dorothy M. Sheehan, Secretary; Edwin J. Harragan, Assistant Secretary; Shirley Collins, Assistant Treasurer. Copyright © 1967. Universal Publishing and Distributing Corporation. Published simultaneously in Canada. Copyright under International, Universal and Pan-American Copyright Conventions. All rights reserved, including right of reproduction, in whole or in part, in any form. Printed in the U.S.A. For advertising rates, apply to Advertising Manager. Please send change of address notice to GOLFDOM Magazine, Service Department, P.O. Box 513, Des Moines, Iowa, 50302. The Company also publishes: Golf, The Family Handyman, Ski, Ski Business, Ski Area Management, Vocational Guidance Manuals, Universal Home Plan Books, Nova Books and Award Books, Members of Business Publication Audits, Magazine Publishers Association, and National Golf Foundation. Subscription rates:   Domestic \$3.00, foreign, \$4.00 per year.

# Swinging around golf

By **HERB GRAFFIS**

News of the Golf World in brief



The IBM computing system in the Open was fine in telling the score, the box-score (putts, greens hit in regulation figures, drives in fairways and rough), and lengths of drives on some holes, but veteran golf writers said the computer didn't do a thing to build color for the competitors and excitement for the gallery . . . The mechanics didn't come close to providing the drama of the smart golf of Ed Furgol in winning the 1954 National Open by playing a shot from left of the 72nd fairway on the lower course onto the upper course then onto the green and beating Gene Littler by a stroke.

PGA Merchandise Show at the PGA courses, Palm Beach Gardens, Jan. 20-23, 1968, the Seniors Championship Jan. 25-28 . . . PGA Stroke Play Championship, Jan. 8-11 and Match Play qualifying Jan. 16, Matches, Jan. 18-22. . . Rocky Mountain PGA co-sponsor of Merchandise Show to be held at Las Vegas at the Riviera Hotel Nov. 5-8. Robert Case of Beverly Hills, Calif., is the promoter.

Opening of Los Angeles County's Department of Parks and Recreation Marshall Canyon 18 brings the county's 18-hole course total to 12 . . . The county has nine 9-hole courses . . . Marshall Canyon course, like many other of the county's courses, is financed by the Retirement Board of the County Employees' Retirement Association under a long-term lease-purchase agreement with LA County Board of Supervisors . . . Bob Clare is pro at Marshall Canyon, Jack Ryan is golf supervisor and Philip Jackson is course superintendent . . . LA County

Department of Parks and Recreation is world's largest operator of golf.

Thinking of many city, county, state and other political divisions that are getting into public golf or considering getting in, I'd urge the outfits to send park superintendents or whoever else will be in charge of public golf, to Los Angeles to study that operation . . . It will save public money, time and provide better golf . . . New York City Park Department is also well worth studying.

Congratulations to Toney Penna who sponsored a driving range and golf clinic for kids at Jupiter, Fla. . . . City commission by unanimous vote named a street Toney Penna Drive . . . Toney has helped more youngsters in golf than you'll ever realize . . . His brother, Charley, pro at Beverly CC, Chicago, venue of 1967 Western Open, also has been honored by the management of the world-famed Club Corsica, which has named its deluxe 11-course dinner with wines, the Charley Penna Snack . . . Bing Crosby who ate there after playing with Charley, the late and marvelous Scotty Fessenden and me, said two more meals at that place and he'd eat himself out of the pictures.

I get a lift out of Joe Ryan, secretary-treasurer-manager, CC of Columbus, Ga., telling about the club's seventh annual junior southeastern tournament, which is scheduled there July 31-Aug. 2 . . . Too many clubs are operating on the big idea of the old folks who have money or expense account exemptions and forget the kids and young parents . . . Good thing about high price of borrowing is that it's

*continued on page 76*





## The New Rondette \$295<sup>00</sup> Golf Shelter

Here is a permanent all redwood exterior high-quality, low cost, real rain protector, designed to blend in with the landscape. 250 sq. ft. of shelter for ten golfers and entrances for three carts, the Rondette Golf Shelter can be easily erected in four hours by casual labor. An outstanding value at \$295.00. Larger sizes also available.

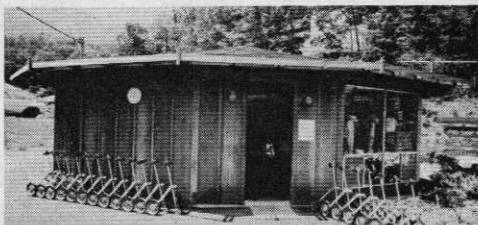


Offers a wide variety of Rondette designs. Shown below and at left is a Rondette 12 used as a Pro Shop. Other designs from larger shelters to complete vacation houses are also available.

Write for free color brochure:

# RONDESICS, INC.

Parkway Office Building  
Suite 304  
Asheville, North Carolina 28801



For more information circle number 169 on card





**When you could still  
knock the cover off the ball—**

**SKINNER** *was there!*

Back in the twenties, golf ball covers were not permanently bonded to the windings—and it was possible to actually knock the cover off the ball. There have been a lot of changes in golf balls since then—and in golf course irrigation, too. For example, the only thing about a Skinner irrigation system that hasn't changed in the past 40 years is its ability to distribute water efficiently, dependably and economically. The advantage of nearly 70 years of irrigation experience and "know-how" is yours with any Skinner system you buy today—automatic, semi-automatic or manual. For complete information, write The Skinner Irrigation Company, 415 Water Street, Troy, Ohio 45373.



**the oldest name in  
irrigation equipment**

For more information circle number 173 on card



## The hour- stretchers.

Two Ford LCG tractors stretch those precious extra minutes out of each working hour. Help you finish jobs faster. Reduce overtime, cut labor costs. ■ For example: Ford 10-speed power-shift transmission. Up-shift, down-shift *on-the-go* for hills, turns, tight maneuvers. Power take-off keeps right on running at constant rated speed; power-driven equipment stays at peak capacity. Quick-attach Ford rotary or flail mower as well as gang reels and other equipment to Ford's 3-point hitch. ■ Routine service intervals now are as much as 3 times longer than they used to be. Rugged Ford design keeps downtime at a minimum. ■ So look at the Ford LCGs. 2 power sizes. Smooth-running fuel-thrifty engines. Widest transmission and power take-off choice in the industry. Tires to match all turf conditions. See your Ford tractor and equipment dealer soon. ■ Ford Tractor Division, 2500 E. Maple Road, Birmingham, Michigan 48012.



For more information circle number 127 on card



# GRAU'S Answers to Turf Questions

By FRED V. GRAU

In the days before Kentucky 31 fescue came on the market, the late O. J. Noer used to call me "Alta fescue Grau" because, on the "Orpheum Circuit," I constantly encouraged superintendents to give this grass a trial.

At Beltsville in 1947, I engineered the seeding of the 17-acre front lawn to Alta fescue because, at that time, one couldn't find enough Kentucky 31 fescue.

Over the years, we have seen the tremendous upsurge of Kentucky 31 fescue seed production and the almost universal use of tall fescues for roadside turf. Alta largely has tended to remain in the West, while Kentucky 31 seems to be preferred in the eastern half of the country.

The subject of tall fescue at a superintendent's meeting elicits mixed reactions, some bordering on the profane. Some swear by it; others at it.

For turf, these attributes for tall fescues are rated "plus":

- (1) Deep-rooted.
- (2) Highly resistant to drought, heat, cold, insects, diseases, salt, acid, alkali, weeds, chemicals.
- (3) Good color.
- (4) Responds well to fertilizer.
- (5) Tolerant to sun or shade.
- (6) Wide adaptation to climate and soil.

On the "minus" side, these features often are cited:

- (1) Coarse and ugly.
- (2) Grows in clumps.
- (3) Won't stand close mowing.
- (4) Hard to mow.
- (5) Throws seed heads.

Those who have worked with tall fescues long enough to understand them and to appreciate their good qualities have learned to minimize the "minus" qualities by adhering to the following:

(1) Heavy rates of seeding, up to 10 lbs. to 1,000 sq. ft. This would cost about the same as 2-3 lbs. of Merion or 3-4 lbs. of Pennlawn.

(2) Heavy rates of slow-release nitrogen (plus P & K, of course) in seedbed to develop solid turf and shut out weeds.

(3) Adequate maintenance fertilization to keep turf vigorous, to reduce seed-head formation and to make mowing much easier.

Solid tall fescue turf can withstand closer mowing than isolated plants because the dense turf holds the mowers up.

Many golf course roughs are "rough" because of tall fescues which are versatile and can be clipped to suit player demands from the discriminating woman country clubber to the golf professional who respects a challenge on the way to a win.

Some golf course fairways, especially where water is a problem, are being seeded to Kentucky 31 fescue. A course in California (Morro Bay) has good fairway turf of Alta fescue. No other grass could tolerate the high saline content.

We can anticipate finer-bladed tall fescues in the future that can tolerate closer mowing. Many homeowners are turning to tall fescues for more trouble-free maintenance. Athletic fields over a wide area lean heavily on this grass. The trend is unmistakable. Many are working on improved selections •