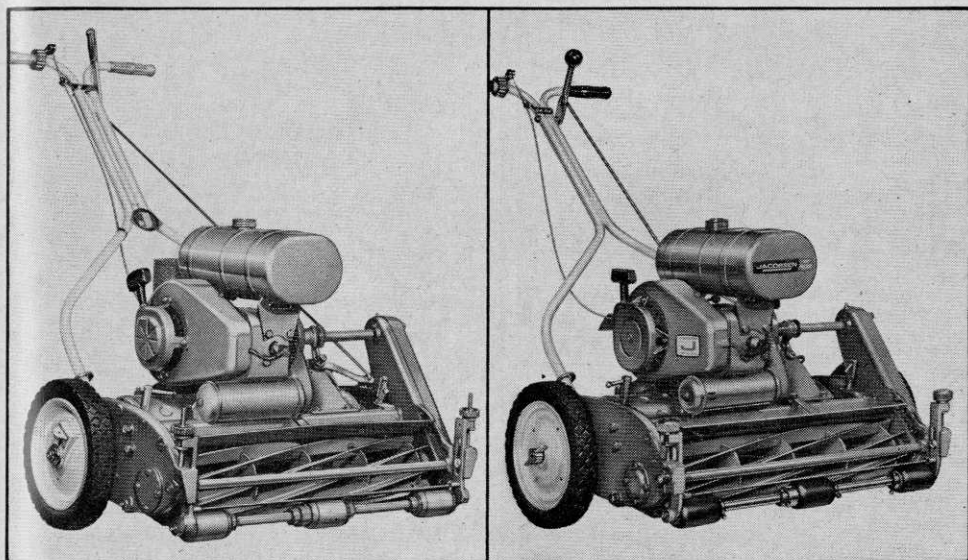


Which greens mower has solid state ignition and is 10 ways new?



New Jacobsen Greens Mower with Space Age SS (Solid State Ignition) completely eliminates cams and points. Fool proof integrated circuit provides a consistent, high intensity spark *indefinitely*. Heat and humidity never affect ignition. You get new dependability and longer engine life. SSI is warranted for 2 full years.

Here are 9 more new features which reduce maintenance and lessen downtime!

- Spring-Loaded Drop-Out Bed Knife
- Positive-Locked Transport Wheels
- Sealed Pawl Driven Transport Wheels
- Improved Traction Roller Drive
- Heavy-Duty Clutch Control
- Improved Easy-Starting Carburetion
- High Efficiency Air Cleaner
- Improved Cutting Height Control
- Rigid Triangular Frame Construction

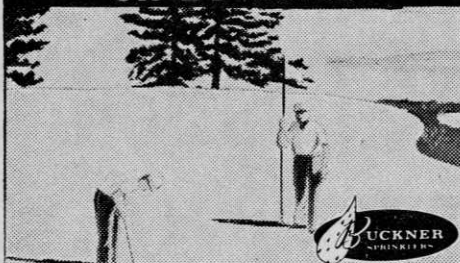
The greens mower on the left is the famous Jacobsen that's been used on more golf greens than any other greens mower in the world. On the right, our newest. It's 10 ways better. You can depend on it!

JACOBSEN 1st in service

Jacobsen Manufacturing Company, Racine, Wisconsin

For more information circle number 170 on card

Play will be normal on 17 holes



...while **KIRCHDORFER**
Installs your
Irrigation System
one fairway at a time!

Free Literature and list of installations on request.

Kirchdorfer
Irrigation, Inc

P. O. BOX 4124

LOUISVILLE, KY. 40204

PHONE 585-4305

AREA CODE 502

For more information circle number 208 on card

WANT TO BUILD A LUXURY TURF, ECONOMICALLY?

Use certified Blue Tag
HIGHLAND COLONIAL
BENTGRASS

Over **8,000,000** Seeds per Pound!

For more information or enough seed (a small bag) to
plant a 500 square foot test plot, write:



OREGON HIGHLAND BENTGRASS COMMISSION

2121 FRONT ST., N.E.
SALEM, OREGON 97303

For more information circle number 207 on card

CLARENCE E. McMURRAY

GOLF COURSE CONSTRUCTION

Liberty, Ind. • Ph: Area 317-458-6462

Now Building Golf Courses

Designed By

BOB SIMMONS

Golf Course Design of the Future

For more information circle number 206 on card

COMING EVENTS

Annual Florida Turfgrass Trade Show,
Plantation Field Research Laboratory, Ft.
Lauderdale, April 27-29.

Third National Grassland Field Day
and Conference, University of Nebraska,
July 12-14.

NEED TABLES? SAVE MONEY!



ORDER DIRECT FROM **FREE
MONROE CATALOG**



Why pay fancy prices for folding
tables? Order DIRECT from
MONROE! Almost 100,000 cus-
tomers save time, trouble and
MONEY by buying tables this
easy, low-cost way! Send today
for FREE catalog!

The MONROE Co., 12 Church St., Colfax, Iowa 50054

For more information circle number 110 on card

DAVID GILL

GOLF COURSE
ARCHITECT

NATIONAL BANK BLDG.

ST. CHARLES, ILL. 60174

312 584-2883

For more information circle number 204 on card

FERDINAND GARBIN

Golf Course Architect

Member American Society
of Golf Course Architects

R.R. 2, Box 186

Export, Pennsylvania 15632

Tel. 412-327-4704

For more information circle number 205 on card



INDIANA STATE FAIRGROUNDS
INDIANAPOLIS, INDIANA
Almost 1000 Golf Cars

WORLD'S LARGEST GOLF CAR SUPERMARKET

600 RECONDITIONED GOLF CARS **\$350 — \$550**

- New or like new bodies • new upholstery • NEW 195 A. H. Batteries
- new cables • new plugs • Refinished original 2-tone • Rebuilt mechanically
- Chargers included • NEW CAR WARRANTY •

Pros & Clubs: *This is the Answer!*

**Adequate Cars at a Sensible Investment to Accommodate the
Busy-Day, Weekend or Seasonal Increase in Play at Your Club.**

Buy one or a fleet. Payment plan available

Delivery anywhere on our transports.

H. COSTER ELECTRIC CAR SALES & SERVICE CO.

INDIANAPOLIS, IND

• 24 S. HARDING ST. •

243-3268

ALSO BRANCHES IN CINCINNATI, OHIO — LOUISVILLE, KY.

For more information circle number 157 on card

PUTTING GREEN PERFECTION!



- (Send for Bulletin: Stolons vs. Seed)
- Washington
 - Cohansey
 - Arlington
 - Congressional
 - Toronto
 - Pennpar

Phone: Area 313-437-2026

Hiram F. Godwin & Son Inc.

55150 Ten Mile, South Lyon, Mich. 48178

For more information circle number 197 on card

LIQUID-LUSTRE GOLF BALL WASH

Costs as little as 2c per washer per week!

- Keeps golf balls SPARKLING!
- WHITE! . . . Golfers satisfied!
- Perfectly safe for washers . . . either hard or soft water!
- Will Not cause RUSTING!
- No unpleasant odor—Ever!
- Used at fine golf courses from coast to coast!

ORDER YOUR SUPPLY TODAY!

Per Single gallon.....\$4.75

5 gallons. per each gal. can 4.50

(Order from your dealer or direct from DBA and give dealer's name.)

DBA PRODUCTS CO., INC.

Lake Bluff, Ill. 60044

Also Try
Aero-San
Shoe
Deodorizer
and Sanitizer
Another fine
DBA Product

For more information circle number 198 on card

Automatic and Manual Sprinkler Systems

Engineering Supervision

HALCO CHEMICAL COMPANY

BUCKNER Franchised DISTRIBUTOR

Greater N. Y. Metropolitan Area

Kenilworth, N.J., 07033

201-276-3298

Glen Head, L.I. N.Y., 11545

516-676-2727

For more information circle number 199 on card

ROBERT E. THOMASON GOLF COURSE DESIGN AND CONSTRUCTION

Box 41

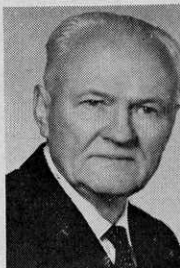
Morristown, Tennessee

Phone: 586-1667

For more information circle number 200 on card

PEOPLE IN THE NEWS

James H. Carter was appointed assistant public relations manager for McCulloch Corporation, Los Angeles, Calif.



CARTER



TODD

Harold A. Todd has become chairman of the board and chief executive officer of Wisconsin Motor Corporation, Milwaukee, Wisc.

MANUAL & AUTOMATIC TURF IRRIGATION

Design—Installation
Complete Pumping Installation

SKINNER / BUCKNER / J-M
PVC / TRANSITE / RAINBIRD

Alcoa Aluminum Portable Pipe—Pumps
RENTAL & SALES

OLDFIELD EQUIPMENT CO.

430 W. Seymour Ave., Cincinnati, O. 45216

Phone: 821-5582

For more information circle number 201 on card



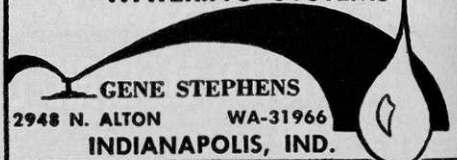
OVER 40 YEARS
EXPERIENCE IN
Automatic Golf Tees
WRITE: Dept. GF

PAR-TEE, INC.

860 E. 75th Street,
Chicago 19, Ill.

For more information circle number 202 on card

WATERING SYSTEMS



2948 N. ALTON

WA-31966

INDIANAPOLIS, IND.

For more information circle number 203 on card

Keith H. Rhodes has joined the Jacobson Manufacturing Company, Racine, Wisconsin, as chief engineer of commercial and turf products.



RHODES



ADAMS

Gary Adams has been named salesman for Wittek Golf Range Supply Company, Chicago, Illinois. He will cover the Midwest area.

Robert P. St. Germain has become the market research analyst for Toro Manufacturing Corporation, Minneapolis, Minn.

Nothing 'cut' with this
COUPON except grass
the way it should be!

Send it
to Bridgeport

Read why Manco-
Locke Handles
Easier . . .
Cuts Better . . .
Costs Less . . .



Send me **FREE Literature**
on **Manco-Locke Highwheel Mowers**

. . . and also on Locke reel and rotary mowers.
I'd like the name of closest dealer too.

(name)

(street)

(city)

(state) (ZIP)

Locke Manufacturing Cos., Inc. 1020-M Conn. Ave.
Bridgeport, Conn.

For more information circle number 122 on card

Samuel S. Mitchell

**Golf Course Architect
Designer and Builder**

18 Old Randolph Street
Canton, Mass. Tel. 617-828-1065

For more information circle number 196 on card

GEORGE FAZIO

GOLF COURSE ARCHITECT

P. O. Box 153

Flourtown, Pennsylvania

Tel. 215 242-1330

For more information circle number 194 on card

Golf Course Designing and Construction

PAUL HARNEY
GOLF ENTERPRISES, INC.

SIL PAULINI | BUS.: 563-3454 (Falmouth, Mass.)
RES.: 653-6102 (Natick, Mass.)

For more information circle number 109 on card

LAPIN AND DABLER INC.
**GOLF COURSE
ENGINEERS**

Irrigation Systems Water Supply Sewers
Drainage Buildings Studies Supervision

12015 MANCHESTER ROAD

ST. LOUIS, MISSOURI 63131

For more information circle number 195 on card

**GOLF COURSE IRRIGATION
ENGINEERS & INSTALLERS**

Any Phase or Complete Turn-Key Job

McCUNE IRRIGATION, INC.
3721 Mahoning Ave.,

Phone: 799-3231 Youngstown, Ohio 44509

For more information circle number 248 on card

COMPLETE GOLF COURSE CONSTRUCTION

Also rebuild. move tees and greens, install watering systems. Standard & Miniature.



IBERIA EARTHMOVING SERVICE, INC.
IBERIA, OHIO • Ph. Galion, O. 468-5454

For more information circle number 223 on card

"Give your course a signature"

Robert Trent Jones

GOLF COURSE ARCHITECT

P.O. BOX 304
MONTCLAIR, N. J.
201-744-3033-34

360 BRYANT STREET
PALO ALTO, CALIF.
415-324-1253

P.O. BOX 4121
FT. LAUDERDALE, FLA.
305-564-3422

For more information circle number 224 on card

SAVE LABOR and TIME
... use PIXTONE

The Proven Mechanical Stonepicker.

Picks stone—erates—pulverizes—sturdier roots.

Contact manufacturer for details and prices.

BRIDGEPORT IMPLEMENT WORKS, INC.

P. O. Box 491G—Stratford, Conn. 06497

For more information circle number 209 on card

WILLIAM JAMES SPEAR
GOLF COURSE ARCHITECT

116 WEST MAIN STREET
ST. CHARLES, ILL. 60174



(312)
584-8200

For more information circle number 225 on card

GOLF COURSE DESIGN AND CONSTRUCTION

EDMUND B. AULT Ltd.

GOLF COURSE ARCHITECT

Sculptured Greens

7979 Old Georgetown Road
Bethesda, Maryland 20014
301-942-0716

For more information circle number 227 on card

GEOFFREY S. CORNISH

**Golf
Course
Architect**

Fiddler's Green Amherst, Mass. 01002

Phone: 413-253-3913

Automate YOUR COURSE, DRIVING RANGE



25c Vends Bucket of Balls
24 hours each day - All Year 'round
ALL WEATHER-ALL MECHANICAL
5 YEAR GUARANTEE

Write today for Free Brochure

Reading Golf Equip. & Supply Co. Inc. Box 723, Reading, Pa.

For more information circle number 229 on card

TED McANLIS

GOLF COURSE ARCHITECT

"originality with practicality"

20842 ALBION ROAD

CLEVELAND, OHIO 44136

PHONE 216-238-3159

For more information circle number 230 on card



"Fine Courses At Sensible Cost"

1505 Blackstone, Fresno, California

For more information circle number 226 on card

CLASSIFIED

JOBS WANTED

Professional salesman would like to become Professional Golfer (highly skilled in both areas and willing to demonstrate proficiency)—would consider PGA Tour, country club, public relations. Write Box #229, c/o GOLFDOM.

Superintendent Class A — 25 years maintenance and construction experience. Lewis Shawyer, 3435 Overton Road, Dallas, Texas, 75216. Phone 214 - FR 4-8347.

Reliable Greens superintendent qualified in construction and maintenance. Updated in all grasses. Desires job where ability is required. G.C.S.A.A. Member. Write Box #230, c/o GOLFDOM.

Club manager or combination man and wife team — 20 years experience — can furnish best of references — willing to locate anywhere — write Ed Verplanke, 7047 West 73rd Street, Chicago, Illinois, 60638.

Greenskeeper available — over 30 years experience, best in business prefer Ala., Georgia, Florida. 9 or 18 hole. Lee House, 2801 Pontiac Drive, Tallahassee, Florida, 32301.

Canadian searching assistant with related experience in pro shop duties-available immediately. Write Dave Thomson, 130 Woodland Avenue, Beaconsfield, P. Q. Canada.

Greenskeeper. Age 53 — 16 years experience on golf courses including rebuilding of 18 hole course that had been closed during W. War 2. Landscaping business of my own past 15 years. Good Mechanical ability. References. Write Gayle Knight, Rt. #1, Box 448, Algonquin, Illinois, phone 312-428-5105.

Classified Ads

RATES: Minimum insertion \$7.00 for 20 words or less; additional words 40¢ each; in boldface type 50¢ per word. **ALL CLASSIFIED ADS ARE PAYABLE ON PLACEMENT OF ORDER.**

NO CLASSIFIED ADS ACCEPTED AFTER THE 20th OF MONTH PRECEDING DATE OF ISSUE. NO CLASSIFIED ADVERTISING OFFERING NEW MERCHANDISE OR EQUIPMENT WILL BE ACCEPTED.

Please mark all envelopes containing correspondence or checks for classified ads, **ATT: Helen Mirthes, GOLFDOM Classified.** Under no circumstances are we permitted to divulge the names or addresses of those placing blind advertisements.

Response to all box numbers ads should be addressed to the **BOX NUMBER, c/o GOLFDOM, 235 East Forty-Fifth Street, New York, New York 10017.** Replies are promptly forwarded to the advertisers. When replies to blind ads require more than 10¢ postage, the additional proper postage for forwarding must be supplied.

JOBS OPEN

Wanted — Representative for Connecticut, Eastern New York State and Long Island area to show America's leading line of Men's and Ladies' Sportswear sold in Pro shops throughout the United States. Write Box #231, c/o GOLFDOM.

Golf Course Superintendent position available after July 1, 1967. 18-hole Regulation Municipal Course in Southern California. Inquire to City Manager, City of San Clemente, P. O. Box 368, San Clemente, California.

Aggressive salesman wanted to carry short outstanding line of golf jackets and rainwear. Excellent territories open. Write Box #232, c/o GOLFDOM.

SALESMEN WANTED: To sell a full line of Emblem Caps, Golf Jackets, Hosiery, Shirts and Accessories. 10% commission. Write Box #222, c/o GOLFDOM.

Greenskeeper. 18 hole course. Two hours from New York. Semi-Public course. Salary open to qualifications. Year round work. Address advertiser Box #221, c/o GOLFDOM.

Golf Course Superintendent — Private Club, Milwaukee Area. Send resume and particulars to Box #220, c/o GOLFDOM.

TERRIFIC OPPORTUNITY FOR PRO SHOP SELLING

Top quality men's and women's apparel. Prime territories available. Good commissions. Start at once. Address inquiries, Box #210, c/o GOLFDOM.

SALES REPS WANTED for complete line of men's and women's sportswear to golf shops. Liberal commissions. Territories open: 1. New England 2. Michigan & Ohio 3. Indiana & Southern Illinois 4. Texas, Oklahoma, New Mexico, Arkansas 5. Northern California, Washington, Oregon 6. Wyoming, Montana, Colorado, Utah. Write Box #208, c/o GOLFDOM.

PRO SHOPS SALES REPS — north, south, east or west. Complete line of men's and women's sportswear — including golf shoes. **NATIONALLY KNOWN LINES.** Liberal commissions. Send business and personal summary to Box #233, c/o GOLFDOM.

MISCELLANEOUS

For sale — 2 Factory Rebuilt Electric Marketeers with Surrey Tops and new batteries \$475.00 each, and 10 Cushman 36V 1964 and 1965 with or without batteries. Priced for quick sale. Naperville Marine & Cycle Center, 429 East Ogden, Naperville, Illinois. Phone 312-355-2458.

FOR SALE — 180 ACRE — 18 HOLE GOLF COURSE WITHIN 20 MILES CITY OF OTTAWA, CANADA. FULLY DEVELOPED LOCATION, SWIMMING POOL, ETC. \$250,000. FULL STAFF MAINTENANCE AVAILABLE. FOR PARTICULARS WRITE P. O. BOX #234, c/o GOLFDOM.

For Sale — Nearly completed 9-hole, Par-3 golf course at popular Wisconsin resort area. Course on 10 acres with 12 additional acres for expansion. Full sprinkler system and new maintenance equipment. \$35,000. For further information write: Marilyn Berry, River Road, Wisconsin Dells, Wisconsin, 53965.

Buy or Lease 9 or 18 hole Golf Course. Give full particulars, including price, terms, income. Write Box #235, c/o GOLFDOM.

Santa Cruz County, California course for sale by Owner. 80 potential building sites. \$550,000.00 terms. Write Box #236, c/o GOLFDOM.

For Sale: National Cash Register in good condition. Used one year. Has fourteen totals. Especially for pro shop. Reason for sale — Course was sold. Make offer. Mrs. A. W. Pettibon, 1461 Broadhead Road, Monaca, Pa.

Your golf balls repainted polyurethane. As low as 2¢ per ball. Repainted and relettered — 7¢. Write Badger Golf Co., Rt., 2, Watford, Wisconsin.

FOR SALE — 9-HOLE GOLF COURSE AND 20-TEE DRIVING RANGE, ON 53 ACRES IN CITY OF 300,000 IN NORTHEASTERN OHIO. ESTABLISHED FOR 50 YEARS. THREE YEAR OLD 2-STORY BRICK CLUBHOUSE, \$250,000 TERMS AVAILABLE. HOL-HI GOLF CLUB, 2540 SOUTH MAIN STREET, AKRON, OHIO, 44319.

GOLF CARS FOR SALE—\$175.00 and up. Gas or Elect. Power. Most all makes. Like new demonstrators, reconditioned or as is. Single units or matched fleets. Dealers welcome. Send for price list. **NICKEY GOLF CAR CENTER,** 3100 N. Tripp Avenue, Chicago, Illinois, 60641. Area Code 312-777-0917.

PRIVATELY OWNED COUNTRY CLUB 18 HOLES FOR LEASE WITH OPTION TO PURCHASE. Write Box #226, c/o GOLFDOM.

Advertisers' Index

APRIL, 1967

ABC Tee Co.	106	Kirchdorfer Irrigation, Inc.	112
Abbott Laboratories (Faultless Golf Ball)	73, 74-75, 76	Lapin & Dabler, Inc.	115
Acushnet Process Sales Co.	2nd Cover	Larchmont Engineering Co.	104
AgriCo Chemical Co.	1	Lindig Mfg. Co., Inc.	105
Ault, Edmund B., Ltd.	116	Locke Mfg. Companies, Inc.	115
B & W Golf Ball Co.	84	McAnlis, Ted	116
Baldock, Bob, & Son	116	McCune Irrigation Co.	115
Ball-O-Matic Div., FTS Corp.	81	McLaughlin, Hugh J., & Son, Inc.	14
Bellante & Clauss, Inc.	102	McMurray & Simmons	112
Bolens Div., FMC Corp.	79	Maddox Construction Co.	106
Bridgeport Implement Works, Inc.	116	Mallinckrodt Chemical Works	68
Burgett, K. L.	29	Master Lock Co.	72
Caddy-Roll Rental Service	106	Merit Products, Inc.	94
Cast Iron Pipe Research Association	2-3	Miller, A. J.	110
Champion Co., The	86	Mitchell Rubber Products, Div. of Amerco, Inc.	50
Champion Glove Mfg. Co.	44	Mitchell, Samuel S.	115
Claro Laboratories, Inc.	88	Monroe Company, The	112
Clubscrub, Inc.	108	Moody Sprinkler Co., The	82
Colonial Gardens, Inc.	90	National Chemsearch Corp.	95
Columbia Car Corp., The	47, 94	National Golf Foundation	69
Container Development Corp.	23	Nelson Products Co.	108
Cornish, Geoffrey S.	116	Newcomb, William	110
Coster, H., Electric Car Sales & Service	113	Oldfield Equipment Co.	114
Cresline Plastic Pipe Co., Inc.	4	Orangeburg Mfg. Co.	93
Cushman Motors	12-13, 34-35, 60-61	Ottawa Silica Co.	33
Cyclone Seeder Co., Inc., The	110	Packard, Edward Lawrence, Inc.	78
DBA Products Co.	114	Palmer, Arnold, Co.	55
Dargie, Bert, Golf Co.	100	Paoli, Gino	46
Diamond Alkali Co.	10, 11	Par Aide Products Co.	59
Dolge, C. B., Co.	92	Par Golf Mfg. Co.	78
Duane, Francis J.	104	Par-Tee, Inc.	114
Dunlop Tire & Rubber Corp.	109	Park & Playground Equipment Co.	108
Du Pont de Nemours, E. I., & Co.	77	Philadelphia Carpet Co.	107
East Penn Mfg. Co.	80	Rain Bird Sprinkler Mfg. Co.	87
Eastern Golf Co.	15, 96	Rain-O-Mat Sprinklers, Inc.	98
Enrich, Henry A., Co., Inc.	70	Ram Golf Corp.	67
E-Z-GO Car Div. Textron, Inc.	89	Reading Golf Equipment Co.	116
E-Z Rake, Inc.	104	Reliable Knitting (American Cyanamid Co.)	49
Fairway Construction Co.	96	Rogers Mfg. Co., Inc.	98
Faultless Rubber Co., The (See Abbott Laboratories)		Roseman Mower Co.	6
Fazio, George	115	Royer Foundry & Machine Co.	70
Ford Tractor & Implement Operations (U.S.)	51	Ryan Equipment Co.	101
Garbin, Ferdinand	112	Safari LP-Gas Water Cooler	100
Gill, David	112	Skinner Irrigation Co., The	63
Godwin, Hiram & Son	114	Spear, William James, & Associates	116
Golfcraft, Inc.	97	Sports Award Co.	100
Gordon, William F.	100	Stafford, A. G., Co., The	78
Graves, Robert Muir	110	Standard Mfg. Co.	21
Grimm Stamp & Badge Co.	82	States Hand Knit Crafts	20
Halco Chemical Co.	114	Stauffer Chemical Co.	83
Hamilton Bros. Mfg. Co.	84	Stephens, Gene	114
H & E Sod Nursery, Inc.	86	Stevens Appliance Truck Co., Club Car Div.	7
Harley-Davidson Motor Co.	65	Stewart In-Fra-Red, Inc.	102
Harney, Paul	115	Thomason, Robert E.	11A
Harris, Robert Bruce	96	Thompson Mfg. Co.	71
Harrison, James G.	78	Travelin Power Sprinkler Co.	103
Hercules Incorporated	85	Trojan Battery Co.	91
Hinland Bentgrass Commission	112	Trophy & Medal Shop, The	72
Hillrich & Bradshv Co., Power Bilt Div.	31	Uniroval (United States Rubber Co.)	4th Cover
Hornung's Pro Golf Sales, Inc.	104	United Shoe Machinery Corp.	80
Iberia Earthmoving Service, Inc.	116	United Sports Corp.	9
International Harvester Co.	18-19	Victor Golf Co., PGA Div.	99
Izod Ltd., Div. of David Crystal	3rd Cover	Wadsworth Co., The	104
Jacobsen Mfg. Co.	111	Warren's Turf Nursery	39
Jato Mfg.	88	Western Golf Sales, Inc.	80
Jones, Robert Trent	116	Wilson, Andrew, Co.	32
Jordan, Bob	102	Williamstown Irrigation Co.	17
		Wittek Golf Range Supply Co.	90
		Woodside Golf & Park Supply Co.	92

Buyers' Service

For prices & literature — check items needed — mail this sheet to:

GOLFDOM, 235 East Forty-Fifth Street, NEW YORK, N. Y. 10017

GOLF COURSE

Aerifying machines:

Fairway ☐ Greens ☐

Algae Killer (ponds)

Architects: course ☐

Ball mark repair tool

Ball washers (tee)

Bamboo whipping poles

Batteries (golf car)

Benches (tee)

Bird houses

Brown-patch preventatives

Color spray for turf

Comfort Stations

Compost mixers

Crabgrass control: Regular ☐

Pre-emergence ☐

Drinking fountains:
(Reg. ☐ L.P.-gas operated ☐)

Edging machines

Fertilizers Solid ☐ Liquid ☐

Flags (greens) ☐ Flag poles ☐

Fungicides

Golf Cars: Elec. ☐ Gas ☐

Golf course furniture

Haul carts (hyd. lift)

Herbicides

Hole cutters

Humus ☐ Peat moss ☐

Insecticides

Irrigation consultants

Lapping-in Machine

Lighting equip.: Miniature ☐

Par-3 ☐ Regulation Course ☐

Practice green ☐ Parking ☐

Matting—seedbed protection.

Miniature Course Const'n

Min. Course Obstacles

Min. putting surface

Mowers: putting green ☐

rotary ☐ tee ☐

fairway ☐ rough ☐

Mower Grinders

Pipe

Rakes (trap)

Refreshment stands

Fixed ☐ Portable ☐

Rollers: Power ☐ Tractor ☐

Sand: Traps ☐ for compost,

and soil conditioning ☐

Seed: fairway ☐ green ☐

Signs: yardage ☐ direction ☐

Sod cutter

Soil conditioner

Soil screeners ☐ Soil shredders ☐

Soil pasteurizers

Spikers: greens ☐ fairway ☐

Sprayers: power ☐ hand ☐

Spreaders: greens ☐ fairway ☐

Sprinklers: f'way ☐ green ☐

Stolons — Bent ☐ Bermuda ☐

Stone picker (mechanical)

Sweepers: greens ☐ f'way ☐

Sweepers-mulchers (turf)

Tee Markers

Tee Shelters

Thatch cutting machine

Thatch cutter & vacuum removal

Tile Probe

Tractors

Trailers (utility)

Trees ☐ Shrubs ☐

Tree care service

Trucks (utility)

Water aerator for pools & ponds

Water coolers (L.P.-gas operated)

Water systems, fairway

Weed chemicals
for turf ☐ for water ☐

PRO SHOP

Bags: Comp. ☐ Leather ☐

Bag & club container (storage-travel)

Bag storage racks

Bag carts ☐ electric ☐

Bag Tags ☐ Guest Tags ☐

Balls: Regular ☐ Range ☐

Ball dispenser (coin operated)

Ball Striper (range)

Ball Washers: Tee ☐ Range ☐

Ball washer, counter & dispenser

Batteries (golf cars)

Battery chargers

Caps and hats

Charge books; pro shop ☐

green fee ☐

Cleaner for iron clubs

Clubs: Woods ☐ Irons ☐

Putters ☐ Range ☐

Club cleaner-polisher

Club head covers

Club repair supplies

Display fixtures

Floor covering (spike resistant)

Gasoline motors (golf car)

Golf Cars: Elec. ☐ Gas ☐

Golf car replacement seats

Golf car trailers

Golf car transmissions

Golf gloves

Golf grips: Leather ☐ Comp. ☐

Golf Practice Devices

Golf shoes: men's ☐ women's ☐

Golf Shoe Brush & Scraper

Grip cleaning machine

Grip slip preventative

Handicap computer service

Handicap racks ☐ cards ☐

Insect repellent

Lighting equip. — range

Mech. Range Ball Retriever

Practice driving nets

Rubber-spiked Overshoes

Score Cards ☐ Charge checks ☐

Shoe rack (for locker doors)

Sportswear: Shirts ☐ Socks ☐

Sport jackets ☐ Rain jackets ☐

Windbreakers ☐ Slacks ☐

Shorts: Ladies ☐ Men's ☐

Tee bag racks

Tee mats: Range ☐ Net ☐

Trophies

Teeing device (automatic)

CLUBHOUSE

Bath mats

Bath slippers—disposable

Carpeting

Dining Room:

Linens ☐ Silverware ☐

China ☐ Glassware ☐

Disinfectants

Duplicating machines

Floor covering—spike resistant

Folding Table (Banquet)

Game Tables

Greeter pins

Health baths

Locker Name Plates

Lockers

Locker room toiletry products

Locks (combination) for lockers

Massage Equip.

Modernization (interior)

Printing

Runners for aisles—spike resistant

Carpeting ☐ Composition ☐

Rubber ☐

Shoe equip. & supplies

for locker attendant

Towels (golf, disposable)

Send information (please fill as completely as possible)

To: Name _____ Your Title at Club _____

Club _____ Address _____

Town _____ ZIP Code _____ State _____ Check if new club ☐

SEE REVERSE SIDE

GOLFDOM

THE MAGAZINE OF GOLF BUSINESS

ESTABLISHED 1927

ADMINISTRATION • MANAGEMENT • OPERATING • MERCHANDISING • MAINTENANCE • SUPPLIES

41st YEAR OF PUBLICATION

Golf's clearinghouse of information on the most successful operating policies, practices, and products for your club.

Monthly, GOLFDOM presents the latest, most practical ideas on golf club administration, management, maintenance and service.

Make certain those with the operating responsibilities at your club are kept informed by reading The Magazine of Golf Business.

Use the form below. We'll see that authorized personnel get GOLFDOM.

FILL IN BELOW — MAIL THIS PAGE TO

GOLFDOM CIRCULATION DEPARTMENT
235 East Forty-Fifth Street, New York 10017, New York

Club or Course Name _____ No. of Holes _____

Mail Address _____ Number of Members _____

City _____ State _____ Zip Code _____

TYPE OF COURSE

Please check below

- | | | | |
|---------------------------------------|---|--|---|
| Pitch & Putt <input type="checkbox"/> | Established Course <input type="checkbox"/> | New Course <input type="checkbox"/> | Driving range <input type="checkbox"/> |
| Private <input type="checkbox"/> | Semi-Pvt. (Fee) <input type="checkbox"/> | Municipal (city, county or state owned) <input type="checkbox"/> | |
| | Resort Course <input type="checkbox"/> | Public <input type="checkbox"/> | |
| Par 3 <input type="checkbox"/> | Military <input type="checkbox"/> | School <input type="checkbox"/> | Company owned <input type="checkbox"/> |
| Range <input type="checkbox"/> | | | |
| Restaurant <input type="checkbox"/> | Bar <input type="checkbox"/> | Pool <input type="checkbox"/> | Tennis Court <input type="checkbox"/> |
| | | | Hotel Accommodations <input type="checkbox"/> |

President _____ Street _____

City _____ State _____ Zip _____

Manager _____ Street _____

City _____ State _____ Zip _____

Course Superintendent _____ Street _____

City _____ State _____ Zip _____

Professional _____ Street _____

City _____ State _____ Zip _____

SEE REVERSE SIDE FOR BUYERS' SERVICE INFORMATION