

*Wherever golf is played . . .*

Par Aide Tee Equipment has proven to be practical and also adds beauty to the tee.

The portable tee accessory can be easily moved for mowing and tee changes.



FOR COMPLETE LINE OF PAR AIDE GREENS  
AND TEES EQUIPMENT—WRITE FOR CATALOG

**PAR AIDE PRODUCTS COMPANY**  
296 NORTH PASCAL STREET • ST. PAUL, MINNESOTA 55104

DEPT. G

For more information circle number 146 on card



**BETTER  
GREENS  
CARE . . . with**

rugged 2 h.p. model 64  
SP-24" width—  
durable finish

**E-Z RAKE!**

- removes thatch
- improves aeration
- "stands up" grasses
- cuts costs

"E-Z Rake . . . best machine we ever bought!"

Write for catalog and prices today.

**E-Z RAKE, INC.**  
Acton, Indiana

For more information circle number 113A on card

**Creasey not PGA czar  
but carries weight**

Robert Thomas Creasey, 52-year-old New York attorney who is now executive director of the Professional Golfers Association of America, said before taking office on Jan. 1, "I'm no czar, but I guess I'll be running the whole show."

Creasey, Tom Crane's successor at a reported \$50,000 salary, worked closely with Max Elbin before the Burning Tree Club (Bethesda, Md.) head professional became the PGA's new president. Virtually unknown in the game, he is nevertheless familiar with its problems.

His legal advice and proposal of a pension plan sold Creasey to Elbin. Television and the Tour are among important matters that Creasey will review. He is convinced of golf's growth potential and sees no reason for clashes within the organization.

A member of the Canoe Brook Country Club near his home in Short Hills, N. J., Creasey is a 6-handicap golfer.



**There's Carlyle Golf Club Quarry Tile at The  
PGA National Golf Club . . .**

A proud part of this handsome new institution at Palm Gardens, Florida, it combines beauty and durability with a rippled, non-slip surface for cleated shoes. In a variety of rich colors for new floors or resurfacing. See your ceramic tile contractor, or write:

The Carlyle Tile Co., Ironton, Ohio; or The Mosaic Tile Co., 909 Railroad St., Corona, California 91720



For more information circle number 147 on card

KEEP GREENS, FAIRWAYS  
*in Championship Form*

with  
**PMAS**

**REMEMBER** *There is only ONE*

the original, patented product  
of W. A. CLEARY CORPORATION

Apply PMAS early for dual control of BOTH disease and Crabgrass. PMAS has stood the test of time . . . the genuine PMAS has demonstrated its worth, over the years, to the golf course superintendent and is now an established control chemical for BOTH disease and Crabgrass on courses in all parts of the country. Be safe, be sure . . . if PMAS does not appear on the label it is not the genuine PMAS, patented and manufactured by W. A. Cleary Corporation.



WELCOME TO  
BOOTH 305  
1966 TURF  
CONFERENCE

## SPOTRETE

75% Dry Thiram Fungicide

## CADDY

Liquid Cadmium for Turf Disease

## METHAR

Lightest concentration of DSMA-Disodium Methylarsonate for Crabgrass and Dallisgrass in both liquid and powder.

## ALL-WET

makes water "wetter" for better penetration in all turf areas, especially thatched or compacted spots.

## AMA2, 4D

Amine Methylarsonate plus 2, 4-D liquid for Dallisgrass and weed control.

## THIMER

A broad spectrum fungicide, containing Thiram and Organic Mercury in wettable form; in pre-measured canisters.

## AMA

Amine Methylarsonate, liquid for Crabgrass and Dallisgrass control.

## M C P P

For weed control on bentgrass greens and fairways; bluegrass and fescues.

**W. A.**  
**CLEARY**  
CORPORATION

New Brunswick, New Jersey

Skokie, Ill.

Canada

For more information circle number 148 on card

Allis-Chalmers engineers set out



# to build the best electric golf car

## **INTRODUCING THE ALL-NEW '66 ALLIS-CHALMERS**

You would expect ruggedness, dependability, and high performance in any machine built by one of the top 100 companies in the country. Now you get all this in a sleek, stylish, all-new golf car. The frame is unitized, all-welded steel. New controls give smooth, smooth starts. Coil springs and shock absorbers on rear wheels and aircraft-type front fork suspension insure comfort. Brakes are heavy-duty expanding shoe type for safety. New design gives low center of gravity to travel the steepest hillsides. Many other new features. Here's the one golf car that really delivers. Prices start at \$995. Send for brochure SP121. Write Sports Products Sales, Allis-Chalmers, Milwaukee, Wisconsin 53201.



For more information circle number 149 on card



# The elements of Leadership



GOLF MAGAZINE, the world's largest-selling golfing publication, takes the lead in saluting the game's most proficient players . . . paying tribute to their contributions to the progress of the game . . . with the annual announcement of GOLF's All-American team.

Again this year, the editors polled the nation's golf writers and sportscasters to determine the eight greatest golfers of 1965 . . . those judged to be most proficient with driver; fairway woods; long, middle and short irons; pitching and sand wedge and putter.

Members of the All-American team for 1965 were feted by the industry, Golf Hall of Fame members, leaders in business and government at GOLF's Second Annual Awards Dinner in New York on December 13.

GOLF'S establishment of this annual national recognition of the game's most skillful professionals is but one facet of its continuing program of projects designed to build and promote the game's national stature. Such are the responsibilities—and the opportunities that go with leadership.

## **GOLF MAGAZINE**

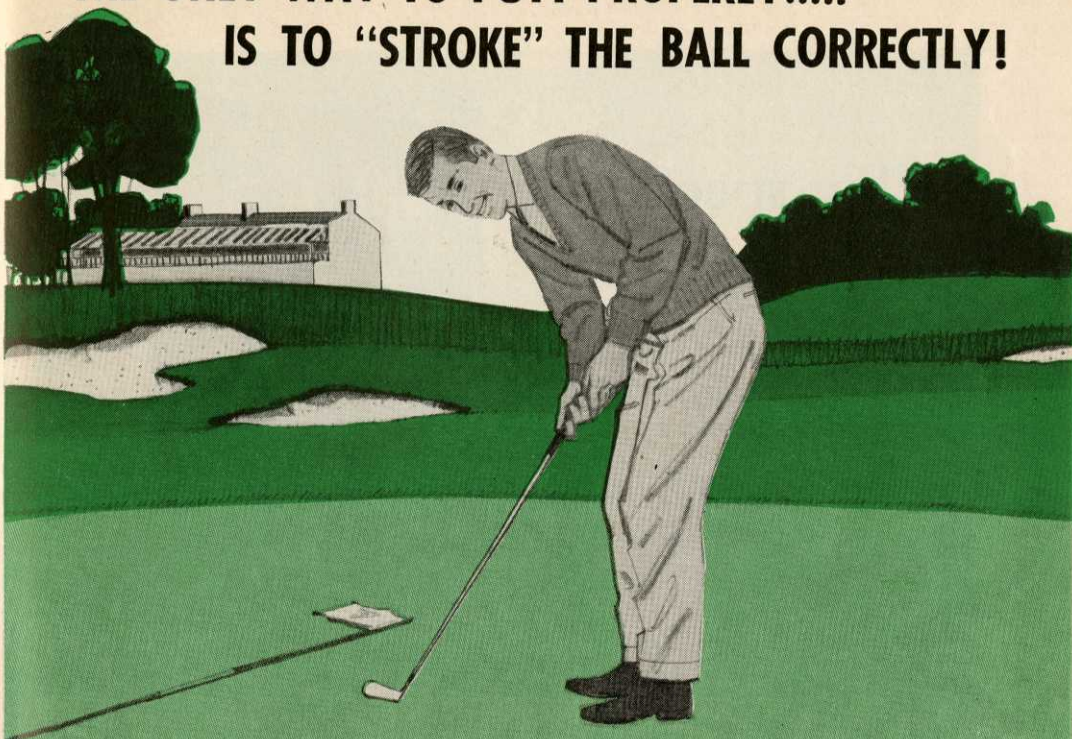
800 Second Avenue, New York, N.Y.  
325,000 circulation . . . 845,000 readers



**GOLF MAGAZINE's April "Masters" issue is one of the major golf publishing events of the year. Advertising forms close February 11.**

For more information circle number 150 on card

**THE ONLY WAY TO PUTT PROPERLY.....  
IS TO "STROKE" THE BALL CORRECTLY!**



**BUT TO "STROKE" IT AND SINK IT, IT'S THE  
PUTTING SURFACE THAT COUNTS.**

**A PERFECT PUTTING SURFACE CAN BE OBTAINED  
ONLY WITH STOLONS!**

**RESEARCH HAS MADE *Warren's* STOLONS THE BEST  
THEY ARE GROWN ON STERILIZED SOIL  
FREE FROM WILD BENTS and POA ANNUA**

**FOR THE FINEST GREENS  
WITH PERFECT, EVEN  
TEXTURE AND COLOR**

**PLANT  
*Warren's*  
STOLONS**

***Warren's* TURF NURSERY**

8400 W. 111th St., Palos Park, Illinois  
Send us details on beautiful, hardy, vigorous greens  
and tees with Warren Stolons • Warren' Sod

**FREE LITERATURE**

- "Construction and Planting of Putting Greens with Creeping Bent Sod or Stolons."  
 "Genetic Variability in Creeping Bent" A study of seed versus stolons for planting putting greens.

Club Name \_\_\_\_\_

Address \_\_\_\_\_

City \_\_\_\_\_ State \_\_\_\_\_ Zip \_\_\_\_\_

Superintendent \_\_\_\_\_

# Play speeded up in kitchen

*Olympia Fields C.C. setup renovated, enlarged; new electrical appliances added.*

By S. H. ORNE

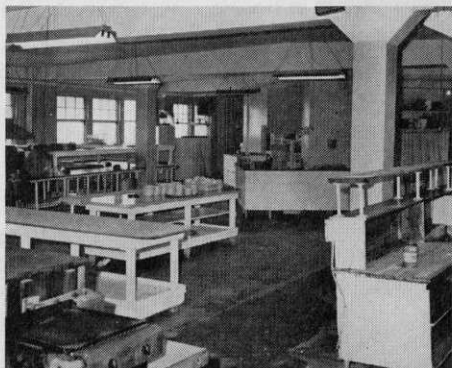
“**O**peration Culinary” was a top project in the recent 50th anniversary observance at the Olympia Fields Country Club, Olympia Fields, Illinois. The kitchen was renovated and enlarged, and the latest electrical equipment installed.

Chef Konstantin Duduks is highly pleased with the improvement in efficiency and speedup of service. He is particularly happy with a new electric dishwasher. “Since its installation,” he said, “the dishes are clean as soon as a party is over. We used to wash dishes for hours and hours after a big party.”

Olympia Fields has 475 regular and



*James Di Santo, manager, and Chef Duduks, right, examine new oven stoves and broilers.*



*Dismantling the kitchen before it was enlarged, modernized and re-equipped.*

120 social members, many of whom live in the clubhouse and nearby cottages. Meals are served three times daily year round except on Christmas Day.

“Yes, that dishwasher is a big lift,” continued Chef Duduks. “I usually serve breakfast to about 140 guests, lunch to 200 and dinner to 320. For a wedding I usually serve 200 or 300; for a party, 500 or 600. But we are equipped to serve as many as 1,000 in the main dining room, the Normandy Room, the Palm Room and at the 73rd Hole. There are also 25 kitchen employees and 30 other employees of the club to be served in their special dining room.”

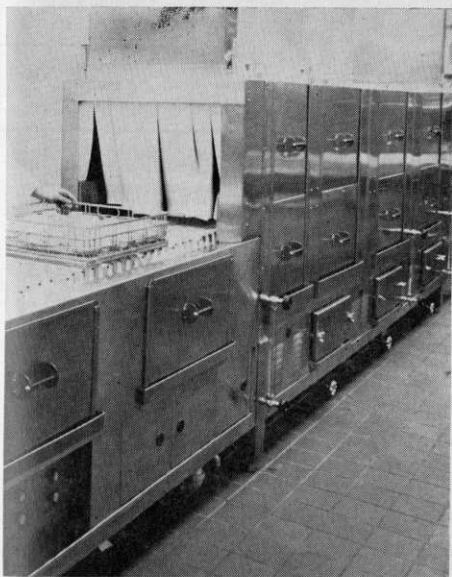
An old, poorly located kitchen west of the main entrance to the clubhouse was still used in recent years as an extra kitchen during busy times in the summer and sometimes as the only one in the winter when few meals were served. Truck deliveries of food and supplies were made at the other end of a hall “about a short city block” east of the main entrance. Opening off this hall are several rooms for the storage of canned goods, napkins and other supplies as well as walk-in coolers.

A new kitchen was more efficiently located between the point of delivery and dining rooms, but the storage was still basement-based.





*Konstantin Duduks, chef, left, and John Di Maggio, second cook, study new equipment.*



*"The new dishwasher," says Chef Duduks, "has saved hours of work after parties."*

With the renovation and enlargement of the newer kitchen, the coolers were sited on the main floor. The canned goods also will be provided space upstairs, and a lift will be installed for transfer of basement deliveries to the main floor, near the kitchen.

The dishwashing machine has a rackless belt conveyor and three tanks with wash and rinse tank heated by a thermostatically controlled steam injector and final rinse water heated to 185 degrees.

The new equipment includes, among other ultra-modern kitchen aids, five portable storage carts.

Chef Duduks is also proud of a new microwave oven. He uses it for chops and later browns them in a broiler for flavor. It is not generally suitable for thorough cooking, but is ideal for reheating and single servings of pre-cooked food. Fresh vegetables, including baked potatoes, are cooked in two to nine minutes.

## TURF REPORT '65

Continued from page 34  
have been unfavorable in some instances on very acid or alkaline soils.

Pre-San and/or Betasan show promise as a *Poa annua* control. Dr. Burt in Florida recommends it along with other materials for pre-emergence control on Bermuda where no overseeding will be done. Pre-San was certainly inhibiting *Poa* recovery on two test greens in western Iowa last spring. Unfortunately, bent coverage was poor, so lots of bare ground existed where the chemical stopped *Poa* from germinating.

Pre-emergent chemicals are dangerous unless a good stand of desirable grasses is present. Dr. Engel at Rutgers reports some chemicals inhibit root development of the good grass as well. They make the desirable turf more subject to drought injury. This calls for more frequent watering to prevent wilt. Frequent irrigations or too much water are credited by several turf experts as being a major cause of the *Poa* problem in the first place.

All of the foregoing emphasizes the

need to test new materials under actual golf conditions before embarking on an overall program. Each course should do this on its own, relying on experiment stations and manufacturers' research for leads, instead of the gospel truth, as to what might happen.

In Milorganite Turf Bureau tests, new materials are applied at one-half; the recommended, and double the recommended rate. Plot size need not be large. We use 4' x 10' plots as a standard, and try to replicate these three rates under different growing conditions on the same course. Wet vs. dry areas, heavy vs. light traffic, different grasses and different heights of cut add to the worthwhile information. Fall vs. spring treatments often give drastically different results.

The start of any new year with many golf course superintendents coincides with their annual meeting. This has been held in late January or early February. Some suppliers claim superintendents do most of their buying after attending this

Continued on page 92

### Bob Jordan Golf Course Constructor Irrigation Systems

"I Supervise All Work"

235 State St., East Peoria, Illinois

Phone: 699-6974 or 673-1067

For more information circle number 152 on card

### GOLF COURSE DESIGN AND CONSTRUCTION EDMUND B. AULT GOLF COURSE ARCHITECT

*Sculptured Greens*

11607 Grandview Avenue  
Silver Spring, Maryland  
301-942-0716

For more information circle number 153 on card



- RANGE
- PAR 3
- MINIATURE

Equipment  
Supplies • Fixtures

Consulting and  
Contracting Services

Write for  
COMPLETE  
CATALOG

**WITTEK Golf Range Supply Co., Inc.**

3650 AVONDALE • CHICAGO, ILLINOIS 60618

For more information circle number 154 on card

### CUSTOM MADE WOODS

#1 THRU #15

### CUSTOM MADE PUTTERS

Including Famous "WON-PUTT" &  
"PRO'S OWN"

### Repairs-Any Make Club

Fast Service — Reasonable Prices  
Write for Catalogue & Price List

*Bert Dargie* GOLF CO., INC.

3030 SUMMER AVE. • MEMPHIS, TENN. 38112  
PHONE 324-4688 AREA CODE 901

For more information circle number 155 on card