

TRUST THE MAN
WHO WEARS THIS BUTTON



“MR. GOLF CAR” IS YOUR DISTRIBUTOR... AT HEADQUARTERS YOU

Distributor has the service facilities. Together it's an unbeatable team—in fact it's the nation's number one golf car team. A mighty important reason for choosing and staying with Cushman!

If you don't know who “Mr. Golf Car” is in your area, write us. Also, we have a wonderful new full-color golf travel folder we know you'll enjoy seeing. We'll be glad to send it along.

CUSHMAN MOTORS

1054 N. 21st. St., Lincoln, Nebraska

A DIVISION OF OUTBOARD MARINE CORP.

PROOF

Continued from page 58

we see no reason for the application of a different rule. In the only case involving an injury on a golf course to which our attention has been called, we find support for this conclusion. (Citation) . . .

"We must now determine whether reasonable minds could differ on the question of whether or not defendant was negligent under the facts and circumstances related above. We conclude, after weighing the facts as required by the rules set forth above, together with our slip and fall cases, that the court erred in directing a verdict. Although *Farfour v. Mimosa Golf Club*, supra, came to a different result, it is clear that if the plaintiff there had not been at a place *outside* the fairway and where he was not supposed to be, the result would have been otherwise. The accident here occurred in the middle of the fairway which plaintiff properly traversed.

"Concerning defendant's passing comments that under the proof plaintiff must have been negligent because of the ice which he said he did not see, but which

Reverend Folk testified he saw, or that plaintiff had assumed the risk if he proceeded under the circumstances, we would only add that here, too, we think reasonable minds could differ and that plaintiff had made a prima facie case for recovery. (Citations)..."

After pointing out that the burden of proving the plaintiff's possible contributory negligence was on the defendant and not on the plaintiff, the Supreme Court reversed the judgment of the trial court and ordered a new trial.

Two justices dissented from the majority view and one of them wrote a dissenting opinion in which he contended that the fact that 87 persons had played the course in the preceding days without incident negated the conclusion that the defendant operator of the course had been guilty of negligence. He also said that in order to discover the condition which caused the plaintiff's fall, a foot by foot inspection of the course would have been necessary, and that such an inspection should not be required. (*Jones v. New Mexico School of Mines*, 404 P.2d 289.) •

TURF TROUBLES?



try our line of tested, trusted treatments
for finest turf!

- FUNGICIDES
- HERBICIDES
- INSECTICIDES
- LIQUID & SOLUBLE FERTILIZERS
- WETTING AGENTS

write for our FREE Catalog



ALFCO ROKEBY CO., INC.

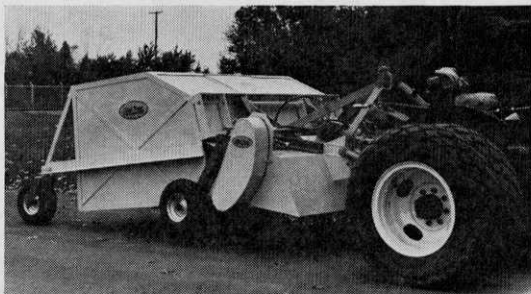
Phone 373-1394

P. O. Box 267 • Marietta, Ohio

For more information circle number 129 on card

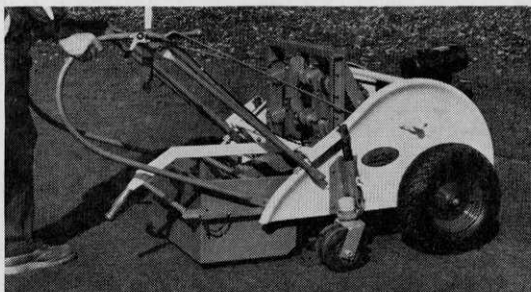
Use West Point equipment for one-man maintenance of turf. Save time and manpower with minimum disturbance to the golfer.

ONE MAN does it fast. Use the **MVG-3 Master Verti-Groove** and **TCM-3 Catch-Master** to Verti-Groove or overseed fairways in one operation. Save time and manpower. Give the golfer more playing time.



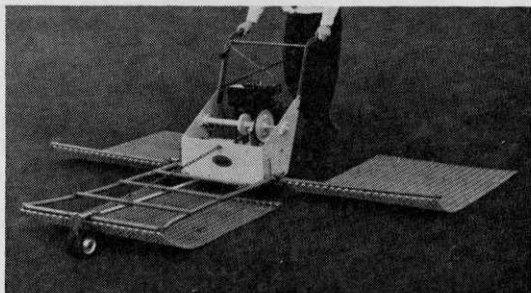
The **MVG-3 Master Verti-Groove** and **TCM-3 Catch-Master**. Proven the best fairway renovator of 1965.

ONE MAN does it fast. Use the **MC-5 Vertifier** with new **Lifting Device** and rubber **Flexi-pads** to core and clean greens in one operation with no disturbance to the golfer.



The **MC-5 Vertifier** with **Core Catcher**, new **Lifting Device** and **tine-mounted rubber Flexi-pads**. Proven the best puncher in 1965.

ONE MAN does it fast. Use the **3-gang PD-1 Power Drag** to reduce green maintenance time. Save manpower. Mat greens three times as fast.



Use the **PD-1 Power Drag** to save time and manpower. Proven the best labor-saver of 1965.

See West Point equipment — Booths 404 - 407, GCSAA Show, Kansas City, Mo., Feb. 13 - 17, 1966

WEST POINT PRODUCTS CORP.

WEST POINT, PA.

For more information circle number 130 on card

Quality blended wetting agent

AQUA-GRO

NON-IONIC ORGANIC WETTING AGENT

CONTENTS: 100% active ingredients, 100% water-soluble.

LICENSE AGREEMENT: [Small text regarding license agreement]

CONTAINS: 1.2.3.2. 4oz. net. 16,000 sq. ft. per gallon.

Liquid turf fungicide

AQUATROLS® - PMA
LIQUID TURF FUNGICIDE

ACTIVE INGREDIENT: Phenyl Mercuric Acetate 10%
INERT INGREDIENTS 90%

POISON: Antidotes
Extends if spilled on skin wash with soap and water. Inhaled if swallowed give milk or water of egg beater with water. Wash in abundance of water. If inhaled with or without liquid with water. Call a physician immediately.

WARNING: If spilled on skin flush off at once with cold water to prevent severe skin burns. Do not breathe spray mist. Do not get in eyes or on skin or on clothing. Keep away from children and animals. May produce delayed chemical burns. Wash thoroughly after handling.

*CHECK WILT BEND AQUATROLS PMA AND AQUA-GRO FOR 2-18. *CMA 363 AUTHORIZED DISTRIBUTOR

AQUATROLS CORPORATION OF AMERICA

Low cost wetting agent

AQUA

NON-IONIC ORGANIC WETTING AGENT

AQUATROLS CORPORATION OF AMERICA
217 ATLANTIC AVE., CAMDEN, N. J.

Chemical control of wilt

CHECK WILT with

stoma seal®

a product of

AQUATROLS CORP. OF AMERICA
217 Atlantic Ave., Camden, N.J.

Aquatrols Corporation of America
217 Atlantic Ave., Camden, N. J.

Superintendents exhibit scores

New England GCSA's display of clubhouse replica, 6-hole green is true showmanship.

Showmanship of the type that makes winning propaganda for the golf course superintendent was exhibited by the GCSA of New England at the Eastern States Exposition, Springfield, Mass. Advertising authorities are giving the New England superintendents credit for a smart, well-timed reminder that golf course managers ought to be figured into the nation's highway beautification plans.

The 1965 GCSA of New England exhibit was the association's second at the well attended annual exposition. The superintendents learned from their first display in the Massachusetts building, which was neat but didn't score. Forty members of the association took time to work on the second exhibit and to be at the display in representing superintendents to the public. The GCSA men were identified by their uniform hats.

Arthur E. Anderson, recently retired superintendent, Brae Burn C.C., West Newton, Mass., was the coordinator of personnel and Leon V. St. Pierre, superintendent, Longmeadow C.C. and GCSA of New England president, was general chairman.

The exhibit showed a section of a clubhouse and had a contoured six-hole putting green as features of a Cape Cod scene. A synthetic nylon grass with a rubber base was used for the green. It looked attractively grassy and had a quite realistic putting speed. The superintendents had learned from previous experience that live turf—despite expert care indoors—would not stand the heavy traffic for nine days, and would give off an unpleasant odor after a few days. The green was on an elevated stage which was used for a fashion show at 2 p.m. and 8 p.m.

Continued on page 66



18

best
partner
a flag
ever had

Lewis Line

"REGULATION"
**FIBERGLASS
FLAGPOLES**

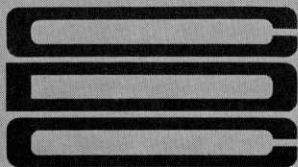
Lewis Line fiberglass flagpoles are flexible, lightweight, require no maintenance, and are low in cost. All the features you have ever wanted in a flagpole are combined in Lewis Line poles ... proved superior in over ten years of use on courses throughout the country. They are offered in all popular lengths, in white and yellow, and with either red or black striping. Special lengths can also be furnished.

... AND LEWIS LINE FLAGS

Highest quality cotton bunting or 100% nylon, fly ends double hemmed, two needle nylon thread stitching. Plain or numbered and in a wide selection of colors to choose from. Also directional flags and pennants. Canvas head, three grommets and tie tapes. Full 14"x20" size.

See your golf dealer or write for brochure and prices today.

CONTAINER DEVELOPMENT CORP.
411 Monroe St. Watertown, Wis. 53094



There was a preview of the exhibit staged for the nervous association officials and New England states' governors and their families the Sunday before the Eastern States Exposition opened. The gaiety of that informal putting competition gave an accurate forecast that the superintendents had a winning show ready to open.

This tastefully presented exhibit educated the superintendents as well as many hundreds of the public. The golf course men admitted they often don't realize how many of the public are not golfers and of the golfing public how many do not appreciate the part the superintendent plays in putting on the golf show.

Leon V. St. Pierre, the New England group's chief, in reviewing the results of the showing at Springfield said:

"It is difficult to measure what tangible results we achieved from this type of venture but we do know one thing surely was accomplished: we got closer to the public and won the good-will of many who'd never paid much (if any) atten-

tion to us and our work before this affair. The mere act of getting up there and shaking hands and saying 'How do you do' to the general public is a tremendous asset to us.

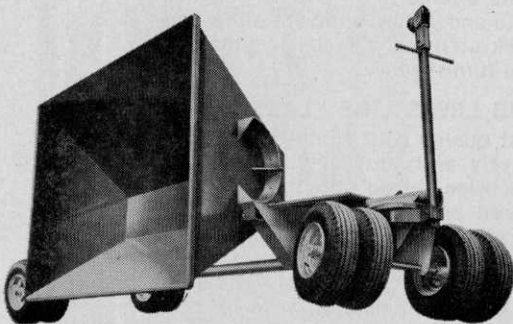
"As the people viewed our exhibit and read our emblematic sign some had no idea of what it meant, others translated it to mean that we are the head greenkeepers and still others believed that we are professionals.

"Many of those at the Eastern States Exposition were golfers. They included a rather sophisticated group who would stop to chat with us about the game or sympathize with us about what the drought was doing to golf turf in the northeast. The putting course and our background setting gave our exhibit the atmosphere of a club—and club atmosphere certainly means conversation.

"A number asked for lawn advice. There were enough of these to reassure us that the golf course superintendent is regarded as the foremost authority on fine turf in his area.

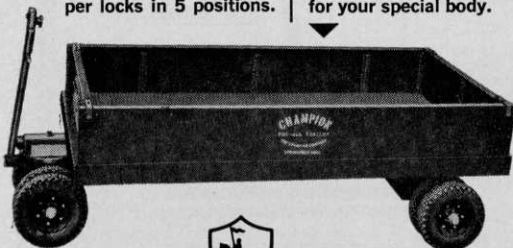
"It is not enough to have an attractive exhibit," said St. Pierre. "You need people

Continued on page 68



5,000 lbs. 1 cu. yd., or 4,000 lbs. ¾ cu. yd. capacities. Roll-dump hopper locks in 5 positions.

5,000 lbs. capacity. Pictured with side and end boards...also available; flat bed, or chassis only for your special body.



established 1878



Jobber Inquiries Invited

PROFESSIONAL GROUNDSKEEPERS haul all WITH CHAMPION doo-all

DOO-ALL can DO IT ALL... haul any load over turf or over the road. It's the professional's utility trailer... massively built for hard usage, yet extremely mobile. 4.80 x 8 wide-tread pneumatic tires ride gently over fine turf... and DOO-ALL can safely cruise, fully loaded, over the road. Proven in 16 years of use by professional grounds maintenance men. Send Now for complete specifications of all DOO-ALL models.

Yes, please send me complete specifications for your DOO-ALL Trailers, all models. (Please print)
THE CHAMPION COMPANY, Springfield, Ohio 45501

my name _____ position _____
organization _____
street _____
city _____ state _____ ZIP _____

For more information circle number 133 on card



In only five years this perfect, uniform hedge grew to ten feet from 2 to 3 foot Tallhedge plants 30 inches apart. Never trimmed, except to even up the top at picture time, the hedge maintains a naturally neat appearance.

Now Cole's beautiful new Tallhedge gives you perfect hedges and screens at low cost

Rhamnus frangula columnaris. P.P.1388. Luedy

Cole's New Tallhedge is the ideal screen for:

**Tees and Greens
Practice Greens
Swimming Pools
Tennis Courts
Adjacent Property
Nearby Traffic
Storage Areas**

**Wholesale orders only
Send for our Catalog**

NEW BEAUTY. Now, for the first time, Tallhedge, the most beautiful new hedge plant introduced in America in decades, fills a long-standing need for a tall, narrow hedge that always looks freshly trimmed.

DENSE, FAST-GROWING. Tallhedge quickly forms a neat, compact, narrow hedge or screen 12 to 15 feet high, yet can easily be kept as low as 4 feet. Averages 4 feet wide at maturity.

STAYS NEAT. Tallhedge needs practically no care. The hedge illustrated above was never side-trimmed. Note how the dense foliage grows almost from ground level.

VIGOROUS FOLIAGE. Lustrous, heavy, dark green leaves are enhanced by a summer-long succession of attractive berries changing from cream to pink, red and black.

LOW COST. 30-inch spacing is ideal for Tallhedge—takes 1/4 to 1/3 as many plants as a privet hedge of equal length at about the same cost per foot. Saves planting cost, too.

EASY MAINTENANCE. Tallhedge is extremely hardy and adaptable—needs no special care. Sides need not be trimmed. Slight shearing at top when young will maintain an even line at any desired height.

THE COLE NURSERY CO.

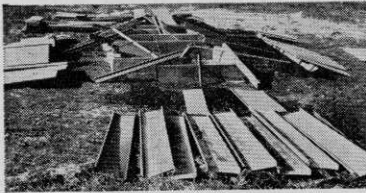
Phone Elmwood 2-3121

**HEADQUARTERS: 2000 W. Jackson St., Painesville, Ohio
CIRCLEVILLE DIVISION: Old Route 23, Circleville, Ohio**

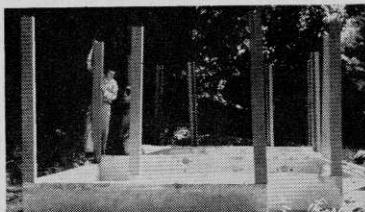
For more information circle number 134 on card

Delivery to Complete Building in

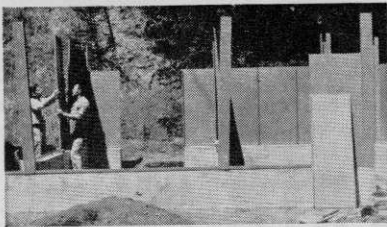
72 HOURS!



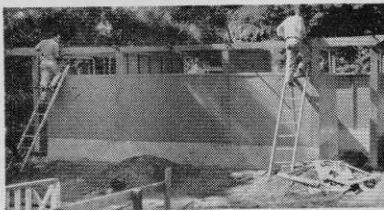
Each part is tagged and coded



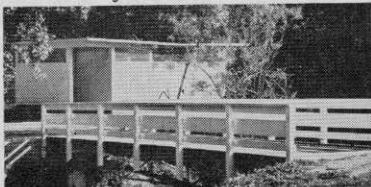
Corner posts being set in position



Coded panels being set in place



Installing main roof beam



Completed and Painted Comfort Station

Vandal Proof!

Unbreakable cast aluminum fixtures, heavy gauge steel construction insure long life, maintenance-free operation!

SUPER SECUR COMFORT STATIONS

778 BURLWAY ROAD • BURLINGAME, CALIF.
For more information circle number 135 on card

EXHIBIT

Continued from page 66

in active performances to put magnetism in your show. We always had superintendents or other people putting on our green (except when it was the stage for the fashion shows). This not only gave the putting golfers the feeling of active participation but got the onlookers sensing the competition and wanting to get into the act themselves.

"We had competition that kept us moving. Across the aisle there was an exhibit of the Mt. Tom ski area at Holyoke, Mass. They drew some of our crowd when they went into their skiing act on a nylon bristle ski slope. They had attractive girls standing around in tight ski pants, and why our own members didn't desert their posts of duty and go over to visit the neighbor girls I never will know. There also was an Austrian ski pro who performed on skis and played a guitar and yodeled, and even I must admit that act entertains more than watching a greens mower. The ski performers were well paid. Our members worked for free.

"I instructed our boys to be on the lookout for attractive women who seemed interested in golf and to invite them to putt for a time. Our fellows cooperated splendidly. So we usually had some fine looking women golfers winning the crowd to our side against the competition of the shapely ski maids.

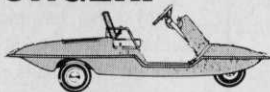
"The fashion show was good but the clothes were not, necessarily, golf clothes. But that show on the stage of our green did get us a goodly share of spectators.

"Many questions were asked by those who halted at the New England exhibit. Some pertained to the background and training required to qualify one as a golf course supt. Several fathers and mothers had tried to enroll their sons in Prof. Troll's Stockbridge classes in turf management but had found no openings. Hence, their sons are going to a community college until they are accepted by the turf school," St. Pierre said.

Governors of the New England states told the Massachusetts Commissioner of Agriculture they regarded the GCSA of New England exhibit the most attractive one on the Avenue of States. They had

Continued on page 70

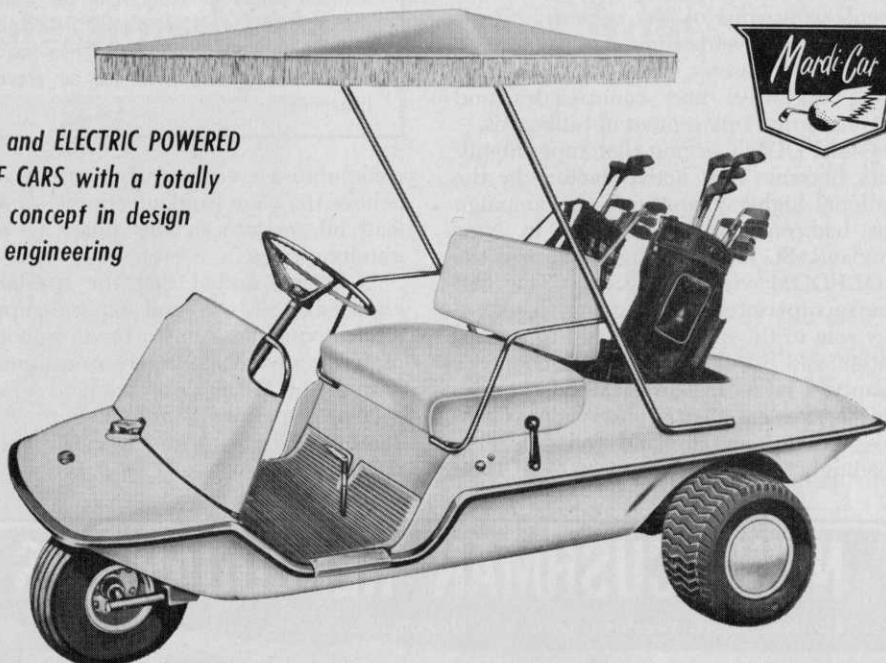
**BUILT BETTER
to last LONGER!**



Mardi-Cars

FOR GOLFERS ON WHEELS WHO DEMAND LUXURIOUS CARE-FREE COMFORT NOW!

*GAS and ELECTRIC POWERED
GOLF CARS with a totally
new concept in design
and engineering*



ONLY *Mardi-Cars* HAVE ALL THESE STANDARD FEATURES:

- ✓ DANA "Fluid Torque Convertor" Trans-Axles
- ✓ No chains or belts—direct drive to Trans-Axle
- ✓ Unitized, Clam-Shell, all steel body
- ✓ Superior power units on gas and electric models
- ✓ Exclusive automotive type hydraulic brakes
- ✓ Independent parking and hill holder brake
- ✓ Single pivot pedal control
- ✓ Wrap-around rubber bumper
- ✓ Luxurious sofa seat and back
- ✓ Largest tires offered as standard equipment
- and many more!

MARDI-CAR, Inc.
21930 Groesbeck Hy., Warren, Mich. 48089

I am interested in the NEW Mardi Cars, please rush brochure and complete details.

Dealership Club Pro Personal Use

NAME _____

ADDRESS _____

CITY _____ STATE _____ ZONE _____

MARDI-CAR, Inc.
21930 Groesbeck Highway, Warren, Michigan 48089

For more information circle number 136 on card

EXHIBIT

Continued from page 68

personal interests in the exhibit on account of the governors' putting contest before the show opened. Each governor was given one of the GCSA hats as a souvenir. That tie-up with the governors was another item in the clever showmanship of the superintendents.

The New England superintendents are keenly conscious of the opportunity afforded them and their colleagues by President Johnson's big push on beautifying highways and countrysides and getting orderly placement of billboards.

GOLFDOM's urging that superintendents become very active factors in the national highway prettying-up campaign has had enthusiastic response in New England. St. Pierre strongly endorses the GOLFDOM view and says, "The golf course superintendent is going to play a key role in this project so vital to preservation and development of the country's beauty. I know five superintendents who are serving on town Conservation Commissions in New England and doing exceedingly valuable work, which their

Lema inks international club, ball contract

Tony Lema has signed an international contract to play British-made Slazenger clubs and golf balls, it was announced recently by Slazengers Ltd.

Signing the contract at London Airport between planes en route from the Ryder Cup matches to Monte Carlo, California-born Champagne Tony asked "How many British ambassadors ever had an accent like mine?"

communities recognize and appreciate. I believe the New England superintendents lead all sections in this phase of community service."

St. Pierre added that the specialized knowledge of the golf course superintendent qualifies him to be an important representative of golf clubs in community betterment. He also observed:

"The superintendent will improve his standing with club members by serving on local committees." •

NEW! CUSHMAN HEADQUARTERS

for Nebraska, Western Iowa, the Dakotas

- New Cushman Golf Cars!
- Rebuilt Cars!
- Used Cars!
- Turf Truckster Utility Vehicles



Fleet Lease and Rental Programs of all Kinds

Call, Write or Wire

JOHNNY BOZARTH, Manager
Cushman Distributor Sales Company

900 North 21st St. • Lincoln, Nebr. 68501 • Tel - (402) 435-2131

For more information circle number 121 on card