



Two ways to wipe out your weed handicap

1. Prevent weeds with Dacthal®. DACTHAL, a pre-emergent herbicide, kills crabgrass and 27 other weeds in fairways, tees and aprons *before* the seeds germinate. Weeds never get the chance to compete with desirable grasses for needed light, moisture and nutrients. One application lasts an entire season. Safe, odorless, non-irritating to eyes or skin when used as directed. In 24-lb. packages as a wettable powder, the easy-to-apply form.

2. Kill Weeds with Dacamine®. If you've already got a crop of weeds cluttering up your fairways, kill 'em off with

DACAMINE post-emergent herbicide. DACAMINE packs the punch of an ester, yet it's safe as an amine. It kills weeds like pulling them by hand. DACAMINE is a concentrate that goes to the roots to kill. No special equipment is needed to spray. In one or five-gallon cans.

Greenskeepers, send for your free copy of *The Monster Meets Its Match*, an informative booklet that describes your weedy enemies and how to get rid of them. Write today. Diamond Chemicals, Diamond Alkali Company, 300 Union Commerce Building, Cleveland, Ohio 44115.



Diamond Chemicals

For more information circle number 238 on card

COUNTRY CLUBS

Continued from page 20

minimum house account system in effect at present — **65.0%**

How many clubs have instituted a minimum house account system during this past year — **17.5%**

How many clubs who had a minimum house account system have given it up last year — **10.0%**

How many clubs operate under the "Congressional Country Club" system — **7.5%**

From those of you who now have a house minimum:

How many have a minimum house account of less than \$10.00 per month — **17.6%**

How many have a minimum house account between \$10-\$20 per month — **32%**

How many have a minimum house account between \$20-\$30 per month — **11%**

How many have a minimum house account of over \$30 per month — **2.9%**

How many plan to review their policy in light of the elimination of the excise tax on dues — **35.3%**

From those of you who do not have house minimum:

How many plan to put one in effect in 1966 — **31.7%**

Plan to review their policy in light of the elimination of the excise tax on these — **68.3%**

How many clubs have adopted in whole or part:

The automatic machine accounting systems similar to IBM wherein the system operates on punched cards — **9.4%**

Considering going to IBM on lease basis or other — **16.0%**

How many clubs operate with the more standard commonly used accounting machinery like Burroughs, National Cash Register, and Remington Rand wherein the machines utilize preset bars for specific duties such as accounts receivable, accounts payable and payroll — **47.2%**

How many clubs still operate by means of hand written bookkeeping procedures — **27.4%**

Regardless of who owns the golf car concession, how many:

Lease their golf cars from manufacturer — **31.4%**

Own their golf cars — **68.8%**

What storage charges are made for member owned cars left on club grounds:

By the season — **39.0%**

By the month — **46.3%**

By the round — **14.6%**

What rent charges are made for golf car usage:

9 holes

Under \$2.50 — **0%**

\$2.50 to \$2.99 — **4.7%**

\$3.00 to \$3.49 — **21.5%**

\$3.50 to \$3.99 — **40.9%**

Over \$4.00 — **32.9%**

18 holes

Under \$5.00 — **0%**

\$5.00 to \$5.49 — **1.9%**

\$5.50 to \$5.99 — **.6%**

\$6.00 to \$6.49 — **26.1%**

Over \$6.50 — **71.4%**

Has your club decided to raise dues to cover:

All of the excise tax reduction — **82.3%**

More than the excise tax reduction — **10.8%**

A portion of the excise tax reduction — **7.0%**

Of those that have raised dues — How has this money been projected in your next year's budget:

Employee Pension Plans — **2.8%**

Hospitalization Plans — **2.4%**

Medical Coverage — **2.8%**

Insurance Plans — **2.4%**

Raises in rate of pay — **19.9%**

Other — **21.1%**

Expansion or remodel — **44.6%**

No specific allocations — **4.0%**

How many of the clubs represented here:

Are presently engaged in a major building program — **46.5%**

Will start a major building program in 1966 — **38.6%**

Will start a major building program in 1967 — **9.4%**

Will start a major building program in 1968 or later — **5.5%**

Frank Johnston golf plant opening in California

Formation of the Frank Johnston Golf Company, headquartering in its new plant in Riverside, Calif., and scheduled to manufacture a complete line of quality woods, irons and putters, was announced by veteran golf pro and club designer Frank Johnson.

Johnson, who heads the new company as president, formerly headed the putter manufacturing division of Golfcraft, and designed all clubs in this category for the past eleven years. He resigned late last year from the Escondido company to establish his own organization.

The new Johnston Company plant, just getting under way with a production line, encompasses 5,000 sq. ft. of space, with all departments under one roof.

Use West Point equipment for one-man maintenance of turf. Save time and manpower with minimum disturbance to the golfer.

One man does it fast. Use the MVG-3 Master Verti-Groove and TCM-3 Catch-Master to Verti-Groove or overseed fairways in one operation. Save time and manpower. Give the golfer more playing time.



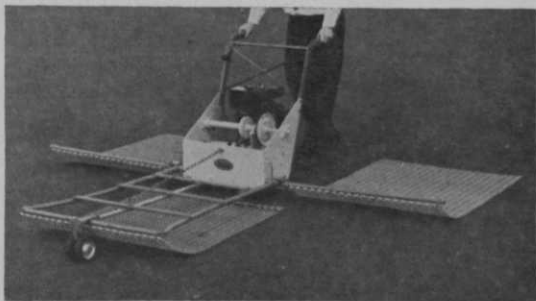
The MVG-3 Master Verti-Groove and TCM-3 Catch-Master. Proven the best fairway renovator of 1965.

One man does it fast. Use the MC-5 Vertifier with new Lifting Device and rubber Flexi-pads to core and clean greens in one operation with no disturbance to the golfer.



The MC-5 Vertifier with Core Catcher, new Lifting Device and tine-mounted rubber Flexi-pads. Proven the best puncher in 1965.

One man does it fast. Use the 3-gang PD-1 Power Drag to reduce green maintenance time. Save manpower. Mat greens three times as fast.



Use the PD-1 Power Drag to save time and manpower. Proven the best labor-saver of 1965.

For information and the name of your West Point distributor write

WEST POINT PRODUCTS CORP.

WEST POINT, PA.

For more information circle number 194 on card

**Maybe you can get
cheaper mowing or
faster mowing. But not
both in one package.**

**International® Cub Lo-Boy®
and Cub Cadet® tractors**

Hand mowers, power mowers and riding mowers all cost less than the smallest mowing tractors. Grazing goats cost even less. But they're all too slow, of course, if you have any sizable expanse of grass to keep neat.

In general, the more power you buy, the more mowing capacity you get. That's just as basic as the fact that the price goes up, too.

Many people with big grass to take care of have found an excellent compromise in a pair of midget workhorses of the International power line.

A quarter of a million of them have bought the 13 hp Cub Lo-Boy, for instance. With 42" rotary mower it



fine-clips up to 10 acres a day. With 60" mower it handles up to 15.

And that's on less than a gallon of gas an hour. The Cub Lo-Boy works with reel mowers, too, of course. Plus dozens of other attachments. It has big model hydraulics and engine-driven power take-off.

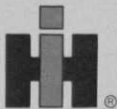
Still more compact—and unmatched for working skin-tight to trees, curbs and other obstacles—are the new 7, 10 and 12 hp International Cub Cadet tractors.

Economy and deluxe models handle rotary mowers up to 48" or 3-gang reels. They have direct, no-belt drive. Enclosed, two-wheel disc brakes. Sports car steering. The same

warranty as bigger IH tractors. A Cadet's no toy. It's a tractor!

How sturdy? Five-year-old Cadets today are still worth up to $\frac{2}{3}$ their original value!

Either or both of these Internationals—Cub Lo-Boy or Cub Cadet—could be the answer to your mowing problems. Look them over at your IH dealer. He'll give you a good deal in pairs or in singles. Or by the dozen.



INTERNATIONAL HARVESTER COMPANY

The people who bring you the machines that work



Growing grass on coral rock

It isn't easy to establish turf in the Bahamas without dirt, but a warm climate and the absence of weed grasses help.

By VERNE FLOYD

Growing grass in the Bahamas may sound like an easy role for the golf course superintendent but the warm climate of these islands is only one requisite for establishing Bermuda grass.

With the rapid increase in golf course construction everywhere, the Grand Bahama and Abaco islands have come in for fine courses, some completed and some underway. Sites for 13 courses have been set aside in the Freeport area which covers some 112,000 acres.

Number one problem on the islands is lack of soil. To grow grass on Coral rock something just has to be added. Since the hardness of the coral varies from island to island, several measures are used preparatory to planting. At Freeport on the Lucayan country club course and the King's Inn Course, material was added from the beaches near-

by. This material, resembling sand less silica (probably mostly ground marine life), was placed to a depth of four inches on fairways, twelve inches on greens and six inches on tees.

At Treasure Cay on Great Abaco Island the coral is comparatively soft and another method of seed bed preparation was used for the golf course. Crawler tractors and grid rollers crushed the top two to four inches of rock, leaving a fair seed bed for fairways.

As one may gather from the accompanying photographs the task of creating a growing medium for golf grasses is not an easy one. However, such a medium has been accomplished, and some of the finest grasses anywhere may be seen at this area.

According to W. A. Roquemore, whose firm planted and maintains the courses

Continued on page 28



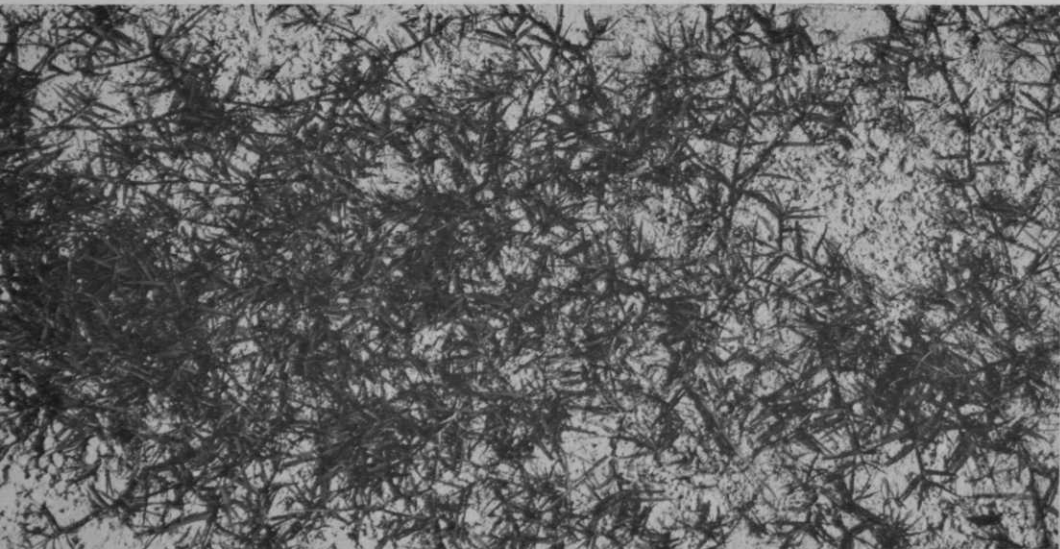
This is the coral rock found on Great Abaco Island. After being crushed by crawler tractors and grid rollers, it leaves a fair seed bed.

Tee planted to Ormond Bermuda stolons, lower right. Seeded area next to tee, lower left. Both plantings made in September, 1965. Background, typical coral after crushing.

Photos by the author



Irrigation water comes from ponds dug out of coral, left, and from numerous shallow wells. Maximum safe depth of wells before water turns too salty runs about 20 ft. Rainfall can be 50 inches per year or as low as eight.



From common Arizona bermuda seed planted in September, 1965, runners spread over fairway of crushed coral, above. This is average stand in early March.

CORAL ROCK

Continued from page 26

at Freeport, the greens are fertilized every 10 days, and fairways every 3 weeks. Greens are never overseeded. Top dressing? Yes, the same material brought from the beaches plus organic fertilizer and possibly a small amount of peat. The addition of lime would, of course, be unnecessary, since the ph runs from 8.2-8.4. Bermuda growing the year round creates a thatch problem on greens to an extent not found on most courses here in the states. Therefore maintenance to control thatch re-

quires considerable effort.

Although Bill Roquemore claims he prefers planting on the worst soils on the mainland to coral on the islands, there are some compensating factors for island maintenance. The islands, without frost, allow Bermuda to keep green and growing. The absence of crab grass and other weed grasses on these areas lessens the job of weed control. Also the rock gives good drainage. So all in all, even though the job approaches hydroponic growing of grasses, the islands have their rewards. •



At right, T-328 Bermuda green at the Lucayan Course. W. A. Roquemore, left, with Golf Course Superintendent Tommy Burton, son of eminent geneticist, Dr. Glenn Burton of Georgia.



Spots in fairway being reseeded and top dressed at Treasure Cay, Bahamas, above. Plenty of native labor available—plenty of problems in training them for course work.

Fall planted tee at Treasure Cay, right, shows worm damage. Sod-web worm leads assault on grass. Parathion often is necessary.



18th hole at Lucayan, left. Ormond Bermuda tee and fairway. This course opened two years ago. Result of traffic from 100 electric cars at right.



Cushman Deluxe Golfster....

Take your choice—the electric or the new Deluxe Gas!

AUTOMATIC SEAT BRAKE

Both models feature the famous Cushman automatic seat brake, which holds the car, even on the steepest hills, when the driver is out of his seat. Both models feature a smooth effortless ride on 9.50 x 8 Terra Tires; both have a fiberglass body made from ten individual body panels, any one of which is easily replaced in the event of body damage. The entire body lifts up for fast

access to all working parts. Both models feature automotive steering (tiller bar steering is also available on the electric only).

"TOE-START" ACCESSORY

The Deluxe Gasoline Golfster can be equipped with the simple new Cushman "Toe-Start" mechanism, which starts the engine at the touch of your foot. When the foot pressure is released, the engine stops automatically. There is no complicated circuitry in the "Toe-Start" mechanism to cause trouble. And, since

Cushman Distributors Now Booking Orders