

Jacobsen



THE VERSATILE TURF KING

The Jacobsen Turf King 76

will do just about anything! Mow up and down grades, side-hill slopes, trim around and in between obstacles, under overhanging shrubbery... mow up to 20 acres of flat-land per day, day-in, day-out. The "King's" three articulated power reels smooth-cut ahead of all wheels. Retractable wings quickly lift for narrow passages, cut at 30° angles up or down. Exclusive variable forward speed and reverse without shifting clutches makes in and out maneuvering a snap. Bed knife adjusts in seconds without tools. Rapid transport between jobs. Rubber rollers available, also. See how much more the versatile, rugged, perfectly-balanced Turf King 76 can do for you. Phone your Jacobsen Turf Equipment Distributor or write today!



Jacobsen Manufacturing Company,

Dept. G-9, Racine, Wisconsin

According to the New England GCSA Newsletter, **Wayne C. Palmer**, an Eastern meteorologist, explains the prolonged drought in the Northeast thusly: "A predominantly dry air mass has locked itself over the Atlantic for four years . . . The Atlantic coast is on the downhill side of the air mass and air coming from the west moves lower as it reaches the East coast . . . This warms it and makes it drier, reducing its rainmaking potential." . . . **Miguel (Joe) Guzman**, who had been at Lakewood (Calif.) GC since its construction days in 1932, retired this summer as supt. . . . Joe helped build the course, was made assistant supt. in 1939 and promoted to the head greenmaster position ten years later . . . His successor is **Stan Kruse** . . . **David L. Bonella**, pro-manager at Ottumwa (Ia.) CC for many years, died a few weeks ago of heart disease . . . He was 64 years old . . . Dave had been Ottumwa's pro for 40 years and in 1939 took on the added duties of club manager . . . Surviving are his wife and two sons, both golf professionals . . . Following the Milwaukee Women's Open, **Kathy Whitworth** was leading the Ladies PGA money winners with a total of \$20,600 . . . This amount gave her a \$6,700 lead over **Carol Mann**, who was in second place . . . **Marlene Hagge** and **Sandra Haynie** had each earned over \$12,000 . . . In 61 rounds, Miss Whitworth had averaged 72.79 strokes per round.

Third annual Fly-in golf championship will be held at the Montauk Golf Links, Montauk Point, L.I., Oct. 6 . . . Last year, 83 golfers from 11 states flew in in 31 planes to take part in the tournament . . . More than 40 entries are listed on the Fall-Winter calendar of events at Pinehurst, N.C. for 1965-66 . . . The first event is scheduled for Sept. 20 . . . The 11th Senior Amateur Championship of the USGA will be played Oct. 4-9 at Fox Chapel GC, Pittsburgh, Pa. . . . Entries are open to male amateurs who reach 55




SWINGING AROUND GOLF

News of the Golf
World in Brief

By **HERB GRAFFIS**

FRONT COVER

Turf at the moment is only struggling to be seen at the new Spyglass Hill course on California's Monterey Peninsula, but already they are saying that nobody is going to take any liberties with this formidable seaside links. The front cover shows the approach to the No. 1 green which hides behind a small lake, a knob of sand and several bunkers. For more about this site, which inspired Robert Louis Stevenson to write "Treasure Island," see Walter Roessing's story on page 24.



Cast Iron Pipe irrigates major tournament courses

*These famous courses use
cast iron pipe to keep their
grounds in top condition*

Desert Inn CC, Las Vegas, Nev.
(Tournament of Champions)

Colonial CC, Ft. Worth, Tex.
(Colonial National)

Colonial CC, Tenn. (Memphis Open)

Highland Park CC, Ohio
(Cleveland Open Inv.)

Columbus CC, Ohio
(PGA Championship)

Tam O'Shanter CC, Niles, Ill.
(Western Open)

Firestone CC, Akron, Ohio
(American Golf Classic)

Oakland Hills CC, Birmingham, Mich.
(Carling World Open)

Pinecrest Lakes, Sebring, Fla.
(Haig & Haig Scotch-Mixed Foursome Inv.)

Pebble Beach, Calif.
(Crosby Nat'l Pro-Am Championships)

Sharpstown CC, Houston
(Houston Classic)



Top tournament courses have to be kept in prime condition all year round. And that takes a permanent, dependable irrigation system that can deliver water under all conditions. That's why so many courses use cast iron pipe.

Extreme temperatures, soil conditions, or pressure surges day after day, don't mean a thing to rugged, maintenance-free cast iron pipe. Joints are as strong as the pipe itself, are leakproof and don't blow out! A full, steady flow of water is always par for the course.

Permanent cast iron pipe goes in to stay . . . up to a century and more. That's why the best pipe—cast iron pipe—is your best buy.



CAST IRON PIPE

THE MARK OF PIPE THAT LASTS OVER 100 YEARS

AN ASSOCIATION OF QUALITY PRODUCERS DEDICATED TO HIGHEST PIPE STANDARDS

Get your free copy of "Golf Course Irrigation." It contains a wealth of information on golf course watering systems. Fill out and mail the coupon today.



CAST IRON PIPE RESEARCH
ASSOCIATION
Wallace T. Miller, Managing Director
3440-G Prudential Plaza
Chicago, Illinois 60601

Send copy of booklet, "Golf Course Irrigation."

Name _____

Position _____

Name of Course _____

Address _____

City _____ State _____ Zip Code _____

by Sept. 21, have handicaps of 10 strokes or less and are members of USGA clubs if residents of the U.S.

Second nine of the Penfield (N. Y.) CC opened a few weeks ago . . . A \$2 million dollar motel-restaurant-shopping complex with a miniature course to be built in Kingsville, O. . . . Manteca (Calif.) municipal GC is under construction . . . A \$166,000 contract for a golf clubhouse at Victor Park in Los Angeles has been awarded by the board of supervisors . . . **Chester C. Kurczab** has been named supt. of the Byron Meadows CC, Batavia, N.Y. . . . the course is in the final stages of construction . . . The 18-hole, 6865-yard, par 72 course was designed by Tyron and Schwartz & Associates and will open next year.

Duffy Martin, pro and owner of the Brookside GC, Oklahoma City, Okla., is building an 18-hole course two miles south of Moore, Okla. . . . He hopes to open the course, designed by **Floyd Farley**, early next spring . . . The course will measure 6300 yards with a par of 70 . . . The Winfield (Ia.) Area Recreation Center has secured its 175th membership and will apply to the FHA for a loan to construct its proposed course and recreation park.

Paul R. Underwood, formerly of El Dorado CC in Sacramento, Calif., has succeeded **Win Howe**, who has accepted another position as pro of the Ukiah (Calif.) municipal course . . . An informal meeting was held recently in Gregory, S. D. to discuss the possibility of a country club . . . Rolling Acres, public Par 3 in York, Pa., has been expanded to 18 holes, reports Owner **Larry Mitzel** . . . The expanded layout now totals, 1,500 yards on 18 acres . . . The Bradford (Pa.) Area GC opened its first nine recently . . . A decision will be reached by September as to whether the Erie, Pa. county park and recreation board will build an 18-hole course on one of its park sites.

The city finance director of Palm Springs, Calif., says interest payments on \$800,000 worth of golf course bonds will amount to more than 50 per cent of their value . . . The interest paid by the city over a 25-year period will be \$426,629 and bring the total cost of purchasing the 156-acre municipal course to \$1,226,629



Tom Cushman (center), pro at the Navy GC in San Diego, didn't have to win a tournament or make a hole-in-one to win an Oldsmobile 4-4-2 last month. He simply countersigned an entry form submitted in a "Golf-O-Rama" contest and when his golfer came through, he won a duplicate prize. He is shown with Harold Tipton, LaMesa, Calif., Olds dealer, and D. L. Klappen, Oldsmobile district manager.

. . . **J. D. (Boots) Lang**, supt., says the first nine at Gulf Shores (Ala.) CC has opened along with the club's new pro shop.

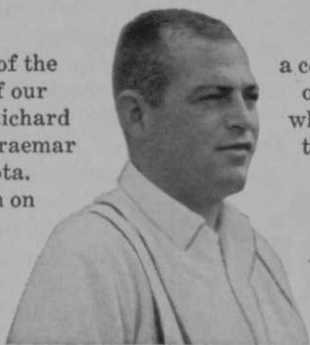
Anslay GC to construct a new million dollar course and clubhouse in northeast Atlanta, Ga. . . . The 18-hole course will be built on about 200 acres and the clubhouse will cost approximately \$400,000 . . . In the meantime, the club will continue to operate from its present location . . . Fridley (Minn.) CC plans to develop a country club and two courses, one a regulation nine and the other a Par 3 nine . . . Initial cost is expected to run around \$400,000 . . . Manager of the new Bethel Island (Calif.) public course is **Bill Krueger** . . . The **Bob Baldock & Son** designed course is 18-holes and was developed by **Ed Connor** from 120 acres of pasture land . . . Supt. at Bethel Island is **Walt Collins**.

Work is underway on a \$575,000 expansion program at Arrowhead CC in San Bernardino, Calif. . . . Improvements include expansion of the clubhouse, swimming pool and parking lot . . . The board of supervisors has approved final plans for development of the 18-hole Marshall Canyon GC at Pamona, Calif. . . . Estimated construction costs are \$800,000.



“I first bought Agrico because of the selection of fertilizers and the clean granules”

“I’m sold on Agrico because of the excellent color and density of our bluegrass fairways,” says Richard Rannells, Superintendent, Braemar Golf Course, Edina, Minnesota. “This ends our second season on an Agrico Feeding Program and it brought our course through the hot summer with no burn and a fine growth rate. Agrico gives



a consistent slow release of nitrogen on both greens and fairways—just what I want.” Start feeding Agrico this Fall. Ask your representative for a complete Agrico Country Club Feeding Program for your golf course. Or write: American Agricultural Chemical Company, New York, New York 10007 or Agricultural Chemicals Ltd., Toronto 15, Ontario.

AGRICO[®] COUNTRY CLUB FERTILIZERS
The Nation's Leading Fertilizer

THERE IS ONLY ONE

PMAS

the original, patented product of W. A. Cleary Corporation. For DUAL control of crabgrass and disease.

MCPP

For weed control on bentgrass greens and fairways; bluegrass and fescues.

SPOTRETE

75% Dry Thiram Fungicide.

CADDY

Liquid Cadmium for Turf Disease.

METHAR

Lightest concentration of DSMA-Disodium Methylarsonate for Crabgrass and Dallisgrass in both liquid and powder.

PM2,4-D

Phenyl mercury-2, 4-d dichlorophenoxyacetate for selective weed control.

ALL-WET

makes water "wetter" for better penetration in all turf areas, especially thatched or compacted spots.

AMA2, 4D

Amine Methylarsonate plus 2, 4-D liquid for Dallisgrass and weed control.

THIMER

A broad spectrum fungicide, containing Thiram and Organic Mercury in wettable form; in pre-measured canisters.

AMA

Amine Methylarsonate, liquid, for Crabgrass and Dallisgrass control.

25% GRANULAR CHLORDANE

Pre-emergence control of Silver Crabgrass, grubs, insects.



New Brunswick, New Jersey

Skokie, Ill.

Belleville, Ont., Canada

Bob Baldock and Son, course architects, who for the past 14 years have operated the Central California Turf Products, a wholesale-retail distributor of turf supplies in Fresno, Calif., have announced the sale of the company to Lloyd Turner who has been manager of the company since its organization . . . Baldock projects underway include an 18-hole layout called Rolling Hill CC, which is to be part of a subdivision in Kennewick, Wash. and Mission Bell CC, which will be part of a development in Lancaster, Calif.

The third annual Jamaica Jamboree tournament will be held Jan. 4-16, 1966 at Montego Bay, Jamaica . . . ABC Television Network has secured exclusive TV rights for three years to the USGA Open . . . Each Open will be televised in color . . . And, as part of the agreement between ABC and the USGA, the network will also televise The Women's USGA Open and the USGA Men's Amateur . . . Special programs on other USGA-activities are also planned.

The USGA Senior Women's Amateur will be played Oct. 13-15 at the Exmoor CC in Highland Park, Ill. . . . Entries are open to women amateurs who will have reached their 50th birthday by Oct. 13 and have handicaps not exceeding 15 strokes under the USGA handicap system . . . Joe B. Williams is architect and in charge of building the first nine holes of Golden Hills GC in Tehacapi, Calif., with plans to expand to a full 18 holes by the spring of 1966 . . . The new nine will cover 3250 yards with a par of 36.

A private, country-club like ski center and year around recreation center including a 9-hole course will be built at Hunt's Hollow near Naples, N.Y. . . . A check for \$261,000, a loan from the FHA, has been presented to the Groton, (N.Y.) Golf & Recreation Assn. for construction of an 18-hole course, clubhouse and other facilities . . . Suffolk (Va.) GC is adding nine holes to complete its 18 at the cost of \$75,000 . . . Architect for the addition, expected ready for play in June 1966, is Russell Breeden. . . A 36-par, 9-hole course has been opened



In only five years this perfect, uniform hedge grew to ten feet from 2 to 3 foot Tallhedge plants 30 inches apart. Never trimmed, except to even up the top at picture time, the hedge maintains a naturally neat appearance.

Now Cole's beautiful new Tallhedge

Rhamnus frangula columnaris. P.P.1388. Luedy

gives you perfect hedges and screens at low cost

NEW BEAUTY. Now, for the first time, Tallhedge, the most beautiful new hedge plant introduced in America in decades, fills a long-standing need for a tall, narrow hedge that always looks freshly trimmed.

DENSE, FAST-GROWING. Tallhedge quickly forms a neat, compact, narrow hedge or screen 12 to 15 feet high, yet can easily be kept as low as 4 feet. Averages 4 feet wide at maturity.

STAYS NEAT. Tallhedge needs practically no care. The hedge illustrated above was never side-trimmed. Note how the dense foliage grows almost from ground level.

VIGOROUS FOLIAGE. Lustrous, heavy, dark green leaves are enhanced by a summer-long succession of attractive berries changing from cream to pink, red and black.

LOW COST. 30-inch spacing is ideal for Tallhedge—takes $\frac{1}{4}$ to $\frac{1}{2}$ as many plants as a privet hedge of equal length at about the same cost per foot. Saves planting cost, too.

EASY MAINTENANCE. Tallhedge is extremely hardy and adaptable—needs no special care. Sides need not be trimmed. Slight shearing at top when young will maintain an even line at any desired height.

Cole's New Tallhedge is the ideal screen for:

Tees and Greens
Practice Greens
Swimming Pools
Tennis Courts
Adjacent Property
Nearby Traffic
Storage Areas


Wholesale orders only
Send for our Catalog

THE COLE NURSERY CO.

Phone Elmwood 2-3121

HEADQUARTERS: 2000 W. Jackson St., Painesville, Ohio

CIRCLEVILLE DIVISION: Old Route 23, Circleville, Ohio



WINTER INJURY and SNOW MOLD

...have one thing in common

THEY ARE MORE SEVERE IN
AREAS OF POOR DRAINAGE

AQUA-GRO

...moves excess water out,
prevents overly wet areas
that encourage snow mold
and winter injury

•
make

AQUA-GRO

*a part of
your fall program*

NOW!

•
AQUATROLS CORPORATION of AMERICA
217 ATLANTIC AVE., CAMDEN, N. J. 08104



recently at Washburn, Ill. by Mr. and Mrs. Maynard Christ.

A new clubhouse for the municipal course of the city of Manteca, Calif. has been proposed and architect's drawings prepared . . . The Clubhouse will contain showers for men and women, lockers, a snack bar and pro shop. A driving range and parking for 70 cars will be part of the clubhouse area . . . Garden Grove, Calif. will be the site of a 9-hole Par 3 course within a 28-acre development, Rancho Valencia . . . William Bell is architect.

Bloomington, Ill. planning officials are seeking to combine Lakeside CC, Holiday Club and adjacent land into Southeast Park, relocating the present golf course elsewhere . . . A 9-hole course is being built on the base at Otis Air Force Base in Mass. . . . Labor Day saw the opening of the Jackson Hole (Wyo.) G & CC, designed by Bob Baldock . . . Another Baldock and Son course was put into construction on Sept. 1 in Cucamonga, Calif. . . . It will be an 18-hole public layout.

Roy H. LeBus and Sons Inc. has started work on 3410 acres of its 25,000-acre Monte Verde Ranch, about 23 miles east of Taos, N.M. . . . One area will have a ski slope and lodge, another will be homesites surrounding the Monte Verde CC, boasting a 9-hole course under construction and designed by LeBus himself, and a summer homes area.

Land has been purchased for development of the Gowrie (Ia.) CC . . . Arnold Palmer Enterprises is building an 18-hole putting course in Tokyo, as part of what is anticipated to be a complete Nipponese chain, according to Frank Abramoff, senior v-p . . . The Newton (Ia.) CC has undergone an extensive \$100,000 remodeling, which includes an addition to the lounge and a new pro shop . . . Oak Park GC in Horsham township, near Philadelphia, Pa. has been sold to a group of investors said to include a number of current and former major league baseball stars . . . The course will be called Limekiln CC and the new owners are said to be prepared to spend \$150,000 to improve the course and facilities.