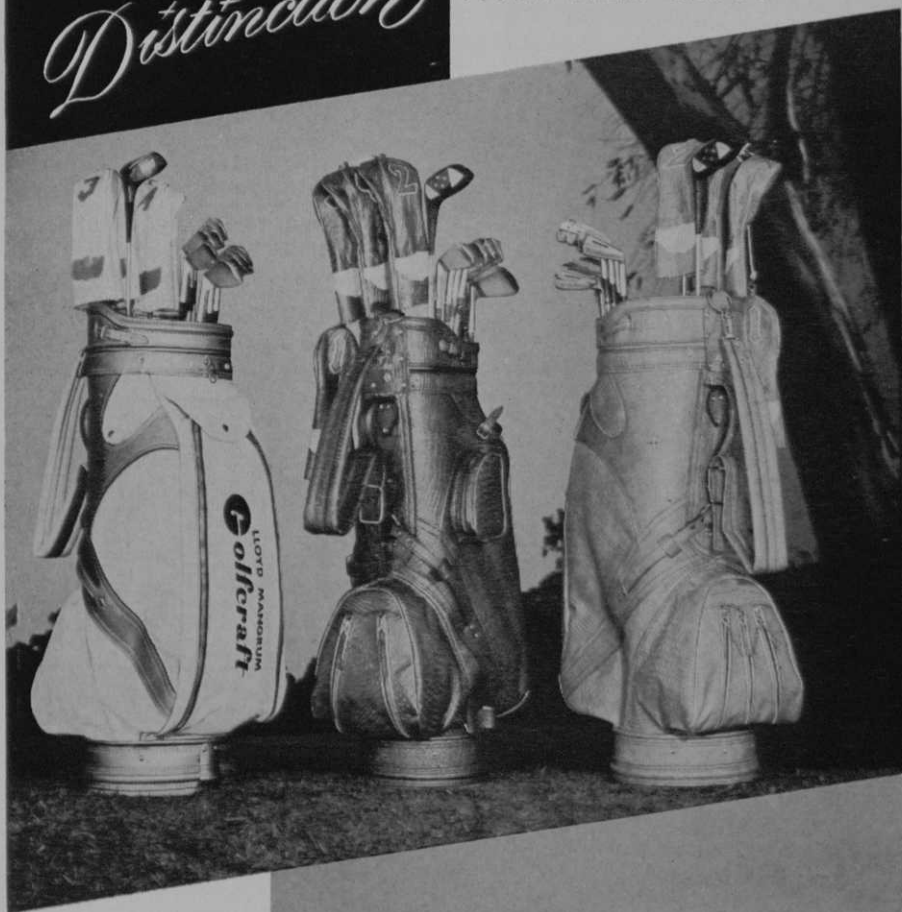


Distinction

... IN EVERY DETAIL

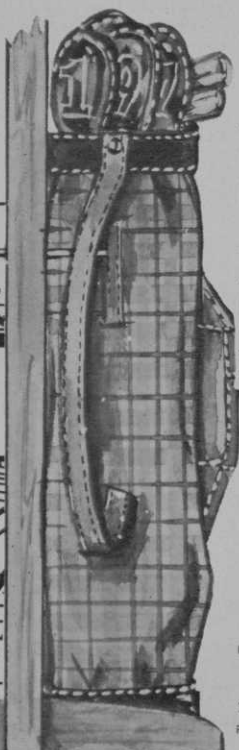
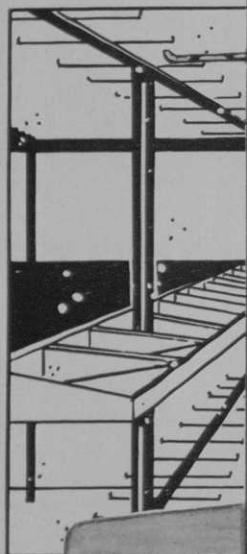


Golfcraft

... for the finest golf bags that assure proud possession for a lifetime. Exquisitely detailed in advanced styling as illustrated here (from left to right) are the Staff model in glovsoft llama; the Lady Presentation and men's Touring Pro bags, both in the all-new crockatasia kangaroo. Visit your pro shop and see the distinguished selection of Golfcraft bags that are styled in a price range to fit you.

ESCONDIDO, CALIFORNIA
CHICAGO, ILLINOIS
TRENTON, NEW JERSEY
VANCOUVER, CANADA

NEW BAG RACKS



INCREASE EARNINGS AND SAVE SPACE

*Service is in sight
with vertical bag racks*

Your club members will appreciate the extra convenience and service that only Stafford Vertical Bag Racks can offer. And, like pro shops across the nation, you can profit from the 40% additional space (compared to other storage systems) this rack makes available. Additional benefits are:

- Wear and tear of golf bags is completely eliminated
- Damp bags dry faster—no mildew
- Faster, easier storage
- Provides a neat appearance
- Easy to install

PLAN TODAY TO CONTACT

THE A. G. STAFFORD CO.

2006 Allen Ave S. E. • P. O. Box 287 • Canton, Ohio
PATENTED Phone 453-8431

May at Chester, N. J. . . . Operators are **Frank and Jerry Grogan** . . . Lincoln Park, N. J.'s Two Bridges CC will be a lighted 18 when ready for play in late June . . . Developer is **Edward P. Shinman** and pro for the 4,000-yard, par 60 course is **Bill Mehlhorn**.

The big three of modern golf, **Jack Nicklaus, Arnold Palmer and Gary Player**, were installed as members of the Hill of Fame at Oak Hill CC, Pittsford, N. Y., on June 7 . . . The Hill is located on the club's East Course, and is crowned by a group of young oak trees, each dedicated to an outstanding contributor to the game . . . Among those honored are **Robert T. Jones, Walter Hagen, Francis Ouimet, and Babe Didrikson Zaharias**.

The Lonely Pine Grill & CC near Siloam, N.C. should have the opening of its 9-hole course in late summer, according to **Kirby Bowman**, owner and developer . . . The Robersonville (N.C.) Recreational Club has been granted a \$129,750 FHA loan to purchase land

for a clubhouse and nine-hole course . . . Montgomery, N.J.'s Bedens Brook CC has begun construction on its new clubhouse . . . **Geoffrey Cornish** will design an 18-hole course at Bridgewater, Conn. that is being developed by **Paul Lehtola** . . . **Edward Monks**, formerly at Grassy Hill Club in Orange, Conn., is now pro at Tamarack CC in Greenwich, Conn.

Ives Hill CC in Watertown, N.Y. will change two holes in Sept. in order to protect both motorists and golfers . . . Golfers must now drive across a roadway that bisects the course . . . Rearrangement of two holes will solve this problem . . . **Robert (Bob) Finn** is new pro at Marion CC in Stockton, Calif. . . . Finn replaced **George Splane**, who resigned . . . Countryside CC, Libertyville, Ill., is undergoing extensive remodeling . . . Plans call for enlargement and rebuilding of the 18-hole course . . . The new management of the club includes the owner, **Mrs. Paul Pettengill, Fred Stice, pro, and Betty Wells**.



**NATURALLY!
GOLF BALLS
ARE
BETTER
WHEN
COVERED
WITH**

**[NATURAL
BALATA]**

You can't see the natural balata in golf balls, but it's there! You can feel it when you take a solid swing. You can hear it in the sweet-sounding "click" when ball and club meet. You can rely on its toughness and resistance to abrasion.

For over 40 years, we've been supplying golf ball manufacturers with this refined and processed rubber-like material. It's competitively priced, steadily available and meets all requirements. Next time you buy golf balls, ask if they're covered with natural balata.



HERMANN WEBER & CO., INC.

76 BEAVER STREET - NEW YORK, N. Y. 10005

Telephone: WHitehall 4-5937

FREE BOOKLET

Tells golfers all there is to know about natural balata. Send for a supply today.



"Gary Player, you've been using Shakespeare Fiberglas WonderShafts for almost a full season now. What do you think of them?"

"I've switched to them entirely, as have several of the pros. Bruce Devlin, for example, is also hitting WonderShafts. I like them very much indeed, and not just because I won over \$60,000 with them. I

think they will improve golf." **"Why is that, Gary?"**

"They have a completely different feel. I think you can stay with the ball longer with Fiberglas, which is very important. The longer you stay with the ball, the better you hit it and the better you maneuver it. By that I mean you have better control over more kinds of shots

—low hook, high hook—that sort of thing. And I think this is due primarily to this different feel that Fiberglas has." **"Besides controlling the ball**



better, does Fiberglas allow you to hit the ball any differently?"

"Very definitely, particularly iron shots. I'm able to hit the ball higher and get backspin on it. And height is very important. In fact, this is a fault with most weekend golfers—they don't hit their iron shots high enough. Hit iron shots high with backspin, and the ball will hit the green and stop; whereas low shots bounce and

run all over. Again, I think this extra loft is due to the fact that you stay with the ball longer with Fiberglas shafts." **"What about putting, Gary? Have Fiberglas shafts helped you in this area?"** "Again, I think it's a matter of feeling that you have more control over the ball. Fiberglas makes you feel more confident—at least it does me. And confidence is a large part of putting. And, of course, 50% of the game of golf is made up of



putting. Incidentally, this same feeling of control also applies to Shakespeare's XLD ball, which has a Fiberglas center. It's a great ball. It makes you feel good when you use it." **"Are Fiberglas shafts easier to maintain than steel shafts?"**

"Of course, there's no rust with Fiberglas. Also, there's no glare from the sun. They never lose their flex, either. If you buy Fiberglas shafts today, they're going to be the same exact shafts five years from now. Also, because of the cushiony feel of Fiberglas, there's never any recoil shock in your hands—even if you hit the ball on the head or toe of the club. It has a wonderful feel." **"Should golfers keep anything in mind when they buy Fiberglas shafts?"** "Just one point. I've found that if you use the wrong flex, you won't like them. Don't use too stiff a shaft. Experiment. The right flex can go a long way toward compensating for any lack of strength or practice that a golfer might have. Of course, the Shakespeare Company is constantly experimenting with shaft flex. They make Fiberglas shafts that are right for just about any golfer."

How about you? Have you put the new power and feel of Fiberglas* into your game? Fiberglas bonds





more than half a million glass fibers to generate a progressive build-up of power from hands to club head that no other shaft can match. You'll find Fiberglas WonderShafts® on all Shakespeare Power-Mated clubs. Sold exclusively through pro shops. Bruce Devlin uses WonderShafts, too, and more and more other pros are switching. Why should you? You know.



Try Shakespeare Power-Mated clubs with Fiberglas WonderShafts. Go ahead. See if you don't agree with Gary and Bruce.

*Registered trademark of Owens-Corning Fiberglas Corp.

Shakespeare Company, Golf Division, Dept. 65GF00, Kalamazoo, Mich.
Please send me full information on patented Power-Mated woods and irons with the Fiberglas WonderShaft and XLD Fiberglas center balls.

NAME _____ TITLE _____
CLUB _____
ADDRESS _____
CITY _____ STATE _____ ZIP _____

Shakespeare
Only your pro can help you more

No
Tangle of
Clubs and Bags

RAC-ME*

Proven
For Best
Layout

GOLF BAG STORAGE RACKS



- No extras to buy
- Heavy duty construction
- Removable — expandable
- Neat, compact, space-saving
- Saves time—earns rental
- Mail or phone. Give us your room dimensions for prompt layout, suggestions and quotations.

Designed and
Manufactured
By

ACME

Iron Works, Inc.

1240 Mount Olivet Road, N.E.
Washington, D. C. 20002
Since 1933

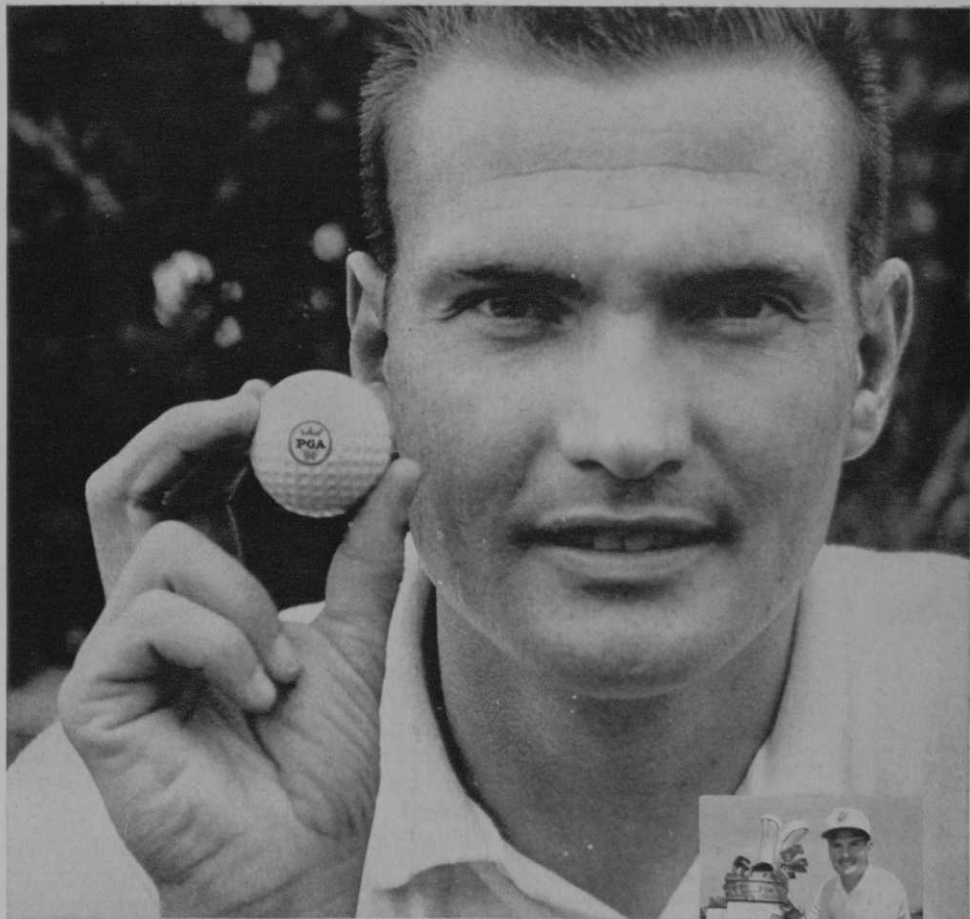
(202)-526-1240 *Trade Mark

Plans are drawn for the Sussex CC and 18-hole course to be located near Stockly, Del. . . . The board of directors of the Deer Park GC is studying a general plan for an 18-hole course, new clubhouse and a swimming pool . . . The Villa Vaqueros club and course to be built on the Salt River Indian Reservation near Scottsdale, Ariz. . . . **Don Haftman** is new pro at the Spring Valley GC in Elyria, O. . . . Opening of a 9-hole course at the Cowanesque Valley Recreation installation near Westfield, Pa., scheduled for July . . . Prominent Providence, R.I. attorney left a bequest of \$1000, from his estate estimated at \$150,000, to the Sakonnet GC in Little Compton, R.I. . . . The Saranac Inn (N.Y.) CC has a new clubhouse building that was opened June 1.

Noel, Mo. will be the site of a new 9-hole course . . . The state of New York has approved plans for purchase of land for building a 9-hole course in North Tonawanda, N.Y. . . . Moose Lake (Minn.) GC stockholders have voted to

install a new water system . . . New facilities made available for golfers at Butler's public course in Elizabeth township, Pa. . . . Ten new holes were added to the course, six of them part of the new 9-hole layout and the other four in the 18-hole course . . . Butler's also has a new clubhouse that has a pro shop, restaurant and bar, showers and locker rooms . . . Last year Pro **Tom Jackson** operated out of a trailer and was happy to move into new quarters.

Geneva-on-the-Lake, near Lake Erie and Ashtabula, O. will have an 18-hole course when its recreation center is opened on Memorial Day in 1966 . . . The L-shaped course is unique in that each hole is completely surrounded by wooded areas . . . A new nine is to be added to the existing nine at the Greenville (O.) CC . . . The new nine will stretch 3300 yards with a par of 35 . . . Clermont (Ind.) Par 3 GC is open and construction of a miniature course and the addition of lights for both are underway . . . **John H. Macy** is the pro . . . Cen-



“Two aces! and an eagle...
in the first tournament I played
the PGA BALL!” says *Jack Rule*



“Some players would call it luck! But I don't. In all my golf experience, I've never played a ball that performs so consistently. The pros and amateurs I've talked to agree that the PGA Ball is the greatest. It comes in three compressions, 100, 90 and 80 . . . so just choose the one that's right for your game. Then watch that game *improve*. Luck? A miracle? Not on your life! It's the finest ball I've ever played . . . the *only* ball approved by the Professional Golfers' Association.” SOLD ONLY THROUGH GOLF PROFESSIONALS.



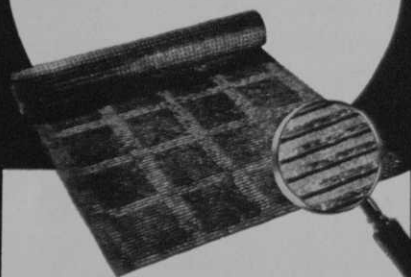
PGA GOLF EQUIPMENT a division of  VICTOR GOLF CO.

8350 N. Lehigh Ave., Morton Grove, Ill. 60053 • Tel. 966-6300 (Area Code 312) products of Victor Comptometer Corporation

SHADOW TONE

Spike-Resistant MATTING

for **GOLF
CART FLOORS**



Made of tough nylon synthetic fibers, rubber and additives to afford unequalled resistance to wear, scoring, denting and puncturing. Slip-resistant, wet or dry. Easy to clean. Unharmful by sunlight or extremely high or low temperatures. Grease-resistant. Attractive "two-tone" appearance. Comes in rolls for easy cutting to desired size or in sizes cut to your specifications.

NYRACORD SMOOTH MATTING

is also ideal for golf carts, being spike-proof, tear proof, nearly indestructible.

Write for literature and prices.

AMERICAN MAT Corporation

587 Park Avenue Wapakoneta, Ohio
Phone: (419) 738-2158

"America's Largest Specialists in Floor Matting"

tral Valley CC in Newburgh, N.Y. has a new putting green located in front of the clubhouse according to pro William Carter . . . Jasper (Ind.) CC's new clubhouse is nearing completion and will be officially opened sometime this summer . . . Franklin Lakes, N.J., will have a second course if approval is given to developer, Arthur J. Bloomer, who plans to build on a 100 acre site.

Hank Wilms, pro for the Cincinnati (O.) recreation commission has been appointed pro-manager of the new Hilmar E. J. Neumann memorial GC . . . As previously reported, George Russell is the new supt. at the Cincinnati municipal course . . . The 9-hole course attached to the Holiday Valley ski resort in Elliptonville, N.Y. should be ready for play by late summer, according to Robert B. Stubbs, president.

Ken Still finished with a 287 in the Houston Classic, but his ace on the 17th hole won him a Barracuda sports car . . . The ace was the second in the career of the Tacoma, Wash. pro . . . His first hole-in-one came when he was a high school student in 1953 . . . Zora, O. is the site of the new Charmita, 2000-acre recreation development, that will have a new clubhouse for its 18-hole course.

Two local men have acquired the Villa Maria Hotel in Glastonbury, Conn. . . . They plan to turn it into a public restaurant and semi-private course . . . Approval by the town plan and zoning commission is the only approval needed for development of the 180-acre plot . . . William Byrd and Assoc. will design the 18-hole course to be built in Litchfield Beach, S.C., along the inland waterway.

Plans call for the Murray, Utah municipal course to open this fall . . . The new 9-hole facility is a Par 3 course and will be equipped with lighting for night play . . . Wabasha, Minn. golf course promoters have received a loan for \$88,000 from the SBA . . . Englewood (Fla.) Public Par 4 GC will be open in Nov., according to owner-developer F. Riker Clark . . . Work is progressing on the Williamsburg G&CC, under construction in Clio, Ky.

Do you make any money when your course looks like this?

Probably not, unless you have an oil well in the rough. At night an *unlighted* course is an *unused* course that isn't providing any return on the investment in it.

Here's where Wide-Lite* golf lighting makes the difference. When darkness comes, just switch on your "Wide-Lite" floodlights, and your patrons can keep right on playing — instead of going home. They can tee off after dark, and play a round *any* night of the week. This means you make more money from greens fees, cart rentals, food and bar service and pro shop sales. It also relieves congestion at the tees on weekends.

Why is the "Wide-Lite" floodlight best for golf lighting? It has a rugged, cast aluminum body to shrug off stray balls . . . a tempered glass lens to give the same protection . . . a choice of reflectors for

smooth coverage of the widest fairways, the highest drives, the longest putts.

No need to be in the dark about golf lighting. We'll send you information about how "Wide-Lite" floodlights can help keep your course a money maker after the sun goes down. Just send the coupon.

WIDE-LITE CORPORATION Dept. 24A-144
4114 Gulf Freeway, Houston, Texas
Send more golf lighting information. No obligation,
of course.

NAME _____

CLUB/COURSE _____

ADDRESS _____


CITY _____ STATE _____ ZIP _____

ELECTRICAL CONTRACTOR _____

FLOODLIGHTS • BALLASTS • POLES • INDOOR LUMINAIRES

Wide-Lite Corporation, A Division of Esquire, Inc., 4114 Gulf Freeway, Houston, Texas. In Canada: Wide-Lite Division, Wakefield Lighting Limited, London, Ontario — In Europe: Van Oostenryck, S. A., 9, rue de Formanoir, Bruxelles 7 (Belgium) — In Mexico: Inter-Lux, S. A., Apartado Postal No. 1586, Monterrey, N.L., Mexico

*Trademark of Wide-Lite Corporation

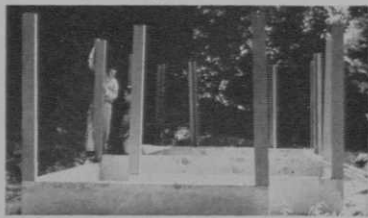


WIDE-LITE

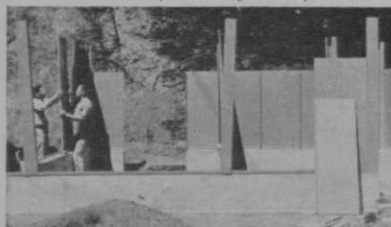
Delivery to Complete Building in **72 HOURS!**



Each part is tagged and coded



Corner posts being set in position



Coded panels being set in place



Installing main roof beam



Completed and Painted Comfort Station

Vandal Proof!

Unbreakable cast aluminum fixtures, heavy gauge steel construction insure long life, maintenance-free operation!

SUPER SECUR COMFORT STATIONS
778 BURLWAY ROAD • BURLINGAME, CALIF.

Pro Ray Catan has announced the opening of nine holes at Shorecliff CC, San Clemente, Calif. . . . the 18-hole 6,151-yard, 72-par course is operating as a semi-private club until the membership quota is filled . . . Mill River Club, Upper Brookville, L. I., N. Y., is spearheading a unique drive to get private country club support behind the cultural activities of the Long Island Arts Center . . . Mill River members will serve on a committee to seek out other country club members who will carry word of the center and its festival to their respective memberships.

First annual Greater Miami (Fla.) Clergyman's Tournament was held May 26 at LeJune GC . . . Whispering Palms G & CC has opened at Rancho Sante Fe, Calif., as part of a residential-recreational complex . . . The club has one 18-hole course of 6,500 yards with a par of 72, one 2,912-yard regulation course of nine holes with par of 35 and an 18-hole course of 2,740 yards with par of 54 . . . Harry and David Rainville designed the courses . . . Don McFarlin is pro.

Highland Crest CC clubhouse near Elgin, Ill., was destroyed by fire . . . Estimated loss was \$200,000 . . . Highland Crest, now operated by Walter Wallace, formerly was known as Villa Olivia . . . The night before the fire of May 15, the Highland Crest pro shop was robbed . . . Warren Cantrell, PGA president, goes with Burke interests, developers of Pecan Valley 3,500 acres at San Antonio, Tex. . . . Cantrell is president, Pecan Valley CC and vp, Pecan Valley Properties, the organization headed by E. J. Burke, Jr.

A. B. Justice, former Oklahoma A&M golfer, goes from Okmulgee (Okla.) CC to pro job at Rolling Hills CC, Wichita, Kan., succeeding Gene O'Brien who has left pro golf to work for Lear Jet Corp., aviation equipment manufacturers . . . J. T. Burns succeeds Justice at Okmulgee . . . De Soto Lakes GC and Lodge, Sarasota, Fla., has been sold to a corporation headed by David Baird, New York broker . . . Reported price was \$1,600,000 . . . Michael Freedman, developer of De Soto Lakes, retains a financial interest.

(Continued on page 82)