

FORD LCG TRACTORS

New balance of ground-hugging power
for economical mowing...towing!

Smooth! Sturdy! Economical!
All-new, all-tractor engines


It's a short, easy step into a new era of mowing performance when you step aboard a New-Size Ford Low-Center-of-Gravity tractor. Low-slung and built for mowing, these all-new outfits from Ford give you new steep-slope stability . . . new strength, new durability!

All-new, all-tractor engines deliver power with a smoothness entirely new to mowing tractor operation. You'll find extra strength in the block, in every working part . . . plus new fuel saving efficiency.

Two New-Size Ford LCG tractors match your power needs: the economical Ford 2110 LCG and the more powerful Ford 4110 LCG. Both

units tread lightly, due to exceptionally well-balanced weight distribution and high flotation tires. The big-capacity Ford 4110 LCG treads softly over tender turf, yet provides ample power for uphill work with big-gang reels or wide, multiple-section rotary cutters. Power-shift transmission lets you shift-on-the-go, to any of 10 forward speeds, matching load and travel conditions.

See your Ford tractor dealer,
test-drive a New-Size LCG soon!

TRACTORS
PRODUCTS OF 
EQUIPMENT

FORD



RIDE WALT DISNEY'S MAGIC SKYWAY AT THE FORD MOTOR COMPANY PAVILION, NEW YORK WORLD'S FAIR



**50 lb.
BAG
EASIER
TO
HANDLE**

for
TOUGHER TURF
fertilize with
MILORGANITE

The NATURAL ORGANIC FERTILIZER

- LESS DISEASE
- LESS NEMATODE INJURY
- REDUCES WILT

Long lasting Milorganite provides soil with everything necessary for strong, vigorous grass growth. It promotes a healthy root system that resists drought, insect pests and disease. Milorganite is easy to apply, too: It's dust free, free flowing, and does not cake or deteriorate in storage. Use Spring, Summer and Fall.

If you have a Turf Problem, consult
Turf Service Bureau

THE SEWERAGE COMMISSION
MILWAUKEE 1, WISCONSIN

MILORGANITE
The NATURAL ORGANIC FERTILIZER

first 18 of three proposed courses at River Plantation subdivision, 35 minutes from downtown Houston, Tex. . . . Work is underway on the Natchez Trace GC in Tupelo, Miss. . . . **John Frazer**, Memphis, Tenn., is architect and is supervising the course construction . . . Up to 23 per cent of the general student fees paid by undergraduates at the State University in Buffalo, N. Y. is going directly into the treasury of the private Faculty-Student Association, Inc. to defray the costs of land acquisition and development of a standard course at the school . . . A tract of land in the town of Amherst, is the probable site of the course.

The Florence G & CC, Sheffield, Ala., has added nine holes to bring the course to 18 . . . **J. Henry Amt** has an option to buy land located in the city of Elkhart, Ind., for which special permission has been granted to develop as a course . . . Uniontown (Pa.) CC, has **Warren D. McIntosh** as new manager . . . McIntosh was formerly at Youghiogheny CC.

Avoca, Iowa's Green Hills Recreation Center is conducting an intensive membership drive in order to secure an FHA loan to build a course, clubhouse and recreational center . . . The new 9-hole Lake Woods GC, located along the waters of Lake Rufus Woods, the reservoir behind Chief Joseph Dam in Washington state, is now open . . . The course is built on land leased from the state by the local community . . . Wyoming, Mich.'s I. E. Kaufman public course was opened recently.

Two Bridges CC (Newark, N. J. area) will be the first illuminated semi-standard length course opened in the metropolitan area, it is claimed . . . Located in Lincoln Park, the 18-hole, 4000-yard, par-60 course will have **Bill Melhorn** as pro . . . The Beaver Meadows Golf and Recreation Assn. of Phoenix, N. Y. has received a Federal loan of \$225,000 to develop its 9-hole course, clubhouse, pool and other facilities, to be known as the Beaver Meadows Club . . . The Utica, N. Y. firm of **Russell D. Bailey Assoc.** has been retained to prepare the design of the course.

X. G. Hassenplug is designer of Valley Green G & CC, near Greensburg, Pa.,



“I never worry about an installation when we use Certain-teed Asbestos-Cement Pipe!”

Lee Freeman is a construction superintendent who specializes in golf course irrigation systems, and has used various kinds of pipe in courses throughout the country and in the Caribbean. “Certain-teed pipe is easy to work with and absolutely dependable. I’ve used it in the Catskills, in 35-below-zero weather, and in the Deep South, with 100-degree heat. Under all

conditions, including swamps — rocks—clay, Certain-teed pipe outperforms any other kind.”

For the irrigation system your course needs, choose economical, trouble-free Certain-teed Asbestos-Cement Pipe, now factory-equipped with the new CERTA-SPACER™ pipe-positioning band for fast, sure assembly at every joint.



Certain-teed Products Corporation
PIPE DIVISION · LEA BUILDING, AMBLER, PA.



may we spray through?

John Bean has a sprayer to fit your course

From tee to green, your course benefits from a John Bean sprayer. Take the high-pressure, boom-type sprayer shown. Fairway weed, brush and mosquito control. Liquid fertilizing. Tree spraying. High-pressure outlet for hose-and-gun green and "spot" spraying. Dust abatement. Stand-by fire protection. Even leaf and brush burning. Select from the most complete line of hydraulic and air-type sprayers, booms and accessories. Just ask the "sprayer people" . . .

Write for free sprayer catalog.
Mosquito Control Data Kit
also sent upon request.



JOHN BEAN DIVISION

Lansing, Mich. - Orlando, Fla. - San Jose, Calif.

which opened recently, according to manager **Don C. Morgan** . . . The first nine holes are in play and the second nine will be ready in 1966 . . . Memorial Day saw the opening of the Dows (Ia.) CC, which was built almost entirely with volunteer labor . . . The old farmhouse is the clubhouse and the former beehouse is to be the pro shop with storage facilities . . . The course was designed with the guidance of Prof. **Arthur E. Cott** of Iowa State Univ.

Foodergang Lodge course opened this spring by the owners and developers **Richard** and **Raymond Dommel** . . . The course is a 9-hole Par 3 located between Ephrata and Akron, O. . . . Future plans call for an expansion to 18 holes . . . A contract has been let for construction of the Glen Cannon CC in Brevard, N. C. . . . It was designed by **William B. Lewis, Jr.** . . . The 18-hole, par-72, 6519-yard course is surrounded by homesites . . . Pro **Newell Baker** reports that the 9-hole course at Coharie CC, Clinton, N. C., is being expanded to 18 with play expected on the full course by next year.

Clear Lakes CC, Clear Lake, Tex., has **Jerry Smith** as pro. His wife, **Evelyn**, is assistant manager . . . Manager is **Waymon Armstrong** . . . Owner **Guy Ledgerwood** of the new Brookside CC Kingsley, Ia., has announced that the course opened recently . . . **Leo Johnson** designed the layout . . . Twin Oaks CC on the Saginaw-Bay County (Mich.) line opened its 5745-yard, 18-hole, par-71 course recently . . . Owners are **Johnny Sieggreen**, **Leo Makolaiczik** and **Dick Maurer**.

Pro **Wayne Webster** of Lindale GC, Sacramento, Calif., has appointed **Vickie Brewer** assistant manager of the pro shop . . . **Vickie** will assist **Webster** in organizing a women's club and a Junior club . . . Winged Foot GC, Mamaroneck, N. Y., was the scene of a fire that destroyed the employees quarters . . . Lincolnshire Fields CC, southwest of Champaign, Ill., opened recently under the direction of pro-manager **Howard (Howie) Braun** University of Ill. tennis and assistant basketball coach.

KEEP GREENS, FAIRWAYS
in Championship Form

with

PMAS

REMEMBER *There is only ONE*

the original, patented product
of W. A. CLEARY CORPORATION

Apply PMAS early for dual control of BOTH disease and Crabgrass. PMAS has stood the test of time . . . the genuine PMAS has demonstrated its worth, over the years, to the golf course superintendent and is now an established control chemical for BOTH disease and Crabgrass on courses in all parts of the country. Be safe, be sure . . . if PMAS does not appear on the label it is not the genuine PMAS, patented and manufactured by W. A. Cleary Corporation.



M C P P

For weed control on bentgrass greens and fairways; bluegrass and fescues.

SPOTRETE

75% Dry Thiram Fungicide

CADDY

Liquid Cadmium for Turf Disease

METHAR

Lightest concentration of DSMA-Disodium Methylarsonate for Crabgrass and Dallisgrass in both liquid and powder.

PM2,4-D

Phenyl mercury-2, 4-d dichlorophenoxy-acetate for selective weed control.

ALL-WET

makes water "wetter" for better penetration in all turf areas, especially thatched or compacted spots.

AMA2, 4D

Amine Methylarsonate plus 2, 4-D liquid for Dallisgrass and weed control.

THIMER

A broad spectrum fungicide, containing Thiram and Organic Mercury in wettable form; in pre-measured cannisters.

AMA

Amine Methylarsonate, liquid for Crabgrass and Dallisgrass control.

25% GRANULAR CHLORDANE

Pre-emergence control of Silver Crabgrass, grubs, insects.

**W. A.
CLEARY**
CORPORATION

New Brunswick, New Jersey
Skokie, Ill. Belleville, Ont., Canada



Write now for facts and figures on a sprinkler system for your course

Get the complete details that have meant big savings in time and money for courses all over the country. Just drop us a line. We'll then write you for a few facts about your course. From these, we'll prepare a sprinkler system layout — including suggested operating instructions and supplemental equipment. You'll also get a complete bill of materials. Obtain installation figures from a local contractor and you'll have the exact cost of your sprinkler system.

CRESline systems are fast and easy to install, low in initial cost and completely dependable. Guaranteed right in writing. For proof of superiority, contact any of the hundreds of CRESline system users (names on request).

CresLINE[®]
SPRINKLER SYSTEMS

CRESCENT PLASTICS, INC.

Dept. G-765, 955 Diamond Ave.
 Evansville, Indiana 47717

MEMBER NATIONAL GOLF FOUNDATION

Don Siebern, owner, says his new Fair-acres GC, between Gosehn and Mt. Repose, O., opened recently . . . The links is a par-70 6221-yard, 18-hole layout . . . A big barn on the location is being remodeled into a clubhouse, including a pro shop . . . Bradford (Pa.) Area Golf Association course opened in June . . . **George Rich** of Moodyville, Tenn. is building a 9-hole course southeast of Byrdstown, Tenn. . . . Evans Heights is the name given to a new course being built near Claxton, Ga. . . . **Ray LaCombe** is pro at the Grand Hotel course, Mackinac Island, Mich. as well as manager of the Grand Hotel Golf Club.

A group of local sportsmen are pooling their efforts to establish a course in Augusta-McCrory, Ark. area . . . Tanforan GC in San Bruno, Calif. slated to be replaced by an apartment-shopping plaza complex . . . However, the planning commission has recently turned down a proposal for the complex and this leaves the course still operating . . . According to pro **Tom McHugh** there have been a great many complaints about the city losing Tanforan.

The St. Croix Falls (Wis.) GC opened recently after being rebuilt and reconditioned . . . The major improvement was the addition of grass greens . . . Peach Island, at the head of the Detroit River, is being developed by Detroit financier **E. L. Harris** into marina and an 18-hole lighted Par 3 course . . . Harris plans to enlarge the island by dredging and filling and then developing a complete recreational complex with many historical exhibits . . . Second nine recently opened at the Rockland (Me.) municipal course, according to **Roger Sorrent**, course supervisor.

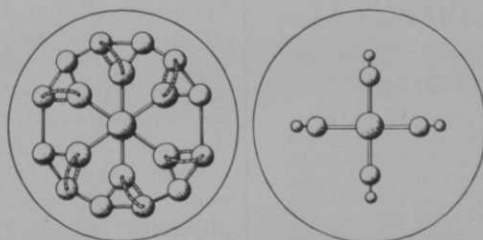
Walter Schruntek is new pro-supt. at the Renaissance GC, Roslyn, L. I., N. Y. . . . Work is underway on the 18-hole course being built for the Loch Ledge resort in Yorktown, N Y. . . . Managing director of the operation is **Robert Murray** . . . Supervising the construction of the course is **George Squires**, whose father is supt. of Lake Success (N. Y.) GC . . . Pro **Nick Petrillo** says that the 10th and 11th holes designed by **R. T. Jones** in re-

It's TRIONIZED!

That's why Scotts can guarantee greater benefits for every fertilizer dollar you spend — or money back.

When you apply Scotts ProTurf brand to your greens, fairways or tees, you put on fertilizer that is unique and patented. There is no other like it.

The molecular structure of Scotts Trionized fertilizer (left below) illustrates the complexity as compared with other fertilizers (right below)



Really effective grass nutrition requires complex molecular bonding to cope with the vagaries of nature in the matter of soil temperature and moisture supply as well as the fact that grass is a very complex organism.

And Scotts gives you economical application too. It is power packed yet safely applied by unskilled help. No odor and no burn.

The patented *Trionized* bonding of Scotts ProTurf Fertilizer provides the governor that assures strategic release of nutrients which in turn assures controlled growth of greener, sturdier turf.



Marysville, Ohio

The one company on this planet that devotes all its efforts to grass



Better greens
with less labor!

METE-R-MATIC

The Original
Powered Top Dresser

A "one-man gang" when it's time to top dress greens! Only the Mete-R-Matic has the exclusive rotating brush which drives top dressing materials into the base of the turf, resulting in a smooth, even job that requires no raking or mat dragging . . . and one man can do the complete job. Exclusive steel treadmill at bottom of hopper, with metering gauge, gives accurate control of spreading rate. No vibration mechanism. Handles extremely wet materials too. Power to spreader can be neutralized to allow powered transport.

EDGE-R-RITE

POWERED
TURF EDGER

The completely better way to edge sand traps, walks, driveways, flower beds.



CLEAN!

Vertical cutting blade leaves a continuous sod strip which can easily be gathered, unlike spinning blades, which scatter grass and dirt over a wide area.

FAST!

Powered by a 2½ H.P. two-cycle gasoline engine, EDGE-R-RITE moves smoothly and easily over any land contour, cutting all types of sod cleanly.

Write for free catalogs

SOD MASTER

3456 No. Washington Ave. • Minneapolis, Minn.

vamping Bellport GC on Long Island, N. Y. are as good as anything you'll see . . . Timberlink Par 3 GC is adding nine more holes to its Ligonier, Penn. links . . . New club pro-supt at Elmhurst, CC, Scranton, Penn., is **Ken Rutherford**, who was formerly at Lebanon CC.

Oak Grove (N. C.) GC, owned and built by **Dewey Davis**, opened its 9-hole 3024-yard course recently . . . Arabat, N. C. is the site of a course being built by **Kirby Bowman** . . . Bowman says the first nine holes will be ready this fall . . . An 18-hole lighted miniature was opened recently by **George Hall** in Reindack, Ia.

Owners **Jim Wood-Smith** and Pro **Jim Cochran**, say their new clubhouse and swimming pool and course being built in St. Louis, Mo., will be ready soon . . . Lancaster (Penn.) CC is undergoing a \$461,955 renovation that will add a pro shop and men's lockerroom, a complete air conditioning system and a change in the facade of the building among other things . . . Work has begun on the new \$750,000 West View CC in Topeka, Kan. with the clubhouse expected to be completed by fall and the course ready next spring.

John Plumbley, president and general manager, has announced that the 18-hole Forest Cove GC course, Houston, Tex. was opened in June . . . The clubhouse will have a fall opening . . . The first nine of the par-72 Panorama GC at Conroe, Tex. (north of Houston) is now open . . . Architect is **Jay Riviere** . . . **Dale Stuart** is pro-owner of the Par 3 Salem (Ore.) Golf Land pitch and putt course, which opened recently . . . Golf Land also has a driving range and a miniature course.

Construction has begun on the 3100-yard course of the Riverview Club near Wheelersburg, O. . . . General manager of the club is **Paul Penotte** . . . Scenic GC in Belmont, N. H. opened officially recently with a tournament in honor of the builder and owner, **John Drouin** . . . Pro at Scenic is **Bud Levasseur** . . . Wayne, N. J. is the site of Packanack Lake GC, which opened its nine holes recently . . . Pro is **Dan O'Rawe** . . . West-Park CC's new clubhouse is being built with volun-

No need to squint
SHERLOCK. There's **NOTHING**
TO PICK-UP on a green treated
with **POWDER BLUE!**



Sherlock Holmes isn't needed to solve this mystery. When Powder Blue is sprayed on a green, there's not a trace of solid granules or smelly lumps to be picked up by the mower.

Powder Blue* is the wetttable powder type of Nitroform® Hercules Powder Company's turf food. The first sprayable ureaform, Powder Blue penetrates close-knit turf to reach the soil surface. It is odorless, and it can be applied safely at any time of the year. With 38%

nitrogen, fewer applications are needed. Thus, fewer bags have to be handled, and less storage space is required. And, Powder Blue resists leaching, even on heavily watered turf.

Nitroform is available in two forms: granular Blue Chip® for conventional spreading, Powder Blue for liquid application. Both release nitrogen slowly at the rate required for healthy turf.

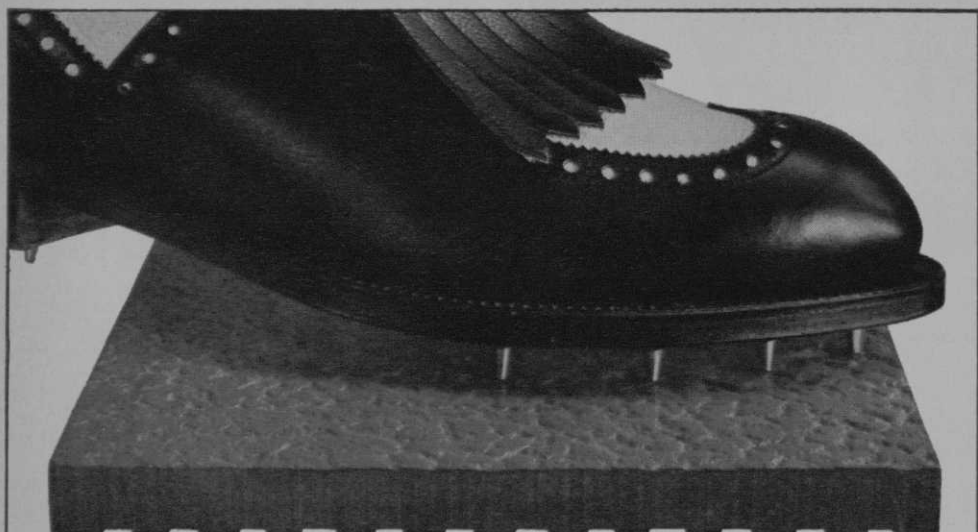
Let the Hercules representative clue you in on this case. It's elementary, Watson.



HERCULES
NITROFORM®

*HERCULES TRADEMARK

SN64-6



Carlyle Golf Club Quarry Tile... combines the beauty and durability of ceramic quarry tile with rippled non-slip surface. In a variety of rich colors, 6" x 6" x 1/2" in size, for new floors or resurfacing. Contact your ceramic tile contractor or write direct. **The Carlyle Tile Company, Ironton, Ohio; or Jordan Tile Mfg. Co., 909 Railroad St., Corona, Calif., 91720.**



teer labor . . . Located near Port Wentworth, Ga. the club plans to add a pool and Par 3 course in the near future.

Mt. Airy (N. C.) CC's 9-hole course is adding a sprinkler system . . . Lago Acres GC in Keota, Ia. recently opened . . . All persons in the Keota school systems are eligible to use the course under school sponsored programs with adequate school supervision . . . Whitehaven CC, near Memphis, Tenn., has opened its new clubhouse and course of 6663 yards with a par 70, according to **Monk Joyner**, pro . . . The course was designed and built by **John Frazier** . . . First nine of Arundel, Me's. Dutch Elm GC opened recently . . . Owner of this 3030-yard course is **Lucien Bourque**, who has begun work on the second nine.

Members have approved a decision to provide extensive remodeling of the Urbana (Ill.) CC . . . Architect **David Wallace** estimates it will cost the city of Winter Haven, Fla., \$212,000 to build its new 18-hole par-72 course . . . Approval has been given and work should take about

eight months from the start of construction . . . **Russell Roberts** will design the Penn Oaks 7200-yard course which will be the center of a real estate development near Wilmington, Del. . . It is being built by **Alfred J. Vilone, Sr.**

The Lindenwood GC, owned and built by **J. Russel Wylie**, near Washington, Pa., opened its par-36, 9-hole course recently . . . Work is underway on the second nine . . . Lindenwood's site resembles a pool table . . . Only two holes have as much as one per cent grade . . . The remaining holes are level or have a slight downhill grade. **Bill Gray** former pro at Chockoyotte CC, now pro at Summer Hill GC in High Point, N. C.

A group of private developers, under the temporary presidency of **Dr. Powell Fry**, and **Bill Andrews**, developer of the project, have purchased 160 acres of land near Stillwater, Okla. for development of an 18-hole course and clubhouse . . . **Reginald Heinitsh** is developer of Lake Toxaway (N. C.) CC and Guest Lodge, where the first nine is open for the sea-