

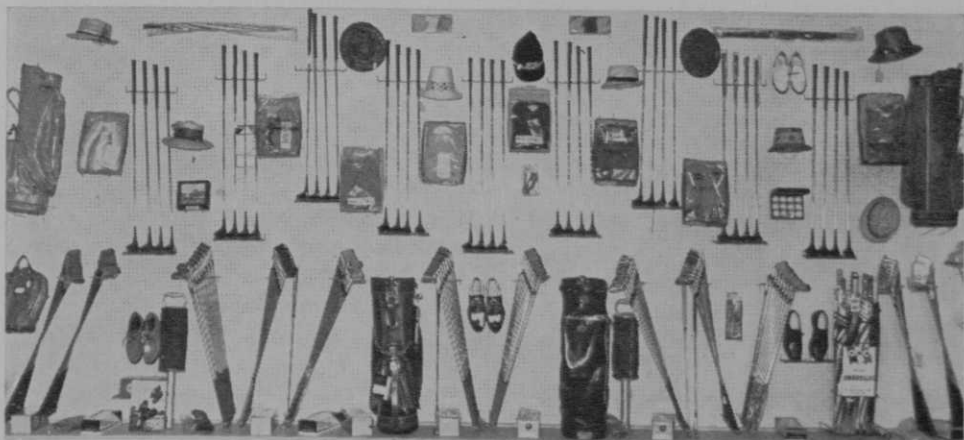
**PLAN  
NOW  
FOR  
'65**



## VERTICAL BAG RACKS — AT LOWEST COST

Each 8' section to start a row — \$99. — holds 32 of the LARGEST bags — on carts if ceiling height is 9' or more. Each additional 4' section to same row — \$35. — holds 16 bags. COMPLETELY PORTABLE — does not need fastening to floor. Installs in very short time. Send sketch of your room and traffic pattern for FREE estimate. Shipped FOB Dunedin, Florida.

## FOR A BEAUTIFUL SHOP — USE PEGBOARD



THE MOST FUNCTIONAL DISPLAY  
THE MOST ATTRACTIVE SHOP — REGARDLESS OF COST  
ALSO SPECIAL ARRANGEMENT FOR LUXURY paneled WALLS

**ALSO**

Golf Bag Tags — Signs — Golf Pride Grips  
Club Cleaning Equipment

SEND FOR CATALOG

# MILLER GOLF PRINTING & SUPPLY, INC.

2053 HARVARD AVENUE

• DUNEDIN, FLORIDA

# DIRECTIONAL & INFORMATIVE GOLF COURSE SIGNS



THE MOST DURABLE, ATTRACTIVE  
AND ECONOMICAL GOLF SIGNS  
ON THE AMERICAN MARKET

4" x 8"  
SIZE

**50¢**

Large, 6"x8" golf signs, 75¢ ea.  
Self-fastening aluminum stakes, 25¢.

Designed and produced with the same attention to good taste and quality that reflects country clubs and golf courses the nation over, T A T golf signs are a product of 35 years of industrial sign making know-how.

T A T golf signs are constructed of tough, durable, three-sixteenths deluxe tempered masonite spray coated with a snow white background and printed in vermilion red, with long lasting enamels.



**YARDAGE MARKERS**  
6 in. x 8 in. size

with new  
raised numbers  
(Send us your  
score card)

Sets of 18—\$28.80

Sets of 9—\$15.95

Including Stakes

**SAMPLE OFFER**

In order to prove to you the quality of T A T Golf Signs, send \$1.00 to cover handling, boxing and mailing and we will send a (4" x 8") sign with stake.

**BRAND NEW BROCHURE —**

just off the press — over 70 messages.

Free on Request

## TAT GOLF SIGNS

DUNEDIN, FLORIDA

Approximately a half million persons attended the nine-day Exposition.

Leon V. St. Pierre of Longmeadow CC was in charge of the GCSA exhibit. He was assisted by Richard C. Blake, Mt. Pleasant CC, Tom Blake, Oak Hill CC, Lucien Duval, Chestnut Hill CC and Herbert Berg, Pleasant Valley CC. Prof. Joseph Troll and several students in his turf management school at the University of Massachusetts and the Longmeadow CC's Ladies Golf Association also participated in the exhibit.

An exhibit of the Massachusetts Lawn and Turf Council adjoined the GCSA display.

## GCSA Convention Program

(Continued from page 30)

supt., Fairlawn CC, Akron, O.; Tom Burrows, supt., Glencoe (Ill.) CC; and Richard Blake, supt., Mt. Pleasant CC, Boylston, Mass.

Quiz the Experts: Carl A. Bretzleff, supt., Meridian Hills CC, Indianapolis, Ind.; Marvin H. Ferguson, Texas A & M University; Fred V. Grau, consulting agronomist; O. J. Noer, turf-grass consultant; Colin Smith, supt., Shaker Heights CC, Cleveland, O.; Leonard J. Strong, retired supt., Saucon Valley CC, Center Valley, Pa.; James E. Thomas, supt., Army-Navy CC, Arlington, Va.; James R. Watson, director, agronomy div., Toro Mfg. Corp.

**Friday, February 12**

**Morning Session**

Theme: Information Cafeteria.

Course Design for Both Maintenance and Play: Geoffrey S. Cornish, Fiddlers Green, Mass.

Work Smarter — It's Easier: Roger Thomas, Jacobsen Mfg. Co.

Trees for the Golf Course and Grounds: Arthur C. Drysdale, Sheridan Nurseries, Canada.

Electronics and the Supt.: Edward G. Mohava, supt., South View CC, West St. Paul, Minn.

1965 conference critique: John J. Spodnik, supt., Westfield CC, LeRoy, O.

Buyers' Guide • P 135

# Buying or leasing your own golf cart?



## Be sure it has a **TRANS-AXLE** by Dura

For finest, trouble-free performance and minimum maintenance, choose a golf cart with a "Fluid Torque Converter Trans-Axle" by Dura. This new, advanced-design Trans-Axle transmits power *directly* to the rear wheels—minimizes wheel slippage and consequent damage to turf. Chains and belts are eliminated . . . reducing power train maintenance and repairs. For information on golf carts (electric and gas) equipped with Trans-Axle.

*. . . write . . . wire . . . phone . . .*

**PARIS PRODUCTS DIVISION**



DURA CORPORATION

PARIS, KENTUCKY

64-T-2

# WHAT MAKES *Pargo* DIFFERENT?

PARGO HAS The First REAL Direct Drive  
The First 97% Efficient Differential  
Self-cleaning Disc Brake  
Strongest Fiberglass Body  
The Reputation of the Columbia  
Car Corporation Behind It.



Designed and Built by  
*Columbia Car Corporation*  
P. O. Box 336 — Charlotte, N. C.  
704 — 333-8841

PARGO WILL MATCH HOLE-  
FOR-HOLE ANY PRODUCTION  
MADE GOLF CAR . . . AND  
STILL HAVE RESERVE POWER!  
*These are PARGO PLUSES*  
*for a Prettier Profit Picture*  
*for YOU!*

## Weed Propagation

(Continued from page 38)

plant scientist, described how air pollution affects turf and ornamental plants.

• • • •

### 100 Attend MVGCSA Clinic

Approximately 100 supts., green chairmen, club officials and turf supply dealers attended the Mississippi Valley field day held last fall at Westwood CC in St. Louis. Visitors spent most of their time checking plots on which fertilizer and pre-emergence trials had been conducted the previous year, and in observing Bermuda and zoysia selections planted on clay soil with north slope exposure. An experimental putting green planted in three separate bents and one combination of bents in three different soil mixtures, also was inspected by those attending the field day.

Bill Small of Malinckrodt described the trace nutrient applications made on the experimental putting green, and also discussed how the perennial spring "dead

spot" which has plagued Bermuda in the St. Louis and Southwest areas can be controlled with a product developed by his company. Jesse DeFrance, now a consultant with O. M. Scott, told of the hundreds of headaches he had incurred in years past in advising St. Louis supts. how to live through summertime sieges of heat and high humidity. The third speaker on the program was Jim Latham of the Milwaukee Sewerage Commission. Latham departed from the weed theme for the MVGCSA meeting and brought his listeners up to date with the latest reports on the overseeding of Bermuda fairways.

• • • •

### Tenth New Mexico Meeting

John A. Long of O. M. Scott Co., James R. Watson of Toro and Marvin Ferguson, green section director for the USGA, were the principal speakers at the 10th turf conference, conducted in October, by New Mexico State U at University Park.

Long reported on new developments in grasses, saying that tests on Texturf

NEW TROJAN 217 BRINGS MORE DRIVING POWER IN '65\*



**\*All new the TROJAN 217 . . . delivers nearly 40% more capacity . . . and fits most golf carts . . . with the same dimensions except 1-1/8 inch higher.**

With 217 Ampere Hour capacity this battery is engineered for top performance on the most difficult terrain. It gives more holes of golf . . . and the reserve capacity reduces deep cycling, adding many months to the battery life.

The new Trojan 217 "Mileage Master," like the "170" and "190," features quarter-turn vent caps that reduce service time 75%. Write for complete details.

**TROJAN BATTERY COMPANY, 724 EAST 61ST STREET, LOS ANGELES 1, CALIFORNIA**



10 (T-47) and Tifway continue to point to these Bermuda strains as being exceptionally well adapted for recreation as well as lawn areas. Jim Watson emphasized that grass actually has a precarious existence, considering that nature doesn't intend for it to be cut as short as it normally is. As a result, moisture and fertility conditions have to be ideal or most strains won't survive periods of stress. Ferguson decried poor planning in the installation of irrigation and drainage systems, which is in evidence at many courses throughout the U.S., and said that much of the trouble caused by pythium and other diseases last summer was due to the poor engineering of these installations.

### Michigan Report Published

Michigan Agricultural Experiment Station, Michigan State U., East Lansing, recently published the "Michigan Turf-grass Report" which was compiled and edited by James Beard, turf researcher in the crop science department.

The first article, dealing with turf

varieties in Michigan, contains information of interest to a wide range of people, including supts. There are also articles on seeding rates and bentgrass putting greens.

## Tree Restoration

(Continued from page 26)

the greens. Along another fairway that is bordered by apartment buildings, the Shaker Heights greenmaster has blended low lying evergreens, firs of medium height and tall trees into a panorama that subtly softens the harsh lines of the buildings. Surrounding the parking lot on three sides is an unusual hedge of hard maples that has been shaped by trimming the trees square across the top at a height of about 20 feet.

What Smith considers his masterpiece is located close to the center of the course. A high wire screen at the end of the practice range is hidden by a long line of poplars fronted by one red and one scarlet oak, planted about 50 or 60 feet

*"Outdrives them All"*

**BOWERS**  
*Power* **RAM**  
**GOLF CAR BATTERY**



Bowers power-full POWER RAM golf car battery stays stronger, lasts longer... drives your golf cars further, exceeding all your expectations. The POWER RAM's extra distance means extra profits. Replace with Bowers POWER RAM. Write for complete details.

# BOWERS

**BATTERY AND SPARK PLUG CO.**  
(Div. of General Battery and Ceramic Corp.)

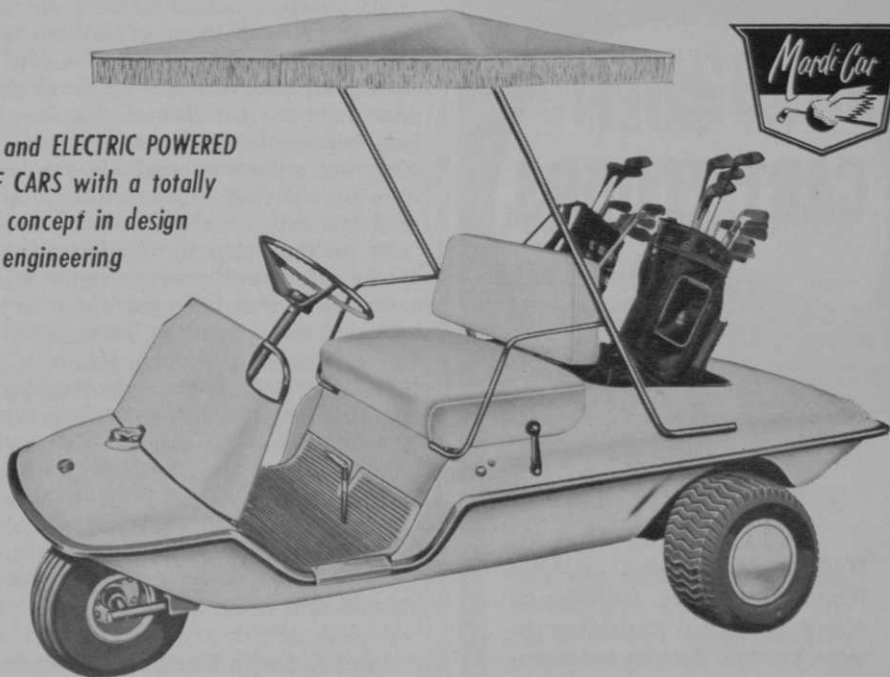
**READING, PA.**

# New 1965 Mardi-Cars



FOR GOLFERS ON WHEELS WHO DEMAND LUXURIOUS CARE-FREE COMFORT NOW!

GAS and ELECTRIC POWERED  
GOLF CARS with a totally  
new concept in design  
and engineering



## ONLY *Mardi-Cars* HAVE ALL THESE STANDARD FEATURES:

- ✓ DURA "Fluid Torque Converter" Trans-Axles
- ✓ No chains or belts—direct drive to Trans-Axle
- ✓ Unitized, Clam-Shell, all steel body
- ✓ Superior power units on gas and electric models
- ✓ Exclusive automotive type hydraulic brakes
- ✓ Independent parking and hill holder brake
- ✓ Single pivot pedal control
- ✓ Wrap-around rubber bumper
- ✓ Luxurious sofa seat and back
- ✓ Largest tires offered as standard equipment —and many more!

**MARDI-CAR, Inc.**  
21930 Groesbeck Hy., Warren, Mich. 48089

I am interested in the 1965 Mardi Cars, please rush brochure and complete details.

Dealership  Club Pro  Personal Use  
DISTRIBUTOR INQUIRIES INVITED

NAME \_\_\_\_\_

ADDRESS \_\_\_\_\_

CITY \_\_\_\_\_ STATE \_\_\_\_\_ ZONE \_\_\_\_\_

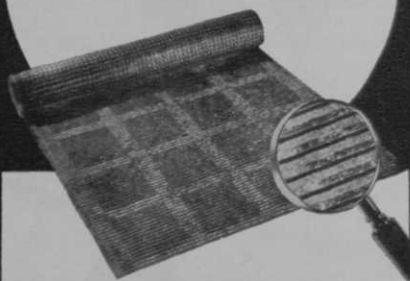
**MARDI-CAR, Inc.**

21930 Groesbeck Highway, Warren, Michigan 48089

# SHADOW TONE

## Spike-Resistant MATTING

for **GOLF  
CART FLOORS**



Made of tough nylon synthetic fibers, rubber and additives to afford unequalled resistance to wear, scoring, denting and puncturing. Slip-resistant, wet or dry. Easy to clean. Unharmed by sunlight or extremely high or low temperatures. Grease-resistant. Attractive "two-tone" appearance.

Comes in rolls for easy cutting to desired size or in sizes cut to your specifications.

*Write for literature and prices.*

## AMERICAN MAT Corporation

587 Park Avenue Wapakoneta, Ohio  
Phone: (419) 738-2158

*"America's Largest Specialists in Floor Matting"*

apart. Lombardies that are planted in line have a way of presenting a stately appearance, but the addition of the two oaks gives the scene an uncommonly beautiful illusion of depth that isn't often captured. An arborist would undoubtedly agree that it is rare when anyone happens to contrive such an arrangement.

### And Flowers, Too

The course beautiful theme doesn't stop with the tree pattern at Shaker. While Colin Smith was being converted to becoming an aboriculturist he developed a great fondness for flowers. So, it wasn't long before the clubhouse grounds and many out-of-the-way spots on the course were overflowing with color from spring until late fall.

As another step in the beautification of the Cleveland course, Smith started a project two or three years ago of raising sandtraps from their flat beds so that they are seen obliquely. He feels that supts. overlook many opportunities to improve the appearance of their courses by not doing this. Traps have an endless number of striking configurations, but these too often are not seen because the traps are buried at or below the grade level. It is only when they are embanked that the full character of the green is brought out.

### Lynn A. Smith Elected President of Southern California Golf Assn.

Lynn A. Smith, president of Picco Industries of El Monte, Calif., was recently elected president of the SCGA. During the



past year he served as vice-president and was chairman of the association membership and tournament committee. Smith succeeds Charles H. Laws, and has served on the SCGA board since 1956. He is a member of the Seniors Golf Assn. of Southern Cal and also is a director and secretary of the Calif. Golf Assn. and Calif. Dist. Chairman of the USGA Greens Section.

Other officers elected for 1965 are: Paul Giesser, vp; Dr. Wynn Fredericks, secretary; and Gordon Booth, treasurer.



## Grau's Answers

(Continued from page 42)

likes and dislikes, his game, etc. and other personal facets may pay off handsomely. Everyone likes to be understood and appreciated.

Others who are seen frequently by the supt. are salesmen. They have their own points of view which may not be fully appreciated by the supt. Their basic function is to sell but they must be capable of serving in an educational capacity. In a large measure, salesmen in the turf-grass industry have become an extension of the extension services of the universities. The difference is that the college specialist has nothing to sell but information and service. By appreciating the point of view of the educated salesman, the supt. can gain valuable knowledge concerning products and technics.

Do we understand the potential dangers of chemicals that we handle frequently as a matter of course? I'm sure that we read the labels and note whether or not the material is poisonous or dangerous, but do we really fully appreciate the warnings? The National Safety Council reports these grim statistics for the period 1946 to 1960: a total of 524 deaths; due to arsenic 6; cyanide 41; chlorinated hydrocarbons 85 (35 for DDT); fluorides 26; nicotine 50; organic phosphates 105 (73 for parathion); phosphorus and P-compounds 211 (201 for rat poisons).

The turfgrass industry can gratefully note that no fatalities were recorded for mercury and mercury products which are used in large quantities for disease control.

### Seeks Dense Turf

**Q.** We seeded our new greens to a 50-50 mixture of Seaside and Colonial bent at 2 pounds per 1,000 sq. ft. We can't seem to get the turf to fill in and make a dense putting surface. What do you suggest? (Ohio)

**A.** You have furnished no information on fertilization. It is possible that the grass is hungry for nitrogen. Another factor is your choice of grasses. Colonial bent is a bunch-type grass that does not spread to form dense turf as creeping bents do.

My suggestion is to treat these greens with the hydroseeding technic is to use one-half pound of Penncross seed to 1,000 sq. ft. and the suggested fertilizer. Repeat two weeks



## McLAUGHLIN

### Range, Miniature, Pro Shop Golf Balls

Made of finest materials, carefully supervised. Covers contain the new DUPONT NEOPRENE HC for maximum durability. Finest URETHANE enamel used.

★★★★★

### WANT TO SAVE ON RANGE BALLS?

Have your culls rebuilt the McLAUGHLIN way. Exclusive process gives them same durability as new range balls. Covers and paint the same as our new range balls.

★★★★★

Range and miniature supplies and equipment. Send for catalog. Used balls bought, sold and exchanged.

Free samples of balls  
on request.

★★★★★

YOU CAN PAY MORE —  
BUT YOU CAN'T BUY BETTER!

HUGH J. McLAUGHLIN & SON, Inc.

614 N. Indiana Avenue, Crown Point, Indiana

# Which 2 Kinds of Golf Shoes?

THERE ARE 2 kinds of golf shoes—street shoes with spikes added, and *Bowen* golf shoes—designed, built, and styled with only golf in mind. Only *Bowens* are the *Sports Golf Shoe*.

Most pro-shops can profitably carry only two lines of golf shoes. Pick any one of the many excellent heavyweights—with heels—but be sure *the other brand is Bowen*. No sense in carrying two heavyweights when one will do—one plus featherweight, specialized, flat-soled *Bowens*.

In every active sport, specialized shoes are the most important single piece of equipment. Tennis, football, basketball, sailing... every active sport you can name uses flat-soled shoes like *Bowens*. *Convincing*, isn't it?

Order now, for immediate or for spring delivery, or write for 1965 catalog in full color.

*Bowen*  
Sports Golf Shoes



Bowen, Inc., 35 Fillmore St., Pasadena, Calif.  
JOHN W. GLASS, Vice President for Sales  
Box 873, Dunedin, Florida  
Service Warehouses:  
WILTON, CONNECTICUT: Pedersen Sales Company  
In February:  
CHICAGO: 2603 West Lake Street, Melrose Park  
DALLAS: 938 Exposition Avenue

later. After that, maintain a high N level to encourage the grass to thicken. Be very sparing with topdressing for a couple of months. Make sure that the pH range is not limiting.

## 10-6-4 or Straight?

Q. We had soil samples taken from our fairway for tests at three different laboratories. Results were in agreement showing pH 5.6, very high phosphorus and very high potash. We will apply limestone to correct the acidity. One source of information recommends a 10-6-4 fertilizer; another recommends straight nitrogen. We have mostly Bermudagrass. What should we do? (Missouri)

A. The limestone is essential. With ample supplies of P and K in your fairway soils it is hard to see why you should apply anything but straight nitrogen. Eventually the levels of P and K will drop to the point where a complete fertilizer can be justified. Until that time you will get the greatest value for your fertilizer dollar in straight nitrogen.

## Bentgrass Seeding

Q. We have used your suggested procedure for hydroseeding bentgrass seed with very good results. We seem to notice that we get quicker germination with hydroseeding than with ordinary dry broadcast seeding. Can you suggest a reason for this? (Indiana)

A. Research has shown that many seeds have substances in their seed coats that inhibit or delay germination. Soaking the seed overnight or washing the seed seems to remove the inhibitor. In the hydroseeder tank (spray tank) the seed is churned and agitated in a water-and-fertilizer slurry. This effectively removes the inhibiting substances so that, when the seed-fertilizer mix is sprayed on the prepared seed bed, it is ready to germinate at once. Records show that bent seeds often show sprouts in three days.

## Chicagoland Golf Assn. Officers

Dan Taggart, Arlington (Ill.) CC, was elected president of the CGA at the November meeting of the association held at Long Grove (Ill.) CC. Fred Willey of White Pine CC was elected vp; John Coghill of Silver Lake CC was elected secretary; and George Gee, Sr. of Big Run CC was elected treasurer.

## Second Pittsburgh Golf Show

The second annual golf show, sponsored by the Tri-State PGA, will be held in the Civic Arena in Pittsburgh, Mar. 12-14. Last year the show attracted more than 5,000 golf followers.