

TITLEIST
Unchallenged
tournament
leader
for the
16th
straight
year

Titleist has been played
 by more professionals
 and amateurs
 in big-time competition
 than any other ball.

Look at the tournament record

TOURNAMENT	Playing Titleist	Nearest Competitive Ball
Los Angeles Open	46	25
San Diego Open	49	23
Bing Crosby Open	118	50
Lucky Open	53	24
Palm Springs Open	206	85
Phoenix Open	59	25
Tucson Open	91	18
PGA Seniors	233	32
New Orleans Open	53	24
Pensacola Open	63	22
St. Petersburg Open	58	25
Doral Open	42	22
Azalea Open	74	22
Greater Greensboro Open	65	27
Masters	16	23
Houston Classic	32	27
Texas Open	57	28
Waco Turner Open	66	22
Tournament of Champions	3	6
Colonial Invitational	7	16
Oklahoma City Open	66	24
Memphis Open	56	27
"500" Festival Open	48	25
Whitemarsh Open	39	26
Thunderbird Classic	28	21
Buick Open	55	28
N.C.A.A. Open Championship	181	36
U.S.G.A. Open Championship	53	22
Cleveland Open	37	27
39th Amateur Public Links	92	24
P.G.A. Championship	54	26
Insurance City Open	50	30
U.S.G.A. Jr. Amateur	95	17
Canadian Open	62	31
Western Open	43	30
St. Paul Open	55	25
American Golf Classic	23	17
Carling World Championship	24	34
Dallas Open	64	24
U.S.G.A. Amateur	109	13
Portland Open	56	28
Seattle Open	61	21
Fresno Open	64	29
Sahara Invitational	34	23
Sunset-Camelia Open	61	24
Jess Askew Mountain View Open	66	26

2967 1204

ACUSHNET GOLF BALLS

SOLD THRU GOLF COURSE PRO SHOPS ONLY • REMEMBER: NO ONE IS PAID TO PLAY TITLEIST



®

The York Road GC, Jamison, Pa., has agreed to change its name to the Bucks County GC of York Road in an amiable out-of-court settlement with the Old York CC (Montgomery County) . . . In a suit the plaintiff said the new club was trying to "obtain the benefits of the plaintiff's reputation" . . . The Old York Rd. club also stated in its suit that it is a non-profit organization while the defendant is a profit-making club . . . **James P. Callahan** of Kennett Square, Pa. plans to build a 9-hole public course and driving range in East Marlboro township . . . Elm Fork Park in northwest Dallas, Tex. will be the site of an 18-hole public course with construction on course beginning late this year . . . Merrick, N. Y. will have a new 9-hole course on a land fill site next to the town incinerator . . . Palm Beach County, Fla. claims its title as "golf capital of the world" is intact with 34 courses and one in the building stage.

Havemeyer Park in Huntington (L. I.), N. Y. is being developed as a golf course with construction underway . . . Amherst (N. Y.) town board has voted to authorize \$200,000 in bonds to purchase about 160 acres adjacent to the Amherst-Oakwood GC to enlarge the course from nine to 18 holes . . . **Bob Elder** will be architect and builder of a new course near Burtonsville, Md. . . . Riverside Hotel Invitational, Cambridge Springs, Md., Sept. 20-21 will have a \$4000 purse with pros from Northern Ohio PGA, western New York state, and Tri-State PGA chapter (Pennsylvania, southeastern Ohio and West Va.) competing. . . . **Mel Smith**, pro at the Valley Club, Santa Barbara, Calif., has been named pro emeritus by the board of directors . . . **Phil Clavel** now is Valley pro.

Club president of the National GC in Palm Beach Gardens, Fla., **John D. MacArthur**, has announced an easy payment plan for annual dues, involving pay-



SWINGING AROUND GOLF

News of the Golf
World in Brief

By **HERB GRAFFIS**

Front Cover

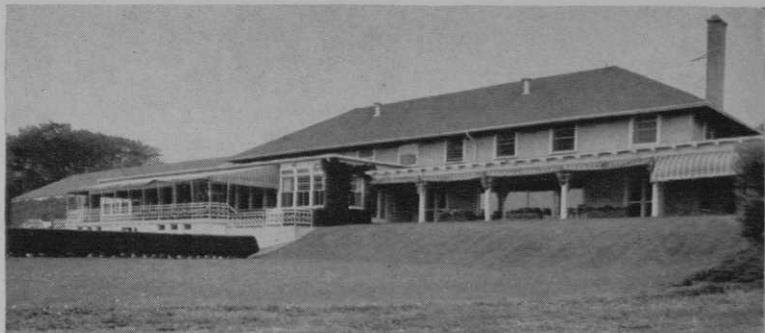
Hamming it up just a little as they congratulate their new president, John Zontek, are five past prexies of the Northern California PGA section. They are (l to r): Dewey Longworth, Eddie Duino, Pat Markovich, Tom Fry and Lyle Wehrman. Zontek succeeds Wehrman, national PGA pro-of-the-year for 1964.

Modern surgery at Niagara Falls Country Club

(not even a scar at the finish)



Trencher cuts a path for more than 11,000 feet of cast iron pipe used in the new irrigation system. Note plastic blanket to the left. This caught backfill and kept it from soiling the turf.



Niagara Falls clubhouse provides facilities for more than 500 members. Established in 1900, the club is among the oldest in the nation.

This was the scene at Lewiston, New York, as the Niagara Falls Country Club installed a complete cast iron irrigation system. Tees, greens, fairways, everything. A unique construction touch: the long plastic strip to the left of the trencher. It prevented turf from being soiled by backfill. When the trench was filled, turf replaced and the plastic strip removed, it was hard to tell the job had been done.

Of course, cast iron pipe helped simplify the work. No fussing with this sturdy line; it went in as fast as the trench was opened. Push-on joints helped, too. Workers found them easy to assemble, without special tools. All in all a fast, efficient installation from cast iron pipe. The kind of installation that puts any club dollars ahead—and spares irrigation headaches for long years to come.



CAST IRON PIPE

THE MARK OF PIPE THAT LASTS OVER 100 YEARS

AN ASSOCIATION OF QUALITY PRODUCERS DEDICATED TO HIGHEST PIPE STANDARDS: Alabama Pipe Co. • American Cast Iron Pipe Co. • Glamorgan Pipe & Foundry Co. • James B. Clow & Sons, Inc. • Lone Star Steel Co. • Lynchburg Foundry Co. • McWane Cast Iron Pipe Co. • Pacific States Cast Iron Pipe Co. United States Pipe & Foundry Co.

Get valuable information on planning and installation of golf course watering systems. Send for your copy of "Golf Course Irrigation," today.



CAST IRON PIPE RESEARCH ASSOCIATION

Wallace T. Miller, Managing Director
3440-G Prudential Plaza, Chicago, Illinois 60601

Send me a copy of "Golf Course Irrigation."

Name _____
 Title _____
 Name of Course _____
 Address _____
 City _____ State _____ Zip Code _____

ment of green fees . . . An initial payment of \$10 is made and when green fees reach \$200 a member is required to pay no more for the remainder of the membership year. . . . Spring opening is planned for the front nine of the Fripp Island (N. C.) CC according to pro-supt, **John Watson** . . . The course was designed by **George Cobb** and the back nine is already in play . . . Suffolk (N. Y.) County officials have announced that a new park will include an 18-hole course . . . Norwalk, Conn.'s Oak Hills Park is reportedly well on its way to becoming a municipal course and all-around recreational area . . .

Plans call for an 18-hole course near Litchfield Beach, N. C. by this fall . . . Course is to be designed by **Willard Byrd** and Assoc . . . Peach Valley GC (Spartanburg, S. C.) pro, **Bob Burchette**, tells of course improvements with new sand traps at the 18th and traps under construction at the 8th and 16th.

Supervisors of Bay County, Mich. have approved the development of a county golf course . . . Black Lake CC with an 18-hole course and real estate subdivision, located near Nipomo, Calif. is being developed by pro-teacher, **Eddie Nowak**, and eight San Joaquin Valley businessmen . . . Kinhega G & CC located north of Tallahassee, Fla., on the scenic Bull Run Plantation, is developing its 18, building a new clubhouse, and will use the former manor house as an exclusive hunting and fishing club according to **Bill Rogers**, general manager . . . An added nine designed by **J. Porter Gibson** will bring Pine Lakes GC in Charlotte, N. C. to a full 18 by September.

McRae, Ga. will have a nine hole course developed at nearby Little Ocmulgee State Park by the state parks department . . . Northhampton (L. I., N. Y.) CC has held a series of cocktail buffets in various nearby communities with officials present to inform guests about the club and membership . . . **Bill Kmetz** is now pro at Lebanon (Pa.) CC; he was formerly at Colonial Terrace CC in New Jersey . . . Concord Hotel (Monticello, N. Y.) is building a three-story dining room and golf facility adjacent to its new 18-hole course . . . Horwath & Horwath,



Joseph Megdell (seated left), sponsor of the Yankee Women's Open, has signed a contract raising the purse for the 1965 LPGA tournament by \$5,000 to \$15,000. With him are (standing) Robert L. McMurray, president of Atlas Valley G & CC, Grand Blanc, Mich., and Len Wirtz, LPGA tournament manager; and (seated) John Wilson, general chairman of the Yankee Women's Open.

accountants and auditors, have appointed Rudolph L. Leone, CPA, of Cleveland a general partner . . . New regional partners are Lynn Fairly, CPA, of New Orleans, George J. Kokesh, Jr, CPA, of New York City, William L. Sommer, CPA, of Miami . . . Leroy A. Steinke, CPA, of Kansas City has merged his practice with Horwath & Horwath and is now a regional partner. **Jim Taylor** has retired as a pro for a second time . . . He retired first from Mountain Ridge CC, West Caldwell, N. J. and now has retired from Lakewood CC . . . His replacement at Lakewood is **Harold Dore**, who moved over from Lakehurst.

Ernest Jones at Lake Success (N. Y.) CC, who lost a leg in World War I and went on to be a top instructor, received the Ben Hogan award for overcoming a handicap from the Metropolitan Golf Writers Assn. . . . **Chi Chi Rodriguez** says that he would like to be a member of the Ryder Cup team but is running into difficulty with a rather unusual and rigid interpretation of article V of the PGA constitution . . . Dr. J. C. Wilcox, research officer, Canada Dept. of Agriculture, research station, Summerland, B. C. was selected as Man of the Year by the Sprinkler Irrigation Assn. and was presented the award at the Association's 17th annual convention in Scottsdale, Ariz.

SUDDENLY!

you learn the joy
of playing
a set of clubs
made exactly
to fit you!

◁ *First Flight* ▷[®]



Custom made to any specifications prescribed by your
Golf Professional AT NO EXTRA COST. Ask him for details.

First Flight Company, Chattanooga, Tenn.

SOLD ONLY IN GOLF PROFESSIONAL SHOPS

65-10



AMERICAN SENTINEL[®] Vinyl Plastic Link ENTRANCE MAT

- **NON-SLIP, 100% HEEL-PROOF** . . . even the tiniest heel cannot become wedged between links.
- **REDUCES INSIDE MAINTENANCE COSTS.** Five tapered ribs on the walking surface of each link (approx. 700 per sq. ft.) buff dirt from the sole of shoes.
- **UNLIMITED DESIGNS** can be produced from the 20 decorator color links and marble color links. Your name or trademark can be included to personalize this prestige mat.
- **REVERSIBLE.** Adds years of service.
- **GREASE-RESISTANT.** The injection molded interlocking links are woven on a corrosion-resistant spring steel wire network. Rolls for easy cleaning.
- **THE MOST ECONOMICAL.** Long life means low cost per year. Meanwhile you have the best looking of all mats.

Send for
literature
and prices.

AMC
A MAT FOR EVERY PURPOSE

American Mat Corp.

587 Park Ave. • Wapakoneta, Ohio 45895

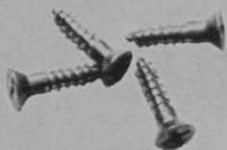
Phone: (419) 738-2158

"America's Largest Specialists in Floor Matting"

Ground breaking was held recently for a clubhouse with guest accommodations to be called Miami Lakes Inn & CC at the Miami Lakes (Fla.) GC . . . **John Goettlicker** has succeeded **Dick Masterson** as pro at the Sunnehanna CC, Johnstown, Pa. . . . Goettlicker was formerly pro at the Johnstown municipal course . . . **Tony Alosi** has been granted approval to construct an 18-hole Par 3 by the board of appeals, West Yarmouth, Mass. . . . Crystal Lake GC opened this fall in north Pompano Beach, Fla. . . . Pro is **Bob Adams** . . . Pro **Allan Freeman** states that work on south Florida's Sunrise CC is underway with 1000 eucalyptus planted throughout the course with more than 3000 total planned . . . Work is well underway on the Manchester (Tenn.) G & CC's clubhouse . . . Bristol, Tenn. Park and Recreation Dept. is busy constructing its new golf course.

A \$250,000 clubhouse for the country club at Apple Valley, suburban St. Paul, Minn., is nearly completed . . . **Harry B. (Trigger) Stewart** is the new pro, and the first ever hired, at Providence (Ky.) CC . . . As pro-manager Stewart (who is a member of the club and for a while longer a city employee) will establish and operate a pro shop and manage the clubhouse . . . 1964 saw the development of a new nine for the Great Falls (Mont.) municipal course . . . The board of zoning adjustments has approved the construction of the Beverly Drive CC in Franklin Canyon, West Los Angeles, Calif. . . . The club will eventually be ringed by 62 expensive homesites . . . A proposal to turn about 350 acres of Minneapolis (Minn.) Workhouse farmland into a public course has received approval of the Welfare Board and action is underway to transfer the land to the park board so that plans may be drawn.

Temporary offices in a local lumber yard and temporary facilities for social purposes at the Y community center are being used by the Elwood (Ind.) CC, which recently burned . . . **Gene Lesch**, who has resigned as pro of the Century CC, Phoenix, Ariz., will become pro at Twin Orchard CC, Lake Zurich, Ill., in March . . . Westbrooke CC in northwest



You need these like a hole in the head.

Face screws don't help a golfer hit a ball farther. Or straighter. Actually, they can only weaken the strength and resilience of the club head. That's why Spalding makes their Top-Flite® Registered woods without face screws.

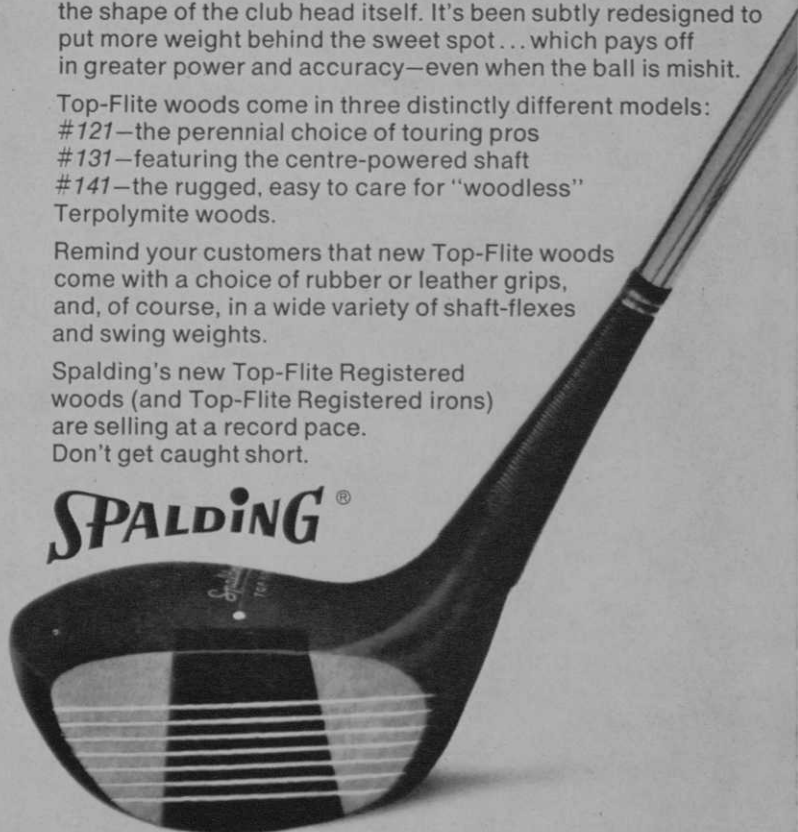
And for 1965, Spalding has made a significant advance in the shape of the club head itself. It's been subtly redesigned to put more weight behind the sweet spot... which pays off in greater power and accuracy—even when the ball is mishit.

Top-Flite woods come in three distinctly different models:
#121—the perennial choice of touring pros
#131—featuring the centre-powered shaft
#141—the rugged, easy to care for "woodless"
Terpolymite woods.

Remind your customers that new Top-Flite woods come with a choice of rubber or leather grips, and, of course, in a wide variety of shaft-flexes and swing weights.

Spalding's new Top-Flite Registered woods (and Top-Flite Registered irons) are selling at a record pace. Don't get caught short.

SPALDING®



Sold only through golf professional shops.

A. G. Spalding & Bros. Inc., Chicopee, Massachusetts.

Miami, Fla., which was built less than three years ago at a cost of over \$1,000,000, was sold recently to the YMHA of greater Miami for \$700,000 . . . The facilities will be used for Jewish and community activities . . . A cart house is being built at the New Orleans (La.) CC . . . A name for the 160-acre 18-hole course located north of Sidney, Ohio will bring the person devising the best name a year's free play on the course under construction according to **Robert Hepler**, president.

Permission has been granted to **Grant Newlove, Jr.** to build a non-lighted Par 3 course at Manlius, N. Y. . . . Members of the board of public works have criticized the Outagamie (Wis.) county board officials for not providing Appleton, Wis. with a public course . . . Macktown Forest Preserve (near Rockford, Ill.) golfers will pay higher fees and increased storage and use charges on carts in 1965 . . . Nine-hole course, a miniature course, and snack shop will be called Orchard Valley GC and be built at Marlboro, N. J. . . . The DuPage (Ill.) county board has approved the building of a miniature course and lighted driving range near Lombard, Ill. . . . This spring will see the opening of the Waukesha (Wis.) county public course, which was three years building at a cost of approximately \$262,500, including \$37,000 for moving power lines.

A new 18-hole course will be built in the western part of Howard County, Ind. and be known as the Green Acres GC, with an opening target date of June 1966 . . . South Hills, Pa. will be the site of the Hidden Valley CC opening this spring . . . Bergen County, N. J. will develop Overpeck Park in the Teaneck section with the building of an 18-hole links . . . A gift of land was made to the Bergen County golf course at Rockleigh, N. J. by former State Senator and Mrs. Walter H. Jones . . . Oceanside, Calif. will be the site of a \$60,000,000 planned community featuring, among other facilities, a 9-hole course . . . Upper Merion, Pa. is intent on acquiring the Valley Forge GC for recreation purposes either through purchase or condemnation . . . The present owners want to use the land for commercial, residential or industrial purposes . . . The owners are suing the city for removal



Ben Hogan, who took part in the Explorer Scouts' "Sports that last a lifetime" kickoff, played an 18-hole match with Bill Waller, Nashville, Tenn. youngster, in Ft. Worth last month and shot a 70 which becomes the target score for 1965 for 315,000 Scouts. Young Waller, who was chosen to play Hogan on the basis of his outstanding sports, scholastic and scouting achievements, had an 88.

of restrictive zoning ordinances . . . A new Par 3 nine is opening this spring between Cary and Crystal Lake, Ill.

March of this year should see the beginning of construction of Oak Hills Park municipal course in Norwalk, Conn. . . . This course was brought into being through the cooperation of several city agencies . . . **Roy O'Neil**, pro at Oxford CC, will become pro at Chicopee, Mass. municipal course . . . Auburn, Mich. will see opening of first nine of Sandy Ridge GC with the coming of good weather . . . Course will feature extra large greens and the second nine will be started this spring . . . The island of Bermuda claims it has more golf courses per person than any other area of the world. With the opening of the Southampton GC this year, it now has seven courses in its 21 square miles, one for about each 7000 people . . . Approval has been given for Newport News, Va. to build two new municipal courses . . . Over \$550,000 is to be spent on them.

National Baseball Players' golf tournament to be played Feb. 25-28 at Miami Springs course . . . Tourney is sponsored by the city of Miami . . . **Albie Pearson** is the defending champion . . . **John Brodie**, San Francisco quarterback, who won the