

Engineered and built for rugged durability and solid dependability!

VIKING QUALITY PROTECTS YOUR PROFITS with minimum payout for maintenance!



Viking I

Golf cars are money-makers. Or should be. But when one or more of your fleet is laid up for repairs, your profits take a tumble. Now, or ten seasons later, *Viking Golf Cars* keep profits at maximum with a minimum cost for maintenance. As manufacturing

specialists of Brand Name golf cars for twelve years, we make this statement without reservation. Viking leadership in styling, engineering and manufacturing, protects your investment, protects your profits. Buy *quality*. Buy *Viking*. Send coupon for details.



ELECTRIC & GAS GOLF CARS
Versal, Inc.
1626 Werwinski, South Bend, Ind.

Versal, Inc.
1626 Werwinski, South Bend, Ind. 46628
Send catalog and prices on the Viking line.

NAME _____

ADDRESS _____

CITY _____ STATE _____

BOOKING 1965
DATES NOW
THE PAUL HAHN SHOW

A ONE HOUR GOLF EXHIBITION THAT HAS THRILLED, AMUSED & AMAZED AUDIENCES ON EVERY CONTINENT AT MAJOR GOLF TOURNAMENTS AND GOLF CLUBS THROUGHOUT AMERICA.

Write For Brochure and Information
Paul Hahn, Box 691
Cape Coral, Florida



Sports commentator Jack Whitaker (l) and golf pro Cary Middlecoff are doing the commentary on the CBS Golf Classic matches broadcast on Saturdays through March 27. The 36-hole final will be carried on the network on April 3-4.

favor of a softer rule for a ball out of bounds." . . . The out-of-bounds ball often costs the golfer the \$1.25 for a good ball and he would have been better off if he'd missed the ball completely . . . Haldeman also referred to the controversy about the flagstick rule (34 —3c) with its loss of a hole or two stroke penalty . . . The R&A rule is: "The player incurs no penalty if his ball strikes the flagstick when it is not attended and is in the hole."

We used to think that leaving the flagstick in as a backstop made golf something like croquet but now are not sure as we have seen the present USGA flagstick rule is a time-killing nuisance when you're playing without a caddie and from a golf car . . . R&A based its rule on the fact that so many British golfers have no caddies but roll their bags on bag carts.

Women on pro staffs at clubs several years ago have graduated from the experimental stage . . . As sales and teaching assistants they've made profits for some smart male pros and several young women who have been trained by successful pros have gone into jobs of their own . . . Shirley Spork is one of that group who knows how to handle a pro job in an A-1 way . . . She's at a summer (June-Sept.) job at Sugarbush CC, Warren, Vt. and with Danny Forlani in the winter teaching at Indian Wells CC, Palm Springs, Calif. . . Miss Spork was re-elected chairman, teaching committee of the LPGA which will hold its 6th annual national school for golf instructors at Bowling Green (O.) State University . . . Shirley used to teach there before she went on the LPGA tournament circuit . . . There's a new course on the Bowling Green campus.

play rite use . . .

club brite

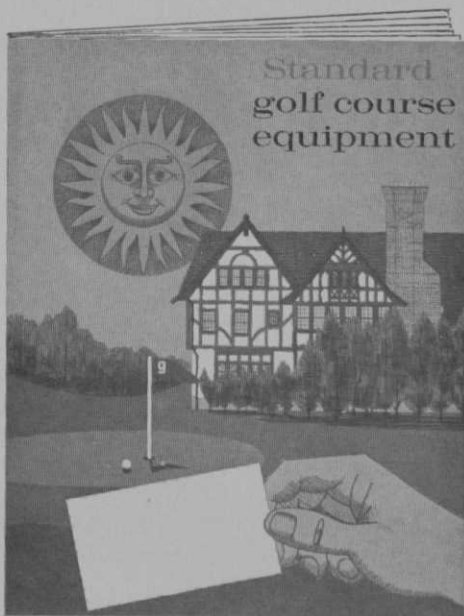
**cleans
polishes
protects
FAST!**

\$1.95

Good irons deserve good care and . . . New club brite takes care of that easily and economically. Club brite not only cleans and polishes your irons but protects them from rust and tarnishing. Keep your irons bright with club brite.

Get club brite from your distributor or mail your order with check to us. Dealers and Distributorships available.

AL-LO COMPANY—Brielle, New Jersey



For Courses That Consider Replacement Costs

You can buy cheaper equipment than Standard. But good stuff costs less in the long run.

Take Standard Riji-Cups for example. Initial cost is a little more. But these cups are virtually indestructible. They won't break, chip, crack, fade or corrode. Nearly 70,000 are now in use.

Consider Standard Flex-King Poles. Made of top grade fiberglass and scientifically tapered, they've been proved to outlast all others. That's why seven out of ten courses use them today.

It's the same with 40 different items in the Standard line. The best you can buy - and the best buy in the long run.



STANDARD MANUFACTURING CO., CEDAR FALLS, IOWA

Robert Trent Jones revising Oakmont's famous course near Pittsburgh to restore original concept . . . Jones also building 18 at Tarlac resort, near Manila . . . Due for play this fall . . . He's also building 18 Soto Grande for McMicking brothers' resort near Algeciras, Spain and 18 for Marabella CC, resort near Malaga, Spain. . . Soto Grande due to open in April.

Benkelman, Imperial and Wauneta, Neb. residents are investigating the possibility of a local country club at Enders Lake . . . 18 holes are planned . . . Maybrook, N. Y. will be the site of a gigantic housing development with a proposed nine as its central feature . . . The goal of 200 members has been reached by the Gordon (Neb.) G & CC . . . Financing can now go ahead for construction of a grass greens course and clubhouse.

Love on Teaching

(Continued from page 46)

for both the teacher and the pupil.

Love's next enjoinder is: Please don't try to make the golfer over! After playing the tour for three years and being exposed to just about every conceivable type of swing, Davis, like so many other people who make a study of the game, is convinced that there is no copyrighted way of hitting a golf ball.

A professional who becomes snarled in flailing arms, flying elbows and throws himself completely off center when he swings may hit the ball just as efficiently as a Littler or a Snead, so allowances should be made for the awkward amateur. He is never going to be converted to becoming a graceful swinger because neither he nor the pro will ever find the time to correct all his faults. But this person may have remarkable power, or strong hand action, or some other unusual endowment and his swing should be developed around whichever of these attributes he has.

Parallel Palms

It's hard to manufacture a golf swing, Love declares. The pro who tries to superimpose his swing on the pupil only confuses him and retards his progress. If a teacher is sincerely interested in helping a golfer he works to bring out whatever

native ability is there and, thereafter, helps the player to refine it. If Love insists on anything, it is to get the player to hold the club with the palms parallel and the grip securely held by the fingers.

Love has an obsession with club grips. He constantly checks his members to make sure that the grips on their clubs are as near perfectly fitted to their hands as possible. He feels that grips deteriorate from constant use and that a set that may have been right for a player when he bought his clubs isn't necessarily right two years later. "Golfers," says Dave, "should be just as fastidious about the grips of their clubs as they are about their shoe size."

What The Pro Learns

The Charlotte professional doesn't go along with the theory that a home pro's game has to suffer because he is exposed to so many different and, in some cases, inept swings that he sees on the practice tee. A poor effort by a student in coming into the ball, he maintains, should only serve to reaffirm what the teacher is convinced is the correct way of doing it. The same thing applies to all other components of the swing.

As for being just a little bored by having to suffer through a lesson period with a high handicap player, Love will have none of this. "A fellow who shoots 100 plus," he says, "occasionally comes up with a shot that is simply amazing. One of the best wedge shots I have ever seen was hit by one of my members who couldn't break 110. I was lucky enough to catch it and now I try to visualize or recapture how he did it every time I play a wedge."

Enough of the good shots he has seen around the practice range plus those that he has been able to concoct himself have enabled Dave Love to make a respectable showing in competition. He is the current Carolinas Open champion, and won the Carolinas PGA title in 1962. On a more grandiose level, he finished 13th in the 1963 USGA Open and the same year captured 12th in the Cleveland Open. In the 1964 Masters, Love was tied for the lead after the first round. In his eight years as a pro, Dave has qualified for four Opens and two PGA Championships.

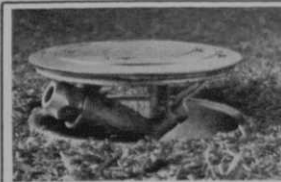


**THIS DIVOT IS LUSH AND LUXU-
RIOUS THE KIND GOLFERS
LOVE TO SWING INTO NOT ALL
DIVOTS ARE LIKE THIS ONE
BUT THOSE GROWN WITH A BUCK-
NER SPRINKLING SYSTEM ARE**

Buckner Automatic Sprinkling Systems put new economy and ease in golf course irrigation. Buckner's complete line of advanced pop-up sprinklers with famous Buckner automatic controllers and valves score perfect in performance. Series 1300 heavy duty rotary pop-ups, available in four sizes, hide below fairway level when not in use, provide fine-spray water distribution pattern and maximum penetration. New 11-station B11 controller enables down-to-the-minute fingertip control of watering, with operator choosing any days over a two-week cycle and any one of 24 hour starts. And Buckner's long-life manual systems are just as dependable. Swing along with Buckner. Mail coupon for Buckner's new golf course brochure.

Buckner® INDUSTRIES, INC.

WORLD'S LEADING SPRINKLER MANUFACTURER



BUCKNER INDUSTRIES, INC. Dept. "G"
P. O. Box 232, Fresno, California 93708
Please send illustrated golf course brochure.

NAME _____

ADDRESS _____

CITY _____

STATE _____

ZIP _____

GOLF CLUB SHOPS

CASH IN ON THE PRODUCT
THAT'S MAKING GOLF HISTORY!

E-BOND NO. 10-40 KINETIC EPOXY DRIVER INSERT RESIN

- Replaces plastic-screwed-inserts on golf drivers and woods
- Increase driver & wood distance by 10 to 20 yards
- Soon to be standard with most major club manufacturers

— write —

INTERNATIONAL EPOXY CORP.

501 N. E. 33rd Street
FORT LAUDERDALE, FLORIDA

CORRECT YOUR
GRIP with

Pro-Grip

... gives you
a firm hold for
every shot



MANUFACTURERS SPECIALTY CO., INC.
2736 Sidney St. St. Louis, Mo. 63104



— OVER 40 YEARS —
AUTOMATIC GOLF TEE
RENTALS
WRITE: Dept. G-F
PAR-TEE, INC.

860 E. 75th Street,
Chicago 19, Ill.

SAVE VALUABLE LABOR
on seeding operations

... use PIXTONE

THE PROVEN MECHANICAL STONEPICKER
— get details from manufacturer.
BRIDEPORT IMPLEMENT WORKS, INC.
P.O. Box 286G — Stratford, Conn. 06497

Golf Business News

Eastern Golf Co. Offers Two Picker Models

Eastern Golf Co., 2537 Boston rd., Bronx, N. Y. 10467, has two models of the Bailey Golf Ball Picker. The "wheel type" is designed for

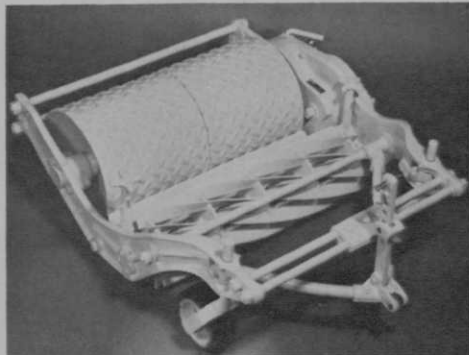


heavy duty on rough surfaces. It is constructed to absorb shocks caused by moving over high spots and solid obstacles. The "roller type" is recommended for good grass surfaces on level to

gently rolling terrain. Both models can be assembled in groups of two or more 44-in. units. Each unit can hold 600 golf balls in its steel wire baskets. Regulation size three units cover 11 feet. Models are available in a standard size of three units and a junior size of two units.

New Gang Mower with High Frequency-Low Cut

Roseman Mower Corp., 2300 W. Lake Avenue, Glenview, Ill., has developed a high-frequency, Lo-Cut Mower for moving the new



strains of grass that require low cutting heights. The unit features a 10-blade reel and provides preventative control of thatch and matting by cutting as low as 3/8-in. with a 1/2-in. frequency of cut. It is available in three, five, seven and nine gangs.



Rogers
-POWER-AERATOR-
ROGERS MFG. CO., INC. OLATHE, KANSAS

MODEL 580

- POWER AERATE
- REMOVE THATCH
- RELIEVE COMPACTION
 - PREPARE SEED BED
- SMOOTH ROUGH AREAS
 - DRAIN LOW AREAS
 - HARVEST STOLENS

STIMULATES

NEW GROWTH

ADJUSTABLE BLADE — 0 - 3-1/2"
 ANY GROUND CONDITION

ROGERS "Z" Bar Action *Bar Action* **ALLOWS**
POWER-AERATOR TO FOLLOW GROUND CONTOUR



Rogers
-AERO-BLADE-
ROGERS MFG. CO., INC. OLATHE, MO.

MODEL 509

STIMULATES NEW GROWTH

VERTICAL SLICING

FOR GREENS

0 to 2"

- Relieve Compaction
- Aerate - Spike
- Remove Thatch

Self-Propelled

Rogers
SWEEPER
ROGERS MFG. CO., INC. OLATHE, MO.

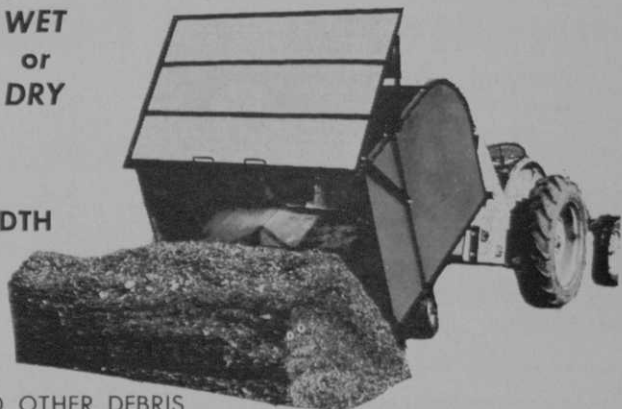
MODEL 720

5 CU. YD. HOPPER
 5 FT. SWEEPING WIDTH

Sweeps

ROCKS, PAPERS,
 GRASS CLIPPINGS,
 LEAVES, BOTTLES,
 BRANCHES, CANS, AND OTHER DEBRIS

WET
 or
DRY



ONE MAN OPERATION

3 POINT HITCH ACTIVATES SELF DUMPING HOPPER

ROGERS MANUFACTURING CO., INC.

202 N. MAHAFFIE ST., OLATHE, KANSAS 66061 ● PHONE: 913 764 1615 or 913 782 0831

Full Line of

GOLF

Equipment
Supplies

- Golf courses
- Miniature courses
- Driving Ranges
- Par 3 Courses

Serving only
the West

Western

GOLF SALES, INC.

1831 Colorado Avenue, Santa Monica, Calif.
90404 Phone Area 213 451-5454

Wisconsin Motor Tractor Engine

A model TR-10D cast iron and air-cooled tractor engine is being marketed by Wisconsin Motor Corp., Milwaukee, Wis., 53246. The unit has a displacement of 20.2 cu. ins. and weighs 80 lbs. It has a large industrial type carburetor for maximum power with minimum fuel consumption. The Ram-Thrust fuel system gives faster acceleration, according to the manufacturer, plus greater efficiency and ample load lugging power at low speeds to ease loads through sudden shock without stalling.



Steber Trailer Fleet Demonstrates Floodlighting

Steber Div. of the Pyle-National Co., 1334 N. Kostner Ave., Chicago, Ill. 60651, has been promoting illumination throughout the U. S. for the past year with a fleet of lighting demonstrator trailers. To meet increased interest for



on-location demonstrations, the truck carries a representative line of Steber lighting fixtures mounted on an adjustable mast. The telescoping mast automatically raises the floodlights to as high as 32 ft. to simulate particular installation requirements. Different lighting fixtures ranging through incandescent, mercury-vapor and quartz iodine lights in various sizes can be demonstrated to show patterns and effects. Visors or deflectors for controlling light spillage to avoid complaints among the neighbors also are demonstrated.

Gunderson Increases Sales and Modern Service Facilities

Gunderson Golf Equipment Co., Inc. of Lake Worth, Fla. has sold 175 Victor-Electri golf cars to Gunderson-Victor, a division, for approximately \$100,000. Gunderson also has a new modern plant in Lake Worth that handles all repairs and reconditioning of large fleets of electric cars.

Round Game Tables

SLICE TABLE COSTS

with

Leader For Over Half A Century

Monroe

FOLDING TABLES

Clubs, lodges, churches and other organizations save money by buying Monroe Tables direct from our factory. Many different models and sizes. Over 65,000 satisfied customers! Also direct factory savings on folding chairs, storage trucks, platforms, stages. New color catalog FREE! Write today!

THE MONROE CO. 12 Church St., Colfax, Iowa

Folding Chairs

Square Card Tables

For the BEST of the LATEST in
RANGE-PAR 3-MINIATURE
Equipment — Supplies — Fixtures
Consulting & Contracting Services

Write for complete catalog

WITTEK

GOLF RANGE SUPPLY CO., Inc.
5128 W. North Ave. Chicago 39, Ill.

THE PERFECT PACKAGED SHELTER!

100% STEEL

Breeze
PORT

\$198.

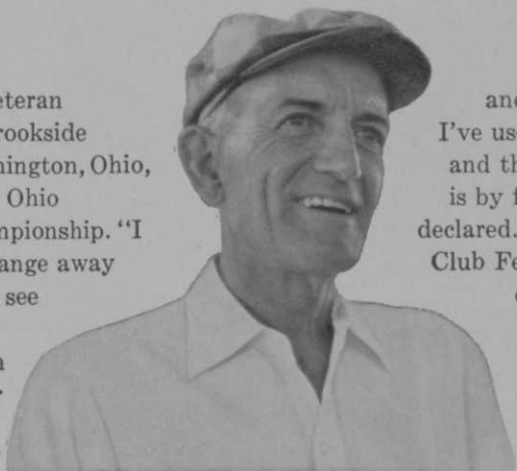
FREIGHT PAID

KWIK-BILT, INC. Box 6834, Dallas 19, Tex.



“They raved about my fairways . . .”

said Harry Willis, veteran superintendent at Brookside Country Club, Worthington, Ohio, of the players in the Ohio State Women's Championship. “I wouldn't want to change away from Agrico. I don't see how I could do any better. I've put it on greens at a 10-lb per 1000 rate when the temperature was 80°



and haven't had any burn. I've used all kinds of fertilizers and this Agrico Country Club is by far the best,” Mr. Willis declared. Get an Agrico Country Club Feeding Program for your course. Call your Agrico man or write American Agricultural Chemical Co., New York, N. Y., or Agricultural Chemicals Ltd., Toronto 15, Ont.

AGRICO[®] COUNTRY CLUB FERTILIZERS

GOLF
NATION-WIDE DISTRIBUTORS of
PAR 3, GOLF DRIVING
RANGE & MINIATURE
GOLF COURSE
EQUIPMENT.

Write for 1965 catalogue of supplies

NORTHERN
GOLF BALL CO.

2350 W. Roscoe St. • Chicago, Illinois, 60618

RYANS O.K. No. 4 SEEDER & SPREADER
4 Cu. Ft. (300 lbs) Capacity-3 ft. Spread



No Holes to Clog.
 Quick Shut-off Lever &
 Adjustable Gauge
 Screw On Handle.
 Spread Top Dressing,
 Nitro-Humus, Peat,
 Commercial Manure
 & Other Materials
 Weighs Only 69 Lbs.
 Write Dept. "G"

DEALERS WRITE FOR OPEN TERRITORIES

H. & R. MFG. CO., Los Angeles 34, Calif.

MAGIC FLUFF

Floor Covering
 Spike Resistant

NEW
MAGIC FLUFF

Tee Mats
 Keeps clubs from marring.

H. M. WISE

212 Helen Ave., Mansfield, Ohio

JENNINGS EQUIPMENT COMPANY, INC.

GOLF COURSE IRRIGATION
SYSTEM SPECIALISTS

DESIGN — MATERIAL — INSTALLATION
 RT. 38 MOUNT HOLLY, NEW JERSEY
 PHONE 609 — 267 — 1060-61

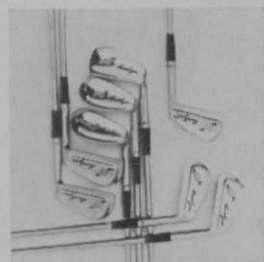
References Supplied



Turfgrass management students from Mt. San Antonio College, Walnut, Calif., recently toured Cal-Turf and farms at Camarillo, Calif. Cal-Turf president, Toby Grether, with pointer, explained root development in relation to height of cut to the visitors.

Percussion-Center Irons

AMF-Ben Hogan Co., 2912 W. Pafford, Ft. Worth, Tex., is making 1965 Ben Hogan



percussion-center irons. Unique engineering is said to place the club's center of power behind and slightly below the mid-point of the hitting surface. The precise relationship between weight concentration and striking area directs the full potential of the swing toward the ball at the moment of impact. The PCI irons are styled with "Flash Reaction" shafts with "True Flex" graduation. Grips are in Hogan leather, black with red, or slip-proof, black with white fill. The clubs are available in sets of nine at pro shops only.

MacGregor Plans Move
Into G. E. Plant

MacGregor Sports, a division of Brunswick Corp., has confirmed that final negotiations are underway to purchase two buildings of the



General Electric plant in Evendale, a suburb of Cincinnati, Ohio. The buildings comprise approximately 460,000 square feet of floor space. The final sale is expected soon.