



Bill Casper, who has made a habit of winning trophies and money in the last eight years, puts the squeeze on the J. K. Wadley Cup, which was awarded to him along with \$11,000 for winning the recent Western Open. Two weeks after claiming this event, the slim-downed Casper won the Insurance City Open in a playoff with Johnny Pott.

CC and Inn, Sept. 8-12 . . . The Federal Urban Renewal Admin. has approved a grant of \$356,400 to Upper Merion Township, near Philadelphia, Penn., to help purchase the 138-acre Valley Forge GC for public use.

A fifty weeks course beginning Sept. 7 for groundskeeper supervisor is being offered at Tri-County Tech, Pendleton, S. C., in cooperation with the South Carolina Employment Security Comm. of Anderson, Oconee and Pickens counties . . . Anyone between the ages of 18 and 60 may enroll . . . A member of the French team that won the first Women's World Amateur Team Championship Catherine Lacoste, played in the U. S. Women's Open at Atlantic City in early July . . . Miss Lacoste is the daughter of Rene Lacoste, top-ranking tennis player in the late 1920's and Mrs. Simone Thion da la Chaume Lacoste, former British and French women's golf champion.

The Chicago District Golf Assn. awards a certificate of merit to the boy designated by each of its member clubs as caddy of the year . . . The award program is part

# WINTER INJURY and SNOW MOLD

...have one thing in common

THEY ARE MORE SEVERE IN  
AREAS OF POOR DRAINAGE

## AQUA-GRO

... moves excess water out,  
prevents overly wet areas  
that encourage snow mold  
and winter injury

•  
*make*

### AQUA-GRO

*a part of  
your fall program*

**NOW!**

•  
AQUATROLS CORPORATION of AMERICA  
217 ATLANTIC AVE., CAMDEN, N. J. 08104

# CUSTOM MADE WOODS

#1 THRU #18

# CUSTOM MADE PUTTERS

Including Famous "WON-PUTT" & "PRO'S OWN"

# Repairs-Any Make Club

Fast Service—Reasonable Prices

Write for Catalogue and Price List.



*Bert Dargie* GOLF CO., INC.

3030 SUMMER AVENUE • MEMPHIS, TENN. 38112

PHONE 374-4688 AREA CODE 901

Buyers' Service

Page 103

Classified Ads

Page 101

## NEW CONCEPT IN TROPHIES!

Genuine Pewter  
Glass Bottom

### DRINKING STEIN

Ideal for Engraving.  
Ht. 5½". FULL HALF  
QUART CAPACITY.  
\$10.00 list.



### Golf Club Shoe Horn

Flexible Chrome  
Shaft. Leatherette  
Handle. 24" Long.  
Gift Boxed.  
\$1.50 list.



### HOLE-IN-ONE TROPHY

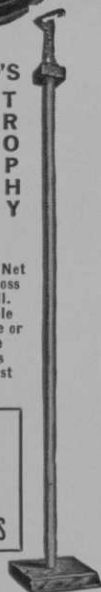


We will attach your winning  
Golf Ball on the top. Golf  
Pro! Honor every Hole-in-One  
with this inexpensive trophy.  
XPW-31 Ht. with Ball 4¾".  
Gen. walnut base. Sunray en-  
graving plate and ball stand  
\$4.95

WORLD'S  
T G T  
A G L  
L O L  
L F R  
E S T  
E S T  
P H Y

For High Net  
High Gross  
40" tall.  
Available  
with male or  
female  
figures  
\$6.45 list

BIG  
PRO  
DIS-  
COUNTS



WRITE FOR FREE CATALOG

### THE TROPHY & MEDAL SHOP

FACTORY • OFFICE • WAREHOUSE

4560 N. Western Avenue

Chicago, Illinois 60625

Telephone: 312/271-7600

of the CDGA's service to its members and is intended to provide an incentive for all caddies . . . Posters announcing the program are available to all member clubs.

Ten pros have been picked by the Golf Writers Assn. to play in the \$100,000 American Golf Classic at Firestone CC, Akron, O., Aug. 23-29 . . . Homero Blancas was named on the ballots of 38 of the 44 golf writers participating in the voting . . . Canadian Stan Leonard and Joe Campbell, each polled 24 votes . . . Behind the leaders in order were Bert Yancey, Gardner Dickinson, Billy Martindale, E. J. (Dutch) Harrison, Kermit Zarley, Gordon Jones, and Ramon Sota of Spain. . . Fred Hawkins and Frank Stranahan were selected as alternates.

Golf clubs belonging to Judy Torluemke were stolen from Beverly CC (Chicago, Ill.) clubhouse during the evening of the final round of the Women's Western Open . . . The Western Open will be played at the Medinah (Ill.) CC in 1966 . . . Crestview CC in Wichita, Kan. is giving up its present course in order to facilitate the expansion of the Wichita State University and has purchased a new location of 638 acres on which a 27-hole course will be built . . . The second annual pro-am Sunshine Invitational tourney will be held at Runaway Bay GC, Jamaica, W. I., Dec. 4-10, 1965.

Chlorine gas that escaped from a tank and was fanned across the pool area by the wind resulted in the brief hospitalization of 28 children who were swimming at Rochelle (Ill.) CC in mid-July . . . The kids were able to scramble out of the pool on their own and were rushed to a local



Not proud of his 41 for the first nine in the recent fifth annual March AFB Celebrity tournament, Bob Hope tried to sneak out with his scorecard. But you can't do that in this computer age. The Bruning copier machine lit up and screeched and Hope had to produce the evidence. His score was then copied and posted for 5,000 people to comment about.

hospital where oxygen therapy was administered . . . The chlorine tank had just been installed in a pumphouse and a valve was left open in the process, permitting the gas to escape . . . Castle Harbour Golf, Beach and Yacht Club will hold its third annual Pro-Am, Nov. 28-Dec. 4 . . . At least 25 teams are expected to enter.

Kathy Whitworth, leading money winner on the Ladies PGA circuit, has the low 18-hole score for the season — a 66 she shot in the St. Petersburg Open . . . Kathy also claims the low winning 54-hole score, a 210 in the Shreveport Kiwanis Open, and low winning 72-hole score, a 281 in the St. Petersburg . . . Fifteen women players had shot 33 rounds in the 60s through mid-July . . . Miss Whitworth's average for the first 17 tournaments was 72.76, compiled in 51 rounds . . . That gave her a .34 stroke per round edge over Mickey Wright, who quit the tour in early July to enroll at Southern Methodist University.

The county court at Independence, Mo. has approved rezoning requests for construction of a shopping center and golf course by R. D. Choplin and John S. Davis . . . A 14-hole miniature course, 400 feet long, and arranged so wheel chair and convalescent patients with breathing difficulties may use it, has been planned for patients at Weimar (Calif.) Medical Center . . . Many local civic and

# MILORGANITE WORTH 10% MORE!

The Nitrogen Content of MILORGANITE is guaranteed to be 6%\* — an increase of 10% over the previous guarantee — at NO Increase in Price . . . yet it's worth 10% more!



\*In the past year, the Nitrogen Content of MILORGANITE has exceeded 6½% on many occasions.

Customers who purchase MILORGANITE in carload lots also benefit through seasonal discounts of \$1.00, \$2.00 and \$3.00 per ton, depending on when purchased. Ask your MILORGANITE Distributor for details.

These discounts are absorbed in savings on overtime labor — savings passed on to you . . . a valued MILORGANITE customer!

If you want the benefit of these Seasonal Savings, place your order early as distributors are limited by monthly quotas.

THE SEWERAGE COMMISSION  
P.O. Box 2079  
Milwaukee, Wis. 53201

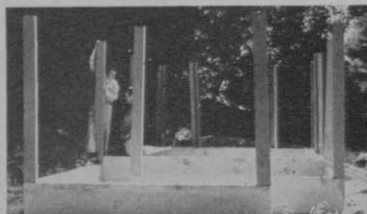
**MILORGANITE**  
The NATURAL ORGANIC FERTILIZER

Delivery to Complete Building in

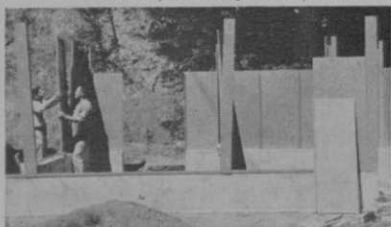
# 72 HOURS!



Each part is tagged and coded



Corner posts being set in position



Coded panels being set in place



Installing main roof beam



Completed and Painted Comfort Station

## Vandal Proof!

Unbreakable cast aluminum fixtures, heavy gauge steel construction insure long life, maintenance-free operation!

**SUPER SECUR COMFORT STATIONS**  
778 BURLWAY ROAD • BURLINGAME, CALIF.



George Jacobus (r), who is shown with Al Dark, Chicago Cub coach, died July 22 at the age of 68 in Park Ridge, N.J. President of the PGA from 1933 to 1939, George founded the National Baseball Players' golf tournament and was active in its promotion through this year. He was pro at Ridgewood (N.J.) CC from 1918 until his death.

fraternal groups along with businesses and unions are donating time, labor and money to the project.

Kent State University has taken an option to buy the Meadowview GC, Ravenna, O. . . . A National Golf Foundation survey has listed two possible sites for development of a nine-hole municipal course in Elmhurst, Ill. . . . Mohawk Trails GC has recently opened its nine as a public course near Mt. Jackson, Pa. . . . Ange Cimini is pro of the 3198-yard layout . . . An 18-hole miniature course was recently opened near St. Croix Falls, Wis. . . . A group of businessmen have purchased land near Hendersonville, N.C. for development of a 100-acre course surrounded by homesites . . . A residence on the property will be converted for use as a clubhouse.

The Sherwood Forest CC, Gagetown, Mich., has the first nine holes of its course open and the clubhouse constructed . . . Members come from as far away as Detroit and Toledo, O. . . . Preliminary plans have been approved for a new municipal course on the northern limits of the city of Ann Arbor, Mich., by the city council . . . July 1966 will see the opening of the new 9-hole public course at Painesville, O., if the plans approved by the city council develop as anticipated.

**Superintendents say — "We need a fairway Verti-Groove machine that cleans as it**

The masters of renovation



**renovates." The Master Verti-Groove with Catch-Master does both — at the same time. And it takes only one man to do it.**

As part of West Point's "formula for fall"— all West Point Equipment designed for one man to do a complete job better—faster. Write for full information

**WEST POINT PRODUCTS CORPORATION**

**West Point, Pa.**

Thomas W. Moore, pro at The Dallas, Tex. Stevens Park course, was honored recently with a 40-year service pin from the city . . . Mayor **Erik Jonsson** made the presentation . . . The Stanwich Club in Greenwich, Conn., formed by a group of prominent residents, is in full operation . . . Course architect was **William Gordon** . . . Head pro at Greenwich is **Billy Farrell**, son of **John Farrell**.

Port Charlotte, Fla. is the site of a new proposed country club . . . **Vasco Peebles**, the head of the group planning the club, says that enough memberships have been sold so that construction can be started . . . The PGA Seniors of Florida will hold its first annual championship and outing at the PGA National GC on Oct. 2-5 . . . Baldock Pacific Properties will build an 18-hole, par 70 course in Castro Valley, about 15 miles east of Oakland, Calif.

The city of Elgin, Ill. plans to purchase land from the Elgin State Hospital for use of a Junior college and to build a municipal course . . . The new clubhouse at the Whaling City CC, formerly the

Municipal Links, New Bedford, Mass., will be completed by Labor Day weekend . . . Cost of the clubhouse is estimated at \$30,000 . . . A September opening of Muskogee, Okla.'s. newest public course, La Tierra Bonita (The Pretty Earth) is planned . . . Owner is **Art Lopez**, who is also building the 9-hole, par 36 course . . . **Bob James** is supt. and Lopez will serve as club pro . . . 80 acres of farmland near Troy, Mich. have been purchased by a group of local investors for a shopping center and apartment complex that will include a 9-hole course.

Australian pro, **Colin Campbell**, is teaching golf aboard the Matson Line's Monterey sailing from California to the South Seas . . . A 9-hole Par 3 has been opened at the rental retirement community of Leisure Life Village in San Diego, Calif. . . . **Everett Comstock** is supt. and **Herschel Ross** is the pro at the new Shambole CC, west of Petersburg, Ill. . . . The Baiting Hollow CC, Riverhead, N. Y. recently opened its 6920-yard course . . . Club manager is **Thomas J. McBride** . . .



**SOFTOUCH Golfsocks and Golfpeds**  
 put a sock into golf! Perfect fit . . . outstanding  
 comfort . . . latest designs and colors . . .  
 footloose freedom and fairway flair!

Over 60 Styles . . . for Men and Women  
 Tops in Quality and Action-Priced!

. . . At Pro Shops Exclusively!

**STATES HAND KNIT CRAFTS**

*Creators and Designers Since 1913*

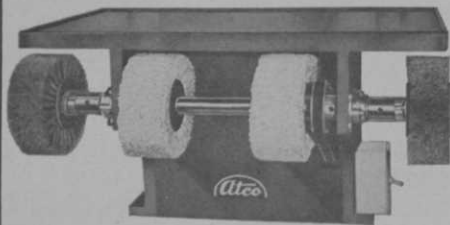
303 Fifth Avenue, New York, N. Y. 10016

*Send for our new color catalog*

## MORE SERVICE & PROFIT IN THE LOCKER ROOM

with

Complete Shoe Cleaning/Shine Bar\*



- \* Anyone can operate
- \* Handles shoes, bags, all leather items . . . and all colors
- \* 5 times faster service than hand work

Write for full information direct to:

**ADVANCE TOOL CO.**

P.O. Box 25394, Los Angeles, Calif. 90025

Saline, Mich. is the site of a new 9-hole Brookside course opened in July . . . owners and operators are Mr. and Mrs. Howard Burr.

Fred Stiver is building a course near Schoolcraft, Mich. . . . The old Fox and Beers mill on the course is being remodeled for a clubhouse, leaving the old water-wheel and some of the features intact for atmosphere . . . A new semi-private course called Creek Bend GC began operations near Chattanooga, Tenn. in July . . . L. B. Austin III designed the 2750 to 3100-yard course with a par of 34 for nine holes. . . The back nine is under construction, with a 1966 opening planned . . . Lawrence Jones is course manager.

Hal Purdy has submitted plans for an 18-hole course at Orange County (N. Y.) Park for members of the park commission . . . There is no timetable for development of the course . . . It's common to hear about unusual hazards . . . And the alligator isn't considered so unusual in some places . . . Sea Pines course at Hilton Head Island, S.C. has signs on all of its water holes reading, "Don't molest the alligators."

At the U. S. Women's Open held at the Atlantic City (N. J.) CC, Louise Suggs was putting on the fourth green when she spotted a snapping turtle marching across the green . . . Needless-to-say she ended up needing three to get down from 29 feet . . . The turtle had slipped out of the adjoining marshes to escape the high tide . . . Indian Lakes CC, two new 36-hole, par 72, 18-hole courses, (suburban Chicago) has been opened for play . . . Cal-Turf, Camarillo, Calif., is holding a number of field days for landscape architects, supts., and others interested in turf.

Salt Lake, (actually a fresh water lake) located three miles from downtown Honolulu, is slated to become a unique 27-hole country club course . . . Plans for the \$1.8 million layout on filled-in land, and multi-million dollar, 1500 lot apartment-residence development are underway . . . Bob Baldock & Son are architects . . . The U. S. National Senior Open Golf Assn. and the Dunes Hotel & CC, Las Vegas, Nev.,

**EXCLUSIVE**  
**POLY K LAD**  
**PLATES**  
*make the*  
*difference in the*



**KARGO**  
**GOLF CAR**  
**BATTERY**

An entirely new process, the only major advance in internal battery design during the last decade, encases the plates in a protective polyethylene jacket that provides superior performance in every Kargo Sure Drive battery. This new, exclusive method cushions the plates from shock and because no plate edges are exposed, the danger of internal shorts is eliminated completely. The Kargo battery with "Poly-Klad" protection will out-perform any conventional type battery because it is especially designed for rugged service under severe conditions.

For full information write:  
**PRICE BATTERY**  
**CORPORATION\***

Kargo Golf Car Battery Div.  
 Hamburg, Pa.

\* MEMBER, AMERICAN GOLF CAR MANUFACTURERS ASSN.

VISIT THE PRICE BATTERY EXHIBIT  
 AT THE NEW YORK WORLD'S FAIR  
 (Better Living Building,  
 Automotive After-Market Exposition)



Pro Gervis McGraw is shown getting warmed up in front of a bank of cutout Little Indians in preparation for the fourth annual Cherokee Strip golf classic that will be played at his club, Ponca City (Okla.) CC, Sept. 10-11. Proceeds are turned over to the Kay County council for retarded children. Many top pros and celebrities will be in the Cherokee Strip field of 200.

are sponsoring the ninth annual U.S. National Senior Open at Las Vegas, Sept. 22-26 on the Dunes and Tropicana Hotel courses.

Work is underway on the Reames G & CC, Klamath Falls, Ore., according to Andy Hoilan, supt. . . . Bob Baldock & Son are architects . . . Work is to be completed by next year . . . The Atlanta (Ga.) CC on 972 acres will be opening its 18-hole course and \$500,000 clubhouse this fall . . . Willard C. Byrd and Associates of Atlanta are architects, with Joe Finger as consulting architect.

The second nine of the Fort Morgan (Colo.) GC were opened recently . . . The yardage is 3,338 with a par of 37 . . . Crest Ridge Golf Center — with a driving range to begin — will add a miniature course in 1966 and a 9-hole Par 3 in 1967 to its Patton, Pa. facilities . . . Owner is E. W. Strittmatter and sons . . . The Western Hills area of Cincinnati, O. has a new 18-hole municipal course, Neuman GC, that was opened recently . . . Pro is Hank Wilms and supt. is Pat Russell . . . Washington township (Romeo, Mich.) has granted permission to Earl C. Johnson to build a 9-hole course on 40 acres of land.

Pat Patterson is new manager of the Payson (Ariz.) CC . . . The Beaver Meadows Golf and Recreation Assn. recently received a \$250,000 loan, backed by the FHA, to construct an 18-hole course,

Use CLARO Non-Slip  
for a **BETTER GRIP**  
**...BETTER GOLF!**



CLARO Non-Slip —  
assures a better grip  
in any weather. Gives  
you greater accuracy  
—more distance when

you need it. One application lasts all day.  
Take a stroke or more off your score with  
CLARO Non-Slip. Fifty cents at your pro  
shop.

**CLARO NON-SLIP**

for golfers



CLARO LABS., 419 W. Ewing Ave., South Bend 14, Ind.

**SEND FOR THIS!**

**KEN  
Shop  
Supply  
Order  
Blank**

More than an  
order form,  
it's really a  
catalog listing  
everything you  
need for your  
repair shop,  
including:

All Ellingham tools, stains, lacquers, adhesives, golf club scales, grips, listing, whipping shafts, collars, plugs sheathing, buffing and cleaning supplies. Write for your copy TODAY!

Write for handy SHOP SUPPLY LIST



**Kenneth Smith  
GOLF CLUBS**

*Hand-made to fit You*

*World's Largest Custom Club Maker*

Box 41-GM, Kansas City Mo., U.S.A.



clubhouse and pool in Oswego county, N. Y. . . . Construction has begun and is expected to be completed in Oct. . . . Richland Greens GC's new nine at Windber, Pa. is under construction, with seeding planned for mid-August . . . It should be ready for play in 1966.

Bernard Hotchkin of Grinnell, Ia. has opened an 18-hole miniature course, with his daughter, Larita, as manager . . . An area of the vast Calif. Bishop Ranch, west of Santa Barbara is being developed . . . Called University Village, it will feature homesites, a shopping center and a course, which is currently under construction and should be ready for play in the spring . . . Forty guest lodges surrounding La Costa CC in San Diego, Calif. have been completed, according to Eddie Susalla, executive director . . . Suffolk (Va.) GC will soon be doubled in size to a standard 18 holes . . . Russell Breeden is architect.

Penfield (N. Y.) CC has opened its second nine and made a new addition to its clubhouse in recent weeks . . . The new nine is 3,258 yards with a par of 36 . . . Pro Dean Lind of the Ledges CC, Beloit, Wis., says that construction on a new clubhouse will begin shortly . . . Supt. Harvey Krahn, who supervised course construction to design of Edward Lawrence Packard, says the 6,675-yard course is in great shape . . . Homesites surround the Ledges and persons who purchase them are automatically charter members of the club.

James and Ronald McKenna are building an 18-hole miniature course in Cromwell, Conn. . . . Work is underway on building an additional nine holes at the Frasch GC in Sulphur, La. . . . Joseph London and Donald Krause have opened a new 9-hole course built completely around their chip-and-putt course at Ackermanville, Penn. . . . The new course has a par 34 and is 2562 yards long . . . The chip-and-putt continues in operation . . . Work underway on a new clubhouse at the Lancaster CC, Depew, N. Y., replacing one that was destroyed by fire . . . Groundbreaking ceremonies have been held for the course at Columbia, Md., a new 15,000-acre city in Howard county, which is currently being developed.

Among the winners at the national



Pee Wee golf championships held in late June at Orlando, Fla. were **Tom Jennette**, 15, of Pensacola, Fla., winner of the 13-15 age category . . . Champion of the girls 13-15 age group was **Tammy Sue Bowman**, 14, of Jacksonville, Fla.; **Mike San Filippo**, 12, of Miami and **Paula Eger**, 12, of Kirkwood, Mo. were winners of the boys and girls age 10 to 12 competition . . . Other age categories were 8-9, 6-7, 3-5 . . . **Sara Welsch** 14, Barcelona, Venezuela and **Andrew McConnell**, 7, of Bournemouth, England, first in the boys 7-8 group, were the only non-U. S. contestants.

More than 1600 boys played 18 holes at stroke play on July 19 or 20 at 53 sites around the country to determine the 150 qualifiers for the 18th Junior Amateur championship of the USGA . . . **Paul McGowan** won the N. J. state amateur, played at the Plainfield (N. J.) CC, over **Jim Torres** . . . McGowan is an internal revenue agent and Torres, a Newark cop.

Tacoma C & GC, site of the recent 64th Pacific Northwest GA mens' championship, was founded in 1894 and claims to be the second oldest golf club west of the Mississippi . . . It has lost two clubhouses to fire — in 1910 and 1961 — and its present clubhouse was completed last December . . . A young pin oak, planted on the Hill of Fame at Oak Hill CC in Rochester, N.Y., was dedicated to **Clarence W. (Gus) Benedict**, USGA president, in July . . . If 21-year old **Jim Wiechers**, the amateur who shot 277 in the Western Open for an eighth place tie, had been enrolled as a pro he would have received \$2,050 . . . He was paired with **Chi Chi Rodriguez** in the third round and played before a gallery of 3,000 . . . But all those people didn't faze him . . . He shot a 67, the same as Chi Chi . . . In this year's National Collegiate, Wiechers was runnerup to **Marty Fleckman** of the University of Houston.

An association of Ohio Par 3 courses operators will be formed this fall, according to **Karl Kushin**, pro at Imperial GC, Mansfield . . . The group will attempt to enlist all Par 3 courses in the state in a promotional campaign and make plans for holding an annual Par 3 state tournament.



**GOLF RANGES  
PAR THREE  
GOLF COURSES  
MINIATURE COURSES**

## TOP QUALITY GOLF SUPPLIES

*It pays to play with Eastern golf equipment! Balls, clubs, mats, tees, ball washers, markers, retrievers, pails, ball pickers, obstacles, etc.*

SEND FOR LATEST CATALOG

## EASTERN GOLF CO.

2537 BOSTON ROAD  
BRONX, N. Y. 10467, Dept. A



Member: American Society of  
Golf Course Architects



11 South LaGrange Rd., LaGrange, Ill.  
Telephone—Area Code (312) 352-2113

## The Cottage Gardens, Inc.



Nick I. W. Kriek  
Harold E. Hicks

Wholesale Growers of

**SHADE AND ORNAMENTAL TREES  
SHRUBS — EVERGREENS**

Write for complete wholesale catalogue—G  
2707 W. St. Joseph St., Lansing, Mich. 48917  
Tel: Area Code 517, 482-9021, 482-9276

Check P. 103 for Your Clubhouse,  
Pro Shop, Maintenance Needs

**GOLF COURSE CONSTRUCTION**

the **wadsworth** company

708 PLAINFIELD ROAD, DOWNERS GROVE, ILLINOIS  
TELEPHONE: WOODLAND 8-2355

**GEORGE FAZIO**  
**GOLF COURSE ARCHITECT**

P. O. Box 153  
Flourtown, Pennsylvania  
Tel. 215 242-1330

**RALPH PLUMMER**  
**GOLF COURSE ARCHITECT**

*Member, American Society  
of Golf Course Architects*

6455 Woodstock Road  
Fort Worth, Texas 76116  
Pershing 8-4215

**ROBERT E. THOMASON**  
**GOLF COURSE DESIGN AND  
CONSTRUCTION**

Box 41  
Morristown, Tennessee  
Phone: 586-1667

Walter Hagen, doctors report, is in "satisfactory" condition following trachea surgery at St. Vincent's hospital, New York City . . . The Haig had been taking cobalt treatments prior to an operation for throat cancer . . . He is philosophical about the deal and in characteristic high spirits.

Robert Smith, president, golf equipment group of the Victor-Comptometer Corp., manufacturers of PGA equipment, Worthington balls, other playing equipment and Victor cars, is convalescing after having an attack similar to that suffered by President Eisenhower . . . Charles Bartlett, Chicago Tribune Golf writer and secretary, Golf Writers Assn. of America, is in Passavant hospital, Chicago, having disc injury repaired.

While we were talking about Gary Player's gift of National Open prize money to Junior golf promotion and the Cancer Fund a pro reminded us that when Al Besselink won the 1952 Tournament of Champions he gave \$10,000 of his prize money to the Cancer Fund . . . Tigers in the Green Felt Jungle chawed up the rest of Bessie's prize money during the night . . . Gov. Burns of Hawaii is talking about building another public course on Oahu, the island where Honolulu is located . . . Lehigh Acres (Fla.) CC is to build second 18 to plans of Mark Mahannah.

Frank Cormaci, pro at Meadowlark GC, Long Beach, Calif., a club owned by Gomer Sims and Cece Hollingsworth, does a helpful job for Meadowlark players with the concise golf lessons he writes for the Meadowlark Men's Club News.

**ROBERT A. SIMMONS**  
**GOLF COURSE ARCHITECT**

P. O. BOX 1023  
KOKOMO, INDIANA  
PHONES: CL 2-8449 • GL 7-3903