



Rogers
-POWER-AERATOR-
ROGERS MFG. CO., INC. OLATHE, KANSAS

MODEL 580

- POWER AERATE
- REMOVE THATCH
- RELIEVE COMPACTION
 - PREPARE SEED BED
- SMOOTH ROUGH AREAS
 - DRAIN LOW AREAS
 - HARVEST STOLENS

STIMULATES

NEW GROWTH

ADJUSTABLE BLADE — 0 - 3-1/2"
 ANY GROUND CONDITION

ROGERS "Z" Bar Action *Bar Action* **ALLOWS**
POWER-AERATOR TO FOLLOW GROUND CONTOUR



Rogers
-AERO-BLADE-
ROGERS MFG. CO., INC. OLATHE, KS

MODEL 509

STIMULATES NEW GROWTH

VERTICAL SLICING

FOR GREENS

0 to 2"

- Relieve Compaction
- Aerate - Spike
- Remove Thatch

Self-Propelled

Rogers
SWEeper
ROGERS MFG. CO., INC. OLATHE, KS

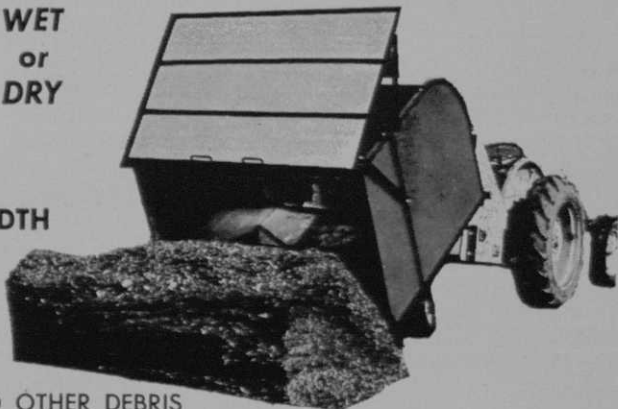
WET
 or
DRY

MODEL 720

5 CU. YD. HOPPER
5 FT. SWEEPING WIDTH

Sweeps

ROCKS, PAPERS,
 GRASS CLIPPINGS,
 LEAVES, BOTTLES,
 BRANCHES, CANS, AND OTHER DEBRIS



ONE MAN OPERATION

3 POINT HITCH ACTIVATES SELF DUMPING HOPPER

ROGERS MANUFACTURING CO., INC.

202 N. MAHAFFIE ST., OLATHE, KANSAS 66061 ● PHONE: 913 764 1615 or 913 782 0831

A HOLE IN ONE FOR THE GREENS KEEPER

ONE PRODUCT does the work of four or more strokes of golf course maintenance work. F-O-U-R!

Cascade Soil-Aid is a precomposted, finely-ground and nitrogen-processed forest bark. It has FOUR inherent advantages over most soil conditioners. (1) It's ready to apply—no preparation! This cuts your application costs. (2) Nitrogen processing and composting means that it will not draw out existing supplies of nitrogen, as most inert conditioners do. (3) Bark texture insulates against both extremes in temperature and even acts as a cushion in heavy traffic areas. (4) Porous qualities absorb and hold moisture up around thirsty roots, thus saving water.

Saves application time NOW... saves maintenance work later.

FOR PRODUCT INFORMATION & FREE SAMPLE CONTACT...

BOISE CASCADE WOOD PRODUCTS DIVISION

P. O. Box 200, Boise, Idaho 83701



(Cincinnati, O. area) . . . **Bob Hessler** replaces **Holstein** as assistant at **Coldstream**.

New at pro locations this year: **Jim Silvey** at **Skyline CC**, **Tuscon** . . . **Art Brown** as pro-manager, **Forty-Niner CC**, **Tuscon** . . . **Brown** switched from **Rolling Hills CC** in **Tuscon** . . . **George Clark** goes from **El Paso, Tex.**, to **Midland (Tex.) CC** . . . **Ralph Sutton** moves from **Rio Grande Estates CC**, **Belen, N.M.** to **Alamogordo (N.M.) CC** . . . **Jim Chapman**, another of **Warren Orlick's** assistants at **Tam o'Shanter CC**, **Orchard Lake, Mich.**, graduates into pro job at **Chagrin Valley CC**, **Chagrin Falls, O.** . . . Another assistant to a veteran pro promoted as **Jay Burry** has left **Bob Watson**, pro at **Wykagyl CC**, **New Rochelle, N.Y.**, to take job at **Cold Spring CC**, **Cold Spring Harborn, N.Y.**

Dan Harris now pro at **Essex CC**, **Manchester, Mass.** . . . **Jack Isaacs** now pro at **Willow Oaks CC**, **Richmond, Va.** . . . **Tom Kernan** moves to pro job at **Cedar Point Club**, **Crittenden, Va.** . . . **John Eberhardt** takes over as **Shady Hollow CC**, **Massillon, O.**, pro . . . **Don Spears** goes to **Silver Lake CC**, **Cuyahoga Falls,**

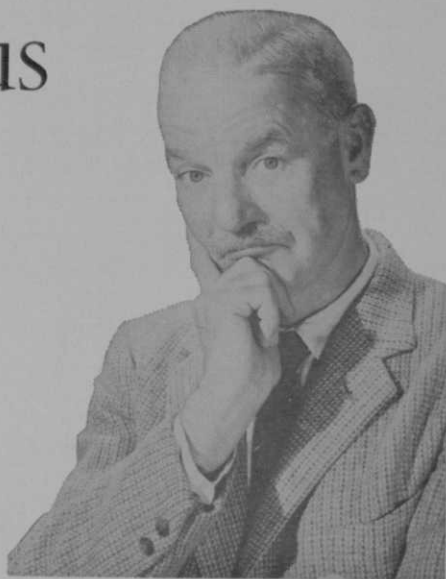
O., as pro from **Walnut Hills GC**, **Columbus, O.** . . . **Bill Brunsmann** succeeds **Bill Meyer, Jr.**, as pro at **Owl Creek CC**, **Anchorage, Ky.**

Robert Kidd now pro at **White Manor CC**, **Malvern, Pa.**, succeeding **John Beadle**, who retired . . . **Kidd** moved from **Elmhurst CC** in **Moscow, Pa.** . . . **Roger Ginsberg** now pro at **Middle Bay CC**, **Oceanside, L.I., N.Y.** . . . He follows **Mike Krak**, now pro at **Wee Burn CC**, **Darien, Conn.**

Bert Weaver is the 26th qualifier for the 13th annual **Desert Inn Tournament of Champions**, **April 29-May 2** . . . **General Brewing Corp.** has authorized the **Lucky International Tourney** to schedule the event again for 1966 as part of the **PGA tour** . . . **New York City's 11 municipal courses** were scheduled to open on **Mar. 27.**

Patty Berg, **Paul Hahn** and **Vic Ghezzi** were principal performers at the third annual **N. J. PGA Golf Show** at **Westmont CC**, **West Peterson, N. J.**, on **March 25** . . . **Jack Nicklaus** isn't carrying his little black book these days to jot down yardage

Be Suspicious



Make sure you see it on the label.

If you don't, call your supplier.

You have a right to be insistent.

You can't be sure of the results unless you see PMAS
right on the label . . . right on the package.

Don't be taken in by, "It's the same thing."

If it is, why doesn't it say so?

You're entitled to PMAS and other Cleary Products for Better Turf.

Get them.


P M A S Spotrete Caddy Thimer MCPP Methar (DSMA)

Super Methar (AMA) AMA plus 2,4-D MCCP PM2,4-D

25% Granular Chlordane



New Brunswick, New Jersey
Skokie, Ill. Belleville, Ont., Canada



WINTER INJURY and SNOW MOLD

...have one thing in common

THEY ARE MORE SEVERE IN
AREAS OF POOR DRAINAGE

AQUA-GRO

...moves excess water out,
prevents overly wet areas
that encourage snow mold
and winter injury

•
make

AQUA-GRO

*a part of
your fall program*

NOW!

•
AQUATROLS CORPORATION of AMERICA
217 ATLANTIC AVE., CAMDEN, N. J. 08104



and landmarks on the courses he plays . . . Probably doesn't need it after three times around the circuit.

A 9-hole public pitch-and-putt course, adjoining the regulation municipal Galloping Hill Course in Rahway, N. J., is scheduled to open this spring . . . Architect **Gerald C. Roby** is designing the 18-hole privately-owned course that will be build starting in April (to open in Sept.) at Winterton, N. Y. . . . The course will be on top of the Shawangunk Mt. range . . . It has an elevation of 1,370 feet and views that extend 100 miles to the Berkshire in Conn. to the northeast and a view to the southwest of the mountains in Sussex county N. J.

J. Porter Gibson is designing the 18-hole public course on Lake Norman (near Denver, N. C.), that is scheduled to be ready in Sept. or Oct. . . . An 18-hole course near Tirzah, S. C., planned by some employees of Douglas Aircraft, is chartered as Carolina Downs GC . . . Clearing of the land has begun.

Overeager golfers have damaged greens at the Hyde Park municipal course and thus have delayed the opening of the course, according to **Mario Pirastru**, Niagara Falls, N. Y. deputy director of parks . . . Damage amounting to an estimated \$330 was caused by vandals at the Stanley municipal course in New Britain, Conn., says **Paul Ryiz**, assistant director of parks.

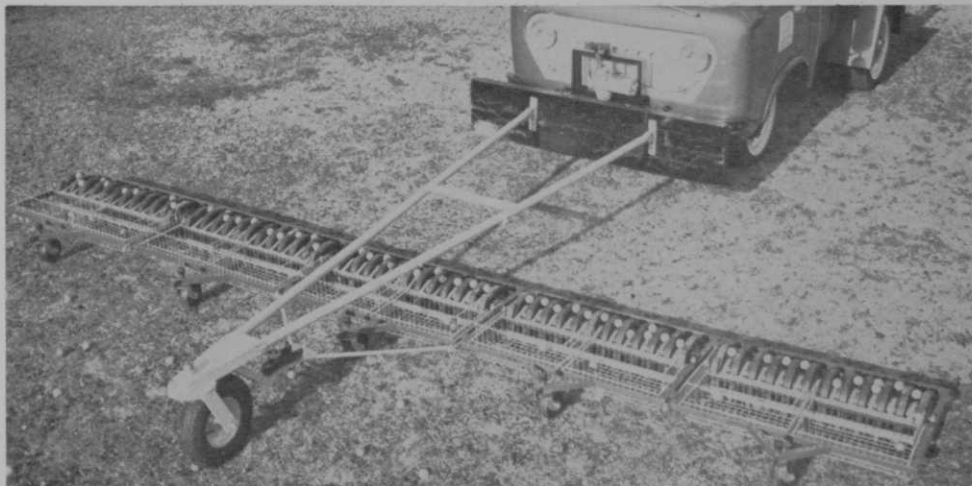
World Golf Council, representing amateur ruling bodies in every country in which golf is played, unanimously voted against having golf in Olympic and Pan American games . . . Olympic Games haven't been as efficiently run as the international amateur golf competitions have been . . . World Golf Council accepted invitation of Mexico to be host to 1966 Eisenhower Trophy international amateur team match competition.

Erie County (Pa.) Recreation Board has decided not to include a proposed 9-hole course in Corry, Pa. with its 1965 projects . . . A first for any Chamber of Commerce would be achieved by the Warren (O.) area chamber if its plans are approved by local zoning authorities . . . The group plans to build and operate an 18-hole course across from the site of its present leased-



Bring 'em back with a

BAILEY GOLF BALL PICKER



QUICKEST WAY TO GATHER GOLF BALLS

Get the job done fast, thoroughly and economically with the dependable Bailey Golf Ball Picker. It's rugged! It's powerful! It's easy on balls and turf! Whatever the ground condition there is a model to sweep it clean. Roller Model for grassy, level terrain. Wheel Model for rugged, uneven surfaces.

CHECK THESE FEATURES

- Interchangeable 44" units
- Two baskets in each unit hold 600 balls
- Easy to assemble in two or more units
- Additional units can be added as needed
- Senior Picker in regulation size of 3 units covers 11 feet
- Junior Picker of 2 units covers 7' 4"
- Complete with pulling hitch.
- For best results we recommend A-frame.



WHEEL MODEL



ROLLER MODEL

MAIL THIS COUPON

I'm interested in the following model:

Roller Model Wheel Model

Also send free catalog

Name _____

Club _____

Address _____

City _____ State _____ Zip # _____

Dept. A

SEND FOR LATEST CATALOG

EASTERN GOLF CO.

2537 BOSTON ROAD

BRONX, N. Y. 10467

36th year of service to the golf industry

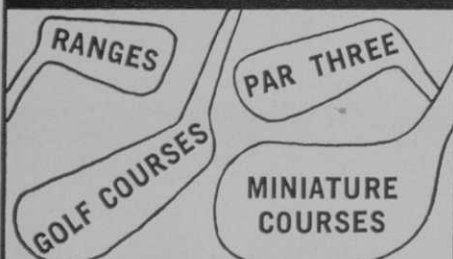


SPORTS AWARDS COMPANY

4351 Milwaukee Avenue
Chicago, Illinois 60641
Area Code 312 - 282-8060

Full discount to professionals.
When in town, visit our new factory
showrooms. Write for catalog.

TOP QUALITY GOLF SUPPLIES



It pays to play with Eastern golf equipment! Balls, clubs, mats, tees, ball washes, markers, retrievers, pails, ball pickers, obstacles, etc.

SEND FOR LATEST CATALOG

EASTERN GOLF CO.

2537 BOSTON ROAD
BRONX, N. Y. 10467, Dept. A

property, the Avalon GC . . . **Chuck Congdon**, 55, one of the Northwest's best-known pros, died in late Feb. of a heart attack . . . He won the national Seniors Open in 1960 . . . Branch River CC (Manitowoc, Wis.) has **Bob Swift** as new pro.

Singleton Irrigation Systems installed irrigation systems at a number of clubs last year . . . Among them were Dellwood CC in New York City, N. Y., Manor CC in Norbeck, Md., and Derryfield municipal GC in Manchester, N. H. . . . A multi-hotel and apartment development by **Chin Ho**, developer, will be built at the site of an 18-hole course now being developed at Makaha in the Hawaiian Islands.

Jack Nicklaus has signed a contract to represent the Mauna Kea Beach (Hawaii) GC for \$20,000 per year for the next four years . . . **Dan Pulz** of Greensburg, Pa. is captain of the 1965 Lehigh University

CUSTOM MADE WOODS

#1 THRU #15

CUSTOM MADE PUTTERS

Including Famous "WON-PUTT" & "PRO'S OWN"

Repairs-Any Make Club

Fast Service—Reasonable Prices

Write for Catalogue and Price List.



Looking for a job,
club to buy, golf
cars to recondition?
See GOLFDOM'S
Classified Ads. P. 165
They Bring Results

Bert Dargie GOLF CO., INC.

3030 SUMMER AVENUE • MEMPHIS, TENN. 38112
PHONE 324-4688 AREA CODE 901

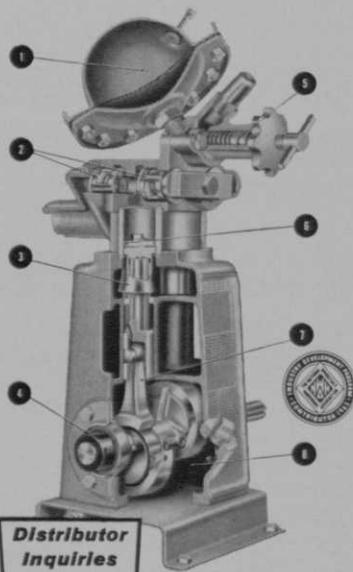


IN POWER SPRAYERS THE BIG PERFORMER IS

Root-Lowell DURAPOW^{ER}

with all new 5 or 10 GPM DURACYL[®] PUMP

Get better results from all sprayable materials with Durapower. Tops for any gun or boom application. Fourteen models wheel or skid mounted, 50 through 300 gallons. Choice of 5 or 10 GPM pump with constant discharge at pressures to 400 lbs. P.S.I. WRITE FOR FREE BROCHURE "FACTS AND FIGURES" including calibration, conversion and field application data.



DURACYL PUMP FEATURES:

1. New pre-pressurized accumulator
2. Finest valve assemblies
3. Leak-proof piston shield
4. Extra heavy ball bearings
5. Precision pressure regulator
6. Diamond-hard ceramic cylinders
7. Heavy-duty bearings & rods
8. Continuous oil-splash lubrication

**Distributor
Inquiries
Invited**

Mail Today →

* Trademark

ROOT-LOWELL CORPORATION
Division of Root-Lowell Mfg. Co.
Lowell, Michigan 49331

ROOT-LOWELL CORPORATION,

Lowell, Michigan 49331, Dept. GD.

Please send me free brochure "Facts and Figures"

Name _____

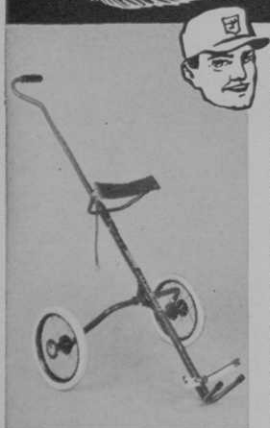
Address _____

City _____ State _____

Zip Code _____

\$600 GAIN

in cart rentals in
just two years with
STOWAWAY RENTAL CARTS



Pro says... "Club members appreciate a lighter, easier-to-handle cart. My rentals rose from \$800 in 1961, with a different cart, to \$1300 in 1962 and \$1400 in 1963, with STOWAWAY Carts."*

You can increase your rental profits with this popular, sturdy, feather-weight cart built to withstand the rugged wear necessary in rental use. Designed for the golfer's pleasure and your profit. Write today for descriptive literature and prices.

SPORTS INTERNATIONAL
1225 SECOND AVENUE • OAKLAND, CALIFORNIA
*Professional's name upon request

Sales Representatives: Desirable territories available.



Immediately before or immediately after this photo was taken, Norman Johnson, supt. at Fort Myers (Fla.) CC, may have been worrying about sod webworm or cottony blight, but there is no sign of a frown here. Norm is being thanked by Mrs. John B. Ewseychik (l) and Mrs. Bud Schwarz for having split costs with A! Patterson, Fort Myers pro, in staging a tournament for women members.

NEW COMPLETELY AUTOMATIC PERMA TURF GOLF TEE

- Exclusive patented nylon brush mat hitting surface for woods and irons in 6 interchangeable sections for longer wear.
- Golf balls automatically teed from hopper. No stooping or bending. No levers, switches, pedals or electricity. Completely self-contained for wood and iron shots.
- No installation problem. Tee sits flat on ground or concrete, moves easily from place to place.
- Perma-Turf Automatic Golf Tee is patented, guaranteed, weatherized.

**LOW PRICE
IMMEDIATE DELIVERY**

Write for complete information and prices
PERMA-TURF COMPANY

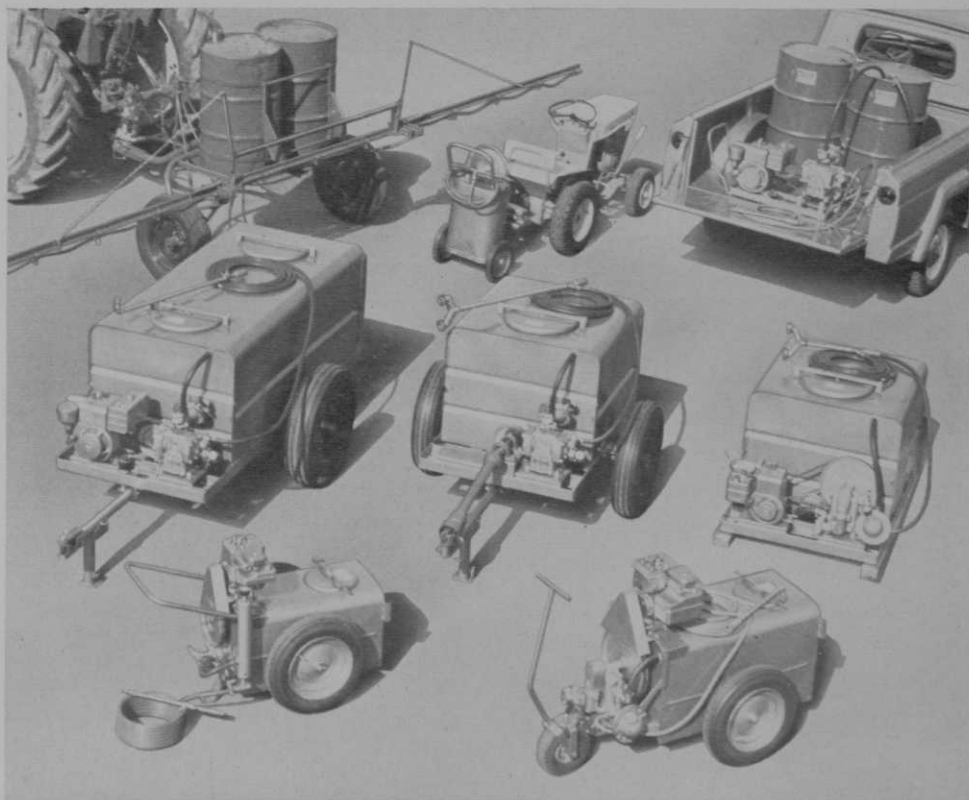
3901 - 83rd Street
Des Moines, Iowa 50322

golf team . . . National Pee Wee Golf Championships to be held in Orlando, Fla., June 29-30 . . . Sponsors of the tourney are the Orlando Chamber of Commerce and Minute Maid Co.

The new \$130,000 Nashawtuc CC (Concord, Mass.) clubhouse to be formerly dedicated on May 1 . . . Crystal Lake (Fla.) CC opened its new clubhouse as the recreational headquarters for the development of condominium and cooperative apartment structures . . . Second nine will open sometime in April at Santa Rosa, Calif's. Oakmont GC.

A community center, with a library, will serve as a golfers' clubhouse for the new Bobby Nichols public GC at Waverly Hills Park in Louisville, Ky. . . . Mr. and Mrs. David D. Carey are managing Riverside GC (Grand Island, Neb.) . . . Installation of a new irrigation system for 11 of the 18 holes and fairways at Weeks Park municipal course (Wichita Falls, Tex.) is expected to be completed this summer.

Construction has begun on the \$42,000 expansion of the West Plains (Mo.) CC



Pick your next sprayer here

What do you look for in a power sprayer?

Size and output? Hudson has them in a full range from 10 to 300 gallons. 1½ to 10 gpm. Pressures up to 400 pounds psi.

Dependability? Hudson sprayers are built to last. Like Ten-O-Matic®, the new Hudson 10 gpm pump. No gears, no pistons, no packing, no cups, no greasing or oiling. Tanks with stainless steel or Endurall® liners. Ability to handle any sprayable material.

Accessories? Hudson has a full line to meet all your spraying needs: Booms for fast coverage of fairways. Special "Greens Gun" with Broad-Spray® nozzle for greens. Single, double or triple nozzle guns. Short guns, long guns.

You name the job—Hudson has the right spraying equipment to help you control weeds and insects faster and more economically. See your Hudson dealer. Or send coupon for more information.



1. PTO trailer sprayer with 20-ft. boom.
 2. 12½ gal. Suburban® Trail-N-Spray®.
 3. Porta® power spray pump, 3, 5, or 10 gpm.
 4. 300 gal. Peerless®, 10 gpm, up to 400 psi.
 5. 150 gal. Peerless with power take-off. 10 gpm, up to 400 psi.
 6. 150 gal. Peerless on skids. 5 or 10 gpm, up to 400 psi.
 7. 30 gal. Matador®, 3 gpm, up to 250 psi.
 8. 50 gal. Peerless with front-end caster.
- NOTE: Most sprayers shown come in choice of sizes, output, pressure.

SIGN OF THE BEST BUY



H. D. Hudson Manufacturing Company
589 E. Illinois St., Chicago, Illinois 60611

*Trademark

© 1965 H.D.H. Mfg. Co.

Please send me complete information on Hudson power sprayers.

Name

Address

City..... State.....

My equipment supplier is.....

BETTER TURF THROUGH BETTER SPRINKLING

MOODY

"Rainmaster"

MOODY SPRINKLER COMPANY, INC. / P.O. BOX 240
ARCADIA, CALIF.

"PIGGYBACK" YOUR CARTS



ON A **SNOWCO**® TRAILER

When it's not possible or practical to move carts under their own power — here's the answer. Trailer bed tilts to the ground for fast, effortless loading and unloading. Low center of gravity, automotive type springs. Accessory winch available.

For 1965—New larger, longer models including one with 1500 lb. capacity. Write for free folder.



THE SNOW COMPANY
4418 McKinley, Omaha, Nebr

... Woods Hole (Mass.) GC is expanding its dining and kitchen facilities . . . La Costa, Calif., a planned resort and residential community that is being built from the ground up, has work underway on its 215 acre course . . . La Costa's developers say that someday the city, located just inland from San Diego, will have 40,000 residents.

Pro **Mickie Gallagher**, who has been at Armed Forces GC in Atlanta, Ga. for 34 years, retired Mar. 1 . . . **Howard B. Daugherty** is the new manager of the Champions GC in Houston, Tex. . . . Local residents, headed by **Al Doane**, are busy trying to organize Dun Rovin G & CC in Hugo, Okla. . . . East Lake CC (Atlanta, Ga.) pro, **Harold Sargent**, has **Fred Elmgren** as his new assistant.

Grand Prairie, Tex.'s municipal 18-hole course now open . . . **Ralph Plummer** was architect . . . Construction of an additional nine holes is underway at the Osiris CC in Walden, N. Y. . . . **Louie A. Hir** is the new manager at the Oakley CC in Watertown, Mass., succeeding **William Osborne** . . . The new clubhouse of the Nolan River CC, Cleburne, Tex., has been opened . . . A country club-townhouse development, Shalimar West was opened in Tempe, Ariz. recently.

Freeman Barber is owner, builder and architect of a nine-hole course at Nunda, N. Y. . . . Lock 38 of the old Genesee Valley canal, reconstructed in 1865, is located on the eastern boundary of the course adding a note of historical interest . . . Forest Hills (Mich.) GC, 9-hole course, designed by **Harry Flora**, will open July 1 . . . Minnequa University Club, Pueblo, Colo., plans to add a course to the present facilities . . . Happy Hollow CC (Omaha, Neb.), hit by Papio Creek flood last June, to be redesigned. Pro **Bob Schuchart** says no decision has been made yet, but some of the holes will probably be moved to higher ground.

Miracle Hills, Omaha, Neb. semi-private course owners have filled in and sodded over a drainage ditch that ran through the course . . . This is expected to prevent further flooding such as occurred last year . . . Pro **Jerry Dugan** says