

WE'RE SELLING Complete Construction

* In just two years Colonial Gardens has become one of the leaders in Golf Course Construction. Check the record below.

1963

BUTLER GOLF COURSE
Elizabeth, Pennsylvania

CHESTNUT RIDGE GOLF COURSE
Blairsville, Pennsylvania

HOLIDAY WEST MOTEL GOLF COURSE
Harrisburg, Pennsylvania

LAKESIDE GOLF COURSE
Beverly, Ohio

BIG BEND GOLF COURSE
St. Albans, West Virginia

CLARKSBURG COUNTRY CLUB
Clarksburg, West Virginia

1964

DUNDEE PARK GOLF COURSE
Dundee, Illinois

CRUCIBLE MANAGEMENT CLUB, INC.
Midland, Pennsylvania

HIDDEN VALLEY GOLF COURSE
Pittsburgh, Pennsylvania

PONDEROSA GOLF COURSE
Warren, Ohio

DEKALB COUNTY COURSE
Atlanta, Georgia

AVALON GOLF COURSE
Warren, Ohio

In addition, maintenance and additions have been done on Kanawha County Park, Charleston, West Virginia, Zanesville Country Club, Zanesville, Ohio, Doolin Golf Course, New Martinsville, West Virginia and Morgan County, McConnelsville, Ohio.

COLONIAL GARDENS INC.

708 GREENE STREET • MARIETTA, OHIO
Phone 373-2188 • Area Code 614

SUCCESS*



and valves and a heavy sludge to form in low points of the hydraulic system. Acids will form and corrode metal parts.

If the oil is too light, temperatures may rise due to loss of pump efficiency. Losses from leakage are likely to occur.

With any oil, a machine designer takes into account the effect oil will have on rubber seals or other rubber parts in the hydraulic system. Improper oil will cause them to shrink or swell excessively, resulting in a malfunction of the system.

Swinging Around Golf

(Continued from page 115)

ton Smith becomes a member of Missouri's Sports Hall of Fame . . . Ren Smith, Horton's brother, was invited to receive the memorial plaque . . . Illinois PGA has booked its spring show of golf merchandise for McCormick Place, Chicago, April 16-18, 1965 . . . It held a preview at the section's fall meeting on Sept. 28 at which Harry Pezzullo was elected president for the tenth term.

Alex McKay, 71, died of a heart at-

tack, Sept. 19, in Nashville, Tenn., at the home of a granddaughter, Mrs. Roger Grimsley . . . Alex was born in Aberdeen and came from the Cruden Bay course to Louisville in 1923, then was pro-supt. and course designer and builder in West Virginia and New York before becoming pro-supt. at Holston Hills CC, Knoxville, from which club he went to Cherokee CC at Knoxville . . . He pioneered the successful introduction of bent for southern greens . . . Alex designed and built many courses in Kentucky, Tennessee and nearby states . . . He was first president of the Southern Turf Assn. . . . He is survived by his wife, Mrs. Martha Streach McKay, two daughters and four sisters who live in Scotland.

Dan Taggart, who took Arlington CC in northwest suburban Chicago and worked it for a little golf and a lot of farming in bringing it through World War II, is in bad shape at Holy Family hospital in Des Plaines, Ill. . . . He has done plenty for the Illinois PGA, which sent him an award of gratitude via Dan, Jr., from the section's fall meeting.

FOR TRUE GOLF GREEN BEAUTY..USE



TWICE AS
MUCH
NITROGEN
AS MOST
OTHER BRANDS.
BEST VALUE
FOR THE MONEY.

**Goldthwaite's
TURF SPECIAL**

A pelleted "organic base" 2-1-1 fertilizer for all types turf grass. Ideal for golf greens, fairways, athletic fields, and lawns.

**Goldthwaite's
of TEXAS, inc.**

FORT WORTH • DALLAS • HOUSTON • SAN ANTONIO

Vaughan's Seed Company

Good Turf from Good Seeds
From Tee To Green

DEPENDABLE GRASS SEEDS—FERTILIZERS
GOLF COURSE SUPPLIES AND EQUIPMENT
FUNGICIDES

WEEDICIDES

INSECTICIDES

— ESTABLISHED 1876 —

N. Y. Phone: 212 BARCLAY 7-4900

N. J. Phone: 201 ELLIOTT 6-4200

CHIMNEY ROCK RD.
POST OFFICE BOX 469
BOUND BROOK, N. J.

DOWNERS GROVE, ILL.
312 WO-9-6300

George Abrams, retiring after 28 years as an Acushnet salesman and before that nine years with Spalding, was a guest of honor at the Wisconsin PGA fall meeting and dinner . . . The section gave George a green PGA coat and a diamond-studded money clip . . . George started in golf as a caddie in Seattle . . . He pitched for the Cincinnati Reds for a while . . . Everybody who knows him says he's one of the finest men in the golf business and his competitors say "Amen." . . . Illinois PGA gave Abrams a plaque in expressing members' esteem and thanks.

J. Bud Geoghegan goes from pro position at Crestmont CC, West Orange, N.J., to De Soto Lakes G&CC, Bradenton, Fla. . . . Geoghegan, for his extensive golf education and entertainment programs at New Jersey high school adult classes, YMCAs, YWCAs and similar organizations, and newspaper, radio and TV promotion, has been identified as the Ambassador of Golf . . . He's an expert teacher, too . . . Frank Butler honored at party at Kingswood GC, Wolfeboro, N.H., where he has been pro manager for 50 years . . . Frank has worn

WHY DON'T THEY USE



**Locke
-DEVERE-**

POWER MOWERS AND TRACTORS?

Good grass means good golf • Locke-Devere Mowers and Tractors insure well-kept fairways, approaches, greens • Qualified dealers insure service

REEL

Prestige Locke REEL trims as it mows • Perfect "once-over" cutting • Lowest maintenance • Highest trade-in



ROTARY

Rugged models in engineered sizes up to 60" • Hill-hugging, clean-cutting units run by the hour



TRACTORS and Attachments

Longer wheel-base TRACTOR • 10 hp • From 1 to 10 mph • Instant reverse • Hundreds of uses on Golf Course

FREE BOOKLET! WRITE NOW TO:

**Locke
-DEVERE-**

POWER MOWERS

Locke Manufacturing Companies, Inc.
1202 12th Street — Racine, Wisconsin

LOCKE

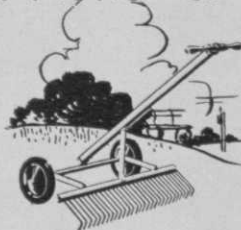
well with members and their guests every minute he has been at Kingswood.

Dick McGahan, of the Hart Seed Co. says Tom Scannell, supt. of Albany (N.Y.) CC, had his members applauding his versatility as an artist when Tom starred as a trumpet player with a combo playing at a club affair . . . Dick says several golf establishments on his beat are attracting so much play and are so well managed they're adding 9 or 18 holes . . . Among them is Mt. Everett CC, Great Barrington, Mass., where owner, Ed Fredericks, is enlarging the course to 27 and possibly 36 . . . Laurance Rockefeller was main speaker at big retirement party for Jack Wick, pro-supt at Woodstock (Vt.) CC for 48 years . . . Jack and his lovely wife, Mary, have been associated with golf in U.S. and England for 63 years . . . Wick is succeeded by "Rusty" Gilbert as pro and Dan Daigle, Stockbridge grad, as supt.

McGahan's notebook also notes that Walter Barcomb, Burlington (Vt.) CC supt., is among the Northeastern supts. who not only maintain their own courses in top condition on modest budgets but do fine jobs of design and construction . . . Barcomb designed Rocky Ridge CC, St. George, Vt., owned and operated by Al Doenges, the Albany (Vt.) CC course and the Quarry Hill Par-3 in Burlington, Vt., owned and operated by Ralph Des Lauriers . . . Eric Lehtonen building nine at Mountain Top Inn, Chittenden, Vt., to design of Frank Lamphier . . . Lamphier is in charge of construction of Norman Hubbard's new Pleasant View CC, Laconia, N.H.

Chicago District Golf Assn., as part of its golden jubilee program, is honoring an outstanding caddie of each member club with an award . . . Alert managers at newer clubs got clubhouse operations off to fine starts this past summer . . . Hylbert Hams, mgr. at Long Grove (Ill.) CC in northwest suburban Chicago, in first six weeks averaged 164 lunches and 186 dinners, not including parties . . . Hams, who has managed Sunset Ridge CC and Barrington CC in Chicago dist., has booked 28 tournaments, 11 dances, 19 lunches, four style shows and five weddings for 1965 and two dances for 1966!

DAVIS SPECIALS!



DEL MONTE GREENS RAKE

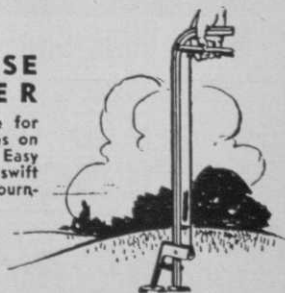
For removing runners and dead grass from greens. Rake has fine, stiff wire tines. Available with or without dolly.

\$35.00

BALL BRUISE REPAIRER

An ingenious device for repairing ball bruises on fine putting greens. Easy to use, it does a swift repair job during tournaments.

\$11.00



Write us today

George A. Davis Inc.

5440 Northwest Highway, Chicago 30, Illinois



Rogers Mfg. Co., Inc. 202 N. MAHAFFIE OLATHE, KANSAS

DIXIE CRAFT TRAILERS-



write: **DIXIE CRAFT TRAILERS, INC.**

TAKE YOUR GOLF CAR WHERE YOU NEED IT!

Why leave your Golf Car at the club? Take it with you and enjoy it more. DIXIE CRAFT GOLF CAR TRAILERS enable you to take your golf car with you on weekends, vacations and business trips. Drive right on. In less than five minutes you are loaded and ready to go. Tows perfectly at any speed.

Dealerships available.

- DEPARTMENT C
- Box 351; Eupora, Mississippi

GUARD AGAINST SNOWMOLD

with Cleary Turf Products

PMAS • CADDY

• THIMER •

• SPOTRETE •

**W. A.
CLEARY**
CORPORATION

New Brunswick, New Jersey

Skokie, Ill. Belleville, Ont., Canada

Golf Car Fleet For Sale

We have 115 Cushman 36 volt electric golf cars now in use at famous Tam O'Shanter Country Club in Chicago available for resale. These cars are complete with 6 batteries and are presently available for inspection at Tam O'Shanter where they currently are in daily operation.

We will accept orders in fleet quantities of 10 or more cars. No reasonable offer will be refused. Call or write:

Chicagoland Cushman Sales, Inc.

61 E. 23rd St., Chicago Heights, Ill.
Phone: WA 8-5555 (Area code 312)

"Old Sarge" Bill Carr goes from Ft. Devens (Mass.) Army Base course to supt. post at Bay Path CC, East Brookfield, Mass. . . Carr's predecessor at Ft. Devens course was Henry Romanski, now supt. at Quaboag CC, Munson, Mass. . . Supts. of several New England courses are now busy preparing for ski season at their properties . . . Don Cutter finishes second nine of Sugarbush course in Warren, Vt. . . Ernest Ralph is supt. . . Gordon Lowe in charge of building course to Bill Mitchell design in Stowe, Vt.

"Tink" Smith and "Mitch" McLaughlin have built first nine for Stratton Mountain Corp., East Londonderry, Vt. . . Geoffrey Cornish was the architect . . . Mount Snow (Vt.) Corp. to build 18 . . . Ralph Myhre, now supt. of Middlebury (Vt.) College 9-hole course and ski bowl . . . Harvey Drinkwine is supt. of grounds and buildings for the college . . . Mark Hirzel now pro at Kalakaua CC, Schofield Barracks, Honolulu . . . Hirzel came from teaching pro post at U. S. Naval post graduate school course in Monterey, Calif. . . He succeeds Bob Ford who has gone to the Leilehua course at Wahiawa as pro.

Tom Holstein now pro at new Stillmeadow CC in Cincinnati . . . Holstein was assistant to Jouett Brown at Coldstream CC, Cincinnati . . . Northmoor CC (Chicago dist.) building seven new holes to design of E. L. Packard . . . Construction contractor is Ray Didier . . . Seven holes across a road from larger part of course will be sold . . . There's talk about building public course at Traverse City, Mich. . . That's Walter Hagen's home.

Rain-O-Mat Markets Three New Sprinkler Units

Three totally new sprinkling units, two for turf and one for fairways, are being distributed by Rain-O-Mat Sprinklers, 11701 E. Washington blvd., Whittier, Calif. They are Models 6, 9 and 12. Basic model, No. 6, gives light precip in a fine stream with a throw diameter of 50 feet. It is recommended for spots under trees and where wind is a problem. The No. 9 rotary pop-up has a 3/4-inch riser opening and throw diameter of 80 feet. No. 12 has been designed for fairways and gives a throw of from 108 to 140 feet. It is tamper and hazard-proof since it pops down.

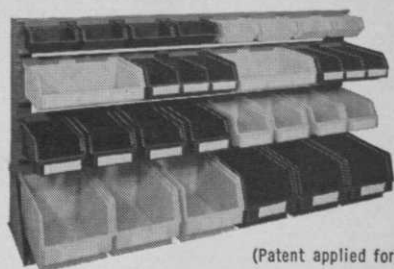
New Safari Holds 12 Gallons

Safari Water Coolers, 591 N. E. Fifth St., Pompano Beach, Fla., markets a new 1965 Model SR-12, Safari LP-gas water cooler with a large (12 gallon) easily cleaned, stainless steel reservoir. The large reservoir capacity cuts servicing and maintenance costs in half. The gas refrigeration unit operates at less than 6 1/2 cents per day.

Fore-Par at New Location

Fore-Par Manufacturing Co. now is located in larger quarters at 773 Broadway, Laguna Beach, Calif. The company, which makes flags, markers, etc., has moved its complete facilities to the new site and reports that there are no delays in processing orders.

Lewisline **HANDY-BIN** CONTAINERS



(Patent applied for)

for storage in pro shops and
maintenance departments

11 versatile sizes • 3 molded-in colors:
Blue, green and yellow • Smooth, one-
piece, easily cleaned • Impervious to
oil and water • Transparent dust covers
to keep contents clean • A variety of
mounting units to meet every need.

For further details contact:

CONTAINER DEVELOPMENT CORP.
WATERTOWN, WISCONSIN

GRASS SEED

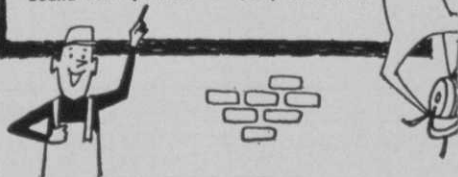
CHEMICALS & FERTILIZERS

For the care of tees,
greens and fairways

Alex Sehmeyer

CHANDERLIN SEED CO.

Chimney Rock & Foot Hill Road
Bound Brook, N. J. • (201) EL 6-8702



MOODY

"Rainmaster"

Better Turf
Through
Better
Sprinkling

MOODY

"Rainmaster"

MOODY SPRINKLER COMPANY, INC.
P.O. Box 240, Arcadia, California

DIRECT FACTORY QUOTATIONS

GOLFTILE Spike RESISTANT INTERLOCKING FLOORING

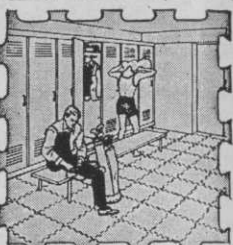
GOLFTILE is interlocking high surface - tension rubber flooring with soft inner body which springs to sharp pressures of golf spikes — recovers original shape without cutting or wear.

Approximately 1/2" thick 24" x 24" squares • Resists abrasion and cutting • Interlocking edges • Choice of colors • Easier to maintain • Top appearance • No cement or mastic required • No special skills required to install •

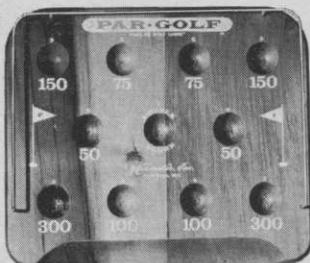
Also available in same material is our GOLF STRIP RUNNERS, 36" width. Send square footage or floor plan for free estimate to attention of:

M. M. Levitt

MITCHELL RUBBER PRODUCTS, Inc.
SPORTS DIVISION, Dept. G-4-OCT.



2114 San Fernando Road,
Los Angeles 65, California



PAR-GOLF®

The "Parlor Golf Game"

The perfect gift for the golfing family! A fascinating, challenging game for all ages, played by any number—individually or as teams.

Each player putts 5 golf balls in turn, has 9 turns, putting for the 4 large score holes and the "double score" in center. Highest total score for 9 turns wins. Balls rolling off board don't count but stay in play as "hazards."

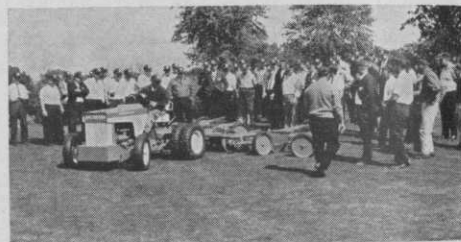
Attractively finished 15" by 18" solid wood game board comes complete with score pad in handsome heavy cardboard carrying case.

\$5.95 from your Pro Shop
WAGEMAKER, Inc.

566 Market Ave., S.W.; Grand Rapids 2, Michigan

Jacobsen Unveils Turf Groomer at Annual Sales Meeting

Shown in the photos with the new Jacobsen Turf Groomer (or Turf Commander or G-10 Tractor) are some of the 250 distributors and salesmen who attended the Jacobsen Manufacturing Co's turf equipment sales meeting Sept. 14-16 at The Abbey, Fontana, Wis. The extensive program featured a new products presentation,



a series of seminars, and a salesmen's demonstration contest. Highlighting the three day meeting were a golf tournament and awards dinner. President Einar A. Jacobsen presented the turf equipment distributor-of-the-year award to G. L. Cornell Co., Bethesda, Md. Regional distributor awards were presented to: B. Hayman Co., Los Angeles, Calif. (West), Illinois Lawn Equipment Co., Orland Park, Ill. (Midwest), W. F. Miller Co., Birmingham, Mich. (Central), Lawn & Golf Co., Phoenixville, Pa. (East), and Watson Distributing Co., Houston, Tex. (South).

FRANCIS J. DUANE

Golf Course Architect

Member

American Society of Golf Course Architects

735 Port Washington Boulevard
Port Washington, L. I., N. Y.

516 - PORT WASHINGTON 7-7851

Classified Ads • P 156
Buyers' Service • P 159



NEW! OPEN-HOUSE for Golf Course Use

Ideal for Tournament Registration Booth . . . 19th Hole Refreshment Center . . . Snack Bar . . . Caddie House . . . Expandable Storage Shelter for Golf Carts, Mowers, Tractors, Tools. **OPEN-HOUSE** is a strongly built, durably finished, steel structure that can be quickly assembled. It can be closed and locked safely at night. If required, it can be easily moved on a special **OPEN-HOUSE** trailer. **OPEN-HOUSE** is seven feet square and measures eighty inches under awning closures. Twenty-one feet of counter space keeps traffic moving.

Several units can be combined to make a larger structure with choice of wall panels. The low price will surprise you. Write for literature. **DISTRIBUTORS WANTED. GOOD TERRITORIES STILL AVAILABLE.**

INTERNATIONAL EQUIPMENT DIVISION

Morrison International Corp., 2485 Walden Avenue
Buffalo, N.Y. 14225 A subsidiary of Conax Corp.

Electric Caddy Available in Several Models

Electric Carrier Corp., D-207 Petroleum Center, San Antonio, Tex., 78209, one of the older

golf car manufacturers now in its 13th year, offers the new Electric Caddy car for 1965. Electric Caddy, widely distributed, is available in several models and readily adapted to industrial and commercial uses.



Electric Caddy offers full choice of tire sizes, tiller or automotive steering, choice of national brand batteries, efficient direct drive and many other features.

Schneider Directs Construction

Robert A. Schneider has moved to Riverside, Calif., to serve as consulting engineer during the construction of a multi-million dollar pipe division plant being built by Certain-Teed Products Corp., Ambler, Pa. Schneider, chief engineer of the pipe division, was with Keasbey & Mattison for 26 years before coming to Certain-Teed in 1962 when K & M was acquired. His successor as chief engineer is Jack L. Anderson, former plant manager of Certain-Teed's Hillsboro, Tex., plant.

FAULCO AIRTREAD Spike Resistant Rubber Flooring-Runners-Tee Mats

FAULCO rubber flooring is custom manufactured in any color and several qualities to give any degree of spike resistance.

Flooring is manufactured in sheets to 6 ft. x 16 ft. x 3/8ths in. thick. Edges are cemented together so there are no corners to trip over.

Driving range tee mats are custom manufactured in one solid piece to your specifications. Send square footage or drawing for free estimates.

FAULCO INDUSTRIES, INC.

11229 S. Brookshire Ave.
Downey, California; TOpaz 2-6968

**EASIER
THAN
GIVING
LESSONS!**

**EARN \$35 per PERSON
BOOK A GOLF VACATION**

Presidential Golf Vacations
at
Palm Desert Country Club
Palm Springs, Calif.

Hollywood Tours is introducing this golf vacation — available to your members — only thru your pro shop. Members' name, address & vacation time is all you need to earn your commission. \$35 per name.

Get complete information about this easy **EXTRA MONEY** maker.

Contact:
Johnene Griffin (Tour Director)
Hollywood Tours, Inc.
1800 N. Argyle St.
Hollywood 28, Calif. 774-0885

**Con-Voy Cart Provides
Rest Stop for Golfers**

The latest Con-Voy golf cart features a built-in, folding golfer's seat constructed of aluminum tubing covered with vinyl plastic to protect clothing. When it is not in use, the seat fits into the top of the cart frame, serving as a handle for wheeling and storing the folded cart. Other features of the Con-Voy cart are 12-inch aluminum wheels, Fold-o-matic release, operated with a simple squeeze, and a 24-position handle. Con-Voy is manufactured by Product Engineering Co., 4707 S.E. 17th ave., Portland, Ore. 97202.



18-Hole Course Fenced In

More than 77,000 square feet of resin-clad, steel-chain link fence has been installed at the Sunken Meadow State Park 18-hole course on the North Shore of Long Island. The fence is made of 6-gauge galvanized steel and is 4- and 6-feet high. Colorguard Corp., 126 E. 38th St., New York 10016, manufactures the fencing material.

**ATTENTION! —Golf Club Officials,
Owners, Managers, Superintendents
Golf Professionals**



GOLF SHOE VALET

... aids you in keeping carpet and floor clean in clubhouse, pro shop and locker room. Cleans grass & mud from bottoms AND sole edges of shoes. Anodized aluminum frame with base brush of hard wood and heavy duty plastic bristles. Tampico fibre side brushes. All brushes removable, reversible, replaceable. In grey, orange, yellow. 1 unit \$19.95; 3 or more \$17.95 ea. FOB Huntington Park, Calif.

Fibre side brushes. All brushes removable, reversible, replaceable. In grey, orange, yellow. 1 unit \$19.95; 3 or more \$17.95 ea. FOB Huntington Park, Calif.

ALUMINUM TEE MARKERS

... in USGA recommended colors — Red for front tees, Blue for back tees, White for middle tees, Aluminum for women's tees. Custom made to conform to your score card, 9 hole set, \$85.50; for 18 holes, \$165.50.



GOLF COURSE SIGNS

In Lifetime Aluminum
Strong — Easily Read

5" x 8" and 5" x 10" signs in embossed aluminum with enamel finish. Special wordings available. In Black, Orange or Yellow letters on White background. From \$3.25 to \$5.75. Stakes .75 each.



NOTE: Postage paid if check received with order.

GOLF COURSE SPECIALTIES

P. O. Box 388, Huntington Park, California

WANTED!

**SHOPWORN
'64 CLUBS & BALLS
for IMMEDIATE CASH**

(Clubs Must Have Swing Weight Continuity)

**SEND ME A LIST OF THE LEFT
OVER INVENTORY YOU WISH TO
LIQUIDATE . . .**

**"Largest Pro Shop in the West"
Class "A" Member PGA**

**WALTER KELLER'S
Golf School & Pro Shop**

2138 Westwood Blvd., Los Angeles 25, Calif.
Area Code 213 — GRanite 4-1547



Jack Carnahan, who recently organized a golfwear sales company, got his group together for a meeting at the Sheraton Motor Inn, St. Louis, late in August to discuss marketing methods. At the meeting were (l to r): Joe Sullivan, Long Island; Joe Moore, Jr., Tex. and Okla.; Jack Carnahan, Calif. and Northwest; Joe Salata, Ohio, Pa., W. Va. and Western N.Y.; Jack McKenna, Boe Jests, Inc.; Elsie Vincent, Fla.; Howard Marks, Jefferson Mfg., Inc.; Joe Aubuchon, St. Louis, Ill. and Ind.; and Vic Del Guericco, Modello Corp. Willard Moore, who covers Ga. and the Carolinas for the Carnahan firm, was absent when the photo was taken.

Toro Shows Revolutionary Mower at Annual Meeting

More than 150 persons attended the recent annual distributor meeting of Toro Manufacturing Corp., held in Minneapolis. At an outdoor showing, Toro demonstrated several new power mower products including Flymo, a wheelless rotary that floats on a cushion of air. It is said to be the most unusual innovation in mowers since Toro introduced "Wind Tunnel" housing for its Whirlwind line six years ago. Also on display was a new line of automatic turf sprinkler systems for both home and course use. The new "valve-under-head" sprinkler for large areas combines a hydraulic control valve with the sprinkler head and is said to be ideal for converting quick coupler systems to completely automatic sprinkling.

Buckner Recommends 1400 Series for Low Pressure Areas

Cam-driven, rotary pop-up sprinklers (1400 Series) are being marketed by Buckner Industries, Fresno, Calif., for large scale turf areas in locations where low water pressure systems are used. They have been designed for both automatic and manual underground systems. A turbo-drive principle, incorporated in all 1400 sprinklers, makes it possible to achieve extremely light precipitation on large areas with minimum water supplies. Models in the 1400 series provide up to 60-ft. diameter coverage with an 11/64 in. nozzle in full, half or quarter circle; the 1410 is available only in full circle with 70-ft coverage. A free catalog describes Buckner sprinklers.



KEN Shop Supplies

Help You Give Better Service



All
Ellington Tools
Grip Conditioner
Stains, lacquers,
adhesives
Grips
Listing
Whipping
Shafts
Collars
Plugs
Sheathing
Buffing and
cleaning
supplies
Golf Club Scales
Official, Lorythmic,
Prorythmic
All other shop needs

Write for handy SHOP SUPPLY LIST

Kenneth Smith GOLF CLUBS

Hand-made to fit You



World's Largest Custom Club Maker

Box 41-GM, Kansas City Mo., U.S.A.

"A firm grip is
fundamental to a
good golf swing
...my game
starts with
PRO-GRIP"



DOW FINSTERWALD
1963 Ryder Team



MANUFACTURERS
SPECIALTY CO., INC.

2736 SIDNEY STREET

ST. LOUIS 4, MO.

SKINNER

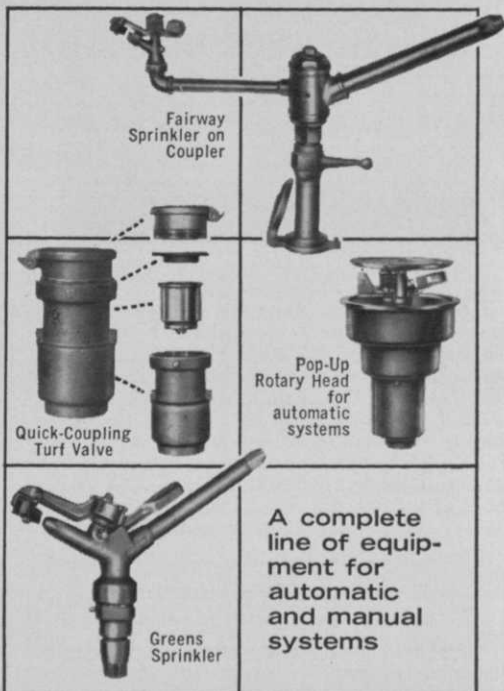
. . . the oldest and most experienced name in irrigation

Over 60 years of irrigation research, design and manufacturing experience is built into Skinner products of today to assure you efficient, economical golf course watering—either manual or automatic.

Skinner sprinklers—made in a complete range of types and sizes—distribute water uniformly and slowly with maximum coverage at minimum pressure. The patented Skinner quick-coupling turf valve is the only bayonet type valve that can be cleaned and repaired without being removed from the riser—and without disturbing the turf.

Whatever your watering requirements may be, it will pay you to investigate Skinner.

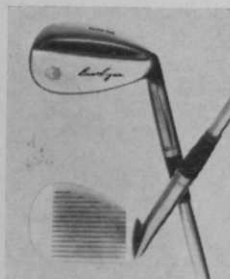
Write today for complete information!



A complete line of equipment for automatic and manual systems

THE SKINNER IRRIGATION COMPANY, 415 WATER ST., TROY, OHIO

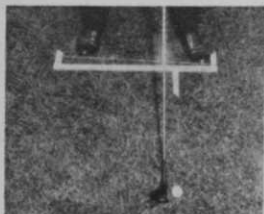
Hogan Sure-On Wedge



The Ben Hogan Sure-On wedge is said to give mastery of difficult approaches from as far as 100 yards out. Its rocker sole gets the ball up and away from soft or hard ground and through heavy or light grass. It is a companion to the Sure-Out and has a leather grip, black with red stripes, or Slip-Proof grip, black with white fill. The wedge is available in 35 and 35½-inch lengths.

or Slip-Proof grip, black with white fill. The wedge is available in 35 and 35½-inch lengths.

Develops Align-O-Stance



Robert Tabor, 5131 Hallgate, Toledo, O., an aluminum awning salesman who shoots in the low 80's, has developed Align-O-Stance to aid golfers in better controlling their shots.

Made of one-inch anodized channel aluminum and weighing 13 ounces, it automatically positions the golfers' feet for his choice of stance. The main length of aluminum is calibrated to

show the exact distance between the inside of the right foot and left heel. A string at the proper marker at each end determines foot placement for an open, closed or square stance.

RMF PlugMaster Harvests 300 Plugs A Minute

The PlugMaster 400, manufactured and distributed by RMF Products Co., 5915 Troost ave.,

Kansas City, Mo., plugs all types of soil. The machine is powered by a 4 hp gas engine and cuts and picks up four rows of 2-in. diameter plugs spaced on approximately 8-inch centers. Capacity is more than 300 plugs a minute, delivered into a removable tray. RMF points out that the PlugMaster can be used in the nursery to harvest as well as prepare the ground for plug installation. The firm is planning to introduce a smaller sod pluggers for more efficient use on greens and tees. A larger, tractor drawn model also is being planned by RMF.



Classified Ads • P 156
Buyers' Service • P 159