





JOHN BURT
FLORIDA
SALES MANAGER



LEW MENGLE
NORTHWEST



JOHN BRYANT
INDIANAPOLIS



ALLEN CAMPBELL
BOSTON



DON DOLAN
LONG ISLAND



JACK FUTERER
OHIO



TED CASSIDY
PHILADELPHIA



BOB CRAVER
THE CAROLINAS



LES DeFINO
LOS ANGELES



WARD EVERITT
FLORIDA



JOHN HAINJE
KANSAS CITY



BO OLIVER
DALLAS



FRED PARKS
NEW JERSEY



HILLMAN ROBBINS
MEMPHIS



TERRY HAGAN
ATLANTA



BOB BISDORF
DENVER



HAROLD STEWART
DETROIT



RUDY WEBER
MINNESOTA



BUD WERRING
CHICAGO



FORD WHITE
NEW YORK



ART YANN
PITTSBURGH

*Representatives
in every principal city*



THE
ERNIE SABAYRAC
ORGANIZATION

Presents its

Blue Chips Specialists

This may sound like a brokerage house, and in a way we are. The Ernie Sabayrac organization is commissioned by our nationally advertised suppliers of apparel to make available to Golf Shops representatives of quality and ability.

These gentlemen pictured here are schooled thoroughly and constantly in merchandising techniques. No expense is spared to make these SPECIALISTS your most important business consultants to you in your shop.

And the well known and publicized BLUE CHIP LABELS below provide you security and profit with the finest quality and best selling lines of Golf apparel.

This organization is proud to have been the FIRST to put the pro shop in the apparel business. It took a bit of doing. Hard thinking, hustle, creative merchandising, ideas, ideas, ideas aggressively given you by the SPECIALISTS shown here.

And that's why the apparel business . . . not just ours, but everybody's . . . is on the go. We're not a bit modest about the way we help our competition.



Ernie Sabayrac INC.

P.O. BOX 1180, HIALEAH, FLA. 33011

TELEPHONE 888-2461

P.S. Visit us in our brand new showroom in Florida. It's full of ideas, ideas, ideas!

FootJoy

IZOD

HAYMAKER

Palm Beach

Footley

Flip-It

Coverhnet

oters should keep these things in mind when they go to Las Vegas.

The "fly-in" requirement of the McAllen (Tex.) International Fly-In tournament, scheduled for Nov. 5-8, has been dropped . . . Players who take part in it are no longer required to arrive by plane . . . The munny course on which the tournament is played adjoins Miller International Airport and in the past, players from Mexico, Canada and U.S. have taken part in the McAllen event . . . Bill Moran, formerly at Plainfield (N.J.) CC, has taken over the head pro spot at Shackamaxon G & CC, Scotch Plains, N.J. . . . Club managers and supts. in the Chicago area got together at Midlothian CC in mid-September for their third annual golf day and dinner . . . Austin Steeves, manager of Brookwood CC, Addison, Ill., was the emcee for the affair.

Reuben P. Hines, Sr., who spent nearly 50 years in the golf business, died in Mound Park Hospital, St. Petersburg, Fla., in Sept. of a heart attack following major surgery . . . He had retired only a month before after serving for 20 years as supt. of the Georgetown Prep School golf course in Garret Park, Md. . . . Before that he had been supt. at Manor CC and Congressional CC, both in the Washington, D.C. area . . . Mr. Hines was one of the organizers of the Mid-Atlantic GSCA and was president of the organization in 1931 and 1946-47 . . . He designed and built three courses in Virginia and Maryland and also had re-designed and re-constructed numerous holes at clubs in and around Washington . . . Among his survivors is a son, Rueben, Jr., supt. of Sunset G & CC on Snell Island, near St. Petersburg.

A leaf blower designed by Charlie Bartlett, pro at Timber Trails, LaGrange, Ill., and described in *Golfdom* last March (page 102), has been improved and has nearly twice the range it had when Bartlett first started using it . . . Where it once sent dry leaves scurrying 100 feet it now has a downwind range of close to 200 feet . . . Gerald Dearie Jr., supt. at Medinah (Ill.) CC, has been testing the machine on fairways at his course and feels that it's going to greatly improve fall playing conditions . . . Marvin (Bud) Ward, winner of the 1939 and 1941



MacGregor employees not only know how to build golf clubs, but to swing them. This team recently won the 19th National Industrial championship at Purdue University, beating Thompson Ramo Wooldridge, Inc., Cleveland, in a playoff. More than 100 teams from eight states took part in the event. In the photo are (l to r): Leo Honebrink, Chuck Caldwell, Lou Evers, Stan Stabner, Ron Stokeley and Joe Costello, director of industrial relations for the MacGregor^r firm.

National Amateurs and pro at Peninsula G & CC, San Mateo, Calif., is recovering at his home following major surgery.

Dick Stranahan, touring pro, made his first hole-in-one with a US Royal ball labeled #1 on Sept. 7 on the 7th hole using a 7 iron from a distance of 170 yards . . . Stranahan's succession of 7s and 1s occurred at Fresh Meadow CC, Great Neck, L.I., where the week previously he had set the course record with a 63 . . . Hugh J. McLaughlin, founder of the South Bend, Ind., golf ball manufacturing firm that bears his name, recently passed away . . . His son Joe is president of the firm . . . McLaughlin died in St. Petersburg, Fla.

Between Aug. 3 and Sept. 10, John McCord had holes-in-one twice on the 94-yd. fifth hole, once on the 131-yd. ninth and once on the 120-yd. fourth at the Par 3 Los Feliz course in L. A. . . . The Sherman Co., headed by Bill Sherman, former western director of the National Golf Foundation, has been hired by the Northern California Section of the PGA as a special advisor . . . Sherman will assist in developing a public relations program directed at providing better jobs and better contracts for members . . . The 50th annual amateur championship of the Women's Southern Golf Association will be held at the Chattanooga (Tenn.) G&CC, May 17-22, 1965.

DIRECTIONAL AND INFORMATIVE GOLF COURSE SIGNS



THE MOST DURABLE, ATTRACTIVE
AND ECONOMICAL GOLF SIGNS
ON THE AMERICAN MARKET

4" x 8"
SIZE **50¢**

Large, 6" x 8" golf signs, 75¢ ea.
Self-fastening aluminum stakes, 25¢.

Designed and produced with the same attention to good taste and quality that reflects country clubs and golf courses the nation over, T A T golf signs are a product of 35 years of industrial sign making know-how. T A T golf signs are constructed of tough, durable, three-sixteenths deluxe tempered masonite, spray coated with a snow white background and printed in vermillion red, with long lasting enamels.

Yardage Markers, 6" x 8" size,
with the new raised numbers.
(Send us your score card)
Available in sets of 18 for
\$28.80
— or set of 9 signs for only
15.95

(either set includes stakes)

SAMPLE OFFER

Prove to yourself the quality and attractiveness of T A T golf signs — send \$1 to cover handling, boxing and mailing and we will send a sample 4" x 8" sign with stake.

Complete T A T Golf Sign brochure **FREE** on request:

TAT GOLF SIGNS

DUNEDIN, FLORIDA

Telephone 733-5000

5 TEE

13 TEE

CARTS

18 TEE

SMOOTH SAND
NO CARTS

CART PATH

LEAVE
CARTS
HERE

NO CARTS

NO
MULLIGANS

REPLACE
DIVOTS

GROUND
UNDER REPAIR

NEXT TEE

150

200

PRIVATE
PROPERTY

NO PARKING

PARKING

RESERVED

DRINKING
WATER

OB

PRACTICE
AREA

DEFINITE
HAZARD

ALLOW FASTER
PLAYERS THRU

KEEP OFF
THE GRASS

DROP AREA

TURF TROUBLES?



try our line of tested, trusted treatments
for finest turf!

- FUNGICIDES
- HERBICIDES
- INSECTICIDES
- LIQUID & SOLUBLE FERTILIZERS
- WETTING AGENTS

write for our FREE 25th Anniversary Catalog

AMERICAN LIQUID FERTILIZER CO., INC.

and ROKEBY CHEMICAL COMPANY

Marietta, Ohio ● P. O. Box 267 ● phone 373-1394

Publicity and press committee for 1965 PGA Championship, to be played at Laurel Valley GC, Ligonier, Pa., isn't losing any time in publicizing the event . . . It held press parties at the club on Sept. 23 and 30 in kicking off the '65 affair . . . Arnold Palmer plays out of Laurel Valley . . . Member-guest tournament, played in Sept. at Shorehaven GC, Norwalk, Conn., was picked up on closed TV and shown in the clubhouse . . . Norelco vidicon cameras and three 14-inch TV monitors were used in relaying the action via a 2,000-foot cable from the course to the clubhouse . . . 1965 Tucson Open to be played at Tucson National in 1965 and 1966 . . . Tucson GA is guaranteeing a minimum purse of \$40,000 for the 1965 renewal, an increase in prize money of 50 per cent.

North Portal GC, North Portal, Sask. and Portal, N.D., is located on the U.S. Canadian border . . . Eight holes are in Canada and the first tee, ninth green and clubhouse are in U.S. . . . Immigration officials don't guard the traps or fairways so golfers play right through without visas of any kind . . . The clubhouse was built

on the U.S. side because Saskatchewan has a Sunday blue law that forbids the serving of liquor . . . Bob Baldock, who has been designing and building courses for 35 years, recently brought his son, Bob, Jr., into the business . . . A student at Fresno (Calif.) State College, young Baldock has assisted his father for several years on weekends and during summer vacations, helping out on construction jobs in Japan, Hong Kong and the Philippines.

Earl Brown, who is based on a coast guard cutter, shot a 284 to win the 12th All-Navy tournament, played at Gallery GC, NAS Whidbey Island, Wash., in Sept. . . . The runnerup was Commander Bill Whisler, Silver Springs, Md., who had a 293 . . . Bob Gutwein, who left Lake Merced G&CC, Daly City, Calif. a few weeks ago after eight years on the job, has been named golf director for Rancho Bernardo CC, near San Diego . . . Gutwein, onetime director of the Northern Calif. PGA, was co-administrator of the 1962 PGA West Coast business school.

The 62nd Trans-Mississippi GA tourna-

COLE'S SKYLINE (Plant Pat. 1619) An outstanding product of Cole's expert selective breeding, this stately, symmetrical variety is an ideal lawn or street tree that grows to about 40 feet. It is one of four modern Cole Honey-locusts that transplant easily, grow straight *without staking*, cause no ground litter, are widely adaptable and highly resistant to storms, drought and city conditions.



CLEVELAND NORWAY MAPLE A very vigorous improved selection from an old favorite. Foliage has richer color and more substance than other varieties. Widely spaced in our nurseries for fully-formed heads. Withstands drought and city conditions. Matures at approximately 50 feet.

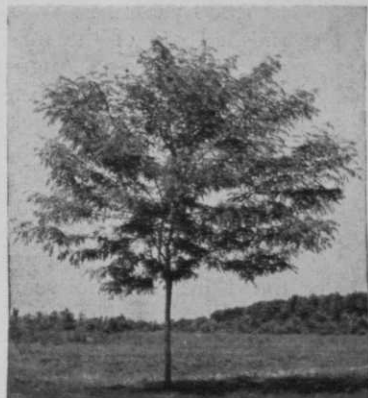
Now you can select the trees you need to fit your plans from Cole's Improved Old Favorites and Patented Modern Varieties

When you want special-purpose trees that fit your landscape plans and your budget call the tree specialists—Cole Nursery Company. You can get the right type, size, shape and ultimate height you want in ample quantity from Ohio's largest wholesale nursery—healthy, strong-rooted thriving trees. Write for a catalog or special quotation.

THE COLE NURSERY CO.

Phone **ELmwood 2-3121**

HEADQUARTERS: 2000 W. Jackson St., Painesville, Ohio
CIRCLEVILLE DIVISION: Old Route 23, Circleville, Ohio



COLE'S IMPERIAL (P.P. 1605) Matures at 35 feet. Ideal shade tree for golf courses.

Convert to RAIN BIRD'S completely automatic sprinkling system. MAKE THE FINAL MOVE THAT MAKES THE DIFFERENCE!

Here's why more and more clubs are making the big change to Rain Bird's completely automatic system:

DIRECT CONTROL — Rain Bird Rain-Clox does the sprinkling where, when and how you want it. Has the most flexible of all 14-day cycles . . . sprinkle as briefly as a minute, as long as an hour. Set the cycle that's best for each area . . . then forget it. All settings are easily made with dependable switches and dials. No loose pins or pegs to get lost or broken.

PROPER SPRINKLING — Rain Bird sprinklers are scientifically engineered to provide the precise amount of sprinkling needed. No "missed" spots . . . no run-off. And no trouble!



(Above) Completely automatic Rain Bird system at new Belvedere Country Club, Hot Springs, Arkansas.



Rain Bird Rain-Clox remote sprinkling controller. Completely automatic. Just set it and forget it.

Rotor Pop-up in open position. Green vinyl covered top. Numerous models.



For complete engineering information, contact your local Rain Bird dealer or write direct (in the East and Midwest) Rainy Sprinkler Sales, Division L. R. Nelson Mfg. Co., Inc., 609 West Lake St., Peoria 5, Illinois; (in the West) Rain Bird Sprinkler Mfg. Corp., P.O. Box 37, Glendora, California.

THE WORLD'S MOST COMPLETE
LINE OF TIME-PROVEN
TURF SPRINKLING EQUIPMENT.

RAIN BIRD
SUREST AID TO IRRIGATION

ment will be played July 12-18, 1965, at the Kansas City (Mo.) CC . . . In 1966 the tourney will go to Edina CC in Minneapolis and in 1967 to San Antonio (Tex.) CC . . . The 1965 Trans-Miss Senior is to be played at Desert Inn CC, Las Vegas, Mar. 21-25 . . . More than half of the 138 exhibit booths for the 1965 GCSA international turf show, to be held in Cleveland, Feb. 7-12, 1965, have been sold . . . Pleasant Valley CC, Sutton, Mass., will be the 1965 site of the Carling World Golf championship . . . Course was put in play in 1961 and runs to 7,350 yards . . . When Mickey Wright finished out of the money in the Albuquerque Open in August, it marked the first time in 111 tournaments that she missed earning a check . . . However, Mickey had to pull out of the 1959 Cosmopolitan because of illness, and in 1962 she was disqualified in the Eastern for signing an incorrect scorecard.

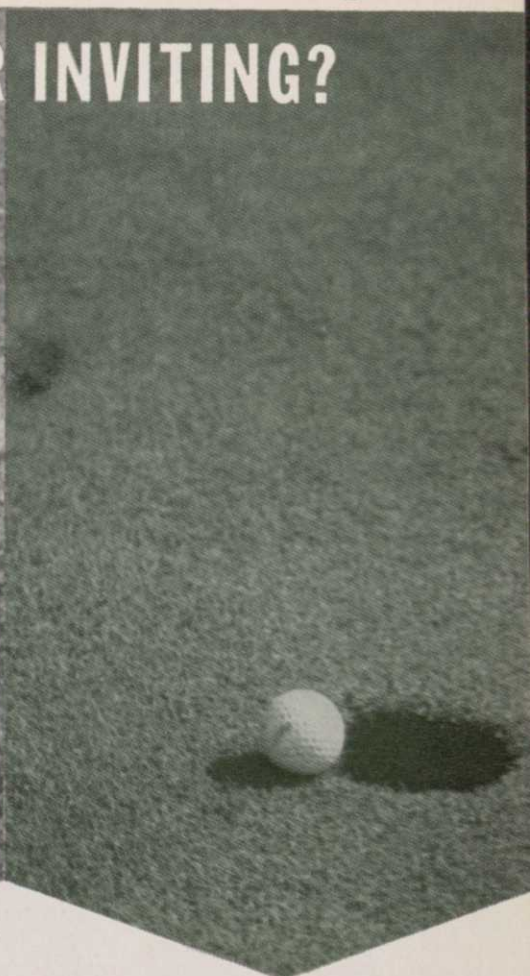
Thunderbird Open will be played for the third straight year at Westchester CC, Harrison, N.Y., in 1965 . . . Tournament dates haven't been set . . . 1965

German Open to be played July 23-25 at Hamburg-Falkenstein . . . Good Yarn: John McQuade, Southern Cal supt. tells this one on himself . . . He was leaving a SCGCSA meeting not long ago when he was stopped for speeding . . . The police officer read the inscription "GCSA Invitation — 1964" on John's golf cap and launched into a description of the latest round he had played . . . McQuade got off without a penalty for listening, but received this advice: "Shorten your speed and you'll lengthen your drive."

CBS may have had made a much better deal in signing Cary Middlecoff as its golf analyst than in buying the Yankees . . . You don't hear any criticism whatever of the Memphis dentist as a sportscaster because he gets better from tournament to tournament . . . He has a background of more than 15 years on the circuit and knows what it's like to win the big ones — one Masters and two USGA Opens . . . This isn't Cary's first fling as a sportscaster . . . He had his own radio show in 1953 and 1954 . . . On page 88 of Sept. Golfdom, Ralph Guy-

Are your greens and fairways

UGLY OR INVITING?



Avoid ugly disease spots with Panogen Turf Fungicide

Unnoticed patches caused by fungal diseases give golf courses a rundown look, discourage patronage. And these spots spread so fast, they can become quite costly. The quick, economical answer to protecting the big-money investment you have in your greens and fairways against fungal diseases is Panogen Turf Fungicide. Low cost per 1000 sq. ft. makes this the best buy for your maintenance budget. Panogen Turf Fungicide is recommended for Melting Out, Dollar Spot, Brown Patch, Damping Off, Fairy Ring, Snow Mold.

Panogen Turf Fungicide is highly selective, attacking only fungal diseases without injury to the turf itself. It is a liquid concentrate, proven safe and effective. Simply mix with water and apply with available spraying equipment. Order from your chemical supplier.



PANOGEN[®]
TURF FUNGICIDE

Another peace-of-mind product from

MORTON CHEMICAL COMPANY

DIVISION OF MORTON SALT COMPANY

• 110 N. WACKER DRIVE • CHICAGO 6, ILL.

Turfco.

Complete turf irrigation supplies
and service under one **local** roof!

PLASTIC PIPE



Made expressly for heavy-duty requirements of turf irrigation; rust-proof, corrosion-resistant.

Sprinkler HEADS



Rugged and efficient... providing years of economical and trouble-free operation.

Automatic CONTROLLER



Simple to operate, compact, complete timing flexibility. Designed to meet any requirement... any budget.

**COMPLETE ACCESSORIES
AND PARTS**

**Design and Installation Service
Fully Guaranteed LOCALLY**

Turfco.

See your Turfco Distributor listed in the Yellow Pages, or write to Turfco Industries, 1340 N. Northlake Way, Seattle, Washington.

er was reported as being the supt. at Glen Echo CC in St. Louis . . . That was a mistake . . . Ralph is the greenmaster at Westborough CC in Webster Groves, Mo.

Alfred H. Tull designing a third nine for Hercules Powder Co., Wilmington, Del., and 18 for city of Norwalk, Conn. . . . The Norwalk course is to have tennis courts, pool, skating pond, toboggan slide, ski-run and nature study area for school children . . . Nevele Hotel, Ellenville, N.Y., recently opened its second nine which Tull designed.

Millions are being spent for clubhouse building and improvement . . . Lawton (Okla.) CC spending \$150,000 remodeling its clubhouse . . . Indian Hills CC, Newington, Conn. has put aside \$125,000 for enlarging clubhouse . . . Normanside CC, Albany, N.Y., spending \$300,000 rebuilding burned clubhouse . . . McConnellsville (N.Y.) GC building new clubhouse . . . Moundbuilders CC, Newark, O., moves into its new clubhouse . . . Glens Falls (N.Y.) CC greatly enlarging clubhouse . . . Brentwood CC, Nashville,

Tenn., spending \$105,000 in clubhouse expansion . . . Huntsville (Ala.) CC to spend \$750,000 for new clubhouse . . . Arizona CC, Phoenix, has \$300,000 clubhouse improvement program in the works . . . Glenview (Ill.) park board spending \$100,000 on new clubhouse at many course.

Willowisp CC in Houston, Tex., suburban Westbury, has bought 18-hole Sandy Lakes CC . . . Willowisp had a par-3 nine, clubhouse and pool . . . It has been renamed Willowisp Town & CC . . . Sandy Lakes now is called Willowisp CC . . . Country club memberships seem to be increasing substantially and waiting lists in metropolitan district clubs are longer than they've been for years . . . Better organization and operation of membership committees and more attention to women's influence account for improvement in the newer club membership situation.

Somehow we got lost in the rough with two items in August Golfdom . . . We had Fox Hills CC, Mishicot, Wis., where Pat Patton is pro, listed as a short course