



Wetting Agent Tends to Slow Wilt, According to Meusel's Studies

By **ROBERT A. MOORE**

President, Aquatrols Corp. of America

(Second of Two Articles)

In part 1 of this article (April, p 38) we discussed the soil physics involved wherein improvement in the infiltration, transport (drainage), uniformity, and availability of moisture in soils treated with a soil wetting agent were shown.

Now, let's go into the recent work done at Yale University by Harry Meusel, the course supt. there. His work studies the effects that soil wetting agents, watering practices, and fertilizing have on the wilting, appearance, internal cell structures, and stomatal openings of poa annua.

The first slide from his work shows the pots from one of the replicas. You will note the difference in color and growth. (This article is condensed from a speech Moore made at Purdue University. Slides shown with the speech aren't available. Ed)

The next slide is a closeup showing more compact growth and slightly better color where a wetting agent was used. Minus "W" means no wetting agent, the "1" refers to infrequent watering (once a week) and the "N-1" refers to one pound of added nitrogen per month. A top view in this slide shows even more clearly the good tight turf and darker color in the wetting agent treated soils. Incidentally, these tests were conducted using a mixture of sand and vermiculite in an effort to avoid introducing added variables from a soil.

These treatments were allowed to naturally wilt. In the next slide (not available) we see the order of wilting part way through the test. General conclusions from this work showed that frequent watering (six times a week), rep-

resentative of a rainy period, increases wilting. Fertilization at this time aggravates the situation. The use of soil wetting agents gave a very significant increase in resistance to wilting. We'll see more of this in a minute. This slide is merely a closeup to show the completeness of wilting when it occurs on poa. You may wonder at the length of the grass. The grass was clipped during the test at 1/2 inch twice weekly for 12 weeks, and then allowed to grow for 8 days, or until wilting.

The wilting characteristics of the grasses was also checked in a wilting chamber where effects of light, humidity, temperature and air movement were studied. This slide again shows the completeness of wilting. The order of wilting in the wilting chamber agreed with the results of those that were allowed to die naturally:

- (Poorest)
1. Frequent watering & fertilizer.
 2. Frequent watering.
 3. Frequent watering, fertilizer, and wetting agent.
 4. Infrequent watering and fertilizer.
 5. Infrequent watering.
 6. Frequent watering and wetting agent.
 7. Infrequent watering, fertilizer and wetting agent.
- (Best)
8. Infrequent watering and wetting agent.

It is evident again that frequent watering, or a rainy period, increases the susceptibility to wilt and that fertilizer tends to aggravate the situation. The soil wetting agent, on the other hand, has the effect of slowing wilt under all conditions.

From each set of pots, blades were picked at random (before the wilting test)

Roughs like this separate WISCONSINS from putt-putts



Powerful 60-inch rider and a 42-inch model powered by a 9.2-hp Wisconsin are made by Yazoo Mfg. Co., Inc., Jackson, Miss.

Mowing miles of fairways and forests of dense rough without let-up calls for rugged power — not putt-putts. That's why the 60-inch Yazoo rider has a hard-nose up front — a 12.5-hp Wisconsin.

Other engines can match the AGND's 12.5 hp — *but not its strength*. Its close-governed speeds and rugged load-lugging power enable it to glide over fairways and breeze through dense growth without stalling or constant jockeying. One pass is all it takes to finish the job.

Micro-finished reciprocating parts assure smooth power and minimize wear. Long-life exclusives include: Forged-steel crankshaft and connecting rod; cam-ground piston with chromed top compression ring, and service-free

tapered roller main bearings. Its Stellite exhaust valve and insert plus rotator outlast ordinary valves up to five times in hot, severe, and dusty applications. The results: Seasons of trouble-free mowing with minimum upkeep.

For the smoothest mowing of fairways and roughs, and the biggest cut in turf upkeep costs — specify rugged Wisconsins. Send for Bulletin S-324. Write to Dept. P-34.

WISCONSIN
MOTOR CORPORATION
MILWAUKEE, WISCONSIN 53246

*World's Largest Builder of
Heavy-Duty Air-Cooled Engines — 3 to 60.5 hp*

P-592

for leaf impressions and cross sectional studies. By studying the cell structure of the blades under the microscope, it becomes evident as to why the plants reacted as they did. We will now look at a series of these cross sectional slides, figures (1) A, B & C, and figures (2) A, B & C described by the captions below them.

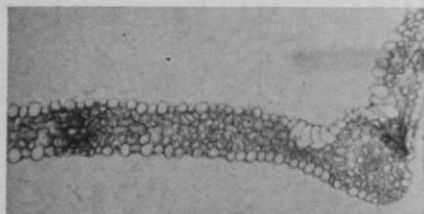


Fig. 1A — Infrequent watering, no fertilizer. (1 per cent air space — 8 days wilting).



Fig. 1B — Frequent watering, no fertilizer. (15-20 per cent air space — 6 days wilting).

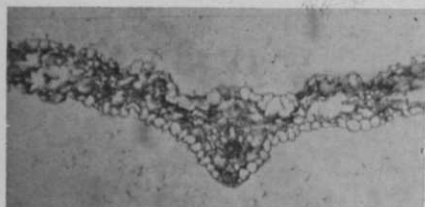


Fig. 1C — Frequent watering, added fertilizer. (50-70 per cent air space — 5 days wilting).

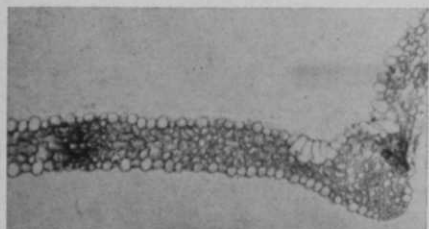


Fig. 2A — Infrequent watering, no fertilizer. (1 per cent air space — 17 days wilting).

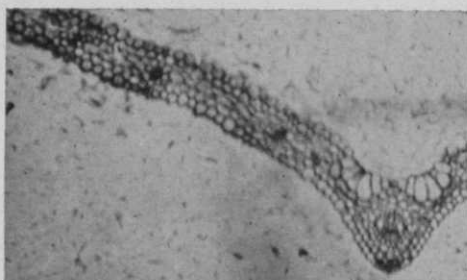


Fig. 2B — Frequent watering, no fertilizer. (5-10 per cent air space — 11 days wilting).

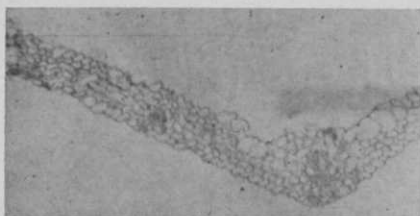


Fig. 2C — Frequent watering, added fertilizer. (20-30 per cent air space — 7 days wilting).

The infrequently watered grass, with no added fertilizer (Fig. 2), but with a wetting agent in the soil gave the same good looking compact cross section, with very little intercellular air space (1 per cent). Though the cellular structures were the same, the soil wetting agent increased the time before wilting by 100 per cent. This is due to the low tension and more available (lower energies) water that were discussed in Part 1.

The next four slides show these same points again but at a higher magnification. The captions describe the effects.

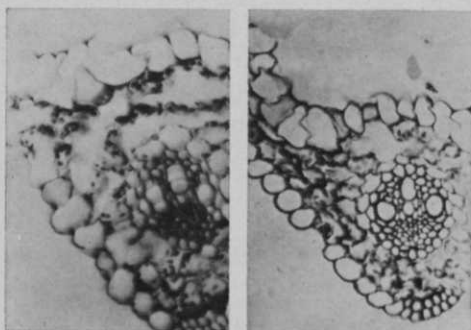


Fig. 3A (left) — No wetting agent. Note large air space, thin cell walls, cell damage by tearing and very little cutin layer. 3B (right) With wetting agent. Note less air space, thicker cell walls, no cell damage and good cutin layer (heavy black layer on the outside.)

NEW LOOK IN SIGNS

Bright, colorful, modern in design

SELECT-O-SIGNS

by STANDARD



SELECT-O-SIGNS are uniquely different. They are bright and colorful. They're modern in design. They're practical. You see, the message panels and frame are separate units. You can use two panels or one . . . use any combination of panels, and change them any time in just 3 minutes. The panels are thick, rugged plastic and the frame is anodized aluminum. Designs are artcrafted with weather proof enamel. Ask your STANDARD man to show you all ten SELECT-O-SIGNS. You'll like them.

STANDARD MANUFACTURING CO. Cedar Falls, Iowa

Want Championship Greens?



Then plant *Warren - STOLONS*
Grown on Sterilized Soil

DEFLOWERED BEFORE SEEDING TIME TO PREVENT CROSS POLLENIZATION

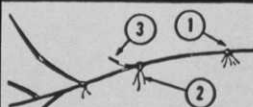
Field sterilization assures purity of strain — prevents *Poa Annua* — eliminates off-strains of Bent — kills weed seeds.

Pure strain foundation stolons grown on sterilized soil result in velvet smooth greens of uniform texture and color.

Our research has shown that when greens are grown with Bent seed, there can literally be hundreds of variations in color and texture from the same seed bag, because of the variability of seed. People illustrate this principle: a dark-haired mother and blond father could have a red-haired child.

When greens are grown from stolons, it is the same individual plants which grow again. Therefore, uniformity is maintained in color and texture of the grass.*

**For further information on this subject, check coupon.*



A WARREN CREEPING
BENT STOLON
(1) Node, (2) New Roots,
(3) New Bent Plant.

Warren's Stolons give more
nodes per bag.

Shipped anywhere on
the North American
Continent within
forty-eight hours

Golf course superintendents
from New York to California
— from Mexico to Canada
are numbered among our
satisfied customers.

Ask about our new Putting
Green Bluegrass Sod for
easier maintenance. Ideal
for Par 3 courses, home
putting greens, Motels, Clubs.

Warren's TURF NURSERY

8400 W. 111th St., Palos Park, Illinois

Send us details on beautiful, hardy, vigorous greens and tees with
Warren's Stolons • Warren' Sod

FREE LITERATURE

- "Construction and Planting of Putting Greens with Creeping Bent Sod or Stolons."
 "Genetic Variability in Creeping Bent" A study of seed versus stolons for planting putting greens.

Club Name _____

Address _____

City _____ Zone _____ State _____

Superintendent _____

For Perfect Putting-Greens
PLANT

Warren' Sod
or
Warren' STOLONS

Water is lost from the mesophyll cells into the intercellular air space (hence the desire to keep this at a minimum) and then leaves the blade of grass through a mouth-like opening called the stomata. Leaf impressions of the grass blade show these areas clearly, figure 4A and 4B. Note the size of the epidermal cells with respect to the stomata, from frequently watered grass.

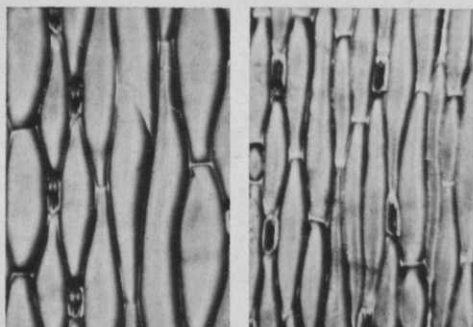


Fig. 4 Epidermal layer impressions. A (left) — Frequently watered. Note large epidermal cells (two cells per stomata.) B (right) — Infrequently watered. Note small epidermal cells (four cells per stomata.)

In figure 4B we see the impression of infrequently watered grass. Note that the stomata are the same size, but here the epidermal cells are more compact — actually twice as many per stomata. The wetting agent tended slightly to further increase the number of epidermal cells per stomata (a move in the direction of decreasing wilt). A chemical control of the stomatal opening was found and in 4B you see the results on an un-irrigated fairway. (Time: end of July, after 25 days of no rain.) The poa has gone out, the bluegrass is going dormant, the fescue has stopped growing. The treated half still had to be mowed and showed little signs of thinning.

By the use of soil wetting agents we can effectively handle water. Through a conscientious program, deeply rooted turf (figure 5 is pure poa in late July) that is uniform and pleasing can be grown in the face of bad weather and inexperienced help. So, we stress these points:

1) Soil wetting agents lower the tensions of water and permit a more rapid and more uniform infiltration, transport, and drainage (Part 1).

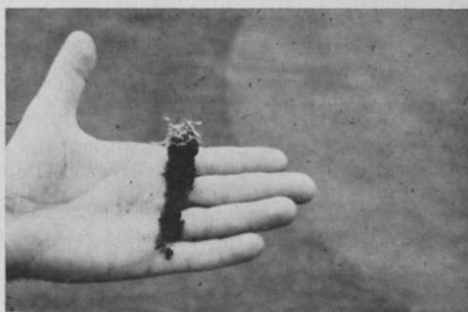


Fig. 5. Roots in pure poa annua turf from collar area of green (Time — July 18, 1963). Soil treated with wetting agents. Stomatal openings controlled chemically.

- 2) Soil wetting agents lower the soil moisture tension and, thereby increase the availability of water and nutrients (Part 1).
- 3) Lower tensions decrease the frequency of watering. Less frequent watering improves the *wilt* resistance of grasses.
- 4) Soil wetting agents decrease the intercellular air space in grass, and, thereby, improve the wilt resistance of the grass.

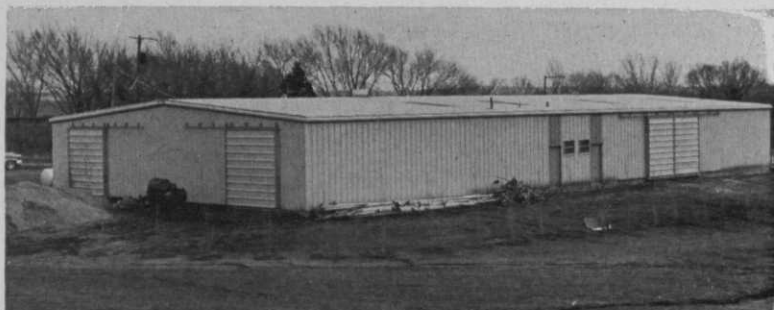
Purdue Offers 4-Year Course in Landscape Horticulture

Starting in the fall of 1964, Purdue University will offer a course in landscape horticulture. The curriculum will cover four years, according to Leslie Hafen, professor of horticulture.

Landscape horticulture is defined as the art and science of land planning and involves the arrangement of homes, subdivisions, parks, recreation centers, highways, public buildings, etc. It is rated a \$13 billion business.

The Purdue course will provide instruction in architecture, sociology, city planning, art and design and engineering. Employment opportunities for trained landscape personnel are said to be excellent. Starting salaries for graduates range from \$5,000 to \$7,000.

Information about the new curriculum can be obtained by writing to the Office of Admissions at Purdue, which is located in West Lafayette, Ind.



Supt. Decides What He Doesn't Want - Then Orders Equipment Building

In one of the most unusual real estate transactions in golf history, Kansas City's Blue Hills CC traded its 117-acre location in the city's residential area for a 156-acre site south of the city about a year ago. Along with the city's longest golf course, Blue Hills received a handsome new clubhouse, an Olympic-size swimming pool, artificially cooled ice skating rink, tennis courts, and an indoor range.

Months before the 51-year-old club moved to its new suburban location, Jerry Elmer, supt., began thinking about the type of facilities he wanted to house the men and equipment needed to maintain the new 18-hole layout.

His ideas were born of quite extensive experience. His father, H. J. (Bud) Elmer, has been a supt. in Kansas City for nearly

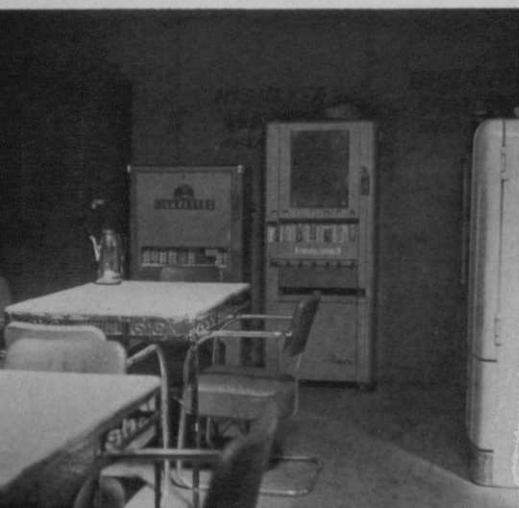
four decades and young Jerry was born into the business. At 10, Jerry was caddying and a year later he began spending the summers between school semesters working with his father. With the exception of a year at college and four years in the Air Force, Jerry has been on a golf course ever since. He became superintendent at the former Blue Hills course in 1960, moving with the club to the new location.

What He Didn't Want

To begin with, Jerry knew what he *didn't* want. He didn't want scattered buildings—one holding fertilizer, one a shop, one for mower storage. He didn't want equipment standing out in the weather, detracting from the beauty of the course and tempting the neighborhood vandals. (He used to budget for pilferage at the old course, since a lean-to shed made tires, batteries, seats, etc. a target for pilferage.)

After considerable thought, Elmer recommended to the Blue Hills directors a 7,200 square foot building offered by Butler Manufacturing Co. Its baked on colored paneling is weather resistant, reducing upkeep for years, and is unusually attractive. Its size answered Elmer's needs.

Employee lunch room in new Blue Hills maintenance building has refrigerator, coin machines, tables and chairs. Next door is a shower room.



new Royer
POWERSCREEN
mechanizes the
production of fine
top dressing



Now, preparation of the fine, uniform top dressing required for greens and tees can be a mechanized operation by using the latest of Royer's golf course-designed equipment—the POWERSCREEN. This unit combines the screening and conveying of top dressing into a one-step operation. A sloped-deck, vibrating screen prepares the fine top dressing mixture and a discharge conveyor moves the mixture away from the screen to a height convenient for either stockpiling or loading small trucks or trailers. Ruggedly constructed, the POWERSCREEN features—

- welded, tubular-steel frame
- woven-steel-wire screen with $\frac{1}{4}$ " openings (other openings available)
- portability—easily moved by one man
- troughing-type, discharge conveyor
- choice of drives—gasoline or electric
- traditional Royer low-maintenance design

Find out more about the new POWERSCREEN by sending for Bulletin PS-30.

When the POWERSCREEN is used in conjunction with a Royer Shredder, both top dressing quality and production are improved. The shredder "Royerates" the top dressing ingredients by a cleated-belt action that shreds, aerates, removes non-shreddables, and blends the ingredients to a homogeneous condition. In addition, the shredder feeds the vibrating screen at an angle and height that assures maximum production.

ROYER FOUNDRY & MACHINE CO.

ROYER

171 Pringle Street • Kingston, Pennsylvania • Export Department: 10629 S. Vernon Ave., Chicago, Illinois. Cable: ASMAN

Supt. Bud Elmer and Blue Hills maintenance employee look over equipment that has been fitted for night mowing work.

The fact that it was prefabricated and mounted to steel framing assured him of quick, economical construction. The basic price (about \$15,000) helped him sell his preference to the board.

Has 7200 Square-Foot Area

Located well away from the clubhouse, the equipment shed occupies a convenient spot on the southeast corner of the course, near a paved street. It is 120 feet long and 60 feet wide. The south half (60 by 60) is devoted to equipment parking. Two 16-foot doors allow inside parking for such heavy stuff as the club's tractors, fertilizer spreaders, and even seven gang mowers without dismantling or even detaching the mowers from a tractor.

The equipment parking area contains more than enough room to keep all equipment inside every night. Lined up against one wall are greens mowers, apron mowers, three gang professional units for tees, and reel mowers with riding sulkies. There are wall racks for countless hand tools and grass catchers.

Next to the storage area is the workshop area, approximately 30 by 40 feet in dimension. Both this room and the storage area are illuminated by four overhead skylights, giving a daylight brightness that aids both efficiency and safety. The shop is connected to the storage area by a 12-foot interior sliding door, and contains a four-foot service station-type floor drain. This permits frequent steam cleaning of equipment, reducing replacement expenses. The steam is pulled through the roof by an overhead vent.

Miscellaneous Storage

Two 20- by 30-foot rooms are at the north end of the building. One is used for the storage of a spreader, fertilizer, smaller spreaders, and miscellaneous materials such as seed. The various sacks are kept on racks off the floor. The other room was originally planned for the storage of topdressing, but Jerry is currently using it to store spraying equipment.

The floor plan allows for the comfort of the staff's ten fulltime employees and summer help. A special lunch room con-



tains tables and chairs, and candy, soft drink and cigarette machines. There is also a refrigerator. Next to this room is a locker room with two shower stalls. Linens and clean Blue Hills uniforms are kept in this area.

Since the equipment building is near the path from the 12th green and the 13th tee, two rest rooms for golfers were included on the course side of the building. This facility is in addition to the Halfway House at the ninth green.

They Take Care of Jerry

Two other rooms are worth mentioning. Elmer's office, of comfortable size and featuring a convenient stand-up planning and work table, desk, and couch, is handsomely paneled and located near the front entrance. A parts room in which an amazing number of spare parts are stored is located adjacent to the workshop.

Though the building is an attractive one and located at the far end of the course,