



**CAN YOU "FEEL" THE LENGTH OF YOUR DRIVES?** "Feel," the sensation in your hands at the moment of impact between clubhead and ball, is very important in golf. Feel tells you, even before you see the shot, whether or not you've hit the ball just right. Feel also tells you if the golf ball you're using is any good. A ball that's wound too tight or has a solid center tends to feel "rocky," whereas a rubber center or loose winding makes a ball feel "mushy." No matter how perfectly you hit these balls they don't "feel" right... and they don't "go" right either. But hit a Titleist. Hit several of them. The combination of liquid center and lively winding makes this ball feel like it's jumping off your club face. And it is! When you hit a Titleist just right, you can "feel" the extra distance. That's why more professionals and top amateurs play Titleist in major competition than any other ball. Titleist not only "feels" best but "feels" the same way every time. And remember: no one is paid to play Titleist.

## **ACUSHNET GOLF BALLS**

Sold Thru Golf Course Pro Shops Only



TRADEMARK



## SWINGING AROUND GOLF

News of the Golf  
World in Brief

By **HERB GRAFFIS**

### FRONT COVER

Cliff Roberts, Masters chairman, who was awarded the 1963 Golf Writers' Richardson trophy for his many contributions to the game of golf, gets the award from Nelson Cullenward (r) outgoing GWA president, and Joe Looney (l) vp. Presentation was made at the Masters tournament. Cullenward is with the San Francisco News-Call Bulletin and Looney, the Boston Herald.

*Bill Mark photo*

AD INDEX Page 153

EDITORIAL INDEX Page 154

Jack Kessling moves from the Indiana Lake CC to the Eldorado CC in Franklin, Ind. . . . Lowell Wilson has signed as pro at Oceana GC in Oceans, W.Va. . . . New Par-3 in Augusta, Ga., claimed to have short holes comparable to the finest par threes on regulation courses, plans league play similar to bowling matches . . . Longmeadow, Mass., has granted special zoning permit for a new course development . . . Aqua Marine Motel in Avon Lake, O., plans 18-hole course to be built this summer.

Roy Holland of the National Golf Foundation has completed a study of the proposed Alton, Ill., course . . . Construction contract for \$68,581 has been let by Beaver Hills CC in Cedar Falls, Ia. . . . Edward Packard is the architect for the Iowa course . . . Groundbreaking ceremonies for pool construction at Valparaiso (Ind.) GC went ahead in spite of late winter blizzard . . . Snow shovels were used instead of the traditional ground spade.

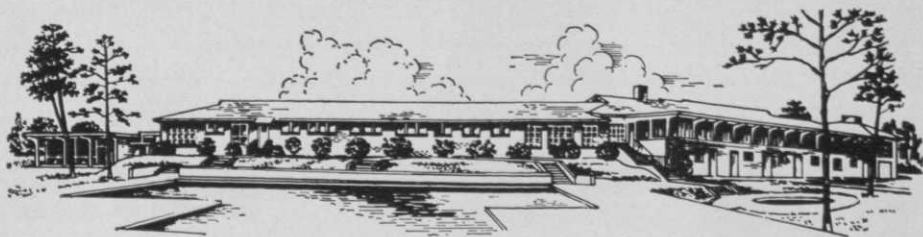
Hamden, Conn., is seeking to purchase an estate property for course development . . . Recent outcry in Clifton, Md., as result of remodeling procedures on a local clubhouse . . . It is said that contractors obscured and effaced plasterwork deemed architecturally and historically valuable . . . Pro George Corcoran has signed his seventh three-year contract at the Greensboro (S.C.) CC . . . Merion GC in Ardmore, Pa., is putting up a six-foot high chain-link fence along two miles of its 250-acre property at a cost of \$35,000.

Chuck Schafer is the new pro at Stratmoor Hills in Colorado Springs, Colo. . . . The Stratmoor 18 is a public course at the foot of the Rockies with de luxe clubhouse, lounge and bar facilities and terrific scenic views . . . Ken Johnson has signed as pro-manager at the Miami View GC in Cincinnati and will oversee the clubhouse expansion program . . . The Miami View project will enlarge clubhouse facilities to over three times their original size . . . Target date for completion is the 4th of July . . . Corry, N.Y., is hoping to meet the recommended start-



Cast iron pipe rounds a bend during extension of Vestavia's sprinkler system. Flexible joints easily adjust to rough trench conditions. No special bedding was required.

Vestavia clubhouse nestles on heavily wooded Shades Mountain. Founded in 1949, the club serves 1200 members. In addition to its 18-hole course, facilities include swimming pools, lighted tennis courts, riding stables, and a large teen-age room.



## How to irrigate a mountain golf course

Use cast iron pipe. That's what they do at Vestavia Country Club, Birmingham, Alabama. Located on picturesque Shades Mountain, the Vestavia course sits on a rocky subsurface. So rugged is this material, blasting was needed to extend the club's sprinkler system.

In terrain like this, Vestavia naturally chose cast iron pipe. Experience with their existing cast iron lines had convinced club officials. They had seen the way cast iron pipe eliminates babying and speeds installation . . . even in roughest ground. They knew that cast iron pipe easily withstands the pressure of heavy backfill and the strain of underground stresses.

With strength like this, it's no wonder cast iron pipe has such a record of durability: more than 55 U.S. cities use cast iron mains at least a century old.

Looking for irrigation systems that can take it—that cost far less in the long run? Install cast iron pipe.



### CAST IRON PIPE

THE MARK OF PIPE THAT LASTS OVER 100 YEARS

AN ASSOCIATION OF QUALITY PRODUCERS  
DEDICATED TO HIGHEST PIPE STANDARDS

Alabama Pipe Co. • American Cast Iron Pipe Co. • Glamorgan Pipe & Foundry Co. • James B. Clow & Sons, Inc. • Lone Star Steel Co. • Lynchburg Foundry Co. • McWane Cast Iron Pipe Co. • Pacific States Cast Iron Pipe Co. • United States Pipe & Foundry Co.

#### CAST IRON PIPE RESEARCH ASSOCIATION

Wallace T. Miller, Managing Director  
3440-G Prudential Plaza, Chicago 1, Illinois

Send me a copy of "Golf Course Irrigation."

Name \_\_\_\_\_

Title \_\_\_\_\_

Name of Course \_\_\_\_\_

Address \_\_\_\_\_

City \_\_\_\_\_ Zone \_\_\_\_\_ State \_\_\_\_\_

Get valuable information on planning and installation of golf course watering systems. Send for your copy of "Golf Course Irrigation," today.



ing date, June 1, for construction of munny designed by Edmund Ault, architect from Silver Springs, Md.

A motion-picture-and-computer indoor golf set-up, The Golf-O-Tron, opened in early April at Pennsauken, N.J. . . . East Islip, N.Y., is embroiled in zoning controversy in attempts to build a new 18 . . . William F. Gordon, course architect, supervised ground breaking ceremonies for Delhi, N.Y., munny . . . A \$10,000 program tourney has been scheduled at Concord CC in Concordville, Pa., to follow the Whitmarsh Open . . . Proceeds from the Concord match will go to JOB, Inc., a non-profit employment agency for the handicapped.

Alex McGukah moves from the Merion GC in Ardmore, Pa., to open the new Andorra CC in Roxborough, Pa., as head pro . . . Jack Moore replaces McGukah at Merion . . . Chuck Kuiber returns to Burden Lake G&CC near Troy, N.Y., for his second season as head pro . . . Baltimore County, Md., has approved a modest clubhouse for a public course nearing completion at Texas, Md. . . . Political row by the Baltimore County board responsible for the new course and clubhouse included usual discussion of "Golf — Luxury or Necessity?"

Carlson Farms CC, five miles north of Greensboro, N.C., has removed the barnyard animals that charmed the youngest members of the club's families and converted the two barns to more traditional club uses . . . Brookfield, Conn., has zoned the site of its new \$4,500,000 course, clubhouse, etc., for recreational use rather than commercial to avoid possible intrusion of honky-tonk atmosphere.

Nick Petrillo, new pro at the Bellport (N.Y.) GC, has scored five aces in 27 years of golf . . . Don Stephani, Bellport high school golf star, will serve as Petrillo's assistant . . . Land transfer to the Beaver Brook Land Co. has cleared the way for construction of 18-hole course at Clinton, Pa. . . . Bob Evans moves from Brandywine CC in Niles, Mich., to the head pro spot at Copeland Hills GC in Columbiana, O. . . . Pinellas County, in northern Fla., will have new course at Tierra Verde ready for 1965 play . . . Frank Murray designed and will oversee construction of the Tierra Verde project.

Two new clubs are slated for 1965 play along Long Island Sound, N.Y. . . . Mill River Club in Upper Brookville, N.Y., will be a plush setup, while Tall Trees CC in the North Suffolk sector will be a modest par-30 with room for expansion to 18 . . .

# INSIDERS\*

made the **NEW**



**DU PONT**  
**NYLON CENTER\***  
PATENT NO. 3,053,539

The greatest advancement ever made in golf ball construction . . . the secret is in the DUPONT NYLON center which develops fantastic initial velocity and gives RAM the extra push that sends it up to 25 yards further. conforms to U.S.G.A. specifications.

**JUST WAIT TILL YOU PLAY IT!**

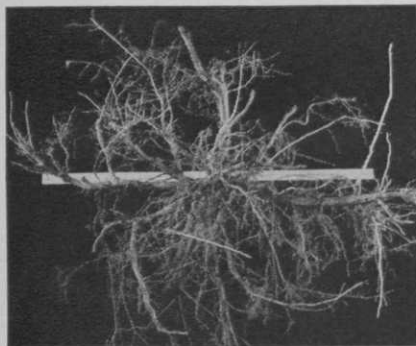


**RAM**

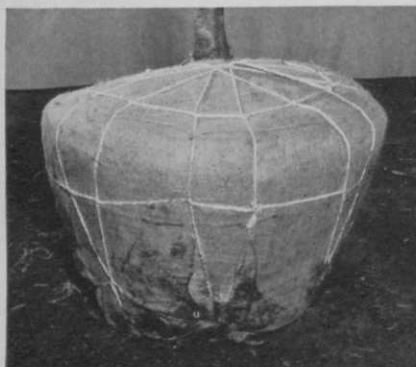
350 FIFTH AVE. NEW YORK, N.Y.

EXCLUSIVE NATIONAL SALES REPRESENTATIVES: GREEN TEE ASSOCIATES, INC.

**SOLD THROUGH YOUR GOLF PROFESSIONAL SHOP ONLY**



**SUPERIOR, COMPACT ROOT SYSTEM** of this root-pruned Cole tree will get it off to a good start in your planting. Yardstick in this "worm's-eye view" shows typical size of roots on a 1½" caliper Green Ash.



**SOLID, SUPERIOR 30" BALL** on this 2½ to 3" caliper Cole Sunburst Locust (P.P. 1313) protects it from nursery to planting. Note careful covering and lacing.

**These are some of the reasons you get superior, strong, healthy trees and plants in good condition from Ohio's largest wholesale nursery.**

**THE COLE NURSERY COMPANY**

Phone: A/C 216-352-3121

HEADQUARTERS: 2000 W. Jackson St., Palmsville, Ohio  
CIRCLEVILLE DIVISION: Old Route 23, Circleville, Ohio

Merrywood CC, a 27-hole course at Smithtown, N.Y., has established a minimum fine of \$25 for golfers who fail to repair divots or who drag golf carts on greens and tees.

**The Waldemar Open at Tam O'Shanter CC** in Brookville, N.Y., will have auxiliary events at several Westchester and Long Island clubs . . . Proceeds from the Waldemar tourney and tie-in competitions will go to the Waldemar Medical Research Fund . . . Geoffrey Cornish, course architect, will re-design the Westwood CC course in Vienna, Va. . . . Ernie Geradi has signed with the Shenecossett CC in New London, Conn., as head pro.

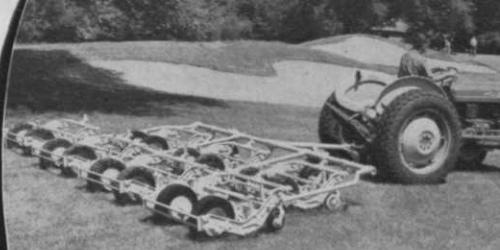
**Cherokee Country Club in Jacksonville, Tex.**, began construction on Friday the 13th, in March, with Pro John Lively, Jr., and Architect Carl Gregory among the ground breaking officials . . . Town'n CC of Strongsville, O., was sold at a sheriff's auction for \$590,000 to a local savings and loan firm . . . The appraised value of the Strongsville club was \$877,300, but the purchaser had granted a 1960 mortgage of \$690,000, and delinquent taxes are \$265,000 . . . Changeover of ownership is not expected to affect usual business procedures, according to Town'n CC manager, Jim Cottrell.

**New Canaan, Conn.**, has approved zoning changes to clear the way for Brae Loch CC construction . . . Daytona GC, a 9-hole layout, opens this spring in Hennepin County, Minn. . . . Improvement program of \$12,000 has been approved for the Lake City (S.C.) CC to put clubhouse in top recreational shape . . . Lake City has a 9-hole course and swimming pool . . . Improvements will include recreation room with table tennis and other indoor sport facilities plus enlarged pro shop and lounge.

**FHA insured loan of \$190,000 for the Skenandoa Club** in Clinton, N.Y., gives financial backing to another golf course in upstate N.Y. . . . Skenandoa facilities will include 18, two tennis courts, pool and clubhouse . . . The Clinton club has been in existence some 75 years and the new facilities will be ready by the spring of 1965 . . . Wee-Ma-Tuk Hills CC in Havana, Ill., has okayed plans for swim-

# 1. REAR WHEEL DRIVE

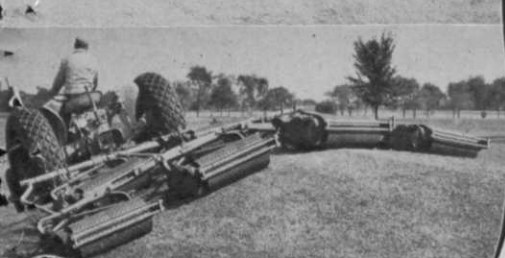
Roseman Rear Wheel Drive permits overhanging of traps and bunkers and trimming close to trees, no side wheel marks. Laminated puncture-proof tires overcome objectionable bouncing of pneumatic tires. The caterpillar-action of laminated tires give non skid traction, making it possible to mow heaviest turf growths. Rear Wheel Drive available in Rough or Fairway mower.



# 2 REASONS ROSEMAN IS FIRST IN MOWING PERFECTION

# 2. HOLLOW ROLLER DRIVE

Roseman Hollow-Roller mowers place less weight p.s.i. on turf than any other type. Less compaction results. Hollow drum design permits mowing on soft or sandy soils and on wet fairways with no wheel marks. Improved turf, better playing surfaces and finer finished cut result. All putting greens are cut with rear roller drive mowers. Why not give your fairways putting green treatment?



ROSEMAN Mower Corp. • 2300 W. Lake Ave., Glenview, Ill.

Please send me literature, prices and specifications on Roseman Gang Mowers. I am especially interested in the following models

- |   |  |
|---|--|
| <input type="checkbox"/> Mark IV Fairway Mower          | <input type="checkbox"/> Hollow Roller Drive Fairway Mower |
| <input type="checkbox"/> Rear Wheel Drive Fairway Mower | <input type="checkbox"/> Hi-Cut Rough Mower                |

Name \_\_\_\_\_

Position \_\_\_\_\_ Club \_\_\_\_\_

Address \_\_\_\_\_

City \_\_\_\_\_ State \_\_\_\_\_



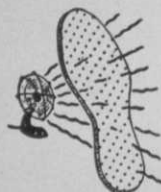
**ROSEMAN MOWER CORPORATION**  
2300 WEST LAKE AVENUE  
GLENVIEW, ILLINOIS

Nation-Wide Sales and Service



# Extra Profit

LIKE  
WALKING  
ON  
PILLOWS!



*Air-Cooled!  
Air-Ventilated!  
Air-Cushioned!*

## Dr. Scholl's AIR-PILLO INSOLES

Made of soft Latex Foam. No adhesive. Convert any shoe into an air-cushioned shoe for only 60¢!

### 3 PAIRS FREE!

With a 3 dozen assortment of men's and women's sizes you get 3 pairs FREE if you order promptly. Packed in metal counter display dispenser. Each pair cellophane wrapped. Men's 7, 8, 9, 10, 11, 12 and Women's 5, 6, 7, 8, 9. Retail 60¢ a pair.



**YOUR COST \$14.40. YOUR PROFIT \$9.00**

Nationally advertised in THE SATURDAY EVENING POST, THIS WEEK, DELL MODERN GROUP and PARADE.

**SELL ON SIGHT!**

Mail your order today!

**THE SCHOLL MFG. CO., INC.**  
213 W. SCHILLER ST., CHICAGO 10, ILL.  
62 W. 14th ST., NEW YORK 11, N. Y.

ming pool, bathhouse and wading pools to increase current facilities which include a 9-hole course, stocked lakes and areas for boating and water skiing . . . Kanawha County, West Va., has named Jim Evans manager of its new public 18 opening in mid-May.

Fairfax County, Va., Planning Commission did a double-take and decided to add recommendation for 18-hole course to approved 1964 Public Facilities plan . . . Wayne, N.J., voted out zoning restrictions to permit Pakanack Lake CC to build 9-hole course and two baseball fields.

Edwin Logue is organizing an Arnold Palmer golf center in Springfield, O. . . The center is to include driving range and a course with nine par three holes and nine par fours . . . Part of \$1,900,000 bond issue to be voted on in Harlingen, Tex., will include \$125,000 for course improvement and clubhouse construction . . . Private developers are seeking zoning changes for golf club in Bernardsville, N.J. . . . Two 18-hole courses, a ski lift, swimming pool and lakes are planned for the Goose Mountain Park near Chester, N.Y.

Daytona Beach, Fla., city officials reported a deadlock in vote to okay land lease for compact course on City Airport property . . . Oakwood Club in Cleveland, O., has hired Earl Roy, a 17-year teaching veteran, as assistant pro . . . Architect Joe Finer and Pro Bob Riegle are building 18 in Houston, Tex. . . . Billy Farrell, son of former U.S. Open champion, Johnny, takes over as head pro at the new Stanwich Club in upstate N.Y. . . . Johnny's other son, Jimmy, takes over the Equinox GC pro shop at Manchester, Vt., this spring . . . Step by step plans for muni in Middletown, N.Y., have been presented to the city's recreation commission . . . Bob Grant moves from Runaway Brook CC in Bolton, Mass., to succeed retiring Woodbridge CC supt. Anthony Longo in New Haven, Conn.

Schenectady, N.Y., reports land purchases for new course by the Ponderosa GC and the Edison Club . . . Local sportsman, Gino Turchi, has announced plans for 18 in nearby Elnora . . . Rudy Goff, former pro at Stockbridge takes over the