



OLD STANDARD

Square toe and heel and flat top on blade.

STANDARD MODEL

Has tapered or pointed toe and heel and crowned top blade.

HEAVY BLADE

The original Bull's Eye model . . . slightly thicker blade for the player who prefers a little more head weight.

LIGHT BLADE

A slender, narrow blade, just a bit lighter in weight with blunt toe and heel and flat top. A very popular model.

OFF SET

A beautiful new model with a slight off set in the hosel. Puts you "right over the ball."

PICK THE BULL'S EYE PUTTER THAT WORKS FOR YOU

Bull's Eye is not just the name of a putter — it's a whole line of putters. There are five different Bull's Eye heads, for instance, each with a subtle difference in weight and feel. □ Your player can pick his own combination of head shape, weight, lie and grip to fit his stance, his stroke and the speed of the greens he usually plays. As a matter of fact, many professionals and top amateurs (and more of them use the Bull's Eye in major competition than any other putter) have more than one Bull's Eye; to suit their mood or varying course conditions. □ Bull's Eyes are the most imitated putters in the world, but no others compare because each Bull's Eye is a hand-forged, hand-finished original.

AGUSHNET GOLF EQUIPMENT Sold the World Over Thru Golf Course Pro Shops Only.



TRADEMARK



SWINGING AROUND GOLF

News of the Golf
World in Brief

By **HERB GRAFFIS**

FRONT COVER

Venerable Joe Valentine looks very well pleased to be receiving the USGA's fourth green section award for distinguished work with turfgrass, but possibly not nearly so much as his son, Dick. The latter has reason to be proud of the old gentleman, who is 78, served as supt. at Merion GC in Ardmore, Pa., for 50 years, and discovered Merion bluegrass. Dick succeeded his dad at the Pennsylvania club in 1961.

See page 70

AD INDEX — 208-209

EDITORIAL INDEX — 210

Dave and Jack McIntosh, owners of Oak Hills GC in Palos Park, Ill., recently bought the Peach Valley GC in Spartanburg, S. C. . . . Improvements on the 18-hole course and driving range include a lighted chip and putt area . . . Bob Burchette stays on at Peach Valley as pro-manager . . . Art Elwood has moved from the pro spot at Yardley (Pa.) GC to the new Shepherd Hill CC in Allentown, Pa., as pro-manager.

Walhalla G&CC, near Schenectady, N.Y., is being laid out with an eye toward luxury . . . The course which is scheduled to open in 1965 is rated among the top 10 in the Northeast by its architect, Bill Mitchell . . . White Deer CC, now being built near Williamsport, Pa., plans a clubhouse to increase recreation facilities . . . Gigantic clubhouse rebuilding project at Edgewood CC in Pittsburgh, Pa. is nearing completion.

The Crestwood CC in Watertown, Conn. recently lost its head pro, Mickey Gresh . . . Gresh, who opened Crestwood, has returned to Wethersfield (Conn.) CC as assistant to Bob Schappa . . . New Vacation-home resort on Indian Mountain Lake near Kresgeville, Pa., will include 9-hole layout . . . Arnolda Ranch CC, near Petersburg, Va., is the 113th course construction by Phil Ball, engineer, and Mac McCuiston, course architect . . . Burlington (Ia.) GC's remodeled clubhouse should be ready this spring . . . The facelifting job ran to \$194,000 . . . New course near Holland, Mich. will open as soon as the turf is ready, probably sometime in June . . . Mike Haywood, Madison (Ind.) CC pro, is pushing for a 9-hole public course for his community . . . Haywood feels increased golf activity in Madison won't hurt the private club.

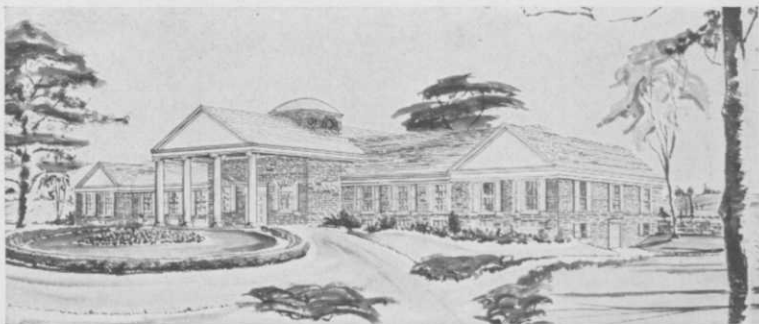
Discussion in Highland, N.Y. early last month centered around land offered by Walter Seaman for development of a golf course . . . Interested Highlanders are considering a muni layout backed by FHA funds or a membership club . . . Ahead of the work schedule is the construction of the Piney Point GC near Norwood, N.C. . . . It should be open about July . . . The course is near completion and clubhouse and pool construction will start as soon as weather permits . . . Crasdaile,

Feats of strength at
Long Grove Country Club,
Illinois...

CAST IRON PIPE
starts its work
above ground



Architect's rendering of Long Grove clubhouse. Scheduled for summer completion, this Illinois club covers 170 acres, includes an 18-hole, par 72 golf course among its facilities. Course architect is Robert Bruce Harris, Chicago.



In building Long Grove Country Club, the contractor faced two initial problems: (1) drain a large swamp (2) create a 10'-deep, seven acre lake. The answer: move the swamp water to the lake excavation. Use some of the club's newly-arrived cast iron pipe to do the job.

Two men quickly assembled 1200' of 6" cast iron pipe, running it over a 30' hill and linking swamp and lake areas. Pump hookup was made. Six weeks later: a new lake; no swamp.

Cast iron pipe had just begun. Three hours after the drainage job was completed the entire line had been disassembled, ready for permanent installation below ground as part of a modern irrigation system.

As the contractor (Maddox Construction Co., Batavia, Ill.) pointed out, only cast iron offered the right combination of strength and design features for this dual service job. No need for babying . . . quick assembly . . . tight joints.

Good reasons why Long Grove Country Club is dollars ahead with cast iron pipe. Now and for a century to come.

AN ASSOCIATION OF QUALITY PRODUCERS DEDICATED TO HIGHEST PIPE STANDARDS
Alabama Pipe Co. • American Cast Iron Pipe Co. • Glamorgan Pipe & Foundry Co. • James B. Clow & Sons, Inc. • Lone Star Steel Co. • Lynchburg Foundry Co. • McWane Cast Iron Pipe Co. • Pacific States Cast Iron Pipe Co. • United States Pipe & Foundry Co.

Get this "best seller" free

Mail the coupon for your copy of "Golf Course Irrigation." This popular 20-page brochure is fully illustrated, offers a wealth of facts on planning, installation and operation of watering systems.



CAST IRON PIPE

THE MARK OF PIPE THAT LASTS OVER 100 YEARS

CAST IRON PIPE RESEARCH ASSOCIATION

Wallace T. Miller, Managing Director
3440-G Prudential Plaza, Chicago 1, Illinois

Send copy of booklet, "Golf Course Irrigation."

Name _____
Position _____
Name of Course _____
Address _____
City _____ Zone _____ State _____



a 500-acre, \$20-million development northwest of Durham, N.C., begins construction of an 18-hole layout later this month . . . Course is first step in complex of recreation facilities, shopping center and homes scheduled to be built over 10 years . . . A unique 19th hole located in existing twin silos is planned.

Jimmy Demaret wants to build a 36-hole course in Harris County near Houston, Tex. . . . The plan, pending court approval, is for the county to apply to Washington to use the proposed site for development rights and then to lease the land to Demaret . . . Harris County stands to earn an estimated \$127,800 in seven years without obligating taxpayers or using public funds . . . Wyckoff Park G&CC in Holyoke, Mass. is facing rough times . . . New highway construction scheduled for 1965 will reduce grounds from 110 to 85 or 90 acres . . . Marco Marinello, club president, is trying to find a way out . . . Wyckoff, Holyoke's only 18, has housing developments and highways on three sides and a community reservoir on the fourth . . . Proposed new layout on remaining land would result in an exorbitant expenditure.

In an era of 21-gun salutes for every new course, clubhouse, resort and locker-room improvement, it's refreshing to be surprised by a new club opening with the course and clubhouse complete and ready for play . . . In Houston, Noble Ginther carved a new 18 out of his family's game preserve without a whisper to local residents or the press . . . Five months of construction work that created a million-dollar layout went almost unnoticed . . . The surprise unveiling of the George Fazio and Jay Riviere designed course came in late January.

After viewing diagrams of Ginther's course in downtown Houston, the press corps was taken by police-escorted shuttle bus to the new El Dorado CC . . . As the bus moved along the Eastex Freeway, billboards were being erected to start a membership drive for 750 . . . Ginther's plans for the future include housing developments and a race track to match New York's Aqueduct or Los Angeles' Hollywood Park . . . The El Dorado pro is Bill Stephens.

Construction of additional nine at McKinney, Tex. muni is slated for 1964 . . . Lake Bluff, Ill. proposes to use the community's Rockland Park site for new 18 . . . Residents of Dover, Mass., in an ef-

fort to preserve the country climate of their community, have raised \$200,000 and purchased 97 acres from a development contractor . . . Plans are for an 18-hole course on the site . . . New causeway development in Texas City, Tex. on the Gulf of Mexico, include homesites, marina, and combination yacht club and golf course . . . Sidney, O. is considering a muni 18 northeast of the city to serve Shelby county residents . . . Petition circulators in Valpariso, Ind. are fighting proposed \$175,000 bond issue to expand the Forest Park muni nine through purchase of adjacent land.

New York state is moving along on acquisition of land to form Braddock Bay State Park on Lake Ontario near Rochester . . . Present facilities include a parking lot, picnic tables and restrooms . . . Proposed park will have 18-hole course, marinas, bathing beaches and a refuge harbor . . . Petitions are going the rounds in Lamesa, Tex. to garner support for 9-hole muni course at cost of \$45,000. . . . No opposition was voiced in the Clio, Mich. rezoning of residential land to commercial use as an 18-hole course . . . Birmingham (Ala.) CC is remodeling clubhouse to better serve its 1600 members . . . Wallingford (Conn.) CC plans \$100,000 expansion of course and clubhouse . . . Crystal Lake CC in Clinton, La. is swapping land with a real estate developer . . . Club gets seven new holes and the developer gets seven old ones.

Marlon Smith is the new Ozona (Tex.) CC pro . . . New nine added to Redland CC in Homestead, Fla. . . . Shepard Hills CC, near Waverly, N.Y., has acquired land for expansion to 18 this spring . . . Riverside GC in Central City, Nebr., plans to finish its new clubhouse by next winter . . .

Bob Clare is the pro at the new Gray Oaks CC, La Verne, Calif. . . . The course starts out with nine holes smuggled in a canyon . . . Construction of second nine and clubhouse starts this spring . . . Ridgewood CC in Waco, Tex. has okayed a \$750,000 clubhouse including three swimming pools . . . Completion date is set for May 31 . . . Waco architects Bush & Witt and Robert S. Bennet drew the plans for the two-level, modern, stone and glass structure . . . Cherokee CC in Jacksonville, Tex. is starting a new clubhouse . . . Prior to campaign for 200 new members, Cherokee had signed up 89 . . . Husum Hills GC, near White Salmon,

the **SECRET** * of the **NEW**



DUPONT
NYLON CENTER *
PATENT NO. 3,053,539

The greatest advancement ever made in golf ball construction . . . the secret is in the DUPONT NYLON center which develops fantastic initial velocity and gives RAM the extra push that sends it up to 25 yards further.
conforms to U.S.G.A. specifications.

JUST WAIT TILL YOU PLAY IT !



350 FIFTH AVE. NEW YORK, N.Y.

EXCLUSIVE NATIONAL SALES REPRESENTATIVES: GREEN TEE ASSOCIATES, INC.

SOLD THROUGH YOUR GOLF PROFESSIONAL SHOP ONLY

Wash., is attempting to raise \$75,000 to complete a course and clubhouse . . . At present only the water system is complete.

Dale Kraemer is the new Glendora (Calif.) CC manager . . . Ray Helmy, pro at Cold Springs G&CC in Plaserville, Calif., is getting a new pro shop as part of a new \$60,000 clubhouse . . . New CC in Dresden, Tenn. to be built for \$125,000 with nine-hole course, swimming pool, tennis court and clubhouse . . . Los Coyotes CC re-opened its clubhouse facilities late in Jan. . . . The original structure was razed by fire in Nov., 1962 . . . The purse for the Twelfth Annual Tournament of Champions (Apr. 30 — May 3) at Desert Inn CC in Las Vegas, Nev., has been raised from last year's \$60,000 to \$65,000.

The Illinois Women's Golf Association has scheduled its State Amateur Invitation for June 15-19 at the Quincy (Ill.) CC and the Three Day Stroke Play Invitation for Aug. 4-6 at Mauh-Nah-Tee-See CC in Rockford. . . . The Women's Open Championship is set for July 9-11 at San Diego CC in Chula Vista, Calif. . . . The 1965 site is the Atlantic City CC in Northfield, N.J. . . . In 1966 the distaff golfers will meet at the Hazelton National GC in Chaska, Minn.

Miami Lakes CC in Miami, Fla., has given the go-ahead to Florida architects, Robert M. Little and Marion Manley, for a new clubhouse . . . The completion target date is Nov. 15 . . . Businessmen's grill and accommodations for overnight, weekend and week-long guests will be included . . . Harold Weston three-time past president of the Pacific Northwest Golf Association, was given the George Bertz memorial golf award at the annual Hayward banquet of champions . . . Weston was instrumental in establishing the Chick Evans scholarship for caddies in the Northwest and Western Canada . . . Zell Eaton, pro at the Palm Springs (Calif.) GC, reported an increase of 611 golfers this Jan. over last . . . Also, the fiscal accumulation for 1964 is \$2,456 greater than last year.

Bill Livingston takes over this month as supt. of Fred Waring's Shawnee-on-Delaware courses in Stroudsburg, Pa. . . . Livingston formerly was greenmaster at Silver Spring in Ridgefield, Conn. . . . Joe Dinelli, supt. at North Shore CC, Highland Park, Ill., estimates that about 20 per cent of his members attended the Open House equipment show he held in

PGA Tournaments

- | | |
|------|--|
| Mar. | 12-15—St. Petersburg Open, Lakewood CC \$25,000 |
| | 19-22—Doral Open, Doral CC, Miami \$50,000 |
| | 26-29—Azalea Open, Cape Fear CC, Wilmington, N.C. \$20,000 |
| Apr. | 2-5—Greater Greensboro (N.C.) Open, Sedgefield CC \$35,000 |
| | 9-12—Masters, Augusta National \$20,000 (minimum) |
| | 16-19—Houston Classic, Sharpstown CC \$50,000 |
| | 23-26—Texas Open Inv., Oak Hills CC, San Antonio, Tex. \$40,000 |
| | 30-May 3—Tournament of Champions, Desert Inn CC, Las Vegas, Nev. \$65,000 |
| | 30-May 3—Waco Turner Open Inv., Turner CC, Burneyville, Okla. \$20,000 |
| May | 7-10—Colonial National Inv., Colonial CC, Ft. Worth, Tex. \$75,000 |
| | 14-17—Oklahoma City Open, Quail Creek CC, \$35,000 |
| | 21-24—Memphis Open Inv., Colonial CC, \$50,000 |
| | 27-31—"500" Festival Open Inv. Speedway (Ind.) GC \$70,000 |
| June | 4-7—Thunderbird Classic, Westchester CC, Rye, N.Y. \$100,000 |
| | 11-14—Buick Open, Warwick Hills CC, Grand Blanc, Mich. \$55,000 |
| | 18-20—USGA Open, Congressional CC, Washington, D.C. \$90,000 |
| | 25-28—Cleveland Open, Highland Park CC, \$100,000 |
| July | 2-5—Whitemarsh Open, Whitemarsh CC, Philadelphia Pa. \$125,000 |
| | 9-12—open |
| | 16-19—PGA Championship, Columbus (O.) CC \$50,000 (minimum) |
| | 23-26—Insurance City Open, Wethersfield (Conn.) CC \$50,000 |
| | 30-Aug. 2—Canadian Open, Pine Grove CC, St. Luc, P.Q. \$50,000 |
| Aug. | 6-9—Western Open, Tam O'Shanter CC, Niles, Ill. \$50,000 (minimum) |
| | 10—Children's Memorial Hospital Pro-Am, Onwentsia Club, Lake Forest, Ill. \$12,000 |
| | 13-16—St. Paul Open, Keller GC, Purse to be announced |
| | 20-23—American Golf Classic, Firestone CC, Akron, O. \$50,000 |
| | 27-30—Carling World Open, Oakland Hills CC, Birmingham, Mich. \$200,000 |
-

his maintenance building in late January . . . Gordon Leishman moves from pro post at River Road CC in Louisville to Idle Hour in Lexington, Ky.

Pro spot at Plainfield (N.J.) CC was left vacant when Bill Moran joined A. G.

Spalding & Bros. in Philadelphia, Pa. . . . Ray Ferguson succeeds Art Weber as head pro at North Jersey CC in Wayne, N.J. . . . Winged Foot CC, Mamaroneck, N.Y. will be site of the 16th National Amputee Golf Association championship, August 19-22 . . . Wally Baskovitch is the defending champion.

Chances are against Arnie Palmer, or any other pro, matching Arnie's \$128,000 record winnings . . . It's not a matter of loss of skill, but the new PGA purse distribution schedule is designed to give the low 40 (instead of the low 50) a greater share of the purse . . . For instance, at the \$50,000 Los Angeles Open Paul Harney won \$7,500 instead of \$9,000 and runnerup Bobby Nichols went home with \$4,000 instead of \$4,600 . . . Players toward the middle of the prize list, though, received up to \$100 more than usual.

USGA's 70th annual meeting in New York jacked the prize money for the Open to about \$95,000 . . . Charley Coe of Oklahoma City, twice Amateur champion, a member of six Walker Cup teams and twice a runnerup in the Masters, received the USGA's Bobby Jones Award for "distinguished sportsmanship" . . . The September USGA Amateur championship at Canterbury CC in Cleveland, O. will limit opening day match play participants to 150 . . . Lloyd Monroe, N.J. amateur champ in 1958 and 1962, joins Stan Mosel as assistant pro at Essex Fells CC, Essex Fells, N.J.

Jean Mulkeen, member of the Ladies PGA since 1957 is the new head pro at Florissant Valley CC near St. Louis, Mo. . . . Doral CC in Miami, Fla. will be the site of the National Amateur Tournament of Champions, June 23-27 . . . Sime Braio, supt. at Worcester (Mass.) CC, has retired after 42 years of service . . . New supt. is John Almonte . . . Fred Seitz has moved from the Oakmont (Pa.) CC to manage the Sunnehanna CC in Johnstown, Pa. . . . Senior Women's Amateur Championship is slated for Oct. 14-16 at the Del Paso CC in Sacramento, Calif. . . . The 1965 Senior Women's is scheduled for Exmoor CC in Highland Park, Ill.

Bob Baldock, course architect operating out of Fresno, Calif. plans 1964 construction of nine sites, all in states west of the Rockies . . . George Wesley Walton has contracted to build a new nine for Senior citizens at Temelec, Sonoma

ASK THE PRO... HE'S IN THE KNOW!

From golf swings to golf slacks, golf clubs to golf shirts . . . the pro has the answer.

Di Fini

GOLF ENSEMBLES FOR MEN AND
WOMEN ARE COMFORT-DESIGNED
FOR ACTION
GOLFERS!



Impeccably tailored golf and après-golf wear . . . Slacks, Shirts, Sweaters, Bermudas and Culottes . . . finest domestic and imported fabrics including full-fashion Banlon, Dacron-Cotton Knits and many others equally as important . . . that's DiFini for '64. See these fashionable color-coordinated, mix 'n match styles today. In Pro Shops coast-to-coast.

Di Fini
ORIGINALS

Shirts and Sweaters by
DIFINI KNITWEAR, LTD.
New York

County, Calif. . . . Guy Paulsen moves west from the pro spot at Old Elm CC in Chicago to the new Shorecliffs CC in San Clemente, Calif. . . . Joe Williams, who designed the Shorecliffs course, is staying on as supt.

New residential site is being developed on a 515-acre tract in Chester County, Pa. . . . 18-hole course was designed by Alfred Tull . . . Other recreation facilities include swimming pool, tennis courts, stable and bridle paths . . . The former Gilber Mather colonial mansion is scheduled for remodeling to serve as a clubhouse for the development.

The Pee Wee golf championship is all set for its 18th annual renewal at Rio Pinar CC in Orlando, Fla. . . . Youngsters from 3 to 15 can enter free of charge . . . There are five divisions . . . The contest was organized by the Orlando Daily Newspapers, Inc. and is now sponsored by the Greater Orlando Chamber of Commerce and Minute Maid Company.

Veteran Maurie Luxford again did a marvelous job in conducting Bing Crosby's 1964 tournament . . . Over \$200,000 was donated to youth welfare causes and \$55,000 was set aside as pro money . . . More than \$1¼ million has been given to youth welfare operations from Bing's tournament since it has been held on the Monterey peninsula courses . . . Bing's tax situation, his brother Larry's business savvy, Maurie Luxford's superb diplomacy in handling the amateur invitations and other expert free services have made the Clambake the great affair it is.

Terry McCann now director of Youth-Sports Development program of United States Junior Chamber of Commerce, which puts on the nation's largest junior golf championship . . . It gets about 25,000 entries . . . Pepsi-Cola contributes \$20,000 a year to the program . . . Paul Scott, formerly Jaycee Youth Sports director, now is assistant to minister of First Christian Church at Tulsa.

At the New York Golf Writers' annual dinner, Willie Turnesa in accepting an award the writers bestowed on the "First Family of Golf," said that his five brothers and their father had been "gainfully" employed in golf for 290 years . . . Willie, the amateur of a grand family, made another fine talk at the USGA green section meeting . . . He jolted the meeting by remarking that putting requires the least amount of golfing talent . . . Willie add-

Ladies PGA Tournaments

-
- Mar. 19-22—Women's Western Open, Scenic Hills CC, Pensacola, Fla. \$7,500
 - 26-29—Open
 - Apr. 2-5—St. Petersburg (Fla.) Women's Open, Sunset GC, \$10,000
 - 10-12—Baton Rouge (La.) Ladies' Open, Sherwood Forest CC, \$7,500
 - 17-19—Peach Blossom Open, Spartanburg (S. C.) CC, \$7,500
 - 23-26—Titleholders Championship, Augusta CC, Augusta, Ga. \$7,500 (minimum)
 - May 1-3—Civitan Open, Alexandria G&CC, Alexandria, La. \$8,000
 - 8-10—Squirt Ladies' Open, Glen Echo CC, St. Louis, Mo., \$12,500
 - 15-17—Civitan Open, Muskogee (Okla.) CC, \$8,000
 - 21-24—Civitan Open, Glen Lakes CC, Dallas, Tex. \$12,500
 - 29-31—Babe Zaharias Open, Beaumont (Tex.) CC, \$8,500
 - June 5-7—To be announced
 - 12-14—Sponsor to be announced, Turf Valley CC, Ellicott City, Md. \$10,000
 - 19-21—Lady Carling Eastern Open, Pleasant Valley CC, Worcester, Mass. \$10,000 (minimum)
 - 26-28—To be announced
-

ed that achievements of course supts. in vast improvement of putting surfaces accounts for a great deal of the improvement in tournament scoring . . . Now 30 to 32 putts a round are about "par" for the pro who's going to win much money in tournaments, Willie said . . . He also said that a bad lie on a fairway doesn't bother the expert golfer unless he happens to miss the shot . . . then, of course, he blames the supt.

Fred Corcoran is writing his memoirs . . . They should make a lively story of the growing-up period of golf . . . Fred followed Bob Harlow as PGA Tournament Bureau manager . . . With Fred, tournament golf expanded into big business . . . The International Golf Assn. and the Teacher's Trophy international ideas . . . He started tournament business for the Ladies PGA and managed Sam Snead, Ted Williams and Stan Musial into big money . . . Glen (Bud) Harvey is aiding Corcoran in his literary labor pain.

John Derr, former director of sports for CBS, has dropped his longtime position as press aide to Arthur Godfrey . . .