



Today's hallmark of quality!

Golfers recognize BURGETT quality by sight.

Stock and sell the full line: Parglov,

Par-D-Lux golf gloves; Parhood club covers.

Full range of price and style. Shipped ready for display.

• Write for colorful complete line brochure.

K.L. Burgett CO

PEORIA, ILLINOIS



Rogers Mfg. Co., Inc. 202 N. MAHAFFIE
OLATHE, KANSAS

Crowley Ridge CC in Wynne, Ark. began construction of clubhouse late last month . . . The new Twin Oaks G&CC has purchased land near Winnsboro, La., for course development . . . Jim Hynds, pro at Marysville, Wash. course and Tom O'Neil, course supt. in suburban Seattle, have purchased the Evergreen GC near Mount Angel, Oreg. . . Bay City (Tex.) CC clubhouse destroyed by fire late in Jan. . . Estimated damage was \$150,000 . . . Beaver Brook GC slated to open near Clinton, N.J. during 1965 . . . Meadow Brook muni in Lubbock, Tex. is building an additional nine . . . Siesta Key Par-3 course near Sarasota, Fla. was opened early in Feb. . . Housing subdivision, including 18-hole course and swimming pool, is planned near Frankfort, Ky. . . Twin Brook Golf Center at New Shrewsbury, N.J. is slated to open May 30.

Five-hundred thousand dollar Dolphin Club in Anderson, Ind. will include course, clubhouse, pool and picnic area . . . Grand Forks (N.D.) CC changes name to River Bend CC as of June 1 . . . Old Studebaker proving grounds in South Bend, Ind. are slated for a recreation center including golf course, auto racing track and ski slope . . . Beverly, Mass., contemplating sale of muni 18 to private syndicate . . . Arkansas state parks commission has accepted a 600-acre site on DeGray Lake from Army engineers . . . To be included in the new park are an air strip, an 18-hole course, lodge and picnic and camping areas.

Wood River, Ill. has okayed bond issue for golf course . . . Ernest Yelton is seeking permission of zoning board to develop course in Pittsboro, Ind. . . Plans for development of an 18 in Jester Park, northwest of Des Moines, Ia., were approved early in Feb. . . Tony Marlowe, assistant at Woodmont CC in Rockville, Md., has signed as head pro at Bellaire CC in Armonk, N.Y. . . Construction of 3 Pines GC near Woodruff, S. C. begins as soon as weather permits . . . New club at High Point, N.C. is site of projected 18.

A. R. Twombly is the new supt. at North Hills CC in Manhasset, R.I., N.Y. . . Corry (Pa.) CC has signed John Capebianco as head pro and supt. . . Berks County, Pa. is adding lighted 18-hole Par-3 to its public golf setup . . .

MOODY

"Rainmaster"

Better Turf
Through
Better
Sprinkling

MOODY

"Rainmaster"

MOODY SPRINKLER COMPANY, INC.
P.O. Box 240, Arcadia, California

Jimmy Hightower moves from the pro spot at River Road CC in Poolesville, Md. to head pro position at the new Northwest Park public course in Maryland near Washington, D.C. . . . Construction of new munny in Mesquite, Tex. has been given the go-ahead . . . Tanglewood, in Clemmons, N.C. is adding nine to its present 18 . . . Roanoke (Va.) CC is adding nine holes to its present 18 plus new pool and enlarged clubhouse.

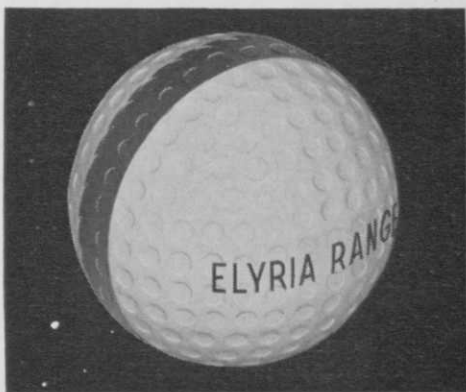
Tom Volko is the new head pro at Locust Valley CC in Coopersburg, Pa. . . . Nick Gianferante returns to South Shore CC in Hingham, Mass. where he served as head pro for 17 years . . . Gianferante has spent the past three years at Brattleboro, Vt. . . . New Western Row CC in Mason, O. plans an April opening . . . Bonnie Brae GC in Charlotte, N.C. is slated for a spring face-lifting . . . Plans to expand the Charlotte munny course to 18 are being held up by proposed highway construction adjacent to the course . . . Construction has started on an 18-hole course, called Historical Green's Folly GC, at Centerville, Va. . . . Larry Ostrander, pro at Bethlehem (N.H.) CC for 15 years, moves to Windham (N.Y.) CC . . . Windham recently okayed acquisition of adjacent land for expansion to 18 . . . Nine-hole layout is being developed at Stamford, Vt. . . . Chicopee, Mass., considering \$350,000 bond issue for munny designed by Geoffrey S. Cornish.

Cincinnati, O. is seeking \$370,000 for development and maintenance of two munny courses . . . New supt. at Forest Lakes CC near Sarasota, Fla. is Bill Balentine, past president of the South Florida GCSA . . . Petitions are going the rounds in Lamesa, Tex. seeking support for a munny nine . . . Robert Moses, president of the New York World's Fair and leader of the New York park district, proposes use of Fair ground as 2,816 acre park to be completed by the summer of 1967 . . . Estimated cost is \$23 million and will come from Fair gate receipts . . . Facilities for just about every recreation activity including golf are planned.

Jefferson County, Ky. plans to open 9-hole course in Waverly Hills Park by the spring of 1965 . . . Nine holes of the new Bay Mountain GC in South Knoxville, Tenn. should be ready for play in June . . . Mayor Randall Miller of Mich-

NOW—your choice of 3 great range balls

BY WORTHINGTON



Now you can select the range ball that best suits the needs of your range!

1. Paintless Yellow

Golden yellow color gives better night visibility. Lively, yet tough as nails! No re-painting—wash and it's bright as new.

2. Paintless White (Patented)

Operators call it the most rugged ball ever developed. Eliminates re-painting. A choice of color stripes. Exclusively manufactured by Worthington under U. S. Pat. Off. No. 2,997,302.

3. Luster-White Painted

A favorite with range operators. Lively! Extra-tough vulcanized cover with a new polyurethane finish that stays gleaming white for the life of the ball.

All range-proven for years—and will never go out of round, or explode under scorching summer sun. Imprinted with your range name in big, bold wrap-around letters—up to 14 letters and spaces on each side of the ball. Choice of color bands, too.

For full details call your Worthington Representative now, or write BURKE-WORTHINGTON INC., 8350 N. Lehigh Ave., Morton Grove, Ill. 60055

Worthington

Subsidiary of Victor Comptometer Corporation



Premier name in
golf ball developments since 1904.

SOUTHERN TURF NURSERIES RECOMMENDS TIFTON 419 BERMUDA

NEW Tifton 419 is the latest grass developed for use on fairways, and tees. This beautiful hybrid is greener than any other fairway grasses on the market today and is highly resistant to disease and pests. It is an easy grass to grow and care for . . . it hugs the ground and requires less mowing. Weeds cannot invade its thick mat. Convert your fairways to Tifton 419, and watch the play pick up. The real Tifton 419 is available at Southern Turf Nurseries.

**SOUTHERN
TURF NURSERIES**
P.O. BOX 569 TIFTON, GA.
AREA 912 - PHONE 382-5655

GRASS SEED

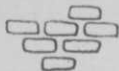
CHEMICALS & FERTILIZERS

For the care of tees,
greens and fairways

Alex Sehmeyer

CHANDERLIN SEED CO.

Chimney Rock & Foot Hill Road
Bound Brook, N. J. • (201) EL 6-8702



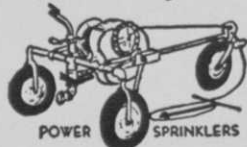
igan City, Ind. wants to raise fees at the community's muni to make it completely self-supporting . . . Nine-hole course and four swimming pools are planned as center of new \$40-million development in Mayfield Village, O. . . Indian Ridge GC in Hobart, Ind. is expected to be put up for sale some time next year . . . Gary, Ind. Elks Lodge considering purchase of the Indian Ridge 18 . . . Battlefield Park Swim Club, Petersburg, Va., is discussing feasibility of 9-hole course and indoor pool . . . George Rogers Clark State Park may be purchased by the city of Springfield, O. for recreation development including a golf course . . . Springfield is losing the Reid Park muni course to a flood control project.

Sherman Oaks, Calif. plans a lighted nine, designed by David Kent . . . Resort motel with 18 is set for Bridgeport, Tex. . . . The problem of damage to nearby homes at the Union County (N.J.) Ash Brook GC should be solved by recent planting of 135 poplars near the pitch and putt range . . . North Shore CC in Milwaukee, Wis. is considering moving to new site with 18 designed by David Gill of St. Charles, Ill. . . . North Lauderdale, Fla., planning community of 2000 homes that will include golf course . . . Land dispute in Parma, O. involves development of golf course site and apartment dwellings . . . Alfred Tull, course architect, has designed 18-holes for \$1.5 million residential layout in Chester County, Pa.

Carling Brewing Co., sponsor of the \$200,000 Carling World Golf Championship, has received an invitation from the Czech government to hold the tourney at Marienbad, some year . . . The Czechs hope to have the course in top condition

AUTOMATIC IRRIGATION

"Set it and Forget it"



Waters areas up to 140 x 650 ft. in one setting. Only 10 minutes to set or remove. Pulls itself along thru winding up a steel cable—Water Powered—Shuts off water automatically.

\$120 to \$325—write for demo offer

TRAVELRAIN®

239 N. Robertson Blvd., Bev. Hills, Cal. Estab. 1935



Mrs. Philip Cudone (1) and Bill Hyndman paired to win the 29th 72-hole International Mixed Foursome in Miami with a 292. Event was played in mid-February. Mrs. Jack McAuliffe presented the silver trophy to the Winners in honor of her late husband.

by 1965 . . . The government will guarantee proper facilities for golfers, the press, radio and TV corps . . . Also, the Czechs promise no trouble over visas and passports . . . Dick Taylor, Carling tournament director, while in Prague met with Lubor Dresler, chairman of the golf governing committee of Czechoslovakia . . . Behind the Iron Curtain, golf officially is a "bourgeois" sport . . . All but two of the ten existing courses have been turned over to other uses . . . On weekends, Czech golfers travel 70 miles to play on their courses . . . Clubs, tees and golf balls are made by hand and a primitive practice course has been hacked out of an empty field.

Orville Belkap, supt. at Hillcrest CC in Lincoln, Neb. was recently given a colored TV by grateful members . . . The Ham-Am tourney at St. Clair CC in Pittsburgh, Pa. features celebrity-pro-amateur golfers matched in a benefit for the Western Pennsylvania Golf Association's caddie scholarship fund . . . Scottsdale (Ariz.) CC, Indian Bend CC and Valley CC are to be the sites of Scottsdale's second Seniors match, April 6 to 11 . . . The Trans-Mississippi Seniors will be held at Desert Inn CC in Las Vegas, Nev., Mar. 24-26.

Whitmarsh Open Golf tourney has settled the 1963 debt of \$76,000-plus and cleared the way for the 1964 event, June 29-July 5 . . . Eleven thousand golfers who scored holes-in-one during 1963 entered the Old Smuggler (Scotch)

March, 1964

**NOW!
TWO GOLF PAL
PROfit-Makers**

MENTHOLIZED
DEODORANT
**FOOT
SPRAY**

Retail \$1.25 per can, pro's cost 75c. Comes six in sales-tested display carton, two cartons to a box, pro's cost \$9.00 for the dozen cans. Sold exclusively thru PRO shops.

New cure for an old problem. For the thousands of golfers who wait to shower until they get home, who simply change from spikes to street shoes after golfing. GOLF PAL Mentholized FOOT SPRAY gives shoe-sore, weary feet an instant lift, an electrifying tingle. A highly effective deodorant that keeps them socially acceptable for hours. Simply spray through socks, or directly on feet if desired. Also effective against athlete's foot. Sell a can each for the golf bag, locker, and auto glove compartment. Again, styled with the clever golf ball cap to tickle the golfer's buying impulse. And the six-pack makes an ideal gift, business or personal.

INSECT REPELLENT

Introduced last year, already a proven "best-seller" in PRO shops. Longest-lasting protection against insects. Expands pro's market for home use, too. Also comes six in self-selling carton, same price as Foot Spray. Sold exclusively through PRO shops.



ON DISPLAY AT BOOTH 117, CHICAGO GOLF SHOW

THE VERKAMP CORPORATION
Cincinnati 37, Ohio • Since 1914

ATTENTION! —Golf Club Officials,
Owners, Managers, Superintendents
Golf Professionals



GOLF SHOE VALET

... aids you in keeping carpet and floor clean in clubhouse, pro shop and locker room. Cleans grass & mud from bottoms AND sole edges of shoes. Anodized aluminum frame with base brush of hard wood and heavy duty plastic bristles. Tampico

Fibre side brushes. All brushes removable, reversible, replaceable. In grey, orange, yellow. 1 unit \$19.95; 3 or more \$17.95 ea. FOB Huntington Park, Calif.

ALUMINUM TEE MARKERS

... In USA recommended colors — Red for front tees, Blue for back tees, White for middle tees, Aluminum for women's tees. Custom made to conform to your score card. 9 hole set, \$85.50; for 18 holes, \$165.50.



GOLF COURSE SIGNS

In Lifetime Aluminum

Strong — Easily Read

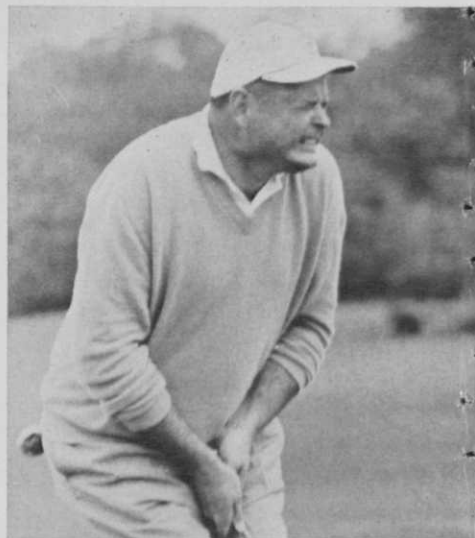
5" x 8" and 5" x 10" signs in embossed aluminum with enamel finish. Special wordings available. In Black, Orange or Yellow letters on White background. From \$3.25 to \$5.75. Stakes .75 each.



NOTE: Postage paid if check received with order.

GOLF COURSE SPECIALTIES

P. O. Box 388, Huntington Park, California



All 235 pounds of six-foot-five Dave Smith were grunting and groaning on this putt in the Dixie Amateur, played in Miami early in February. Dave, of Gastonia, N. C., grimaced his way to victory by shooting a 286, four strokes under the total carded by Lou Rosanova.

Personalized!

AMERICA'S FAVORITE CHARGE BOOKS

100% FLAT OPENING

FOR ALL CLUBHOUSE PRO SHOPS . . .
GOLF, TENNIS, SWIMMING POOL,
GREEN FEES, ETC.

1 Book — \$16.50 6 Books — \$38.50
3 Books — \$29.50 12 Books — \$60.00

Postage Paid if check or M.O. is included with order.

NOW! NO EXTRA CHARGE

for red ink copy in body of stock form. 8 tickets to a page, 2 7/8 x 4 1/4 torn-out size. 1000 sets of slips to each duplicate book; 664 sets of slips to each triplicate book.

Stock colors — Duplicate books: original white, duplicate canary. Triplicate books: original white, duplicate pink, triplicate canary. Green, blue and goldenrod sheets available at additional charge of \$2.00 per order. Last copy not perforated to remain in book for permanent record. Ample carbon paper furnished in back of each book. Attractive maroon overhang covers with identifying labels with space for numbers and date book is in use. Write for sample sheets and descriptive circular.

Order now for immediate delivery

"Dependable Quality and Service Since 1906"

NATIONAL OFFICE SUPPLY CO.

651 S. Utica Street • Waukegan, Illinois

Sweepstakes . . . John Van Veen, Jr. won the draw with his ace at Old Orchard CC in Prospect Heights, Ill. . . . One thousand cash and a trip to the Royal and Ancient Club at St. Andrew's, Scotland, was his reward . . . Bo Winger, newly appointed director of golf at Desert Inn CC and Stardust GC in Las Vegas, Nev., walked into duties as Tournament of Champions director . . . Douglas Dalziel is the new pro at Southampton Golf and Beach Club on Bermuda . . . Jim Muse is head pro at the new Oakland CC in Greensboro, N.C.

The 1964 Masters at Augusta (Ga.) National GC will be the 28th played . . . Tickets are again limited to 10,000 with advance orders accepted only by mail through the club . . . Last year, when there were limited sales, 85 per cent of the gate was sold prior to the tourney . . . Chicago (Ill.) District Golf Association recently announced a competitive schedule of 170 events for 1964 starting May 2 and running through Oct. 29.

Stan Dudas is the pro at the new Princeton (N.J.) CC, set to open April 1 . . . Pro Al Mackintosh, Wilbraham (Mass.) CC is teaching for a fifth season at the Springfield YWCA . . . Frank Kiraly, who left Latrobe (Pa.) Elks CC for the pro spot at Blairmont CC in Holli-



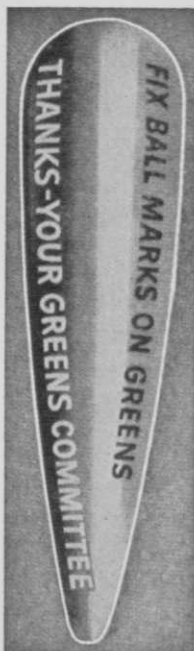
A television camera shoots the swing action and a 75-pound TV tape recorder makes a record of it for immediate playback through the PI-3V, manufactured by Precision Instrument Co. of Palo Alto, Calif. One of the amateurs who played in this year's Bing Crosby Pro-Am is checking to see if there is a flaw in his swing.

daysburg, Pa., has been replaced at Latrobe by Frank Bonaroti . . . New officers for the Allegheny Mountain GCSA are Herb Heinleing of Bon Air CC in Glen Rock, Pa., president; Clark Brinkler of Iron Master CC, Roaring Springs, Pa., vice-president; and Martin Statler of Statler's Par-3, Greensburg, Pa., secretary-treasurer.

North Park course near Pittsburgh, Pa. was allotted \$73,000 of county funds for spruce-up job . . . Ellis Maples, course architect from Pinehurst, N.C., is designing course for the new Carlson Farm CC in Greensboro, N.C. . . . Ken Worthington has left his pro job at Orangeburg (S.C.) CC to join the tour . . . Replacing Worthington is Bob Erickson from the Charleston, S.C. Naval Base course . . . Jim Riggens, pro at Greensboro (N.C.) CC, has resigned.

Several Carolina pros spend the winter teaching golf on Grand Bahama Island . . . John Schoonmaker, pro at Alamance CC in Burlington, N.C., teaches with Pro Craig Wood at Lucaya in Freeport, G.B.I. . . . Davis Love, in the Grand Bahama Hotel tourney, scored a course record of 68 in the qualifying rounds, while Dick Tiddy won the driving contest . . . Both are from Charlotte, N.C. . . . John McDonald, pro at Ould Newbury (Mass.) GC, moves to North Conway (N.H.) CC.

STOP BALL MARKS ON GREENS!



ACTUAL SIZE

Deep or shallow ball marks can now be a putting hazard of the past.

If only 20% of the approach shots hit the greens, it would total thousands of ugly ball marks per green, each year.

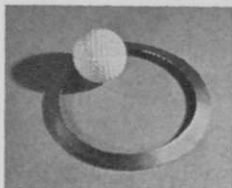
The golfers who wait for the Superintendent and his men to do this expensive repair job will continue to putt over the shallow and deep ball marks.

Remember these holes must be repaired a few minutes after they have been made. Your Superintendent does not have enough money or men to repair ball marks as soon as made.

This and other years, be kind to those beautiful greens, your fellow golfers and that proud and hardworking Golf Course Supt.

PRICES: For plain or imprinted as shown — F.O.B. Des Moines, Iowa
1,000 — \$65 500 — \$35
250 — \$20

Superintendent's Labor Savers!



CUP-LESS

. . . practice putting target ring inside diameters are same as regulation putting cups — 4 1/4

inches; easily moved with putter blade, spreading traffic wear and tear over entire green instead of localizing it.

Packaged in dozen lots — Shipment prepaid
1 doz. _____ \$10; 2 doz. _____ \$18

WOODSIDE GOLF & Park Supply Co.,

Des Moines 13, Iowa

FOR TRUE GOLF GREEN BEAUTY...USE



TWICE AS
MUCH
NITROGEN
AS MOST
OTHER BRANDS.
BEST VALUE
FOR THE MONEY.

**Goldthwaite's
TURF SPECIAL**

A pelleted "organic base" 2-1-1 fertilizer for all types turf grass. Ideal for golf greens, fairways, athletic fields, and lawns.

Goldthwaite's
of TEXAS, inc.

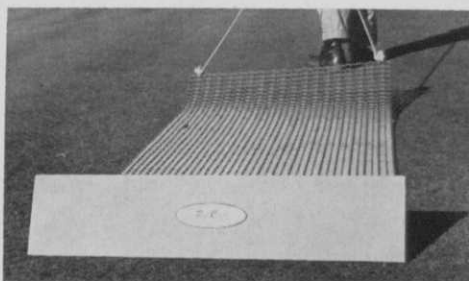
FORT WORTH • DALLAS • HOUSTON • SAN ANTONIO

Floralite Outdoor Lighting Booklet

The Pyle-National Co., Steber Division, 1334 N. Kostner Ave., Chicago, Ill. 60651 has issued a new brochure on Floralite garden and outdoor recreational area lighting. It catalogs and prices portable and permanent fixtures of various types, styles and sizes along with accessories. The bulletin illustrates where and how Steber Floralites can be effectively used for lawns, patios, driveways, and general residential and commercial landscape illumination. Detailed instructions are included for underground wiring system installations.

Pebble Catcher Ends Clean Up After Topdressing

Manufactured by the Golf Course Trailer Co., P.O. Box 3108, Augusta, Ga., the Pebble Catcher permits topdressing of greens without



screening and without time-consuming clean-up. With the Pebble Catcher, maintenance men now can mow greens immediately after dragging, according to the firm. The device was designed by Harold L. Zink, supt at the Armed Forces GC in Augusta, Ga. Jacobsen Turf suppliers handle the Pebble Catcher in all states but Texas where Toro dealers are the distributors.

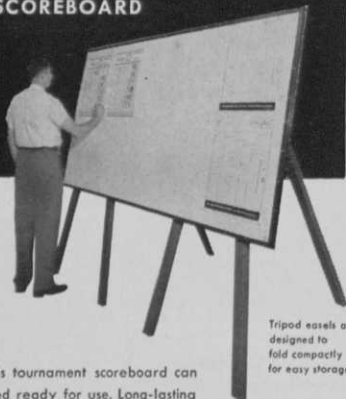
Blue Turf Food Introduced by Smith-Douglass Firm

The newest addition to the Nutro line of turf products manufactured by Smith-Douglass Co., Inc., Norfolk, Va. is Nutro F/58 turf food. Described by the firm as feather-light in bright blue pellets that can be applied either dry or in solution, Nutro F/58 is said to contain three times the nitrogen found in ordinary lawn foods. The blue color helps avoid over-lapping or misses in application. Smith-Douglass offers a money-back performance guarantee.

Davis Price List Issued

George A. Davis, Inc., 5440 Northwest Highway, Chicago, 30, Ill. has issued its Feb., 1964 price list. Davis is a midwest distributor of major lines of turf equipment and supplies used by course supts.

PAR AIDE TOURNAMENT SCOREBOARD



Tripod easels are
designed to
fold compactly
for easy storage.

In a jiffy this tournament scoreboard can be assembled ready for use. Long-lasting reinforced $\frac{3}{4}$ " pine plywood with aluminum edging. Furnished with two collapsible tripod easels which are slotted to receive scoreboard hooks for easy assembly. Size - 4' x 8' - Height 6 $\frac{1}{2}$ '. Color - White face with green background. Price - \$150.00 F.O.B. Factory.



WRITE FOR DETAILS
PAR AIDE PRODUCTS COMPANY
1457 MARSHALL AVE. • ST. PAUL, MINNESOTA 55104

Complete Golf Course Construction

MOORE GOLF, INC.

DIVISION OF
MOORE, KELLY & REDDISH, INC.

Roads, Lakes, Playing Fields, Irrigation Systems

Box 606, Orange, Va.

Tel. 7357

New Bags in Aztec Line

Aztec Golf Bag Co., 1317 Robin Rd. South, St. Petersburg, Fla., whose imported Mexican handtooled leather golf bags had a highly successful introduction last fall, is adding a line of top quality Mexican made golf bags in six handsome new colors. The new bags are untooled and incorporate the latest features in modern bag design. Like the Aztec handtooled models, the new plain leather bags will be sold exclusively through professionals.

Powerscreen for Topdressing Introduced by Royer

Royer Foundry & Machine Co., Kingston, Pa. has added the Powerscreen, designed to prepare



a uniformly fine, homogeneous, trash-free topdressing for use in mechanical spreaders. According to the company, the fragment size can be adjusted from 1/4-in. to 1/8-in. The model '30' now in production will take the charge from all one-man, hand-fed Royer shredders. Larger models for use with tractor-bucket operations will be introduced later in the year.

Fore-Par Moving to New Plant

Fore-Par Mfg. Co., manufacturer of golf course markers, signs, ball washers and flags is moving to a new plant at 773 Broadway, Laguna Beach, Calif. According to Fore-Par's president, Reisse Bentley, production will continue at the present plant in Laguna Beach until mid-April, by which time the greatly increased facilities at the new location will be in full swing. Demand for the company's 12 different kinds of greens flags has kept its flag department producing at full tilt, Bentley reports.

Tell Them You Saw
The Ad In GOLFDOM

TROUBLE FREE! RENTAL CART SERVICE

We furnish you all you need on rental share basis. No investment for you! We deliver and service carts regularly and keep them in good repair — FREE. Clubs not held responsible for damages, theft or breakage.

CADDY-ROLL RENTAL SERVICE
Three Rivers, Michigan



James G. Harrison Ferdinand Garbin

GOLF COURSE ARCHITECTS

Members

American Society of Golf Course Architects

266 Harrison Road
Turtle Creek, Pa.
823-3444

R. R. 2, Box 186
Export, Pa.
327-4704



ROBERT BRUCE HARRIS

Golf Course Architect

MEMBER AMERICAN SOCIETY OF GOLF COURSE ARCHITECTS

645 N. MICHIGAN AVENUE CHICAGO 11 • ILL.
WHitehall 4-6530



A total of 24 dealers and country club mechanics recently attended the first Harley-Davidson gasoline golf car school in Milwaukee. Robert Jameson (r), school instructor, explains the inner workings of a car to four of the students. Harley-Davidson dealers service 3,000 golf, many and police fleets around the world.

New Coster Warehouse Services Four States

The new branch warehouse and service center of H. Coster Electric Car Sales & Service is located at 108 W. Wyoming St., Cincinnati, Ohio. The operation is managed by Bob Biddle and services Ohio, Eastern Ky., Pa. and W. Va.

Immediate shipment of parts, batteries and chargers for almost any make of golf car is made from the new location. Factory trained mechanics under the direction of Fred Bennett are available 24 hours daily. There is also winter storage for 1,000 golf cars and complete body shop facilities. Several makes of new golf cars including Cushman, Victor and Pargo are carried in stock for same day delivery. The



complete line of Cushman Turf Trucksters are also on display. There is a large selection of used and reconditioned golf vehicles to choose from. A recent open house brought together over 250 pros and supts. from a four state area.

H. D. Hudson Manufacturing Co., 539 E. Illinois Street, Chicago, Ill., 60611, markets the Broad-Spray extension set. According to the firm, it is ideal for spraying large areas.

GEOFFREY S. CORNISH

Golf
Course
Architect

Fiddler's Green Amherst, Mass.
Phone: 413-253-3913

FRANCIS J. DUANE
Golf Course Architect

735 Port Washington Boulevard
Port Washington, L. I., N. Y.

516 - PORT WASHINGTON 7-7851