



We thank you and every other golf professional in America for helping to make 1963 the greatest Titleist year of them all.

We offer you our best wishes for continued prosperity and success in 1964. Acushnet Process Sales Co., New Bedford, Massachusetts.

**SOLD THRU GOLF COURSE PRO SHOPS ONLY**



TRADE MARK



# SWINGING AROUND GOLF

News of the Golf  
World in Brief

By **HERB GRAFFIS**

## FRONT COVER

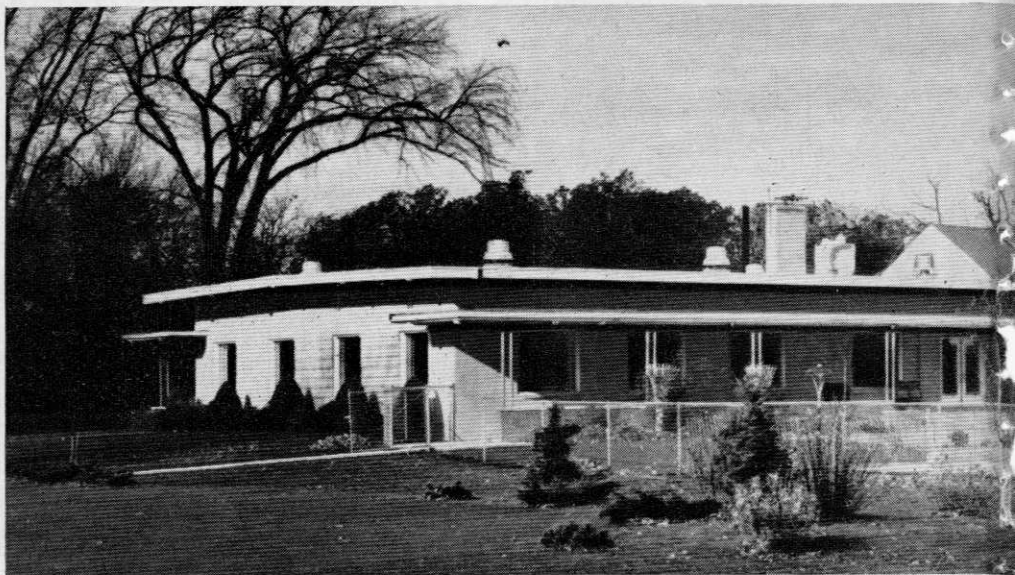
Ed Travis (l) and Roland Snipes, assistants to Ross Collins in the Lakewood pro shop in Dallas, put the finishing touches on a display window presentation. On page 35 you'll learn why Collins thinks a display of this kind can be a shop's most provocative merchandising gimmick.

**Members of Bala GC, Philadelphia district, voted three to one at annual meeting in November against selling club property within the next year . . . Club has been offered \$3 million for its 88-acre tract . . . Harold J. Poad, running on a "don't sell — let's play golf" ticket, was re-elected president . . . Dick Prevarthan, who broke into golf as an assistant supt. at Beverly CC in Chicago, then moved to a Washington, D.C. club, has returned to the Chicago area as turfmaster at the new Prestwick CC, located south of the city . . . Three golf books penned by Joe Novak, golf director at Bel-Air CC in L.A., have been translated into Japanese . . . Shortly before Christmas, 35 of Joe's members ordered copies as Christmas gifts for their friends.**

**Joe Belfore, 32 years at the CC of Detroit, 30 of them as head pro, died in November after a long illness . . . A native of New Rochelle, N.Y., Joe worked as an assistant at clubs in the East and in Duluth, Minn., for a few years before moving to the Detroit post . . . One of the game's leading teachers, Joe shunned the national events and was content to play in sectional affairs . . . He won the Michigan PGA Championship twice and at one time served as president of the state's PGA . . . He filled in on several occasions as acting manager of the CC of Detroit while carrying on as its pro . . . He is survived by his wife and two sons.**

**Jack Ellis has been named professional as Los Coyotes CC, Buena Park, Calif., succeeding Bill Parker, who moved to Hacienda CC . . . While attending Oklahoma State U., Ellis played under Labron Harris . . . Bud Turner, formerly at Rancho Bernardo CC, San Diego, as supt., has moved to the Royal Lahaina GC, Maui, Hawaii . . . He succeeds J. D. Kilpatrick, who returned to the mainland to supervise building of Rancho LaCosta, Leucadia, Calif., for Dick Wilson, the architect . . . Grady Cagle, Bonnie Bell and Sam Fogo, all California supts., are supervising construction of courses on the West Coast.**

**Bermuda's first Par 3, the Southampton Club, located near historic Gibb's Hill lighthouse, was put in play in December . . . Designed by Alfred H. Tull, the course is 2563 yards long, with the longest hole running to 210 yards . . . W.**

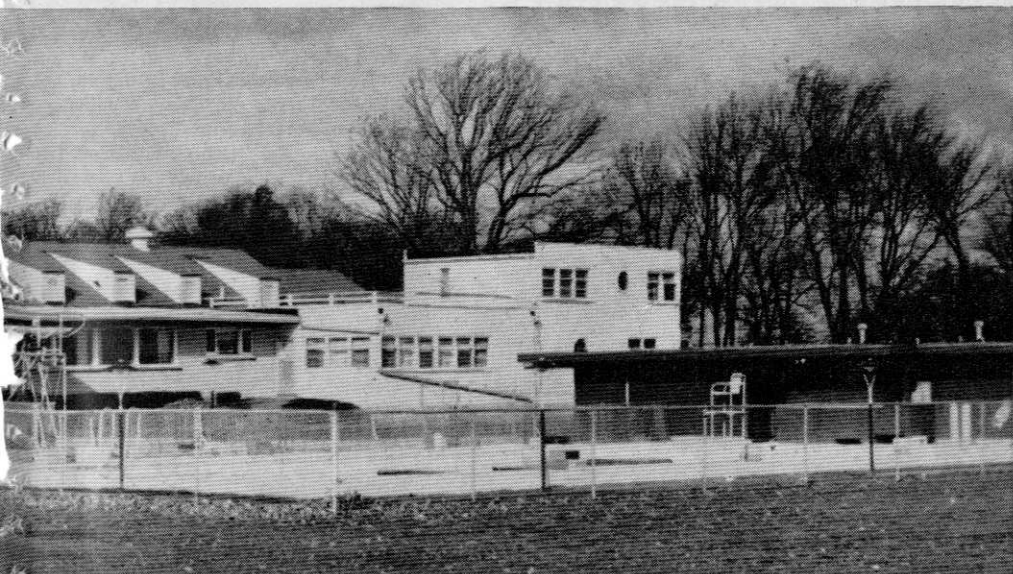


## TUCKAWAY COUNTRY CLUB WITH FIVE MILES

Cast iron pipe goes in at Tuckaway Country Club. The new watering system includes sprinkler outlets at the center of each green and along the fairways. Sprinkling heads can be quickly snapped into place.



Clubhouse at Tuckaway Country Club serves more than 400 members, stays open throughout the year. Founded in 1925, the club covers 127 acres of gently rolling woodland in southern Milwaukee County.



## INSURES ITS GROUNDS OF CAST IRON PIPE

There'll be no lack of water at Milwaukee's Tuckaway Country Club. Not with the cast iron irrigation system recently installed. Five miles of 3", 4" and 6" pipe underlie the 18-hole course. Deliver enough water to sprinkle all greens, tees and fairways every 48 hours if necessary.

Cast iron pipe insures beautiful, playable grounds. It's naturally strong for dependable water flow. Two examples of this strength: (1) Every length of cast iron pipe is tested at 500 psi. (2) A length of 6" cast iron pipe stands up under nine-ton-per-foot loading. Another benefit: Cast iron pipe won't absorb water—it's free from freezing damage when drained. These are good points to bear in mind when you consider the strains and stresses water pipe takes through the years.

Of course, cast iron pipe durability is *proven*. 55 U.S. cities use cast iron water mains installed at least a century ago. Isn't this the kind of value and economy you want? Get it! Install cast iron pipe.

Get valuable information on planning and installation of golf course watering systems. Send for your free copy of "Golf Course Irrigation," today.

AN ASSOCIATION OF QUALITY PRODUCERS DEDICATED TO HIGHEST PIPE STANDARDS. Alabama Pipe Co. • American Cast Iron Pipe Co. Glamorgan Pipe & Foundry Co. • James B. Clow & Sons, Inc. • Lone Star Steel Co. • Lynchburg Foundry Co. • McWane Cast Iron Pipe Co. • Pacific States Cast Iron Pipe Co. • United States Pipe & Foundry Co.



### CAST IRON PIPE

THE MARK OF PIPE THAT LASTS OVER 100 YEARS

CAST IRON PIPE RESEARCH ASSOCIATION  
Wallace T. Miller, Managing Director  
3440-G Prudential Plaza  
Chicago 1, Illinois

Send copy of booklet, "Golf Course Irrigation."

Name \_\_\_\_\_

Position \_\_\_\_\_

Name of Course \_\_\_\_\_

Address \_\_\_\_\_

City \_\_\_\_\_ Zone \_\_\_\_\_ State \_\_\_\_\_

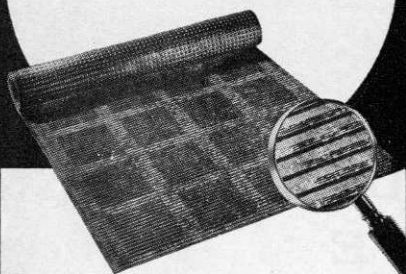


# SHADOW TONE

*Spike-Resistant*

# MATting

for **GOLF**  
**CART FLOORS**



**Made of tough nylon synthetic fibers, rubber and additives to afford unequalled resistance to wear, scoring, denting and puncturing. Slip-resistant, wet or dry. Easy to clean. Unharmed by sunlight or extremely high or low temperatures. Grease-resistant. Attractive "two-tone" appearance.**

**Comes in rolls for easy cutting to desired size or in sizes cut to your specifications.**

*Write for literature and prices.*

**AMERICAN MAT**  
**Corporation**

1802 Adams St., Toledo, Ohio 43601  
Phone: (419) 243-3227

*"America's Largest Specialists in Floor Matting"*

Wayne Hinish, Penn State U. agronomist, has been given an 18-month leave to work on a reclamation project in Pakistan . . . 21-year old Jorge Bobonis became the first native born Puerto Rican to win the Dorado Beach Invitational when he defeated Peter J. Zaccagnino, Jr. of Hartford, Conn., 1 up in 36 holes in the final . . . Frank Strafacci, golf director at Doral Hotel and CC in Miami, has set up a one-week, all-expense golf vacation package that is getting a big play from Eastern club members.

**Reston (Va.) North GC, to be completed** this summer, covers about 200 acres, according to Edmund B. Ault, Washington designer . . . There won't be a parallel hole on the par 71 layout, part of a development that will have 75,000 residents by 1980 plus four more courses . . . A fire in the pro shop of Ray Jamieson, pro at Rockland CC, Sparkill, N. Y., in November, destroyed practically all his stock . . . For the last five years, Don Malarkey, pro-supt. of Signal Mountain (Tenn.) GC, has attended the fall turf conference at Kansas State U. in Manhattan . . . He has travelled more than 10,000 miles in making the annual trek, got started because he was told K.S.U. puts on a good show and by now is convinced that it does . . . Mike's son, whose picture appeared in *Golfdom* several years ago, is a promising freshman golfer at Memphis State College.

**Pete Cooper, "the best Bermudagrass putter in captivity"**, won the 1963 Florida Open with a 269 . . . Eight strokes behind him in second place was J. C. Gossie . . . Tommy Willock won the pro-supt., and John Cook, the supt. tournaments, in the 1963 Virginia Supts. Championships . . . Joe Dante, Rockaway River CC pro, was re-elected to a third straight term as president of the New Jersey PGA at the fall meeting . . . Ken Burnette, for three years an assistant to Bud Geoghegan at Crestmont CC in West Orange, N.J., has been named pro at Cedar Hill, Livingston . . . He succeeds Ben Toski.

**Mickey Wright has been re-elected** president of the Ladies PGA for a second term . . . Mary Lena Faulk is the new vp . . . Films of 22 1963 matches in Shell's "Wonderful World of Golf" can be obtained from Shell Oil Co., 50 W. 50th st., New York . . . All are on a free loan basis, are 16mm and run about one hour . . . Also free is the 1963 Buick Open — 16 mm, color, 28 minutes — from Buick

# On TV see the world's greatest golfers play the world's greatest courses!



Chen Ching-Po (left) watches Tony Lema's drive from the 2nd tee of the beautiful Fuji Course, Kawana, Japan

## 11 top matches—Starting Jan. 19—Every Sunday—NBC-TV in color

See winners of the PGA, U.S. Open, Ladies PGA, Masters and British Open play some of the most beautiful courses and toughest competitors in the world. Plan now to enjoy the most fascinating golf you may ever see. Every week a different course, a different country . . . with local color and customs as part of the show.

### SCHEDULE "SHELL'S WONDERFUL WORLD OF GOLF"

PLAYERS		LOCATION	BROADCAST DATE
Julius Boros	Miguel Sala	Country Club de Bogota (Colombia)	Jan. 19
Mickey Wright	Brigitte Varangot	Estoril (Portugal)	Jan. 26
Dave Marr	Flory Van Donck	Royal Golf Course (Belgium)	Feb. 2
Gene Littler	Eric Brown	Gleneagles (Scotland)	Feb. 9
George Knudson	Stan Leonard	Capilano, West Vancouver (Canada)	Feb. 16
Tony Lema	Chen Ching-Po	Fuji Golf Course, Kawana (Japan)	Feb. 23
Doug Sanders	Juan Rodriguez	Dorado Beach (Puerto Rico)	Mar. 1
Bobby Nichols	Jacky Bonvin	Crans-sur-Sierre (Switzerland)	Mar. 8
Dave Ragan	Bob Charles	Royal Lahaina Golf Course, Maui (Hawaii)	Mar. 15
Johnny Pott	Kel Nagle	Delhi Golf Club, New Delhi (India)	Mar. 22
Jack Nicklaus	Sam Snead	Pebble Beach (California)	Mar. 29



## SHELL'S WONDERFUL WORLD OF GOLF

SUNDAYS, NBC-TV, 4 PM EST, 3 PM CST, 2 PM MST, 4 PM PST.

In Canada—CBC-TV—Sundays—3:30 PM EST.

THE NEW  1964  
**RAM**  
®

**ADVERTISING CAMPAIGN  
WILL BE PRE-SELLING  
YOUR CUSTOMERS DAY  
AFTER DAY - MONTH  
AFTER MONTH ALL YEAR!**

*RAM SALESMEN ARE ON  
THE WAY TO SEE YOU  
WITH THE SPECTACULAR  
RAM SPECIAL PROFIT DEAL  
FOR YOUR PRO SHOP.....*

# DISCOVER \* the NEW



**DU PONT**  
**NYLON CENTER \***  
PATENT NO. 3,053,539

The greatest advancement ever made in golf ball construction . . . the secret is in the DUPONT NYLON center which develops fantastic initial velocity and gives RAM the extra push that sends it up to 25 yards further.  
conforms to U.S.G.A. specifications.

**JUST WAIT TILL YOU PLAY IT !**

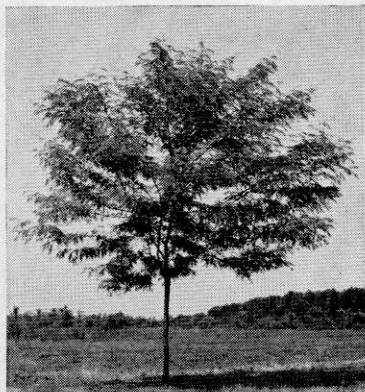


**RAM**

350 FIFTH AVE.  
NEW YORK, N.Y.

**SOLD THROUGH YOUR GOLF PROFESSIONAL SHOP ONLY**





**COLE'S IMPERIAL (P.P. 1605)** *Matures at 35 feet. Ideal Shade tree for golf courses.*

**FOR MODERN TREES  
AND NURSERY STOCKS**

**CALL  
COLE**

- ★ Patented New Varieties
- ★ Improved Old Standards
- ★ Strongest Roots Grown
- ★ Ample Supply
- ★ Wide Variety
- ★ Careful Packing
- ★ Prompt Shipment
- ★ Reasonable Prices

***Ohio's Largest  
Wholesale Nursery***

**THE COLE NURSERY CO.**

Phone **Elmwood 2-3121**  
2000 W. Jackson St., Painesville, Ohio  
Old Route 23, Circleville, Ohio

Public Relations, Flint 2, Mich. . . .  
Purse for the fifth Palm Springs Classic  
has been increased from \$65,000 to \$100,-  
000 including \$50,000 in pro-am prizes.  
. . . It will be played over four courses.

**George Bolesta, 45, pro at Danville**  
(Ill.) CC since 1949, and at Tampa (Fla.)  
G & CC, died of heart disease late in  
November in Tampa . . . He is survived  
by his wife, Helen and father, J. E. . . .  
Albert K. (Doc) Adams, onetime assistant  
professional at Barrington Hills CC, Bar-  
rington, Ill., and a longtime director of  
tournaments in the Chicagoland area, died  
in November in his Wheaton, Ill. home.  
. . . He is survived by two brothers, Har-  
ry and Jeff, who were also professionals,  
and two sisters . . . Don Weiss, for 14  
years a member of the staff of the Asso-  
ciated Press in New York, is now public  
information editor for the USGA . . . He  
was named to the position in November  
. . . Weiss was a member of the U. of  
Missouri golf team . . . Eddie L. Ervin,  
Jr., with the USGA since 1962, has been  
named associate editor of public informa-  
tion.

**Recreational area of 500 acres, near**  
West Chester, Pa., assembled by Radley  
Run, Inc., will include \$1.5 million coun-  
try club . . . Alfred Tull will design the  
7,000 yard course . . . When Shady Oaks  
GC opens Apr. 1, it will bring to 13 the  
number of courses operating within a 30  
mile radius of Atlantic City . . . Atlantic  
City CC, the oldest, was started in the  
'90s . . . When Clarence H. Geist, utility  
magnate, found he couldn't make immedi-  
ate starting arrangements at Atlantic City,  
he built his own course, Seaview, in the  
early 1900s . . . Seaview has two 18s and  
members from every state in the union.  
. . . Leo Fraser is building Shady Oaks  
. . . Mrs. William S. Patterson is serving  
a second term as president of Connecti-  
cut Women's GA . . . This organization,  
which has 53 member clubs, recently  
turned over \$500 to Connecticut State GA  
caddie scholarship fund.

**Wendell Ross, pro at Pequot GC,** has  
been elected president of the Connecticut  
PGA for the third straight year . . . John  
F. Dolan now is executive manager of the  
Doral Hotel and CC in Miami . . . He  
has held several managerial spots at Flori-  
da resort courses in the past . . . Minne-  
haha CC, Sioux Falls, S.D., building a  
clubhouse that will cost in excess of \$550,-  
000 . . . One green and two tees are be-  
ing re-located to fit in the new structure