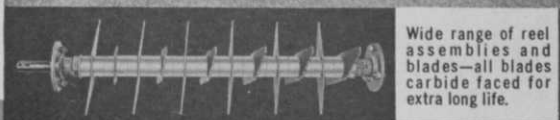


**Use the
high speed,
deep slicing
RYAN
MATAWAY
to control thatch
for better
turf growth**



Wide range of reel assemblies and blades—all blades carbide faced for extra long life.

The self-propelled Ryan Mataway is powered with a 9 HP engine to guarantee continuous high speed cutting through the densest thatch. The high speed helps blades lift out thatch without harming grass. The Mataway covers over 10,000 sq. ft.



per hour so you can use it for all the jobs it's built to do—on greens, tees, fairways and approaches: *thatch control, vertical slicing of running stem grasses, grain control, erosion control and to reduce moisture runoff, to cut narrow furrows in soil surface before overseeding or fertilizing.* Choice of models, one with reversing reel, plus lighter weight Ren-O-Thin for power raking.

◀ See how Ryan units team up to do more jobs: Use the Ryan Green-saire for superfine aerating (it pulls more cores per sq. ft. than any other aerator . . . core openings do not deflect putts . . . coring immediately relieves compaction). Follow up with the Mataway (or Ren-O-Thin) to turn cores into top dressing! See your Ryan distributor or write:



Manufacturers of WORLD FAMOUS turf equipment

EQUIPMENT COMPANY

2055 WHITE BEAR AVE., ST. PAUL, MINN., 55109

AERATORS, RENOVATORS, VERTICAL MOWERS, SPREADERS, ROLLERS, AND SOD CUTTERS

BOB DUNNING GOLF

COMPLETE SERVICE

Greens with Built-in Savings. Multiple Pin Positions. More Interesting Golf Through Dunning Designed Courses. Design — Engineering & Installation of Automatic Sprinkling Systems.

Designer & Builder of Blue Hills Country Club Championship Golf Course, Kansas City.

Twenty-three Years Consultant Service — All Phases.

Write or Call for Information

1402-12 S. LEWIS
TULSA 4, OKLAHOMA

BOB DUNNING, INC.

Suppliers To Golf Courses

WEbster 6-3660
or 9-3206

in her overall rhythm by sheer strength.

When a woman who I am teaching hits a better than average shot, I always stop right then and explain to her the actions she brought into play to do it. In many cases, I go into a great deal of detail in telling her why she hit the shot well, mainly because the feeling of the shot is firmly implanted in her mind at that moment. This, I feel, is the truly positive way of teaching. I am not telling her what she did wrong, but rather what she did right. And, that is what she wants to know.

The Real "Home Pro"

Women students ordinarily won't go so far as to tell their pros that their golf-playing husbands browbeat them. But I suspect this often is the case. For example, you may work with one of your women players for a week or so, and bring her game along beautifully only to have it undone when she goes home and starts talking golf with her husband. He and not you is the "home pro." He has

studied her swing on those few occasions when he has condescended to play with her, and what you have taught her may be basically all right, but there are refinements he insists on making. Unless this husband really understands the swing, serious damage is going to be done to one of your pupils.

How do you find out if a husband has been tampering with the ideas you have tried to teach? The next time the woman student takes a lesson from you she is going to expound some theories that are going to make you wonder where she picked them up. Now you know!

She's A Relief

I think it is fortunate for all pros that most women players take a rather casual attitude about their games. Think of what we'd have to put up with if 90 and not 50 per cent of our teaching time was occupied with hard driving males who either want perfection or are intent on learning how to drive the ball 250 yards to satisfy their masculinity. The

Specialists in Golf Course Construction Since 1924!

GOLF COURSE CONSTRUCTION BY CONTRACT

For further information, free estimates, write or call

MADDOX

CONSTRUCTION COMPANY
GOLF COURSE BUILDERS

ST. CHARLES, ILLINOIS
584-0315 & 584-6641

BATAVIA, ILL.
879-3843

DANVILLE, ILL.
442-2411

FOR PERFORMANCE IN POP-UPS



BUCKNER COMES UP WITH THE BEST

The original and only complete line of *cam-driven rotary pop-up sprinklers* come from Buckner. Combining high performance with big economies in turf care and equipment maintenance, Buckner's heavy-duty 1300 series provides coverage of 100 to 215 feet diameter. Powerful cam-drive has only two moving parts, no gears to wear. Other features: durable all-brass construction; simplified one-piece housing; accessible internal parts for ease of servicing. Install these sprinklers with famous Buckner automatic controllers and valves, and you have the world's most efficient and convenient sprinkler system—backed by the most comprehensive nationwide network of field specialists. Model 1330 for 3-row systems; 1370 for 2-row systems; 1390 for 1-row systems. Write for free catalog and name of nearest dealer.

LEADING NAME IN SPRINKLERS FOR OVER 50 YEARS

Buckner INDUSTRIES, INC.

P. O. BOX 232 • FRESNO 8, CALIFORNIA

PIXTONE

The
Proven
Mechanical
Stonepicker



WILL SPEED FALL SEEDING!

Revolving arm and rake design removes stone 1 to 9 inch diameter — sifts soil for ideal seedbed. One man and tractor does twelve men's work. Grass roots faster — sturdier — permanent. Write — wire — phone for details NOW — don't wait until too late.

BRIDGEPORT IMPLEMENT WORKS, INC.

Box 286G — Stratford, Conn. 06497
Phone 203-375-3319

woman who wants nothing more than to be an average golfer, who is desirous of acquiring just enough skill so that she won't slow up her husband when she plays with him, is a relief and a blessing when everything pertaining to teaching is considered. She may be just a little exasperating because she isn't a dogged competitor, and she may be annoying on those occasions when she'd rather talk about her game than work on it, but you have to concede that the time she spends on the lesson tee is one of the more welcome intervals in your working day.

Uses A Rope Trick

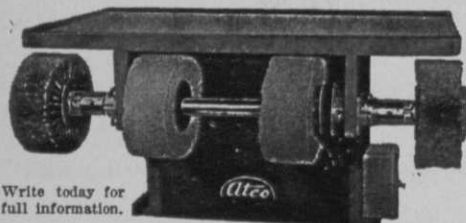
I won't say that I prefer women to men when it comes to teaching. Actually, I have no preferences. I like to teach kids as well as grownups and I think nothing of spending eight or ten hours a day on the lesson tee. Accomplishment in teaching thrills me more than anything — even my own game when I'm

playing well. I like nothing better than to bring a woman to the point where she can consistently break 100. Taking a wild hitting male and helping him to straighten out his drives gives me great satisfaction. Several years ago I devised a rope trick that I have used effectively in getting golfers to pivot correctly. I loop the rope around the player's mid-section, apply pressure on the right side for the proper twist, and then pull the left side for the turn in the follow-through. Many players have told me that the rope improves their timing immensely. It isn't uncommon for them to come back from time to time for further sessions with the rope, especially when their timing goes sour.

Brigitte Varangot of France will play in the USGA Women's Amateur at Prairie Dunes CC, Hutchinson, Kans., Aug. 17-22. She also will stay on to play several events on the Ladies PGA circuit.

A "MUST" FOR EVERY LOCKER ROOM

Complete Shoe Cleaning & Shine Bar

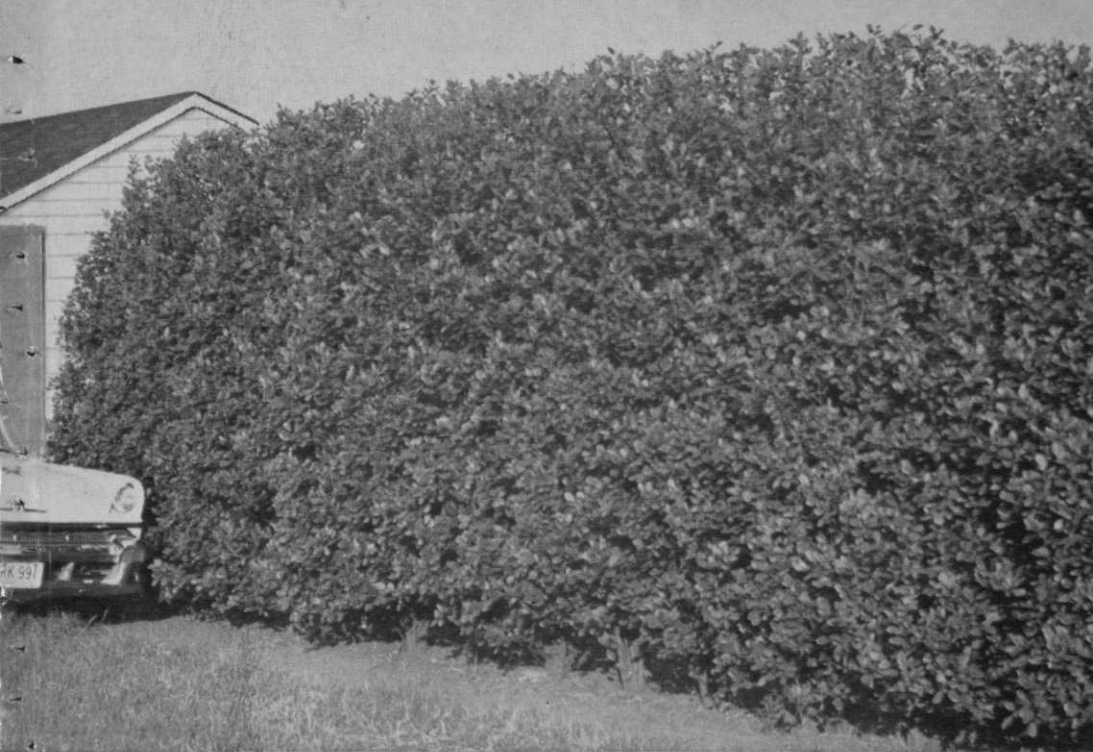


Write today for full information.

- "Standard Locker Room Equipment" in fine clubs everywhere.
- Handles shoes, bags & leather items . . . all types & colors.
- 5 times faster service than hand work.
- Anyone can operate!

ADVANCE TOOL CO.

P.O. Box 25394, Los Angeles, Calif. 90025



In only five years this perfect, uniform hedge grew to ten feet from 2 to 3 foot Tallhedge plants 30 inches apart. Never trimmed, except to even up the top at picture time, the hedge maintains a naturally neat appearance.

Now Cole's beautiful new Tallhedge

Rhamnus frangula columnaris. P.P.1388. Luedy

gives you perfect hedges and screens at low cost

**Cole's New Tallhedge is
the ideal screen for:**

Tees and Greens
Practice Greens
Swimming Pools
Tennis Courts
Adjacent Property
Nearby Traffic
Storage Areas

Wholesale orders only
Send for our Catalog

August, 1964

NEW BEAUTY. Now, for the first time, Tallhedge, the most beautiful new hedge plant introduced in America in decades, fills a long-standing need for a tall, narrow hedge that always looks freshly trimmed.

DENSE, FAST-GROWING. Tallhedge quickly forms a neat, compact, narrow hedge or screen 12 to 15 feet high, yet can easily be kept as low as 4 feet. Averages 4 feet wide at maturity.

STAYS NEAT. Tallhedge needs practically no care. The hedge illustrated above was never side-trimmed. Note how the dense foliage grows almost from ground level.

VIGOROUS FOLIAGE. Lustrous, heavy, dark green leaves are enhanced by a summer-long succession of attractive berries changing from cream to pink, red and black.

LOW COST. 30-inch spacing is ideal for Tallhedge—takes $\frac{1}{4}$ to $\frac{1}{2}$ as many plants as a privet hedge of equal length at about the same cost per foot. Saves planting cost, too.

EASY MAINTENANCE. Tallhedge is extremely hardy and adaptable—needs no special care. Sides need not be trimmed. Slight shearing at top when young will maintain an even line at any desired height.

THE COLE NURSERY CO.

Phone Elmwood 2-3121

HEADQUARTERS: 2000 W. Jackson St., Painesville, Ohio
CIRCLEVILLE DIVISION: Old Route 23, Circleville, Ohio



Profit with
new knit
**CLUB
SOX**

the handiest,
handsomest
head covers

FOR NOS. 1, 2, 3, 4, 5
AND PUTTER

FULLY WASHABLE orlon acrylic,
retains shape and color.

TUCKS INTO POCKET DURING
PLAY, slips on and off club
heads quickly.

STYLE 5002 has 1, 2, 3, 4, or
5 narrow stripes to show club
number. 12 popular colors. Sug.
Ret. \$1.75 each.

STYLE 5004 is KNIT-LINED; has
actual numerals. 12 favorite
colors. Sug. Ret. \$2 each.
(Matching Putter Covers, \$1.35
Sug. Ret.)

Immediate shipment.

WRITE FOR COLORFUL, PRICE-LISTED
LITERATURE ON FAST-SELLING KNIT
CLUB SOX.

RELIABLE Knitting Works
Milwaukee, Wisconsin 53205

Reverse Stress

(Continued from page 30)

the beams are held down by the pillars, not up.

"If the beams' weight were put on those steel plates they would buckle," says Hummel. "But since they are merely holding the beams *down* there is no problem."

Other Innovations

While the average visitor to the country club will quickly notice that none of the beams or uprights meet the ground, or each other, in direct contact, he is not as likely to notice some of the other innovations made by Hummel to cut costs in the country club.

One example is the numerous large windows which are set in aluminum sash coated with a special epoxy finish which can be damaged only with a sharp blow. The corrosion resistant epoxy will cut maintenance to a minimum.

Shower room maintenance, always a problem in country clubs, has been reduced to a minimum by Hummel's designing talents.

Don't Extend to Floor

The shower rooms are tiled from floor to ceiling. Stall walls have been constructed so that they end before meeting the floor, thus cutting down on corners which must constantly be cleaned and disinfected.

Nor are there any shower doors or curtains. Hummel has designed all shower stalls for complete privacy without use of doors or curtains, thus saving more money and maintenance time.

Interior construction innovations also include the attractive use of exposed natural finish, 2-inch redwood planks combined with adobe bricks to lend the lounge area an early California decor.

Grooved for Acoustics

Specially milled 4 x 6-inch cedar planks with three half-inch grooves cut into each make up the ceiling over the exposed beam construction in the dining room. The thickness of the wood provides both insulation and strength for the roof laid directly over it. The grooves are quite

attractive and serve as an acoustic ceiling as well.

The entire building was designed so that none of the windows which open to all directions is subject to direct sunlight during the heat of the day. This saves on deterioration of carpets and of furniture and other items which are subject to sun-fading.

Gutters Above Roof Line

Even gutters at the edge of the roof have received attention from Hummel. A board along the eaves extends above the roof line forming an "L" shape to catch rain. For now these L-shaped gutters have been fabricated of a light metal. When they have to be replaced, Hummel fully expects suitable plastic gutters will be available. Either way they can be replaced simply by lifting the old ones out and setting the new ones in. There are no unsightly gutters or spouts to mar the rugged beauty of the club house.

Posts Are Unfinished

The posts along the walkways around the building are all roughly finished so that if golf cars bump them or they receive other rough wear, there will be no maintenance problem except possible re-staining.

The clubhouse provides for lockerrooms on the lower floor, along with a barber shop, steam room, and mechanical room. On the upper level are the lounge, dining room, kitchen, snack bar, offices and pro shop.

Joe Seward says his club had to move from its old location because of a need to expand. It was hemmed in by roads on all sides at the old location.

"We could have built tunnels under the highways, of course," Seward said. "But the land adjacent to the club was priced at \$10,000 an acre. We looked around and found this foothill land for \$3,000 an acre. Now, where we had only nine holes before, we have 18 holes."

High On A Hill

The clubhouse is situated on a hill high above most of the course. Both the first and tenth tee are some 300 feet

"YEAR 'ROUND" MONEY-MAKER!



**Galloping
Golf**

**EXCITING!
Adult Game —
Played With Dice!**

**"SALES TESTED"
ACCLAIMED BY ALL GOLFERS**

Get your share of the profits made possible by the rapidly increasing demand for the action game, GALLOPING GOLF!

FASTEST GAME OF GOLF OFF THE COURSE!

Feel the thrills of real golf—shoot eagles, birdies, sand traps . . . all the others. Play anywhere, any time. Any number can play.

GIFT PACKAGED in an "eye-catching," "sales-making," multi-color display carton.

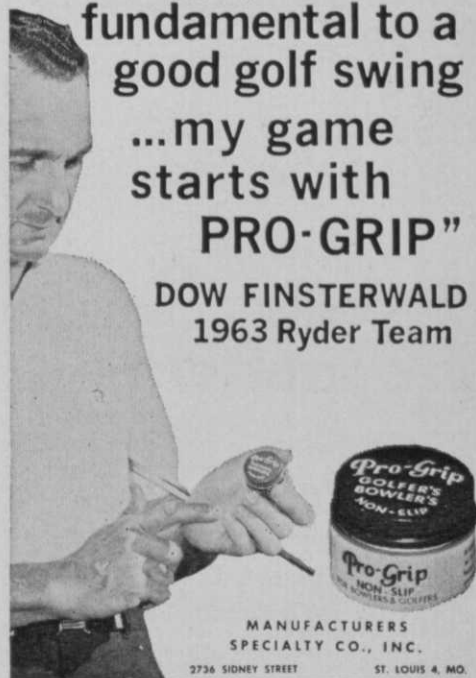
Write for all the facts!

GALLOPING GAMES, INC.
461 E. OHIO ST., CHICAGO, ILL. 60611

"A firm grip is
fundamental to a
good golf swing
...my game
starts with

PRO-GRIP"

**DOW FINSTERWALD
1963 Ryder Team**

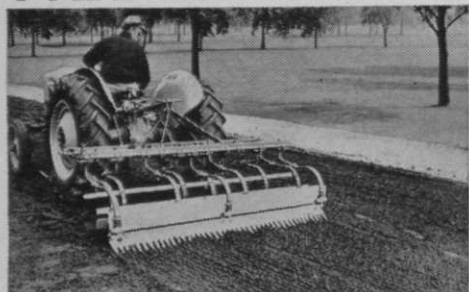


MANUFACTURERS
SPECIALTY CO., INC.

2736 SIDNEY STREET

ST. LOUIS 4, MO.

ROSEMAN TILLER-RAKE



Fast, Efficient Seedbed Preparation

THIS ONE TOOL...

- Scarifies
- Grades
- Levels
- Tills
- Spreads
- Pulverizes
- Finish Rakes

The ideal attachment for construction or rebuilding of tees and greens, for grading badly compacted and rutted service roads and parking areas.

ROSEMAN TRACTOR EQUIPMENT CO.

2620 Crawford Avenue

Evanston, Illinois

MOODY

"Rainmaster"

Better Turf
Through
Better
Sprinkling

MOODY

"Rainmaster"

MOODY SPRINKLER COMPANY, INC.
P.O. Box 240, Arcadia, California



When Fred Waring (l), owner of the Shawnee-on-Delaware Inn & CC, attended the opening of the Peace Pipe GC in Denville, N. J., he was inducted into Jersey's original Indian tribe, the Lenapes. Felix Marrick (center), president of the club, officiated at the induction. At right is Harvey Conley, Peace Pipe pro.

above the green. The first nine plays down a valley through a grove of eucalyptus trees then back up the other side of the valley to the clubhouse. The back nine goes up one valley, around a hill, and back down a second valley to the clubhouse.

On top of the back-nine hill a large number of homesites have been laid out. There are also homesites along the first, fourth and fifth fairways.

Rapid Membership Increase

The club increased its membership from 250 to 400 during the months immediately preceding the opening of the new clubhouse in June.

In its new hillside location, the club has established a driving range on the brow of a hill where the balls travel at least as far downward as they do outward. "Even the duffers get a real feeling of accomplishment as they watch the balls arch out into the valley," says Seward.

Missouri Turf Conference

The fifth annual lawn and turf conference of the University of Missouri, Columbia, has been scheduled for Sept. 23-24. Delbert D. Hemphill, professor of horticulture, is in charge of the conference.

I'll never forget...

How they "pocketed" the hole and the money

by Superintendent Oren P. Stoner, Coffeyville Country Club, 1510 West 7th, Coffeyville, Kansas



"It was a perfect day for golfing when three members of a foursome hit perfect shots down the fairway from our first tee. The fourth topped his ball into the rough. While his disgruntled partner and jubilant opponents walked on to the green, it took him five minutes to find the ball. Then he hit it with such force that he worried for the safety of his partner, who was standing close to the hole with his back turned toward him. But to his relief

he saw the ball drop just behind his friend. Or so he thought. Actually, the ball had dropped into the back pocket of the partner's shorts. The latter then stripped them off, held the pocket over the hole, and shook gently. The ball rolled into the hole and some coins went into the pockets of the duffer and his partner, after they convinced their opponents that the hole had been legally won over a double bogey."

Don't you forget the proven way to maintain top playing conditions

1. Control turf diseases

with Du Pont **TERSAN® OM**
TURF FUNGICIDE

- Knocks out a wide range of diseases fast
- Provides long-term protection
- Large safety factor under all conditions

2. Supply nitrogen

from Du Pont **URAMITE®**
UREAFORM FERTILIZER

- Save time, labor—2 applications last all season
- Long-feeding nitrogen available as turf needs it
- Provides uniform growth, stronger turf

On all chemicals, follow labeling instructions and directions carefully.



TURF PRODUCTS

REG. U.S. PAT. OFF.

Better Things for Better Living...through Chemistry



Rogers Mfg. Co., Inc. 202 N. MAHAFFIE
OLATHE, KANSAS



Davis Grass Seed will help you establish and maintain a better wear resistant turf. We offer only seed of the highest purity and germination. Our prices are right. Immediate shipment from large stocks.

George A. Davis Inc.
5440 Northwest Highway, Chicago 30, Illinois



R. A. (Dick) Bruns, Jr. (l), president of the Iowa GCSA and supt. of parks in Cedar Falls, presents the association's annual contribution for turf research to John P. Mahlstedt, head of the horticulture department at Iowa State. The contribution amounted to \$3,500.

Winter Green Preparation

(Continued from page 46)

more because of the lesser amounts of seaside bent and poa.

In northern Florida, and farther north, some clubs like to use a little rye in addition to the poa trivialis and seaside. The purpose is to assure green grass during December and January. After that the other two grasses become aggressive. Best practice seems to be to seed with rye grass after the other grasses have germinated and started growth, a matter of two to three weeks. The seeding rate for rye is 20 to 25 pounds per 1000 square feet.

For Slopes and Aprons

Poa trivialis is superior to rye for overseeding aprons and slopes around the greens. It is better on tees for overall seeding and for use in the soil mix placed in divots. Poa trivialis was used on the 14th tee at Bel Air in Los Angeles. The seeding rate was 4 pounds per 1000 square feet. Seeding was in November. There was considerable poa trivialis left in this Tiffgreen (328) tee on July 10. Golfers were pleased with the turf on this tee.

Costwise the use of poa trivialis is no more expensive than rye grass. Nine pounds of poa contains as many seeds as