



**PAR**  
**AIDE**

***Golf in luxury!***

**WHEREVER  
GOLF IS PLAYED...**

***Par Aide Tee & Greens Equipment***

FOR DETAILED INFORMATION WRITE FOR CATALOG

**PAR AIDE PRODUCTS COMPANY,**  
296 NORTH PASCAL STREET • ST. PAUL, MINNESOTA 55104

DEPT. G



# SWINGING AROUND GOLF

News of the Golf  
World In Brief

By **HERB GRAFFIS**

## FRONT COVER

Colonial CC, Lynnfield, Mass., fell into step with several other Northeastern courses when it lighted its front nine several weeks ago. Colonial is a regulation layout. The lights on the front side are said to be more powerful than all the lighthouses in New England combined. Seen on the tee of the 165-yard sixth are Pete Zitso, Roseanna DiVacaris, Inez Connors and Connie Del Ninno. Golfers at Colonial start their rounds as late as 10:30, according to Sam Videtta, pro.

AD INDEX Page 97

EDITORIAL INDEX Page 98

The fourth American Golf Classic to be played Aug. 17-23 at Firestone CC in Akron, O., will carry a \$50,000 purse with bonuses totaling \$5000 . . . Members of the Southern California Junior GA will meet in the sixth Lee Hammil Memorial tournament at Los Coyotes CC in Buena Park, Calif., Aug. 10-12 . . . Last year, the Lee Hammil tourney attracted 260 juniors and ranks as one of the largest events of its kind on the West Coast . . . Held in memory of a youngster who died of leukemia, the tournament has raised over \$5,000 for the Leukemia Research Foundation of the University of Southern Calif.

An 18-hole course is listed as one of many recreation facilities available to guests of the new \$5-million Holiday Inn at Freeport, Grand Bahama Island, scheduled to open next year . . . Willowick GC in Santa Ana, Calif., reports that after a brief lull, the hole-in-one parade on the course's 150-yd. No. 2 hole resumed with four aces in two days . . . Vine Cliff GC in Rayland, O., almost matched Willowick with a report of five aces between May 22 and June 18, three of which occurred on three consecutive days.

Anthony Marengi, a writer for the Star-Ledger in Newark, N.J., reports that crowded conditions on Essex County courses have produced a new golf widow tale . . . Seems a wife who had viewed hour-long matches via TV questioned her husband's five and six hour absences for golf . . . Then the husband took his doubting spouse out for a round, tied up the course longer than usual and heard some nasty comments when he got back to the clubhouse.

Middlesex County, N.J., has opened a 9-hole course that it acquired from the federal government when Raritan Arsenal in New Brunswick was dismantled . . . Golfmore GC in Atlanta, Ga., owned by Jack Hall, has opened with a lighted Par-3 . . . R. Albert Anderson, course

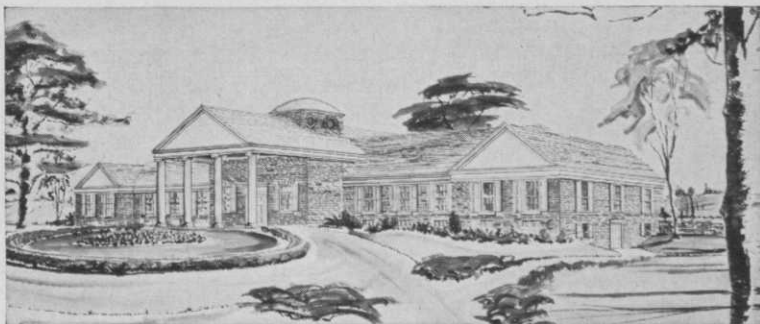
Feats of strength at  
Long Grove Country Club,  
Illinois...

**CAST IRON PIPE**  
starts its work  
above ground





Architect's rendering of Long Grove clubhouse. Scheduled for summer completion, this Illinois club covers 170 acres, includes an 18-hole, par 72 golf course among its facilities. Course architect is Robert Bruce Harris, Chicago.



In building Long Grove Country Club, the contractor faced two initial problems:(1) drain a large swamp (2) create a 10'-deep, seven acre lake. The answer: move the swamp water to the lake excavation. Use some of the club's newly-arrived cast iron pipe to do the job.

Two men quickly assembled 1200' of 6" cast iron pipe, running it over a 30' hill and linking swamp and lake areas. Pump hookup was made. Six weeks later: a new lake; no swamp.

Cast iron pipe had just begun. Three hours after the drainage job was completed the entire line had been disassembled, ready for permanent installation below ground as part of a modern irrigation system.

As the contractor (Maddox Construction Co., Batavia, Ill.) pointed out, only cast iron offered the right combination of strength and design features for this dual service job. No need for babying . . . quick assembly . . . tight joints.

Good reasons why Long Grove Country Club is dollars ahead with cast iron pipe. Now and for a century to come.

AN ASSOCIATION OF QUALITY PRODUCERS DEDICATED TO HIGHEST PIPE STANDARDS  
Alabama Pipe Co. • American Cast Iron Pipe Co. • Glamorgan Pipe & Foundry Co. • James B. Clow & Sons, Inc. • Lone Star Steel Co. • Lynchburg Foundry Co. • McWane Cast Iron Pipe Co. • Pacific States Cast Iron Pipe Co. • United States Pipe & Foundry Co.

#### Get this "best seller" free

Mail the coupon for your copy of "Golf Course Irrigation." This popular 20-page brochure is fully illustrated, offers a wealth of facts on planning, installation and operation of watering systems.



### CAST IRON PIPE

THE MARK OF PIPE THAT LASTS OVER 100 YEARS

#### CAST IRON PIPE RESEARCH ASSOCIATION

Wallace T. Miller, Managing Director  
3440-G Prudential Plaza, Chicago 1, Illinois

Send copy of booklet, "Golf Course Irrigation."

Name \_\_\_\_\_

Position \_\_\_\_\_

Name of Course \_\_\_\_\_

Address \_\_\_\_\_

City \_\_\_\_\_ Zone \_\_\_\_\_ State \_\_\_\_\_



architect with offices in Sarasota, Fla., and Racine, Wis., reports that Walt Flahive is the pro and Bill Ballentine, supt., at the new Forest Lakes CC in Sarasota . . . Other courses now under construction or recently completed by Anderson are Rolling Green GC in Prateesville, Ala.; Atlanta (Ga.) CC, which has plush apartments and home-sites surrounding it; 40-member club for Alfred Vanderbilt in Cape Haze, Fla.

Attachment to a putter isn't an unusual thing but most golfers limit its use to the greens . . . Harry Poli of Salem, Mass., though, is reported to use his putter on all holes for shots from bunkers and fairways . . . He recently scored an ace on the 150-yard eighth hole on the Salem munny course using a putter . . . The Ladies' PGA reports that membership has reached a record high of 130 . . . LPGA members in new posts are Mrs. Marian Kirschner now teaching pro at Cherokee CC, Madison, Wis., and Cynthia Sullivan, teaching pro at Range End CC in Dillsburg, Pa.

Carmine (Cookie) DeAndrea has signed as head pro at North Redoubt CC in Garrison on Hudson, N.Y. . . . Dick Wilson built the North Redoubt course in 1963 and the N.Y. Herald-Tribune Fresh Air Fund Pro-Am \$10,000 tourney is scheduled to be played there in October . . . The 150-acre Cedar Hill CC course in Livingston N.J., drew a bid "in the neighborhood of a million dollars" from the Essex County Park Commission . . . Essex County officials are interested in the course because of the large number of players that can be accommodated in a day . . . Cedar Hill is rated to accommodate 50,000 rounds a year, but this may be boosted to 70,000 under county supervision.

Sam Snead and Julius Boros will compete against Wes Ellis, pro at Mountain Ridge CC in West Caldwell, N.J., and Stan Mosel, pro at Essex Fells (N.J.) CC, in a benefit match on Sept. 20 . . . They will meet at Forsgate CC in Jamesburg and proceeds will go to St. Mary's Orphanage in Newark, N.J. . . . Ellis and Mosel met last month at Forsgate in the N.J. State Open championship.



When the recent Florida State Open was interrupted by rain (it only rains down there in the so-called off season), a pair of contestants, Roy Askew and Alton Park (mounted) repaired to a motel room with a horse. The threesome talked golf all the rest of the day.

Carol Sorenson of Janesville, Wis., and a student at Arizona State U., won the 34th Women's Trans-Miss Championship by defeating Connie Robinson, Pasadena, Calif., 5 and 4, in the final . . . The tourney was played at Arizona CC in Phoenix . . . 12-year old Barry Franzese recently shot a hole-in-one on the 167-yard 13th at Cape Coral (Fla.) CC . . . The youngster proved it was no fluke by winding up with a 72 on the 6,700 yard Cape Coral course . . . Chuck Ryan, who has been an assistant to Jim Fogertey at Sunset CC in St. Louis for the last three years, is quitting golf to go into business in Quincy, Ill. . . . His wife, Nan, handles publicity for the Ladies PGA.

Phil Gundelfinger, Pittsburgh Post Gazette golf writer, who labored for love but not much money in compiling a golf "Who's Who" in 1958, may try a comeback . . . That is, he's gathering material again to update the original publication . . . Compiling six years of records is no easy task, however . . . Gundelfinger estimates that his take from the 1958 Who's Who edition amounted to less than 10 cents per hour for the thousand plus hours he put in chasing down the material that went into the book . . . His Who's Who was patterned after the baseball edition . . . A publication of this kind that is brought up to date at the end of each season is needed in golf.

# TONY LEMA \*

**"the GREATEST"**



**TONY LEMA \***  
*member of the Ram advisory staff.*

- WINNER** *of the*
- THUNDERBIRD
  - BUICK OPEN
  - CLEVELAND OPEN
  - BRITISH OPEN

**DU PONT NYLON CENTER GOLF BALL**  
**...JUST WAIT TILL YOU PLAY IT !**



**RAM**

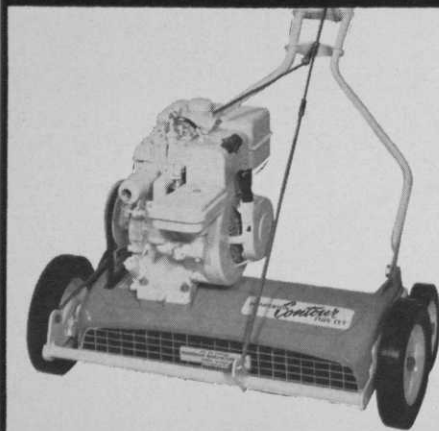
350 FIFTH AVE. NEW YORK, N.Y.

**SOLD THROUGH YOUR GOLF PROFESSIONAL SHOP ONLY**



# Reduce trouble spots and improve

greens,  
tees,  
fairways,  
and lawn  
areas . . .



with the handy Henderson Contour 18T-184 combination unit for renovating and mowing.

Unlimited flexibility, operating convenience, and performance have made the Henderson Contour Thin-Cut and Mower a favorite in golf course maintenance.

Proven by many years of use on golf courses in every state, the Henderson Contour Thin-Cut is the only renovator which converts to a mower. You get both for less than \$180

For full information about the 18" model shown above or the Contour 28, which renovates, mows and sweeps in one operation, write to:

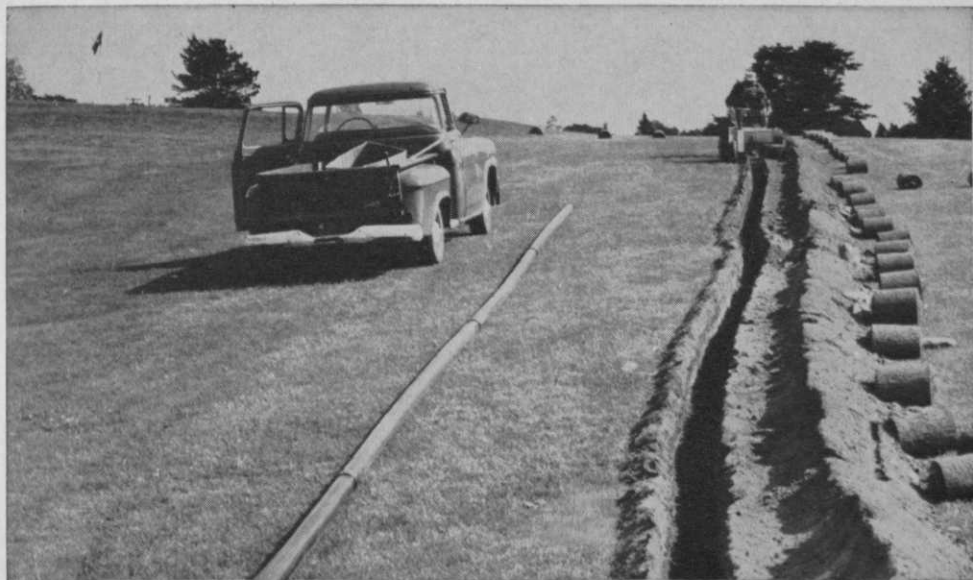
**HENDERSON**  
MFG. COMPANY  
FISHER 16, ILLINOIS

New officers for the 1965 Palm Springs (Calif.) Golf Classic will be announced after the August meeting of the board of directors . . . Paul Jenkins is temporary chairman, replacing Bob McCulloch, whose term has expired . . . Pinehurst (N.C.) CC opens its 70th season Sept. 22 . . . Colonial CC in Lynnfield, Mass., recently held what is claimed to be the first nighttime pro tournament under lights . . . Sam Videtta is the pro at Colonial . . . The Alex J. Porter Cup golf tournament is being played at Niagara Falls CC in Lewiston Heights, N.Y., Aug. 6-9, as a memorial to the club's tournament chairman who died July 2, 1964.

Shackamaxon G&CC, Scotch Plains, N.J. is back in top condition . . . Plagued by more than 20 years of bankruptcies, the course and clubhouse are said to have degenerated to an almost unusable condition . . . Eighteen months ago, Phillip Levin, a shopping center developer, bought the property to use in a proposed trade with the Suburban GC in Union, N.J. . . . Levin reportedly offered Shackamaxon one million dollars for the Suburban course which he wanted to use for a shopping center site, but was turned down . . . Then, he decided to restore Shackamaxon to pre-depression condition . . . The membership roster at Shackamaxon is filled for the first time in 30 years.

Al Wenrick, former supt. at Walnut Grove CC in Dayton, O., and early member of the Miami Valley GCSA, died in early June . . . New course construction in Ohio includes an 18-hole course northeast of Sidney, designed by Dick Nugent, former associate of Robert Bruce Harris . . . Nine-hole course being built in Tippicanoe City, O., to be opened next season.

Greenidge, Inc., to build 18 in Brookfield, Conn. . . . Jack Fleck won Illinois PGA championship with 66-66—132 (12 under par) at Bryn Mawr CC, Chicago . . . Jack is in his first year at Green Acres in Northbrook, Ill., where he succeeded Red Dennison who went to Riverwood . . . Ron Young, Clearwater (Fla.) Sun golf writer, widely known by pros who became acquainted with his fine coverage of golf when the PGA had its



**save your GREENS**  
**save your FAIRWAYS**  
**save your MONEY**

## **YARDLEY Engineered Pipe does all three**

Yardley offers both immediate and long-range economies because it costs less to install and less to maintain.

Savings on irrigation-system installed costs of 50 per cent and more have been reported, thanks to Yardley's ease of handling and joining. Heavy equipment is not needed to install this corrosion-resistant pipe. Permanent, leak-proof joints are made quickly by solvent welding. Installation takes less time than other types of pipe.

Through the years, maintenance is virtually non-existent on this durable pipe that's guaranteed not to rust, rot or corrode. Yardley pipe is approved by the National Sanitation Foundation which means that drinking fountains can be tied in with the watering system. The pipe's smooth internal

walls give a high rate of flow — allows more sprinkler heads to operate at one time.

Yardley engineered pipe and fittings for irrigation, water supply and drainage systems are distributed nationally. For complete descriptive information write: Dept. L-8, Yardley, Celanese Polymer Company, 142 Parsons Ave., Columbus 15, Ohio.

**YARDLEY**  
ENGINEERED PLASTICS

Manufactured By

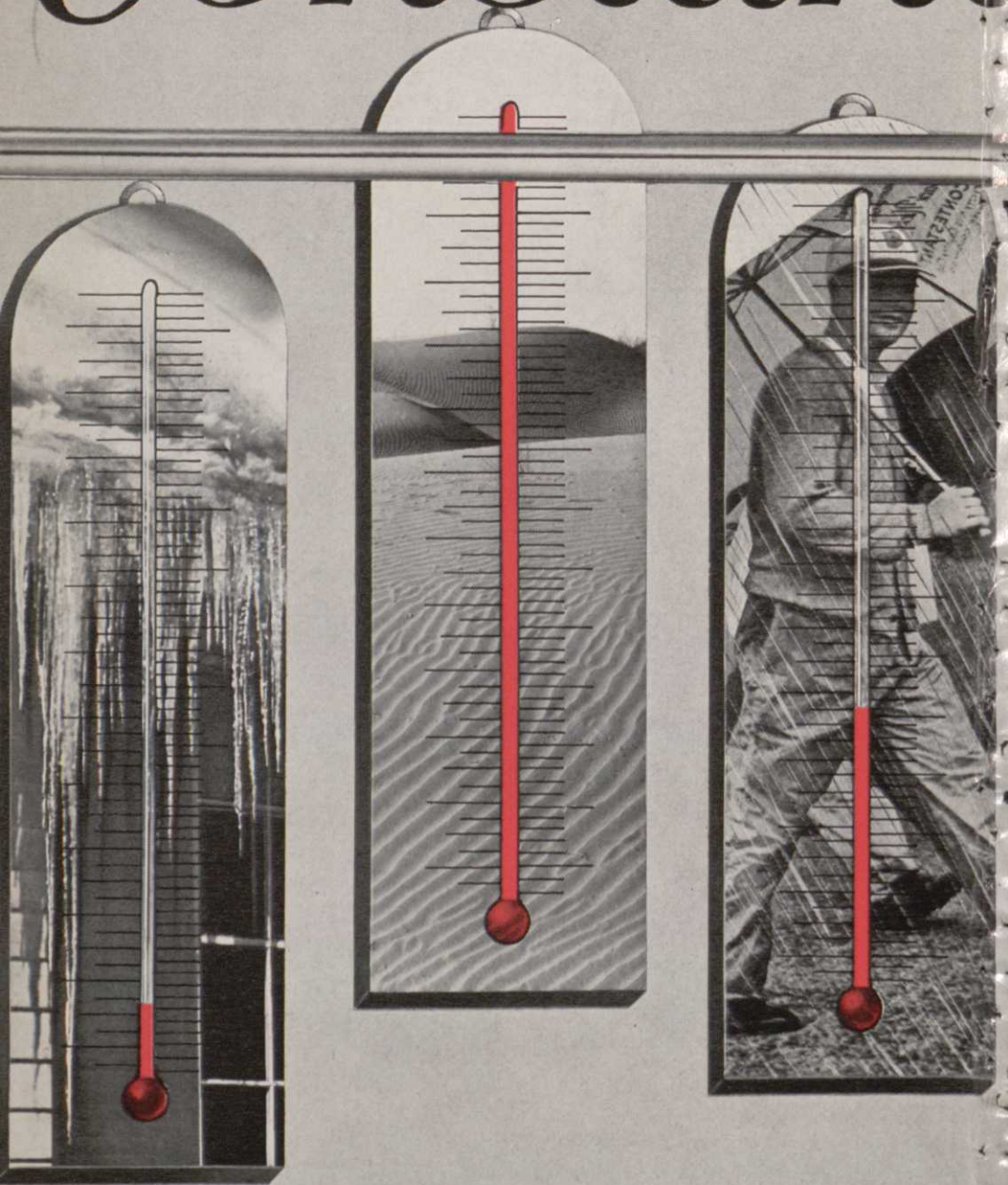
**Celanese**®

POLYMER COMPANY

A Division of Celanese Corporation of America



# Constant



Makers of better golf equipment since 1897