

## **Aerifying is Basic For Fall Renovation**

The spoons of all West Point Aerifiers® scoop out cores of soil so that surrounding compacted soil has room to expand. This stimulating treatment also provides loose-walled openings to allow for better penetration of water, fertilizer, lime and insecticides.

Your turf needs the cultivating action of the West Point Aerifier® — and fall is the time to do it.

There are three West Point tractor-drawn Aerifiers. The West Point distributor in your area will show you the Aerifier best suited to your needs.

**WEST POINT PRODUCTS CORPORATION**

West Point, Pennsylvania

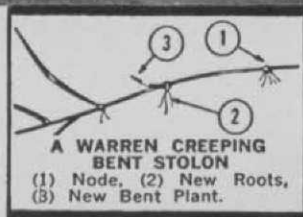


**FOR PERFECT  
PUTTING GREENS...**

**PLANT** *Warren's*  
*Creeping Bent* **STOLONS!**

The only way to obtain uniformity of color and a perfect putting surface is by planting vegetatively with pure-strain stolons. Seeding can result in "patchwork", different colored greens. Warren's pure-strain stolons make a putting green with a velvet-smooth texture and complete uniformity of color.

Toronto (C 15), Cohansey (C 7), Washington (C 50),  
Arlington (C-1), Congressional (C-19).  
Evansville (Certified)



**EVERY BAG OF WARREN'S STOLONS CONTAINS OVER A  
MILLION VIGOROUS NODES WITH A MINIMUM OF SOIL**

Shipped **AIR FREIGHT** for **SAME-DAY PLANTING** anywhere in the **NORTH AMERICAN CONTINENT**

**Warren's TURF NURSERY**

8400 W. 111th St., Palos Park, Ill.

Send us details on beautiful, hardy, vigorous greens and tees with

- Warren'STOLONS       Warren-TURF  
 FREE FOLDER: "Construction and Planting of  
Putting Greens and Creeping Bent Sod or  
Stolons"

CLUB NAME \_\_\_\_\_

ADDRESS \_\_\_\_\_

CITY \_\_\_\_\_ ZONE \_\_\_\_\_ STATE \_\_\_\_\_

SUPERINTENDENT \_\_\_\_\_

**FOR BEAUTIFUL LONG-  
WEARING TEES PLANT**

**Warren - TURF**

"There is no substitute for experience"



When Paul Hahn, the celebrated trick shot wizard, decides to change his place of residence he has to move more than just the furniture. What amounts to a pro shop full of golf equipment is also involved. The 9 oversize quivers and 1 standard size sheath shown here are only part of the collection Paul is shipping from Paradise CC in Crystal River, Fla., to Connie Mack Jr's Cape Coral CC, where he is making his new home. The bag on the left, containing 22 implements that pass as clubs, is used regularly by Hahn in his trick shot routine. The one on the right, is kept on standby status in case Paul goes west and his baggage goes east, which sometimes happens.

## Jay Hebert Named Chairman of PGA Tourney Committee

Tournament committee members of the PGA recently elected Jay Hebert to be chairman of that group. He succeeds his brother, Lionel, whose one-year term expired on July 31.

Jay Hebert first was elected to the tournament committee in 1956 and in 1957-58 he served as its chairman. A committee chairman automatically becomes a PGA vp and represents the tournament players on the pro organization's executive committee.

Newly elected members of the tournament committee are Johnny Pott and Dave Marr, who will serve two-year terms. They join Jay Hebert, Bob Goalby, who was selected in 1962, and Lou Strong, Wally Mund and George L. Hall, PGA officials. The seven man committee has charge of the PGA's tournament program.

The 40-year old Hebert attended Southwestern Louisiana Institute and Louisiana State and was a Marine officer in World War II. He became a professional in 1949. Besides winning the 1960 PGA Championship, Jay has claimed six major tournaments in his 14-year pro career. He was a member of the 1959 and 1961 Ryder Cup teams.

September, 1963

WHERE THE FINEST TURF

IS GROWN



GOLF TURF EXPERTS  
USE

**MILORGANITE**

— ALL SEASON LONG

They agree that regular, systematic feeding, Spring, Summer and Fall, with this Natural Organic Fertilizer builds durable, healthy turf, curbs weeds, fights disease. Follow their lead and you, too, will find that your fairways stay green, new roots and shoots develop, turf becomes tougher and thicker!



**EASIER HANDLING!**

MILORGANITE in the new 50 lb. bags is easier to handle, lends itself to one man application, results in less bag breakage, requires less storage space.

IF YOU HAVE A TURF PROBLEM,  
WRITE TURF SERVICE BUREAU

**THE SEWERAGE COMMISSION**

Milwaukee 1, Wis.

**MILORGANITE**  
The NATURAL ORGANIC FERTILIZER

**THE GRASS IS  
ALWAYS GREENER  
ON YOUR SIDE OF  
THE FENCE...**



when you specify

**XL TURF SPECIAL**

water soluble

28-7-14

**FERTILIZER**

**XL TURF SPECIAL** "the perfect formula" starts to work almost instantly, feeding through the *blades and roots*. Provides better control of growth, texture and color. Apply when needed, as a maximum dosage, or for continuous controlled feeding... *it will not burn!* **XL TURF SPECIAL** is compatible with all Doggett Fison insecticides and fungicides, and most others... cuts your labor cost to the bone!

*Seeing is believing—Try some now!*

**FREE SAMPLE**

Just return the coupon, we'll send complete information on **XL TURF SPECIAL**, and other products for custom application... your local distributor will **RUSH** a Free Sample of **XL TURF SPECIAL**.

**DOGGETT FISON COMPANY**  
SPRINGFIELD, N.J. • 201-DR 6-5900

Doggett-Fison Company  
Springfield, New Jersey

Please **RUSH** complete information, and sample of **XL TURF SPECIAL 28-7-14** Water Soluble Fertilizer.

My Name \_\_\_\_\_

Club or Course \_\_\_\_\_

Address \_\_\_\_\_

City \_\_\_\_\_ State \_\_\_\_\_

**PGA Holds Annual Meeting in  
Palm Beach, Nov. 29-Dec. 6**

Officers, delegates and committee members of the PGA will gather at Palm Beach Towers hotel, Palm Beach, Fla., Nov. 29-Dec. 6, for the 47th annual meeting of the PGA. Members of the PGA advisory board and representatives of golf goods manufacturers will hold their conferences at the same time.

Any PGA members may attend an "open forum" session with members of the Executive committee and delegates. Other sessions, except the teaching program on Tuesday, Dec. 3, are closed.

Members of the outgoing executive committee, headed by Pres. Lou Strong will meet Friday, Nov. 29 and Nov. 30. Opening of the PGA's two 18s, clubhouse and office building is set for Dec. 1.

The annual President's dinner will be held Dec. 3 at a location other than Palm Beach Towers.

Henry C. Poe, Reading (Pa.) CC, will be general chairman of the 1963 annual meeting. He handled this post in 1961 and 1962. Don Waryan, Hazeltine National GC, Hopkins, Minn., chairman of the education committee, is planning the teaching program.

**Five California Colleges  
Offer Horticulture Schooling**

According to the Turfgrass Advisor, published by the agricultural extension service of the University of California, several colleges offer courses in park and recreation areas that take in horticulture, soils, entomology, design and related subjects.

The Davis campus of the U. of C. has a four-year park administration major that prepares the student for work in a number of fields. California State Poly also will offer a park administration course, starting in Sept., 1964.

Mt. San Antonio College has worked out an agreement with the GCSA and three California golf associations to train youths to become supts. in a specialized two-year course. This program doesn't go into effect until next year, but students may take courses in 1963 to prepare for it.

Reedley College has initiated a two-year landscape horticulture course as has Pierce Junior College in Woodland Hills. Pierce's curriculum is designed to prepare the student for four-year degrees in the horticultural field.

# NEW ROSEMAN

# HI-CUT ROUGH MOWER

## SHOWN • PROVEN • ACCEPTED

*Thank you, Mr. Superintendent, for your valued comments.*

The new Roseman Hi-Cut mower, introduced at our recent series of Roseman Days, has been proclaimed the outstanding rough mower on the market today.

The design and performance characteristics that elicited this opinion were the "high-cutting" feature, the large, rugged, 4-bladed 10" reels, with heavy-duty blades, riveted — not welded; the non-breakable malleable side frames, and the puncture-proof laminated tires, with caterpillar-type lugging ability that gave positive, constant cutting action in the toughest, thickest and deepest rough grasses.

It was observed that the Roseman rear-

drive design eliminates bobbing of the cutting reel; allows faster mowing speeds with all grass cut to uniform height, and with substantial time and labor savings.

Also the Roseman, rear-drive design permitted trimming close to obstructions and over traps, bunkers, shrubby beds and curbs, with great economies in hand labor.

We are pleased with the wonderful reception you gave the new Roseman Hi-Cut mower designed to mow your rough areas in an improved manner and at far less cost. We invite you to make your next rough mower a Roseman Hi-Cut model.

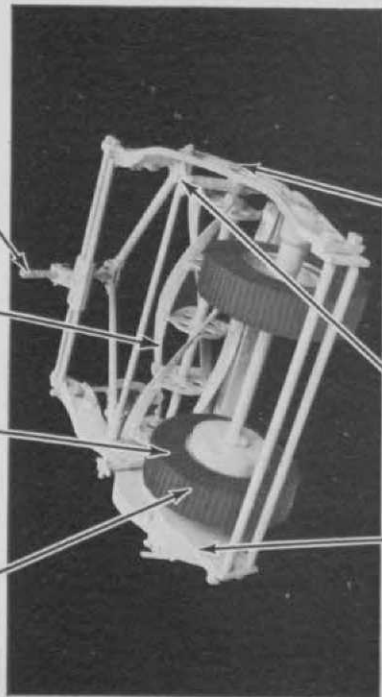
## NOTE THESE OUTSTANDING FEATURES

**REAR WHEEL DRIVE**  
Hug ground for smooth cut. Permits trimming over traps close to trees.

**LAMINATED PUNCTURE PROOF TIRES**  
Trouble-free, no bouncing, more traction.

**RUGGED, LARGE 10" REEL**  
Heavy-duty blades, riveted not welded.

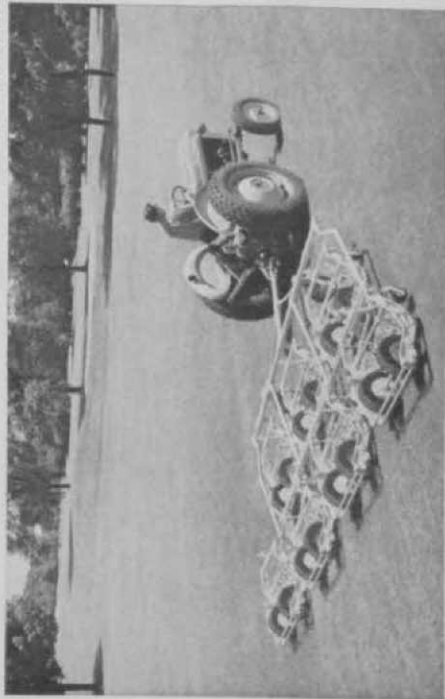
**HI-LOW-CUT FEATURE**  
Quick, simple height change.



**NON-BREAKABLE SIDEFAMES**  
Tough malleable construction

**HAND ADJUSTMENT FEATURE**  
Simple, no tools required.

**SHARPENING FEATURE**  
For lapping in reel blades.



## MAKE YOUR NEXT GANG ROSEMAN



**ROSEMAN MOWER CORPORATION**  
2300 WEST LAKE AVENUE  
GLENVIEW, ILLINOIS

Nation-Wide Sales and Service

# NU-TYPE<sup>®</sup> Green Lawn Spray

(A Paint, not a Dye)

Gives a beautiful,  
lasting green color  
to dormant grass,  
brown areas, etc.

**Fade Resistant**  
**Will Not Harm Vegetation**  
**Rain Resistant**

SEVERAL TERRITORIES STILL  
OPEN FOR DISTRIBUTORSHIP.

Manufactured by

## The GREGG Co.

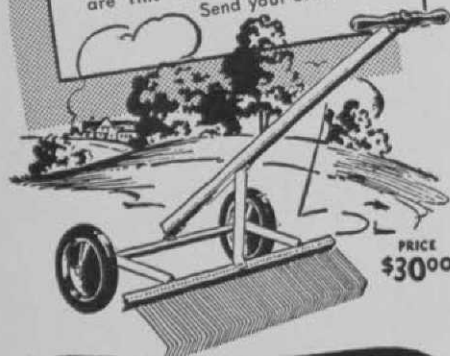
P. O. Box 149  
Riverton, N. J.

1963 Our 30th Anniversary

### DEL MONTE GREENS RAKE

This rake does the job of removing dead grass and runners from your greens more thoroughly . . . The rake is attached to a dolly for easy handling . . . Wire tines are fine and stiff.

Send your order NOW



PRICE  
\$30<sup>00</sup>

## George A. Davis Inc.

5440 Northwest Highway, Chicago 30, Illinois

## Keeping in Touch at Tucson

(Continued from page 52)

rade officials. Even safecrackers find use for them.

Allied estimates that 25 per cent of the million Citizens Band transceivers in use are portable walkie-talkie rigs. The type used at Tucson National has a 1-watt input rating and an effective range of up to 5 miles in flat, open country. The units used at Tucson National adequately cover the extreme distance between any two points on the course, according to William Nanini, developer of the club.

### Exam Not Necessary

For the Knight-Kit KG-4000, a Federal Communications Commission license is required, but there is no examination needed. An application for a permit to operate comes with each kit. The FCC has already issued more than 400,000 CB licenses and is processing about 22,500 each month.

The units used at Tucson National employ nine transistors. They have telescopic antennae, local-distance call switches and provision for connecting an earphone or external speaker. A squelch circuit eliminates background noise when no signals are being received. Power is supplied by flashlight batteries or a rechargeable nickel cadmium cell.

## In the Texas Tradition

(Continued from page 30)

peting, the furniture and, of course, the merchandise are shrewdly combined to demonstrate Abe's sales theories:

- (1) Golf is a game for sunshine, so gay, colorful displays fit perfectly into the staging of golf merchandise sales;
- (2) There is something about lively colors that stirs buying impulses.

The Ranchland Hill pro shop is definitely one of the big attractions of the club; so distinctive, in fact, that golfers for hundreds of miles around Midland talk about what they have bought and what they are planning to buy at Honest Abe's shop. The personality of the shop, its big stocks of fine quality golf merchandise and the friendly service of Beckman and Walker put a premium in the buyers' minds on what is bought at Ranchland Hill.

Look for it! Golfdom's  
October Annual Planning Issue





**Ryan GREENSAIRE Removes Over 200,000 Full  
Depth Soil Plugs Per Hour For Uniform  
Immediate Relief of Compaction.**

- Cores without surface disturbance on 2" centers to 3½" deep.
- Tested, trouble-free design, rugged construction
- Keeps greens in championship condition all season

Cover fairways, parks, athletic fields, highway greenbelts, other big turf areas fast, thoroughly, and economically with the dependable 8' Renovaire Monarch or 4½' Renovaire Chief. Exclusive true contour aeration . . . short radius turns without ripping or skidding . . . easy job-to-job transport on permanent pneumatic tire wheels. Call or write for specifications and a demonstration.



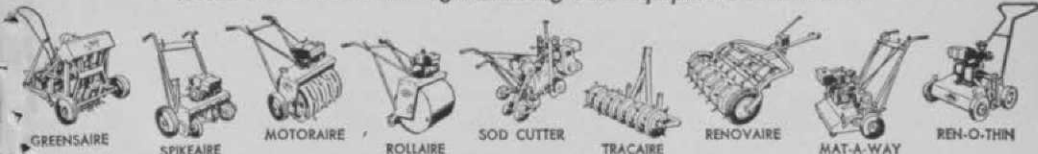
**LANDSCAPING EQUIPMENT**

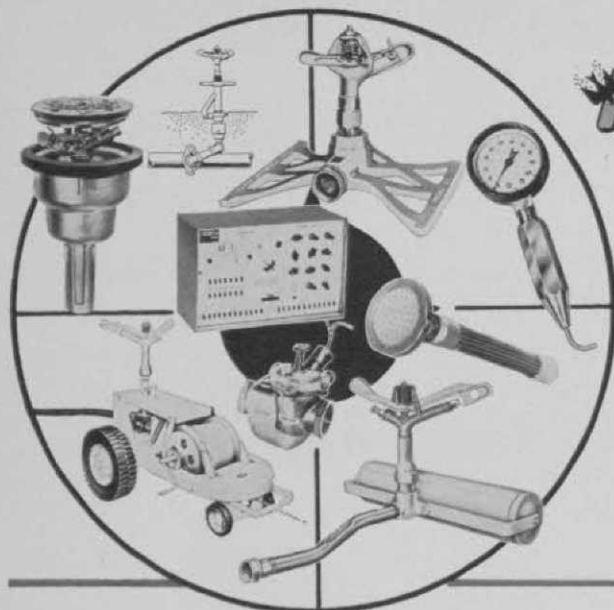
*Division of K & N Machine Works*

871 EDGERTON STREET • ST. PAUL 1, MINN.

*Company*

World Wide Sales Through Leading Turf Equipment Distributors





# NELSON RAIN BIRD

*The World's  
Most Complete  
SPRINKLER LINE!*

When you specify Nelson - Rain Bird Sprinkling Equipment, you have available a full and complete line of the world's finest sprinkling equipment: from specialized hose nozzles, hose sprinklers on sled and roller bases to the unique Rain Train traveling sprinkler... from Quick Coupling Valves for underground sprinkler installations and pressure gauges to completely automatic equipment with remote control electrically or hydraulically operated valves.

This means that your specific needs can be met with maximum efficiency — lowest cost and complete satisfaction — all from one reliable source!

For complete engineering and design information, contact your local Rain Bird Dealer or write direct to:

IN WEST: NATIONAL RAIN BIRD SALES & ENGINEERING CORPORATION  
P.O. Box 547 • Azusa, California

IN EAST & MIDWEST: L. R. NELSON MFG. CO., INC.  
RAINY SPRINKLER SALES DIVISION  
609 West Lake Street • Peoria, Illinois

## Ladies PGA Stages Fourth Golf School in North Carolina

The fourth annual national golf school of the Ladies PGA, held at the Women's College of the U. of North Carolina in Greensboro in July, attracted 64 students who came from 17 states and Canada. The five-day program was basically devoted to instruction, panel and individual discussions, the showing of films and play under tournament conditions. Leading LPGA players, including Mickey Wright and Kathy Whitworth, served as instructors. The school was run under the supervision of Ellen Griffin, connected with the Women's College, and Shirley Spork.

A new feature was introduced for this year's school. It was a model pro shop, operated by Myra Chastain, and stocked with equipment contributed by various manufacturers. To fully acquaint the students with equipment, the LPGA imported Boyd Jaeger, pro at Emerywood CC in High Point, N.C., to demonstrate how club repairs are made.

The student group was made up of college and university physical education teachers and representatives of civic organizations and country clubs.

## Standard Club Under Lights

*(Continued from page 35)*

hole, besting the 420-yard hole which Brandywine in Niles, Mich. (Golfdom, May, p 106) successfully test-lighted. Tall Pines also lists a tough 420-yard par-4, a 415-yard par-4 and 215-yard par-3, in coming up with its 3230 yardage.

### Isn't A Pushover

The course is by no means easy, not only because of the lengthy holes, but because it has 28 deep "no-putt" traps, 1000 new trees and bushes, out-of-bounds on five holes, large rolling greens with tricky pin placements, and three-inch rough bordering the fairways and covering the first 150 yards of each hole. The course record at the five-year-old club is a two-under 33 for nine and three under 67 (33-34) for 18.

The beauty of the scenic course is not marred by the lighting. All wiring is underground and the wood poles blend in well with the surroundings. The floodlights are aimed down the fairway, out of the golfer's eyes and with their cast aluminum backs absorbing any wild shots. There is no bug problem.





Par-4, 295-yd. 8th

## Here's how Mendakota C.C. has achieved good grass color and texture on their greens



Vern Hansen

"AGRICO fertilizers have given my grasses the color and texture I want, particularly on the greens," says Vern Hansen, superintendent at Mendakota Country Club, St. Paul, Minnesota.

"The release of nitrogen from AGRICO is slow and steady, with no burning of the

greens. I'm also very pleased with the way hydraulic feeding has worked out in the Agrico Program."

For the best and latest in turf care, ask your Agrico Representative for an AGRICO COUNTRY CLUB-AGRINITE Feeding Program for your course. Or write: The American Agricultural Chemical Company, 100 Church Street, New York 7, New York. In Canada: Agricultural Chemicals Ltd., Toronto 15, Ontario.

# AGRICO<sup>®</sup> COUNTRY CLUB FERTILIZERS

**AS WIDE  
AS HE  
IS  
TALL!**



The Mulch-Vac Sweeper removes and disposes of a 6-5" swath of leaves and grass in one swoop.

The Mulch-Vac is as versatile as a basketball player and cleans a swath as wide as he is tall. Use Mulch-Vac for Spring clean-up... Summer grass clippings... and Fall leaf removal and disposal.

Mulch-Vac can play the pivot position on your clean-up team... and one man can operate it.

**B-25 MULCH-VAC**

Also: Snow Plows, Spreaders, and Industrial Power Sweeper

**GOOD ROADS MACHINERY CORPORATION  
MINERVA, OHIO**



**"QUALITY GUARANTEED"  
BENT GRASS STOLONS**

Our stolons are shredded in the field, packed two bushel per bag as shown in picture and are shipped immediately.



**Send  
for  
Price  
List  
Today!**

**True to Name,  
Weed and Seed Free!**

- Washington (C-50) • Cohansey (C-7)
- Congressional (C-19)
- Arlington (C-1) • Toronto (C-15)

**WE SHIP ANYWHERE IN THE UNITED STATES  
(24 hour Air Freight Is Available)**

**Phone: Area Code 313 531-0361**

**HIRAM F. GODWIN & SON**

22366 Grand River Ave., Detroit 19, Mich.  
A Reliable Source of Supply Since 1920

**Woehrle: Don't Choke Up**  
(Continued from page 26)

used to bring the practice tee back to normal.

If tournament sponsors are looking for suggestions to improve their operations, the most important idea I can offer is to provide more crossovers so that galleryites can move more freely from one area to another. These should be as close to the tees as possible. On par five holes it would be wise to install two crossovers. They should be distinctly marked and an effort should be made to inform the fans of their locations.

**Advice to Supts.**

As for supts. who aren't enthused about having a national tournament brought to their clubs, I say this: Don't worry about it. A tournament can be handled through routine preparation, especially if you get a break in the weather. In the two weeks preceding the tournament there may be numerous small details that have to be cleared, but you're undoubtedly used to such things. During the tournament itself, you're caught up by the fever and excitement of the event and momentum kind of carries you through, even though you may put in two or three 20-hour days. When it's all over, you're happy to know that you can handle a project as big and important as one of the year's outstanding tournaments.

Also, don't overlook the press and TV and radio men. On the morning the tournament started, I went into the press tent and described the condition of the course and explained how the heavy rains of the previous week had undone some of our preparations for the tournament. Everyone was sympathetic and I'm happy to report that, as far as I know, not a single derogatory word was written or spoken about the course's condition. Incidentally, I also spelled out my name for the writers and sportscasters just in case they wanted to mention it. I think we all agree that a little personal publicity doesn't hurt any of us.

**Illinois Field Day**

The Illinois turf field day will be held Sept. 16 at Urbana. The morning session will be held at the University's horticulture farm on S. Lincoln ave., and the afternoon portion is scheduled for the University's turf research area on the 18-hole course in Savoy.