

greens, 27 tees, a small clubhouse and exclusive male membership of about 150 on which construction will start soon . . . It's located in suburban Omaha . . . City of Lincoln, Neb. to build a Juniors' course . . . Floyd Farley is the designer . . . Wayne Otto leaves supt. post at Sunset Valley GC, Omaha, to become supt. of two muni courses in Lincoln . . . Otto is a graduate of Bert Musser's course at Penn State and was with Harold Glissmann for two years . . . Dean Frazzee, Otto's assistant, succeeds him at Sunset Valley.

Winifred Pedersen, Paul's widow, who is doing great at running a club manufacturing business, recently took time off to play Woodway CC, Darien, Conn., and rapped in a 5-iron tee shot on the 150 yd. 15th water hole . . . Vince Yammerino, pro at Allendale CC, N. Darmouth, Mass., tells of a 13-year-old kid, Dave Waxler, who banged a 5-iron shot in for an ace on the Allendale 170 yd. 14th . . . Vince adds that his assistant, John Camacho, recently batted a 240 yd. shot to a blind green and holed out.

New 18 of Caldwell (Ida.) GC being opened . . . Boyd Harris is president, Einar Allen, pro, and George Nial, supt.

**AS WIDE
AS HE
IS
TALL!**



The Mulch-Vac Sweeper removes and disposes of a 6'-5" swath of leaves and grass in one swoop.

The Mulch-Vac is as versatile as a basketball player and cleans a swath as wide as he is tall! Use Mulch-Vac for Spring clean-up . . . Summer grass clippings . . . and Fall leaf removal and disposal.

Mulch-Vac can play the pivot position on your clean-up team . . . and one man can operate it.



B-25 MULCH-VAC

Also: Snow Plows, Spreaders, and Industrial Power Sweeper

**GOOD ROADS MACHINERY CORPORATION
MINERVA, OHIO**



**STANDARD'S
NEW LOW COST
TEE MARKERS
JUST \$1²⁵**

**Virtually Unbreakable
Bright Lustrous Finish
Tremendous Resistance
To Scratching, Marring**

The finest low-cost tee markers available! Solid plastic - almost steel hard - won't split or crack. Super-tough 3 layer finish of special resin resists scratches, bruises . . . stays bright, new looking. Sparkling colors highly visible. 3 1/2" diameter, 4 inch spike. Your choice of red, yellow, blue white.



**STANDARD MFG. CO.
CEDAR FALLS, IOWA.**

THE GRASS IS
ALWAYS GREENER
ON YOUR SIDE OF
THE FENCE...



when you specify

XL TURF SPECIAL

water soluble

28-7-14

FERTILIZER

XL TURF SPECIAL "the perfect formula" starts to work almost instantly, feeding through the *blades and roots*. Provides better control of growth, texture and color. Apply when needed, as a maximum dosage, or for continuous controlled feeding... *it will not burn!* **XL TURF SPECIAL** is compatible with all Doggett Fison insecticides and fungicides, and most others... cuts your labor cost to the bone!

Seeing is believing—Try some now!

FREE SAMPLE

Just return the coupon, we'll send complete information on **XL TURF SPECIAL**, and other products for custom application... your local distributor will **RUSH** a Free Sample of **XL TURF SPECIAL**.

DOGGETT FISON COMPANY
SPRINGFIELD, N.J. • 201-DR 6-5900

Doggett-Fison Company
Springfield, New Jersey

Please RUSH complete information, and sample of XL TURF SPECIAL 28-7-14 Water Soluble Fertilizer.

My Name _____

Club or Course _____

Address _____

City _____ State _____



Winners of the 14th Press Thornton Future Masters, played recently at Dothan (Ala.) CC where Telfair Ghioto is pro, were: Ben Duncan (10 and under age group); Eddie Pierce (11-12); Tim Taylor (13-14); Wendell Coffee (15-16); and Tom Barnes (17-18). Young Barnes had a 210 for three rounds and Coffee, a 215. Taylor scored a 152 and Pierce, a 160. Duncan shot a 90.

... Club's old nine is being kept in play... Renee Allen, Einar's wife, says she and Einar, who have been at courses in six states, regard Caldwell as the most enthusiastic golf city they've ever seen... "In almost every back yard you see golfers practicing chip shots," adds Renee... Shirley Englehorn, LPGA star, learned to play on Caldwell's first nine.

Dave Lilly, Toro Mfg. pres., has retired from a sideline job he handled with considerable success... Dave coached the golf squad of St. Paul's school at Minneapolis... The prep school kids won 36 consecutive matches and for two years were undefeated in their league... One of Dave's lads, Rick McMillin, played No. 1 at Princeton... Another one, Norman Harris, is playing at Yale... Tom Garrett, who starred in Twin Cities prep school golf the past two years, now is at Duke... The Harris boy beat his coach 3 and 2 in the 36-hole final of the Somerset club championship a few weeks ago... Lilly was 2 up at 27 but the kid cut him down.

Irwin Smallwood, Greensboro (N. C.) News sportswriter, cites evidence that Boone (N. C.) CC and Middlesborough (Ky.) CC golf courses were being played in the late 1880s... Irwin says Arthur Roehner, a retired attorney, tells of caddying on the Middlesborough course in 1896, when it had been in play several years... Women of Pebble Lake GC, near Fergus Falls, Minn., headed by Mrs. Don Mauch, worked about 800 hours painting, sanding, finishing and otherwise decorating Pebble Lake's new clubhouse... They did a remarkably fine job in building and outfitting the women's section of

the clubhouse.

Royal Oak G&CC, Titusville, Fla., building 18 to plans of Dick Wilson . . . It's surrounded by 800 building lots on streets named for pros . . . John Redman, formerly pro at Royal Palm Yacht & CC, Boca Raton, Fla., named Royal Oak pro . . . Nassau County, N. Y., figuring on lighting the Blue 18 of the three county courses at Salisbury . . . Considering use of 260 40 ft.-high poles and General Electric equipment . . . West Bend CC, Sheboygan, Wis., planning to build \$165,000 clubhouse.

Southern Seniors GA's third annual senior 4-ball invitation amateur championship at Port St. Lucie CC, Ft. Pierce, Fla., Nov. 19-23, expected to reach its limit of 200 entries weeks before starting time . . . There's also a 54-hole event for contestants' wives . . . Sarasota, Fla., committee believes that it has accurately located first nine hole course in Florida which was built by Col. J. Hamilton Gillespie shortly after 1886 when he laid out a short course near where Mira Mar hotel now is located.

Very good business and public relations for PGA in application blank for PGA bus-

LAWN MOWER SHARPENING



**Pays
An Average
of \$12⁰⁰ PER HOUR**

That's what owners of MODERN lawn-mower sharpeners in garden stores throughout the country tell us they average. Many tell us the MODERN sharpener has paid for itself several times over the first year.

No Need to Remove the Reel

Sharpen the bedknife and the reel *in the mower* with a MODERN sharpener. It's simple to operate. The entire mower raises easily to the proper height. A *single* hand lever brings the reel and bedknife into position . . . ready for sharpening.

• Precision Results •

The MODERN sharpener precision grinds to tolerances of 1/1000 in. or better. That's equal to splitting a human hair 3 ways!

A Model for Any Mower

There's a MODERN sharpener to handle any job . . . including mowers with blades up to 53 inches wide. With the optional Rotary Blade Holder, you can sharpen and balance rotary blades, too. Other attachments available for sharpening planer blades, jointer knives, ice skates, and scissors . . . all on the same machine.

Send for **FREE Literature and Prices**

FOLEY Manufacturing Company

1087-3 Ringer Bldg., Minneapolis 18, Minn

Please send folder and information on Modern Lawn Mower Sharpener.

NAME _____

ADDRESS _____

CITY _____

STATE _____

ATTENTION! —Golf Club Officials, Owners, Managers, Superintendents Golf Professionals



Fibre side brushes. All brushes removable, reversible, replaceable. In grey, orange, yellow. 1 unit \$19.95; 3 or more \$17.95 ea. FOB Huntington Park, Calif.

GOLF SHOE VALET

. . . aids you in keeping carpet and floor clean in clubhouse, pro shop and locker room. Cleans grass & mud from bottoms AND sole edges of shoes. Anodized aluminum frame with base brush of hard wood and heavy duty plastic bristles. Tampico

ALUMINUM TEE MARKERS

. . . In USA recommended colors — Red for front tees, Blue for back tees, White for middle tees, Aluminum for women's tees. Custom made to conform to your score card. 9 hole set, \$85.50; for 18 holes, \$165.50.



GOLF COURSE SIGNS

In Lifetime Aluminum

Strong — Easily Read

5" x 8" and 5" x 10" signs in embossed aluminum with enamel finish. Special wordings available. In Black, Orange or Yellow letters on White background. From \$3.25 to \$5.75. Stakes .75 each.



NOTE: Postage paid if check received with order.

GOLF COURSE SPECIALTIES

P. O. Box 388,

Huntington Park, California

Complete Golf Course Construction

MOORE GOLF, INC.

DIVISION OF
MOORE, KELLY & REDDISH, INC.

Roads, Lakes, Playing Fields, Irrigation Systems

Box 606, Orange, Va.

Tel. 7357

ness school . . . Endorsement of president of club at which applicant is employed is among recommendations required . . . Name of sports editor (or editors) of applicant's local newspaper also required on applications . . . It is pleasing to see Ralph Guldahl in golf headlines again as a newcomer to the PGA Hall of Fame . . . Guldahl is pro at Deauville CC near Tarzana, Calif . . . Deauville has 1,500 members and 45 holes of golf . . . Ralph won the National Opens of 1937 and 1938, the Western Opens of 1936, 1937 and 1938 and the Masters in 1939.

Charlie Pace, formerly supt., Tamarac CC, Ft. Lauderdale, Fla., now building 18 which he designed for Golden Hills Turf & CC, Ocala, Fla. . . It's in the heart of Florida's thoroughbred horse country . . . The club will have training track, polo field, show ring, stables, bridle paths in addition to de luxe golf and country club facilities . . . Newsletter that the Ledges CC, Roscoe, Ill., is sending to its members is excellent job of informing members in a new club what is going on . . . The Ledges is a club that's being fi-

nanced to a considerable extent by sale of bordering lots . . . If they've got spare copies of the Ledge's Newsletter, send stamped return envelope to Alfred J. Bowen, The Ledges, Roscoe, Ill., and get one.

After 20 years on the road as a pro salesman, Sammy Sigh and his wife, Dottie, who travelled a lot with him, now are with Mike Sullivan at Indianapolis Speedway 500 course . . . Sammy teaches in the morning and he and Dottie are in Mike's shop in the new \$2½ million clubhouse in the afternoon . . . Sammy declares the shop is one of the best in the midwest.

New tournament has been added to the PGA fall schedule . . . It's the Fig Garden Open Invitational, to be played Oct. 24-27 at San Joaquin CC in Fresno, Calif. . . . It's a replacement for the Ontario Open and offers \$25,000 in prizes . . . Gene Stoddard, 485 Costa Mesa st., Costa Mesa, Calif., handles employment applications for the Southern Calif. GCSA . . . Supt. Bill Nuessle spent the summer getting the first 9 of the Lake San Marcos CC, San Marcos, Calif., ready for an October opening . . . Ted Hopkins, manager of Minoc-

ALFRED H. TULL

GOLF COURSE ARCHITECT

Member

American Society of Golf Course Architects

LARCHMONT, N. Y.
TEL. TE 4-4017

James G. Harrison

Ferdinand Garbin

GOLF COURSE ARCHITECTS

Member

American Society of Golf Course Architects

266 Harrison Road
Turtle Creek, Pa.
823-3444

R. R. 2, Box 186
Export, Pa.
327-4704

SPIKE RESISTANT PNEU-MAT RUNNERS



Save your Club House Floors

MONEY BACK TRIAL OFFER:
Order a 24" x 60" trial section at \$12.50 postpaid. Test it on an area which gets especially hard wear. Money back if not satisfied.

• Rugged, reversible Pneu-Mat Runners, woven of rubber-impregnated fabric, outwear rubber, provide comfortable walking for spiked shoes with complete floor protection. Improve club house appearance. Competitive in first cost—lowest in long-life cost.

Standard Widths 20"—24"—30"
36"—42"—48"

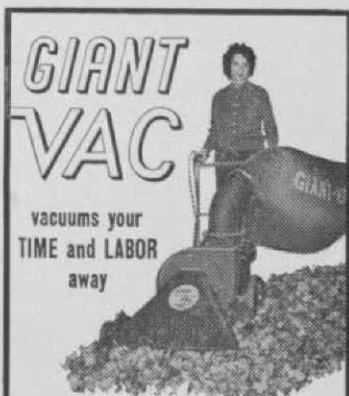
Write today for illustrated folder

SUPERIOR RUBBER MFG. CO., INC.
145 Woodland Ave. • Westwood, N. J.

qua (Wis.) CC reports that 83-year old Charles Hauser shot a hole-in-one on a 151 yard hole recently . . . Hauser has been playing nearly every day for a long time, but this was his first ace, according to Hopkins.

Second Scottsdale (Ariz.) Senior Fiesta will be held Apr. 6-11, 1964, according to Scottsdale C of C . . . Ohio Turfgrass Council, founded in 1961, recently started publishing a newsletter . . . Twenty-four students were enrolled in the first turfgrass course taught at Ohio State U. last spring . . . The course will be conducted during each spring quarter in the future . . . Santa Ana (Calif.) CC used a walkie-talkie hookup this year in reporting scores of the club championship . . . Pro Gerald Hall introduced the idea . . . During the summer 142 high school grads were granted Evans scholarships . . . They are among the 467 young men who are in college now on Western Golf cadie grants.

A quick glance at the Ladies PGA money list gives the impression that the gals perhaps split the prize purses more equitably than the male pros . . . Mickey Wright, through Sept. 14, had won 10 of 22 tournaments but had earned only a little more than \$3,000 more than Kathy Whitworth, runnerup on the list . . . Kathy, however, had claimed five tourney victories at that time . . . Clinton Kent Bradley of Wayne, N. J., recently donated more than \$100 to the Rutgers University turf scholarship fund . . . It's part of the profits from his firm's sales of towels and golf flags . . . Players in a recent mixed tournament at Westview CC, Miami, Fla., were given copies of "Life With Women and How to Survive It" . . . Even the ladies got copies which, of course, they didn't read.



vacuums your
TIME and LABOR
away

Giant-Vac keeps your property clean and attractive with little effort and labor. High speed impeller blades, developing air velocities over 200 miles per hour, pulverize all types of waste and litter discharging them into the large dust control bag for easy disposal.

LAWNS • GOLF COURSES • MOTELS
DRIVE-INS • SHOPPING CENTERS

H. M. WISE

212 Helen Ave., Mansfield, Ohio

GOLF COURSE DESIGN & CONSTRUCTION

No job too large or small. Let me give you an estimate.

Call or Write —

J. H. WATERS, JR.
Phone — 822-2093

Gregory Lake
North Augusta, S. C.



The
HENRY GOLF BALL WASHER
BEST AT ANY PRICE

Rubber Squeegee and Rubber Gasket massage the ball as gently as your hand.

Two full turns of the crank, rotate the ball approximately 20 times — will operate efficiently even when water reservoir is down to its last ounce of water. Every line of the Henry Golf Ball Washer is attractive — Housing is heavy gauge steel

The Henry has been proved and accepted by leading Golf Courses around the world.

DEALERS IN ALL PRINCIPAL CITIES

only
\$14.75
 Prices F.O.B.
 Waukesha, Wis.

A. C. Schendel,
 Distributor
 N16 W22419
 Hwy. S.S. Rte. 3
 Waukesha, Wis.

Pros at least one sectional PGA meeting made fiery comments about golf magazines that push advertising to get golf business away from pro shops . . . Pros resent being two-timed by magazines running ads promising their customers "Golf closeouts at ridiculously low prices," "special low prices," and "pay far less for any golf equipment." On the other sides of their mouths, the magazines ask for pro support of their under-cutting operation . . . Golfing Magazine's policy of refusing advertising contrary to pro interests has proved to a very reliable defense against price-slashing competitive advertising, pros agree . . . It has cost Golfing money for standing up on the pro side.

Opening of New York City's Marine Park 18, the city's 12th, has completed a 10-year job of building a beautiful public utility on a garbage dump . . . New York City's public courses are expected to have more than a million rounds for all of 1963 . . . Tee markers at Papago, new many course in Phoenix, are outlined as Indians and rabbits . . . The showmanship makes a cheerful impression . . . Frank Lamphier, supt, Woodstock (Vt.) and a graduate of the U of Mass. golf

course supts' school, won the 10th annual Vermont Tournament of Country Club Champions.

Bill Lyons out as supt., Firestone CC, Akron, O., . . . Lyons now at his Lyons Den Par-3 operation and nursery in Canal Fulton, O. . . . John Gaughanbaugh, supt. of San Diego CC, already has the great old course about ready for the USGA Women's National Open that will be played in June, 1964 . . . This is the first time the event goes to the West Coast . . . San Diego was established in 198.

North Lake Tahoe (Calif) Pro-Am, played in early Sept., was won by Al Mengert with a 194 . . . It was played over three courses . . . In the opening round, Larry Mancour shot 10 birdies and eight pars on the Tahoe City course for a 58 . . . When Mengert played it on the third day he had a 59 which enabled him to make up seven strokes and beat Mancour by three . . . Myrtle Beach, S.C. C of C says Grand Strand has more annual sunshine hours than any section of the Atlantic Coast . . . That's why golf is played there the year around . . . Bermuda GA tourney season starts Nov. 19 with playing

(Continued on page 146)



TROUBLE FREE!
RENTAL CART SERVICE

We furnish you all you need on rental share basis. No investment for you! We deliver and service carts regularly and keep them in good repair — FREE. Clubs not held responsible for damages, theft or breakage.

CADDY-ROLL RENTAL SERVICE
 Three Rivers, Michigan

DIXIE CRAFT TRAILERS-



write: **J. B. JOHNSTON INDUSTRIES**

TAKE YOUR GOLF CAR WHERE YOU NEED IT!

Why leave your Golf Car at the club? Take it with you and enjoy it more. DIXIE CRAFT GOLF CAR TRAILERS enable you to take your golf car with you on weekends, vacations and business trips. Drive right on. In less than five minutes you are loaded and ready to go. Tows perfectly at any speed.

Dealerships available.

- DEPARTMENT C
- Box 351; Eupora, Mississippi

Grau's Roundup

(Continued from page 76)

"Do I have a promising young man who deserves to be trained for the profession?" We need not only to train our own replacements, but to provide for the hundreds of new openings.

Change of Green Chairman

The practice of changing the green chairman each year is one that effectively blocks the development of a program of maintenance that has continuity. It is distressing to talk to supts. who are unable to decide on maintenance matters of vital importance because a new chairman is about to be installed. The retiring chairman refuses to okay a program for fear he might interfere with the incoming chairman. The fear expressed most often is that the new man will institute unwarranted changes based on whims and personal desires.

John Henry at Brook Hollow in Dallas is happy with his setup of a permanent committee with rotating chairmen. He

never needs to worry about the new chairman changing his program because the entire committee (for men, usually) has approved the continuing program.

It is not considered good management to change the staff of a going business each year. We wonder why it is done on golf courses.

Zoysia on the Move

Heavy losses of U-3 bermuda in fairways have caused many supts to look to zoysia, especially where soils are tight or shade is heavy. There are more zoysia tees than ever before and more nurseries are being established for plugging, sprigging and sodding around traps, in fairways and on tees. Meyer is the strain most widely used because it is available and the texture is wholly acceptable.

Zoysia management often leaves much to be desired. When it is cut too high and thatch is allowed to develop, it is unacceptable to golfers. Best zoysia treatment includes close mowing ($\frac{1}{2}$ inch to $\frac{3}{4}$ inch), minimum irrigation (only when needed), removal of clippings, occasional

EVERYWHERE
EAST
OF THE MISSISSIPPI

THIS HAPPY
GOLFER MEANS
COMPLETE

GOLF COURSE
CONSTRUCTION



ONE OF THE FASTEST GROWING
COMPANIES OF ITS KIND IN AMERICA

ONE SOURCE OF SUPPLY
DESIGN • CONSTRUCTION • ALL SUPPLIES

COLONIAL GARDENS INC.

708 GREENE STREET - - MARIETTA, OHIO
PHONE: 373-2188 AREA CODE 614

JOSEPH S. FINGER
GOLF COURSE ARCHITECT
CONSULTING-ENGINEER

Design - Construction
Rebuilding - Site Planning
Clubhouse Design Assistance

6218 Westheimer — Office E,
Houston 27, Texas

FRANCIS J. DUANE
Golf Course Architect

735 Port Washington Boulevard
Port Washington, L. I., N. Y.

516 — PORT WASHINGTON 7-7851

thatching, and once-a-year fertilization. New strains of zoysia still need to be evaluated under play (Midwest). Some "unknowns" are looking very good at Penn State.

When Grass Wouldn't Grow

The spring of '63 was cold and rugged. Complaints from far and near were heard that, "the grass won't grow". This has been heard before and it is a serious thing.

All research data are not at hand concerning one set of experiments at Black Mountain, N. C., but we hope that Dr. W. R. Gilbert of N. C. State College, Raleigh, may have them available soon. The tests involved several bentgrasses which were treated with three fertilizer materials that are widely used. The same conditions which caused grass "not to grow" prevailed at Ross Taylor's course in spring '63 where Dr. Gilbert located the experiments.

All during the heavy winter it was apparent that one of the three materials maintained better color, life and vigor in

all of the bents. When spring came, this one material caused the bents to grow well in spite of the cold. The dormant condition of the grass persisted for several weeks with two of the fertilizer materials but, with warm weather in May and June, they, too, finally started to induce growth.

Since the report has not been published all we can do here is to indicate that there are some factors of slow spring growth that have not been answered satisfactorily. The conclusiveness of the Black Mountain tests is indicated by the fact that all four replications essentially were identical.

Not on New Greens

Inspection of new greens reveals an occasional "stinker". Literally, these are the ones that have been built with manure (steer) as part of the organic matter. So far, the only conclusion is that manure does a far better job growing corn. The rapid breakdown of this material tends to release nutrients at such speed and in such quantity that the grass grows too rapidly and is virtually destroyed by disease.

DAVID W. KENT & CO.
GOLF COURSE ARCHITECTS

Designers, Site Engineers, Builders,
Maintenance Supervisors
for over 40 years

Consultant Services Available to Established
Golf Courses.

8535 Melvin Ave.
NORTHIDGE, CALIF.

Dickens 4-6020

Dickens 5-2788



ROBERT BRUCE HARRIS
Golf Course Architect

MEMBER AMERICAN SOCIETY OF GOLF COURSE ARCHITECTS

645 N. MICHIGAN AVENUE CHICAGO 11 • ILL.
Whitehall 4-6530



RALPH PLUMMER

GOLF COURSE ARCHITECT

*Member, American Society
of Golf Course Architects*

6455 Woodstock Road • Fort Worth 16, Texas
Pershing 8-4215

Fore-Par Reports Big Demand for Personalized Flags, Markers

According to Fore-Par Mfg. Co., (PO Box 31) Laguna Beach, Calif., there has been a big increase in demand in recent months for personalized tee markers, plaques and flags.



Many of these have come from new courses that want to start out with a distinctive look. Fore Par's production process makes it possible to have insignias, monograms, etc., permanently inlaid or imprinted on the items

able to have insignias, monograms, etc., permanently inlaid or imprinted on the items

Eaton to Market Shoe Made of DuPont Material

Charles A. Eaton Co., Brockton, Mass., maker of the Etonic golf shoe, will soon offer a shoe with uppers made of DuPont's new product, Corfam polymeric shoe material. Corfam is said to be fully breathable and is practically impervious to all kinds of weather. After drying out, the material won't stiffen or crack. Lightness of weight and great flexibility also are claimed

for golf shoes made of this material. When the Corfam shoes are marketed they will be available in grain and smooth surfaces and in brown and black.

Jato and Walker Divide Car Manufacturing Operation

The car manufacturing operation of the Walker Manufacturing Co., Fowler, Kans., is being divided between the two firms. Jato Manufacturing, Inc., Salina, Kans., will produce and market the Executive golf car, formerly made by the Walker firm. Walker Manufacturing will continue to manufacture and market the Walker Power-Truck. Both vehicles are gas powered. The manufacturing plant is located in Salina. Ralph Kuhn is vp and general manager of Jato and Paul Swigger is plant and general service manager. Frank Casey, Paul Hainke, Johnny Bozart and Art Cummings, sales reps formerly with Walker, will be associated with the new firm and will continue to represent Walker Manufacturing Co. Both Jato and Walker emphasize that the two companies will work closely in the future in both production and sales altho they are separate corporations.

Classified Ads • P140

William F. Gordon

and

David W. Gordon

Golf Course Architects

Doylestown, Pennsylvania

Fillmore 8-4243

American Society of Golf Course Architects

ROBERT TRENT JONES

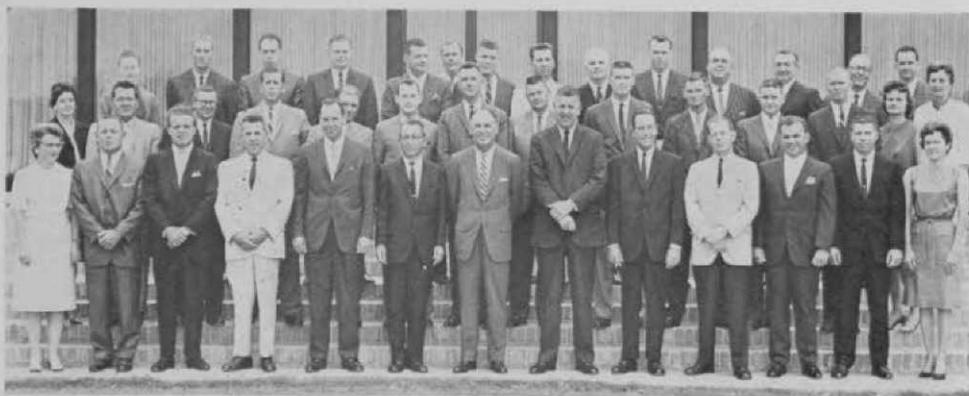
*Member
American Society of Golf Course Architects*

*Golf Course
Architect*

20 Vesey Street

Tel: Beckman 3-1023

NEW YORK, N. Y.



Hogan Firm Holds Largest Sales Meeting

The largest sales meeting in company history recently was conducted by AMF—Ben Hogan Co. in Ft. Worth to preview the 1964 Hogan line of equipment and accessories. It was conducted by Ben Hogan, president, Jack Blades, vp and general manager, and Lyne Price, sales vp. Special guest at the two-day conclave was H. Mizutani, pres. of the International Sports Corp. of Tokyo, Hogan distributor in Japan. Other guests included Richard J. Sargent, AMF vp; Matthew Stolorz, AMF International vp; Clark Gallows, AMF International export sales manager; William N. McDonald, AMF public relations director; Carl Becker, Grandoe Glove Corp.; J. R. Burton, Jr., Burton Mfg. Co.; H. F. Waltz, Hass-Jordan Co.; George McCarthy, U. S. Rubber Co.; Gurdon Leslie, True Temper Corp.; and Jim Noonan of Jim Noonan Co.



At the PGA Golf Equipment meeting were (Front row, l to r) Dan Willey, Jack Slater, Richard Bergman, Robert Berns, Gene Freund, Anthony Marchionne, John Baduini and Bill Hoke. (Second Row) Steve Stoetzel, Harry Paylor, Joe Blanton, Jim Haynie, Bob Bonamy, Robert F. Smith, E. P. Rankin, Harley Greenamyre, Al Raymond, Terry King, Art Longtin and Ev Stuart. Third Row: (Standing) Neal Bergman, Gordon Ramsey, Wally Ulrich, John Caulkins, Gene Workun, Ronnie Stevens, Tim O'Brien, Bob Whitaker, Bob Riddell, Ray Bassler, Jim Cahill, George Rice, Bill Rahmes, Frank Mahoney, John Porter, Jim Longtin, Mike Foegen, Jim Culver, Bill Nugent and Carl Becker.

Smith Predicts Glowing Future for PGA Line

A Portion of the combined executive and sales force of PGA Golf Equipment Co., 8350 N. Lehigh ave., Morton Grove, Ill., recently held its annual sales meeting at the Hyatt House, Chicago. The three-day session was highlighted by the introduction of a new line of clubs, bags, balls and sundries. Robert F. Smith, president, predicted increased sales for the complete line and told of the great strides that have been made in the last year in the setting up of production facilities. Ed Rankin, executive assistant to the president, presented the golf club line and Bob Bonamy, sales manager, was in charge of the meeting. On the last day of the gathering, sales reps and executives toured the PGA's Morton Grove headquarters and attended a banquet.

(Left) Gene Freund, PGA golf plant manager, shows new alligator kangaroo leather golf bag with matching head covers, carry-all and shag bag. PGA will have 32 re-designed bags in its 1964 line.

