



THE BEST BALL FOR CHRISTMAS PROFIT

Feature Titleist this Christmas:

The leader in pro shop sales...the easiest ball to sell Unmatched service on personalizing and delivery Complete protection against "outside" competition Feature Acushnet gift cases—wonderful gifts in themselves. No charge for the gift boxes or for personalizing* (dozens only and a limit of eighteen letters and spaces), and as usual all mail order sales are credited to a professional. Send in your orders right now, and make more money this Christmas season. Acushnet Process Sales Company, New Bedford, Mass.

**Sorry, no personalizing on half-dozens.*

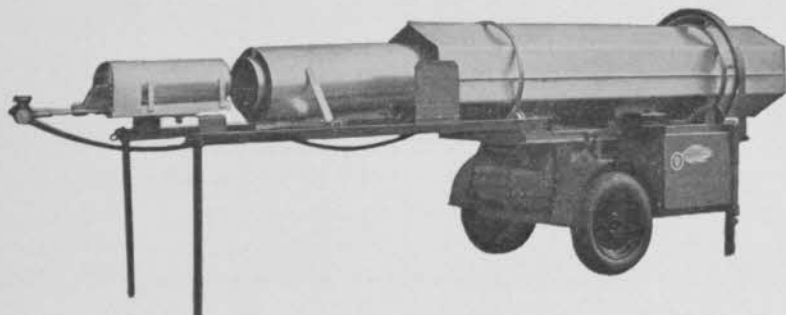
ACUSHNET GOLF BALLS

SOLD THE WORLD OVER THRU GOLF COURSE PRO SHOPS ONLY



TRADEMARK

For Best Turf: pasteurize your top dressing mixtures



with a Tarco "Flash Flame" Soil Pasteurizer. Kills weed seeds and harmful bacteria with controlled heat.

Portable. Set up anywhere and start in five minutes. Treats 2 to 4 cu. yds. per hour. The Safer, More Convenient and Faster Method — tested and used by turf experts.

For complete details — about the machine or the method — see your Tarco Dealer or write to us.

TARRANT MFG., CO.

98 JUMEL PLACE, SARATOGA SPRINGS, N. Y.

Mrs. Leila Robertson Marks First of Girl Caddies

Several Scotch immigrants have been called "the father of American golf." "The mother of American golf" was Mrs. Leila Robertson Marks, 30 Linden St., Lakewood, N.J. Mrs. Marks is mother of Art Marks, pro at Rock Spring CC, West Orange, N.J.

She caddied for Willie Norton, who played in the first USGA National Open championship, in 1895; not when Willie played in the Open at Newport (R.I.) GC but at Lakewood (N. J.) GC where he was pro. The little Robertson girl, living nearby, was the best of the girl caddies at Lakewood.

Willie Dunn laid out the Lakewood course in 1892. Dunn had been brought there by Jasper Lynch and Robert Bage Kerr of New York City. He came dressed in his red coat and was chased off the pasture that later became the course by a bull that didn't like golf.

Generally the girls caddied for women players. The little Robertson girl took to the game naturally and outranked many of the boy caddies. Some oldtimers around Lakewood say Mrs. Marks caddied for

Horace Rawlins, the first Open champion of the U.S. when he came there to play, but the still sprightly lady says she doesn't remember Rawlins.

She does recall: "We had to pick numbers and take our turns in getting out. They used to bring the players from the hotels in Lakewood in horse-drawn stage coaches. All the girls in my neighborhood were very fond of playing golf. We used to cut our clubs from the woods and use the fields as our course. That was a long time ago."

Lakewood later became the home of a well known golfer who never won any championships — John D. Rockefeller, Sr.

"I am proud of Art, my son who became a pro, and of course of my other sons, too," says Mrs. Marks. "They like to play golf as a sport but Art is the only one who took up golf as a business."

The second Chicago golf show and exposition, sponsored by the Illinois PGA section, will be held Apr. 15-17, 1963 in the Hilton Exposition Hall. The show is being lengthened from one to three days because of the success of last year's venture.



In only five years this perfect, uniform hedge grew to ten feet from 2 to 3 foot Tallhedge plants 30 inches apart. Never trimmed, except to even up the top at picture time, the hedge maintains a naturally neat appearance.

Now Cole's beautiful new Tallhedge

Rhamnus frangula columnaris, P.P.1388, Luedy

gives you perfect hedges and screens at low cost

Cole's New Tallhedge is the ideal screen for:

Tees and Greens
Practice Greens
Swimming Pools
Tennis Courts
Adjacent Property
Nearby Traffic
Storage Areas

Tallhedge Price Schedule

1½ to 2 ft.	10 to 29	\$.75 ea.
	30 and up	.65 ea.
2 to 3 ft.	10 to 29	.90 ea.
	30 and up	.80 ea.

Wholesale orders only
Send for our Catalog

NEW BEAUTY. Now, for the first time, Tallhedge, the most beautiful new hedge plant introduced in America in decades, fills a long-standing need for a tall, narrow hedge that always looks freshly trimmed.

DENSE, FAST-GROWING. Tallhedge quickly forms a neat, compact, narrow hedge or screen 12 to 15 feet high, yet can easily be kept as low as 4 feet. Averages 4 feet wide at maturity.

STAYS NEAT. Tallhedge needs practically no care. The hedge illustrated above was never side-trimmed. Note how the dense foliage grows almost from ground level.

VIGOROUS FOLIAGE. Lustrous, heavy, dark green leaves are enhanced by a summer-long succession of attractive berries changing from cream to pink, red and black.

LOW COST. 30-inch spacing is ideal for Tallhedge—takes ¼ to ⅓ as many plants as a privet hedge of equal length at about the same cost per foot. Saves planting cost, too.

EASY MAINTENANCE. Tallhedge is extremely hardy and adaptable—needs no special care. Sides need not be trimmed. Slight shearing at top when young will maintain an even line at any desired height.

THE COLE NURSERY CO.

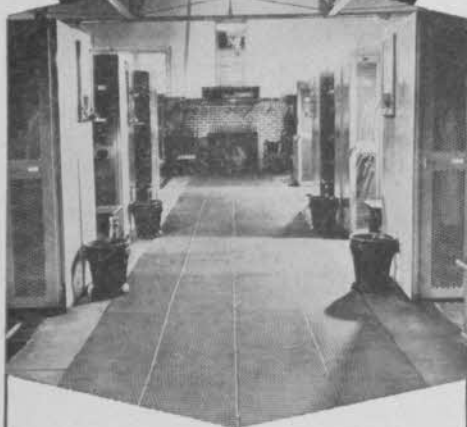
Phone ELmwood 2-3121

HEADQUARTERS: 2000 W. Jackson St., Painesville, Ohio

CIRCLEVILLE DIVISION: Old Route 23, Circleville, Ohio

*Stop
Worrying
About
Accidents*
resulting from slipping

PREVENT THEM
WITH SPIKE-RESISTANT
DO-ALL
Cross Rib
RUNNER MATTING



Ideal for locker rooms, washrooms, lobbies, back of counters, at drinking fountains, and for carpet protection. Affords unequalled resistance to scoring, denting and puncturing. Good scrapeage for dirt removal when used at entrances. Easy to clean. Sides beveled. A variety of colors and widths.

Send for catalog sheets and prices.

AMERICAN MAT
CORPORATION

1802 Adams Street • Toledo 2, Ohio

"America's Largest Specialists in Floor Matting"

Superintendents Did Fine

(Continued from page 24)

and women members while being toughened for the long hitters.

The Aronimink budget is "\$50,000 plus," Elliott says, pointing out that the budget has to be elastic because it is difficult to determine exactly what is a course expense and what is a ground expense.

44 Traps Knocked Out

In getting ready for the PGA championship Aronimink eliminated 44 traps, a few others were lengthened, several tees changed and borders of a lake altered. There was no interruption of play during construction work. Elliott says Baskin planned and accomplished the reconstruction so well that inconvenience and unsightliness of this sort of work were minimized.

In the autumn of 1961, Baskin put Agrico at the rate of 500 lbs. per acre on Aronimink's fairways and tees. In the spring he applied 400 lbs. per acre of Milorganite.

Aronimink's fairways usually are cut at 1/2 in. For the PGA championship the fairways were cut a trifle higher than 1/4 inch.

Baskin applied about 100 lbs. Milorganite to each of his greens early in April and repeated the fertilizing a month later in mid-June. He gives his greens a combination of Tersan and Calo-Clor once a week; maybe twice a week in August or in other hot, humid periods.

His greens normally are cut at 3/16 in. For the PGA tournament the cut was 1/8 in.

Looks Like A Boom

So much golf course building is in prospect that some prominent architects are telling eager potential clients they'll have to wait. City of Westbrook, Me., for example, asked Geoffrey S. Cornish to inspect and report on site for municipal course but Cornish declined. "Too busy," he said. Addition of nine holes to existing nine or 18-hole courses is a feature of the current course construction activity. Many of these additions being built by supts. who already are working long hours in course management. Some of the additional nines are being built for less money per hole than the original courses.



CREATIVE RESEARCH • QUALITY PRODUCTS • PROFESSIONAL SERVICE



WATERLOGGED GREENS are the golfer's Waterloo

With Wyandotte TURFACE® your greens will drain quickly . . . because TURFACE aerates soil and minimizes compaction. TURFACE is an inorganic soil conditioner that won't decompose. It breaks up soil *mechanically*, providing drainage that will last season after season, winter and summer. Hot summer burn-out problems are also checked by TURFACE, because it absorbs and holds moisture at root level. Order today from your supplier.

Wyandotte Chemicals

J. B. FORD DIVISION

WYANDOTTE, MICHIGAN • LOS NIETOS, CALIFORNIA • ATLANTA, GEORGIA

Golf

Christmas Cards

IN VIBRANT COLORS . . .

ALSO AVAILABLE ARE BOWLING, HUNTING, FISHING AND SKIING . .

OFFERED TO
DEALERS OF
GOLF OUTLETS

write for more information and FREE SAMPLE

To: **PSYCHO GREETINGS, Box 5684**
Sherman Oaks, Calif.



Move PGA Winter Events to Port St. Lucie Club

The three major winter tournaments of the PGA will be played at Port St. Lucie (Fla.) CC in 1963. Originally, it had been planned to hold the events at the new PGA National GC, which is now being built in Palm Beach Gardens, Fla. However, it now appears that the two courses under construction there will not be in play in time for the winter tourneys. In addition, other facilities necessary for tournament operation probably won't be completed on schedule.

The PGA Seniors' Teacher Trophy Championship, originally scheduled for Feb. 21-24, will be played at Port St. Lucie, Jan. 31-Feb. 3. The PGA National GC championship will be held Jan. 17-20 and the Quarter Century event is to be played Jan. 23-24.

Port St. Lucie is located 35 miles north of the new Palm Beach Gardens club in the vicinity of Ft. Pierce. St. Lucie has two 18 hole courses, one more than 7,000 yards long and the other, 6,650. They were designed by Mark Mahannah. The club has a \$450,000 clubhouse and there is said to be ample housing in the area.

Ladies PGA Has 11 Tourneys on Fall Schedule

Women professionals who play the Ladies PGA tour this fall will compete for a total of \$122,500 in prizes. Included among the 11 tourneys which the women will play are the LPGA Championship and the Haig & Haig Mixed Foursome. Four of the regularly scheduled events offer \$10,000 or more in prize money.

Five new tournaments have been added to the women's fall calendar. They are the Eugene (Ore.), Visalia (Calif.), Phoenix Thunderbird, Carlsbad Cavern City and Houston Opens. Holdover events include the Spokane, Sacramento Valley, San Diego and San Antonio Civitan Opens in addition to the LPGA Championship and Haig & Haig. Five pro-ams also are on the fall schedule.

30 For The Season

Before the 1962 season is over, the women will have played 30 official and four unofficial tournaments as compared to a total of 24 events in 1961. Prize money for the year will run to nearly \$275,000 or about \$90,000 more than in 1961.

The New ROSEMAN Hi-Speed-Reel MARK IV

HOLLOW-ROLLER DRIVE GANG MOWER



SMOOTHER TURF • IMPROVED APPEARANCE • REDUCE COSTS • EARLY MORNING MOWING

The ultimate in gang mowing equipment — and perfection in mowing is now yours in the new Roseman Hi-Speed-Reel Mark IV Hollow Roller Drive gang mower.

The Hi-Speed-Reel of the Roseman Mark IV not only eliminates ribbed or washboard appearance but also cuts grass clippings into shorter lengths. With the new Roseman design these pulverized clippings are dispersed uniformly and evenly without windrowing and regardless of climatic conditions. Bunchings, droppings of clumps of grass and messy fairways are eliminated.

Early morning dew, watered fairways, heavy rainfalls and wet areas, no longer are a problem. Whatever the grass condition "early morning mowing" is now possible

with the new Roseman Mark IV Hollow Roller Drive Mower. Beautifully cut, neat appearing fairways are the result.

Non-breakable construction, reliability, low upkeep expense, faster mowing speeds, elimination of hand trimming, lower operating costs, improved playing surfaces and greater member satisfaction—all are bonus features of Roseman Hollow Roller Drive Mowers.

Before you take delivery on your next mower be sure and see the Roseman Hi-Speed-Reel Mark IV Hollow Roller Drive gang mower in actual use on your own course.

Buy and use the gang mower that improves turf, cuts costs and outperforms all others, at all hours of the day, in every way.

MAKE YOUR NEXT GANG ROSEMAN

ROSEMAN MOWER CORPORATION
EVANSTON, ILLINOIS, U.S.A.

NATION-WIDE SALES and SERVICE

Write or phone TODAY for descriptive literature, prices and availability

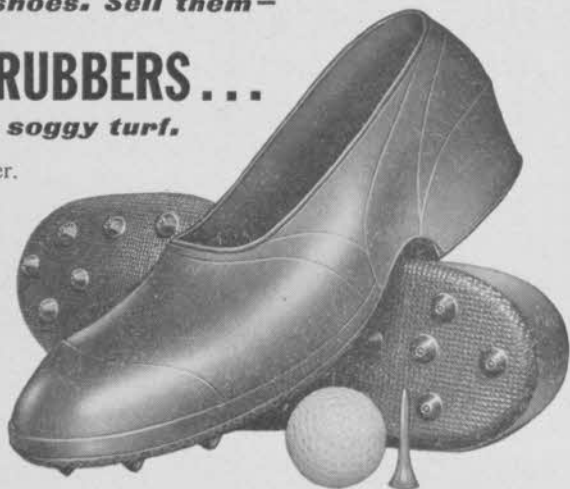


**Don't let your players spoil
expensive golf shoes. Sell them—**

TINGLEY GOLF RUBBERS...

for a firm stance on soggy turf.

Molded one piece in natural rubber.
No plastic or other substitute
is used. Worn over ordinary
street shoes, they are per-
fectly molded rights and lefts
and because they stretch, 4 sizes
provide a comfortable fit over
any type of shoes 6½ to 13.
Can be instantly washed in-
side and out... dry quickly.
Will not cut or mark upper
leather of shoes or roll over
sole edge as plastic often does.



*Suggested retail,
from \$4.25*

TINGLEY
RUBBER CORPORATION

Distributed by A. G. Spalding & Bros., Inc.

SO. PLAINFIELD 26, N.J. EST. 1896

Old Eagles Gather

(Continued from page 42)

a professional assigned to an amateur part-
ner from each division of low, medium and
high handicaps.

Prizes from Entry Fees

Prize money of \$22,000, collected solely
from entry fees, is expected to be up for
grabs. This handsome sum is made pos-
sible in part by the fact that National Sen-
ior officers and directors accept no salary
or expense money for any of their duties.

In addition to all other prizes and a-
wards, all contestants play for daily 18
hole prizes on the basis of low scores.
Awards are made in the pro and amateur
classifications and in all age divisions for
each of the three days of play.

When the 54 hole stroke play ends
Thursday, cash prizes and trophy awards
are presented to all gross and net winners
in a special ceremony at the Indian Wells
Hotel's Diplomat Room, tournament head-
quarters. The low 50 places and ties, play
a final 18 holes for the championship
scheduled the following day at Indian
Wells.

Non-qualifiers, who aren't ready to steal
away, may enter a special 18 hole handi-
cap competition at one of the other two
courses for the president's Trophy.

All contestants are members of the U. S.
National Senior Open golf association. Its
primary purpose is to promote more in-
terest in Senior golf activities in addition
to conducting an annual championship.
Membership in the association is \$25 with
entry fees for the Open running to \$75.
The Seniors president, Joe Mozel, reports
the high entry fee was necessary to in-
crease the prizes and limit the field which
grew from 97 players in 1957 to 532 en-
trants in 1959. Current entries run be-
tween 350 and 400.

Missing from this year's Open scene
will be the late Joe Albi, who as president
of the Spokane Roundtable, provided both
the push and the cash for the First Sen-
iors Open in 1957 at Spokane's Esmer-
alda course. The Roundtable sponsored
the event again in 1958 but was forced to
withdraw when the playing list grew too
large to accommodate play.

A new site had to be selected, and
Palm Springs was voted as best suited.
With no sponsor to provide cash, the Sen-
iors elected Joe Mozel its new leader. A
well-known promoter and organizer who
was one of the association's founders, Mo-
zel is widely recognized in the golf field.
He is professional at Green Hills, Millbrae,
Calif.



It's unanimous... Certain-teed "K&M" is OK! Above (kneeling, l to r) Joe Tagnon, Golf Course Superintendent, Ashbourne Country Club, and Al Crebbs, President, Farm & Golf Course Supply Company; (standing, l to r): Ed Hennessey, Certain-teed Sales Representative and Martin Sharpe, Chairman Greens Committee, Ashbourne Country Club.

“ WE'RE 100% SOLD ON OUR IRRIGATION SYSTEM OF 'K&M' ASBESTOS-CEMENT PIPE! ”

Ashbourne Country Club in suburban Philadelphia is among the latest of the fine clubs that are headed for big savings and finer irrigation with Certain-teed "K&M" Asbestos-Cement Irrigation Pipe.

Golf Course Superintendent, Joe Tagnon reports, "We're impressed at how smoothly the whole job was installed." And Martin Sharpe, Chairman of the Greens Committee adds, "The grounds weren't scarred up with a lot of heavy equipment and we have tremendous capacity of water from a new system that is in the ground to stay!" That's true! With "K&M" Asbestos-Cement Irrigation Pipe you can forget rusting, flaking or clogging. This pipe is top quality asbestos cement!

Certain-teed "K&M" Asbestos-Cement Pipe is easily handled . . . and quickly joined with the exclusive "K&M" FLUID-TITE® Coupling that is life-time tight while allowing a 5° deflection at each joint. Lines can be readily shunted around trees, traps and other obstacles. The higher the water pressure the

tighter the coupling, which also shrugs off the most obstinate roots.

Let us send full details. And be sure to ask your contractor's opinion, too, on savings and performance of Certain-teed "K&M" Asbestos-Cement Irrigation Pipe. Certain-teed Products Corporation, Dept. ACP, Ardmore, Pa.



ASBESTOS-CEMENT IRRIGATION PIPE

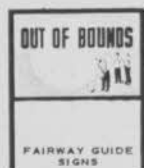
Course Master Golf Line



GOLF SIGNS AND FLAGS



TRAFFIC SIGNS



FAIRWAY GUIDE SIGNS



GRAPHIC-T-SIGNS



CUSTOM CLUB SIGNS



T-TO-GREEN FLAGS

A completely new line of Signs and Flags designed to give your Course a modern flare - to guide players from T-to-Green without confusion - to keep players advised of rules, directions and changes on the Course - to provide for safety and the handling of traffic flow and parking - to reduce maintenance costs.

DEALERSHIPS AVAILABLE - WRITE TO:

EASTERN METAL of ELMIRA, Inc.

Manufacturers of TRAFFIC and UTILITY SIGNS

190 GRAND CENTRAL AVE., ELMIRA HEIGHTS, N.Y.



"The Seniors do a first-class job", Mozel says. "We have the experience and the most free time." With a quick smile, Mozel adds, "We also have a little money."

In addition to the customary tours and fashion shows, the ladies who accompany their husbands to the Open have their own 36-hole competition at the new Billy Bell designed Canyon Country Club. There are many social doings, too, with organized cocktail parties at the hotels following each day's play.

Direction of the Seniors is in the hands of a 15 man Board of governors whose names must have been taken from the pages of golf's Who's Who. Amateur directors include La Canada's Johnny Dawson, always a top-finisher in the championship; Portland department store magnate, Bob Hudson; former Southern California GA president, Tommy McMahan; and the famous "golfing congressman", Jack Westland, former Amateur champion.

The pro roster is equally impressive with Oceanside's Wilson Atkins, Palm Springs' Jimmy Hines, and the first U. S. Seniors president, Broadmoor's George

Howard, on the board with Mozel, Dutra, Runyan, Sarazen and Metz.

Gift Wrapping

(Continued from page 46)

416 feet, enough to wrap the 250 presents. The roll should be a basic red, green and gold Christmas design and mounted on a 30-inch paper cutter costing \$6.30.

For banding ribbon, two or three bolts in red, gold and green, each containing 100 yards and costing about \$2.25, are recommended. These should be one red and one gold and mounted on a bolt holder which sells for \$1. The 3/4 inch or 1 1/4 inch widths work best.

Pre-made bows come in a variety of sizes and in colors to match the banding ribbon. They are packed 120 of a size and color to a carton and sell for \$6 per carton, or a total of \$12 for enough to accompany the 250 packages. Figured on the basis of 250 packages the cost of materials will average about 15 cents for each package. This includes the spool holder and paper cutter.