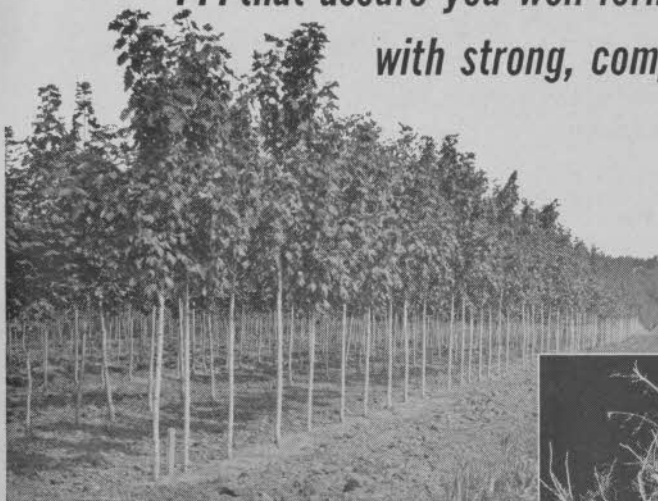


Specialized Cole Nursery Methods

... that assure you well-formed, healthy trees with strong, compact root systems



WIDE SPACING in and between nursery rows gives these Original Bowhall Red Maples plenty of room to develop top and root growth without crowding. Excellent for street planting in limited space, they can also be grown low-branched as lawn specimens.

The quality of the trees and nursery stock you buy depends on how, where and by whom they were grown

Cole uses advanced, cost-saving, mechanized methods of planting, fertilizing, irrigating, cultivating, pruning, digging and packing to produce and deliver highest quality landscape material with the strongest root systems grown.

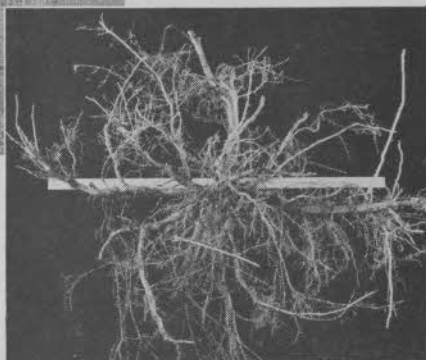
Cole's 1200-acre nurseries are the largest in Ohio. Ideal soil and climate conditions make this one of the nation's finest natural growing areas.

Cole trees and nursery stock are grown by experts who specialize in the improvement of standard varieties and the development of new varieties. If you want modern trees that live and flourish write for our catalog or ask for a special quotation. We accept only wholesale orders.

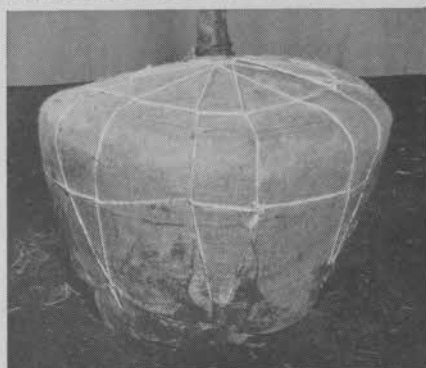
THE COLE NURSERY CO.

Phone Elmwood 2-3121

HEADQUARTERS: 2000 W. Jackson St., Painesville, Ohio
CIRCLEVILLE DIVISION: Old Route 23, Circleville, Ohio

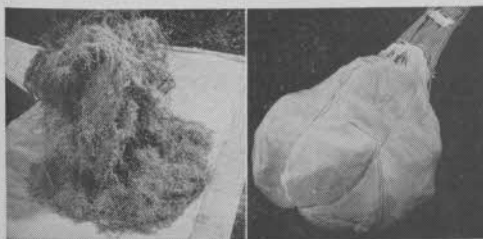


HEALTHY, COMPACT ROOT SYSTEM of this root-pruned Cole tree will get it off to a good start in your planting. Yardstick in this "worm's-eye view" shows typical size of roots on a 1½" caliper Green Ash.



AMPLE BALL, over 30" diameter, on this 2½ to 3" caliper Cole Sunburst Locust (P.P.1313) will protect it from nursery to planting. Note careful covering and lacing.

CAREFUL PACKING assures delivery of these Cole Imperial Locusts (P.P. 1605) in good condition. Roots are protected by an ample covering of well-dampened moss. Polyethylene-coated and heavy crinkled Kraft papers retain moisture and prevent injury. Cloth covering and careful tying avoid tearing of package.



Nelson recommended a 1½-inch pipe to the sod cup at the center of the green. If varying patterns, such as higher concentration at the perimeter is desired, he said, these are made possible by simple adjustments in spring tensions and nozzle sizes.

Kenline Named Assistant P. R. Man by Foundation

John Kenline has been named staff assistant in charge of public relations for the National Golf Foundation. His appointment was made in February, according to Rex McMorris, executive vp of the Foundation.

Kenline edits a monthly news letter, writes press releases, maintains a library of planning information and is revising Foundation publications. He formerly was an assistant editor and ad copywriter with Abbott Laboratories, Chicago, where he wrote direct mail and advertising copy for that firm's international ad department. Before this he was employed by a Chicago advertising firm.

Kenline is a graduate of Occidental College in Los Angeles where he was a four-letter winner in golf. He is a frequent competitor in amateur tournaments held in the Chicago area.

Litter Bags on Bag Carts

Courses in smaller communities are looking better in the past few years because of housekeeping campaigns. A sidelight on cleanup appeared recently in Emil Roewert's "From Tee to Green" column in the Shenandoah (Ia.) Sentinel:

"Cecil Carlson of Essex was the donor of those litter-bags which were distributed last Sunday. While playing in the husband-wife tournament we actually had to hunt paper to pick up. The preceding foursome had really done a job of making use of their litter-bags. Hook one on your cart and it won't take much effort to keep your golf course looking much better.

Classified Ads • 177

Services Supplied by the Producers of MILORGANITE

You probably have used at least *one* of the Free services provided by the Producers of MILORGANITE — *The Natural Organic Fertilizer*. In order that you may be familiar with *all* of these Free services, here is a complete list of them:

- **Bulletins on Turf Culture** — No. 1 "Role of Lime", No. 2 "Better Bent Greens", No. 3 "Better Northern Fairways", No. 4 "Fertilization Handbook".
- **On-The-Spot Visits** — Personal consultation on your turf problems.
- **Soil Testing** — by the MIL-ORGANITE laboratory. Ask your distributor for Soil Sampling Bags.
- **Attendance and Participation** in local, regional and national Turf Conferences.
- **Field Testing** — Nationwide — of materials and methods to improve your turf.
- **Turf Service Bureau** — Staffed by MILORGANITE Agronomists to answer your questions on Turf Culture.

If you want to know more about these services, or the name and address of your Milorganite Distributor, write . . .

THE SEWERAGE COMMISSION
MILWAUKEE 1, WISCONSIN



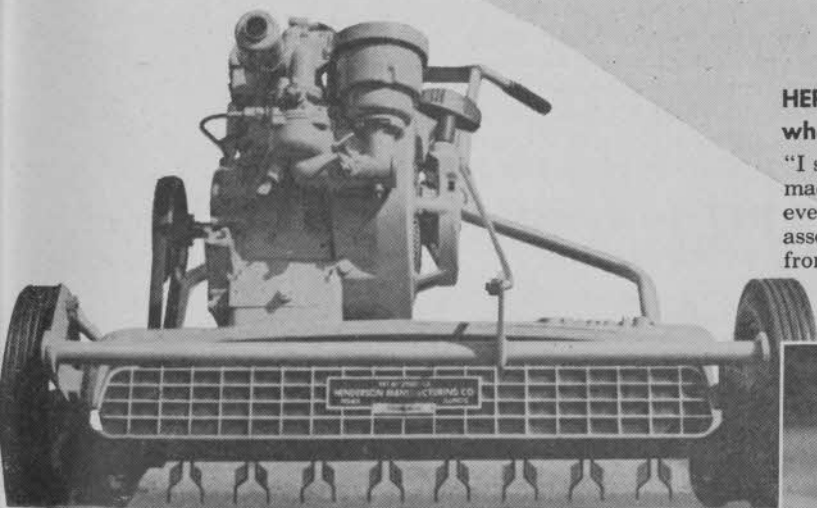
GOLF CLUBS
USE MORE

MILORGANITE

THAN ANY
OTHER FERTILIZER

For deep-colored, lively,
grainless greens that let a putt
run true... *Vertical Cut* regularly
with the low-cost, economical

HENDERSON THIN-CUT



Here's a top quality vertical cutting machine — the Henderson Contour Thin-Cut Model 18T— priced so low that it's within the budget of every golf club.

It's both amazingly low in cost and inexpensive to operate. It has become widely used by greens-keepers all over the country because it saves time, money, and back-breaking labor while keeping greens and tees in tip-top shape. You can pay much more but you can't buy better. For the complete story, write . . .

HERE'S A HAPPY USER
who says,

"I sure am sold on this new machine and I am sure that every-member of our association will benefit from its use . . ."



GEORGE RAMSDEN
Past President
The Northeastern Golf Course
Superintendents Association

HENDERSON MANUFACTURING COMPANY
FISHER, ILLINOIS

Swinging Around Golf

(Continued from page 28)

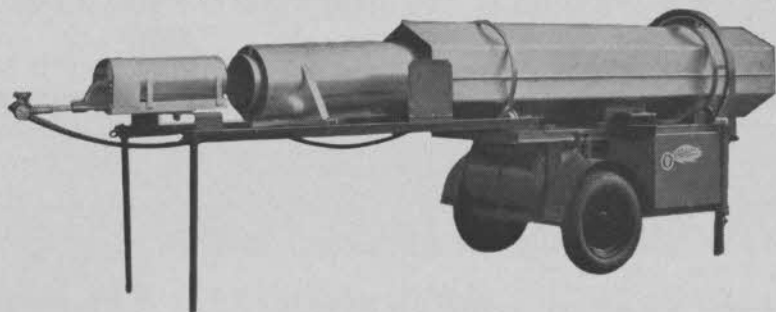
MGA . . . Chicago Dist. GA has designated Friday, April 6 as CDGA Day at the Masters . . . This will be the fourth year the association has sponsored the Chicago to August flight . . . Johnny Linden, the onetime Yankee pitcher-outfielder, recently won a tournament at Antelope Valley CC, Palmdale, Calif., with a 74.

Oregon State University held a turf conference Feb. 6-7 in Corvallis . . . Norman Goetze of the University staff was in charge of arrangements . . . Controversy over the public links qualifying setup, that had raged in Hawaii in recent months, was settled late in January when factions representing the USGA public links committee and Hawaiian PLGA got together . . . William P. Bell, Pasadena architect, is designing 18 holes for group that is putting in a course at Saticoy, Calif., and is well along with the Pacific Palisades course in Hawaii that he designed . . . Canyon CC, Palm Springs, Calif., another course blueprinted by Bell was officially opened on Jan. 1 . . . Jack

Koennecker is pro at Canyon and Jack Quigley is the club mgr. . . . Jack Blakeslee, veteran Wisconsin pro who reached his peak as a player 35 years ago, died in Jan. in Sheboygan of a head injury suffered in a fall . . . Pat J. Markovich, pro-owner of Richmond (Calif.) GC, recently started his 24th year at that club.

Rolling Hills CC, Wilton, Conn., has more than \$300,000 pledged by members toward the building of a new clubhouse . . . It should be ready by July 4 . . . Building 18-hole course at Lake Toxaway Estate, between Brevard and Cashiers, N. C. . . . Course is located in a large recreation area . . . The 151-acre Deercrest CC in Greenwich, Conn., has been purchased by Mal Deitch and Dr. Joseph Goldstein for about \$2 million . . . They plan to renovate and keep it in operation . . . The new PGA tournament rule that penalizes a player two strokes if he falls a hole behind the group in front was roundly criticized by Jerry Barber, who says it strikes at the older players . . . Frank H. Wilson, former supt. at the Charles River CC, Newton, Mass., and a onetime U. S. Air Force agronomist, died in Feb. in Framingham, Mass., where he

For Best Turf: pasteurize your top dressing mixtures



with a Tarco "Flash Flame" Soil Pasteurizer. Kills weed seeds and harmful bacteria with controlled heat.

Portable. Set up anywhere and start in five minutes. Treats 2 to 4 cu. yds. per hour. The Safer, More Convenient and Faster Method — tested and used by turf experts.

For complete details — about the machine or the method — see your Tarco Dealer or write to us.

TARRANT MFG., CO.

98 JUMEL PLACE, SARATOGA SPRINGS, N. Y.



KEEP GREENS, FAIRWAYS
in Championship Form

with

PMAS

REMEMBER - *There is only ONE*

the original, patented product
of W. A. CLEARY CORPORATION

**CLEARY
PRODUCTS**
for
**BETTER
TURF**

Apply PMAS right now for dual control of BOTH disease and Crabgrass. PMAS has stood the test of time . . . the genuine PMAS has demonstrated its worth, over the years, to the golf course superintendent and is now an established control chemical for BOTH disease and Crabgrass on courses in all parts of the country. Be safe, be sure . . . if PMAS does not appear on the label it is not the genuine PMAS, patented and manufactured by W. A. Cleary Corporation.

SPOTRETE

75% Dry Thiram Fungicide

CADDY

Liquid Cadmium for Turf Disease

METHAR

Lightest concentration of DSMA-Disodium Methylarsonate for Crabgrass and Dallisgrass in both liquid and powder.

PM2,4-D

Phenyl mercury-2, 4-d dichlorophenoxy-acetate for selective weed control.

ALL-WET

makes water "wetter" for better penetration in all turf areas, especially thatched or compacted spots.

THIMER

Fungicide combines Thiram and Organic Mercury in a wettable powder. Treats fungus diseases, like Snow Mold.

AMA2, 4D

Amine Methylarsonate plus 2, 4-D liquid for Dallisgrass and weed control.

AMA

Amine Methylarsonate, liquid, for Crabgrass and Dallisgrass control.

**W. A.
CLEARY**
CORPORATION

New Brunswick, New Jersey
Skokie, Ill. Belleville, Ont., Canada

was living in retirement.

Walla Walla (Wash.) CC to stage a Senior tourney June 7-9 . . . Buck Whetsell has moved from Westbriar CC to the new Tantalum CC, near Washington, D. C., as supt. . . . Needles (Calif.) has signed a contract with William Mason to have first 9 of its many courses started . . . Montour CC, near Coraopolis, Pa., to add second 9 this spring . . . Simi Hills CC, planned for Santa Susana, Calif., to cost about \$1.5 million . . . Jim Brandt, supt. of the Danville CC, is the new pres. of the Illinois Turfgrass Fdn. . . . Bert Rost is vp, Ben Warren, sec. and Oscar Borgmeier, treas.

Guests at the Roney Plaza Hotel in Miami can step out of a terrace dining room onto the first tee of the Hotel's Par 3 . . . The nine greens are copies of famous putting surfaces at courses throughout the world . . . Charles E. Croley of the USGA green section has been transferred from the Southwestern to the Eastern office . . . Jim Kollett, formerly of the Eastern region, has resigned to take a supt's job at a Rhode Island course . . . Officials of the Masters (which will be played Apr. 5-8) have enlarged the inter-

ior press quarters and added a large porch to the press building . . . Four new small towers have been added for photographers and a large field scoreboard is being erected near the 16th green.

Bob Baldock, Fresno, Calif., expects to complete five courses this spring, two of them Par 3s, in the Fresno area . . . He also has drawn up plans and expects to complete 18-hole courses at these spots this year: Tustin, El Segundo, Oakland, Concord and Twenty Nine Palms, all in Calif.; and Boise, Ida. . . . Bob also will build or rebuild courses in Hawaii and the Philippines . . . The average 72-hole score for all players who have participated in the Tournament of Champions since it was started nine years ago is 287.25 . . . There have been 57,449 shots taken by the competitors in the tourney's 9-year history . . . Westwood CC, near Woodbury, N. J., to be completed by July . . . It's an 18-hole layout that Horace W. Smith designed for William Raynor . . . Smith also is supervising its construction.

Joe Brown, who did so well in the PGA Senior tourney in Feb., went to Dunedin with a citation as "Iowa's pro of 1961" in

Longest "DRIVER" in your golf cars



Trojan Mileage Master Golf Car batteries are of special design for deep cycling and built for rugged service... you get:

1. More months of service
2. More rounds of golf
3. Special "Quick Water" vent caps
4. Service time reduced 75%
5. Lowest maintenance and monthly cost



TROJAN BUILT THE FIRST GOLF CAR BATTERIES.

"MILEAGE MASTER" features "QUICK-WATER" quarter turn vent caps

TROJAN GOLF CAR BATTERIES

TROJAN BATTERY CO., 724 E. 61st, LOS ANGELES 1, CALIFORNIA

IN
AUTOMATIC IRRIGATION
IT'S



Larchmont

the COMPLETELY VALVELESS
AUTOMATIC IRRIGATOR



THE DECISION WITHOUT A DOUBT

Completely covered by
U. S. Pat. #2989247

In recent years many a green's chairman was faced with the problem of making a decision on some one of 4 different makes of turf sprinkler systems, they were all so much alike that the chairman wondered how he could make a wise choice for his club.

But not today — with Larchmont there is no trace of doubt in his mind. For Larchmont is an automatic sprinkler that has no equal.

????

What automatic sprinkler can operate with no valves buried in the ground, can be serviced above ground, has positive action, has special fiber seals that can be adjusted on the course?

With its great beauty, and classic design it will catch the eye of everyone that visits your course. You will find that Larchmont is by far the wisest investment for your course.

Here's How You Save

The initial purchase price is moderate . . . its performance is fantastic . . . its maintenance and upkeep costs are low, low, and your labor savings are a big factor.

15 Minutes with your Larchmont distributor is all you will need to assure you that you have made a choice without a doubt.

Write for name of nearest distributor.

LARCHMONT ENGINEERING
LEXINGTON, MASS. • Tel. VOLunteer 2-2550

his pocket . . . It was awarded by the Iowa GA . . . Superintendent of the year (1961) is Norm Westfall of Wakonda in Des Moines . . . Brown is at the Des Moines G & CC . . . Westfall's son and two of his sons-in-law are supts. Women's Southern GA will hold its 47th amateur tourney at the CC of Richmond, Va., May 21-26 . . . We may be wrong but it's our impression that far more pros than supts. write articles for their club magazines . . . Charles Whitaker of Diablo CC is pres. of the Northern Calif. GCSA for 1962 . . . Other officers are Paul Paulsen, San Francisco GC, vp, and Cliff A. Wagner, Del Rio G & CC, Modesto, sec-treas.

Chicago area unit of the UVS Swing Club held its annual meeting recently in the Ambassador Hotel . . . The Chicago group has 5,000 members and does much to promote rehabilitation at VA Hospitals, partly through golf . . . 1962 Western Junior will be played at the University of Minnesota GC, Minneapolis, Aug. 7-11 . . . Phil Marston, who won it in 1961, won't be eligible to defend his title . . . Northern California PGA medal championship is to be played Apr. 9 and

Watch for This

Every golf club in the U.S. is being mailed a form card on which space is provided for names of operating personnel entitled to receive GOLFDOM. Unless this card is filled out and returned, we cannot continue mailing GOLFDOM to these people.

If your club failed to receive this card or misplaced it — use the form on page 180. Our circulation auditing association requires that the list of persons to whom GOLFDOM is mailed be kept up to date. Without this updated information we are instructed to stop mailing the magazine to old names on our list. To make certain that your 1962 officials and operating heads receive GOLFDOM, please fill in the form and mail it today!

the Open Championship will be started four days later . . . Berry Haug is the new club mgr. at Blue Hills CC in Kansas City . . . This club, incidentally, recently decided to trade its present location for another in the K.C. area . . . Tom Sams



The SKINNER IRRIGATION COMPANY

415 East Canal Street, Troy, Ohio

Turf Experts
know...

SKINNER
irrigation
equipment
IS BEST!

Follow the leaders to Skinner. Quality equipment . . . for every watering requirement . . . individual units or complete systems. Uniform coverage . . . dependable performance . . . long life.

Write today for details.

Over 60 years' experience manufacturing irrigation equipment

Ransomes CERTES

*mow greens at Royal & Ancient Golf Club
St. Andrews, Scotland*



**Only the finest mower is good enough for the greens
on the most famous Golf Club in the world.**

Ransomes Certes is a precision-built 16" machine. It has a ten-knife cutting cylinder and a very thin bottom blade so that it produces the closest work and leaves a finish like velvet.

Any groundsman with fine golf greens, bowling greens or tennis courts to look after should use Ransomes Certes. There's nothing to beat it anywhere.

Ransomes MOW THE WORLD



RANSOMES SIMS & JEFFERIES LTD. IPSWICH, ENGLAND

is the new pres. of the Kentuckiana GCSA; Bob Hinkle is vp; and Charley Cunningham, sec.-treas. . . . Morgan Boggs bowed out of the latter job after holding it for nine years.

Mrs. Mary Cromb, 85, died Feb. 15 at Monifieth, Scotland, after a long illness . . . She is survived by her daughter Stella Cromb of Monifieth, and sons, Marty and Jimmy . . . Marty is pro at Toledo (O.) CC and former pres., PGA Seniors, and Jimmy is pro at Tarpon Springs (Fla.) CC . . . They were at the PGA Seniors when informed of their mother's death . . . Marty flew to Scotland . . . Their father was on the staff of the Dundee Advertiser and wrote golf news for the World of Golf, a Scotch magazine of some years ago.

PGA members who have been complaining about being kept in the dark about the deal for the PGA course, clubhouse and office building at West Palm Beach, Fla., are promised official information soon . . . Negotiations and planning hadn't been completed at the time of the PGA Seniors championship at Dunedin but construction at West Palm

Beach of the two 18s to plans of Dick Wilson was well on its way . . . Courses will be playable in December.

Reliable sources estimate that the PGA deal at West Palm Beach is, on paper, about a \$2,000,000 enterprise . . . The PGA is being given 400 acres including the two 18-hole courses completed . . . Courses are to cost about \$300,000 each and the raw ground about \$3,500 an acre . . . Clubhouse and office building is expected to cost \$750,000 . . . Financing methods are yet to be determined . . . The \$10 the PGA charges members annually for support of the PGA course and the assessment the PGA has been adding to dues are sure to be continued . . . What PGA members would like to see is a budget for the proposed operation at West Palm Beach on the order of the budgets of expected income and proposed operating expenses that are customary at well managed private clubs.

PGA problem of informing members is part of the organization's growing pains . . . USGA is far ahead of the PGA in telling its members what is going on . . . USGA annual executive committee re-

Fairway and Tee Signs for improved marking of your course. Manufactured with experienced methods and proven finishes. Designed for effect and harmony.



Radiant T-to-Green Flags Brilliant colors that can be seen for 600 yards. Nylon fabric - strong and durable in all weather.

18

Course Master Golf Line

SIGNS

and Flags
FOR THE MODERN GOLF COURSE



Custom Club Signs - Fabricated to your design. Hi-strength aluminum alloy - Scotchlite finished. No maintenance for years.



Traffic Control Signs - to control traffic around the club roads, grounds and parking lots. Free literature available on complete CourseMaster Golf Line.

DEALERSHIPS
AVAILABLE

EASTERN METAL of ELMIRA, Inc.
347 GRAND CENTRAL AVENUE
ELMIRA HEIGHTS, N.Y.

