



(Above) In Jim Fogertey's shop at Sunset CC, Sappington, Mo., the gifts are piled near the club racks with care. (Right) Chuck Pedersen, pro at Rolling Green, Arlington Heights, Ill., greets shoppers. He also features the cocktail hour every hour. (Below) You're looking down the center fairway of Chuck Tanis' Christmas festooned shop at Olympia Fields (Ill.) CC.



XMAS COCKTAILS
AT
PRO SHOP
DEC. 13 TO XMAS



Gift selling revolves around island display at Tom Case's shop at Sedgfield in Greensboro, N. C.



(Above) Christmastime is the best time to get a youngster outfitted to start playing golf, says Chuck Pedersen. (Left) Nodding Santa Claus (lower left corner) attracts buyers to Jim Fogertey's Sunset shop. (Lower left) Here's the way John Wirbal gets set up at Nashua (N.H.) CC. More of Pedersen's shopping golfers are seen in lower right.





CLIMB HILL AFTER HILL AFTER HILL



... and eases you over fairways with smooth-flowing power. It's the G-N 1140, the battery your electric cars need to go places—quietly, quickly, economically, dependably.

Why pay more for a lesser product? Get the G-N 1140 from the people who best know how to build golf car batteries.

It's the battery that GIVES YOU:

- Rugged industrial type plates.
- Years of plate protection from double thick separators of glass and rubber.
- Flip top vent caps for quick maintenance checks.
- Hi-impact container—exclusive G-N design.

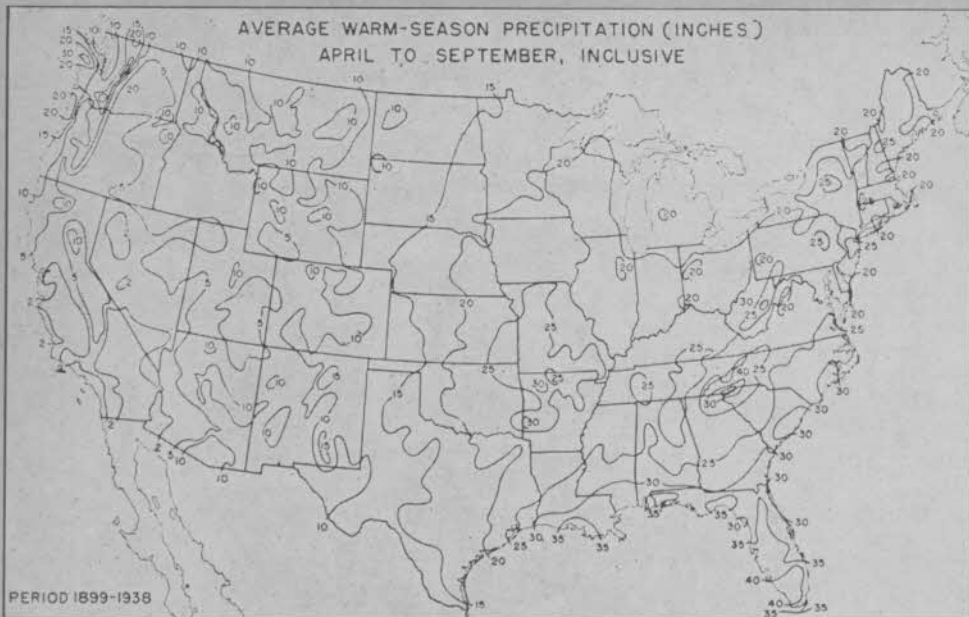
For more information write

The Originators of the Golf Car Battery



AUTOMOTIVE BATTERY DIVISION

GOULD-NATIONAL BATTERIES, INC. / St. Paul 1, Minnesota



Don't Depend Too Much on the Rainfall Pattern

By ROBERT C. MUELLER

Executive Secretary, Sprinkler Irrigation Assn.

Shown here is a map of the U. S. with the average warm season precipitation. In many areas of the country the average warm season precipitation looks great enough to properly maintain an acceptable turfgrass cover on a course. One thing these averages do not show is the timing and frequency of the rainfall . . . and this is most important. Nor do they tell how much fell; how much ran off without soaking into the soil. The beautiful lush green areas of the western slopes of both Oregon and Washington have annual precipitation figures of 40 to 100 inches. But the timing of the rainfall is so poor that extensive irrigation has to be carried on throughout the summer months to maintain a healthy turfgrass cover on golf courses.

The general Midwest area, where

warm season precipitation ranges from 20 to 30 inches, means that there could be as much as 120 days out of the approximately 180 day growing season with no rainfall. Periods of 7 to 14 days with no rainfall are a common occurrence enough times during the year to hold back turfgrass growth to the point that it loses traffic resistance.

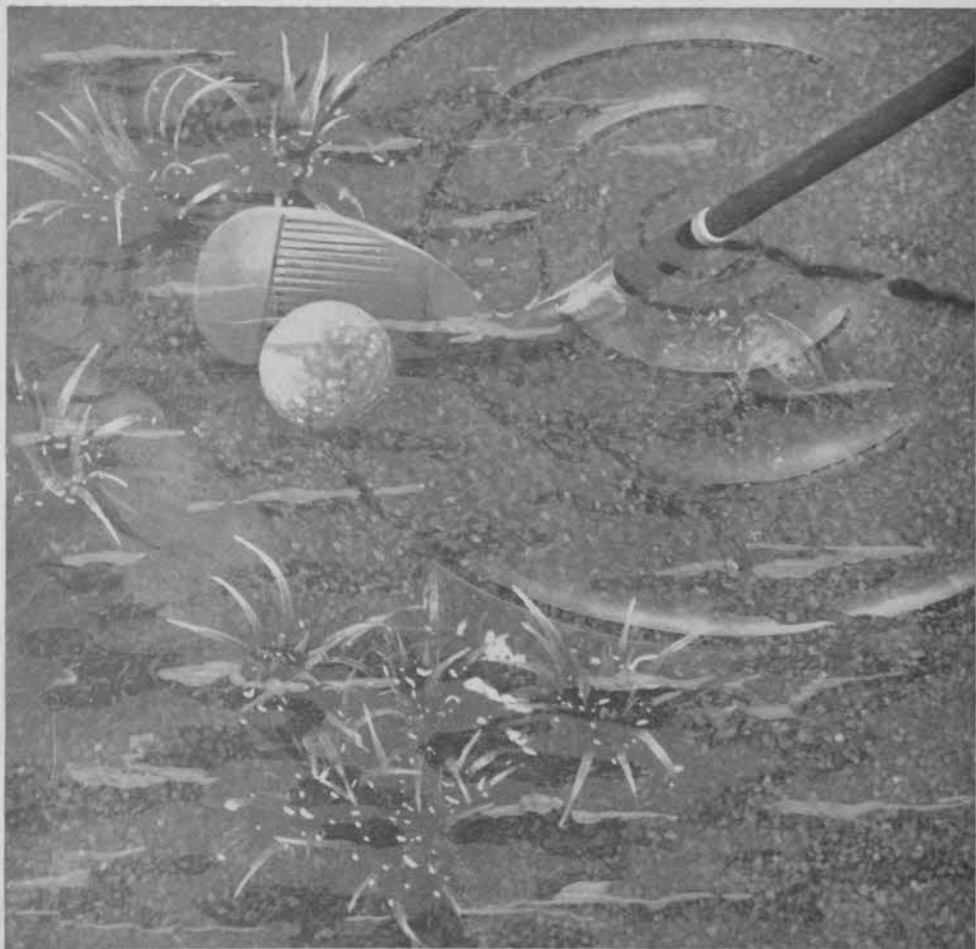
Much of the area of the state of Florida has 30 to 40 inches of rainfall during the warm season. But much of the state has very porous soil with low moisture-holding capacity. Irrigation is the only means of keeping turfgrass green through periods of high temperatures and no rainfall.

Two Factors Involved

So when you go out to look at the 13th fairway or the hilly area around the seventh and eighth holes, at least two factors might be causing the brown, uninviting, sick turf — inadequate timing of rainfall for optimum growth of the turf, or soils of low moisture-holding capacity that cannot maintain satisfactory turf from one rainfall to the next.

What is the answer to these low soil-moisture problems? The obvious answer is irrigation . . . to maintain proper mois-

(Continued on page 69)



GIVE GOLFERS A BREAK WITH
**TRIANGLE BRAND
COPPER SULFATE**

Rid water hazards of algae, weeds and bad odor. Triangle Brand Copper Sulfate helps keep water crystal clear. It's easy to use, economical and above all **dependable**.

Our free 32-page booklet tells the story in color photographs. Send for it today.



PHELPS DODGE REFINING CORPORATION

300 PARK AVENUE, NEW YORK 22, N. Y.



California Clinic

**P.E. Instructors, Recreation
Directors cram Golf Education
into four days at Monterey**



Short, 6-hole course was built into practice football field at Monterey clinic.



E. J. (Dutch) Harrison



Mrs. Carrol Gordon

California men and women physical education instructors, who are intent on elevating golf to equal status in colleges and high schools with the so-called major sports, increased their knowledge of the game by attending another All-Golf clinic on Monterey Peninsula late in June. The four-day meeting attracted about 150 p.e. instructors along with 50 city recreation directors.

The Clinic, which has been held every year since 1959, is jointly sponsored by the California Assn. for Health, Physical Education and Recreation and the National Golf Foundation. It is staged in cooperation with San Jose State College and the Northern and Southern Calif. PGA sections.

Exercise at Graduation

Three of the four days were devoted to what amounted to academic work. Graduation exercises consisted of a round of golf at either the Pacific Grove or Del Monte courses where the students put their newly acquired knowledge to practice.

(Continued on page 38)



(Left) Don Fry, Pacific Grove pro, helps woman student in guiding putts.



**Rich
Valentine
is sold:**

MERION MAKES THE SWITCH TO SOIL-SET SPRAY MULCH!

Rich Valentine, Superintendent of world famous Merion Golf Club, means it when he says: "Soil-Set works! At Merion it's been instrumental in establishing better turf . . . quicker!" No wonder he's all for Soil-Set's big advantages!

Late in March, he sprayed this amazing elastomeric polymer emulsion on freshly seeded areas around the course. Within a month, the turf was well on its way to a successful summer of use by Merion's crack golfers . . . thanks to Soil-Set.

Here's how it worked: Soil-Set formed a neat ground-hugging porous web on the prepared soil and controlled erosion and prevented seed displacement during the spring winds and rain. Soil-Set also eliminated the litter and extra labor of straw mulching. And, by absorbing the sun's heat

and holding water and fertilizer in the soil, Soil-Set actually speeded seed germination!

What Soil-Set has done at Merion and at other clubs such as Akron's Firestone Country Club, Soil-Set can do at your club . . . around the grounds and across the course. Write today for a free, fact filled report on tests and other actual case histories.



MILLER CHEMICAL & FERTILIZER CORPORATION
a division of **ALCO CHEMICAL CORPORATION**

3006 W. Cold Spring Lane • Baltimore 15, Maryland



(Above) Prof. Ben King is the narrator and his associate, Howard Smith, handle the demonstration during sandtrap session. (Right) Mick Riley of Salt Lake works the tee-line helping students get their swings straightened out.

Harrison Heads Teachers

E. J. (Dutch) Harrison, pro at San Francisco's Olympic Club, was the feature lecturer at this year's Clinic. He was aided by a PGA staff consisting of Mickey Riley, Meadowbrook, Salt Lake City; Howard Smith, Hacienda CC, LaHabra; Dave Mancour, Silverado CC, Napa; Ben King, Salinas G&CC; Don Fry, Pacific Grove; Joey Rey, Harding Park, San Francisco; and Jim Bailey, Pinehurst CC, Littleton, Colo.

Collegiate instructors included Mrs. Carol Gordon of Stanford; Ken Griffin, L.A. City College; Tay Brown, Compton College; Hal Buffa, Mt. Diablo Valley College; Gerry Vroom, San Jose State; and Vern Mullen, Taft Junior College.

Bayonne Golf Club Talks A Good Game

About 600 persons who belong to the Bayonne (N.J.) Golf Club don't have a course but they play and talk golf the year around. The club was organized about two years ago by Frank Rossiter of the Bayonne dept. of parks, who has been an ardent golfer for at least 50 years. Club meetings are held periodically and Rossiter either stages clinics at them or gives group and individual lessons. The City Park



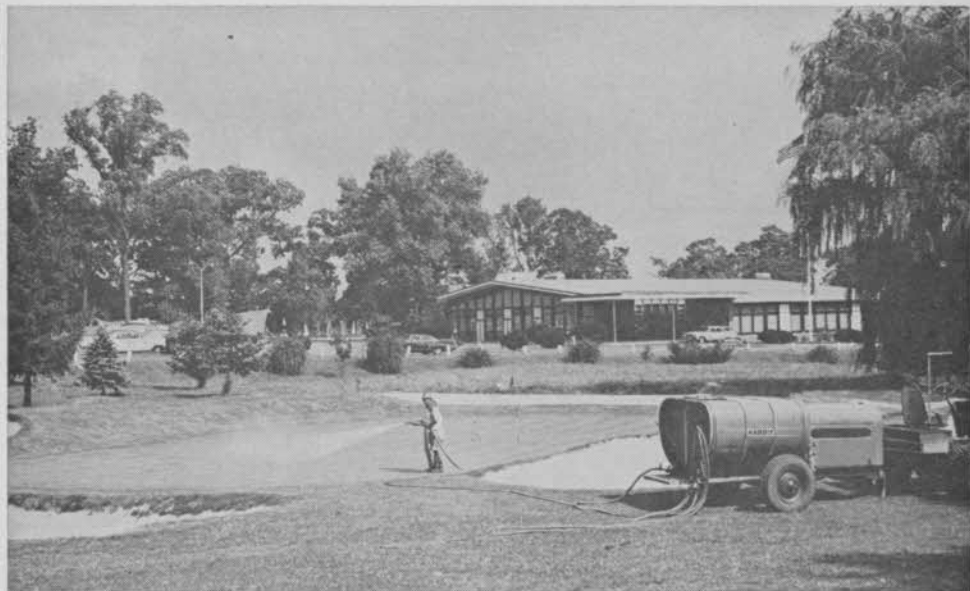
stadium, which has a fieldhouse, serves as a site for the meetings. As many persons sit around and talk golf as swing a club.

Youngsters in Club

The membership includes 200 women, a 92-year old man and two fellows who are in their 70s. There are competitions at the Stadium for those who want to enter them—hole-in-one contests, target shooting and driving tests. In the fieldhouse there is a driving net, chipping cage and putting green and possibly more swinging is done in the wintertime than during the summer.

The Bayonne GC annually sponsors two tournaments at local courses. But more people than not would rather sit around and talk about the game.

THE TREND IS TO HARDIE*



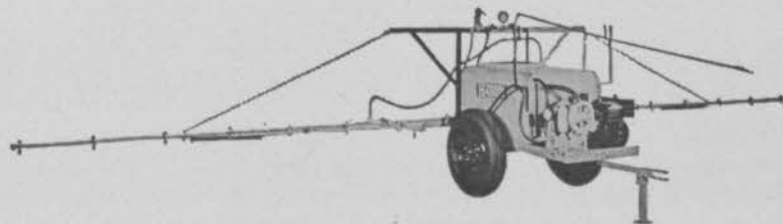
Ashbourne Country Club, Cheltenham, Pennsylvania

THE FINEST IN GOLF COURSE SPRAYING EQUIPMENT

Yes . . . the trend is to Hardie . . . because with a Hardie, the beauty of your fairways, greens and club house grounds can be preserved with dependable ease . . . Hardie Hi-Pressure sprayers are available in sizes from 3 to 60 gallons per minute. Pressure is adjustable from 50 lbs. for weed spraying to 800 lbs. for hand spraying greens, shrubs, etc. The Hardie Hi-Lo pressure regulator weed boom is considered by many Golf

Course Superintendents as the ultimate in boom design and performance. Hardie also manufactures a complete line of single and multi-nozzle spray guns for exacting green or shade tree work.

There is a budget-priced Hardie Sprayer, with either the famous long-lasting Hardie Douglas-Fir wood tank, or the conventional steel tank to meet your exact requirements. See your Hardie dealer soon, or write for illustrated literature.



FILL IN COUPON
AND MAIL
NOW

HARDIE

DEPENDABLE EQUIPMENT

* SOLD AND SERVICED



The Hardie Manufacturing Company Inc. Dept. G
730 South Main Street, Wilkes-Barre, Pa.

NAME

ADDRESS

CITY State

*BECAUSE HARDIE GIVES YOU YEARS OF DEPENDABLE PERFORMANCE



Turf Tips from O. J. Noer

Excavate to Four-Inch Depth for Golf Car Paths



This path runs alongside 9th tee at Ponte Vedra.

Golf cars can play havoc with Bermuda-grass in concentrated areas, especially alongside greens and tees. Paths are the answer at Ponte Vedra in Florida.

Blacktop, edged with wood or metal, is used in constructing the paths. They are quite wide and are made even wider in some areas to provide parking spaces so that main routes aren't blocked.

The 16th hole is a very fine par 3. Before the path was put in, it was impossible to keep turf alongside the right side of the tee. Now there is a blacktop drive plus a parking area adjacent to it. The old, worn path through the turf has



(Left) Sod was used to repair old, worn path adjoining 16th tee. (Right) New blacktop path at 16 with parking area near trees.



been repaired with sod.

Within two months after the path was constructed, Bermuda started to come through the blacktop. The trouble was that sod and soil had been removed to a depth of only two inches when the excavation was made for the path. The blacktop was laid directly on top of the soil.