



Ryan MATAWAY...the profitable new turf maintenance unit

- Controls Zoysia, Hybrid Bermudas, St. Augustine, all types of blue grasses
- Heavy duty unit: Full 9 HP engine, two-speed transmission
- Easily lifts out thatch from warm climate grasses
- Quick-change reel assembly, adjustable slicing depth

The Ryan Mataway is a vertical slicing unit with self-propelled action for minimum operator fatigue. High performance — up to 23,000 sq. ft. per hr. — makes it a *profitable* as well as *dependable* unit you can use all season long to improve the condition of all kinds of grasses. Call or write for specifications and a demonstration.



LANDSCAPING EQUIPMENT

Division of K & N Machine Works

871 EDGERTON STREET • ST. PAUL 1, MINN.

Company

World Wide Sales Through Leading Turf Equipment Distributors



GREENSAIRE



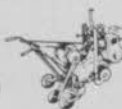
SPIKAIRE



MOTORAIRE



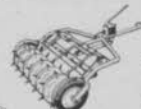
ROLLAIRE



SOD CUTTER



TRACAIRE



RENOVAIRE



MAT-A-WAY



REN-O-THIN

MODERN



LAWN MOWER SHARPENERS

a complete sharpening
shop in one machine

Here's an opportunity to save time and gain accuracy in maintaining your lawn mowers. The simplicity of the Modern Sharpener makes it ideal for anyone to operate and turn out perfect jobs.

Modern precision grinding insures uniform contact of reel blades and bed knife over the entire length of the mower. Your mowers are sharpened true to one 1/1000th of an inch. No hand filing is necessary—blades are ground sharp to their extreme edges. The Modern has a combination grinding head that sharpens both the reel and bed knife with mower intact.

If you're sending your mowers out for sharpening, you'll save as much as \$8.00 per reel in some parts of the country. With a Modern, there's no time lost waiting for outside work to be completed. Your lawn maintenance men can keep the mowers sharp between cuttings.

Send the coupon below for complete details on Modern Lawn Mower Sharpeners.

FOLEY MANUFACTURING COMPANY
3451 5th St. N.E., Minneapolis 18, Minn.

Please send Modern Lawn Mower Sharpener folder:

Name _____

Address _____

7, is architect of the Carswell Air Force Base course being built at Fort Worth across from Marvin Leonard's palatial Shady Oaks CC . . . Ernest Smith of Gulf View Drive, Tequesta, Jupiter, Fla. has designed another 9 for Rio Mar CC, Vero Beach, Fla., and the Silver Lake par 60 course at Tampa, Fla. . . . U. S. military golf in Japan, Korea and elsewhere in the orient has been getting the benefit of the services of Major "Bucky" Harris, a man who knows how to bring a course into interesting playing condition . . . Harris was at the GCSA meeting at Miami Beach and visited private and military courses in the U. S. recently in the hunt for ideas to be used at military courses overseas.

The Professional Golfers' Co-operative Assn., Ltd., so ably managed by George Gibson, has moved its warehouse and main office in London to Golf House, Deodar Road, Putney, London, S.W. 15 . . . About 80 per cent of British golfers' buying is done in pro shops . . . The new property of the PGCA formerly was the Spalding British plant . . . Spalding now is in its new plant in Northern Ireland . . . Gibson organized the great

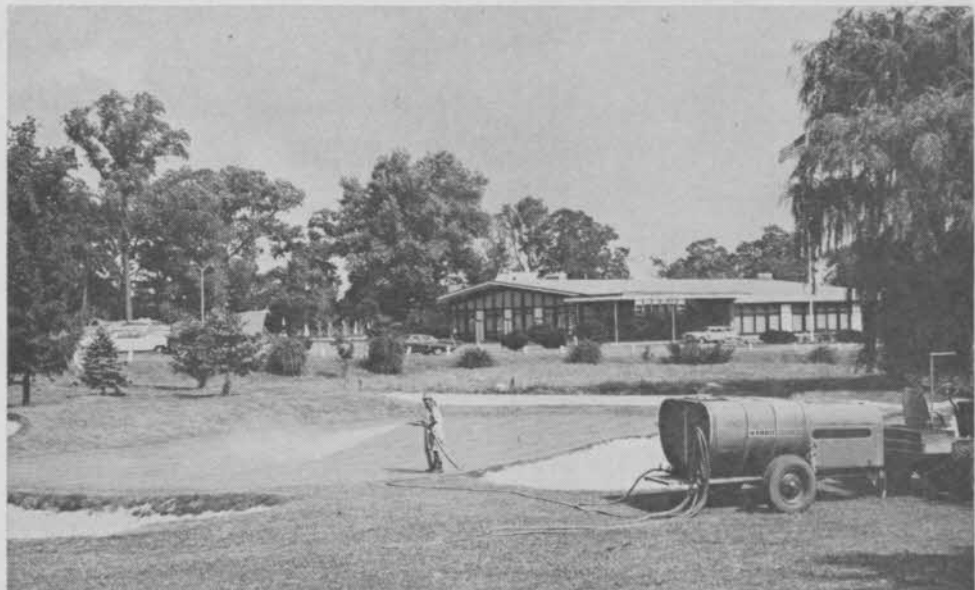
NEW ENGLAND HEADQUARTERS

BUCKNER Sprinklers
JARI Power Scythes
LINDIG Shredders
MILORGANITE Fertilizer
MODERN Grinders
PAR AIDE Accessories
ROTO-WERL Spreaders
RYAN Turf Tools
TORO Mowing Outfits

THE *Clapper* co.

1121 WASHINGTON STREET
WEST NEWTON 65, MASS.

THE TREND IS TO HARDIE*



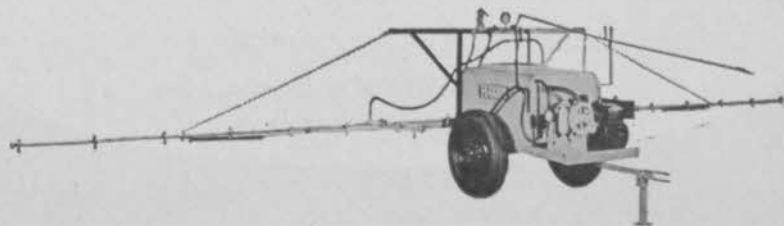
Ashbourne Country Club, Cheltenham, Pennsylvania

THE FINEST IN GOLF COURSE SPRAYING EQUIPMENT

Yes . . . the trend is to Hardie . . . because with a Hardie, the beauty of your fairways, greens and club house grounds can be preserved with dependable ease . . . Hardie Hi-Pressure sprayers are available in sizes from 3 to 60 gallons per minute. Pressure is adjustable from 50 lbs. for weed spraying to 800 lbs. for hand spraying greens, shrubs, etc. The Hardie Hi-Lo pressure regulator weed boom is considered by many Golf

Course Superintendents as the ultimate in boom design and performance. Hardie also manufacturers a complete line of single and multi-nozzle spray guns for exacting green or shade tree work.

There is a budget-priced Hardie Sprayer, with either the famous long-lasting Hardie Douglas-Fir wood tank, or the conventional steel tank to meet your exact requirements. See your Hardie dealer soon, or write for illustrated literature.



FILL IN COUPON
AND MAIL
NOW

HARDIE

DEPENDABLE EQUIPMENT

* SOLD AND SERVICED



The Hardie Manufacturing Company Inc. Dept. G
730 South Main Street, Wilkes-Barre, Pa.

NAME

ADDRESS

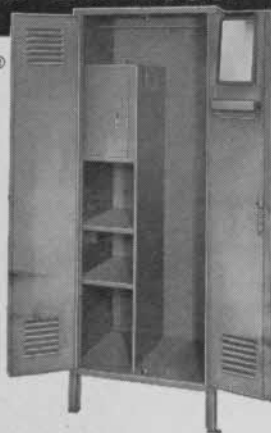
CITY State

*BECAUSE HARDIE GIVES YOU YEARS OF DEPENDABLE PERFORMANCE

**Your Club
Deserves the Best!**

**LYON®
Golf
Lockers**

**cost
no more—
why settle
for less?**



Write for literature giving complete description of GOLF LOCKERS, GOLF BAG RACKS, FOLDING CHAIRS, STORAGE CABINETS, COAT RACKS, TABLES, DESKS, FILING CABINETS.

LYON METAL PRODUCTS, INC.

General Offices: 437 Monroe Ave., Aurora, Ill.
Factories: Aurora, Ill.—York, Pa.—Los Angeles
Dealers and Branches in All Principal Cities

farewell dinner honoring Cmdr. Roe who retired last Dec. as sec. of the British PGA . . . Gibson is widely known to U. S. pros . . . During World War II he went to an air force school in Florida.

Roy Holland of National Golf Foundation says Colonial Palms, Miami, Fla., with 3,400 yds. is longest lighted Par 3 he knows of . . . Do you know of any longer?

Turnover in pro, supt. and manager jobs about 15 per cent higher than any previous year, says Florence Taylor, GOLFDOM's circulation manager, and that girl knows what the score is . . . Among pro changes: Jack Garner to Twin Lakes G&CC, Norman, Okla. . . . Monte Bradley, Meadowbrook CC (St. Louis dist.) . . . Jules Platte to Paradise Valley CC, Phoenix, as teaching pro with Kenny Kier . . . George Bingham also is on the Paradise Valley staff in the winter . . . Bobby Kober now pro at Vandenberg Air Force Base, Santa Maria, Calif.

Marshall Farnham, former pres. of the GCSA is a fellow you'd not believe re-

DURABLE

Course Master Golf Line

GOLF SIGNS *and Flags*

by Eastern Metal of Elmira, Inc.

651 GRAND CENTRAL AVE.
ELMIRA HEIGHTS, N. Y.

DEALERSHIPS AVAILABLE



Graphic-T-Signs
Manufactured of Aluminum and Baked Enamel. Newest concept in Course marking. Mounted in push-in steel frame. Write for Free literature on complete line.



Custom Club Name Signs
Designed to your order. Colors Scotchlite reflectorized on heavy gauge aluminum. Years with no maintenance.



Fairway Guide Signs - Highly readable and attractive signs to guide and improve play. Complete line covering rules, cart traffic and directional marking.



Radiant T-to-Green Flags
Long range visibility. Red-orange and yellow fluorescent colors on nylon fabric. Strength and durability in all kinds of weather.



How many more ways can you work it around the club?

With 5-ft. pickup box • four-wheel-drive • full-length top, enclosing 78½ cu. ft. of cargo space • 93 hp, 4-cyl. engine • gang-mower • winch • rear mounted three-point hitch • snow plow • flotation tires

Run supplies out to the halfway house... carry watering equipment... bring in clubhouse supplies... pick up guests... tote tools... haul fertilizer... pull a gang-mower... winch out boulders and dead trees... plow driveway snow... the list goes on and on.

To find out where you can get so much work done at such little cost, see your INTERNATIONAL SCOUT Dealer or Branch. International Harvester Company, Chicago, Illinois.

And it's priced as low as

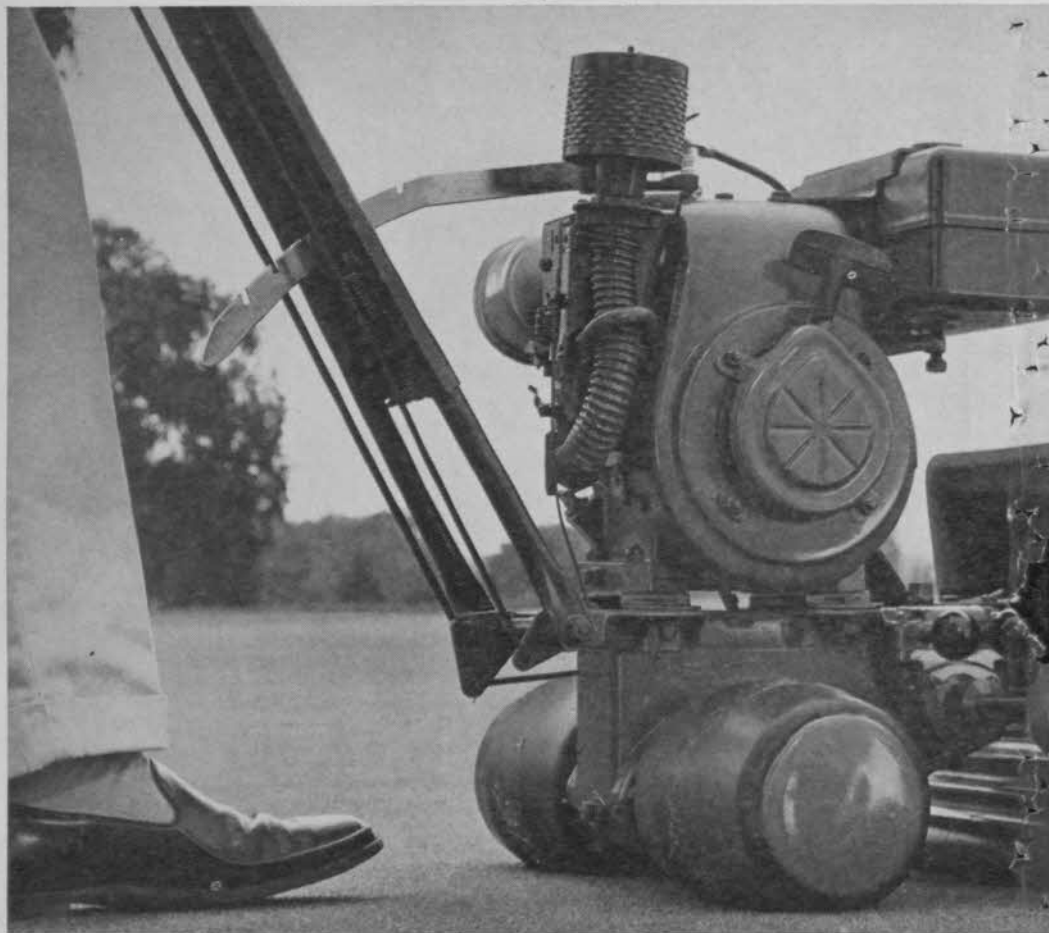
\$2282.93

Manufacturer's suggested retail price of Scout four-wheel-drive model, including steel TRAVEL-TOP and directional signals, but excluding state and local taxes where applicable and destination charges.

THE SCOUT *by* **INTERNATIONAL®**



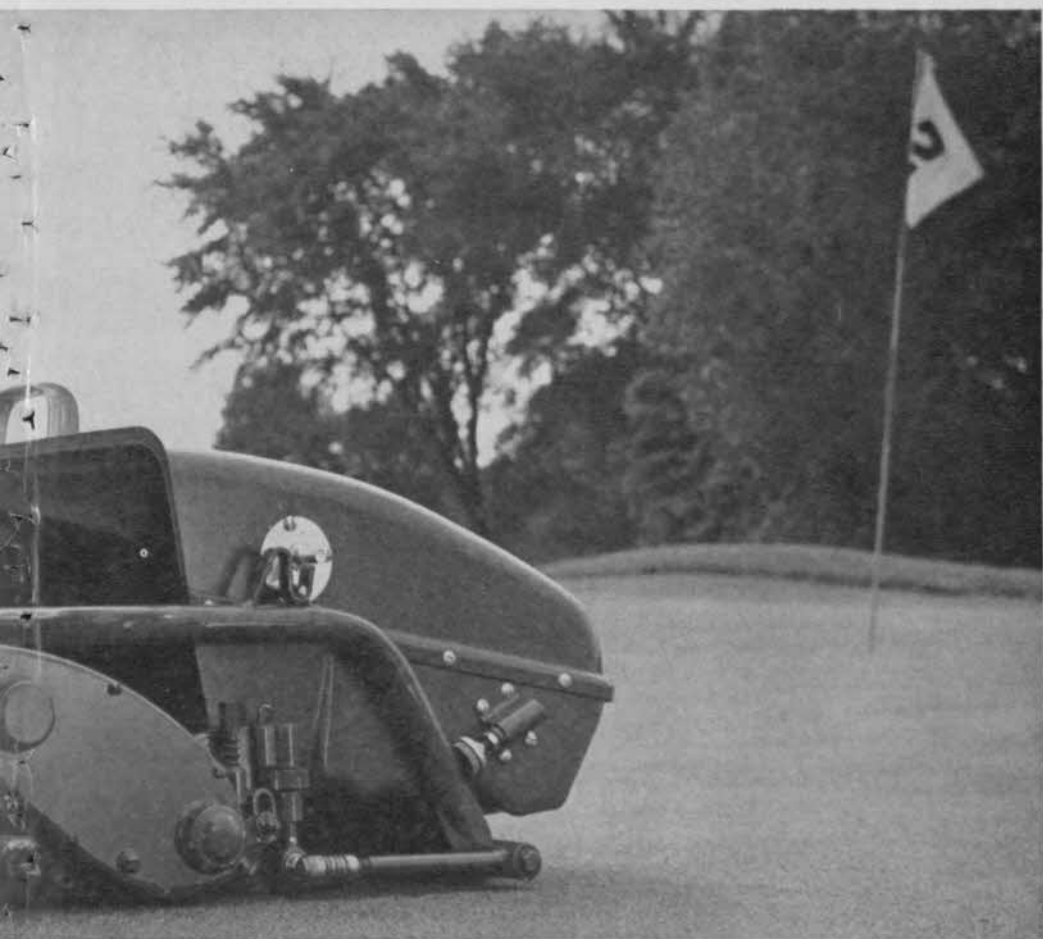
Ask the top men why they choose **TORO®**



"Lightweight touch...heavyweight touch...makes no difference with our TORO Greensmaster"

*Says Palmer Maples Jr., Greens Supt. at
Charlotte Country Club, Charlotte, No. Carolina*





"No matter how big or small, heavy or light, skilled or unskilled our greensmen are, all of our greens look uniform and even—thanks to our Toro Greensmasters," reports Palmer Maples Jr. of Charlotte Country Club.

Because of its unique three part construction the Greensmaster® gives you constant cutting weight. No matter how hard or soft you push on the handle, the cutting reel maintains constant, even pressure on the green.

The traction unit consists of a 3 hp engine, gear box, soft rubber traction drums and handle. The catcher is connected directly to the traction unit by a supporting fork with roller. The cutter is a 21-inch, 12 blade reel mounted between catcher and traction unit, completely independent of both for floating action without digging or gouging.

The "Greensmaster" can save you time and money. Call your Toro distributor today for a free demonstration.

**Toro Manufacturing Corporation,
3025 Snelling Ave., Minneapolis 6, Minnesota, U.S.A.**

Toro's fleet financing plan is available

TORO

KEN Shop Supplies

Help You Give Better Service



PRORYTHMIC

Golf and Tennis Balance

Used by virtually every golf club maker throughout the world for accurately measuring swinging balance and correct weight. Essential in any Pro shop where golf clubs and tennis racquets are sold. Made and sold only by Kenneth Smith.

ALSO: Ellingham Tools, Grip Conditioner, Adhesives, Listing, Buffing and Cleaning Supplies — and all other shop needs. The most complete stock of golf supplies in the golf industry.

Write for handy SHOP SUPPLY LIST

Kenneth Smith GOLF CLUBS

Hand-made to fit You

World's Largest Custom Club Maker

Box 41-GM, Kansas City 41, Mo., U.S.A.



cently retired after 38 years as supt., Philadelphia CC . . . After graduating from Cornell in 1917 he spent 5 years in plant genetics at Cold Spring Harbor, N.Y., under the direction of the Carnegie Institute . . . He served as pres., of the Philadelphia Assn. of GCS, on the Green Section committee and on the Turfgrass Research Advisory committee of Pennsylvania State university.

Stan Dudas, who resigned as pro at North Hills CC (Philadelphia dist.) to be pro at Scioto CC, Columbus, O., resigned at Scioto before getting to the job . . . Jimmy Clarke, previously asst. to pro Clare Emery, Washington G&CC (Washington, D.C. dist.) succeeds Billy Gilbert as pro at Argyle CC in the Baltimore dist . . . Dave Hill now pro at Highlands (N.C.) CC.

Dick Lundahl named pro of new Shar-on Heights G&CC, Menlo Park, Calif. . . . Jack Weingert signed as pro at Kearsarge Valley CC, North Sutton, N.H. . . . Bamm Hollow CC, Middletown, N.J., opens . . . Robt. Squillare is pres. . . . Vito (Red) Gaeta is pro . . . Ken Stear promoted from asst. to pro spot at Huntington Valley CC succeeding Ken

REPLACE WITH **BOWERS**

BIG RAM

BATTERIES

... and end your GOLF CAR
BATTERY Troubles



Forty years' experience building quality batteries for battery-driven equipment— industrial material handling trucks, mine locomotives, mine shuttle cars—is built into every Bowers Golf Car Battery. You can be certain your current battery problems will end when you change to Bowers Big Ram Batteries. Their Extra Quality means Greater Power, Longer Trouble-Free Life . . . and at a lower initial cost,



BOWERS

BATTERY & SPARK PLUG CO., READING, PA.

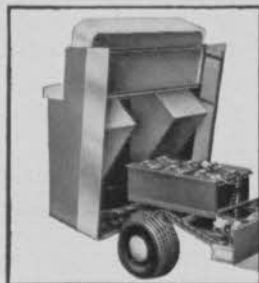
(Div. of General Battery and Ceramic Corp.)

PLANTS: Reading, Pa.; Greer, S. C.; New Philadelphia, Ohio
BRANCHES: Charlotte, Baltimore, Philadelphia, New Haven,
Buffalo, Pittsburgh, Macon, Columbus



Babies the Turf... A Bear for Wear

ALL-NEW 1962 VICTOR ELECTRI-CARS



Flip-top body gives full access to working parts, makes servicing a cinch.

No-spin starting, no-scuff turning, no-skid stopping—Scientific balancing distributes most weight over differential axle. Keeps drive wheels firmly on ground for full traction, top maneuverability. Choice of 8.00 x 6 or 9.50 x 8 or Goodyear Terra Tires.

Virtually maintenance-free—Rugged automotive and aircraft components keep your Victor fleet in profitable operation continuously. New 2 H.P. Hi-Torque motor and direct drive deliver plenty of power, boost mileage per charge, cut operating costs to pennies a day!

Phone or write today for full details and "Select-A-Date . . . We'll Demonstrate" program



VICTOR ELECTRI-CAR CO.

DIVISION/VICTOR COMPTOMETER CORPORATION
CHICAGO 18, ILLINOIS • KEYSTONE 9-8210

the distinguished
Magic Fleece
 COUNTRY CLUB LINE



EXCLUSIVE
 GOLF SOCKS
**SOLD DIRECT FROM
 MILL TO PRO
 SHOP**

Write Today for
 Name of Your Representative

Magic Fleece

ROCKFORD TEXTILE MILLS, INC.
 McMINNVILLE, TENNESSEE

Gibson who now is pro at Indian Springs CC, Marlton, N.J. . . . Larry Snyder now pro at Bellefonte CC, Ashland, Ky.

Modest Emil Beck, pro at Black River CC, Port Huron, Mich., in putting over the PGA business school program, with classes in Florida, California, Texas and New York each year, is said by many pros, manufacturers and club officials to have done more for pro golf business than any other one man and now can be happy that his pro school idea is in international use . . . The British PGA recently held three courses for assistants . . . Western, Central and Northeastern PGA Sections hold their combined third annual business school at Powers Hotel, Rochester, N.Y., April 12-13 . . . Beck will conduct PGA Florida School in 1963.

Old York Road CC, Jenkintown, Pa., buys \$250,000 Ambler, Pa., estate of late Howard B. Brown and is to build new club on the 128 acres . . . Will move from its present property in 1963 . . . Riverside CC, Battle Creek, Mich., to have new course, designed by W. Bruce Matthews, at present site . . . Revision made

Longest "DRIVER" in your golf cars



Trojan Mileage Master Golf Car batteries are of special design for deep cycling and built for rugged service... you get:

1. More months of service
2. More rounds of golf
3. Special "Quick Water" vent caps
4. Service time reduced 75%
5. Lowest maintenance and monthly cost



TROJAN BUILT THE FIRST GOLF CAR BATTERIES.

"MILEAGE MASTER" features "QUICK-WATER" quarter turn vent caps

TROJAN GOLF CAR BATTERIES

TROJAN BATTERY CO., 724 E. 61st, LOS ANGELES 1, CALIFORNIA