



OLD TIMERS

Don't by-pass AQUA-GRO in your plans for fall renovation. Keep the drum in a warm location (65°) so it will pour during the cooler weather.

(1) OVERSEEDING — try applying 16 oz. of AQUA-GRO per 100 gals. at weekly intervals. You'll increase germination rate by 50%, and get more uniform germination and faster rooting.

(2) SODDING responds to 8 oz. AQUA-GRO per 1000 sq. ft. Water AQUA-GRO in, and sod roots will knit faster because of reduced moisture tensions at soil boundaries.

AQUATROLS CORP. OF AMERICA

217 ATLANTIC AVE.

CAMDEN 4, N. J.

Quarry Used as Water Supply Ruled Not Abandoned

By WILLIAM JABINE

The legal rule that a statute must be strictly construed proved helpful to a California golf club recently when it was sued by the parents of a boy who had been drowned in an old quarry excavation owned by the club and used as a reservoir for supplying water to fairways and greens. In bringing the action, the plaintiffs relied on a California law:



"Every person owning land in fee simple . . . who knowingly permits the existence on the premises of any abandoned mining shaft, pit, well, septic tank or other abandoned excavation dangerous . . . to minors under the age of 12 years, who fails to cover or fence securely any such dangerous abandoned excavation,

and keep it so protected, is guilty of a misdemeanor."

Fence in Poor Repair

The disused quarry had been acquired by the club in 1930 and a pump installed to take care of the watering system. The quarry was surrounded by a barbed wire fence. However, testimony showed that the fence had not been kept in good repair and that there were several gaps in it. The plaintiffs obtained a verdict in their favor in the trial court after the judge had read the above quoted statute to the jury and instructed the jury that if it found that the statute had been violated, there would be a presumption that the club was negligent.

The club appealed to the first district court of appeal, div. 2, which after a thorough review of the evidence, reversed the action of the trial court. In its opinion, the court of appeal pointed out that inasmuch as the statute must be strictly construed, it must be proved that the excavation into which the boy fell had been abandoned, not only as a quarry, but for all other purposes. On this point the court of appeal said:

Not an Abandoned Pit

"Appellant argues that under the undisputed facts of this case it was estab-

Superintendents tell how they

Prevent snow mold by spraying with



Snow mold stops where "Tersan" 75 is applied. An application of "Tersan" 75 would have prevented the snow mold on the apron as it did on the green. Note how the snow mold damage stops right at the green. You can get the same excellent protection on greens, aprons, tees and fairways by applying "Tersan" 75 or "Tersan" OM fall and spring as recommended.

Du Pont Turf Products

TERSAN® 75
turf fungicide

—for top control of such
diseases as brown patch
and snow mold

from damaging turf Du Pont Tersan[®] 75

TURF FUNGICIDE

No snow mold where he applies "Tersan" 75

"In late November, just before snow time, I apply 'Tersan' 75 with sand as a carrier, and I've never had snow mold on my greens. Applied properly, 'Tersan' 75 gives excellent protection.

"For disease control throughout the playing season, I have used 'Tersan' 75 on my greens since it came on the market, spraying at recommended rates every week or ten days. I have never had disease on my greens."



Mr. Richard Baxter
Pro-Supt., Taconic Golf Club
Williams College
Williamstown, Massachusetts



Mr. Frank A. Sirianni
Superintendent
Sewickley Heights Golf Club
Sewickley, Pennsylvania

"Experience has taught me that 'Tersan' 75 offers excellent protection from snow mold damage. I used 'Tersan' 75 for snow mold control on 19 greens of new Pencross grass and had excellent results, even though there was quite a bit of snow mold on the unsprayed fairways. This fall I'm planning to spray the whole course with 'Tersan' 75.

"During the playing season 'Tersan' 75 gives excellent protection, and it is a real labor saver. It's compatible with soluble fertilizers and insecticides; it mixes easily and doesn't clog sprayer nozzles."

"Uramite" ureaform fertilizer is ideal nitrogen source. Mr. Sirianni goes on to say, "I use 'Uramite' on the greens twice a year, once in May and again around Labor Day. I've used 'Uramite' on two new courses in the last five years and have found it an ideal nitrogen source for establishing greens and maintaining good, healthy turf growth all season long. My father, John Sirianni, superintendent for 43 years at the Conewango Valley Country Club, Warren, Pennsylvania, and I have used 'Uramite' ever since it came on the market."

On all chemicals follow labeling instructions and warnings carefully.

SEMESAN[®]

turf fungicide

—specially prepared mercurial for hard-to-control diseases

TERSAN[®] OM

turf fungicide

—combines the effectiveness of "Tersan" 75 with organic mercury

URAMITE[®]

ureaform fertilizer

—38% nitrogen—
feeds slowly, keeps nitrogen at proper level



REG. U.S. PAT. OFF.

BETTER THINGS FOR BETTER LIVING
... THROUGH CHEMISTRY

Longest "DRIVER" in your golf cars



Trojan Mileage Master Golf Car batteries are of special design for deep cycling and built for rugged service... you get:

1. More months of service
2. More rounds of golf
3. Special "Quick Water" vent caps
4. Service time reduced 75%
5. Lowest maintenance and monthly cost

TROJAN BUILT THE FIRST GOLF CAR BATTERIES.



"MILEAGE MASTER" features "QUICK-WATER" quarter turn vent caps

TROJAN GOLF CAR BATTERIES

TROJAN BATTERY CO., 724 E. 61st, LOS ANGELES 1, CALIFORNIA

lished as a matter of law that its reservoir, although located in an excavation which was the result of quarrying operations long since abandoned, was not an abandoned pit or excavation within the meaning of the statute. We have concluded that appellants' contention in this respect is correct. The evidence establishes without contradiction that the excavation is, and for many years has been, continuously used as a reservoir from which appellant regularly takes water by means of a pump installed therein for use in the irrigation of its course. For whatever reason, the legislature in enacting sec. 24400, expressly limited its application to abandoned excavations. An excavation which is being put to a continuous useful purpose can't be regarded as abandoned.

Question Law Makers' Motives

"Respondents refer to it as an abandoned quarry but it has not thereby become an abandoned excavation. As an excavation it is being continuously used as a reservoir and it is no more abandoned than any other artificial excavation which is similarly used."

Having by innuendo questioned the motives of the legislature in enacting the

measure which it felt compelled to construe strictly, the court of appeal went on to hint that even though the club had not violated the statute, it might be guilty of plain, ordinary negligence in letting the fence fall into disrepair. That, however, would be up to the jury at a new trial. (Schaffer v. Claremont Country Club, 336 P. 2d 254, On Rehearing, 337 P. 2d 139.)

396 in Cleveland Junior

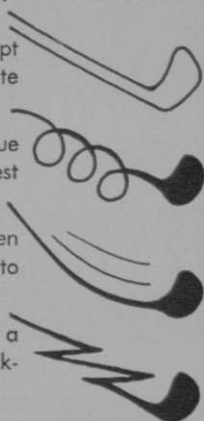
The Cleveland Dist. Golf Assn. and the city's Recreation Dept. staged one of the country's biggest Junior golf tournaments, Aug. 7-8 at Seneca GC with 396 kids ranging in age from 9 through 17 taking part. Play was conducted over the two 18-hole courses at Seneca, one of the finest munny operations in the U. S., and scores ranged from 73 to a valiant 218. Harry C. Pollock, sec. of CDGA, was the tournament director. John Dzurik of Parma, O., was the field winner with a 153. Steve Hopkins, in the 15-year old division, shot a 157, lower than the scores submitted by the 17-year old winner, Ken Sito, (158), and Bill Hopperman, Jr. (160) in the 16-year old flight.

HICKORY TO GLASSHAFT

—a report on the development of today's COMPLETE GOLF CLUB.

Old time golfers had little choice when it came to club shafts; the best available was hickory wood. In view of subsequent developments, hickory had its limitations:

1. **SHAFT DIAMETER:** Too bulky, particularly when an attempt was made to manufacture wood shaft clubs of adequate stiffness for hard hitters.
2. **TORSION CONTROL:** "Twist" was an inherent problem due to the nature of the material. Obviously, even the slightest "club head wobble" affects accuracy.
3. **FLEX CONTROL:** Again, due to the nature of the wooden material and manufacturing limitations, it was difficult to achieve properly matched degrees of stiffness.
4. **VIBRATION CONTROL:** Wood, as compared with steel, is a non-conductor. Thus, hickory shafts were reasonably shock-free, unless they split (which happened all too often!).



How far have we progressed?

Today, three types of shafts are available: All-Steel; Hollow Fiber Glass; and GLASSHAFT — Fiberglas surrounding a steel core. Each has its own characteristics:

	SHAFT DIAMETER	TORSION CONTROL	FLEX CONTROL	VIBRATION CONTROL
ALL-STEEL	SLIM	GOOD	GOOD	POOR
HOLLOW FIBER GLASS	BULKY	POOR	POOR	GOOD
GLASSHAFT <small>(FIBERGLAS PLUS STEEL CORE)</small>	SLIM	EXCELLENT	EXCELLENT	EXCELLENT

You can undoubtedly hit good shots with whatever modern equipment you use. But only GLASSHAFT's scientific combination of steel plus fiberglas gives you the extra measure of control that means a better game—**consistently**.

Play *glasshaft*—the prestige club



Golfcraft

SOLD WITH PRIDE
thru
ProShops
only

ESCONDIDO, CALIFORNIA • CHICAGO, ILLINOIS • VANCOUVER, CANADA

1962

Gary Player,
Jimmy Remaret
and
First Flight
CLUBS

Custom Built
to fit you

AT NO EXTRA COST

Gary and Jimmy personally developed the 1962 lines of clubs. They incorporate the best ideas of two of the greatest golfers of all times and are custom built to any specifications prescribed by your golf professional at no extra cost.

Every club in a set feels and swings exactly alike. Think what a set of these superb custom built clubs can do to increase your pleasure in your game and to lower your score!

Gary Player
CLUBS*



*Irons, \$18.00 Each. Woods, \$26.00 Each.

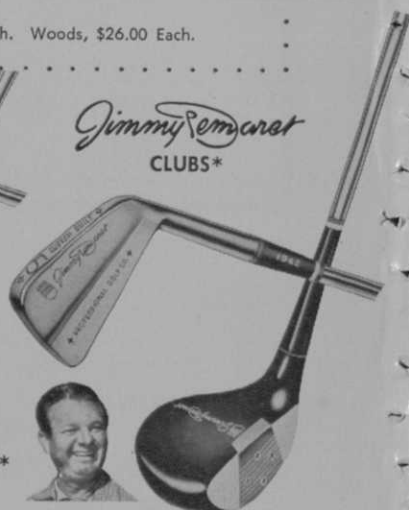


**"GREATEST
SUCCESS
IN GOLF BALL
HISTORY"**

The First Flight ball has a perfectly round steel center positioned exactly in the center of the ball. This serves as a stabilizer, helps the ball spin smoothly through the air, resulting in greater distance, greater accuracy . . . and more holes-in-one.

61-45

Jimmy Remaret
CLUBS*



First Flight CLUBS*

SOLD ONLY IN PRO SHOPS

Fitted by your golf professional

First Flight COMPANY
Chattanooga 5, Tennessee

Manager's Check List for Rating Efficiency of Food Operation

Writing in a recent edition of the 'Club Gazette,' published by the Chevy Chase (Md.) club, Charles E. Smith, general manager, suggested the following check list for rating the efficiency of the food operation:

Is all merchandise purchased on specification?

Is all food weighed in, and are bills checked for price and quantity?

Are there scales on which to weigh in food?

Are credits requested for shortages and incorrect pricing?

Are thermostats installed in all range ovens and bake ovens?

Accurate thermometers installed in all refrigerators?

Do you examine the contents of refrigerators carefully and frequently?

Is your storeroom scientifically arranged so that a maximum amount of food can be

stored within easy reach?

What is the condition of your dish room?

Machine or sinks adequate to do the job?

Is dish water 140° and rinse water 180° in the machine?

Do you have reputable detergent representatives check use of cleansing product and advise and instruct on the dish machine maintenance?

Do garbage cans reflect waste upon examination, or do you never look into garbage cans?

Do you ever inspect returned plates to see what is left?

Are the grease traps and exhaust grills cleaned often?

What do you think of the general layout in the kitchen?

What could be done to reduce needless steps?

Can any of the equipment be moved or changed to help streamline production?

Ever check the size of portion scoops and ladles to see if they are doing the job you want them to do?

Do you know what each dish costs?

THE LOGICAL WAY TO SHIP GOLF CARS! *Uncrated - Via Enclosed Vans*

- ◆ Eliminate Crating and Uncrating
- ◆ Fully Protected from Road Gravel and Weather Damage

- ◆ Finest Modern Vans Carry Up to 20 Cars
- ◆ No Unloading Facilities Needed at Club
- ◆ Cars Ready for Instant Use at Destination in Perfect Condition
- ◆ Cars Receive Tender Care in Padded Vans—All the Way

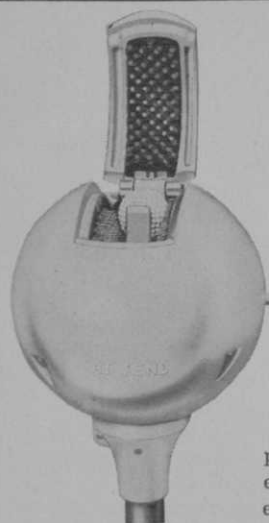


Authorized National Carriers
Call Collect for
Immediate Service



TRANS-AMERICAN VAN SERVICE, INC.

7540 SOUTH WESTERN AVENUE, CHICAGO 20, ILLINOIS Phone HEmlock 4-1000



New Model 60 GOLF BALL WASHER

BIRDIE SAYS . . .
 . . . so **EASY** to use
 . . . so **SAFE**
 . . . so **CLEAN**

New, **BRISTLE** side scrubbers, improved impeller and other features make this favorite the easiest to use—the safest and **BEST** ball washer ever offered.

See our complete catalog of Golf Course Equipment at your distributor.



STANDARD MANUFACTURING CO. CEDAR FALLS, IOWA

Are recipes costed and records kept up-to-date?

Are meats roasted at low temperatures?

What happens to leftovers?

Why are there leftovers?

Do your employees know what is expected of them?

Have you given them written instructions governing hours of work, handling of equipment, safety precautions, responsibilities and duties?

Have you set up production schedules for all items and for all employees?

What is being done in the way of employee training, both pre-service and in-service?

Lyons Puts on Course Maintenance Night Demonstration at Firestone

Wm. Lyons, supt. Firestone CC, Akron, O., and his staff presented a demonstration of night course maintenance to 100 Northern Ohio GCSA members and club officials with such success that many observers left convinced they'd seen a preview of a "things to come" program at busy courses.

The ingenious Lyons and his men put on their show with lighting provided

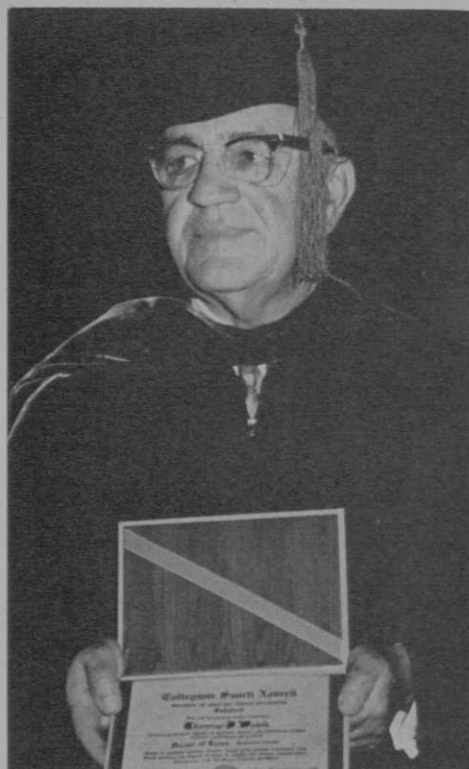
by tractors and pick-up trucks. The work consisted of fairway mowing, spraying and fertilizing and greens and apron mowing and spraying with fungicides.

There has been fairway night mowing at intervals, especially at major championships, for years. The first instance of after-dark fairway mowing that veterans recall, was that at Winged Foot (NY Met dist.) during the 1929 National Open. But Lyons' program at Firestone was an historic initial complete treatment of fairways and greens areas under lights.

Lyons believes that night maintenance work will become standard practice because of heavy traffic and early starting time of play at many public and semi-private courses and even at private clubs where women's play is heavy during morning hours.

It is the Firestone supt's. observation that work in the cool of the nights is more comfortable and safer for course employees. Even if premium wages are paid it could be more economical.

Lighter dew of early night permits good clean jobs of mowing, says Lyons. He adds that there is some foundation for the opinion that night maintenance may reduce disease attacks.



Tom Walsh

... call him doctor

Chicago Women's College Awards L.L.D. Degree to Tom Walsh

Thomas J. Walsh, onetime president of the PGA and long active in its activities on a local, sectional and national scale, became, as far as is known, the first professional in the U. S. to receive an honorary doctor of law degree, when St. Xavier College in Chicago awarded him an L.L.D. in August.

Tom was recognized by the women's college for his tireless fund raising activity in its behalf over the last 10 years. The degree was presented by Sister Mary Josetta, R.S.M., pres. of the college, at a commencement ceremony.

A member of a well known golfing family, Walsh has been connected with the game for more than 50 years. He started as a caddie and then progressed to professional and finally became a club builder and owner. He built Westgate Valley CC, on Chicago's southside, about 30 years ago and has been associated with that club ever since. He also is a part owner of Hickory Hills in Chicago.



AUGUSTINE ASCENDING ELM THE GROWTH PATTERN makes it AN IDEAL TREE for GOLF COURSES

Hundreds of Clubs have had outstanding success when planting for specific purpose:

*Traffic control . . . to define fairways and encourage golfers to play in their own fairways

*Definition of greens

*Shade

*Beautification of the course

CONVENIENCE: A magnificent tree whose columnar shape tends to minimize the difficulties of making shots under or around it. Non-surface rooting habit permits grass to grow freely right to trunk base. This elm is practically seedless which prevents springtime litter. Little pruning is required. Transplanting can be done easily and without setback.

BEAUTY: Majestic, vertical form is distinctively architectural. Large-leaved, rich green foliage provides ample shade, but the tree's unique structure promotes a thick lawn beneath by permitting the sun to reach the grass more hours per day.

STRENGTH: Uplanted branches sturdily withstand wind and weather; deep, down-growing roots provide firm anchorage; vigorous resistance to fungus or virus disease and to drought encourages healthy growth.

ADAPTABILITY: Compact yet graceful contour, and dependable uniformity make the Augustine Ascending Elm ideal for matched landscaping effects as well as for stately specimen plantings. Narrow, upright shape permits close planting for windbreaks or enclosures, as well as practical for lining fairways and setting off greens.

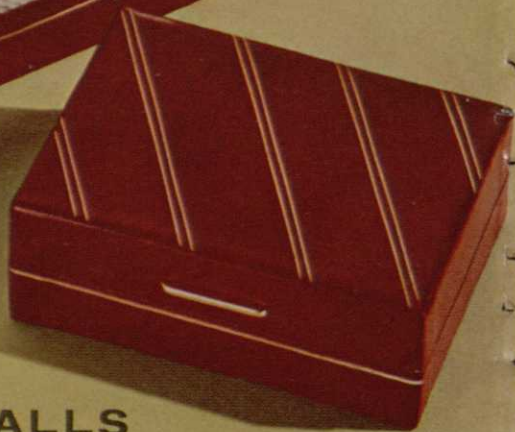
RAPID GROWTH: Just 5 years from sapling to tree. Liners, as well, ready now.



Write For Special Offer
Quotations to Golf Clubs

**Augustine Ascending
Elm Associates, Inc.**

932 E. 50th St.,
Chicago 15, Ill.



ACUSHNET GOLF BALLS
SOLD THE WORLD OVER THRU GOLF COURSE PRO SHOPS ONLY