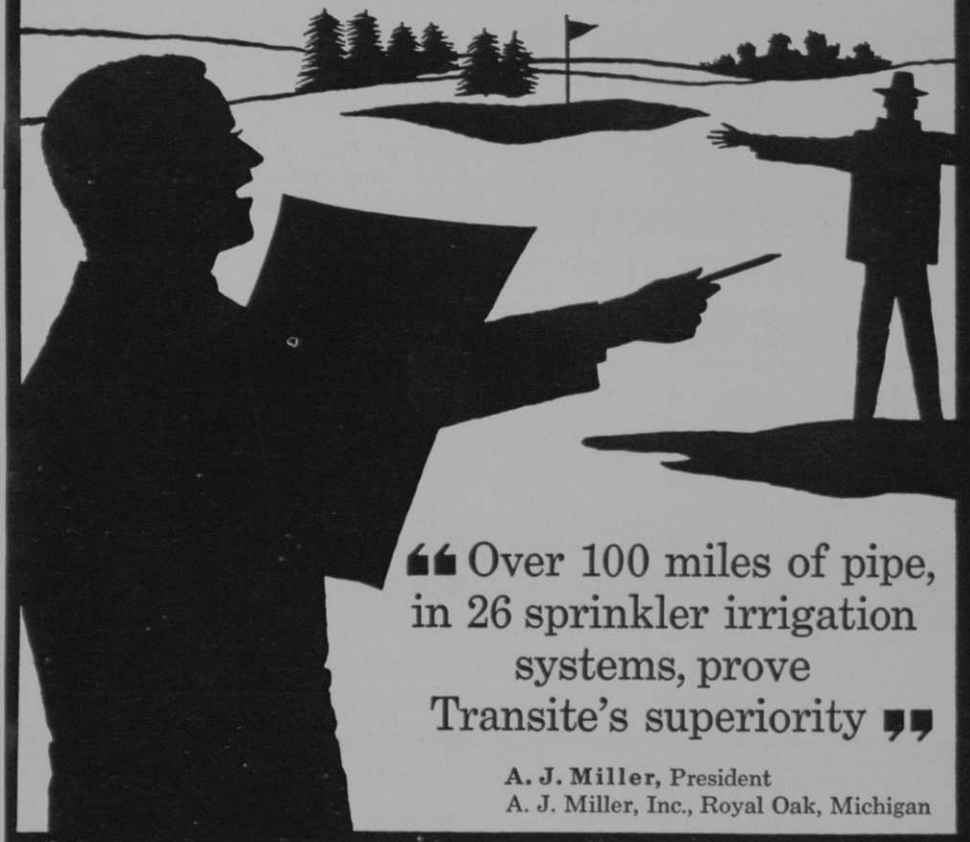


A golf course designer from Michigan reports:



“Over 100 miles of pipe,  
in 26 sprinkler irrigation  
systems, prove  
Transite’s superiority”

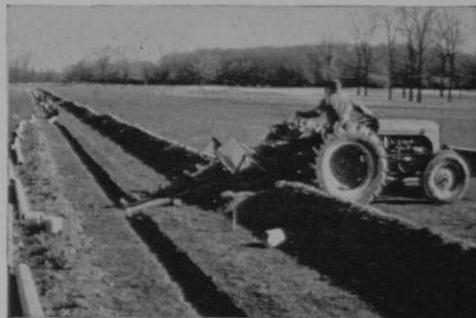
A. J. Miller, President  
A. J. Miller, Inc., Royal Oak, Michigan



“We’ve had a great deal of experience with Transite Pipe in golf course sprinkler irrigation systems . . . as a matter of fact, over 528,000 feet of experience. Our superintendents and installers

prefer Transite because it is not fragile and therefore can be handled in a normal manner. Its light weight and simple coupling method are also appreciated. And, with Transite, we never have to worry about reduced carrying capacity over the years due to internal corrosion. The variety of water supplies we have to deal with makes this of prime importance. Judging from the reports received from satisfied customers, I’d say that Transite has performed as well for them as it has for us.”

For the whole Transite® story, write Johns-Manville, Box 62, G-10, New York 16, N. Y. In Canada: Port Credit, Ontario. Cable address: Johnmanvil.



JOHNS-MANVILLE 



## FREE SPRINKLER PLAN SERVICE

**Save time and money**—with Thompson free sprinkler system plans. Includes layout, specifications, and equipment cost.

**Fifty years'** experience make Thompson the accepted leader. A complete line of precision-engineered equipment means lower installation costs, easier maintenance, savings in water.

Write for "Plans Guide"



POP-UP  
HEADS



UNDER  
GROUND  
ROTOR



AUTOMATIC  
CONTROL

**Thompson Manufacturing Company**  
2251 East Seventh Street  
Los Angeles 23, California

apartment buildings and motel... Part of the course will be converted to a Par 3 by Merriam... Cedarbrook has bought other property with proceeds of sale and will start work on a new course next spring... To prevent damage by carts to tees, Charles Christiansen has had his supts. at Denver public courses rope off tees, so that it's almost impossible to bring carts onto them... Morton Sunshine has been appointed executive director of Doral CC, new Miami, Fla. golf resort... Alma G.C. in San Jose, a lighted Par 31, to be opened in mid-November... Besides course there is a 35-tee range and 18-hole miniature in a Japanese tea garden setting.

Consolidated Activities, Livingston, N. J., leases Blue Elms CC, Florham Park, N.J., and changes its name to Florham CC... Consolidated Activities operates bowling alleys and is getting into golf... \$10 annual dues controls membership... Members and their guests then pay playing fees... Also has family and company membership arrangements... Bernard Kruth, Florham CC pres... Tom Zimich is course supt.

Isn't there something that can be done

# SOLVE all your TURF PROBLEMS!

## SAVE up to 25%

WE SHIP DIRECT

a specialized line of

- LIQUID FERTILIZERS
- HERBICIDES
- FUNGICIDES
- INSECTICIDES
- WETTING AGENTS

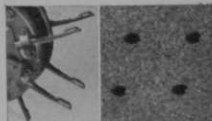
PROVEN SATISFACTION since 1939

write for FREE 1962 catalogue!

**American Liquid Fertilizer Co., Inc., and Rokeby Chemical Co.**  
Marietta, Ohio • P. O. Box 267 • Phone: FR 3-1394



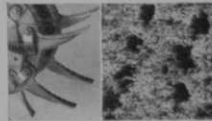
**Controlled  
year 'round  
aeration with  
Ryan quick  
change Tines.**



**1. Spring coring**



**2. Summer slicing**



**3. Fall renovating**

## **Ryan Renovaire delivers exclusive true contour aeration**

*...builds and maintains better turf at lower cost*

**STUDY THE PICTURE:** it shows how the Renovaire's individually suspended wheel pairs plus individual weighting trays give full penetration of tines and blades over undulating turf, thus reach the spots that will benefit most from aerating, slicing and thinning, or complete renovating!

With this one unit, you're set to do complete renovating jobs (and that means saving the cost of annual re-sodding) . . . to slice and thin choked turf . . . and to aerate turf for better fertilizer and moisture retention, overall better growth and appear-

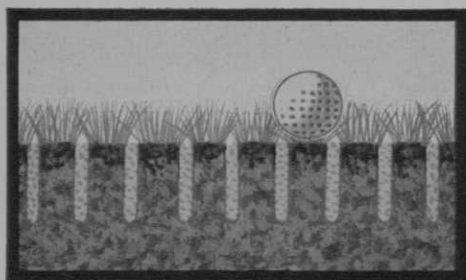
ance. Specially designed tines and blades for each of these jobs are made of genuine agricultural tool steel. The **RENOVAIRE** hitches to any tractor, works at speeds up to 10 mph to cover big areas fast. It's available in the 8' Monarch (shown) and in the 4½' Chief.

Whether turf building and maintenance is 10% or 100% of your job, a Renovaire will help you get healthier, better looking turf at lower cost. Get full performance details and specifications today from your Ryan distributor, or write:



**LANDSCAPING EQUIPMENT  
COMPANY**

871 Edgerton Street, St. Paul 1, Minnesota



# PERMANENT AERATION comes in a bag

After you aerate your tees and greens, make your aeration stick by spreading Terra-Lite vermiculite. The fine granules of vermiculite flow readily into the aeration holes. There the granules stay—permanently—keeping the soil springy, retaining water and feeding it to the grass roots as they demand it. Terra-Lite is permanent because it's mineral . . . doesn't rot or decompose. And it works!



*Harry E. Sanborn, Dartmouth CC in Hanover, N.H., says, "Terra-Lite held my greens during a severe drought which restricted watering for a 3-week period last year."*

*Edward Packer, Wyoming GC, Cincinnati, states, "Tees I rebuilt with Terra-Lite hold moisture better and require less attention."*

*For complete application information, mail the coupon below.*

## TERRA-LITE

DIVISION

ZONOLITE COMPANY  
Department G-101  
135 S. LaSalle Street  
Chicago 3, Illinois

Gentlemen: Please send me complete information about how to use Terra-Lite for best results.

Name \_\_\_\_\_

Golf Course \_\_\_\_\_

Address \_\_\_\_\_

City \_\_\_\_\_

State \_\_\_\_\_

to make the Walker Cup event something like a contest? . . . The latest 11 to 1 U.S. victory (17 out of 18 Walker Cup engagements for U.S.) indicated that the matches as now set up are not a sporting event of really international standard . . . Maybe commonwealth selection of British team might present stronger competition.

Ben Danforth, sports columnist, Albany, N.Y. Knickerbocker News, lauds Albany district pros for their Junior golf programs . . . Says the pros are developing kid golfers faster than courses are being provided on which the kids can play . . . Start building Seminole Lake G&CC 18 at St. Petersburg, Fla . . . Joe Putnam is pres., Seminole Lake Co., Inc . . . Chick Adams designed and is building the course..

Shady Grove G&CC, Gaithersburg, Md., has a cute stunt for Ladies Days . . . Regular flags on greens are replaced by pink flags trimmed with black lace . . . Sam Eig is pres of Shady Grove . . . Clarence Doser is pro . . . You know what a shy guy Clarence is . . . He probably blushes when he see the Ladies Day flags on his course . . .

Saratoga Springs, N.Y. plans to open

## Your Problem: LEAVES & GRASS CLIPPINGS Your Answer:

The  
**GOOD  
ROADS**

**MULCH-VAC  
SWEEPER (B25)**



Towed-type Vacuums,  
mulches, spreads,  
or collects.  
6' 5" path.  
Send for literature.

Manufacturers of Snow Plows, Road Spreaders, Leaf & Litter Equipment

*Good Roads*

**GOOD ROADS MACHINERY CORPORATION**  
MINERVA, OHIO

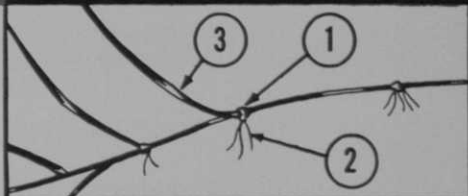


**NOW**

**SHIPPED AIR FREIGHT  
FOR PLANTING  
SAME DAY  
ANYWHERE IN THE U.S.A.**

**WARREN'S**  
*Creeping Bent*  
**STOLONS**

*Warren's Stolons* like *Warren's Sod*, are unconditionally guaranteed to be pure in strain, for perfect texture and uniformity of color.



**A WARREN CREEPING BENT STOLON (1) Node, (2) New Roots, (3) New Bent Plant — Presto — a perfect green, a perfect putting surface.**

**WARREN RESEARCH**  
plus **CONTROLLED QUALITY-GROWING**  
gives you more fine turf per dollar.

Every bag of Warren's Stolons brings you more nodes per bag . . . with a minimum of soil. You pay only for growth potential . . . save on freight and get the very finest bent grass Stolons.

**STOLONS:** Toronto (C-15), Cohansey (C-7), Washington (C-50), Pennlu (10-37-4).

**SOD:** Washington (C-50) Bent, Toronto (C-15) Bent, Merion and Kentucky Bluegrass, Fescue and Meyer Zoysia.

Shipped fresh, with our Guarantee of Purity, plus the Illinois Dept. of Agriculture Certificate of Inspection.

Ask for details on WARREN'S STOLONS and WARREN'S SOD for the most beautiful, hardy and vigorous greens . . . provided by Warren's modern scientific turf research and development programs.

*Warren's*  
**TURF NURSERY**

8400 West 111th Street, Palos Park, Illinois  
(a Chicago suburb)  
Phone: Gibson 8-7200



**Divided foundation beds enable Warren to guarantee pure strains in stolons.**



**Field sterilization prevents poa annua, bent mixtures; kills weed seeds. De-seeding (done in spring) removes seed-heads, prevents cross-pollination, insuring purity of strain.**

# Tread softly...mow swiftly!

*Pamper your fairways with International®  
power-weight balanced tractors . . .*

Famous International tractor built-in brawn gives a bonus value important to golf courses. Balanced power-weight ratio assures superior pull-power without wheel spin . . . plus stability to tread lightly on turf.

Only International offers such a wide range of power models to let you match your job requirements and your budget exactly. Your lowest-cost power buy for all-around utility is the 13.4 hp\* International Cub® Lo-Boy® . . . power to do many jobs as well as rigs costing up to \$1,000 more. For heavy-duty, there's the 61 hp\* I-460, smooth 6-cylinder power that's efficient and economical. Prefer Diesel fuel? There are three Internationals available, from 35 to 61 hp\*.

Special tractor options speed operations. A 47 hp\* International 340

**Three-point hitch** lets you hitch and switch rear-mounted equipment such as this turf aerator

with Torque Amplifier drive, for example, is ideal for hilly courses. The operator can boost pull-power on steep grades, *on-the-go*, without shifting or declutching, to protect turf against damage from wheel spin.

Get budget-planning help for 1962. Write for full-line catalog: International Harvester Co., Dept. G-10, Box 7333, Chicago 80, Illinois.

*\*Maximum engine hp at standard conditions.*



**INTERNATIONAL HARVESTER**

quickly, and operate it with precision hydraulic Hydra-Touch control.





▼ **Cut costs on every job** with a 13.4 hp\* Cub Lo-Boy. Available with equipment for every type of work. ▼

▲ **Mow swiftly** with 7 or 9-gang reel mower and 47 hp\* I-340, and keep it up for years to come with this dependable, economical rig.

▼ **Maintain clubhouse grounds** and small areas with a 7 hp Cub Cadet, today's most advanced lawn and garden tractor. ▼



*Plan now to*  
**Attend the**  
**33rd INTERNATIONAL**  
**TURFGRASS CONFERENCE**  
**AND SHOW**

Deauville Hotel

MIAMI BEACH, FLORIDA

January 24—February 2, 1962

See and participate in the:

**EDUCATIONAL CONFERENCE**

Leading speakers on golf turf management, research, and operations.

**"GREATEST SHOW IN TURF"**

Huge exhibit of turf equipment and supplies, representing the entire turf-grass industry.

**GREEN CHAIRMEN'S PROGRAM**

A special luncheon and forum.

**LADIES' PROGRAM**

Gay, entertaining activities.

**SOD PRODUCERS' PROGRAM**

Luncheon and special program.

**SOD NURSERY-GOLF COURSE TOUR**

Including a he-man Bar-B-Que.

**ANNUAL GCSAA GOLF TOURNEY**

Guest and exhibitor flights too.

*For more information write to:*

**GOLF COURSE SUPERINTENDENTS**  
**ASSOCIATION OF AMERICA**

P. O. Box 1385

Jacksonville Beach, Florida

its new 9-hole course May 30, 1962... The Saratoga spa also is to have Par 3 course, says asst. dir. Peter Drury... Have you noticed that quite a few of the courses at the "senior citizen" real estate developments are 9 holes but usually 9 very good holes?... Vito (Red) Gaeta, asst. to pro Harry Dee at Montclair (N.J.) CC, to be pro at Bamm Hollow CC, Middletown, N.J., when the new club opens... Gaeta selected from more than 40 applicants.

Renee Powell, 15-year-old daughter of Bill Powell, who owns Clearview course on the edge of East Canton, O., recently defended her Sixth City tournament title in Cleveland and her Rubber City Women's Open championship at Akron... She was subject of a piece in Ebony, a Negro magazine... Princeton (W. Va.) Elks buy Mercer County CC, 9-hole club... Charles Walk is pro-mgr.

L. E. (Bobo) Roger, Jr., named pro at Cabarrus CC, Concord, N.C. ... Expect to have new private club 18 near Clifton Springs, N.Y., in play next May... Dr. Richard Garnish, Lyons, N.Y., heads group building the club... Three Park Forest (Ill.) teenage boys got 650 adults in the Chicago suburb to sign petition requesting village trustees to build a golf course in the community.

Kimberton CC being built for group headed by Robt. Hayes, Narberth, Pa... George Fazio designed the course... Abbeville (Ala.) Herald cooperates with group headed by Victor Potts, John Lindsey and Noel Dowling by running coupon in paper asking for names of local residents willing to participate in establishing golf course.

Willard G. Wilkinson designing par 3 lighted 9 for Simmons-Cannon Development Co., 198 S. King St., Honolulu... It will be feature of the Pacific Palisades residential development. . . Lighted par 3 and range also to be built at Kaneohe... Country Squire motel being built by Robert O. Davis and Robert C. Smith of Eugene, Ore., to have a Par 3 course.

Hillcrest CC, Bartlesville, Okla. in \$864,000 clubhouse and course improvement program... Lakeshore C&CC plans to build 18 at Haworth, N. J. . . . Open Runaway Bay CC and hotel at Ocho Rios, Jamaica... Cedarwood GC, Charlotte N. C., semi-private 18, to open next summer... It is owned by A. H. Guion & Co. . . . Ellis Maples is architect... Forrest Wahl, Georgetown, O., RFD 2,



building 9 holes . . . Denton (Tex.) CC opens 9-hole course . . . Old course was closed during World War II . . . Grant Messenger restored Denton's front 9.

Ed Seymour, driving force of Phenix City (Ala.) Junior C of C Lakewood GC 18, deserves credit for marshalling manpower, equipment and material that converted a jungle into what's going to be a fine course . . . Lakewood should be in good playing condition next spring . . . Callup (N. M.) recreation committee to build all-grass muny course.

Begin building 18-hole course of MacLadsbrae CC on Dr. John MacAllister's farm at Keene, N. H. . . . To be private club with holding company being Horation Park Associates, Inc. . . . Dade County (Miami), Fla. county mgr., Irving McNayr proposes building 9-hole courses at Greynolds Park and at Haulover Beach in NE corner of county . . . Ponty-Fenmore Co., developers, Los Angeles, have bought 600 acres in West Simi Valley and will build an 18-hole course and 1,200 homes.

Vieques Island, 10 miles off SE end of Puerto Rico mainland, to have 18 and luxury 100-room hotel built by Woolworth interests . . . Leo Fraser, pres. Atlantic City CC, Northfield, N. J. and pres. of Philadelphia section PGA, heads a group that will build a course near Mays Landing, N. J. . . . Capitol Hill CC, headed by T. Leland Willis, a CPA, plans to build 9, clubhouse, pool, etc., at Norbeck in suburban Washington, D. C. . . . Play on course restricted to men . . . Salem Hills CC, Northville, Mich., 18 owned by Hiram F. Godwin & Son, Detroit, and designed by Bruce Matthews, to open in spring.

To begin building Oak Knolls 18 soon on new community development in Tehachapi, Calif. . . . Robert S. Morton is pres. Pacific-Atlantic Properties, developer of Oak Knoll . . . Theodore G. Robinson is designer and builder of the course . . . Corpus Christi (Tex.) CC selling present 18 on 89.6 acres and building course designed by Ralph Plummer on club's 230 acre new location.

South Bend (Ind.) Park Dept. to build new 18, the city's second muny course . . . Mirror high in a tree at 180 yd. 8th at Maplecrest CC, Goshen, Ind., gives players on tee a view of green on blind hole . . . Harry Lamm and Archie and Alton Whitley open their 9-hole Long Range GC at Wilson, N. C. . . . Open Dun



## AUGUSTINE ASCENDING ELM THE GROWTH PATTERN makes it AN IDEAL TREE for GOLF COURSES

*Hundreds of Clubs have had outstanding success when planting for specific purpose:*

\*Traffic control . . . to define fairways and encourage golfers to play in their own fairways

\*Definition of greens

\*Shade

\*Beautification of the course

**CONVENIENCE:** A magnificent tree whose columnar shape tends to minimize the difficulties of making shots under or around it. Non-surface rooting habit permits grass to grow freely right to trunk base. This elm is practically seedless which prevents springtime litter. Little pruning is required. Transplanting can be done easily and without setback.

**BEAUTY:** Majestic, vertical form is distinctively architectural. Large-leaved, rich green foliage provides ample shade, but the tree's unique structure promotes a thick lawn beneath by permitting the sun to reach the grass more hours per day.

**STRENGTH:** Uplanted branches sturdily withstand wind and weather; deep, down-growing roots provide firm anchorage; vigorous resistance to fungus or virus disease and to drought encourages healthy growth.

**ADAPTABILITY:** Compact yet graceful contour, and dependable uniformity make the Augustine Ascending Elm ideal for matched landscaping effects as well as for stately specimen plantings. Narrow, upright shape permits close planting for windbreaks or enclosures, as well as practical for lining fairways and setting off greens.

**RAPID GROWTH:** Just 5 years from sapling to tree. Liners, as well, ready now.



Write For Special Offer  
Quotations to Golf Clubs

**Augustine Ascending  
Elm Associates, Inc.**

932 E. 50th St.,  
Chicago 15, Ill.

# Make Top-Soil Out of Sub-Soil

by working in

## ***Hyper-Humus***

### **SURFACE COMPOSTED PEAT**

**The Organic Soil Improver**

You can have velvet greens in spite of soil handicaps. Let us show you how raw sub-soil can be transformed into fertile top-soil for less than the cost of hauled-in top-soil.

Write us for Special Bulletin — "Make Top-Soil Out of Sub-Soil"

Ask your supply dealer for **HYPER-HUMUS**

**HYPER-HUMUS COMPANY**

Box G

Newton, New Jersey



Rovin CC 18 at Northville, Mich. . . . Bruce Matthews designed it . . . Harold Edwards and Richard Kenzie of Livonia, Mich., and others financed the semi-public Dun Rovin.

Dick Fry, pro at Lake Chabot, Oakland, Calif., municipal course, says that one day he counted 163 calls that came in after all starting times had been filled . . . If each call represented a foursome that means 652 didn't get to play.

Fire destroys \$750,000 clubhouse at Elm Brooks CC, Okaboji, Ia. . . . Owner C. Bascom Slemple plans to rebuild . . . During the fire, vandals drove cars on the course and stole golf balls, clubs, bags, etc. . . . Sullivan County, N. Y., Catskill resort area, has 20 courses within 30 mile radius of Monticello, county seat . . . Bud Turner, supt. of Hesperia CC, Southern Calif. development, since 1957, now supt. at Tropicana hotel course, Las Vegas.

Alfred L. Kaskel, pres. Carol Management Corp., New York City., and builder of Carillon hotel, Miami, is building Doral CC with two full 18s, a Par 3, 306-room lodge and surrounding community development on 1,200 acres on NW 48th St., Miami . . . First course to open in Dec.

## **BOB DUNNING GOLF**

## **COMPLETE SERVICE**

BOB DUNNING AND ASSOCIATES CAN FURNISH:

- Golf Course Design and Construction
- Putting Surface Design with Character
- More Interesting Golf Through Design
- Design for Semi and Automatic Sprinkling Systems
- Mechanical Analysis of Soils for Putting Greens
- Greens with Built-In Savings
- Construction with Consideration to the Future
- Winter construction & consultant service available for south and southwest.

\*\*\*\*\* GCSA Conference — TULSA - 1964 \*\*\*\*\*

1402-12 S. LEWIS  
TULSA 4, OKLAHOMA

**BOB DUNNING, INC.**  
Suppliers To Golf Courses

WEbster 6-3660  
or 9-3206