

New
Cooper



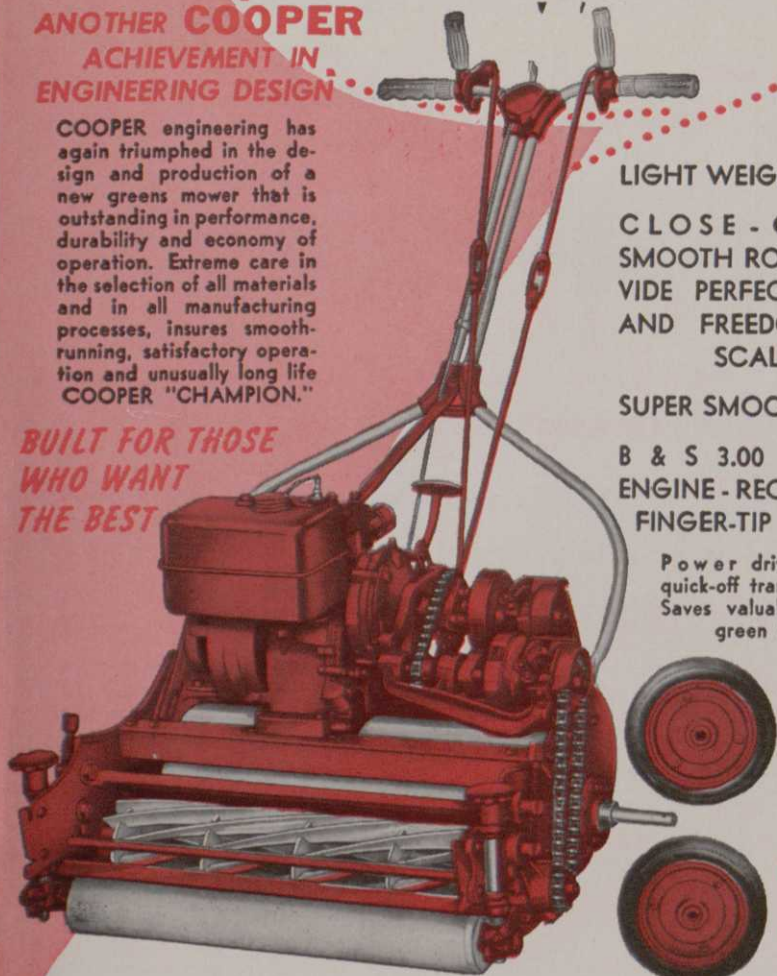
Champion
GREENS MOWER

FULL 21" CUT

**ANOTHER COOPER
ACHIEVEMENT IN
ENGINEERING DESIGN**

COOPER engineering has again triumphed in the design and production of a new greens mower that is outstanding in performance, durability and economy of operation. Extreme care in the selection of all materials and in all manufacturing processes, insures smooth-running, satisfactory operation and unusually long life COOPER "CHAMPION."

**BUILT FOR THOSE
WHO WANT
THE BEST**



LIGHT WEIGHT

**CLOSE - COUPLED
SMOOTH ROLLERS - PRO-
VIDE PERFECT BALANCE
AND FREEDOM FROM
SCALPING**

SUPER SMOOTH CUT

**B & S 3.00 HP 4-CYCLE
ENGINE - RECOIL STARTER
FINGER-TIP CONTROLS**

Power driven quick-on -
quick-off transport wheels -
Saves valuable time from
green to green.



Write for
literature and
detailed
specifications

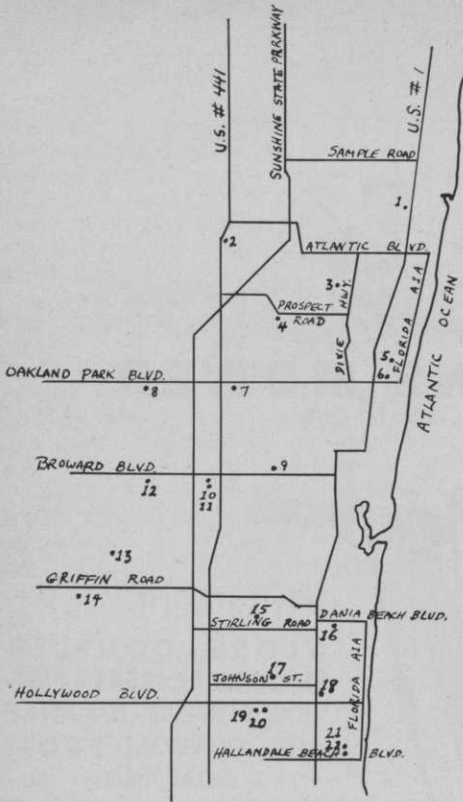
COOPER MANUFACTURING CO. 409-411 South First Ave.
Marshalltown, Iowa., U.S.A.

Golfingest County in the Country!

You can hop from one course in Broward County (Fla.) to any of 21 others in 40 minutes or less. . . There are so many golf layouts here you wonder where 330,000 residents can find room to live

By BOB LYNCH

Photos by Bill Bates



COURSE KEY

- | | |
|-------------------------|-----------------------------|
| 1-Pompano Beach CC | 12-Plantation GC |
| 2-Margate GC | 13-Rolling Hills CC |
| 3-Palm Aire CC | 14-Cooper Colony CC |
| 4-Tamarac G&CC | 15-Stirling GC |
| 5-Coral Ridge CC | 16-Dania CC |
| 6-American Golfers | 17-Sunset GC |
| 7-Lauderdale Lakes CC | 18-Hollywood Beach Hotel CC |
| 8-Sunrise CC | 19-20-Orange Brook GC |
| 9-Par 3 GC | 21-22-Diplomat CC |
| 10-11-Ft. Lauderdale CC | |

BROWARD COUNTY is Florida's golf mecca!

Visitors to Florida become more and more amazed each year at the state's rapid golf growth. When they're asked to choose an area with the best facilities, the smartest surroundings and the most ideal playing locations, the vote likely as not goes to Broward County.

Ten years ago tourists found just six courses to satisfy their needs — the Stirling GC in Dania, the current Ft. Lauderdale CC South course, the first 18 holes of a present 36-hole layout at Hollywood's Orange Brook CC, Sunset GC, in Hollywood, Ft. Lauderdale's Plantation GC and the Hollywood Beach Hotel's picturesque 18-hole course.

This month there will be 22 links ready for an every growing tourist population and a rapidly expanding residential figure.

There are 13 standard layouts with pars of 70, 71 or 72, five 9-hole courses and four other 18-hole locations whose pars range from 54 to 60. A total of 351 golf holes are to be found in Broward County. The population is around 330,000 and an influx of winter pleasure-seekers raises the total to well above a million persons annually.

Mushrooming from Ft. Lauderdale in the early 1950s, the construction calendar
(Continued on page 78)

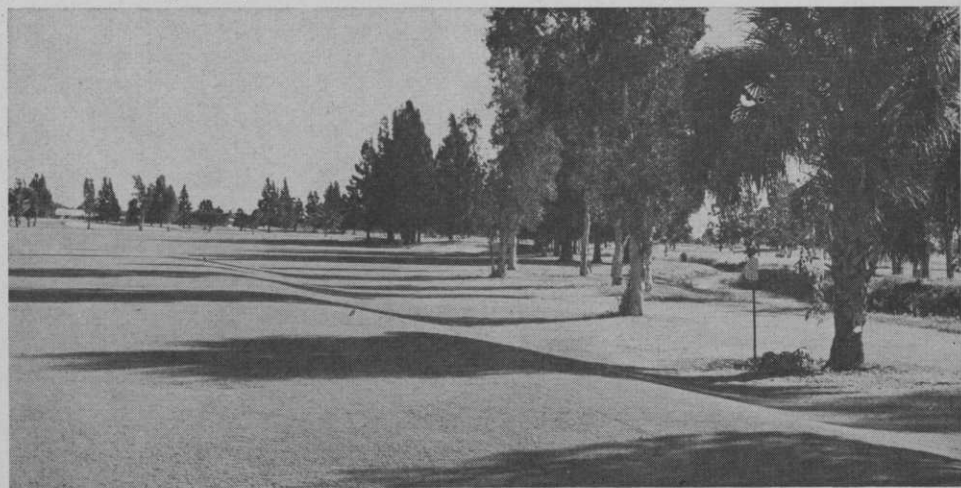


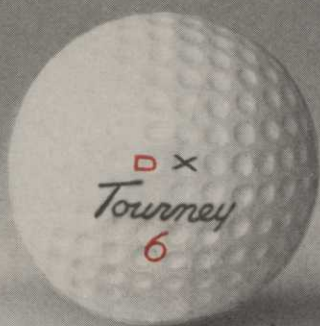
Many players say 16th hole at Coral Ridge CC in Ft. Lauderdale is one of the prettiest they've seen. But that's only after they've escaped safely across the water in front of it.



(Above) Players who stray off this fairway at Plantation GC in Ft. Lauderdale find themselves in the bullrushes. (Left) 12th green at Coral Ridge has a bi-level contour.

Pine trees guard right side of 6th fairway at Plantation GC. Healthy slice means trouble here.





D X

Tourney

6

THE 1961 **D**X TOURNEY

makes all other golf balls out of date

From the greatest name in golf comes the greatest ball in golf!

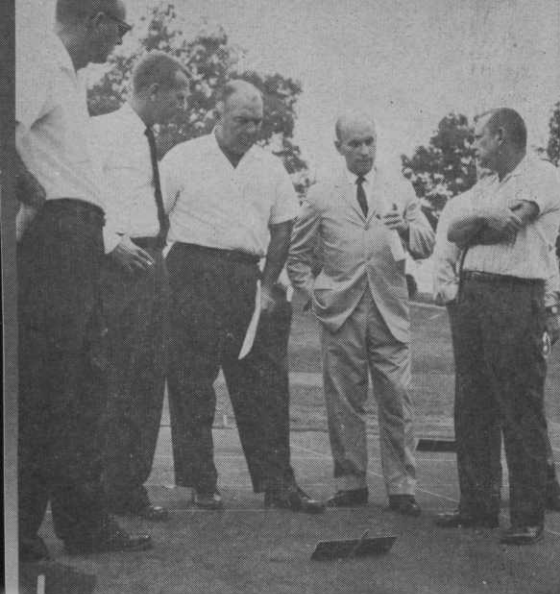
Until now, championship performance and outstanding durability did not go together in golf balls. You could have one or the other, but not both. The new MacGregor DX Tourney changes all that.

MacGregor's 1961 DX Tourney successfully combines, for the first time ever, fine performance and durability. The secret is in the new Permolect cover and Resilicote finish. Together they form the most scuff and abrasion resistant golf ball covering yet developed.

As soon as the word gets around, you'll be getting lots of calls for the new DX Tourney. Better stock up now . . . supply will be limited.

MacGregor DX Tourneys come packed in profitable new four-ball tray that sells for \$5.00. Dozen retails for \$14.75.





A perplexing problem is thrashed out by an agronomist and supts. at St. Louis meeting.

They Don't Hibernate

Supts. Keep Busy Making Rounds of Turf Meetings

Course supts., who are suspected by some of hibernating when the golf season is concluded, but in many cases work even harder than during the regular season, profitably spent part of their time last fall absorbing new ideas and more knowledge at clinics and conferences held in various sections of the country.

Typical of these were the field days held in St. Louis and at the University of Arizona in Tucson and the conferences staged by the Midwest GCSA at Olympia Fields (Ill.) CC, the University of Illinois in Urbana and the Texas Turfgrass Assn. at Texas A & M in College Station. Numerous supts. also were attracted to the meetings of the American Society of Agronomy held in Chicago.

At St. Louis, after viewing turf demonstrations and test plots at Al Linkogel's nursery, the supts. proceeded to Westwood CC where they inspected the Meyer Z-52 Zoysia, recently introduced as a fair-

way planting and the U-3 Bermuda, now being used as green collars. Speakers at the Westwood dinner included Wayne Allen of USGA, Mike Britton, Illinois U. plant pathologist, and F. W. Went of the Missouri Botanical Gardens.

The two-day Arizona conclave touched on a variety of subjects with specialized turf management being the topic that interested supts. most. Automatic sprinkling and aerating for better use of water and overseeding effects of rye grass were among the subjects discussed.

Imposing List of Speakers

The Midwest meeting, which has become an Olympia Fields fixture, presented an imposing roster of speakers and panelists. Ted Woehrle, new pres. of Midwest GCSA, gave an interesting account of the current trend in supts' salaries, which was the result of considerable polling on his part. Roger Thomas, Jim Holmes, Clarence White, Gabe Rawset, Bob Williams, Nels J. Johnson, Jim Watson, Harry Kaufman, C. E. Stewart and Charles Wilson covered the technical aspects. Frank Olivieri gave an enlightening talk on golf cars, and Warren Bidwell, host supt., collaborated with Ed Carter of the PGA in bringing persons attending the two-day meeting up to date on how the build-up for the 1961 PGA Championship, to be played at Olympia, is progressing. Rex McMorris of the National Golf Foundation brought the audience abreast of the newest statistical developments in golf and Paul Voykin borrowed from his artistry in telling how country club surroundings can be beautified.

Illinois university professors were much in evidence at the first conference of the Illinois Turfgrass Assn. Of particular interest to golf course people was a talk by C. Y. Arnold on understanding soils and another by S. A. Aldrich entitled, "What's in a Fertilizer Bag." New plantings, weed and disease control and a discussion of problems peculiar to turf in the Illinois area also were discussed.

15th Texas Conference

The 15th Texas Turf short course was a three-day affair at which experts from the southwest and southern states spoke. Predominant among them were Wayne Allen of the USGA green section; D. R. Thornton, R. D. Lewis and John Long, all of Texas A & M College; Gene C. Nutter, GCSA executive dir.; Verne Fish, Toro Mfg. Corp.; Jim Latham, Milwaukee Sewerage Commission; and J. E. Bussart, Velsicol Chemical Corp. On the second day of the meeting, panel discussions were held

Clubs Win Tax Fight

The fight by California golf associations and clubs to have their courses taxed as recreation and not business sites (Golfdom — July, p. 25 and Sept., p. 22, 1960) was successful. California voters favored the issue, embodied in Proposition 6, in the Nov. elections, 3,275,354 to 2,074,084

separately for those in interested in golf course management, parks, schools and cemeteries and the military.

At the four-day American Agronomy Society meeting, held in Chicago in Dec., several research men, well known to course super., appeared on the programs. They included Ralph Engel of Rutgers University, Victor B. Younger of UCLA, R. R. Davis of Wooster (O.) Experiment Station, Jim Watson of Toro, Jim Latham and Charles Wilson of Milwaukee Sewerage and O. J. Noer.

John G. Clock Re-Slated for USGA Presidency

John G. Clock, Long Beach, Calif., has been re-nominated for the presidency of the USGA. Others who are slated for offices for the coming year are: C. W. Benedict, White Plains, N. Y., and John W. Winters, Jr., Tulsa, vps; William Ward Foshay, New York, sec.; and Bernard H. Ridder, Jr., St. Paul, treas.

Re-nominated for the executive committee are: Fred Brand, Jr., Pittsburgh; William C. Chapin, Rochester, N. Y.; Harry L. Givan, Seattle; H. W. Hardin, St. Louis; Harold A. Moore, Chicago; Edwin R. Foley, San Francisco; Robert K. Howse, Wichita; and Henry H. Russell, Perrine, Fla. New executive committee nominees are Eugene S. Pulliam, Indianapolis, and Edward L. Emerson, Brookline, Mass.

Philip H. Strubing of Philadelphia has been re-nominated to be general counsel.

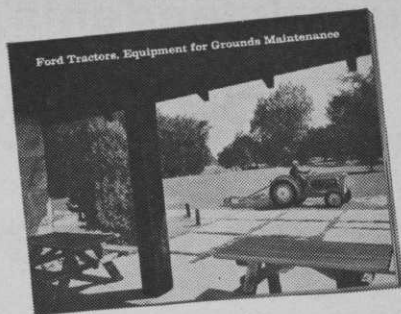
Election of officers and committeemen will be held in the Biltmore Hotel in New York, Jan. 28, when the USGA holds its 67th annual meeting.

Turf Meetings

Jan. 9-10 — Mid Atlantic GCSA, Lord Baltimore Hotel, Baltimore, Md.

Feb. 27-28 — Southern, Peabody Hotel, Memphis.

Mar. 27-29 — Wisconsin Turfgrass Assn., U. of Wisconsin, Madison.



Got your copy of Ford work tips?

Get the booklet *Ford Tractors and Equipment for Grounds Maintenance* from your Ford Tractor and Equipment dealer, or write Industrial Sales Department, Ford Motor Company, 2500 E. Maple Road, Birmingham, Michigan. You'll find money-saving information when your job problems involve ...

POWER—Utility, All-Purpose and Industrial Ford and Fordson tractors, gasoline or diesel.



DIGGING—Ford 10 ft., 12 ft. and 14 ft. backhoes; Sherman 10 ft. and 12 ft. backhoes.



MOWING—Choice of cutterbar mowers, 60" rotary cutters, 100" rotary cutters.

LOADING—Full line of hydraulic loaders with 1000 to 2500 lbs. rated capacity.



MAINTENANCE—Blades, dozers, dozens of other attachments add to Ford versatility. You see more Fords because they save more money!



Superintendents tell how:

Du Pont TERSAN[®] OM prevents in excellent condition, re



Note extensive snow mold damage in untreated apron at left. Green treated with Du Pont turf fungicides at right, is free of disease.

You can now get reliable snow mold protection, easily and economically, with one product—Du Pont “Tersan” OM.

Du Pont “Tersan” OM combines the recognized effectiveness of mercurial fungicides and “Tersan” 75 to control snow mold. It prevents other important fungus diseases too, such as brown patch and dollar spot.

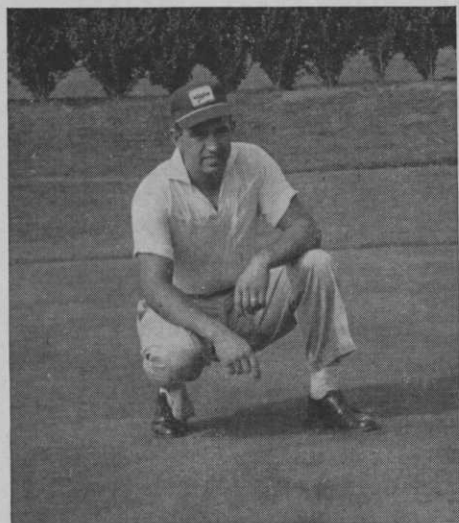
Du Pont “Tersan” OM comes in ready-

to-use 3-lb. containers which eliminate the need for weighing and tank-mixing, save time and labor. Also, there is a high safety factor for turf with “Tersan” OM—even when accidentally applied at somewhat over the recommended rates.

This winter, keep your greens disease-free and ready for early-season play. Stop snow mold with Du Pont “Tersan” OM. Order a supply from your dealer today.

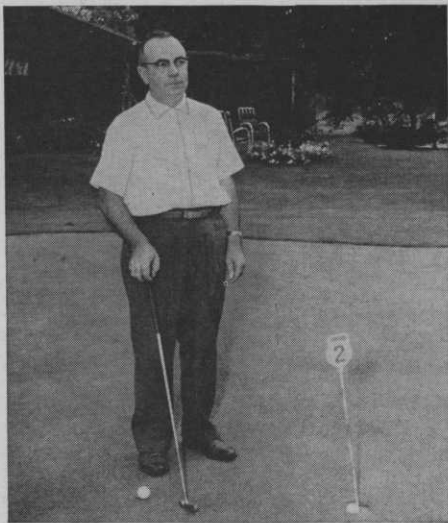
ts snow mold . . . keeps greens ady for early-season play

These superintendents report their results with "Tersan" OM



MR. ROBERT VIERA says: "I have used 'Tersan' OM on all my greens for the past two years for control of snow mold . . . with excellent results. Du Pont 'Tersan' OM gave me good control with no discoloration of the turf. During the first week of December, I used 8 oz. per 1,000 sq. ft. to get snow mold control."

*Mr. Robert Viera, Superintendent
Watertown Golf Club, Watertown, Conn.*



MR. W. E. UPDEGRAFF writes: "I would not think of going into the winter without using Du Pont 'Tersan' OM for protection against snow mold. I made two applications last November and, because of bad weather, did not make another application until April 1960. We have had no snow mold on our greens since we began using 'Tersan' OM, and, because of these excellent results, we shall continue to use it."

*Mr. W. E. Updegraff, Superintendent
Oak Park Country Club, Oak Park, Illinois*

**Now is the time to apply Du Pont Uramite®
fertilizer compound for good turf next spring**

*On all chemicals follow labeling
instructions and warnings carefully.*



REG. U. S. PAT. OFF.

BETTER THINGS FOR BETTER LIVING
... THROUGH CHEMISTRY

TERSAN® OM · TERSAN® 75 · SEMESAN® Turf Fungicide
turf fungicide turf fungicide

O. J. Noer's Turf Tips



1960 Roundup — II

Much Remains to be Learned about Herbicides

*Effects of Turf Reaction,
Temperature, Makeup of Soil and
Other Factors Must be
Considered in their Use*

RHODES grass scale has been bad on many greens in Florida. It has been very troublesome on Bermuda turf in Arizona and possibly elsewhere in the Southwest.

The damage puzzled some because they didn't suspect the cause. The overall off-color of the grass suggested need of nitrogen. The turf failed to respond following its use. Leaf spot or some other types of foliar disease was then thought to be the probable cause. Finally, Rhodes scale was diagnosed as the real culprit.

The best spot to find the small, puffy, cotton-like scale is on the grass stem at the axil of the leaf, i.e. where the leaf joins the stem. Infestation is apt to be bad in the longer grass on the apron or fringe around the edge of the green.

Parathion gives slightly better control of the scale but Malathion is preferred by most because it is less hazardous to humans. The Florida Ag. Experiment Station recommends that treatments extend well beyond the green area so players will not track infestation from the fringe area back on to the green. For those who use Para-

thion, a rate of 2 lbs., 15 per cent wettable powder plus 2 gals. summer oil in enough water to cover 5,000 sq. ft. is suggested. This combination is used twice. The third application is Parathion only. The suggested rate for Malathion is 4 lbs. of 20 per cent wettable powder with enough water to cover 5,000 sq. ft. Malathion also should be used three times. A three-week interval between applications is proposed for both materials.

Selective Herbicides?

Selective herbicides have been and will continue to be useful weed killing tools, but less widespread than some enthusiasts advocate. In theory their action is selective but under adverse conditions severe damage to turf grasses is possible and has occurred. Among the phenoxyacetic acid type herbicides, 2, 4-D is for broadleaf weeds, 2, 4, 5-T for clover. Newer ones include 2, 4, 5-TP (Silvex) in the states, and Compitox, an English preparation, in Canada. Chemically, Compitox (4-chloro-2-methyl-phenny) is a propionic acid. Both are advocated for the control of chickweed, yarrow, etc. Before their discovery,