

Du Pont turf fungicides greens players rave about

"Our greens were never better" . . . "They putt truer than ever before" . . . are some of the many compliments Mr. Homer Looney, Superintendent, Millburn Country Club, Overland, Kansas, receives. Mr. Looney tells how Du Pont Turf Products help him produce these greens.

"We apply 'Uramite' fertilizer compound at the rate of 10 pounds per thousand feet, spring and fall. It saves us time and money. Our greens have better color through the season . . . start off earlier and stay playable longer. The texture is marvelous, with greater density and improved resilience—the surface springs back when walked on. All this results from uniform nitrogen feeding provided by 'Uramite'.

"For disease control, we spray 'Tersan' 75 combined with 'Semesan' Turf Fungi-

cide once a week through the growing season. When conditions are particularly adverse, we make additional applications, but we have never had to spray more than twice a week. Before we started using 'Semesan' Turf Fungicide, dollar spot was a serious problem, but we are no longer bothered by this disease.

"Last year we tried 'Tersan' OM and found it fully effective. It also saves us time, because weighing is no longer necessary. We plan to expand our use of 'Tersan' OM in the future."

For excellent, long-range results, base your turf management program on Du Pont "Uramite" for uniform feeding of vital nitrogen and Du Pont turf fungicides for top year-round protection against disease. Order a supply from your dealer.

TERSAN 75—gives excellent control of dollar spot, brown patch, snow mold . . . helps keep greens ready for early-season play.

SEMESAN Turf Fungicide—a specially prepared mercurial composition for hard-to-control turf diseases. For broad spectrum protection, include with "Tersan" 75 in a combination application.

URAMITE—contains 38% nitrogen. Feeds slowly . . . keeps nitrogen at a proper level. Assures healthy, vigorous growth. Clean and odorless, too.

TERSAN OM—combines the effectiveness of "Tersan" 75 and organic mercury in a single fungicide. Eliminates tank mixing . . . saves time and labor. Comes in ready-to-use 3-lb. packages.

On all chemicals follow labeling instructions and warnings carefully.

SEMESAN® • **URAMITE**®
Fungicide fertilizer compound



BETTER THINGS FOR BETTER LIVING
. . . THROUGH CHEMISTRY

Keep Leather Grips Soft And Tacky



A new formula and applicator to keep leather grips soft, tacky, and playable in any and all conditions. Will not film-up on surface and become hard but will be absorbed and keep the grip wonderfully playable.

MAY BE USED FOR:

GOLF • SQUASH • TENNIS
BASEBALL • BADMINTON • BOWLING
ARCHERY • FOOTBALL

USUAL PRO DISCOUNT



CONTACT is the new way of giving you an old and proven formula, tested and backed by the world's largest manufacturer of leather golf and tennis grips. CONTACT is absorbed into the leather pores and renews the tacky feel without coating the grip. It may also be used on your golf glove. Smartly packaged in self selling display piece.

ABERDEEN PRODUCTS-A division of Lamkin Leather Co., 406 No. Aberdeen, Chicago 22, Ill.

New PGA President Is Veteran of 37 Years in the Game

Lou Strong, new pres. of the PGA, has been living golf for 37 years. For a fellow of 47 that amounts to practically lifelong devotion. A native of Champaign, Ill., Strong started caddying at 10, soon was



Lou Strong

working in the pro shop helping Parker Nall, the local professional, and thereafter never got very far away from a course.

Strong spent his high school days in Gulfport, Miss., where he competed in football, basketball and baseball. Upon graduation, he returned to Urbana, Ill., where he became an assistant pro at Urbana CC, working under Ralph Johnson. Three years later he was named head pro there. He held this position for 14 years, going to Park Ridge (Ill.) CC where he remained 11 years before George S.

May tapped him for the pro job at Tam O'Shanter CC in Niles, Ill. Late in 1960, Strong deserted Tam to take the headmaster's job at Oak Hill in Rochester, N. Y.

While at Park Ridge, Strong became interested in PGA promotional and organization work. He was elected sec.-treas. of the Illinois section and after several years in this position, was named Illinois vp of the national group. From 1955 until 1960, Strong served on several PGA committees. In 1958 he was elected vp of the national body and last fall was elevated to the presidency.

A gregarious fellow, Lou has first-name acquaintanceship with thousands of persons in the golf business. Not only has he shown himself to be a topnotch teacher and businessman, but an outstanding policy maker whose foresight and judgment repeatedly have been tested in recent years while the PGA has been enjoying perhaps its greatest growth. During the next two years about 5,000 members of the national group will be looking to Lou for guidance.

Strong has two daughters, Donna, 20, and Debbie, 10. His wife, Arlene, has long rated as one of the most popular of the "PGA wives."

The only Golf Equipment Recommended by
the Professional Golfers' Association



PGA RYDER CUP MODELS

with NEW PGA Contromatic Shafts

PGA Clubs have the time tested, True Temper Dynamic Pattern shaft, made from new Boron steel. This exclusive PGA Contromatic shaft gives extra "feel," extra power at point of impact. Amazing extra power is there without disturbing directional control. Choice of flexes. Whether buying for yourself or for resale you will profit from the exceptional design and value of PGA Clubs. PGA Equipment is fully guaranteed to give complete user satisfaction.

NEW SHAFT

Exclusive PGA Contromatic Shaft has lithe, lash-like action. Thinner wall construction at tip end of shaft provides more "feel," extra power.

PGA GOLF EQUIPMENT

Available only from America's leading Golf Professionals

Now available—a complete line of PGA Equipment including Woods, Irons, Golf Balls, Bags, Gloves, Head Covers, Umbrellas, Electric Cars, as well as Sportswear—including Caps, Hosiery, Shirts, Sweaters, Slacks, Rain Jackets, Windbreakers and Golf Shoes.



NATIONAL PGA DISTRIBUTORS

160 Essex St., Newark, Ohio

Grau's Answers to Turf Questions



Some Misconceptions Frequently Encountered

A misconception is an inaccurate understanding. Running through the hundreds of letters received by the Q & A dept., we run across numerous misconceptions. Some of these lead to rather sorry results.

One that is frequently encountered is: "... my soil is pH 7.8. Isn't that too high for bluegrass? What should I do to correct it?"

In some cases the questioner had applied sulfur to attempt to reduce the pH value and was asking what to do next. The fact is that seldom does soil pH become so high as to affect the growth of turfgrasses. Bluegrass grows well at pH 8.0 to 8.5 if it is supplied with a balanced nutrient diet. Bentgrass will grow well within a range of pH 4.5 to 8.5.

A high pH value may reduce the availability of certain nutrient elements such as iron, phosphorus and manganese. Then it becomes necessary to supply the critical elements rather than to attempt to lower the pH value of vast quantities of soil.

Another misconception occurs in relation to use of arsenicals for poa and crabgrass control. The questioner uses arsenicals and wonders why results are not forthcoming. A study of management practices reveals that the fertilizer program quite effectively nullifies the effects of the arsenic. It has been shown that low phosphorus increases effectiveness of arsenical treatments. Yet the turf in question receives regular treatments of phosphorus-bearing materials which build up the P level in the soil, practically insuring failure with arsenicals.

The error is particularly tragic in the case of new golf courses. Supts. at these places want desperately to keep poa from taking over, but at the same time unintentionally do some of the things that help insure a good crop of poa.

A third misconception has to do with the texture of topdressing. Hard greens, ball bounces, compaction, and poor water penetration are among the complaints. One look at the topdressing bin and the answer is clear. "Why do you use such fine-textured, silty topdressing?" The answer is, "Because it is so easy to apply and work into the grass." Granted that very fine (blow sand) topdressing is nice to handle, the trouble starts after a layer of this material is on the green. Water won't penetrate it, roots can't move through it and air is effectively prevented from moving into soil below. The finer the soil particles, the more effectively will it be compacted. Thus, the temporary advantage of "easy-to-handle" material effectively nullifies all other management practices designed to provide the best playing conditions at the lowest cost.

Topdressing mixtures must be of the same texture as, or slightly coarser than, the mixture in the green.

Mattei Heads Northeastern GCSA

Lawrence Mattei, Kingsboro CC, Gloversville, N. Y., has been re-elected pres. of the Northeastern GCSA for 1961. James K. Thomson is vp, Paul O'Leary is sec. and John Espey, treas.

U of M Graduates

Joseph Troll of University of Massachusetts reports that 21 supt. trainees will be graduated from the turf school's two-year course in June. Training includes at least six months of practical maintenance work, on which students are graded, plus regular classroom work.

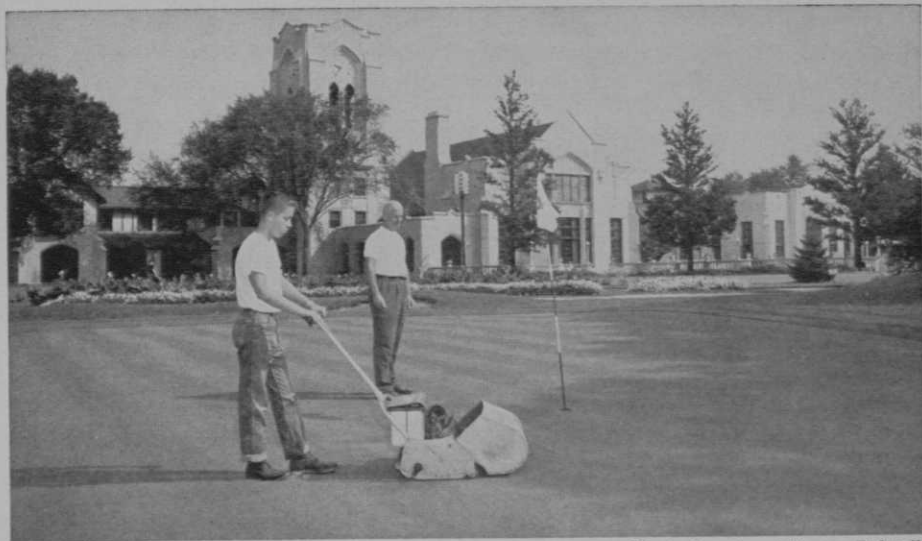


Photo Courtesy Warren Bidwell

The Switch to Electric Is On!!!

On golf courses from coast-to-coast West Point's battery-operated Lectro has proven to be "the new concept in greens mowing." Its day-to-day performance throughout the 1960 mowing season gives you every reason to plan with confidence to go Lectro in '61.

At Olympia Fields, where the 1961 PGA Championship will be held, July 27-30, Warren Bidwell has gone electric. When asked about the performance of his six Lectro Greens Mowers, he had this to say: "I am very pleased with my Lectros. They mow at least six greens on one charge of their batteries, then after overnight charging are ready to go again the next morning."

Like all users of the Lectros, Superintendent Bidwell approves of their push-button starting . . . their constant even power . . . their lack of smoke and fumes . . . and the low cost of their operation and their maintenance. Important point: the Lectro weighs only 185 lbs. and has no oscillating parts so is less of a source of compaction than any other power-driven greens mower available to turfgrass managers.

Vibrationless

Quiet

Dependable

Push-Button Starting

Low Maintenance Costs

For specifications and performance history write

West Point Products Corporation, West Point, Penna.

THE ANSWER TO YOUR CRABGRASS PROBLEM

CHIP-CAL

SPECIAL LOW-LIME CALCIUM ARSENATE

Outstanding Results

USED ON MANY
GOLF COURSES



- 1 STOPS CRABGRASS BEFORE IT GROWS!**
Chip-Cal keeps golf courses free of crabgrass by killing the seedling plants.
- 2 ONE TREATMENT LASTS FOR YEARS**
Up to five years' effectiveness reported. Follow-up treatments to maintain maximum control require only half rate.
- 3 APPLY SPRING OR FALL**
Early spring treatment stops crabgrass seedlings; fall application is equally effective to prevent crabgrass the following year.
- 4 CONTROLS OTHER TURF PESTS**
Also controls Chickweed, Poa annua and insect grubs in turf.
- 5 POWDER OR GRANULAR FORM**
Chip-Cal POWDER is applied dry or as a water-mixed spray. Chip-Cal GRANULAR is easily applied with any good fertilizer spreader.
- 6 WIDELY USED, PROVEN**
Chip-Cal has had wide commercial use and is backed by several years of research and testing by turf experts.

Use CHIP-CAL this Year!
Contact Your Supplier or Write:

CHIPMAN CHEMICAL
COMPANY

Dept. H., Bound Brook, N. J.

Happy Hunting with Smith

(Continued from page 42)

in the Ken Smith organization. Bill Bucher, 70, won the 1926 Excelsior Springs Invitation, 1928 K. C. Amateur and a number of club titles. Glennon Riley probably is Happy Hunting's top performer. A few years ago he was rated one of the finest players in the K. C. amateur ranks. Several other employees play to handicaps of around five on regulation courses.

Built of Stone

The original 40 acres on which the Happy Hunting clubhouse and the plant are located were owned by the grandfather of Cliff and Kenny Garrett, who work for Smith. The Smith home and plant are built of stone from an underlying ledge of limestone. About 500 tons went into construction of the two buildings.

The setting of the two buildings, by the way, is a little breathtaking. It is in the center of a onetime 220-acre farm and is surrounded by magnificent trees and shrubs. There are more than 500 walnut trees surrounding the plant and course and most of them are nearly 100 years old, their life expectancy.

Fort Knox Pro Project

(Continued from page 46)

representing permanent post personnel, the Reserves, National Guard and ROTC. Play is heavy from early March until Thanksgiving and any week isn't complete without some kind of competition going on. The Lady's Golf Assn. is particularly active. Todd cooperates with the officials of this organization in staging three free clinics each summer exclusively for women swingers. Also, during the summer, the Fort Knox pro conducts free bi-weekly clinics for Juniors, culminating the program with a series of big tournaments for kids of different age groups.

One of the Finest

The Ft. Knox course, thanks to Colonel Harper's relentless attention to maintenance detail, is one of the finest in the mid-South. It is laid out over slightly rolling land, is 6,500 yds. long and par of 72 isn't broken very often. The course record, appropriately enough, is held by Houck. He shot a 34-30—64 on it in 1954 in a pro-member event and candidly confesses he hasn't come anywhere near that figure since.

Golf is Great at **La QUINTA**

One of America's Fine Golf Courses

La QUINTA COUNTRY CLUB

LOCATION: La Quinta, Calif.
Nationally popular winter playground
for many important business,
professional, and government people.
Just east of Palm Springs, Calif.

18 HOLES

TOTAL YARDAGE: 6,874

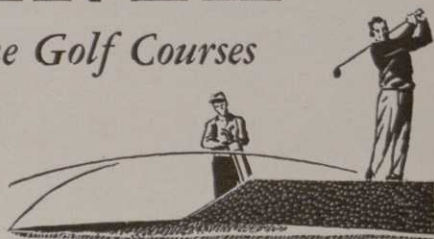
PAR FOR COURSE: 72

**Professional:
DICK GOECKNER**

MONTHS OF PLAY: 12

PRIVATE COURSE

**Architect:
LAWRENCE HUGHES**



STEEL WATER PIPE:

SMITH-SCOTT CO., INC.

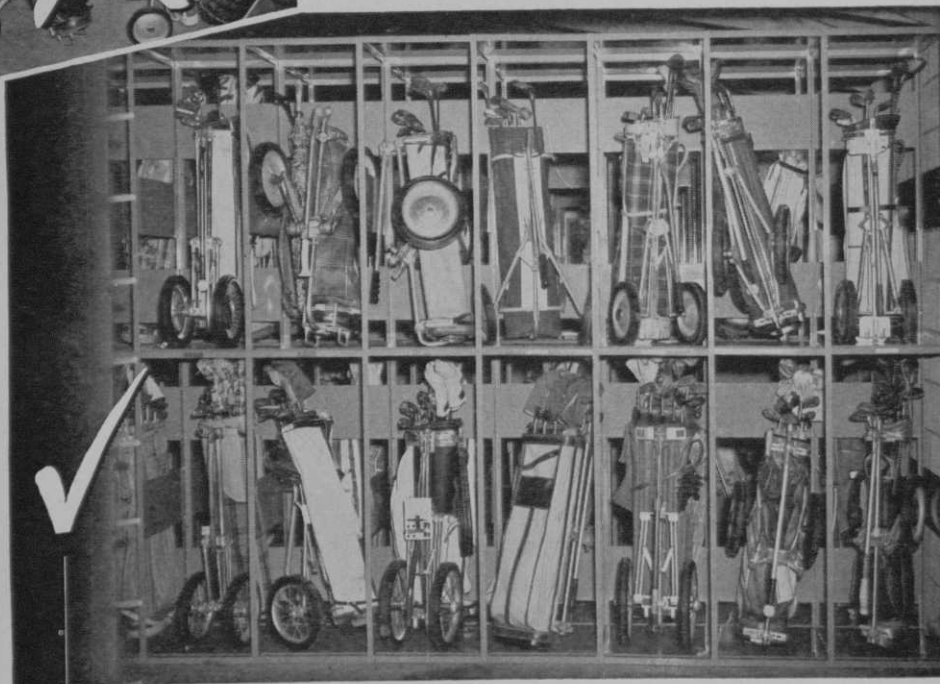


Adequate water is a vital and constant requirement for "tournament quality" golf courses. La Quinta uses over nine miles of hi-FLO Cement-Protected Steel Water Pipe in diameters of 4", 6", and 8". Smith-Scott's hi-FLO Steel Water Pipe is competitive in price, superior in performance, and assures decades of trouble-free operation. If you are expanding or replacing your water system . . . or planning a new golf course — SPECIFY Smith-Scott's hi-FLO Steel Water Pipe!

WRITE: P. O. BOX 3033 RIVERSIDE, CALIF. TEL.: OVERLAND 5-5251



IS THIS **YOUR** PROBLEM?



Here's the Answer **KUSEL**
Bag-n-Cart STORAGE RACKS

- 1 A place for each bag and cart.
- 2 The greatest number in the least floor space . . . may save building expense.
- 3 Less upkeep — Easiest to clean and to keep clean.
- 4 Open type of rack allows wet equipment to dry properly.
- 5 Can be adapted to bags only. (2 average size bags per cubicle)
- 6 Design and ruggedness ideal for long wear under natural abuse.

Rugged, all steel racks can be utilized for available space — double tiers, single tiers, back to back, or against a wall. No rough edges to tear 'n' wear equipment. Roll-ridge in base prevents accidental "roll-out." Finished in Vista-Green, long-wearing Epoxy Enamel.

*Inquiries invited
from Golf Club
Supply Dealers*

ORDER NOW

KUSEL DAIRY EQUIPMENT COMPANY
WATERTOWN, WISCONSIN
A NAME ASSOCIATED WITH METAL FABRICATION FOR OVER A CENTURY



MODERNIZE Your Shop With PEG-BOARD



PGA Reorganizes Setup at National Headquarters

The PGA has reorganized its national headquarters in Dunedin with an eye to streamlining and expanding the overall facilities of the association. Key man in the reorganization is Thomas W. Crane, named to the newly created post of executive dir. and counsel. Formerly his title was executive sec. and counsel. Others involved in the new setup at Dunedin are Robert L. Russell, who becomes assistant executive dir. and Lloyd E. Lambert, now executive sec. and associate counsel. Russell formerly was the PGA's public relations dir., and Lambert was an administrative assistant.

The reorganization was worked out by the PGA's new pres., Lou Strong, Wally Mund, vp, George Hall, treas., and others.

Crane has been with the pro golf organization for 20 years, as a counsel, and has handled administrative duties. Russell came with the PGA in 1957. He handles various headquarters administrative tasks. Lambert, who has been on the PGA staff for two years, is specializing in legal work and handles administrative affairs. Crane supervises both Russell and Lambert.

Detroit District GA Now Golf Association of Michigan

Because its operations have been extended to take in clubs as far away as Traverse City, Grand Rapids and Saginaw, the 42-year old Detroit Dist. GA has changed its name to Golf Assn. of Michigan. A total of 63 clubs are enrolled in the association with prospects that four more will come in this year.

In announcing the name change, C. L. Miller, retiring pres. of the organization, said there was a feeling that the outstate clubs weren't getting full representation and benefits from the old DDGA because the former name denoted only Detroit area clubs.

New Jersey Golf Show

The New Jersey Shore winter golf league, in operation for the last three years, has set aside Apr. 23 as the date of its first golf show. It will be held in Convention Hall, Asbury Park, and it is hoped it will turn out to be one of the best attended shows ever undertaken for N. J. and Metropolitan golfers. Films, teaching clinics and displays of 1961 golf merchandise will be featured.

NEW AutoMAC CHARGER prolongs golf car battery life...



GOLF
CAR
BATTERY
CHARGER

Keep golf cars running more profitably with the new improved AutoMAC. It's the two-rate charger that prolongs battery life because it is built to conform to the battery manufacturers' own requirements for proper charging.

AutoMAC's new non-mechanical, fully transistorized terminal voltage relay switches from high rate to the correct finishing rate, then shuts off automatically when the charge is completed. This fully automatic operation saves your time and protects batteries from overcharging.

In addition, the AutoMAC's new, non-aging silicone rectifiers insure longer charger life with higher efficiency.

For complete information on how to increase battery life through more efficient charging, write for Model 400 and 500 literature today.



Motor Appliance Corporation

5737 West Park Ave. • St. Louis 10, Mo. • MI 7-1138

California Tax Fight

(Continued from page 46)

favorable vote from the electorate for the legislation. Decisions as to how funds should be raised and who was to conduct local campaigns were, of course, left up to the clubs.

Two Separate Campaigns

We ran two separate campaigns. Pat Bishop and Co. handled the overall campaign promotion for the Northern California group and Baus and Ross was in charge of ours in the southern part of the state.

In addition to enlisting the help of all clubs in the two state golf assns., support of public and semi-private clubs was sought along with that of the PGA sections in the northern and southern parts of the state. A great deal of financial as well as doorbell ringing support came from these sources. Golf writers and others in various publicity fields also were asked for, and generously gave, their backing.

One of the outstanding promotions of the campaign was the staging of the Proposition 6 Golf Classic in which professionals, well known amateurs, motion picture and other celebrities took part. Bob Hope was general chmn. of the Classic and took every opportunity, whether it

was through TV, personal appearances, etc., to plug for passage of the tax amendment. The publicity leading up to the playing of the Classic, as well as the many accounts of the tournament itself, played a big part in bringing the tax plight of the courses to the attention of the public. We recommend it to any organization that ever becomes engaged in a tax battle similar to the one waged in California.

Flood of Literature

Probably the real backbone of the campaign was the flood of literature that was circulated in addition to the many telephone calls that were made and the telegrams that were sent out. It is impossible to estimate just how far reaching these various media were in influencing voters, but from the standpoint of volume and weight they were overpowering. In addition to these, probably a million letters went out from heads of various industrial and commercial firms, professional people and women's organization. Another item that certainly must have favorably influenced many voters was the mailing of "Dear Friends" postcards that went out in bales.

Looking back on the campaign which was so ably conducted under the general chairmanship of Edward K. Zuckerman, then pres. of the Southern California GA,