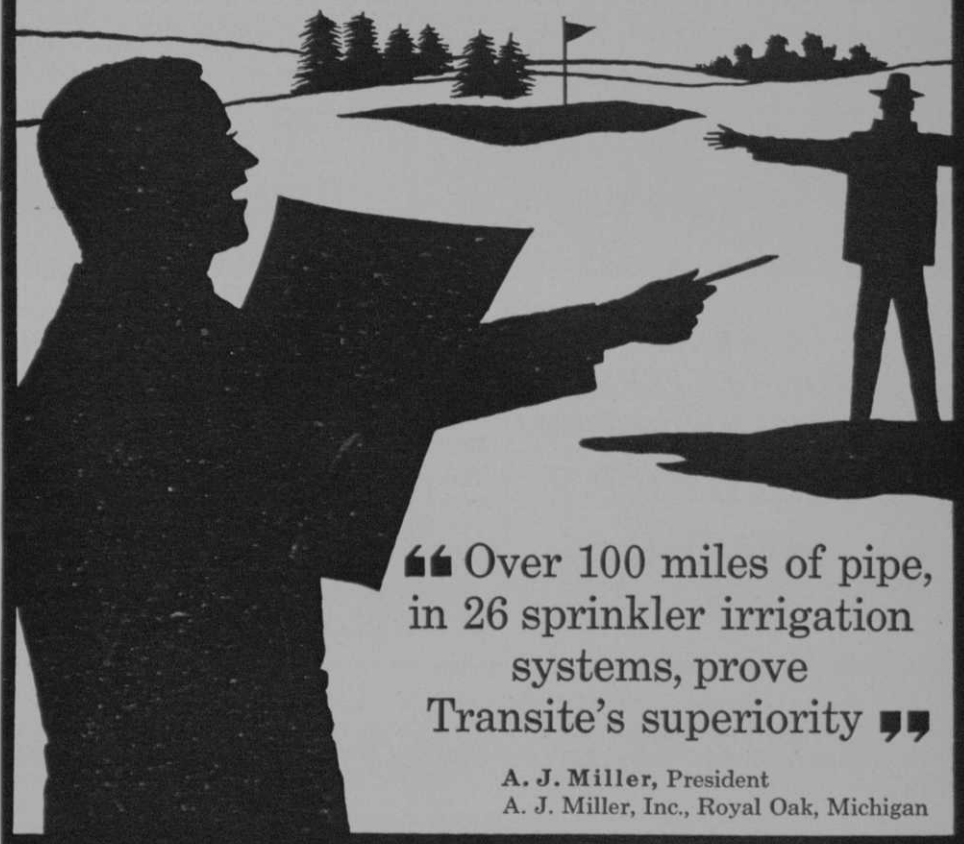


A golf course designer from Michigan reports:



“ Over 100 miles of pipe,
in 26 sprinkler irrigation
systems, prove
Transite's superiority ”

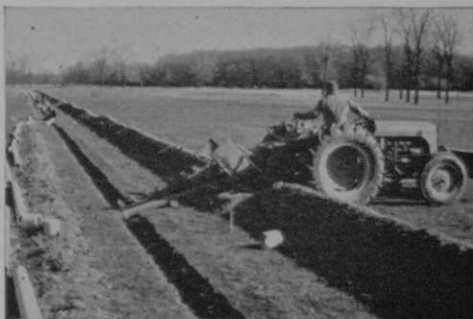
A. J. Miller, President
A. J. Miller, Inc., Royal Oak, Michigan



“We've had a great deal of experience with Transite Pipe in golf course sprinkler irrigation systems . . . as a matter of fact, over 528,000 feet of experience. Our superintendents and installers

prefer Transite because it is not fragile and therefore can be handled in a normal manner. Its light weight and simple coupling method are also appreciated. And, with Transite, we never have to worry about reduced carrying capacity over the years due to internal corrosion. The variety of water supplies we have to deal with makes this of prime importance. Judging from the reports received from satisfied customers, I'd say that Transite has performed as well for them as it has for us.”

For the whole Transite® story, write Johns-Manville, Box 362, G-8, New York 16, N. Y. In Canada: Port Credit, Ontario. Cable address: Johnmanvil.



JOHNS-MANVILLE





**A MECCA
FOR GOLFERS**
the Famous Scottish Resort

**TURNBERRY
HOTEL**

Ayrshire

with its championship Ailsa and Arran Golf Courses overlooking the sea and in the heart of the Burns Country, near Culzean Castle. Also a miniature golf course, tennis courts, indoor swimming pool and a private cinema. Dancing.

OPEN ALL THE YEAR

Turnberry Hotel is adjacent to the international airport at Prestwick.

Full details may be obtained from the Resident Manager, Turnberry Hotel, Ayrshire, Scotland, or from British & Irish Railways Inc.:

New York: 630 Fifth Avenue. Los Angeles: 510 West Sixth Street. Chicago: 39 South La Salle Street. Toronto: 4 King Street (West)

Finishing School

(Continued from page 22)

pare and apply fertilizers, herbicides, fungicides and man the hoses, etc., but this mainly is to familiarize them with all the different types of work that have to be done on a course.

Williams, incidentally, points out that too much time doesn't have to be devoted to the technicalities of greenkeeping since the trainees are well grounded in these in their college turf management courses. "What it amounts to," says the Bob O'Link greenmaster, "is that everything these fellows learn in school suddenly makes sense when they see it demonstrated."

The observational phase of the program is, of course, pretty well worked in with the labors that the young men perform. "Learn by doing," is the theme in this respect. One thing incidentally, is constantly stressed by Williams and Bob Puzin, his assistant, who plays an important role in the Bob O'Link program: No job is performed by any trainee without an explanation of why it has to be done. Consistent with this thinking, the full day's program is explained to the young men before they start working in the morning.

All of the trainees take turns serving as

job supervisors. Usually, three of the young men are assigned to work under a fourth for a few days or for even a week, with the supervisory job being rotated among the four. Since Williams and many other members of the GCSA feel that this is the greatest lack in the education of a supt., perhaps more emphasis is put on this part of the Bob O'Link course than any other. Not only are student trainees taught how to give orders and get the most out of the men working under them without incurring resentment or resistance, but they are constantly reminded that a person in a supervisory capacity has to learn to practice self discipline and keep the right attitude and outlook toward his job regardless of the adversity that he may encounter.

One of the best things about the entire Bob O'Link program, in Williams' estimation, is that it gives the student trainee a chance to decide if he wants to make a career of being a course supt. As pointed out before, about three out of ten who have trained under Williams have gone into other phases of turf work, including research. The net result, at least, has been that the 30 young men who have attended Williams' summer schools in the last

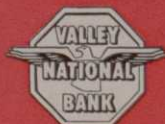
WARRANTY GUARANTEED **INDESTRUCTIBLE** TEE MARKERS AND SIGNS

TENITE BUTYRATE

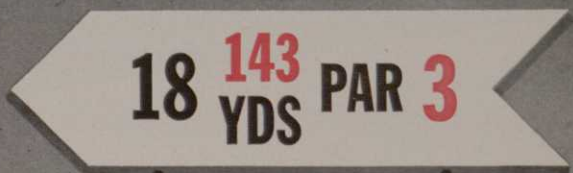
EASTMAN test-proved over 5 yrs. in the Ariz. desert, Tenn. mts. and Fla. coast. **GUARANTEED** lifetime impact and weather durability.

Ten-A-Flex

Letters and numbers by FLORIDA PLASTICS **GUARANTEED** 100%. Lifetime shatterproof and indestructible BEAUTY.



Valley National Bank Special WARRANTY TRUST ACCOUNT **GUARANTEES** 3 years service or free replacement.



ACTUAL SIZE OF SIGN
13" long - 3 1/2" high - 1/2" thick
INDESTRUCTIBLE!



Tag-a-long

Rental golf cart designers made clubs **MILLIONS** in profits with quality carts. We **GUARANTEE** you thousands of dollars in **SAVINGS** with ultra-quality markers and signs.



BEAUTIFY AND SAVE WITH PLASTI-MARKERS

Believe it or not—it's true... See for yourself—Clip coupon!

BEAT them with a HAMMER—HIT them with GOLF CLUBS—KICK them with SPIKED SHOES—RUN OVER them with TRACTORS, GOLF CARS or MOWERS—PLASTI-MARKERS are UNBREAKABLE.

SAVE forever the MAINTENANCE and REPLACEMENT COSTS of your TEE-MARKERS and SIGNS. BEAUTIFY your GOLF COURSE with CUSTOM-CRAFTED PLASTI-MARKERS guaranteed by EASTMAN—FLORIDA PLASTICS—and a WARRANTY TRUST FUND that assures FREE replacement for 3 FULL YEARS.

RAIN nor SUN—HEAT nor COLD—WEATHER nor TIME—FERTILIZERS nor CHEMICALS—cannot dim the COLORS or LUSTRE and lasting BEAUTY of PLASTI-MARKERS.

PLASTI-MARKERS, INC. P. O. BOX 536 SCOTTSDALE, ARIZONA

PLEASE RUSH TODAY

TWO (2) Sample PLASTI-MARKERS for 1st TEE. Scorecard and \$15.00 is enclosed. Full credit on quantity order at LOWER PRICES guaranteed.

DO NOT BELIEVE IT. Send samples of MATERIAL and order forms.

Will need _____ units for delivery on or about _____

CLUB _____

ADDRESS _____ CITY _____ STATE _____

NAME _____ TITLE _____

THE SPREADER THAT'S 3 TO 1 BETTER



Unique positive spreading action covers 3 times the area . . . saves $\frac{2}{3}$ of your time! Your Dealer has the full story. Ask him for a demonstration NOW.



SPREADER

WEST POINT, PENNSYLVANIA

seven years haven't gone chasing up any blind alleys in search of a career.

Four Live at Club

Four of the trainees live in comfortable quarters that have been fixed up for them in the Bob O'Link maintenance building and four room in Highland Park. None has offered any kind of a discipline problem and all, according to Williams, are quite serious young fellows who aren't adverse to occasionally opening and studying a textbook on turf. Each of the eight has at least another year of schooling ahead of him and all intend to return to Bob O'Link next summer to further their practical education. The best golfer among the group is acknowledged to be George Druzisky, who plays to a six handicap. Fred Opperman, who never had swung a club until June of this year, occasionally plays the tough Bob O'Link course in sub-100 figures.

Bob O'Link is not the only club that has a student training program. At least three others in the Chicago district, Olympia Fields, Gleneagles in Lemont, Ill. and Glen Oak in Glen Ellyn, Ill., have summer schools for prospective supts. Both Warren Bidwell at Olympia and Walter Fuchs of Gleneagles have three youngsters learn-

ing the practical side of turf work, and Ray Gerber of Glen Oak has one young man under his wing.

Serve Yourself Shop

(Continued from page 25)

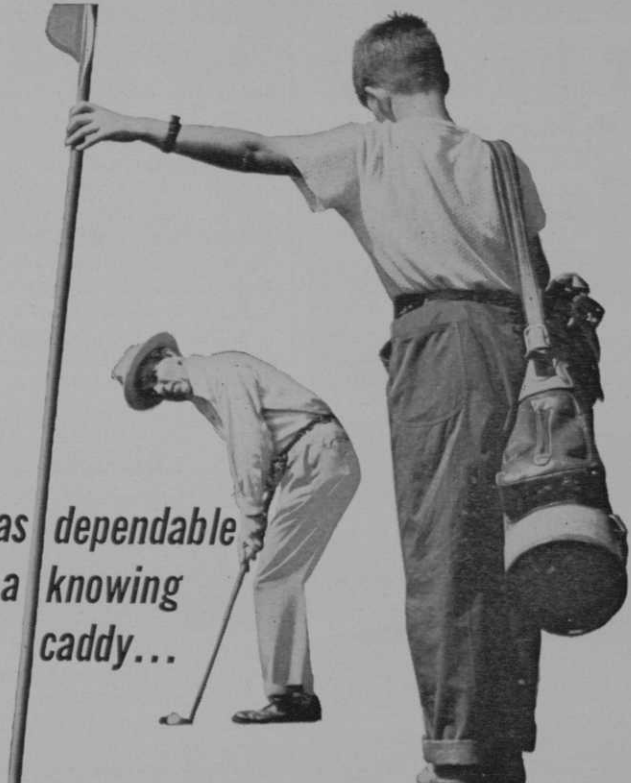
displays closeouts in apparel and the price reductions convert slower-moving merchandise into cash as well as clear the inventory for buying of Christmas and spring merchandise.

Everett and Cotton say that the junior program at Butte Des Morts is easing the club trade-in problem. Members' children are eager for clubs so the clubs go to the kids instead of being turned in on a new set.

When the club built a new pro shop in a building close to the first tee, and convenient to the clubhouse, Leonard recommended that attractive simplicity and utility rather than anything fancy be the keynote.

Not Satisfied with Lighting

The building's exterior and interior is natural redwood. There is considerable window space. Leonard and Beavers are not satisfied with the lighting and intend to have changes made, especially in the



as dependable
as a knowing
caddy...

K&M ASBESTOS-CEMENT UNDERGROUND IRRIGATION PIPE

So smoothly and dependably does quality K&M Asbestos-Cement Underground Irrigation Pipe supply water to thirsty fairways you hardly know it's there.

There's never a costly maintenance headache. Flow is uninterrupted. Your pumping costs remain low. This practically indestructible pipe won't tuberculate, resists corrosion and is immune to electrolysis. The exclusive, patented K&M FLUID-TITE Coupling forms a leak-tight and root-tight joint that wastes not a drop of water under all operating conditions.

Another plus is speed of installation, with minimum interruption to your playing schedule. This modern pipe assembles in two easy steps. A 5° deflection, permitted at each joint, enables the pipe to follow the contours of your grounds.

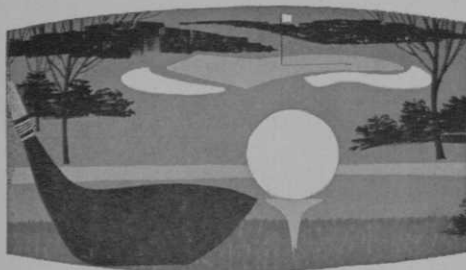
Choose K&M Asbestos-Cement Underground Irrigation Pipe for your fairways and heaviest water pressures. For sprinkler systems around greens, we recommend durable, economical K&M Plastic Underground Irrigation Pipe.

For more details, write: Keasbey & Mattison Company, Ambler, Pa., Dept. P-2081.

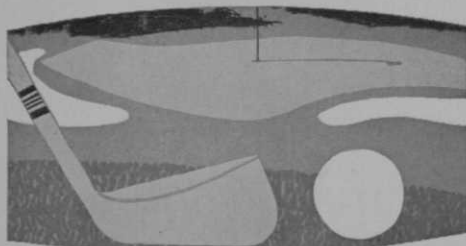


**Keasbey
& Mattison**
at Ambler

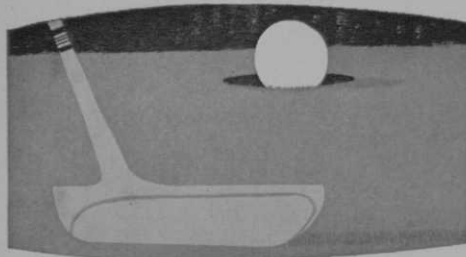
for
turf beauty
that
lasts...



and lasts...



and lasts...



use
Armour
Vertagreen®
Plant Food

installation of spotlights that can be moved to accent certain merchandise.

Back of the shop there is room for an office, new merchandise storage and room for 350 racks. That isn't enough rack room, however. Butte Des Morts has 310 active men members and 150 women who play regularly.

There is no storage space for bag carts in the shop, but a roofed space outside for the convenience of members who have their own bag carts. Leonard keeps his 13 golf cars under canvas covers outside the shop in the season and stores them in the equipment barn in the winter. Charging equipment and wiring is on the pro shop equipment and wiring are installed on the pro shop building.

Refresher Lessons

(Continued from page 32)

to the player to pay more attention to his grip.

Fortunately for the player and his teaching professional, another common fault of the typical golfer is readily detected and quickly corrected by the experienced professional. That is the mistake made in standing to the ball: that of the placing of the feet, or poor posture. Generally, either stiffness or reaching for the ball are the result of these.

Forgets What He Learned

The player undoubtedly has been taught the correct grip, stance, etc. by his professional but has forgotten much of what he learned. He doesn't play often enough to establish good golfing habits, or to have a valid idea of what may be causing his trouble and what to do to eliminate it. If he knew what was causing his trouble he would recall the technique that would correct it.

The player can't see himself as the expert teaching professional sees him. Hence the resort pro's refresher lesson rather than experiments in self-diagnosis and self-treatment is the most effective way of showing him how to improve his game.

The refresher type of lesson is bound to grow in popularity and profit for the club professional. It gives him the opportunity of attending to the needs of more of his members than he can serve in the conventional half-hour or hour lesson sessions which, of course, are needed by all members at some time. The "refresher" lesson enables the pro to enlarge his opportunities for discovering if the member has correct equipment. Far more golfers

WHY SETTLE
FOR A SPRINKLER
SYSTEM THAT'S NOT
"PAR FOR THE COURSE?"

ORANGEBURG Brand ABS Plastic Pipe is the modern piping for golf-course irrigation . . . and for good reasons. It is low in cost, easy to install, and because it will not rust or corrode, it will give trouble-free service for years and years. ORANGEBURG Brand ABS Plastic Pipe is furnished in 20-foot lengths; is light-in-weight and easy to handle and join. Solvent welded joints are made in a jiffy and because the pipe is joined on the outside, you

are assured of uninterrupted flow with minimum pressure drop. Semi-rigid ORANGEBURG Brand ABS Plastic Pipe has a pressure rating of 150 pounds and is available in 1/2" to 4" sizes. Write Dept. G-81 for more information.

ORANGEBURG[®]
BRAND
ABS Plastic Pipe



ORANGEBURG MANUFACTURING CO., ORANGEBURG, N. Y. DIVISION OF THE FLINTKOTE COMPANY, MANUFACTURER OF AMERICA'S BROADEST LINE OF BUILDING PRODUCTS

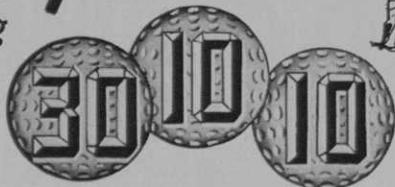




Paul E. Weiss, Superintendent of the beautiful Lehigh Country Club, Allentown, Pa. has used Peters soluble fertilizer over the past 6 years with out-standing results. Paul uses it to get controlled feeding during the troublesome summer months, using it in light applications along with his regular preventive spray treatments.



PETERS



18¢ PER POUND

300 POUNDS AND OVER
DELIVERED PREPAID
LESS THAN 300 POUNDS
F. O. B. ALLENTOWN, PA.

(ADD 3 CENTS PER POUND
WEST OF THE MISSISSIPPI)

**For An Outstanding
Preventive Spray
Program with
Controlled
Fertilization!**

SOLUBLE FERTILIZER

Peters 30-10-10 soluble fertilizer is manufactured by the Robert B. Peters Co., Inc. leading soil fertility control specialists and consultants to the florist greenhouse trade, from the results of over 80,000 soil tests done by them over the past 15 year period. Peters 30-10-10 soluble is a completely sequestered (no-precipitate, no residue) type fertilizer that contains ALL REQUIRED TRACE ELEMENTS in a chelated (completely available) form. It is compatible with all commonly used spray materials and is most effectively used to supplement the regular preventive spray program to obtain controlled fertilization. It contains a most effective penetrating and wetting agent.

ROBERT B. PETERS CO., Inc. 2833 Pennsylvania St., Allentown, Pa.

are playing with misfit equipment than is realized. In some ways that is a difficult problem for the pro. If he says that the pupil's clubs do not fit the pro may be accused of pushing to make a sale. A refresher lesson with a club supplied by the pro often does all the talking necessary in making a sale.

Along in midsummer when lesson business slacks off it is a good time for the professional to start using the refresher course program. It may take him a little time to get the idea across but before long his members will be grateful to him for examining their games, making repairs and checking them out in 15 or 20 minutes.

Philadelphia Clubhouse

(Continued from page 52)

tiques. Circular designs in the carpeting of gunmetal, yellow and orange tweed are reminiscent of old Pennsylvania Dutch buttermolds. Of special interest is the striking 15-foot high copper fireplace hood.

In the Rosewood Room, the new clubhouse's main entertainment room, walls of rosewood paneling and a very soft celadon colored plaster are complemented by furniture covered in beige, charcoal, orange

and yellow plaid fabrics, and in coral and mustard colored leather. Gracing the Rosewood Room are two very fine 18th Century architectural paintings.

In the men's bar, called the Mill Room, the dark polished walnut floor, deep terra cotta walls and attractively upholstered furniture are a forceful reflection of the room's vibrant personality. Important decorative notes in this room are an early Swiss perforated tin cupboard housing a TV set.

Generous use of glass in the dining and cocktail areas provides magnificent views of the rolling country of Lower Merion township. Don Beaver says that on an exceptionally clear day the skyline of Philadelphia, 14 miles to the south, can be seen.

"Functional" Defined

John H. Welsh says that the word "Functional," does not have an exact meaning, but for a lack of a better one must be used to describe the Philadelphia clubhouse.

"I would say," he explains "that functional means the way a building is used. It connotes the best use of and arrangement of space. But more than use is involved. Proper enjoyment of a space is functional. What we were seeking was a

NEW ROSEMAN

HI-CUT ROUGH MOWER

SHOWN • PROVEN • ACCEPTED

Thank you, Mr. Superintendent, for your valued comments.

The new Roseman Hi-Cut mower, introduced at our recent series of Roseman Days, has been proclaimed the outstanding rough mower on the market today.

The design and performance characteristics that elicited this opinion were the "high-cutting" feature, the large, rugged, 4-bladed 10" reels, with heavy-duty blades, riveted — not welded; the non-breakable malleable side frames, and the puncture-proof laminated tires, with caterpillar-type lugging ability that gave positive, constant cutting action in the toughest, thickest and deepest rough grasses.

It was observed that the Roseman rear-

drive design eliminates bobbing of the cutting reel; allows faster mowing speeds with all grass cut to uniform height, and with substantial time and labor savings.

Also the Roseman rear-drive design permitted trimming close to obstructions and over traps, bunkers, shrubbery beds and curbs, with great economies in hand labor.

We are pleased with the wonderful reception you gave the new Roseman Hi-Cut mower designed to mow your rough areas in an improved manner and at far less cost. We invite you to make your next rough mower a Roseman Hi-Cut model.



NOTE THESE OUTSTANDING FEATURES

REAR WHEEL DRIVE

Hug ground for smooth cut. Permits trimming over traps close to trees.

LAMINATED PUNCTURE PROOF TIRES

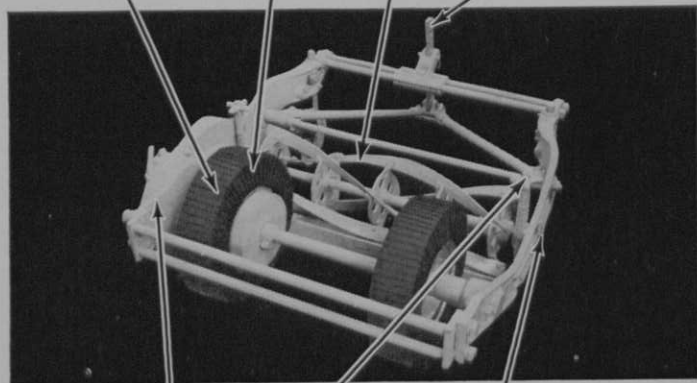
Trouble free, no bouncing, more traction.

RUGGED, LARGE 10" REEL

Heavy-duty blades, riveted not welded.

HI-LOW-CUT FEATURE

Quick, simple height change.



NON-BREAKABLE SIDEFRAMES
Tough malleable construction

HAND ADJUSTMENT
Simple, no tools required.

SHARPENING FEATURE
For lapping in reel blades.

MAKE YOUR NEXT GANG ROSEMAN



ROSEMAN MOWER CORPORATION
EVANSTON, ILLINOIS, U.S.A.

NATION WIDE SALES and SERVICE

Write or phone TODAY for descriptive literature, prices and availability

CART-BAG

PROOF OF
POPULARITY ...

26 P.G.A. GOLF PROS have endorsed CART-BAG in our 1961 National Advertising !

These well-known Pros, sectional champions, officers and fellow-members of P.G.A., base their praise on experience. Each has sold 75 or more CART-BAGS.

You can benefit by their experience. Add CART-BAGS to your Pro Shop — prove their popularity with your club members. You, too, will find out why smart, colorful CART-BAG is Number ONE choice in Pro Shops nationwide — preferred for their lightness, easy-pulling convenience, durability and their aid to better golfing.

SOLD THRU PRO SHOPS ONLY

Write for illustrated folder

SIT-N-REST GOLF BAG CORP.

637 E. Center St., Milwaukee 12, Wis.



FOUR New 1961 Models

- For 6 Irons, 4 Woods
"SPECIAL"\$32.50
"COUNTRY CLUB" (with seat) 36.50
- For 10 Irons, 4 Woods
"MASTER SPECIAL"\$36.50
"MASTER" (with seat) 39.50

completely integrated country club environment."

Certainly, the kitchen location is very functional and so is the pro shop. The latter was placed on the first floor adjacent to lockerrooms so that members have to pass through it on their way to the course. Next to the pro shop is the golf bag storage area. Instead of the traditional horizontal storage, the bags are placed on slanted shelves.

Some Resisted Change

What motivated the building of the new clubhouse? Mainly the decision of the board to house all the club's activities under one roof at Gladwyne. Philadelphia CC, the third oldest chartered club in the country, was founded in 1890. Its activities for many years were centered in the Bala section of Philadelphia. It later built an 18-hole course at the present location and still later transferred all its golf activities there, retaining some of its recreational facilities at Bala. Putting everything in one location obviously required better service facilities, etc. In addition, some of the golfers at Gladwyne wanted better arrangements. They were using an old clubhouse. But not all were so minded. There is still a breed of golf-

ers who don't particularly care for modern country club living for the whole family. They are preoccupied with golf. In fact, some gripe that their last refuge of recreational privacy is being invaded.

All these factors had to be considered in building a new clubhouse. When the changeover to Gladwyne was made, many members also feared that the trek further out in the country wouldn't pay off. They underestimated the hunger for golf and country club living. Today present clubhouse facilities are already being overtaxed during peak periods.

Planning the Project

How was a project of this kind planned?

The most important thing, says Nolen (who is a member of the club) is to have a strong building committee which understands building and financing and knows how to say no. Some members want to go overboard on projects of this kind; others want to cut too much.

Nolen's firm had a close working relationship with the building committee. It also kept close tab on the desires of chairmen of other committees. In a membership operation arbitrary decisions could not be made.