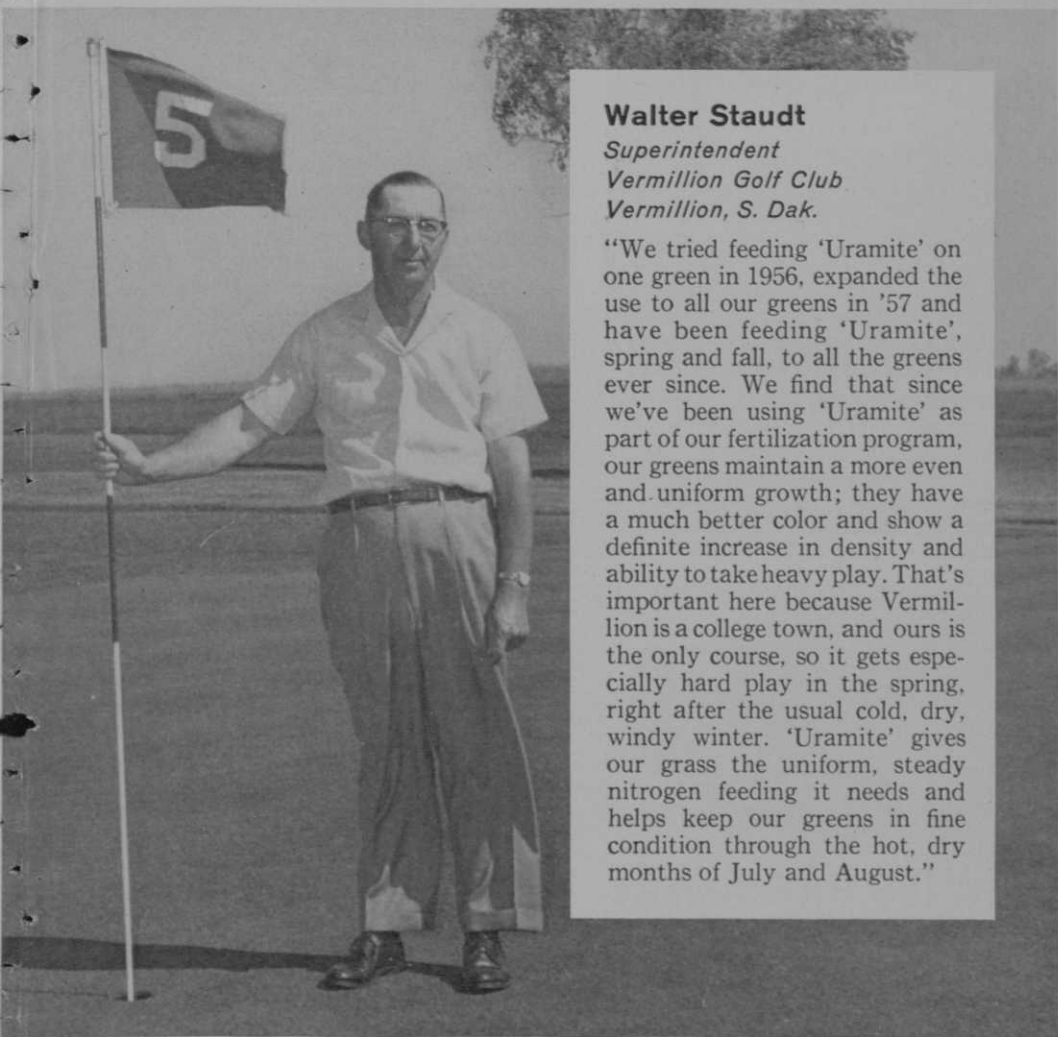


greens stay disease-free and you use Du Pont Turf Products



Walter Staudt

*Superintendent
Vermillion Golf Club
Vermillion, S. Dak.*

"We tried feeding 'Uramite' on one green in 1956, expanded the use to all our greens in '57 and have been feeding 'Uramite', spring and fall, to all the greens ever since. We find that since we've been using 'Uramite' as part of our fertilization program, our greens maintain a more even and uniform growth; they have a much better color and show a definite increase in density and ability to take heavy play. That's important here because Vermillion is a college town, and ours is the only course, so it gets especially hard play in the spring, right after the usual cold, dry, windy winter. 'Uramite' gives our grass the uniform, steady nitrogen feeding it needs and helps keep our greens in fine condition through the hot, dry months of July and August."

SEMESAN® turf fungicide

a specially prepared mercurial for hard-to-control diseases.

TERSAN® OM turf fungicide

—combines the effectiveness of "Tersan" 75 with organic mercury.

URAMITE® fertilizer compound

—38% nitrogen—
feeds slowly, keeps nitrogen at proper level.



REG. U.S. PAT. OFF.
BETTER THINGS FOR BETTER LIVING
... THROUGH CHEMISTRY

On all chemicals follow labeling instructions and warnings carefully.

see "U.S." when it rains!



NEW U.S. RAYNSTER®

Lightweight, action-cut jacket—You're as free to swing as if the sun were out! Because the Raynster "Fairway" jacket is designed to give you maximum room to move. More, it's light and quiet—a soft, supple vinyl with a fabric feel. In beige. Sizes: S, M, L, XL. Only **5.95**



NEW U.S. PAK-A-WAY

Lightweight, flexible, tough—Now, the popular Pak-A-Way in a golfer's model! Made of a great new material that's so light you barely feel it. And so flexible it fits slickly over your shoes—folds flat, fits into your pocket or bag. Molded cleats. M (6 to 9) and L (9 to 12). Only **3.95**



United States Rubber

Rockefeller Center, New York 20, New York

Philadelphia CC Clubhouse

(Continued from page 43)

the course itself; the building of an \$80,000 swimming pool (the largest club pool in the area); four tennis courts; special rec facilities for teen-agers; and expanded accommodations for adult activities.

Two-Level Activity

The lower level of the building adjoins the pool, and has swimming lockers, a game room, rumpus room, soft drink and snack bar, juke box and lockers for teen-agers. The main level is generally reserved for adult activities and provides for a dining room accommodating 400 persons, a print gallery for loan collections, cocktail lounge, men's bar, main entertainment room, men's and women's 19th hole locker rooms, pro shop and bag room.

The kitchen was given the No. 1 priority location in the center of the main level. Thus, it can serve the main dining area, informal dining area and the cocktail lounge with the least amount of steps by waiting help. It is also convenient to the outdoor dining terrace. The kitchen includes a complete bake shop, five ovens, in addition to a number of broilers, fryers, and steam kettles. Five walk-in refrigerators, six reach-in refrigerators, a giant freezer, four ice makers are located in the basement. On the upper level are six guest rooms, a board room and club offices.

Although the clubhouse design is contemporary, interior decorations reflect some of the club's traditions and a good blending has been achieved with older and newer furnishings. There is generous use of fine semi-antique and antique pieces, some of which are exceptional by reason of both their age and their excellent design. The early American motif is repeated in old brass lamps and fixtures placed throughout the clubhouse.

Use Native Stone

The main dining room is dominated by a massive fireplace wall of Pennsylvania stone, complemented by floors of dark polished oak and panels supporting columns of light natural oak. The main lounge or cocktail lounge, on the far side of the stone fireplace wall overlooks the swimming pool. It is decorated with sturdy, handsome fabrics in shades of coral, yellow and green with black. Hastings Square furniture was chosen to reflect the relaxed character of the room. It is augmented by a fine 17th Century Italian cupboard, and by other imported an-

(Continued on page 68)

SPRINGFIELD, VIRGINIA, BUILDER

**bans maintenance worries . . .
saves 50% on materials!**



The 9,000 feet of CresLINE KL pipe go in fast at the West Springfield, Virginia, course. All that's required to join the 20-foot lengths is a paintbrush, thinner and cement.

with a **CresLINE[®] KL**

PLASTIC PIPE SPRINKLER SYSTEM

Thomas A. Cary, vice president of Carr, Incorporated, wanted a dependable sprinkler system at low cost for the 180-acre, 9-hole golf course near the builder's 600-home housing project at West Springfield, Virginia. He picked CresLINE KL Plastic Pipe because it costs about 50% less than galvanized pipe. He also saved considerable installation time — CresLINE is light in weight and can be joined quickly with plastic cement. Even more important, he knew that CresLINE KL is dependable. It is made of virgin ABS resin and won't rust, rot or corrode — ever. Mr. Cary has no maintenance worries or line failures.

These are solid reasons why CresLINE KL Plastic Pipe should be the Number One choice for your sprinkler system — low initial cost . . . low installation cost . . . complete dependability.

WE WILL MAKE A COMPLETE ENGINEERING LAYOUT FOR A SPRINKLER SYSTEM FOR YOUR COURSE. WRITE FOR DETAILS . . .

OTHER INSTALLATIONS INCLUDE:

Homestead Golf Course
Hot Springs, Va.

Oak Crest Country Club
District Heights, Md.

Dover Air Force Base
Dover, Md.

Sauk Center Country Club
Sauk Center, Minn.

Wellington Golf Course
Wellington, Kans.

Waterloo Country Club
Waterloo, Ill.

CRESCENT PLASTICS, INC.

Dept. G-3, 955 Diamond Ave.
EVANSVILLE, INDIANA

PIONEER MEMBER OF



MEMBER OF
NATIONAL GOLF FOUNDATION

THE LOGICAL WAY TO SHIP GOLF CARS!

Uncrated - Via Enclosed Vans

- ♦ Eliminate Crating and Uncrating
- ♦ Fully Protected from Road Gravel and Weather Damage
- ♦ Finest Modern Vans Carry Up to 20 Cars
- ♦ No Unloading Facilities Needed at Club
- ♦ Cars Ready for Instant Use at Destination in Perfect Condition
- ♦ Cars Receive Tender Care in Padded Vans—All the Way



Authorized National Carriers
Call Collect for
Immediate Service



TRANS-AMERICAN VAN SERVICE, INC.

7540 SOUTH WESTERN AVENUE, CHICAGO 20, ILLINOIS Phone HEmlock 4-1000

Jensen Tells How Dorado Beach Was Put in Top Condition

Players and observers alike at the recent Canada Cup matches, played at Dorado Beach, San Juan, Puerto Rico, were greatly impressed by the condition of the course which, many of them said, ranked favorably with any other layout they ever had played on or seen. In the following paragraphs, Ray Jensen of the Southern Turf Nurseries, Tifton, Ga., outlines what was done to bring the course into such fine condition for the international matches:

Greens: Early in May the greens were verticut, topdressed and fertilized. At this time height of cut was lowered to 7/32 of an inch. This same procedure was repeated on the 22nd and 23rd of May and the cut dropped to 3/16.

The greens were fertilized three times in May with solid fertilizer: twice with a 12-6-10 formula at the rate of 15 lbs. per 1,000 sq. ft. and once with ammonium sulfate at the rate of 7 lbs. per 1,000 sq. ft. In addition, they were sprayed with ammonium sulfate in conjunction with an insecticide application. The goal was to have

5 lbs. of nitrogen, 1.5 lbs. of phosphorus and 2.5 lbs. of potash in the grass during May.

We were slightly under these figures as we had to slow up due to the dry weather. The greens were watered nearly every



Every hole at Dorado has classical look.

morning or evening because of the drought.

Fairways: The fairways received heavy fertilization in March and April as they, like the greens, were in a state of low fertility. They received only one very light application of ammonium sulfate in mid-May. Another was planned for late May



Pride of the Fairways

GREENS AND
MAINTENANCE ITEMS



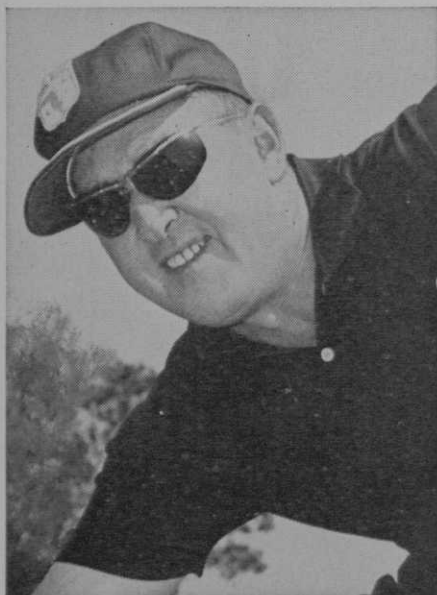
7.5'-1" DIA. ALUMINUM FLAG POLES / EXTRUDED ALUMINUM POLES / FIBERGLASS POLES—SWIVELS COTTON AND NYLON FLAGS / PLASTIC AND ALUMINUM PUTTING CUPS / PRACTICE GREENS MARKERS / ALUMINUM AND "RUBBER-FLEX" TRAP RAKES / HOLE CUTTERS AND TURF MENDERS / HOLE CUTTING GUIDE / CUP SETTERS AND PULLERS.

Write for Catalog

PAR AIDE PRODUCTS COMPANY

DEPT. G • 296 NORTH PASCAL ST. • ST. PAUL 4, MINNESOTA

"Sports Spectaculars are the first sunglasses that make sense for golfers!" says golf pro *Lew Worsham*



Sports Spectaculars are wrap-around sun glasses made with the first completely distortion-free curved lens—no blind spots! These feather-weight lenses give 180° protection from the sun's glare, let you see in every direction. Sports Spectaculars are scratch-resistant, fog-resistant and shatter-proof. For men and women, including Continental Case, \$12.95 plus tax.

SPORTS SPECTACULARS BY ROLLEY OF FRANCE

Send your order, or request for additional information to golf pro distributor, *Lew Worsham*, Golf Professional, Coral Ridge Country Club, Fort Lauderdale, Florida.

but not made due to the dry weather.

Tees: In need of fertilizer like the fairways, they received the same treatment as the fairways.

The pH of the water was pH 8.2. It was bringing our soil pH up to this level and caused us to have iron and other mineral element deficiencies. We had to spray frequently with iron chelates on greens, tees and fairways. By using ammonium sulfate we hoped to reduce the pH.

We had several worm attacks in April and May and also infestation by an insect known locally as the "Changa." This creature is similar to the mole cricket. We had only one light rain in 36 days. Without an efficient watering system the course would have dried up.

The grass is Gene Tift Bermuda on fairways, greens and tees. I think we would have nicer turf with a Tifton 328 — Ormond Bermuda combination or a Tifton 328 — Tifton 419 combination. The grass at Dorado was planted before the Tifton 328 had a chance to be introduced in the tropics.

All-Golf Clinic

(Continued from page 39)

competed in the Los Angeles Open. The tests were made using special platforms provided by the Toledo Scale Co. and installed on the driving range at Rancho Park.

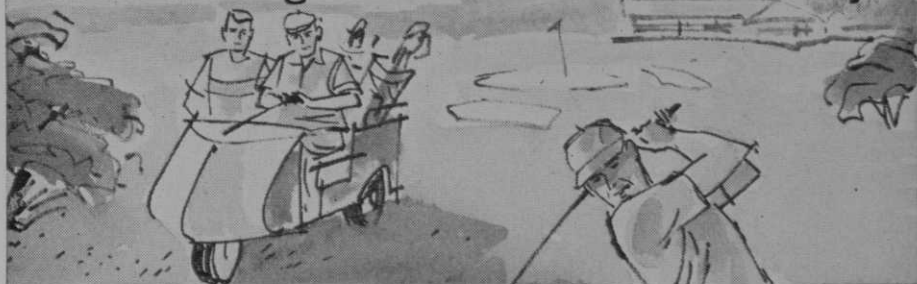
This, and other special sessions relative to teaching methods and techniques, have helped establish the All-Golf clinic as something more than mere experiment.

Started by the National Golf Foundation and the California Assn. of Health, Physical Education and Recreation at Fresno in 1959, the clinic has had a boost in attendance of 200 per cent in just three years of operation.

Clover Control Program

John McCoy, supt. of Cincinnati (O.) CC, points out that there isn't much of a trick to controlling clover if a consistent fertilizing program is followed on both fairways and roughs. He uses a fertilizer that is high in nitrogen and potash and very low in phosphate. McCoy and Marion Mendenhall, also a Cincy dist. supt. run their topdressing material through a No. 6 screen. This produces a highly refined product that gives a prime finish to a green. McCoy long has been an advocate of monthly topdressing.

From the originators of the Golf Car Battery



NEW

more powerful electric
golf car battery



GUARANTEED FOR 24 MONTHS*

Here's an all-new, rugged, electric golf car battery — the most powerful you can buy—from the originators of the golf car battery.

It can travel up to 36 holes with its extra deep reserve of power and come bouncing back for more after recharging. And it's built to be recharged again and again and again.

There's extra power, extra distance in this G-N 'toughie.' Jounce it . . . jar it . . . travel up hill or down . . . stop . . . go . . . all this in any kind of weather.

This battery, the result of years of intensive research, laboratory and field testing, is designed expressly for golf car use.

These Gould-National features make it rugged . . . powerful . . .

**Pro-rata service adjustment*



**EXCLUSIVE
GN-300
HI-TENSILE
CONTAINER**

Built to take
abuse of rough
course operation.



**SPECIAL INDUS-
TRIAL TYPE
PLATE DESIGN**

Controls over-
charging...great-
est golf car bat-
tery killer.



**FLIP-TOP
VENT CAPS**

No lost caps . . .
easy to fill, pre-
vents electrolyte
leakage.



**FAMOUS
DEEPWELL®
CONSTRUCTION**

More electrolyte
working on great-
er plate areas
. . . more power.



SEPARATORS

Double insula-
tion of rubber
and glass pro-
tects plates.



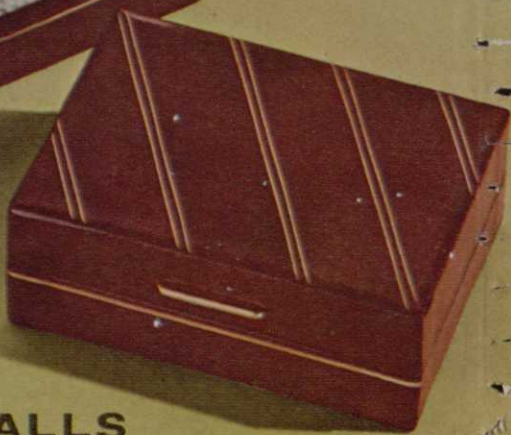
AUTOMOTIVE BATTERY DIVISION

**GOULD-NATIONAL
BATTERIES, INC.**

St. Paul 1, Minnesota

®DEEPWELL is a registered trademark of GOULD-NATIONAL BATTERIES, INC.





ACUSHNET GOLF BALLS
SOLD THE WORLD OVER THRU GOLF COURSE PRO SHOPS ONLY



*Feature Titleists,
packed the holiday way
and personalized to
make any player's gift giving
or getting a joyful thing.*

*But there's more than joy
in it . . . there's profit, too.*

*Yes, feature the golf
professionals' ball . . .
the ball that can't be bought
in a downtown store under
another name. Feature
Titleists . . . for thirteen
years now the first choice
of top amateurs and
professionals in
major tournament
competition.*

**have a
blitzen
of a
Christmas**

*No charge for the gift
boxes or for personalizing*
(dozens only and a
limit of eighteen letters and
spaces), and as usual all mail
order sales are credited to a
professional. So send in your
orders right now, and
make more money this
Christmas season. Acushnet
Process Sales Company,
New Bedford, Mass.*

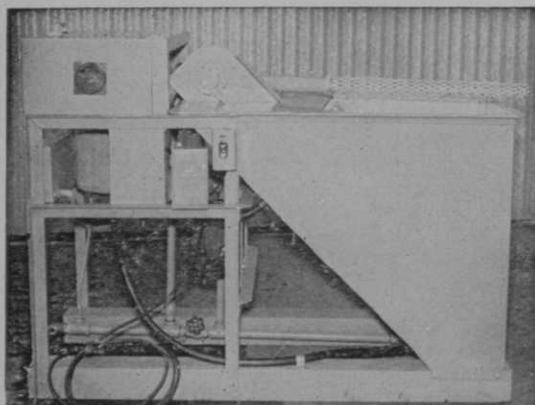


TRADEMARK

**Sorry, no personalizing
on half-dozens.*

NOW! FULLY AUTOMATIC!!

"MASTER" — DRIVING RANGE BALL WASHER.



Write for complete literature and prices.

"ONE OPERATION"

Dump dirty balls in hopper, press button — That's all.

Use with or without detergents. Continuous fresh-water rinse.

"Compact Size"
24 inches wide — 54 inches long — 40 inches high.

Hand-fed models also available.

MASTER MACHINE CORPORATION of San Diego
P. O. Box U — 900 W. 13th St. National City, Calif.

Bayer Wins PGA Driving Contest with 297-Yard Wallop

The PGA driving contest which was staged as a prelude to the Championship, held at Olympia Fields (Ill.) CC, July 27-30, was won by George Bayer for the second consecutive year. He put the ball out a little more than 297 yards after failing to hit the fairway in his first two tries. Ed Kuna of Newington, Conn., a home club pro, was second with a drive of 289 yards. Third place went to Johnny Pott, whose longest ball travelled 285 yards. Bayer's prize for winning was \$100.

Winners in other years are listed below:

	1952	
		Yds.
Harold Williams, Tuscaloosa, Ala.	329	
Ed Oliver, Lemont, Ill.	326	
	1953	
Steve M. Gaydos, Somerset, Mich.	285	
Chick Harbert, Northville, Mich.	284	
	1954	
Roberto DeVincenzo, Buenos Aires	301	
Ed Furgol, Clayton, Mo.	297	

	1955	
Roy Wallin, Mason City, Ia.	299	
Lionel Hebert, Erie, Pa.	288	
	1956	
Mike Krak, Morgantown, W. Va.	300	
Don Fairfield, Casey, Ill.	291	
	1957	
Mike Krak, Morgantown, W. Va.	254	
Chick Harbert, Northville, Mich.	253	
	1958	
Lionel Hebert, Lafayette, La.	307	
Mike Souchak, Durham, N. C.	300	
	1959	
Mike Souchak, Durham, N. C.	317	
Mac Main, Danville, Va.	310	
	1960	
George Bayer, Pasadena, Calif.	307	
Mike Souchak, Durham, N. C.	301	

Sponsors representing De Soto Lakes, Sarasota, Fla., are seriously thinking of putting on a tourney for women left-handers this fall.