



And the

SCOUT[®] has even more answers

to solve your maintenance problems

Get behind the wheel of the new SCOUT and find out why greenskeepers and operators are saying: "This little job is *made to order* for my course."

Compact—only 67-in. high, 68-in. wide, with a 100-in. wheelbase—the SCOUT hauls fertilizer, pulls a gang mower, shoots out for clubhouse supplies, picks up guests. With all-wheel-drive, it can cross the course in any direction, in any weather.

Versatile. Above you see it as a "working" convertible. But take off the doors and windows and you've got a stripped-down workhorse. Or, drive it with a steel (standard equipment) or soft vinyl top for enclosing the cab. Or, drive it with a full-length steel or soft vinyl top for enclosing both the cab and pickup box.

See your INTERNATIONAL SCOUT Dealer or Branch. International Harvester Company, Chicago.

THE SCOUT *by* **INTERNATIONAL[®]** 

Your Problem: LEAVES & GRASS CLIPPINGS Your Answer:

The
**GOOD
ROADS**

**MULCH-VAC
SWEEPER (B25)**

Towed-type. Vacuums,
mulches, spreads,
or collects.
6' 5" path.
Send for literature.

Manufacturers of Snow Plows, Road Spreaders, Leaf & Litter Equipment

Good Roads

GOOD ROADS MACHINERY CORPORATION
MINERVA, OHIO

up the whole course because they pay taxes."

Patio Springs, Inc., Ogden, Utah, Chris Apostol, pres., plans to build 18 and clubhouse: cost \$600,000 . . . Expect to open Fullerton, Calif., municipal 18 Sept. 1 . . . Pekin (Ill.) CC building 18 replacing course and clubhouse sold for \$323,000 for high school site . . . Club got about 160 acres for new layout from company planning subdivision.

Building Oak Lane CC, Woodbridge, Conn. . . Judge Charles Henchel is pres. . . Geoffrey Cornish is the architect . . . Clay McGowan heads group organizing club at Chico, Calif. . . Southaven Land Co., Memphis, Tenn., developing community in Tennessee, near Memphis, which will have a course . . . Kittyhawk, Dayton, O., newest municipal course, opens 18 standard with yardage from 6,300 to 7,000 and Par 3 of 3,400 yds. . . These new layouts give Dayton 99 holes of public course . . . Population is 262,332.

Marin GC opens its \$2,000,000 18 and clubhouse at Novato, Calif. . . San Ramon Village, Calif., 18 will be opened in southern Alameda county by San Ra-

MILORGANITE

**BEST FOR BUILDING
HEALTHIER
TURF!**

CURBS

- DOLLAR SPOT
- BROWN PATCH
- SNOW MOLD
- NEMATODES

Fertilizing with MILORGANITE reduces turf diseases which produce ugly brown spots. Disease control is more effective on MILORGANIZED turf. Nation-wide tests (names on request) prove conclusively that MILORGANITE is best for building healthier turf.

If you have a Turf Problem, write Turf Service Bureau,

THE SEWERAGE COMMISSION

Milwaukee 1, Wisconsin



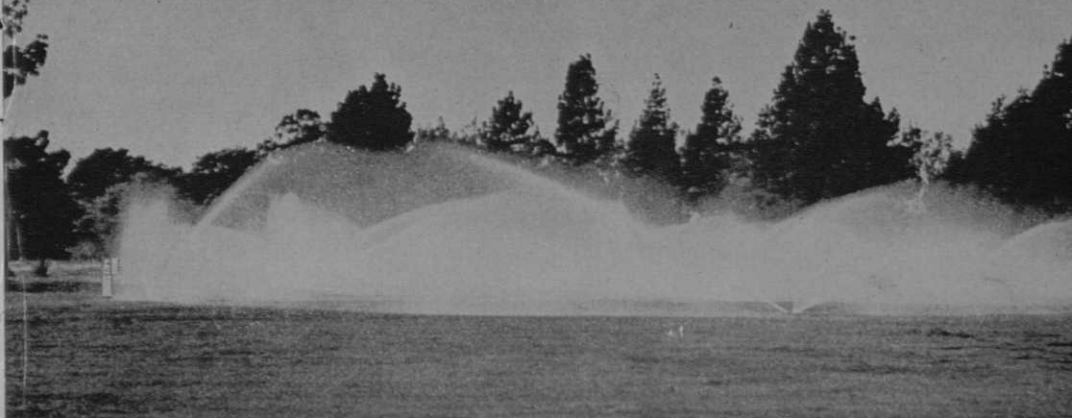
Have you tried
the
**MILORGANITE
SPREADER?**
- it's Fast,
- Accurate,
- Dependable!

**GOLF CLUBS
USE MORE**

MILORGANITE

**THAN ANY
OTHER FERTILIZER**

5,997,200 Yards of Fairways Are Buckner Irrigated



Buckner rotary pop-up sprinklers with automatic controls are used to irrigate the Brentwood Country Club, Los Angeles, California.

Buckner sprinklers, valves and couplers were installed on the world's first hose-less golf course irrigation system at Pebble Beach, California in 1912.

Today Buckner sprinkler systems are providing better turf and better play on championship golf courses all over the world. Install genuine Buckner sprinklers, key to successful irrigation and better golfing for your members.

Distributors in all principal cities. Look in the yellow pages under "Sprinklers."



MANUFACTURING CO., INC.
P. O. Box 232 Fresno 8, California

W o r l d W i d e D i s t r i b u t i o n



STANDARD'S

**FINEST
QUALITY**

Laminated

WOOD FLAG POLES

Standard's Laminated wood poles are the favorite of those players who prefer a "Bulkier" pole for a target. Adding a slim putt-saver ferrule provides a total 8 ft. length to meet USGA.



PUTT-SAVER FERRULES — available for wood poles or aluminum poles.

STANDARD MFG. CO.
CEDAR FALLS, IOWA

mon Village developers, Volk-McLain, in Nov. . . . Chet Shull heads group planning to build 18-hole Elkhorn GC in Stockton, Calif. . . . Group headed by Aldino Vannini also plans to build course in Stockton.

Jim Bradley, owner of Alma (Ark.) News Herald, and Dr. J. N. Thicksten are co-chmn, of Chanticleer CC that is planning to build 9-hole course in Ft. Smith area . . . James M. Barr, S. Main st., Santa Ana, Calif., and associates to build Whispering Palms CC and subdivision on 800 acres near Rancho Santa Fe . . . Whispering Palms to have 18 conventional and 18 Par 3 . . . Harry Rainville is architect.

Riverside G&CC organized by C. F. Adams and others to operate golf club at Macon, Ga. . . Ft. Wayne, Ind. 18 at Shoaff park will open this summer . . . Another municipal course at McMillen Park will be in play in 1962 . . . Oakdale (Calif.) G&CC opened for play . . . Floyd Hord is pro.

Partridge Creek GC 18 in Mount Clemens, Mich., owned by John H. Matthew and other residents of Mt. Clemens, puts course in play . . . Vince Williams is supt.

See how many more jobs one man can do in one day...with the **RYAN Rollaire** and **RYAN Ren-O-Thin**



● These rugged, precision-built machines with self-propelled action do more turf maintenance jobs . . . do every job faster, better, and more economically than other methods . . . give you beautiful turf with minimum effort.

Remove "thatch" that blocks out air and moisture. Thin dense turf for healthier growth. Remove low-growing weeds your mower misses. Use to scratch topsoil for better results from seeding, fertilizing.

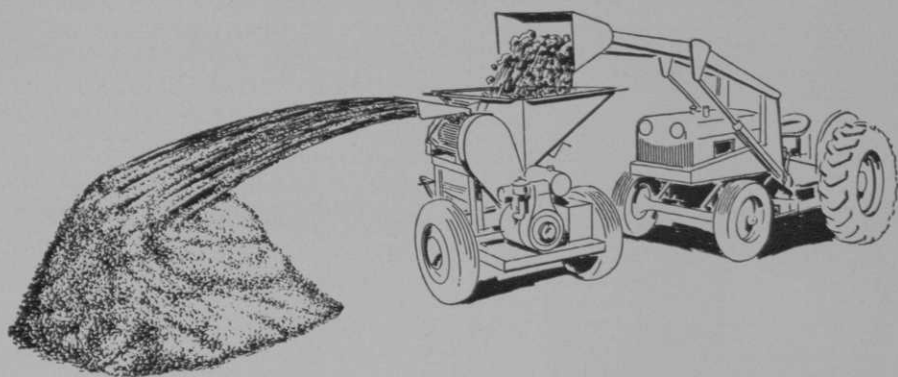


To maintain... improve... restore fine turf, write:

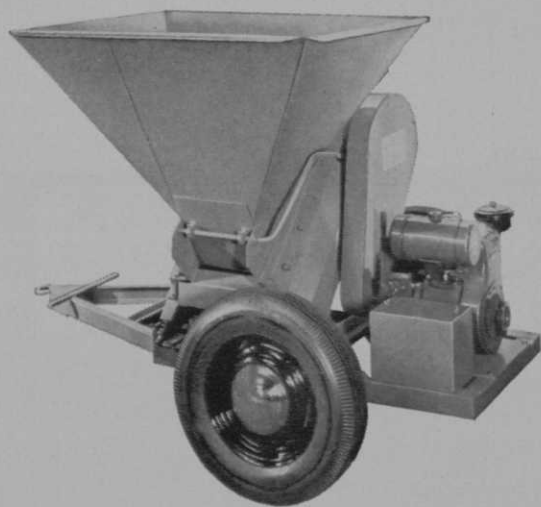


**LANDSCAPING
EQUIPMENT CO.**

871 Edgerton St., St. Paul 1, Minn.



Mechanization! Savings! ROYER



Royer Shredder Model 16, with Batch Hopper. Capacity up to 20 cu. yds./hr.

A Royer Shredder blends, mixes and aerates your materials. It removes sticks, stones and other refuse you don't want and delivers the fluffed, textured mix you must have to build or renovate your turf—at a real savings in cost.

There is no need to tie-up your manpower when processing your soil mixes. Now you can mechanize this operation with a shredder that fits your budget.

Bulletin S-61 gives all the facts on Royer's mechanically fed shredders. Send for a copy. It pictures and describes 24 models, with capacities up to 150 cu. yds. an hr.

ROYER FOUNDRY & MACHINE CO.

171 PRINGLE STREET / KINGSTON, PENNA.

EXPORT DEPARTMENT: 10406 South Western Avenue, Chicago 43, Illinois. Cable: ASMAN

ROYER

"Leaders in the Science of Soil Conditioning"



BENT GRASS STOLONS

- Washington (C-50) • Cohansey (C-7)
- Congressional (C-19)
- Arlington (C-1) • Toronto (C-15)

True to Name, Weed and Seed Free!

Send for Free Literature

We Ship Anywhere in the United States

Phone: KE 1-0361

HIRAM F. GODWIN & SON

22366 Grand River Ave., Detroit 19, Mich.

A Reliable Source of Supply Since 1920

. . . Whispering Lakes CC, Ontario, Calif., opens \$2,000,000 plant . . . Ford E. Seward is gen. mgr. . . Re-open Olathe (Kans.) CC 9-hole course after new owners rebuilt it . . . John Nash is pro-mgr.

Minnreg Veterans, Inc., a group of Minneapolis-Honeywell employees, buys 439 acres about 18 miles from Minneapolis and intends to build course and other recreation facilities . . . Bushfield Plantation, Westmoreland Co., Va., home of John Augustine Washington, younger brother of George Washington, bought by Warren Van Kirk, Washington, D.C. real estate developer, and group of Pittsburgh men who plan to build 18-hole course . . . Mt. Vernon CC in Washington, D.C. dist., opens its 18 . . . Maurice G. Herndon, Westgrove, Va., is pres.

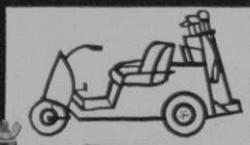
Phosphate mining companies in Florida have Land Use and Reclamation committee which is considering golf course construction similar to the job International Minerals and Chemical Corp. is doing on a mined-out area . . . Totton Heffelfinger, former pres., USGA, heads Executive GC, building 18-hole standard and 18 Par 3 on 1,400 acres 23 miles from Minneapolis . . . Deluxe suburban development will surround the course

REPLACE WITH **BOWERS**

BIG RAM

BATTERIES

... and end your **GOLF CAR**
BATTERY Troubles



Forty years' experience building quality batteries for battery-driven equipment—industrial material handling trucks, mine locomotives, mine shuttle cars—is built into every Bowers Golf Car Battery. You can be certain your turrent battery problems will end when you change to Bowers Big Ram Batteries. Their Extra Quality means Greater Power, Longer Trouble-Free Life . . . and at a lower initial cost.

BOWERS

BATTERY & SPARK PLUG CO., READING, PA.

PLANTS AT: Reading, Pa., Greer, S.C.; New Philadelphia, Ohio

BRANCHES: Macon, Charlotte, Baltimore, Philadelphia,

New Haven, Buffalo, Pittsburgh



Agrico Fieldman Jean Roche (left) and Greenskeeper Roger Vezina examine thick, healthy turf that was fertilized with AGRICO and AGRINITE.

***“Agrico and Agrinite
gave our greens better color
and thicker growth”***

*says Roger Vezina, Greenskeeper
Royal Quebec Golf Club at Boischatel, Montmorency, Quebec*



“We compared three different brands of fertilizer on three greens to see which one would give us the most beautiful turf. Applications were made on the 7th day of June.

“As the season progressed, we noticed that the green fed with AGRICO 10-6-4 U.F. and AGRINITE showed better color and thicker, healthier growth than the greens fed with the other brands of fertilizer.”

Healthy, dark-green, deeply-rooted turf on greens, tees and fairways is the result many American and Canadian turf specialists are getting with the Agrico Program. The Agrico Soil Service will be pleased to recommend a balanced feeding program to fit the particular needs of your course. There's no charge or obligation. But you'll have plenty of reason to be proud of the results

See your regular supplier or write

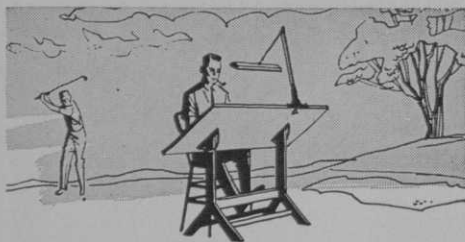
The American Agricultural Chemical Company • 100 Church St., New York 7, N.Y.
In Canada, Agricultural Chemicals Ltd. • 1415 Lawrence Ave., W. Toronto 15, Ont.

AGRICO®

America's Premier Golf Course Fertilizer

AGRINITE®

the better Natural Organic Fertilizer



FREE SPRINKLER PLAN SERVICE

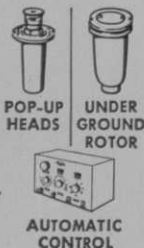
Save time and money—with Thompson free sprinkler system plans. Includes layout, specifications, and equipment cost.

Fifty years' experience make Thompson the accepted leader. A complete line of precision-engineered equipment means lower installation costs, easier maintenance, savings in water.

Write for "Plans Guide"



Thompson Manufacturing Company
2251 East Seventh Street
Los Angeles 23, California



which is being built to plans of Robert Trent Jones . . . There are 400 corporate memberships in the club . . . Jones is talking about a nationwide chain of Executive Golf Clubs.

Andrew W. Gatenbey and Horace G. Barnhart of the Chicago Dist. GA arranged with the Chicago White Sox Management to get 5,000 caddies into the White Sox's night game with the Kansas City A's on July 18 . . . 52 applications for enrollment in the golf school, sponsored jointly by the Ladies PGA and the University of Michigan, had been received by mid-July, according to Barbara Rotvig of the U of M physical education dept. . . . School dates: Aug. 7-11 . . . Stan King is the new supt. at Dearborn CC, Aurora, Ind. . . . Midwest GCSA's annual fall clinic again will be held at Olympia Fields CC, probably on Dec. 5-6 . . . Charlie Martin has been named supt. of Calumet CC, Chicago Dist., succeeding Paul Voykin who moved over to Briarwood CC . . . Martin assisted Warren Bidwell at Olympia Fields before moving up.

Seventh Senior Amateur of the USGA to be played Oct. 2-7 at Southern Hills,
(Continued on page 75)

\$AVE

10% to 25% on your golf course supplies

WE SHIP DIRECT

A complete line of —

LIQUID FERTILIZERS

FUNGICIDES

INSECTICIDES

HERBICIDES

WETTING AGENTS

Suppliers to the golf course trade since 1939.

Write for Catalogue

American Liquid Fertilizer Co., Inc. • Rokeby Chemical Co.
Marietta, Ohio • P.O. Box 267 • Phone: FR 3-1394

SUPERIOR TURF... BY *Warren*

Warren's SCIENTIFIC RESEARCH AND DEVELOPMENT PROGRAM, PLUS YEARS OF EXPERIENCE, PRODUCE THE FINEST SOD AND STOLONS.

Here's the answer to your search for beautiful long-wearing tees and uniform greens. Warren'SOD and STOLONS, produced under rigid and controlled growing processes, gives you quality turf—uniform in color and texture, healthy, vigorous and hardy for the full playing season and for future seasons. Warren's modern, up-to-date research and development program provides the very latest in scientific turf developments.



Laboratory for Study and Culture of Grass Diseases.



Bent Increase. Light Study. Inoculation Chamber. Bluegrass Twins.



500 Vegetative Selections of Bluegrass Plants Under Observation for Disease and Structural Characteristics.

DELIVERED ANYWHERE

Warren's

TURF NURSERY

WORLD'S LARGEST AND MOST EXPERIENCED GROWERS OF SOD AND STOLONS.

8400 West 111th Street
Palos Park, Illinois
(A Chicago Suburb)

Phone: G1bson 8-7200

PURITY OF STRAIN GUARANTEED

Warren unconditionally guarantees the following sod and stolons to be true in strain, perfect in texture, and uniform in color

Toronto C-15 Cohansey (C-7)
Washington (C-50) Pennlu (10-37-4)
Merion & Kentucky Blue Grass, Fescue
& Meyer Zoysia

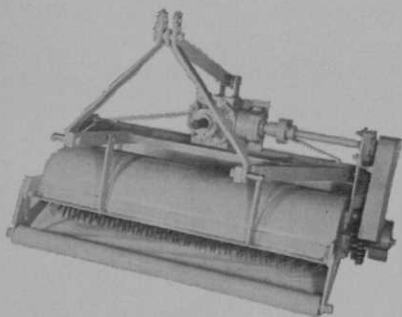
For Fairways and other large turf areas

Now, Aero-Thatch

Power take-off Model X-61



**AERO-THATCH X-61 reconditions fairways . . .
relieves compaction . . . reduces thatch, aerates
and cultivates . . . all in one simple operation !**



This is the machine that has been specifically designed to help you care for your fine turf areas. The X-61 power-take off model works with your regular equipment . . . to give fairways and other large grass areas that superb AERO-THATCH conditioning. In one simple operation, you Aerate, Cultivate, reduce thatch and relieve compaction with this extra-ordinary new machine. This is the C-H-I-A* method of ground control that so many fine golf courses are now using. Get the facts today.

**Continuous Horizontal Invert Aerification!*

Write for complete information to

AERO-THATCH, INC.
RAHWAY, NEW JERSEY