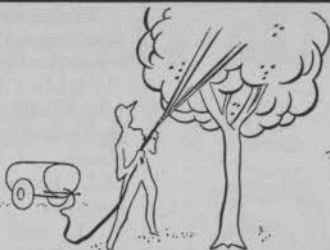


**FAIRWAYS**



**SHADE TREES**



**SHRUBS**



# JUST ONE SPRAYER

## does all your spraying jobs

Keep fairways weed-free—greens strong and healthy. A versatile Myers sprayer gives you fast application—keeps your course open to the golfers. Converts quickly and easily from boom to gun operation. Available in a wide range of models, with capacities from 10 to 20 GPM.

Special corrosion resistant finish. All Myers sprayer tanks are double protected with "Fire-Cured" Epoxy coating—lasts years longer.

**GET ALL THE FACTS**—See the Myers Sprayer Dealer nearest you—or write for free, illustrated folder number M-1514.



**The F. E. Myers & Bro. Co.**  
ASHLAND, OHIO      KITCHENER, ONTARIO

# New

## QUARTZLINE UNIT

The Par Light Mfg. Co. is proud to present to you the revolutionary new Quartzline unit. This Quartzline unit features the most powerful filament ever developed and manufactured by General Electric.

Here is a unit for which the sporting and industrial world has been waiting. It has taken General Electric over eight years to develop this source of light. It is far ahead of anything on the market today.

Because of the narrow light distribution available from these lamps combined with a specially designed reflector many applications can be lighted with amazing results.

Manufactured and distributed by ➤

Send for the 24-page brochure on complete construction services and all equipment for driving ranges, Par-3 & miniature golf installations.



GOLF DRIVING RANGES  
PAR 3 GOLF COURSES  
INDUSTRIAL AREAS  
SPORTING FIELDS  
AIRPORT RUNWAYS  
HOUSE TRAILER SALES  
USED CAR SALES  
MANY OTHERS TOO  
NUMEROUS TO  
MENTION

For specific information on your particular lighting problem please contact:

**PAR LIGHT**  
MANUFACTURING CO.  
MILAN, ILLINOIS

nine, was recently put in play.

Kentucky's Gov. Combs wants to have a course at every state park . . . Says tourists stay longer if golf is handy . . . "World's Championship" TV golf matches, which are completed in one hour, including commercials, require 6 to 7 hours to shoot . . . Carrollton G&CC, Eldersburg, Md., hopes to have its 18 completed in summer . . . George Conley of Fanwood, N. J., and Lex Lucas of Keyport, N. J., expect to open their Storm View GC 18 in July . . . Paul Falls succeeds Jack Twiss as pro at Dedham (Mass.) CC . . . Jack has retired . . . Talk about building Metropolitan (Boston) District Commission course near Saugus, Mass . . . Bill Slavik is the newly appointed pro-mgr. of Bidwell Park GC in Chico, Calif.

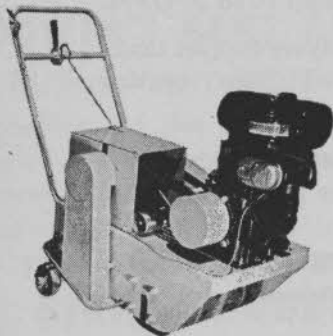
Sam Eig plans to build 18-hole course adjoining his \$15 million apartment building and Motel Washingtonian near Gaithersburg, Md. . . . Mrs. "Dutch" Harrison who has visited a lot of golf clubs and who is a woman of excellent judgment and taste, says Rio Pinar CC clubhouse at Orlando, Fla., is most attractive small clubhouse she's ever seen . . . Robert Trent Jones designing 27 holes for Quail Hollow Club near Hartville, O., on estate of H. B. Stewart, Jr. . . . Quail Hol-

Ask Lafkins Lawn & Golf Supply Co.  
About C-H-I-A... Your AERO-THATCH  
Dealer In Westchester County, N.Y.

LAFKINS LAWN & GOLF SUPPLY CO.  
Mamaroneck Ave., White Plains, N.Y.



Westchester County, N.Y.  
and Lower Connecticut



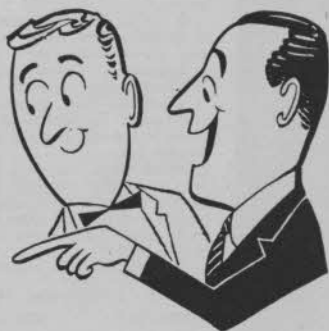
Let your AERO-THATCH dealer detail and demonstrate the C-H-I-A Method (Patent Pending) of controlling build-up of thatch, layering and compaction.

Investigate C-H-I-A with Aero-Thatch

**AERO-THATCH, INC.**  
RAHWAY, NEW JERSEY

*... Covers the Golf Course  
Like A "Blanket"*

**CLEARY  
PRODUCTS**  
*for*  
**BETTER  
TURF**



*Get ALL the Facts on the New Low Cost  
Cleary guaranteed Program for Disease and  
Crabgrass Control on BOTH Greens and Fairways*

**W. A. CLEARY CORPORATION**

NEW BRUNSWICK, NEW JERSEY

BELLEVILLE, ONT., CANADA

CHICAGO, ILLINOIS

**PMAS**

for Crabgrass and Turf Diseases

**THIMER\***

Mercury-Thiram fungicide and herbicide

**SPOTRETE\***

75% Dry Thiram Fungicide

**CAD-TRETE\***

Cadmium-Thiram Fungicide

**"ALL-WET"**

helps water penetrate compacted areas

**METHAR (DSMA)**

Disodium Methylarsonate herbicide; liquid  
and high concentrate powders

**SUPER METHAR**

Liquid Amine Methylarsonate herbicide

**CADDY**

Liquid Cadmium fungicide

**C-531**

Cadmium Zinc Copper Chromate fungicide

**PM2,4-D**

Phenyl Mercury - 2,4-D Combination herbicide-  
fungicide

**\*JET-O-MIZED**

to insure finer particles . . . no residue, no clog-  
ging. Better fungicidal action.

# STOP BALL MARKS ON GREENS

with this

## DIVOT FIXER

Let's see what punishment the greens must take. 20,000 rounds of golf means 20,000 shots to each green.

If 10% hit the greens it would mean 2,000 holes per green each year.

Repairing these holes an hour later or next day is useless. The damaged turf must be repaired at once to avoid a hole and brown spot.

Make your own test. Just try to repair an old ball mark. Then a new one.

Our little Divot-fixer tool can help you solve this problem.

Prices: for plain or imprinted as shown—

F.O.B. Des Moines, Ia.:

1000—\$65      500—\$35

250—\$20

Ten percent of order in small individual envelopes with printed directions. Extra envelopes one cent each.

Ten dollars extra for imprinting name of firm or club. Limit of 26 letters and spaces for upper; 29 for lower line.

**WOODSIDE GOLF & PARK SUPPLY CO.**

Des Moines 13, Iowa



ACTUAL SIZE

low will be private club with members mainly from Canton and Akron, O. . . . Schedule completion in August, 1961.

Don B. Campbell, supt. at Cherry Point (N. C.) Marine base course, is one of those versatile gentlemen who occasionally run into . . . He runs a 1½ hour disk jockey show every week, featuring traditional Dixieland jazz . . . He's also planning a one-hour Sunday show for the future in which only symphonic music will be played . . . Years ago, Campbell was a tympanist with the Boston Pops orchestra and later played with the National Symphony Orchestra.

Jock Anderson, a golf pro in the Chicago area for more than 30 years, died of an apparent heart attack in his shop at Bonnie Dundee GC, Feb. 19th . . . He operated the course with Anuta Harms . . . Born 71 years ago in Scotland, Jock migrated to Valparaiso, Chile, in 1910 where he laid out a course and served as a pro . . . In 1937 he took over operation of a course in Northbrook, Ill., and 12 years later moved to Bonnie Dundee.

Fifty of 64 seats on the airliner that is going to take Chicago Dist. GA supporters to Augusta for the Masters were taken as

# TURF that Speaks for Itself!

## A TRIO OF THE GRASS GROWING PRIESKORNS

Brother George in the center is senior member of the clan. He is in charge of all maintenance at Burroughs Farms Country Club Resort in Brighton, Michigan.

Elmer, on the left, is Golf Professional at Pine Lakes Country Club where Earl, on the right, does an outstanding job of growing fine turf.

Not in the picture is Brother Bob at Western Golf & Country Club, and George's son, Jerry, who is assistant Professional at Pine Lakes.

The entire Prieskorn clan are firm believers in MILORGANITE — using several carloads each year in the greater Detroit area.

Turf Service Bureau



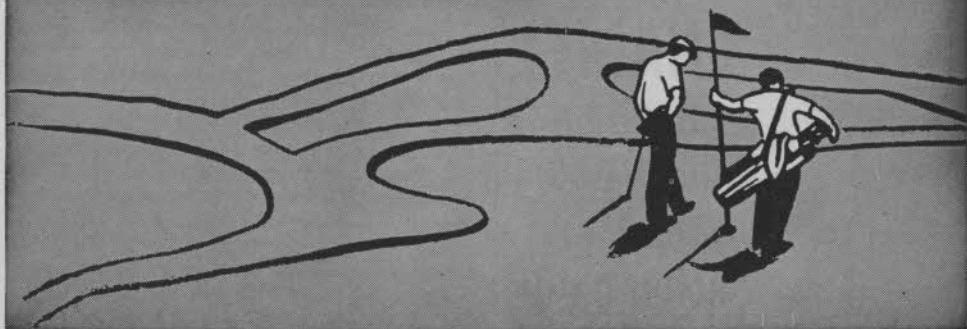
THE SEWERAGE COMMISSION, MILWAUKEE 1, WIS.

GOLF CLUBS  
USE MORE

# MILORGANITE

THAN ANY  
OTHER FERTILIZER

# Why not green fairways?...



## Use **YARDLEY K PIPE** for a dependable water system .....

Yardley offers a complete service for designing, recommending and supervising the installation of your watering system.

You can have a long-lasting, dependable watering system, even on a modest budget. The ease and speed with which K pipe can be installed saves time and money. Reports show savings as

much as 50% to 75% of ordinary installation costs.

Yardley K pipe is made of high-tensile, high-temperature Kralastic material. It can't rust, rot or corrode; it is light weight—about  $\frac{1}{8}$ th the weight of iron pipe—yet offers up to 40% less friction or pressure drop.

Let us estimate your requirements.

**MAIL THE COUPON TODAY.**

**YARDLEY PLASTICS CO.**

142 Parsons Avenue  
Columbus 15, Ohio

Please send complete details on Yardley K Pipe

NAME \_\_\_\_\_

POSITION \_\_\_\_\_ CLUB \_\_\_\_\_

ADDRESS \_\_\_\_\_

CITY \_\_\_\_\_ STATE \_\_\_\_\_



**YARDLEY PLASTICS CO.**  
142 PARSONS AVE. • COLUMBUS 15, OHIO



# RAMUC<sup>®</sup> ENAMEL

used on  
more pools  
than any  
other paint

Ramuc is America's leading pool paint — performance-proved in thousands of public and private pools. This fade-resistant natural rubber-base paint is easy to apply — gives a tile-like finish. Many lovely pastel shades. Stay with a time-tested product . . . don't make your pool a testing-ground for so-called new miracle finishes. Use Ramuc and watch attendance figures rise, upkeep costs drop. Send for free 32-page "Handbook on Painting Swimming Pools." To get this valuable book, be sure to include pool dimensions, whether built of concrete or steel, and type of paint now on pool.



**INERTOL CO., INC.**  
Swimming Pool Division  
479 Frelinghuysen Ave., Newark 12, N. J.  
27-Y South Park, San Francisco 7, Calif.

of Feb. 28th . . . Five years ago the New Jersey State GA sent one caddie to college on a four-year \$2,000 scholarship . . . Today the association is helping 18 boys through Rutgers and expects to increase this to 23 in the fall . . . 83 member clubs and individual benefactors make this possible . . . New Jersey's State Open will be played at Knoll GC, Boonton, July 14-16 . . . It will be the 40th renewal of the event and \$5,000 in prize money is being offered.

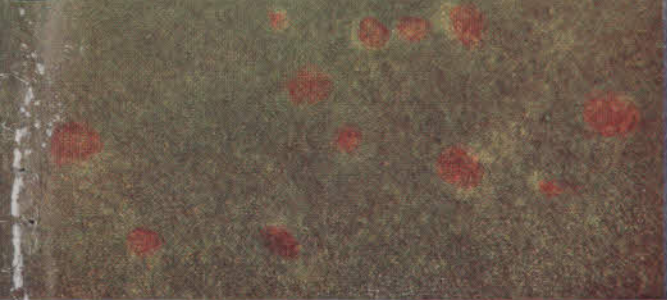
Don Pritsch is new pro at Mt. Tabor (N. J.) CC . . . He's a former captain of the Seton Hall golf team and has been working toward a head pro job since 1951 . . . He formerly was an assistant to Fred Baker at Maplewood . . . Ray Ferguson has gone from Ridgewood to Essex Falls, N. J., where he is assistant to Stan Mosel . . . New course planned for Belle Mead, N. J. . . . It's to be called Pike Brook and will have 18 holes . . . Course is expected to be ready in spring of 1961.

D. I. Sewall, Mountain Lakes, N. J., a retired course architect, died in mid-February at the age of 77 . . . He designed several courses in the East including Braidburn in Madison, Blair Academy course and Lake Mohawk, all in New Jersey . . . Years ago he wrote numerous articles on turf for sports and agronomy magazines . . . Mrs. Rose Z. Chezzi, mother of Vic, well known pro who won the PGA Championship in 1941, died in Rumson, N. J., in February at the age of 75.

Golf course Supts. Association's plan to prepare standard specifications for golf course construction might be one of the best things that can happen for qualified golf architects as well as course owners, according to some architects . . . Not unusual now for architects to be expected to build first class courses on sites where first class maintenance is impossible . . . There are wide variations in fees for designing and building courses often due to great differences in standards of construction, agree many architects and supts.

Newspaper stories sometimes refer to new courses as being built to "USGA or PGA specifications" . . . There are no such specifications . . . The reference is merely an uninformed generality about design . . . "GCSA specifications," if the supts' organization is able to prepare practical minimum specifications, ought to mean something of value to golf . . . Supts. at GCSA Houston annual meeting said millions of unnecessary annual maintenance expense and futile efforts to get and keep courses

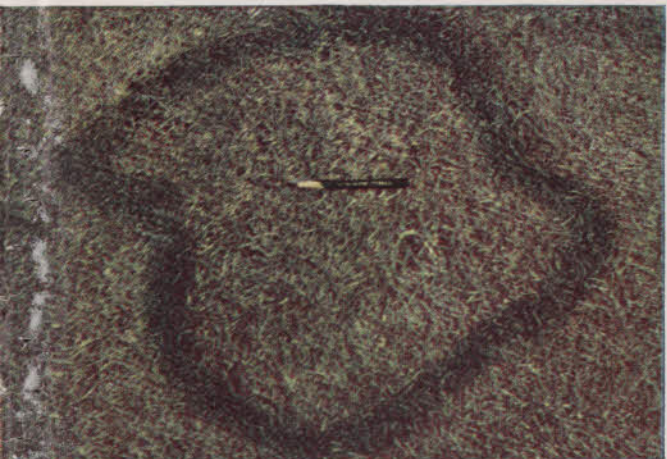




COPPER SPOT



HELMINTHOSPORIUM



BROWN PATCH ▲

▼ RED THREAD



**STOP 5**  
**MAJOR**

**TURF**

**DISEASES**

**WITH 1**  
**FUNGICIDE...**

BROAD-SPECTRUM  
**kromad**®



DOLLAR SPOT



# kromad

# 4

PROVED OVER YEARS  
on thousands of golf courses

#### ORDER YOUR KROMAD NOW!

If you aren't one of the thousands of superintendents who have already proved the benefits of a preventive program with KROMAD, the original broad-spectrum fungicide, don't delay any longer...see these benefits on your greens now.

#### PREVENTS FIVE MAJOR DISEASES

Spring, summer and fall...thousands of golf course superintendents now depend on KROMAD. Dollar spot, copper spot, red thread, brown patch or leaf blights such as those incited by *Helminthosporium* and *Curvularia*...KROMAD stops them all.

Call your MALLINCKRODT DISTRIBUTOR today for prompt service on KROMAD and other turf supplies.

*Mallinckrodt*<sup>®</sup>

#### MALLINCKRODT CHEMICAL WORKS

Mallinckrodt St., St. Louis 7, Mo. • 72 Gold St., New York 8, N. Y.

CHICAGO • CINCINNATI • CLEVELAND • DETROIT • LOS ANGELES  
PHILADELPHIA • SAN FRANCISCO

In Canada: MALLINCKRODT CHEMICAL WORKS LIMITED—MONTREAL • TORONTO



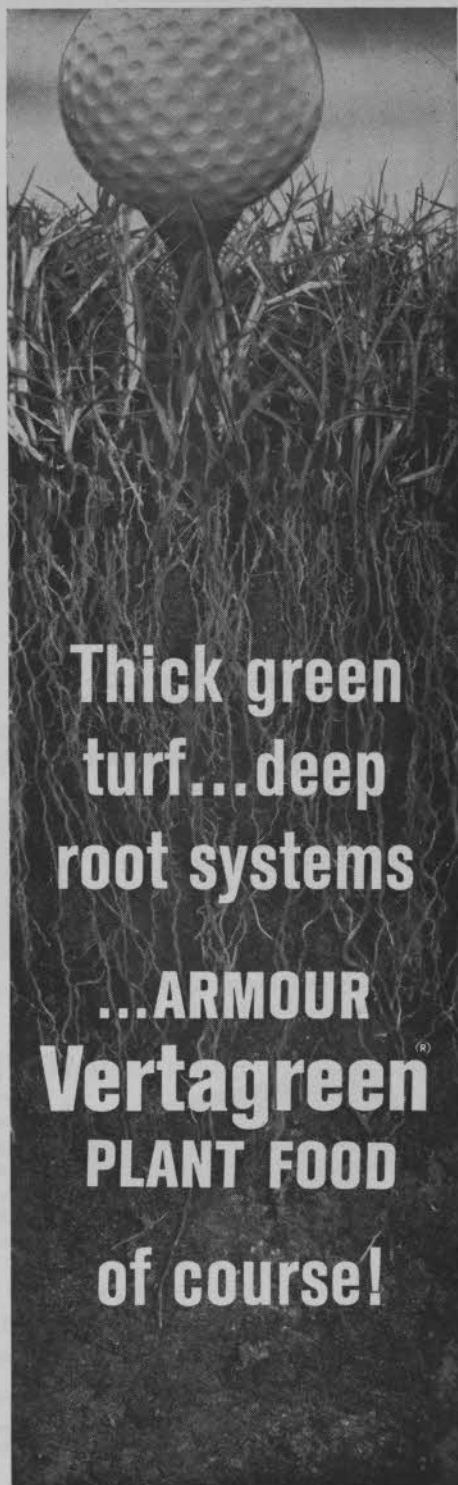
in good condition are result of improper construction.

Salt Lake City commission approves by 4 to 1 vote, over objection of mayor, J. Bracken Lee, to complete Mountain Dell muni course . . . About 500 citizens attended one of biggest, liveliest sessions ever held in the commission's chambers to push for new course completion . . . Sale of Forest Dale, old muni course, was expected to pay for 18 at Mountain Dell and 9 at Rose Park . . . Hack Miller, Salt Lake Desert News sports editor, commenting on Mountain Dell case said, "The mayor will learn that no other department of city government is so exacting in its bookkeeping and auditing as the city's golf courses whose figures are matter of detailed public records."

Par 3 course building boom grows . . . Some of these popular nurseries are in public parks . . . Looks to us as though the design of most of them has been especially mindful of player's safety . . . Design and construction of these courses present problems of minimizing compaction from heavy traffic . . . Another feature of golf's building program are number of courses adjacent to airports — Sterling, Colo., Fairmount CC in Chatham County, N. J., Santa Maria, Calif., and Santa Barbara, Calif., are among the airport golf course municipal and private projects.

The course and motel and the course and real estate development tieups are accounting for a large percentage of new course projects . . . Some amazing examples of what course construction, on land absolutely not worth a damn for almost any other purpose, has done to establish attractive residential character and high value of adjacent property . . . Bad feature of this is that the courses will be heavily burdened by taxes on values that the courses create.

North Hills GC building two 18's to design of Robert Trent Jones at Manhasset, N.Y., because high taxes forced it to sell its property at Douglaston which will be vacated by club at end of year . . . Douglaston property sale financed North Hill's new \$2½ million plant . . . Cedarbrook CC (Philadelphia dist.) to build \$1½ million course and clubhouse on 210 acres near Blue Bell, Montgomery County, Pa., with money from sale of its 150-acre present club site where a \$50 million apartment, hotel and shopping center will be built. . . . Sale was delayed by members' disagreement over ownership of club . . .



**Thick green  
turf...deep  
root systems**

**...ARMOUR**

**Vertagreen<sup>®</sup>**

**PLANT FOOD**

**of course!**

# BAKED ENAMEL SIGNS

**NO CARTS**  
*Permitted*  
**ON TEES**  
HELP US MAINTAIN THIS COURSE  
FOR YOUR ENJOYMENT

**NOTICE**  
DO NOT PULL CARTS  
ON APRONS OF GREENS  
OR ACROSS TRAPS...  
**— GO AROUND —**

**\$100 REWARD**  
FOR INFORMATION LEADING  
TO ARREST AND CONVICTION  
OF ANYONE BEFACING OR  
DAMAGING THIS PROPERTY

**NO  
TRESPASSING**  
UNDER PENALTY OF THE LAW

**CARTS**  
→

30 gauge metal  
white background

**\$13.20 DOZ.**

POSTPAID

Approximate size  
of top 4 signs

10" x 14"

Specify left or  
right arrow

Bottom sign

5" x 12"

Send check or  
Money Order

Write for prices on  
quantity signs — all  
same copy for Building  
Trades - Real Estate -  
Motels, etc.

**MODERN SIGNS** — 3408 N. Cicero Ave.,  
Chicago 41, Ill. Phone: PEnsacola 6-2924

Members agreed on plan recommended by a court.

Tommy Murphy, goes from asst. job with Jack Grout at Scioto CC, Columbus, O., to pro job at Lancaster (Pa.) CC succeeding A. B. (Abe) Thorn who retires after 26 years there . . . Murphy also has been asst. to Willie Goggin, Elmer Voight and Herman Barron . . . Murphy's teaching under Grout, especially in Junior program which had Jack Nicklaus as a pupil, was big factor in getting him the Lancaster job . . . Bus tours to courses in Texas and Mexico following USGA Green Section meeting in New York and GCSA conference in Houston gave 25 New England supts. a broad view of golf maintenance and a prolonged business study program.

Walnut trees at Modesto (Calif.) Dryden Park muny course were auctioned to furniture manufacturers . . . New Orleans talking about putting an Open tournament on Ladies PGA program in fall . . . The women pros are steadily increasing their draw . . . Smart golf and smart grooming have extended gallery interest and earning capacity of the girls . . . Winter of heavy snows, quick melting saw considerable play by snowbird golfers at middle Atlantic and

## 3-SECTION ROLLER

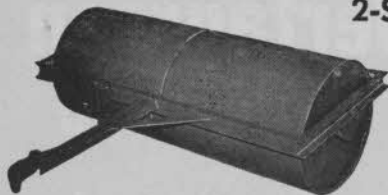
Shipping weight, 480 lbs.

An 80 inch roller with full oscillation for all sections. Water ballast 12-gauge welded steel rollers with rounded edges. Sand and dirt resistant alemite equipped hardwood bearings. Filled weight 600 lbs. per section. Frame of heavy welded steel construction complete with ball type hitch and mud scrapers. Painted rust resistant dark green.



## 2-SECTION ROLLER

A compact easily stored five foot water ballast roller of simple rugged construction. Welded and tested 12 gauge steel rolls with rounded edges. Grease fitting equipped, replaceable hardwood bearings. Welded steel frame complete with ball type hitch and mud scrapers. Filled weight 1200 lbs. Painted rust resistant green. Shipping weight 325 lbs.



Also, we have five-section rollers

For fast, clean-plug aerifying — **THE NIGHT CRAWLER** — now available — plugging 1/2" holes spaced 2 inches by 3 inches apart.

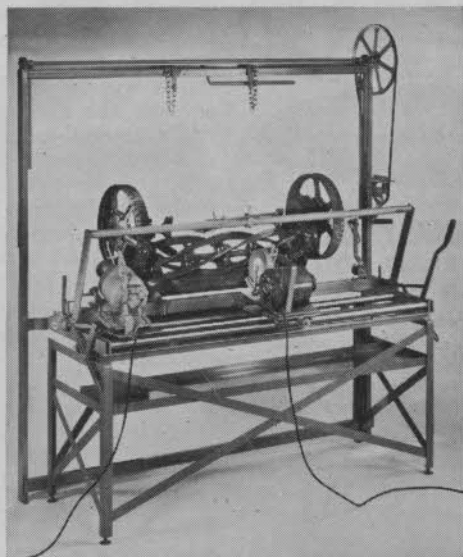
Write for nearest dealer's name or write us direct

**BERRIEN TOOL & DIE CO. Eau Claire, Michigan**

# TWO HEADS ARE BETTER THAN ONE!

EVEN WHEN IT COMES TO SHARPENING LAWN MOWERS

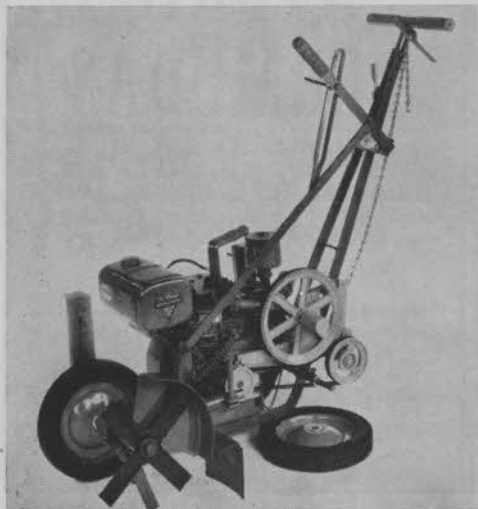
IF IT  
ISN'T A  
MODERN  
IT  
CAN'T  
BE MODERN



COMPLETE  
AS SHOWN  
IN PHOTO,  
SHARPENS UP  
TO 53" WITH  
DUAL  
GRINDING  
HEADS AND  
ELEVATOR,  
COMPLETE  
\$550.00

## NEW MODERN PROFESSIONAL SHARPENER HAS TWO GRINDING HEADS AND A GRINDING AREA OF 53 INCHES.

The latest Modern Professional Lawn Mower Sharpener is one of three models that can handle the smallest or the largest gang or fairway mower made. The Professional Model has two grinding heads. One enables you to sharpen the reels and the other head the bed knife. You can do all this without taking the mower off the sharpener, or dismantling it. In addition you can also adjust the mower while it is in the sharpener. 14 major improvements have been made in this unit to help you set-up faster and save you time on the actual sharpening. Send for complete specifications today.



## EDGE SAND TRAPS WITH MODERN'S POWER DRIVE EDGER

Here's the easy way to edge your sand traps, flower beds, sprinkler heads and driveways. The Modern Power Drive Edger is a heavy duty rugged machine that can do a full days work day in and day out.

You'll save money, time and come up with a better job. (If you have a Modern Edger the Power DRIVE Attachment can be purchased separately.)

## MODERN MFG. COMPANY

160 No. Fair Oaks Ave., Dept. GD  
PASADENA, CALIF.



**BUCKNER  
SPRINKLERS**



**IRRIGATE EFFICIENTLY  
and CONSERVE WATER**



**ADJUSTABLE  
GEAR-DRIVEN, ROTARY  
POP-UP SPRINKLERS**

Buckner's exclusive adjustable feature gives full water utilization for best irrigation. Designed for automatic or manual systems. Three full and three part circle sizes.

**NEW**

**SUPER CAPACITY  
ONE-PIECE  
QUICK-COUPLING  
VALVE**

reduces water hammer

Extra large water capacity gives better flow control of water while less pressure loss means a more efficient system. Only fool-proof, one-piece valve on the market.



**SPEED  
REGULATOR**

gives best single  
line turf irrigation

Another Buckner exclusive for tailor-made water coverage. Fingertip adjustment puts more water where sprinklers do not overlap, less where they do.

See Your Local Buckner Dealer  
He's listed in the yellow pages.



**BUCKNER**

**MANUFACTURING CO. INC.**  
P. O. Box 232 Fresno 8, California

northeastern courses . . . Very little winter golf on midwestern courses . . . Players never have gone for it.

Judging by pro, advertising agency and TV station requests that Golfdom and Golfing have received for program material, the coming spring and summer will have record number of TV shows featuring local pros . . . Some of these local shows will be out on the air just before or after the nationwide TV competitions . . . One of the healthy things about current golf boom is the many "do it yourself" courses in small towns . . . For instance, the Fabens, Tex., club of which the Fabens Independent says, "The course has developed from a sand and mesquite area to a fine recreation spot."

Kissing Camels GC to open 18 holes this spring at Garden of Gods near Colorado Springs . . . Press Maxwell designed and built it for A. G. Hill of Dallas . . . It's surrounded by residential sites . . . One of the most beautiful course sites in the U. S. and Maxwell has done a great work of golf art on it . . . This is one of those achievements that can be marred by a landscaping plan that doesn't look entirely natural.

New Britain, Conn., honors Stanley GC pro, Stan Pisk, as the city's "Sports Man of the Year." . . . Pisk, 17 years pro at Stanley, was combat hero in World War II . . . Jack Emich of Baltimore CC new pres., Maryland State GA . . . At the Maryland

**HYBRID  
BERMUDAS**

Tifton 328 Tifton 57-127  
EVERGLADES 1 U-3 — ORMOND

**GROWN ON CLEAN  
WEED-FREE SAND**

There are many reasons why this firm has supplied more improved Bermudas to golf courses than all competing GROWERS combined. Contact us for your requirements, responsible information and recommendations.

**PATTEN SEED & TURFGRASS CO.**  
Lakeland, Ga.