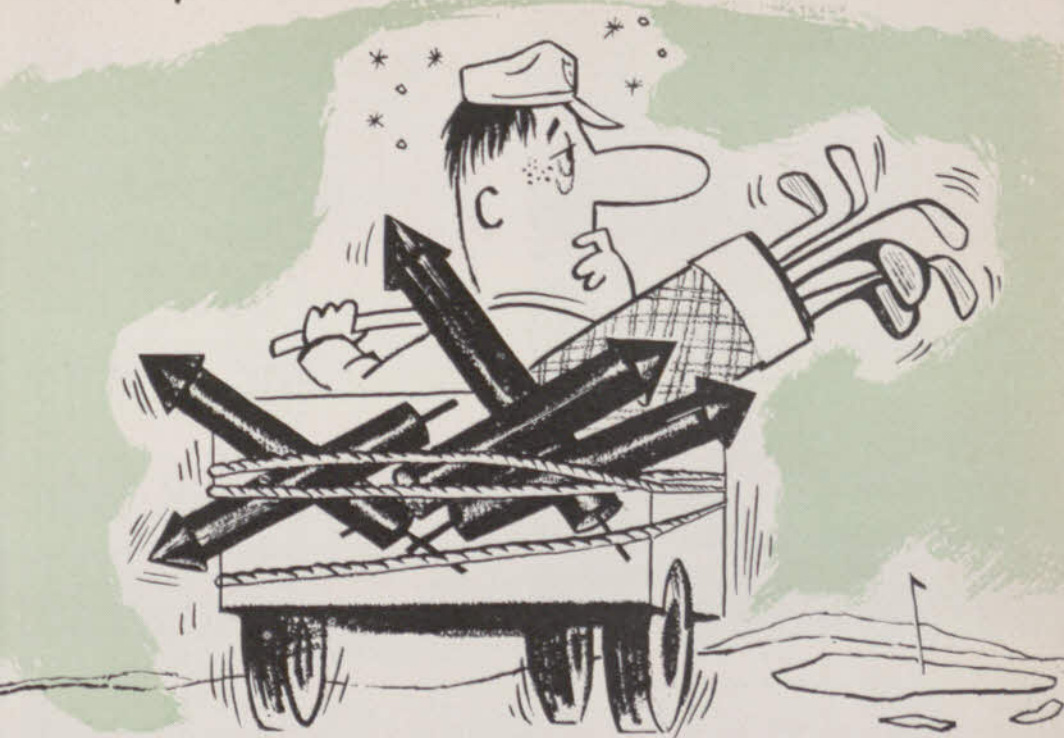


Worry Worrth hasn't heard about the NEW WILLARD!



DEEP CYCLE PLATES make
new Willard Electric Cart Batteries first choice for
longest service in golf car fleets!

Taking along a few rockets may be Worry Worrth's idea of sure-fire return power. But, it's so much easier, so much wiser simply to ride a golf car powered by the completely new Willard Electric Cart Batteries with DEEP CYCLE PLATES. Special plate construction makes these batteries better fitted to withstand constant discharging and re-

charging. Gives much longer service life. Here are batteries that will keep your cars moving over the course, reduce servicing time-outs, build extra rental income. Stage a test with your own fleet! To have the nearest distributor demonstrate, just write Willard Sales, The Electric Storage Battery Company, Cleveland 1, Ohio.



Willard
NEW HDD-2EC
ELECTRIC CART BATTERY



Good lie on this Puccinellia equals anything on the best fescue fairway.



Nitrogen fertilization enables grass to get foothold in salt covered soil.

TURF TIPS

from O. J. Noer

Puccinellia for Strong Saline Soil

The Utah Copper CC at Magna, U., has a bad fairway salt problem. The ground water is highly charged with salt from nearby Great Salt Lake. The water table is only 12 to 18 ins. below the surface. During warm weather upward movement of soil water by capillary action carries salt to the surface. Incrustations of white salt are extensive on all fairways.

The turf cover is improving greatly under a program of fertilization with the principal emphasis on nitrogen. At first glance the grass is mistaken frequently for a fine-leaved fescue such as chewings, Ilahee, or creeping red. The ball sets up exactly the same way as on the very finest fescue fairway.

Two Strains Found

The grass cover is Puccinellia distans, one of the so-called "salt grasses". There are two strains at least in the turf. One forms a dense cover of uniform texture. The other has a tendency to swirl and makes a slightly bunch type of growth. But the combination of the two types provides the kind of turf golfers like.

Bermudagrass is alkali tolerant. Magna is outside the Bermuda belt. It adjoins Salt Lake City and is too far north and located at an elevation too high for good Bermuda performance. Another drawback is a state law prohibiting its transportation into the state despite the fact that there may be some in the southern part.

Puccinellia distans is unquestionably more salt tolerant than Bermuda. It seems

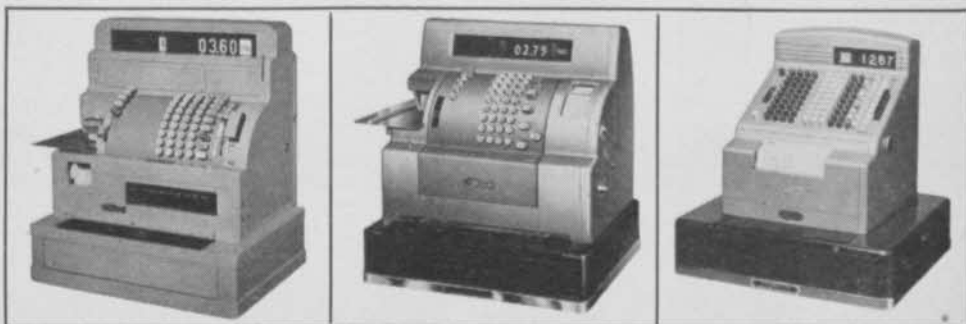
(Continued on page 74)

Here's Club Control

FOR EVERY DEPARTMENT

Hundreds of successful golf pros and club managers are streamlining their operations in shop, restaurant, bar and front office with the control of a modern National System. They are increasing efficiency by eliminating errors of mental figure work and lost charges — by protecting cash, merchandise, charges and other member services. Here are the Nationals they're using—the same machines that can work for you.

THERE'S A NATIONAL SYSTEM FOR YOUR CLUB, LARGE OR SMALL



For your front office this National controls all cash and charges, classifies transactions by departments, merchandise or services, and keeps accounts receivable up-to-date with minimum bookkeeping.

For your bar or cocktail lounge the new National "51" Bar Machine assures complete control of merchandise, money and charges while providing a sales audit without hand figure work.

For your golf shop this low-priced National automatically classifies sales, records stock numbers for tight inventory control, simplified bookkeeping.

ASK ALSO TO SEE NATIONAL'S DESK MODEL BOOKKEEPING MACHINES FOR BILLING MEMBERS AND FOR OTHER BOOKKEEPING NEEDS.

The money and overhead expense that a National System can save you will pay for its original cost in an astonishingly short time, then continue building *extra* net profits in your shop, bar, restaurant or front office. So phone your nearest National branch office today. A qualified representative will show you the right National System for each department of your club.

THE NATIONAL CASH REGISTER COMPANY

Dayton 9, Ohio

1039 OFFICES IN 121 COUNTRIES
76 YEARS OF HELPING BUSINESS SAVE MONEY

*TRADE MARK REG. U. S. PAT. OFF.

National*

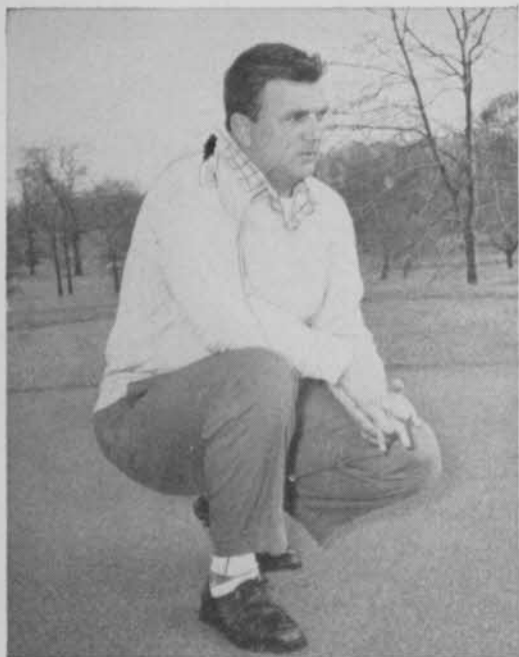
CASH REGISTERS • ADDING MACHINES

ACCOUNTING MACHINES

NCR PAPER (NO CARBON REQUIRED)

These superintendents find—

Du Pont Turf Fungicides keep even under the most ad



Tony Biddle, Superintendent

"I kept my greens free of disease with 'Tersan' OM through one of our worst seasons. I found it safe to use and compatible with insecticides and soluble fertilizer. By spraying 'Tersan' OM once a week throughout the season, I was able to control all diseases."

TONY BIDDLE, Superintendent
St. David's Golf Course, Wayne, Pa.

"Tersan" 75 has been proven by many years of superintendents' experience. The performance of "Tersan" 75 is regarded by many as the standard of excellence for disease control. It is mild on turf and offers a high degree of safety.

"Tersan" OM combines the proven effectiveness of organic mercury and "Tersan" 75 in one, easy-to-use turf fungicide. "Tersan" OM controls an extremely wide range of dis-



H. J. Elmer, Superintendent

"I recommend 'Tersan' OM to anyone who wants a safe, sure, all-purpose turf fungicide. I have used 'Tersan' 75 and 'Semesan' Turf Fungicide for over ten years with excellent results. This year 'Tersan' OM was tried on three greens with perfect disease control and no discoloration."

H. J. "BUD" ELMER, Superintendent
Indian Hills Country Club, Kansas City, Mo.

ease . . . saves time and labor by eliminating the need for tank mixing.

When weather conditions favor disease, superintendents all over the country have found that Du Pont turf fungicides give them an extra measure of protection . . . keep their turf healthy throughout the season.

Order your supply of Du Pont turf fungicides today!

Keep greens free of disease under adverse weather conditions



Otis Ratliffe, Superintendent



Gerald M. Dearie, Superintendent

"I find 'Tersan' 75 gives superior disease control in the Texas Gulf Coast country. It has enabled me to keep my greens free of disease and in top playing condition throughout the season. The ease of mixing 'Tersan' 75 is another important benefit."

OTIS RATLIFFE, Superintendent
Beaumont Country Club, Beaumont, Texas

"I can't say enough for 'Tersan' OM. During the summer of 1959, when weather conditions were very unfavorable for growing good turf, it proved to me it will knock out disease whenever it occurs. I give 'Tersan' OM credit for keeping my greens disease-free. It is also very easy to handle."

GERALD M. DEARIE, Superintendent
Medinah Country Club, Medinah, Ill.

On all chemicals, always follow label instructions and warnings carefully.



BETTER THINGS FOR BETTER LIVING
...THROUGH CHEMISTRY

TERSAN® OM TERSAN® 75
TURF FUNGICIDE TURF FUNGICIDE

SEMESAN® TURF FUNGICIDE

GRAU'S ANSWERS TO TURF QUESTIONS



Early Tournament

Q. — Last spring our club (125 members) managed to buy the land we had leased for several years and started plans for grass greens. We had no money but did have several members with ambition. Farmer members brought machinery, built bunkers and hauled rocks and gravel for a base. A friend gave us peat, another hauled it from Colorado and we borrowed a mixer. Compaction tests told us to mix 2 soil, 1 coarse sand, 1 peat. We placed 8 to 10 ins. on the greens, fertilized, and planted with Seaside Sept. 1. Weather was ideal and now only a few spots about 1½ ins. in diameter have yet to fill. We got a new greens mower and this spring we topdressed, leveled, and lowered the cut until they are ready to putt on.

Ordinarily we have a tournament in June with 150 entries. We have thought we may have to delay the event. Several members are eager to start playing the greens. Is there any way that we can take a hole cutter and check the greens to tell when they are ready for play? Some of us feel that we should let the root system develop before we start playing on them. Would you tell us your opinion of the earliest possible playing date? We understand that you are a graduate of the University of Nebraska. We felt that you would have a better idea of how fast this grass would develop in central Nebraska.

A. — With the good start you have, the careful preparation of the soil mixture, the good drainage in the base and your deep concern for deep roots there should be no real reason why you should consider postponing your tournament. Maintain a good level of nitrogen to keep the grass developing strongly. Bring the height of cut down to putting level as quickly as possible without scalping. Mow the greens every day — even twice a day when they are growing rapidly. Be sure the topdressing is weed free.

Water deeply and then let the surface become rather dry between irrigations. This will help to increase root depth. A dry putting surface can take much more abuse than one that is soggy. You may start putting on the greens as soon as they are fit to play on. It will be a good idea to have them in play before the tournament — the play will be beneficial.

If you have questions about turf care, please send them to Fred Grau (right) c/o Golfdom.

Poa Annua Control

Q. "We have the problem, as many courses have, of poa annua control. Is there any method of controlling this grass, chemically or in maintenance practice?"

We have Washington bent greens, bluegrass tees and fairways, with underground irrigation on tees, greens and fairways. The course is considered in very good shape but we do have that poa annua (North Dakota)

A. No new methods of controlling Poa annua have come to light. We expect to see Poa in Washington bent. They are natural companions. Do not fight Poa in the greens. Just feed the bent generously during its best growing season.

Bluegrass turf, irrigated and cut short enough for good tees and fairways, always can be counted on to have some poa. Best control is reduced irrigation and stepped-up fertilization when bluegrass is growing at its best. Arsenicals, used regularly, can reduce poa.

Change to Bent

Q. Our club recently completed installation of a watering system. The prevalent grass on the fairways is Kentucky blue with poa annua in the greens. As is so often the case upon installation of watered fairways, the thought of seeding the fairways and greens with creeping bent has been entertained. To assure proper healthy growth, what possible method would be best for the introduction of bent? Is there a particular seed recommended to withstand severe weather exposure? (Illinois)

A. Converting from Kentucky blue to creeping bent will be very costly. Subsequent maintenance will be infinitely more expensive. To have satis-

(Continued on page 89)

America's Prestige Shoe Comes to Pro Shops

J & M
JOHNSTON & MURPHY



Are you looking for top quality golf shoes that will appeal to your top income country club carriage trade? Here's welcome news! Now, at last, you can carry America's most respected name in men's quality footwear—Johnston & Murphy. They will be your fastest- and easiest-selling golf shoes. And here's why!

1. Completely planned selling program! Johnston & Murphy supplies you with a complete selling package. This includes mailing pieces, displays, ads, promotions and air mail order cards. We do everything. You do nothing—except wrap up sales!

2. Comprehensive in-stock! The widest range of golf shoes in America is at your service. More style—more styles—than you've ever had before! Sizes 6-13 in widths from AA-E.

3. 24-hour delivery! You make only a nominal inventory investment with Johnston & Murphy golf shoes. Reason? You send your order to Nashville—and it's filled inside of 24 hours!

4. Free display unit! Buy 7 sample golf shoes—any size—and get this arresting "eye-buy" display, shown above, FREE!

5. Mailing pieces! You can get a strong mailer that will sell for you almost automatically. Put one in every golf locker—and mail to the wife as a gift suggestion.

6. Big markup! On every pair of golf shoes you sell, you get a big profitable markup. Why delay? For information, write today to JOHNSTON & MURPHY / A GENESCO DIVISION, 511 Main Street, Nashville 3, Tenn.



A Mecca for Golfers—the Famous Scottish Resort.

TURNBERRY HOTEL

Ayrshire

with its championship Ailsa and Arran Golf Courses overlooking the sea and in the heart of the Burns Country, Near Culzean Castle. Also a miniature golf course, tennis courts, indoor swimming pool and a private cinema. Dancing.

OPEN ALL THE YEAR

Turnberry Hotel is adjacent to the international airport at Prestwick.

Full details may be obtained from the Resident Manager, Turnberry Hotel, Ayrshire, Scotland, or from British & Irish Railways Inc.:

*New York: 630 Fifth Avenue. Los Angeles: 510 West Sixth Street
Chicago: 39 South La Salle Street. Toronto: 69 Yonge Street*

BTC/369A

Portland Club Holds Annual "Hole-in-One" Dinner

Riverside G & CC, Portland, Ore., annually holds a "Hole-in-One" dinner for members who have been lucky enough to score an ace on any course in the U. S., or



These six couples annually have dinner as "Hole-in-One" guests of Riverside. (Front row, l to r) Mrs. E. P. Erland, Mrs. E. W. Davis, Mrs. J. L. Monahan and husband. (Second row) Erland, A. B. Williams and Mrs. Williams, Dr. Davis, Mr. & Mrs. M. M. Headley and Mr. and Mrs. H. R. Norcross.

for that matter, the world. This is an invitational affair and currently takes in a total of 77 men and women members. Six married couples qualify for the bids. So

far as is known, no other club in the country holds a similar event.

Year-Around Play

Riverside is one of six private clubs in Portland and except for occasional severe snow storms is playable the year around. There are no hills to climb and from many of the tees and fairways Mt. Hood, Mt. St. Helens and several other snowcapped mountains can be seen. The club boasts of nearly 275 women players and Junior enrollment, including both boys and girls, numbers more than 150. In recent years, play by women and children has increased to the extent that it has been necessary to make extensive additions to the clubhouse and lockerooms.

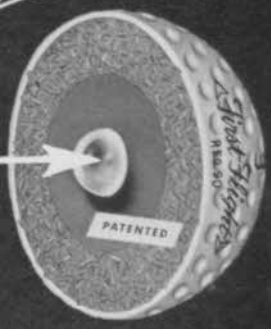
CDGA Campaigns for Uniform Tee Settings

In a recent bulletin, the Chicago Dist. Golf Assn. called attention to the lack of uniformity in tee settings at courses in its area. It was recommended that for everyday play settings be made in three different arrangements: $\frac{1}{3}$ in front; $\frac{1}{3}$ in the middle; and $\frac{1}{3}$ at the back. It was suggested that for record purposes, tees be divided into A, B and C sections to correspond with front, middle and back locations.



First Flight
STEEL POWER
CENTER

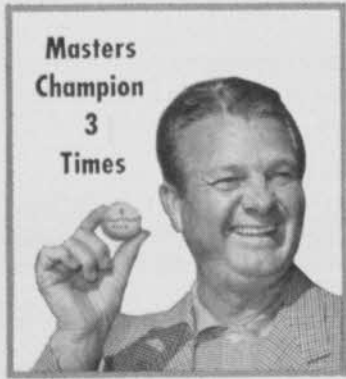
Golf Ball



SO GREAT...
IT'S PATENTED!
U. S. PATENT NO. 2,914,328

60-4

Sold ONLY in your Pro Shop.
Watch for this display of the new First Flight Patented
Steel Power Center Balls . . . great NEW finish, too!



"Greatest Ball I ever played"
—Jimmie Demaret

A golf ball spins in flight. If it is not in perfect balance it will wobble, fade or drift.

Extra weight concentrated exactly in the center makes First Flight longer and more accurate.

MONEY BACK GUARANTEE

This First Flight Steel Power Center Golf Ball is so superior in distance and accuracy that we want you to satisfy yourself on these advantages. We invite you to get three First Flight balls from your pro, play three rounds, and if you have not averaged straighter and longer drives, more accurate chips and putts, and a lower score, you may return the three balls to us for full refund.

—First Flight Company,
Jimmie Demaret, Vice President

FIRST FLIGHT COMPANY, Chattanooga 5, Tennessee

Midwestern Distributor, Fuhr's First Flight Dist. Co.,
8800 Menard Ave., Morton Grove, Ill.

Western Distributor, Don Martin and Co.,
1029 N. Alverado, Los Angeles 26, Calif.

Originators of First Flight Patented Steel Power Center Golf Balls and of First Flight and Jimmie Demaret custom made registered swinging weight golf clubs. These clubs are built to fit you to any specifications prescribed by your club Professional at no extra cost. Ask him for details.

FREE

engineering layout of a **PLASTIC PIPE SPRINKLING SYSTEM**

for **YOUR** course...

WHETHER OR NOT YOUR
IMMEDIATE PLANS CALL FOR

CresLINE

the #1 PLASTIC PIPE



We're willing to invest some high-priced engineering talent on your course right now with no cost or obligation to you because we believe that ultimately you'll pick the No. 1 Plastic Pipe — Cresline!

WE'LL DO THIS FOR YOU FREE!

1. Make a complete blueprint plastic pipe diagram layout for the sprinkling system of your choice for your course.
 2. Figure your costs on the pipe required.
 3. List supplemental equipment needed.
 4. Provide complete instructions for proper operation of the system.
- Each course layout is individually engineered and designed. This service is free and there are no obligations!

GOLF COURSE TECHNICAL PLANNING DEPT., G-0
CRESCENT PLASTICS, INC.
EVANSVILLE, INDIANA

- Please make engineering suggestions and figure costs on attached plan.
- Send more data on Cresline Pipe.

NAME.....

TITLE.....

ADDRESS.....

CITY.....STATE.....

SIMPLY SEND US THE FOLLOWING INFORMATION:

1. Plan of course drawn to scale including location and size of all the buildings.
2. Water supply. Location, source, volume of water.
3. Topographical map. Location of trees, greens and water supply. (If such a map is not available, show elevations on plan of course.)
4. Type of system required. Greens and tees only or complete system of greens, tees, and fairways.

MAIL THIS COUPON TODAY!

CRESCENT PLASTICS, Inc.

955 Diamond Ave.
Evansville, Ind.

PIONEER MEMBER OF



MEMBER OF NATIONAL GOLF FOUNDATION