

AMERICA'S FINEST GOLF PRACTICE NET

made with United States Rubber Company's shock absorbent ENSOLITE

—a tough expanded cellular plastic pad sewed to heavy duck and designed to withstand the terrific impact of high velocity drives. Prevents ball rebound.

- Easy to set up — INSIDE OR OUTSIDE • Back drop 8' wide 9' high • Ensolite pad 4' x 6' • Side nets 8' x 9'\$98.00 F.O.B. Factory
- 8' x 9' back drop and Ensolite Pad.

Please enclose check, money order or purchase order.

SOUTH BEND PRODUCTS SALES

1422½ Mishawaka Ave. South Bend, Indiana



Leading Country Clubs
Use South Bend Golf Practice Nets

Dawson Returns to Spalding

George Dawson has returned to A. G. Spalding & Bros., as dir. of public relations. He had



Dawson and Spalding pres., E. L. Parker

been with the firm from 1936 to 1957. After serving as Chicago dist. mgr. for several years, Dawson transferred to New York in 1951 as asst. to the pres. A year later he was made national sales mgr. and shortly after this vp and a member of the board of the parent company. In his new position, Dawson will act as liaison man between Spalding and golf pros.

Motor Appliance Develops New Relay Tester

A new TVR Relay Tester for automatic battery chargers has been developed by Motor Appliance Corp., 5737 W. Park ave., St. Louis, 10. Called the B-316, it is designed to simplify the adjusting of TVR relays. In Motor Appliance chargers, when the gassing point of a battery under charge is reached (at about 85 per cent of full charge), the TVR relay automatically reduces the charging current to about five per cent of the amp hour rating. The B-316 is designed to make the relay setting as simple as a clock setting.



PHILLIPS

CAM LOCK



The world's finest and best known.

Will not turn or break apart.

PRO'S CHOICE

F. C. PHILLIPS, INC.

STOUGHTON, MASS.

THE **NEW** MARCH OF DIMES



THE NATIONAL FOUNDATION

**BUY DIRECT FROM MANUFACTURER...
CUT MOWER BLADE COSTS**

50%



(MADE OF TOP QUALITY KNIFE STEEL SPECIALLY HARDENED FOR LONGER WEAR)

Jones Heavy Duty Stationary Blades Are *Guaranteed* For Long Life And Exceptional Service—And You Can Save 50% And More! Recommended By America's Leading Golf Courses For High Quality—Low Cost. Blades In Stock For Immediate Delivery.

SINCE
1916

Send us your specifications today. Write to:

JONES MOWER and EQUIPMENT CO.

2418 GRASSLYN AVENUE

HAVERTOWN, PA.



International Danuser all-purpose blade can be angled to left or right to furrow excess material to one side. All adjustments for angle, pitch, tilt and depth of cut are made by single-handle control from tractor seat.

**Larson Designs Broad-Caster
to Reduce Mechanical Failures**

A minimum of moving parts to reduce mechanical failure is claimed for the Broad-Caster, made by Larson Machine Co., Princeton, Ill. A specially designed feed opening slide connection eliminates the need for disconnecting control parts

when removing units. An exclusive "Jabitator" agitator maintains a constant flow without causing violent material churning. There are no chutes or tubes to clog. The new Broad-Caster has 15 cu. ft. displacement.

Shag Net Takes Full Shot

Shag Net, which is 6½ ft. wide and 6½ ft. high, will take full shots off any club. Top quality canvas is framed with 16 gauge steel tubing



and shock absorbing curtain hangs four ins. from the back panel. Shag Net is light in weight and easily disassembled. Profitable distributorships for professionals are available through Midwest Golf Supply, 300 Fleming Bldg., Des Moines, Ia.

NOW AN UNBREAKABLE TEE MARKER

DURABLE CAST STEEL

DIA. 8 in. • HGT. 3½ in. • WT. 5½ LBS.

PRICE \$3 each \$5.95 pair

F.O.B. MASSILLON, OHIO

Shipping charges prepaid for 18 prs. or more

"TIGER" TEE MARKERS are unconditionally guaranteed against breakage.

Write for details



**CHOICE
OF
COLORS**

BOYD & BLACK GOLF PRODS. CO., 700 23rd St.N.W., Massillon, Ohio

SAVE CLUB HOUSE FLOORS

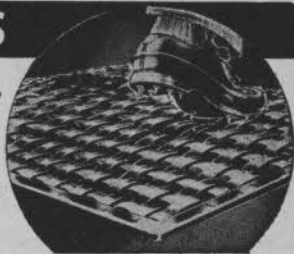
WITH SPIKE-RESISTANT PNEU-MAT RUNNERS

Protect your floors from spike holes with rugged Pneu-Mat Runners. Absolutely spike-resistant, they provide a comfortable walking surface—improve the appearance of your club house.

Woven of rubber-impregnated fabric, Pneu-Mat Runners are tougher than rubber runners. Reversible for double wear.

Money Back Trial Offer: Order a trial section. Test it on an area which gets especially hard wear. Money back if not satisfied.

DDD



STANDARD WIDTHS

20" - 24" - 30"
36" - 42" - 48"

Trial Section

24" x 60"
\$12.50 postpaid

Write today for illustrated folder

SUPERIOR RUBBER MFG. CO., INC. • 145 Woodland Ave., Westwood, N. J.

Asthalter Gets New MacGregor Marketing Position

Jack H. Asthalter has been appointed to the newly created position of vp, marketing by the MacGregor Co. Asthalter served with Wallace Silver-smiths and W. A. Sheaffer Pen Co. in a marketing and merchandising capacity. He is a graduate of the University of Iowa and went with Sheaffer after leaving school in 1936. He remained with this firm until 1952, working up to Eastern general mgr. At Wallace he was a vp. In his new position, Asthalter will coordinate activities of the pro golf and athletic equipment sales depts., merchandising, ad and marketing services.



and are being forced to subsist on shrubs and garden products. TAT-GO, sprayed on the plants, keeps the deer traveling.

Aero-Thatch, Inc., Lists Dealer Appointments

A basic dealer organization in key areas of the U.S. has been established by Aero-Thatch, Inc., according to Robert Wiley, general sales mgr. Each dealer is equipped and qualified to explain features of Aero-Thatch equipment and demonstrate the CHIA method of turf renovation and maintenance.

Dealers are: Cale's Lawn & Golf Supply Co., Jacksonville, Fla.; Crenshaw-McMichael Seed Co., Tampa; George A. Davis, Inc., Chicago; Fertl-Soil Co., Rahway, N.J.; Golf & Garden Equipment Co., Elm Grove, Wis.; Graubau's, Inc., Rockville Centre, L.I.; Lafkins Lawn & Golf Supply Co., White Plains, N.Y.; The Magovern Co., Inc., Springfield, Mass. with branches in Wetherfield and Stratford, Conn. and Pittsfield, Mass.; Kenney Machinery Corp., Indianapolis, Ind.; Sawtelle Bros., Denvers, Mass.; Sessions Lawnmower Sales & Service, San Diego, Calif.; Ed Short Co., Seattle; Toro & Turf Supply Co., Atlanta; and Turf & Garden Suppliers, Norfolk, Va. Aero-Thatch is represented throughout Canada by Duke Lawn Equipment, Ltd., Burlington, Ont.

Linck's TAT-GO OK'd by U.S.D.A.

TAT-GO, made by O. E. Linck Co., Inc., Clifton, N. J., has been approved for marketing by the U.S.D.A. It is an animal repellent that protects crops up to 10 mos. It specifically repels deer and rabbits. Linck points out that deer, for example, have been driven from their feeding grounds by the onrush of civilization



A Proven Golf Ball Washer for...

The HENRY GOLF BALL WASHER

Used On Leading Golf Courses Throughout The World

You get more ball washer for the money with The Henry. It costs less initially. Course Supts. will find it requires minimum upkeep. Golfers throughout the world have found that The Henry, with its rubber squeegee and gasket, cleans their balls faster and more efficiently.

DEALERS IN ALL PRINCIPAL CITIES

only
\$14.75

Prices F.O.B.
Waukesha, Wis.

A. C. Schendel,
Distributor
Rt. 5 Box 92,
Waukesha, Wis.



ROBERT BRUCE HARRIS

Golf Course Architect

MEMBER AMERICAN SOCIETY OF GOLF COURSE ARCHITECTS

664 N. MICHIGAN AVENUE CHICAGO 11 • ILL.
Whitehall 4-6530

K & M Dedicates Head Office and Research Center

Keasbey & Mattison Co., Ambler, Pa., dedicated its new office headquarters and research



center, both located in Ambler, last fall. The buildings were designed by G. M. Ewing Co., Philadelphia. The office building contains 20,000 sq. ft., is completely air conditioned and houses the executive, financial, purchasing and statistical depts. The research center is said to be one of the most modern in the industry. It has 11,000 sq. ft. devoted to asbestos, asphalt and heating insulating product research and development. Special rooms here are equipped to simulate various climatic and weather conditions and there are several labs for individual product research.

Manufacturer's Specialty Awards

Diamond rings given by Manufacturer's Specialty Co., Inc., 2736 Sidney st., St. Louis 4, in connection with the sales of Pro-Grip Non Slip and Pro-Grip Wax have been awarded to the following pros: Billy Wilson, Bob Jones GC, Atlanta; Bill Martin, Forest Hills, Cornelius,

R. A. DUMAS COMPANY, INC.

WAREHOUSE POINT, CONNECTICUT

Golf Course

IRRIGATION ENGINEERING

Design, Supervision and Consultants

Distributors of:

Johns-Manville Transite

Buckner Valves and Sprinklers

Ames Portable Aluminum Pipe

Midland, Myers & Marlow Pumps

Aqua-Dial Automatic Systems

NATIONAL 3-4471, 3-0368

Ore.; Martin Colombo, Pelham Split Rock, Bronx, N. Y.; Frank Stiedle, Sunset, Biloxi; Al Michael, Webb Memorial, Baton Rouge; Bob Fiori, Woodlawn, APO 12, N. Y.; L. D. Barnes, Cedar Hill, Victoria, B. C.; Pete Doll, Iroquois, Louisville; Tom Keane, Hanover (N. H.) CC; Chuck Smith, Jackson (Mich.) CC; Lafayette Franks, Glen Lakes, Dallas; A. E. Heidorn, Hillside (Ill.) GC; George Lake, Recreation Park GC, Long Beach, Calif.; Russ Baeli, Breathnach, Cuyahoga Falls, O.; Walt Phillips, Butler GC, Elizabeth, Pa.; Herb Thienell, Lake Worth (Fla.) GC; Ed Sochacki, Oahu CC, Honolulu; Ken Kuhn, Columbine CC, Littleton, Colo.

Skibbe Applicator Has Numerous Uses

The Skibbe Applicator, which has been manufactured by Skibbe Mfg. Co., Sodus, Mich., for 15 years, is built to broadcast seed, fertilizer, insecticides, herbicides and fungicides. Up to 3,000 lbs can be handled on the trailer and the applicator's hopper has actual capacity of 560



lbs. Bed and hopper are made of marine type plywood for corrosion- and weather-proof service. Adjustable, stainless steel feed spouts control spread pattern. Two different materials can be broadcast at the same time and spread can be adjusted to cover range of from 2 to 40 ft. Full details can be obtained from the manufacturer.

Fairway Brush Does Two-Way Cleaning Job

Fairway Brush & Mfg. Co., 38368 S. Beachview dr., Willoughby, O., markets a two-way

brush that it recommends for cleaning woods and irons. Called the Fairway Brush, it combines a durable Tynex Nylon brush with a plastic scraper which can be easily attached to a bag. Pros are invited to investigate the Fairway Brush card display plan on which they can realize a profit of more than 40 per cent.

New Gas Driven Utility Car for Superintendents

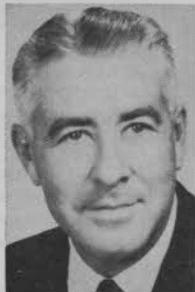
Terra-Car Corp., 2207 Big Bend Blvd., St. Louis 17, is marketing the Utilicar, a gas driven vehicle which has been designed for supts. Featuring the Goodyear Terra-Tire, the Utilicar



is said to be capable of being driven over ground too soft to walk on without doing damage. The tire (16 x 15 x 6 ins.) spreads weight over a large area and helps give the Utilicar exceptional traction. The car is powered by a 7 hp engine and travels 2 to 9 mph. It has rear wheel steering, weighs 800 lbs. and has hydraulic brakes with hillholder.

Etonic Names O'Brien Sales Manager

Appointment of Richard D. O'Brien as sales mgr. for Etonic golf shoes for men and women has been announced by Robert A. Eaton, vp, Charles A. Eaton Co., Brockton, Mass. O'Brien, formerly divisional sales mgr. for Dunlop Tire & Rubber Co., and sales mgr. for Bowling Machine, Inc., will head the Etonic sales force covering the U. S.



New PGA Line Launched

The new PGA line of golf equipment and wearing apparel was launched in October in Newark, O. Merchandise in the line was approved by the PGA emblem specification committee. Distribution is being made by National PGA Distributors, a wholly owned subsidiary of Comptometer Corp., Chicago. W. D. Schaffner is pres. of the Distributors organization which has a sales office at 38 S. Dearborn St., Chicago, in addition to the main office in Newark.

James G. Harrison

GOLF COURSE ARCHITECT

Member
American Society of Golf Course Architects

266 Harrison Road
Valley 3-3444

Turtle Creek, Pa.
Suburb of Pittsburgh

WILLIAM P. BELL & SON

GOLF COURSE ARCHITECTS

Member: American Society
of Golf Course Architects

544 Sierra Vista Avenue
Pasadena, California
Sycamore 3-6944 Atlantic 7-2933



DAVID GILL *Golf Course Architect*

country club, resort
and municipal courses
of distinction

ST. CHARLES, ILL. phone 5883

GOLFDOM'S
February Ad Forms
Close
January 23rd



BOB BALDOCK
GOLF COURSE Architect
 1505 Blackstone
 FRESNO, CALIFORNIA

ROBERT TRENT JONES

Member:
 American Society of Golf Course Architects

Golf Course Architect

20 Vesey Street

Tel: Beekman 3-1023
 NEW YORK, N. Y.

Cushman Improves '60 Electric Golfer

Improvements in the 1960 Cushman Electric Golfer include a new foam cushion seat, new

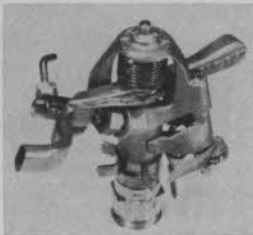


Cary Middlecoff endorses Cushman.

motor mount, new steering dampener for greater stability and enclosed foot control (speed) switch. These refinements plus the old, reliable features in Cushman cars have prompted Cary Middlecoff (in photo) to select the Electric Golfer for rental operations at Diplomat CC, Hollywood Beach, Fla. The car is said to give 36 or more holes per charge and a 22 amp charger is included with the car as standard equipment. A 30 amp charger is optional.

Precision Jet Sprinkler

RainBird PJ (Precision Jet), a new sprinkler head has been developed by National Rain Bird Sales & Engineering Co. The exclusive curved arm design accurately controls the water pattern and provides uniform coverage without puddling. The Precision Jet is available in three models: part circle (25PJ); full or part circle (25 PJ-FP); and part circle with the "Do-All" nozzle baffle for distance control (25 PJ-DA). Details can be obtained from Rainly Sprinkler Sales, 609 W. Lake, Peoria, Ill., or National RBS & E, PO Box 547, Azusa, Calif.



Victor Appoints Coons to Service Manager Post

Appointment of Clarence H. Coons to the position of service mgr. of Victor Electric-Car Rentals, Inc., has been recently made. He comes to the national golf-car rental firm from a similar position with Import Motors, Chicago. Coons has had training at four Air Force automotive maintenance service schools and three civilian schools. His new position with Electric-Car Rentals will

PENHURST DEVELOPMENT CO.

Incorporated

GOLF COURSE DESIGN
 AND CONSTRUCTION

35 Years Experience

JAMES G. HARRISON
 Architect

FRED GARBIN
 Agronomist

JOHN McANINCH
 Gen'l. Supt.

Box 31
 Valley 3-3444

Turtle Creek, Penna.
 FAirview 7-4704

RALPH PLUMMER

GOLF COURSE ARCHITECT

Member, American Society
 of Golf Course Architects

10330 Kilkenny • Dallas, Texas
 Davis 7-3136

ALFRED H. TULL

Golf Course Architect

35 White Street
New York 13, N. Y.

GOLF COURSE CONSTRUCTION

By CONTRACT

MADDOX CONSTRUCTION COMPANY

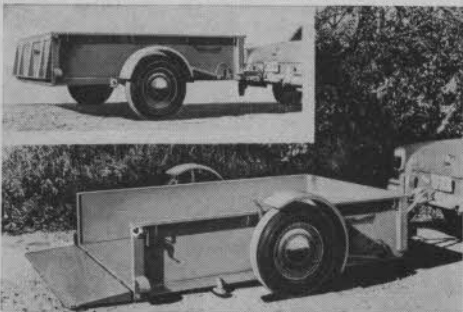
Phones: EXport 7-6600
Hickory 2-2411

Rankin, Illinois
Danville, Illinois

include supervision of maintenance for the nationwide Victor Electri cars operated on a fleet rental basis by the wholly-owned subsidiary of the Electri-Car Div. of Victor Adding Machine Co.

Magline Introduces Self-Lowering Trailer

Trailevator, a self lowering, self elevating hydraulic trailer for general utility hauling, has

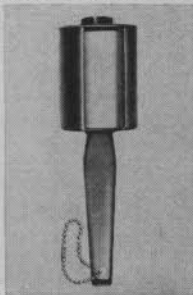


been introduced by Magline Inc., 1900 Mercer st., Pinconning, Mich. The new trailer permits one-man handling of bulky material or equipment since the bed can be lowered to the ground and then lifted and locked in hauling position. The tailgate can be used as a ramp.

Trailevator is available in $\frac{1}{2}$ or 1-ton models with rated load capacities of 1,000 and 2,000 lbs. Both units have hitch assemblies that make uncoupling unnecessary when the trailer is lowered or elevated.

Perma Lint Remover

A lint remover with 3-in. roll of special white hi-tac tape is being distributed by Gordon Diversified Dist. Co., 6915 Michigan ave., Detroit 10 (Dept. B-59-1.) Perma Lint Remover has a smooth rolling action with snap-on pry-off knob and serrated cutting edge. The latter two features make removal of old tape and replacement of new an easy job. The tape is about 12 ft. long. The Perma Lint Remover comes in six colors. Gordon has a fund raising program for organizations, details of which are available from the company.



Atlantic Products Sales Corp., Trenton 5, N. J., is now marketing a matching golf club bag combination set. It is made in Singapore Red, Taboe Blue and British Tan. Details can be obtained from the manufacturer.

Wm. F. Mitchell Golf Course Architect

NORTH SUTTON • N. H.
P. O. Box 7 Phone: 441

NEW YORK 36 • N. Y.
520 Fifth Av. Phone: Murray Hill 2-5844

POMPANO BEACH • FLA.
P. O. Box 2004 • Phone: WEbster 3-9343

William F. Gordon

and

David W. Gordon

Golf Course Architects

Doylestown, Pennsylvania

Fillmore 8-4243

Members American Society of Golf Course Architects

GOLF BAG TAGS

CLUB MEMBERSHIP TAGS
PUNCH BOARDS
"I-D" CLUB IDENTIFICATION
LABELS
GOLF PRO STATIONERY
CADDIE & WAITERS BADGES
GOLF CLUB DISPLAY FIXTURES
"CLUB CADDIE" CARRIERS
GOLF COURSE SIGNS

IRVIN E. SCHLOSS

MILLER GOLF PRINTING

2053 HARVARD AVE., DUNEDIN, FLA
SEND FOR CATALOGUE

GOLF RANGES
PAR THREE
MINIATURE COURSES



SEND FOR ILLUSTRATED CATALOG.
COMPLETE LINE OF GOLF EQUIPMENT AND
SUPPLIES.

EASTERN GOLF CO.

2537 BOSTON ROAD, BRONX 67, N. Y. Dept. G

Kilties Available with Etonic

Genuine white buck is set off with Cordstone saddle and top binding in the new Etonic Staff Model golf shoe. It has heel to toe cushion inner-sole and glove leather lining. Matching kilties are available. Etonic, made by Charles A. Eaton Co., Brockton, Mass., is available only in pro shops.



Pedersen Improves Clubs

Pedersen Sales Co., Wilton, Conn., says that an improved plate design gives better protection for the soles of its wood heads. The laminated woods are built to resist splitting and cracking. No extra charge is made by Pedersen for building woods as well as irons to specifications. Irons made by the company have thicker soles for correct weight distribution. Each club in a set of irons is said to be triple checked for loft, lie and identical feel.

BUYERS' SERVICE • P 103

WITTEK

for the best of the latest in

**RANGE - PAR 3
MINIATURE**

EQUIPMENT - SUPPLIES - FIXTURES

Write for complete catalog

Wittek Golf Range Supply Co., Inc.

5128 W. North Av., Chicago 39, Ill.

Trade BRIEFS

Kathy Cornelius, who won the Women's Open in 1956 and one of the leading players on the LPGA tour, has been added to the advisory staff of Kroydon Corp., Melrose Park, Ill. . . . Mark Cox, Golfcraft vp, has announced that Bob Brue, who turned pro last fall after shining as an amateur, has joined the staff of the Glasshaft manufacturing company H. Smith, former supt. of Manufacturers' GC, Oreland, Pa., is now with the Clapper Co., West Newton, Mass., as a sales rep. . . . Crouse-Hinds Co., Syracuse, N. Y., has released its latest bulletin on area floodlighting . . . Ask for Bulletin 2719 if you request this release . . . Scan, Shell Chemical Age News publication, reports that two California researchers are using a giant vacuum sweeper to collect nematodes, etc. from the soil . . . Floyd C. Snyder, chmn. of the board of Ace Rubber Products, Arkon, O., died in October. . . He headed Ace since its founding in 1935 and prior to that was pres. of the predecessor company, American Rubber & Tire.

Bristol Golf Sales, Inc., recently opened at 866 N. Garfield, Montebello, Calif., is exclusive distributor for all lines manufactured by Kroydon Corp., and Sportsman's Golf Corp. . . . A. G. Spalding & Bros. cooperated this fall with

GOLF PRACTICE NETS

Strongly recommended by Henry Cotton: well preserved strong twine and will stand very hard driving. Stout rope all round.
10 ft. X 10 ft. £4 12 ft. X 12 ft. £5
14 ft. X 14 ft. £6 carriage paid

SOUTH COAST NETMAKERS

34 Springfield Road - St. Leonards - Sussex
ENGLAND

Kill WATER WEEDS!

Water hazards and lakes now may be cleaned of all rooted aquatic weeds, Lily, cattail, milfoil and many other aquatic weeds are easily killed with one application of R-H GRANULAR WEED RHAP. It is easily applied — will not harm fish or animals. This inexpensive application usually lasts from 18 to 36 months. Write for further information or ask your dealer.

REASOR-HILL CORPORATION
BOX 366C, JACKSONVILLE, ARKANSAS

White House Correspondents Assn. in giving Pres. Eisenhower an exact duplicate of Bob Jones' "Calamity Jane" putter. . . The presentation was made by Jones himself. . . International Harvester has approved use of 4 kw 110/220 Power All Pac generator and portable 180 amp Power-Arc Welder, made by Gibbs-Leherissey Co., Chicago, with its Lo-Boy and Farmall Cub tractors. . . Another new Golcraft staff addition is Shirley Ruth Englehorn, who turned 18 in December and will play the LPGA tour this year.

Toro's top salesman of institutional power mowers was T. W. Dawson of Richmond (Va.) Power Equipment Co. . . Northrup, King & Co., Minneapolis, says this year's supply of Penn-cross bent won't be sufficient to meet demand and suggests that supts. get their orders in early. . . Norton Co., 1817 E. Indian School rd., Phoenix, moved into new quarters last fall which give the firm Arizona's largest display of lawn equipment and course supplies under one roof. . . Tolex golf bags, made by General Tire & Rubber Co's Pennsylvania Athletic Products div., have been completely restyled and the line, available in all price ranges, has been expanded.

Wyandotte (Mich.) Chemicals Corp., J. B. Ford div., has added the following reps: R. A. Helderman, L. B. McMullen and F. E.

RYANS O.K. No. 4 SEEDER & SPREADER 4 Cu. Ft.(300 lbs) Capacity-3 Ft. Spread



No Holes to Clog.
Quick Shut-off Lever &
Adjusting Gauge
Screw On Handle
Spreads Top Dressing,
Nitro-Humus, Peat,
Commercial Manure
& Other Materials
Successfully
Weights Only 69 Lbs.
Write Dept. "G"

DEALERS WRITE FOR OPEN TERRITORIES
H. & R. MFG. CO., Los Angeles 34, Calif.

Look at Wittek's record before you turn in your USED GOLF BALLS For Cash or in rebuilt balls

27 years of reliable grading, rebuilding, rebuilds personalized; and payment has satisfied 2,300 Range, Course, Par 3 and Miniature customers and made Wittek the Used Golf Ball clearing house.

Ask for details and shipping tags.

Wittek Golf Range Supply Co., Inc.

5128 W. North Av., Chicago 39, Ill.

Wilson in Atlanta; Robert Montgomery, Cincinnati; C. T. McIntosh, Jr., Dallas; Joseph Allred, Los Angeles; J. C. Anderson, New York; and J. J. Watson, Philadelphia. . . Roger E. Martin, formerly chief metallurgist, is now research dir. of Triangle Conduit & Cable Co., New Brunswick, N. J. . . Other recent Triangle promotions: Stephen Belansky and P. E. Johnson have been named dir. and asst. dir. of the industrial relations dept. . . John F. Bahr has been advanced to general traffic mgr., succeeding the late Henry Hahn.

Golcraft's promotion campaign for 1960 was started with a four-color folder on the Art Wall story. . . Keasbey & Mattison, Ambler, Pa., has appointed Louis Voges project engineer in the central engineering dept., and T. A. Dougherty, Jr. is now asst. to the vp, production. . . Another K & M promotion involves W. H. Mackey, who has been named merchandising mgr. of the asphalt products dept.

The Big Challenge

Jacobsen Manufacturing Co., Racine, Wis., has selected the theme, "The Big Challenge" for 1960. New models such as the Ram, the Mow Mobile 34, Pow-R-Edger and Turf King 76 are expected to increase the sales range. In Jacobsen ad literature "The Big Challenge" is emblazoned on likeness of a Viking warrior.

1914 **FULNAME** 1960

Original Ball Marker

The rolling die does it!

3 TYPE SIZES

Small — Medium — Large

Box 178

Cincinnati 6, Ohio



**TRANSPORT
YOUR
GOLF CARS
VIA
TRANS-AMERICAN
VAN SERVICE**

We Are Authorized Carriers Rendering Service Anywhere in the United States Modern Moving Vans Manned by Skilled Operators Assure Utmost Protection — No Crating Needed — We Transport from Factory to Golf Clubs or Between Clubs

Phone Collect: HEMlock 4-1000
TRANS-AMERICAN VAN SERVICE, Inc.
7540 S. Western Ave. Chicago 20, Ill.

LOCKER NAMEPLATES

Directory and Handicap Boards



Write for sample and prices

KIRSCH CARD SERVICE

BOX 426X, ELMHURST, ILL.

EDWARD LAWRENCE

PACKARD

GOLF COURSE ARCHITECT
Fleetwood 2-2113

11 South La Grange Road La Grange, Illinois

GEOFFREY S. CORNISH

GOLF COURSE ARCHITECT

Fiddler's Green South Amherst, Mass.

Phone: Alpine 3-3913

ARTHUR JACK SNYDER

Golf Course Architect

Graduate Landscape Architect

DESIGN — CONSTRUCTION — REMODELING

1009 E. Heatherbrae P.O. Box 493
SCOTTSDALE, ARIZONA PINETOP, ARIZ.

CHARLES E. STEWART

GOLF COURSE
IRRIGATION ENGINEER

Reports • Design • Supervision
18357 Homewood Ave., Homewood, Ill.
Phone: SY 8-3918

TEE MATS... Locker Room Mats

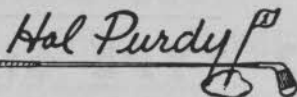
The finest mats in the market

Well made from selected strips of heavy duty tires and bound with high tempered, heavy galvanized, spring steel wire for outstanding performance and longevity. Made to order. Low priced. Shipped prepaid. Write Harry B. White, Merchants Tire Mat Division, 2710 Washington, St. Louis.

O. JONES & SON

Golf Course Design - Supervision
Construction - Remodeling

CHAMPIONSHIP OR PAR 3 COURSES
P. O. BOX 6484 WINSTON-SALEM
WEST PALM BEACH, FLA. NORTH CAROLINA
PHONE OV 3-0726 PHONE PA 2-2141



GOLF COURSES

DESIGN • SUPERVISION • CONSTRUCTION
Uptown Box 215, Kingston, N. Y.
Phone FEderal 1-8162

CERTIFIED HYBRID BERMUDAS

TIFTON 328 (TIFGREEN) — TIFTON 57

Send for descriptive booklet also reprint from U.S.G.A. Journal titled "Changing Greens from Common Bermuda to TIFGREEN".

GOLF & LAWN GRASS NURSERIES

3539 Kingsboro Rd. N.E. Atlanta 19, Ga.

**WILLIAM B. LANGFORD
GOLF COURSE ARCHITECT**

Balanced Topographical Design

Member:
American Society of Golf Course Architects
Telephone: AUSTIN 7-3371
621 N. Central Ave., Chicago 44, Ill.

LAkeview 8-6302 — 8-7213

Harry M. Rainville

GOLF COURSE ARCHITECT
LAND PLANNING

6092 Orchard Drive Yorba Linda, Calif.