



**"CUSHMAN,  
ELECTRIC Golfers  
out in front on every count"**

*reports Bennie Boggess,*

*veteran pro with 22 years of service  
at Indian Hills Country Club, Kansas  
City, Mo., (shown at the right of the  
picture with Jack Stadler, Cartmaster)*

Here's what Mr. Boggess reports about Indian Hills' fleet of 27 Cushman Electric Golfers: "They're out in front for pleasure because of their comfortable ride, safe, easy operation and dependable performance. They're out in front for economy because of their low operating cost and minimum maintenance requirements. It all adds up to a bigger net return to the club."

Ask your dealer for a demonstration or write for information—Lease plans available



**CUSHMAN MOTORS**

982 No. 21st, Lincoln, Nebraska

A subsidiary of Outboard Marine Corporation,  
maker of Johnson and Evinrude outboard motors

lifting this winter . . . It's located in High Point, N. C. . . . Nine holes are being rebuilt.

Informal poll of San Bernardino, Calif. residents recently showed that a golf course is the city's biggest need . . . Erie, Pa. makes budget allowance for purchase of site for its third municipal course . . . Portland corp., headed by R.W. Fullerton and John Beaver, Jr., buys Forest Hills GC, near Cornelius, Ore. . . . Lake City (S.C.) CC 9-hole course to be completed in spring . . . Mayor O'Connor of Springfield, Mass., promises golfers that Memorial GC won't be sold by city until new South Branch course is built.

Bob Poff, pro at Omaha CC, moving into a new shop . . . Illinois Seniors GA has 275 members . . . Harry J. Dumbaugh is pres.; A. L. (Jim) Miller, D. L. Harrington, and H. D. Fargo, Jr., are vps; and Fred A. Cuscaden is secy-treas. . . . Golf courses with only 9 holes no longer eligible for membership in the Metropolitan GA . . . This was decided at a fall meeting . . . Ten 9-hole clubs that were in the assn. before Aug. 17, 1959, however, will continue as members . . . MGA has 196 clubs in its organization.

Southern Turf Conference will be held Feb. 22-23 at Claridge Hotel in Memphis . . . Jerry Priddy, Eldorado CC, Palm Desert, Calif., who played major league baseball for 13 years, is taking a fling at the PGA tour this year . . . Vallejo (Calif.) city council votes to enlarge local Chabot course to full 18 holes at cost of \$60,000 . . . Laguna Niguel Corp. plans to build 6,000 homes in Laguna Beach, Calif., area with course and other recreation facilities included.

**PHILLIPS**

**CAM LOCK**



The world's finest and best known.

Will not turn or break apart.

**PRO'S CHOICE**

**F. C. PHILLIPS, INC.**

**STOUGHTON, MASS.**

Now available to the Turf Trade. The *Skibbe* Applicator



*"The Spreader With The Controllable Spread"*

Patented exclusive control of direction and width of spread. Used and approved by a national agency, leading universities and the horticultural trade for over 15 years. Features corrosion proof bearings, hopper and a demountable spreader; leaves a sturdy trailer for year around use. Write for additional information. No obligation.

**Skibbe Manufacturing Co., Sodus, Michigan.**

Phoenix (Ariz.) City Council makes deal with John F. Long to build 18-hole course in suburban Maryvale . . . Jones to build and operate the course which will become city's property in 20 years . . . Don Johnson, formerly asst. to Babe Doucette at Bellevue CC (Boston dist.), now pro at Meadow Brook CC (Boston dist.)

If there were a Most Valuable Pro award it should go to Emil Beck, pro at the Black River CC, Port Huron, Mich., for his work in getting the PGA Business School for Assistants established and operating . . . Three pros, who have assistants who attended the school at Clearwater last year, told me the schooling was worth between \$3000 and \$4500 additional revenue in their depts. due to the assistants handling their jobs in such fine shape.

R. Albert Anderson, Longboat Key, Fla., and Racine, Wis., is architect of Starke (Fla.) C&CC 18, first 9 of which is nearing completion . . . Charles Carr is Starke supt. . . Anderson remodelling Capital City CC 18 at Tallahassee, Fla. . . He also is revising Keystone Heights (Fla.) CC design.

Jules Platte, pro at Knollwood Club, Lake Forest, Ill., has sold his interest in Scottsdale (Ariz.) CC and resigned as the club's winter pro . . . Jerry Carle now is Scottsdale pro . . . Platte may join Carl Allison, pro at San Marcos CC, Chandler, Ariz., to teach during remainder of winter . . . A. J. (Tony) Anthony, formerly with PGA Tournament Bureau staff now pro at Waialae CC, Hawaii.

Donald McKay, Sr., Hartford (Conn.) GC supt., quoted by Hartford Courant golf writer Owen Griffith, declared 1959 was the worst year in 25 on golf courses in Connecticut, Rhode Island and Massachusetts . . . Open Palm River CC 18 on northeast edge of Naples, Fla. . . Course is feature of real estate development of Lauri Peroli, operator of Pine Ridge CC, Cleveland, O. . . Tony Deleela is pro and Paul Nevers is supt. . . Ben Zinke was designer and builder . . . Construction on Cypress Lake CC 18 at Fort Myers, Fla., viewed by members and prospective members at big barbecue party . . . Dick Wilson is architect and Bob Simons is supt. of construction . . . Expect to have course in play in Nov.

Sam Drake from Richmond (Ind.) CC to pro job at Point O' Woods CC, St. Joseph, Mich. . . Bill MacDonald from South Haven (Mich.) CC to pro post at Hastings (Mich.) CC . . . Tom Ice, pro at Klinger Lake CC, Sturgis, Mich., is a student in marketing at Ferris Institute when he isn't on the Klinger Lake summer pro job.

Big community-wide testimonial dinner at San Jose, Calif., honoring Eddie Duino, the PGA "Golf Professional of the Year" . . . Manny Goulart, pro-mgr., Hillview Public Golf Course, San Jose, headed pro golfers committee putting on the party for Duino.

Art Elmers leaves Glen Ridge (N. J.) CC to become supt., Preakness Hills (N. J.) CC . . . Ray Hansen, a graduate of U. of Pennsylvania  
(Continued on page 98)



### 15" or 26" PAR AIDE SAND RAKE

Rakes are constructed of strong aluminum alloy that will not rust or rot.

WRITE  
FOR CATALOG

**PAR AIDE PRODUCTS COMPANY**  
DEPT. G, 1457 MARSHALL AVENUE, ST. PAUL 4, MINNESOTA

### Dayton Gets Land for Courses Without Cash Outlay

Ben Garlikov, sports editor of the Dayton (O.) Daily News, recently pointed out in an article in that paper that Dayton has three municipal golf courses, soon will have four, and none has cost the city a penny for land acquisition. One, the Community Club, was an outright gift from John H. Patterson, founder of National Cash Register Co. Madden Park and Miami View came into being as afterthought following the city's purchase of land for the purpose of erecting a sewage treatment plant. Now what is known as Well Field is to be converted into three courses, one of 6,300 yds., another 7,000 yds. and the third, a Par 3. Well Field, in the north section of the city, is not completely used for the purpose for which originally intended, and so golf is getting the nod. The reason: Golf is such a fast growing sport and it pays for itself.

Pres. of Iowa GCSA for 1960 is Ralph Zegerac, Waterloo. Hank Hennings, Rock Island, Ill., is vp and Dick Rahe, Des Moines, secy-treas.

### MacDonald Is Golfcraft Rep

Paul R. MacDonald, Montclair, N. J., has been named sales and promotional rep for Golfcraft, Inc. For the past five years he has been an executive assistant with the USGA in New York. MacDonald will represent Golfcraft in New York state and make his headquarters in Syracuse.



### Distribution of Malinckrodt Chart Heralds Coming of Spring

Spring can't be far away. Malinckrodt Chemical Works, St. Paul 7, Mo., is now distributing its "Fungicide Application Chart" that is a great aid to the supt. in keeping ahead of the brown-patch, red thread, curvalaria, etc. Malinckrodt suggests hanging the new chart over the 1959 record so that the supt. can quickly tell by comparison how he is faring in the battle against disease. Advantages of the chart, according to the manufacturer: It helps determine dosages; its timetable pinpoints periods of greatest disease activity; record keeping is easier when it is used.

## TIFTON BERMUDAS

Tifton 328 (Tifgreen) — Tifton 57 (Tiflawn) — Ormond  
Planting stock you can rely on

## SOUTHERN TURF NURSERIES

Box 569

Tifton, Georgia

Tel. 616

*The South's Producer of Tifton Bermudas*  
E. Ray Jensen, Turf Agronomist

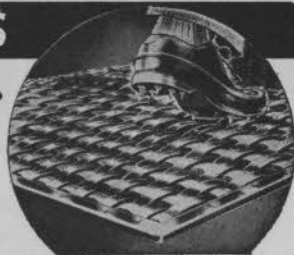
# SAVE CLUB HOUSE FLOORS

## WITH SPIKE-RESISTANT PNEU-MAT RUNNERS

Protect your floors from spike holes with rugged Pneu-Mat Runners. Absolutely spike-resistant, they provide a comfortable walking surface — improve the appearance of your club house.

Woven of rubber-impregnated fabric, Pneu-Mat Runners are tougher than rubber runners. Reversible for double wear.

**Money Back Trial Offer:** Order a trial section. Test it on an area which gets especially hard wear. Money back if not satisfied.



### STANDARD WIDTHS

20" - 24" - 30"  
36" - 42" - 48"

### Trial Section

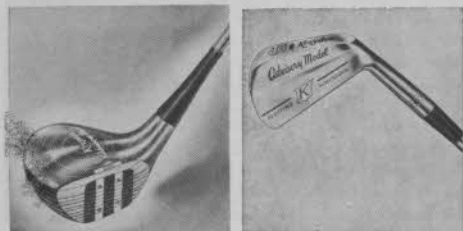
24" x 60"  
\$12.50 postpaid

Write today for illustrated folder

**SUPERIOR RUBBER MFG. CO., INC.** • 145 Woodland Ave., Westwood, N. J.

### Kroydon Advisory Models

Advisory Model woods and irons by Kroydon have been named for the professionals on the company's staff. Woods have lustrous lami-



nated heads with Duroton finish, contro-sealed inserts and newly designed sole plates. Prime calfskin grips are in brown and the shafts are made by True Temper. The irons are a deep fanned blade design with powered flange for maximum impact. They are finished in triple plated chrome and have diamond shaped vertical scoring. Wood and iron sets are said to be carefully matched.

Jon Gustin has been added to the MacGregor advisory staff. A pro for nine years, Gustin only started playing the tour in 1959. He plays out of the Philadelphia CC. His best showing came in the Mobile Open last year when he finished fourth.

### Joyce Eaglette for Women

The Eaglette golf shoe for women, made by Joyce of California, is of zebra leather with black calf accent. Lightweight, comfortable, the Eaglette has a kilie tongue attached. Another comfort feature is said to be the Wm. Joyce exclusive, flat-soled wedge styling that reduces the tendency for the shoe to curl up at the toe line.



The Eaglette is available in pro shops.

### Booklet Describes Use of Ford Maintenance Equipment

Recently published is a Ford Motor Co. booklet detailing the role that Ford equipment can play in a grounds maintenance program. Photos in the 4-color, 8-page edition show how Ford tractors and other machines can be used for mowing, mulching, cleaning operations, snow removal and landscaping. Copies are available from Industrial Sales dept., Tractor & Implement div., Ford Motor Co., 2500 E. Maple, Birmingham, Mich.

## BUY DIRECT FROM MANUFACTURER... CUT MOWER BLADE COSTS



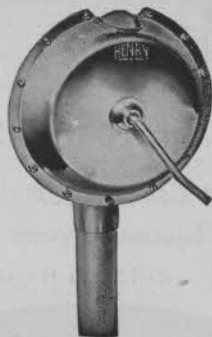
(MADE OF TOP QUALITY KNIFE STEEL SPECIALLY HARDENED FOR LONGER WEAR)

# 50%

Jones Heavy Duty Stationary Blades Are Guaranteed For Long Life And Exceptional Service—And You Can Save 50% And More! Recommended By America's Leading Golf Courses For High Quality—Low Cost. Blades In Stock For Immediate Delivery.

SINCE 1916

Send us your specifications today. Write to:  
**JONES MOWER and EQUIPMENT CO.**  
2418 GRASSLYN AVENUE HAVERTOWN, PA.



## A Proven Golf Ball Washer for...

### The **HENRY GOLF BALL WASHER** Used On Leading Golf Courses Throughout The World

You get more ball washer for the money with The Henry. It costs less initially. Course Supts. will find it requires minimum upkeep. Golfers throughout the world have found that The Henry, with its rubber squeegee and gasket, cleans their balls faster and more efficiently.

DEALERS IN ALL PRINCIPAL CITIES

only  
**\$14.75**

Prices F.O.B.  
Waukesha, Wis.

**A. C. Schendel,**  
Distributor  
Rt. 5 Box 92,  
Waukesha, Wis.

### Color-Coordinated Golfwear

One of the models at the cocktail party and fashion show held at the 43rd meeting of the PGA at the Ft. Harrison Hotel, Clearwater, is shown wearing a smart "color-coordinated" golfing outfit. The knitted sports shirt for women is the Munsingwear "Tee-Timer" in resort white. It is worn with beautifully tailored gray flannel slacks. The wedge soled golf shoes are the "Lady Scot" by Wm. Joyce of California. The fashion show was sponsored by Wm. Joyce golf shoes, Munsingwear knitted golf shirts and E-Z Go golf carts.



### Schaffner is Comptometer VP

William D. Schaffner, pres. of National PGA Distributors, a subsidiary of Comptometer Corp., Chicago, has been elected vp of the parent company. Schaffner was pres. of Burke Golf Equipment Corp. from 1954 until 1959 when Burke was absorbed by Comptometer.

### Dunlop Going All Out to Promote Super Maxfli

Dunlop Tire & Rubber Corp. is promoting its new Super Maxfli as a ball that gives top distance, extreme accuracy and stays white longer. Its accuracy, according to the company, comes from an "Energy-Bank" center, a specially constructed thin wall core of extremely dense liquid. The Super Maxfli's whiteness (Dunlop's "big news" of the year) is said to be the result of a blend of high cost Brazilian balata with an extremely tough outer coating. The coating is chemically, and not just physically, bonded to the ball. Dunlop is so sold on the ball that for 1960 it has budgeted its largest promotional expenditure yet in advertising it.

### Frutabs Counteract Exhaustion

Developed after 27 months of research by Pfanstiehl Laboratories, Inc., 104 Lakeview ave., Waukegan, Ill., is pure fructose (known also as fruit sugar) for boosting energy. The fructose is made into tablets, marketed under the name of Frutabs, and, the manufacturer states, helps maintain a normal blood sugar level for a prolonged period. This counteracts mental and physical exhaustion.

BUYERS' SERVICE • P 95

The World's finest, fastest and safest sprayer and liquid fertilizer applicator.

## B-SPEE-D

Available now at just **\$3495**



DEALER  
INQUIRIES  
INVITED

### FOR FINER GREEN MAINTENANCE

- 1—Will apply all liquid insecticides & fungicides.
- 2—Will apply all liquid fertilizers and all wettable and granular powders.
- 3—Will wash all grass cuttings, leaves, etc. from greens. Time required 5 to 10 minutes for each green.

Write to—**B-SPEE-D MFG. CO.**  
P.O. Box 4634, Portland 2, Ore.

## **R. A. DUMAS** COMPANY, INC.

WAREHOUSE POINT, CONNECTICUT

**Golf Course**

**IRRIGATION ENGINEERING**

Design, Supervision and Consultants

Distributors of:

Johns-Manville Transite

Buckner Valves and Sprinklers

Ames Portable Aluminum Pipe

Midland, Myers & Marlow Pumps

Aqua-Dial Automatic Systems

NATIONAL 3-4471, 3-0368



## ROBERT BRUCE HARRIS

*Golf Course Architect*

MEMBER AMERICAN SOCIETY OF GOLF COURSE ARCHITECTS

664 N. MICHIGAN AVENUE - CHICAGO 11 • ILL.

WHitehall 4-6530

### **National Rain Bird Introduces New 181 Pop-Up Sprinkler**

National Rain Bird Sales & Engineering Corp's new spray-type 181 Series Pop-Up sprinkler has the normal 1-1/16-in. travel for turf areas. Of rust-proof, all-brass construction, it has a 3/8-in. threaded inlet for coupling sprinkler and nipple or riser. It is available in full, quarter, half and third-circle models and comes in regular and oversize nozzle sizes to meet variations in capacity and flow. For complete information, write Rainy Sprinkler Sales, 609 W. Lake St., Peoria, Ill., or NRBE, PO Box 547, Azusa, Calif.



pared to 97 cents in fiscal 1958. Sales in 1959 were \$46,123,353 and \$42,435,161 the previous year. Pres. Edwin L. Parker said that transportation, labor and material costs continued to increase last year but manufacturing and operating changes were made that offset part of the increased costs. Spalding's inventory at the end of the year was up about \$2,500,000, but was considered to be in good balance.

### **Widmayer Retires; Barr Named VP by Keasbey & Mattison**

D. W. Widmayer, vp, marketing consultant and member of the board of Keasbey & Mattison Co., Ambler, Pa., retired in Dec. after 42 years with the firm. He had been a dir. since 1948 and a vp for nine years. At the same time, K & M announced that Norman L. Barr has been elected vp, sales, and a member of the board. Barr has been with the Ambler company since 1948 and a year ago was named general sales mgr. of the firm.

### **Spalding Net Up 38 Cents A Share in 1959**

A. G. Spalding & Bros., Inc. and subsidiaries had consolidated net earnings of \$1,116,710 for the year ending Oct. 31, 1959. This was an increase of about \$315,000 over the previous year. Per share earnings for 1959 were \$1.35 com-

### **Crescent Plastics Gets Ad Award**

Crescent Plastics, Inc., Evansville, Ind., won a 1959 Advertising Awards contest conducted by the Affiliated Advertising Agencies Network for its trade magazine ad campaign featuring Crescent Plastic pipe. More than 700 entries were submitted in the competition.

## **RALPH PLUMMER**

**GOLF COURSE ARCHITECT**

Member, American Society  
of Golf Course Architects

10330 Kilkenny • Dallas, Texas  
Davis 7-3136

## **DAVID W. KENT & CO. GOLF COURSE ARCHITECTS**

**Designers, Site Engineers, Builders,  
Maintenance Supervisors  
for over 40 years.**

Consultant Services Available to Established  
Golf Courses.

8535 Melvin Ave.  
NORTH RIDGE, CALIF.

Dickens 4-6020

Dickens 5-2788

# James G. Harrison

## GOLF COURSE ARCHITECT

Member  
American Society of Golf Course Architects

266 Harrison Road Turtle Creek, Pa.  
Valley 3-3444 Suburb of Pittsburgh

### Three USR Promotions

U.S. Rubber Co's footwear and general products div., which handles golf ball sales, has appointed three new dist. sales mgrs. They are: Kenneth M. Kaligian, Boston; Robert D. Hampton, Houston; and Selden D. Kelley, Cleveland. Kaligian has been asst. dist. sales mgr. in Boston; Hampton held a similar post in Seattle; and until his promotion, Kelley was asst. dist. sales mgr. in Cincinnati. USR also has recently appointed Robin H. Slate dist. sales mgr. of its Seattle branch.

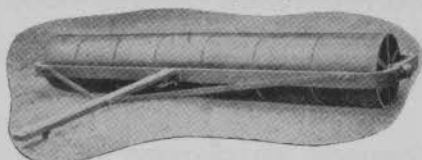
### West Point Cites Advantages of Aeri-Punch

The West Point Aeri-Punch, an attachment for the JR Model Aerifier, has these advantages according to West Point (Pa.) Products Corp., manufacturer of the machine: A minimum of moving parts; each set of tines fires independently of the others; soil cores are collected in the Aeri-Punch pan and thus there is no need to clean up after the green is worked over.

### Davis Handles IHC Tractors

George A. Davis, Inc., 5440 Northwest Highway, Chicago 30, recently contracted to become a dealer for the International Harvester Co. Davis handles a complete turf line including seed, fertilizers, mowers, sprinklers, fungicides and tractors.

## Le Roy Cast Smooth Drum Heavy Duty ROLLERS



The choice of many Country Clubs, Parks, Estates and Airports for proper turf compaction. Single and tandem models in many rolling widths.

LE ROY MFG. COMPANY., Dept. GLM  
Doylstown, Penna. U.S.A.

## COMPLETE GOLF COURSE CONSTRUCTION

- Turf Agronomist—R. L. Elder
- Design & Const. by contract E. B. Ault
- Design and Engineering: COMPLETE AGRONOMIC AND CONSTRUCTION SPECIFICATIONS

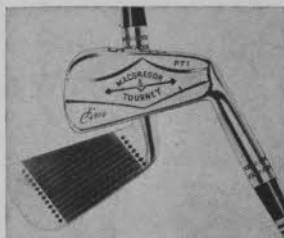
Design and Construction  
for Renovation of Existing  
Golf Courses

Thomas E. Carroll and Son, Inc.

15710 Colesville Rd., Silver Spring, Md. • EV. 4-1515

### Claim Three Advanced Features for Tourney Irons

In its 1960 Tourney irons, MacGregor claims to offer three of the most advanced features in club design and construction. Flame ceramic facing is said to give a permanent "touch" on every shot; recessed weight on back of the clubhead raises the focal point to concentrate power; Pro-Pel Action shaft (in four flexes) has the flex lowered for greater power at impact. Other features include a raised toe to give clubs a large look, diamond shape vertical scoring to aid in centering the ball and the exclusive, new "Firma Grip."



### Golfcraft Press Booklet

Golfcraft, Inc.'s "1960 Golf Information" for press, radio and TV came off the press in mid-January. It contains complete biographical information on 18 men and four women staff members and also has a section listing winners and their scores of past USGA Men and Women's Opens, the Masters, PGA Championship, Western Open, etc.

## GOLF BAG TAGS

- CLUB MEMBERSHIP TAGS
- PUNCH BOARDS
- "I-D" CLUB IDENTIFICATION LABELS
- GOLF PRO STATIONERY
- CADDIE & WAITERS BADGES
- GOLF CLUB DISPLAY FIXTURES
- "CLUB CADDIE" CARRIERS
- GOLF COURSE SIGNS

IRVIN E. SCHLOSS

## MILLER GOLF PRINTING

2053 HARVARD AVE., DUNEDIN, FLA  
SEND FOR CATALOGUE

**BOB BALDOCK**  
GOLF COURSE  
*Architect*

FRESNO, CALIFORNIA  
1505 Blackstone

*David Gill*  
GOLF COURSE  
ARCHITECT

National Bank Building St. Charles, Illinois  
Phone JUno 4-2883

### Swift's Rid Said to Prevent, Not Kill Crabgrass

Swift & Co.'s Agricultural Chemical div., Chicago, is marketing "Rid", which the company says is unique because it is a non-poisonous crabgrass preventer rather than a killer. The key ingredient is a new complex organic material, Dacihal. It is recommended that Rid be applied in March and April so that it causes the crab seedling to die soon after germination. The product comes in a 25 lb. bag that covers 2,500 sq. ft. In 1960 Rid will be marketed in 23 metropolitan areas from Boston to Denver.



### Bean Introduces New Mist Model for Mosquito Control

A new model 51 Rotomist has been introduced by John Bean div., Food Machinery & Chemical Corp., Lansing 4, Mich. It is said to be a self-contained air-type mist sprayer for mosquito control. The 51 has a 21-in. axial flow fan and Hypro pump producing 15 gpm at 150 psi. On a 75-gal. Bean-bonded tank, the 51 is manually rotated through 360 degs. and has a 35

deg. angle discharge head. All controls are within easy reach of the operator. Model 51 can be conveniently and safely mounted on a pick-up truck. Complete information can be obtained from the John Bean div.

### Link-Mobile Powered by One Cylinder Gas Engine

Link-Mobile golf car, manufactured by Northwestern Motor Co., Eau Claire, Wis., is powered by a one cylinder, air cooled kohler engine and



has a gas tank capacity of 2 gals. Four rounds per tankful are said to be about average. Link-Mobile has tiller type steering, front end spring suspension and integral type starter. It travels

## ROBERT TRENT JONES

Member:  
American Society of Golf Course Architects

*Golf Course  
Architect*

20 Vesey Street  
Tel: Beckman 3-1023  
NEW YORK, N. Y.

## WILLIAM P. BELL & SON

GOLF COURSE ARCHITECTS

Member: American Society  
of Golf Course Architects

544 Sierra Vista Avenue  
Pasadena, California

Sycamore 3-6944

ATLantic 7-2933



# Wm. F. Mitchell

## Golf Course Architect

NORTH SUTTON • N. H.  
P. O. Box 7 Phone: 441

NEW YORK 36 • N. Y.  
520 Fifth Av. Phone: Murray Hill 2-5844

POMPANO BEACH • FLA.  
P. O. Box 2004 • Phone: WEBster 3-9343

# William F. Gordon

and

## David W. Gordon

Golf Course Architects

Doylestown, Pennsylvania

Fillmore 8-4243

Members American Society of Golf Course Architects

from 8 to 10 mph and has rear wheel, mechanical brakes. The three tires are 6.00 x 6 Turf-tender and wheel base is 54-ins. The car has two-rider, two-bag capacity. The foam rubber cushion seats are in white plastic with marine plywood backing.

### K & M Introduces Plastic Pipe to Go Along with Asbestos-Cement

To simplify procurement for customers who have need of both asbestos-cement and plastic pipe, Kearsbey & Mattison Co., Ambler, Pa., has introduced four types of plastic pipe — ABS, Normal Impact PVC, Polyethylene and High-Impact Styrene Alloy Sewer pipe. The asbestos-cement and plastic pipe combination are available at all K & M factories in a "one-stop shopping" deal. The new plastic has permanently smooth bore, comes in 10 and 20-ft. lengths and has high strength in spite of light weight. It can be cut cleanly with a handsaw and is easily joined by a solvent weld.

### Masslinn Towels Recommended for Economy, Handling Ease

Masslinn golf towels, made by Chicopee Mills, Inc., Non-Woven Fabric div., 47 Worth st., New York 13, are said to be especially convenient for clubs since they do away with sorting, counting, etc. Made of cotton and rayon textile fibers

in a mesh style, the towels are 14 x 24 ins. and are furnished quarter-folded. Stock-imprinted or club crest-imprinted towels can be supplied and come in pastel as well as white. Metal dispensers are wall or tray type. Masslinn also is available for washrooms, coming in a 12 x 17-in. size.

### Drott Prepares Soil for Greens

Soil conditioner at new 9-hole course of Wayne Recreation Assn., near Lyons, N. Y., is fed by International Drott TD-9 Four-in-One.



The machine prepares 25 cubic yards of top soil, sand and peat moss an hour for greens. The International Drott unit, owned by the Wadsworth Co., Downers Grove, Ill., constructed tees and greens on the 3,200-yard-long course. An estimated 45,000 cu. yds. of material was removed in general grading work. Water is supplied by a four-acre lake, seven feet deep, which also serves as a hazard.

## GOLF COURSE CONSTRUCTION

By CONTRACT

### MADDOX CONSTRUCTION COMPANY

Phones: EXport 7-6600  
Hickory 2-2411

Rankin, Illinois  
Danville, Illinois

## ALFRED H. TULL

Golf Course Architect

35 White Street  
New York 13, N. Y.

**ATTENTION GOLF COURSES &  
GOLF CART LEASE OPERATORS!**

**MUST SELL AT ONCE!**

**65—1959 Cushman Elec. GOLF CARTS**  
*Used only a few months. Like new!*

**WRITE — WIRE — PHONE**

**CUSHMAN PRODUCTS CO.**

*A Division of Mages*

4660 W. WASHINGTON BLVD.

ESTebrook 9-4200

Chicago, Illinois

**JOSEPH S. FINGER**

**GOLF COURSE ARCHITECT-CONSULTING ENGINEER**

Design • Construction • Watering Systems  
Remodeling

408 N. Ave.A      Bellaire, Texas

Phone: Houston — MO 4-0039

*Registered Professional Engineer*  
*State of Texas 5708*

### **Deere Perfects Master Control for Crawler Tractors**

John Deere has perfected a master single stick control that activates hydraulics to clutch, brake,



steer and shift forward and reverse in operation of its "440" Industrial Crawlers. Called the "Pilot Touch", it is offered as optional equipment. Only slight pressure is required on the stick. It is operated with one hand, freeing the other hand of the operator for control of loaders

or other equipment used with the crawler. The result is a reduction in driver fatigue and increased production.

### **Ryan Landscaping Buys Soilaire Industries**

Ryan Landscaping Equipment Co., St. Paul, Minn., a div. of K & N Machine Works, Inc., has purchased Soilaire Industries of Minneapolis. For many years Soilaire has produced aerators, power rollers, lawn renovators and other turf equipment. A 10,000 sq. ft. addition to Ryan's plant was completed in Nov. to handle the new production.

In addition to its own Greensaire, Ryan manufactures a complete line of aerators for large scale and home turf areas.

### **Kit Describes Fate-Root-Heath Sharpening Equipment**

More than a doz. pieces of literature are in the kit covering lawnmower sharpening and servicing equipment manufactured by Fate-Root-Heath Co., Plymouth, O. F-R-H's complete line includes "hook" and "straight line" sharpeners, lapping-in machines, bed knife grinders, rotary blade grinders and mower repair parts. The firm has been manufacturing sharpeners since 1902. Complete information can be obtained from F-R-H.

## **Kill WATER WEEDS!**

Water hazards and lakes now may be cleaned of all rooted aquatic weeds, Lily, cattail, milfoil and many other aquatic weeds are easily killed with one application of R-H GRANULAR WEED RHAP. It is easily applied — will not harm fish or animals. This inexpensive application usually lasts from 18 to 36 months. Write for further information or ask your dealer.

**REASOR-HILL CORPORATION**  
BOX 36GC, JACKSONVILLE, ARKANSAS

**NEW Monroe FOLD-KING**



NO. K-3 TABLE  
TEMPERED MASONITE  
PLASTICIZED TOP

*Monroe*  
**Fold-King**

**DIRECT PRICES  
DISCOUNTS & TERMS**

**FOLDING TABLE LINE**

Kitchen committees, social groups, attention! Factory prices & discounts up to 40% to Churches, Schools, Clubs, etc. Monroe all-new FOLD-KING Banquet Tables, with exclusive new automatic folding and locking, super strength, easy seating. 68 models and sizes.

**BIG NEW 1960 CATALOG FREE**

Color pictures. Full line tables, chairs, table and chair trucks, platform-risers, portable partitions, bulletin boards. Our 52nd year.  
**THE MONROE CO., 12 Church St., Colfax, Iowa**