

MEMO

"We Saved as much as
90% on labor and 35%
on materials by using
EVANITE ABS TYPE II PIPE
for our
SPRINKLER SYSTEM"



... Edward A. Tanti, President, Wee Bonnie Country Club, Columbus, Ohio

"We are in a good position to know comparative costs, since last winter we installed another 18-hole golf course sprinkler system under the same conditions using a different material.

"To begin with, our pipe cost per foot for Evanite was only 65% of the cost of the other material... an initial **saving of 35%**

in material.

"The most impressive saving, however, was in labor. With Evanite, a crew of 4 men installed better than a mile of pipe per week. On the other job, a mile of completed system required a crew of 11 men **over 3 weeks**. Our total labor bill with Evanite ran 10% of that on the other project—a **90% saving.**"



Only ONE Irrigation Pipe Gives You All These Benefits!

- Tested, proved, high-tensile ABS Type II Pipe.
- Guaranteed against rot, rust, rodent damage, electrolytic corrosion.
- Can be air tested before backfilling.
- Complete line of fittings IN STOCK.

EVANITE PERFORATED PIPE Ideal for drainage and for leeching systems. Provides efficient drainage, yet carries off a minimum of dirt in suspension.

Evanite is the nation's only producer of large diameter plastic sewer main.

Evanite PLASTIC COMPANY

DIVISION OF THE EVANS PIPE COMPANY

Main Office: Uhrichsville, Ohio
Plant: Carrollton, Ohio

Sales Representatives:

Cleveland, Ohio - Bay City, Mich. - Columbus, Ohio - Fairmont, W. Va. - Pittsburgh, Pa. - Toledo, Ohio - Detroit, Mich. - Philadelphia, Pa.

One of the nation's largest producers of face brick, clay pipe, clay flue lining, wall coping, and related construction materials, with over 50 years of faster, friendlier service.

MAIL THIS COUPON TODAY

Evanite Plastic Co.
Carrollton, Ohio

Please tell me more about Evanite Irrigation Pipe.

NAME _____

POSITION _____

CLUB _____

ADDRESS _____

CITY _____

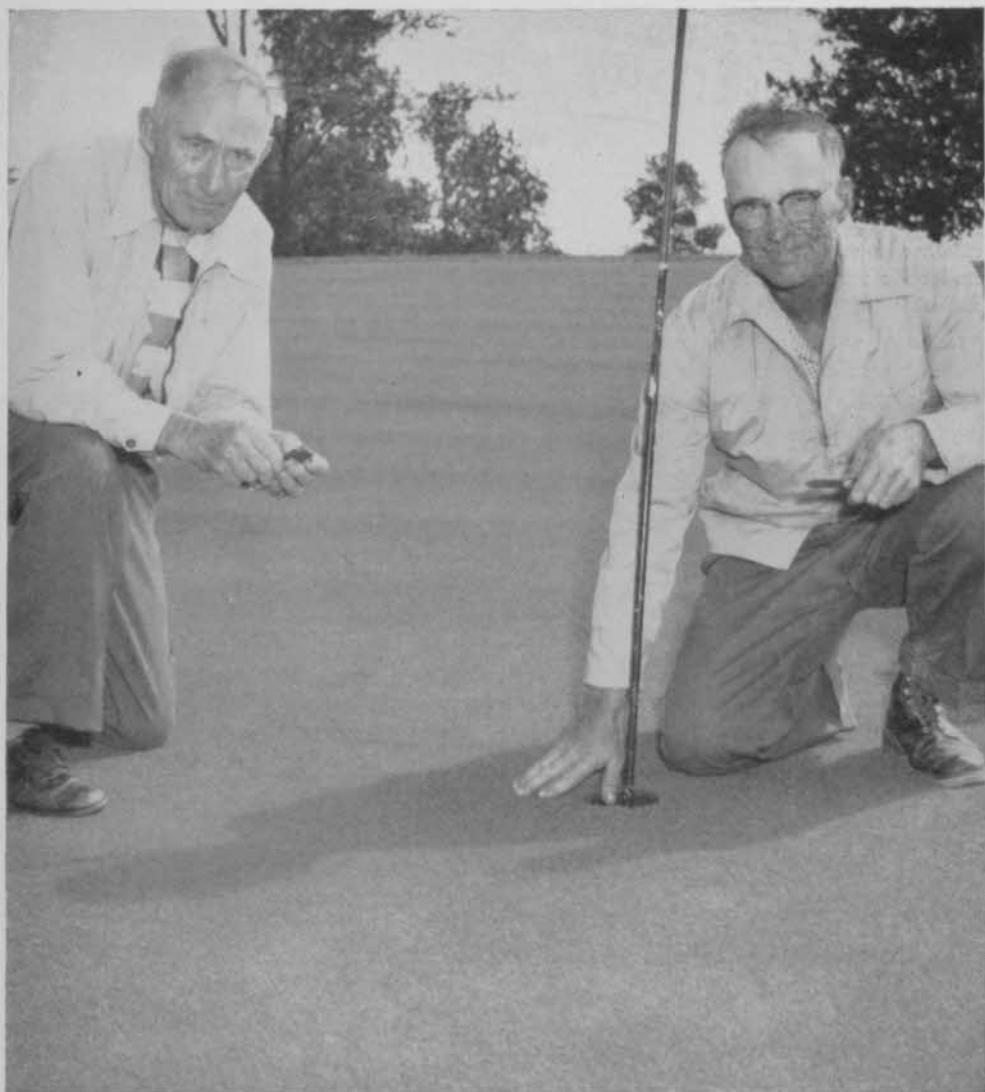
STATE _____

DO IT RIGHT WITH EVANITE SEWER, GAS, WATER, IRRIGATION PIPE

EVA-260-74

Father and son superintendent team tell how they—

Keep turf healthier all season by fertilizing with



• Mark and Orrin Prindle, on the 17th green of the Ridgeway Country Club, show the excellent turf resulting from the use of "Uramite". Mark Prindle, superintendent of the club since it was built in 1927, has now retired and turned over his duties to son Orrin. Both consider "Uramite" a necessity for growing top-quality turf.

and more vigorous long-feeding Du Pont URAMITE®

FERTILIZER COMPOUND

"In the fall of 1955, we tried Du Pont 'Uramite' on two problem greens and got excellent results the following year. We then tried 'Uramite' on 9 greens in comparison to our regular nitrogen program on the other 9 holes. The results were so gratifying that we now use 'Uramite' on all our greens.

"The clean and odorless characteristics of 'Uramite', plus the labor saving from the once-a-year application, have helped greatly in maintaining a good playing course. We will continue to use 'Uramite' as the basis of our nitrogen fertilization program."

Orrin Prindle,
*Superintendent
Ridgeway Country Club
Neenah, Wisconsin*

Turf management programs with Du Pont "Uramite" are producing outstanding results on courses all over the country, under all climatic conditions. The reason is simple. "Uramite" keeps soil nitrogen always at a proper level . . . feeds it gradually as turf needs it. "Uramite" is easy to handle, too—always clean, free-flowing and completely odorless. For courses that stay in top condition at all times, fertilize with leach-resistant Du Pont "Uramite". See your dealer for a supply today!

E. I. du Pont de Nemours & Co. (Inc.)
Industrial and Biochemicals Department
Wilmington 98, Delaware

Atlanta 8, Georgia 739 W. Peachtree St.
Houston 25, Texas 1100 E. Holcombe Blvd.
Minneapolis 2, Minn. 1207 Foshay Tower
Palo Alto, Calif. 701 Welch Road
Western Springs, Ill. 40 47 Street
Wynnewood, Penna. 308 E. Lancaster Ave.

In Canada:
Du Pont of Canada Limited. P.O. Box 660
Montreal, P. Q., Canada



BETTER THINGS FOR BETTER LIVING
. . . THROUGH CHEMISTRY

URAMITE®

FERTILIZER COMPOUND

NEW "WRAP-AROUND" NAME ON YOUR RANGE BALLS

Another Worthington First!



Now you can have the name of your golf range "wrapped around" each ball in big, bold letters—up to 14 letters and spaces on each "side" of the ball. Provides instant identification, cuts down on pilferage.

Dyed-in color bands can also be added, if you like.

The balls are the finest available—range-tested for five years. *Guaranteed* never to go out of round—or explode under scorching summer sun.

Choose from three types: Paintless White, Paintless Yellow or Luster-White Painted. Call your local Worthington Representative now for full details—or write Worthington Golf Inc., Elyria, Ohio.

Worthington

*Premiere name in
golf ball developments since 1904*

Swinging Around Golf

(Continued from page 28)

anything or felt that he hasn't learned anything, he can hit the trail for home and concentrate on being a good club pro." . . . If he hasn't "learned anything" in three years he will have a tough time getting any sort of a job at a good club to "resign himself" to.

Diplomat Hotel & CC, Hollywood, Fla., to build a third 9 . . . Bob Jones is writing his golfing biography . . . Former Wilmington (Del.) CC facilities, presented to city, will be called Green Hill Golf Course . . . Lot of Boston dist. pros conducted clinic and provided consulting service at Boston Herald-Traveler Travel and Sport Show.

Georgia GCSA organized and holds first meeting at Ft. Benning course, Columbus . . . Pres. is Harry Wright, Peachtree, Atlanta . . . Vp is Mel Warneke, East Lake, Atlanta . . . Secy. is Jimmy Lambert, Evans Implement Co. . . . Kings River GC, Visalia, Calif., to expand from 9 to 18 . . . Bright high school sophomore, Lester Finklestein, jr., makes plaster of Paris scale model of Orangeburg (S.C.) CC 18 now being built . . . Model was exhibited at high school Science Fair.

Weakley County CC being planned by Weakley County Chamber of Commerce, Martin, Tenn. . . . Cliff Weldon heads Martin div. of the C of C . . . Bob Rosburg really doing effective membership promotion campaign for new Brookridge CC at Overland Park, Kans. . . . Leon Andrews will be resident pro at Brookridge club which will have 45 holes . . . Andrews is a young businessman pro with a lot of savvy and personality . . . Dillon (S. C.) CC enlarging 9 hole course to 18.

Eastern Hills CC, Garland, Tex., 18-hole course to be formally opened in Sept. . . . Northmoor CC 18 at Broomfield Heights near Longmont, Colo., to be started in May . . . Press Maxwell is architect . . . Veterans' Hospital at Knoxville, Ia., to have 9-hole course this year . . . Clarke and Rausch, Los Angeles, to have golf course in 2,000 acre development at Holt Ranch, Carmel Valley, Calif.

Lake Whitney CC, near Whitney, Tex., organized to build golf and lake resort for business firm executives . . . Col. Henry R. Dutton, veteran club and hotel executive, is interested in the project . . . Montgomery County, Md., county council earmarks \$210,000 of a bond issue for public

*New
Cooper*

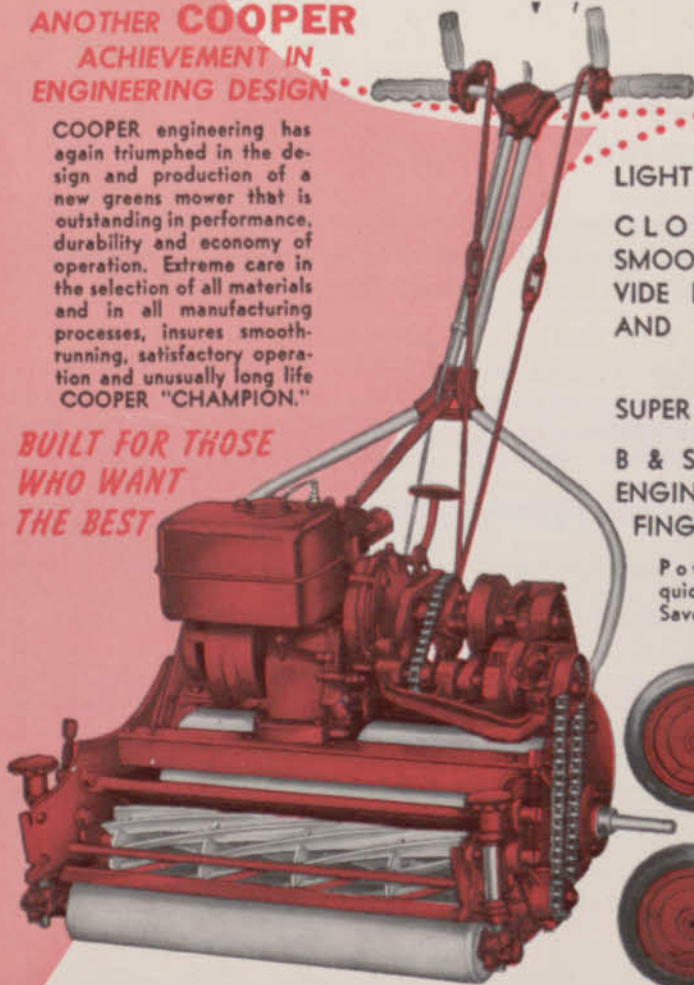
**Champion
GREENS MOWER**

FULL 21" CUT

**ANOTHER COOPER
ACHIEVEMENT IN
ENGINEERING DESIGN**

COOPER engineering has again triumphed in the design and production of a new greens mower that is outstanding in performance, durability and economy of operation. Extreme care in the selection of all materials and in all manufacturing processes, insures smooth-running, satisfactory operation and unusually long life COOPER "CHAMPION."

**BUILT FOR THOSE
WHO WANT
THE BEST**



LIGHT WEIGHT

CLOSE-COUPLED
SMOOTH ROLLERS - PRO-
VIDE PERFECT BALANCE
AND FREEDOM FROM
SCALPING

SUPER SMOOTH CUT

B & S 3.00 HP 4-CYCLE
ENGINE - RECOIL STARTER
FINGER-TIP CONTROLS

Power driven quick-on -
quick-off transport wheels -
Saves valuable time from
green to green.



Write for
literature and
detailed
specifications

COOPER MANUFACTURING CO.

409-411 South First Ave.
Marshalltown, Iowa., U.S.A.

FREE

engineering layout of a **PLASTIC PIPE SPRINKLING SYSTEM**

for **YOUR** course...

WHETHER OR NOT YOUR
IMMEDIATE PLANS CALL FOR

CresLINE
the #1 PLASTIC PIPE



We're willing to invest some high-priced engineering talent on your course right now with *no cost or obligation to you* because we believe that ultimately you'll pick the No. 1 Plastic Pipe — Cresline!

WE'LL DO THIS FOR YOU FREE!

1. Make a complete blueprint plastic pipe diagram layout for the sprinkling system of your choice for your course.
2. Figure your costs on the pipe required.
3. List supplemental equipment needed.
4. Provide complete instructions for proper operation of the system.
Each course layout is individually engineered and designed. This service is free and there are no obligations!

GOLF COURSE TECHNICAL PLANNING DEPT., G-0
CRESCENT PLASTICS, INC.
EVANSVILLE, INDIANA

- Please make engineering suggestions and figure costs on attached plan.
 Send more data on Cresline Pipe.

NAME.....

TITLE.....

ADDRESS.....

CITY.....STATE.....

SIMPLY SEND US THE FOLLOWING INFORMATION:

1. Plan of course drawn to scale including location and size of all the buildings.
2. Water supply. Location, source, volume of water.
3. Topographical map. Location of trees, greens and water supply. (If such a map is not available, show elevations on plan of course.)
4. Type of system required. Greens and tees only or complete system of greens, tees, and fairways.

MAIL THIS COUPON TODAY!

CRESCENT PLASTICS, Inc.

955 Diamond Ave.
Evansville, Ind.

PIONEER MEMBER OF



MEMBER OF NATIONAL GOLF FOUNDATION

FOR POWER WHERE POWER IS NEEDED



TRACTION POWER-FULL

190 AMP. HRS.

THE ONLY GOLF CAR BATTERY
WITH THE UNCONDITIONAL GUARANTEE *

Get the most from your golf car by using the best of batteries. The super-powered TRACTION POWER-FULL gives you 25 extra Ampere Hours - a power plus that makes for more dependable service, longer operating life and higher income.

Now in use at leading eastern golf courses, the TRACTION POWER-FULL battery is the answer to golf car power problems. It's a potent income producer for golf clubs and professionals.



* Full Value Replacement For One Year (The only unconditional one year in-use guarantee ever made by a battery manufacturer)

LIST PRICE... \$39.95

Special price to Pros and Clubs \$24.95
(F.O.B. Oceanside, N.Y.)

TRACTION SERVICE COMPANY • 118 Concord Avenue, Oceanside, N.Y.

course . . . Summer opening scheduled for James C. Cloniger's Spring Lake GC near York, S. C.

Elliott Roosevelt heads group planning All Seasons Club which intends to build course designed by Lawrence Hughes . . . Site of club will be on White River, 22 miles east of Meeker, Colo. . . Club to be for corporation executives and their families . . . Intend to have 500 corporation memberships at \$10,000 per membership, \$90 per month dues, on 7,000 acre, \$5 million club . . . Pike Brook CC, Ralph E. Westervelt, pres., to build 18-hole course at Belle Meade, N. J. . . Riverside, Tex., Robstown CC, enlarging course from 9 to 18 . . . Rock Springs (Wyo.) Golf Assn., headed by Howard Baggett, planning course . . . Clarendon County C of C planning course at Manning, S. C.

Wm. Entwistle now pro-mgr., Ogdensburg (N. Y.) CC . . . Arnold Becker & Associates, Phoenix, to build 2,000 acre retirement community to be called At Ease, near Sedona, Ariz. . . Jack Snyder, Scottsdale, designing the course . . . Vincent P. Lazdowsky, pro at Marshfield (Mass.) CC, Melvin G. O'Kelly, club's supt., and several club members to build

Par 3 by the Sea 18-hole course near Marshfield airport.

Plan enlargement of Switzerland of Ohio CC at Beallsville from 9 to 18 . . . Andre Roos new pro at Riverside CC, Coyote, Calif., succeeding Willie Goggin who moved to French Lick, Ind. . . Harrison Reed now mgr. of El Macero CC, being built between Sacramento and Dixon, Calif. . . D. O. Kirkland appointed by Ft. Worth recreation director, Harry Taylor, to supervise maintenance of city's four public courses . . . James Fox succeeds Kirkland as supt. at the Z. Boaz course.

Volk-McLain Co., Los Angeles real estate firm, plans 4,300 acre development near Contra Costa, Calif., including golf course, naturally . . . San Leandro, Calif., Recreation and Parks Commission negotiating for construction of course to be built and operated by private interests . . . Hunter Air Force Base, Savannah, Ga., to build 9-hole course.

Wm. Kyle, formerly mgr., Onandago G&CC, Syracuse, N. Y., now mgr., Yahundasis CC, New Hartford, N. Y. . . Edward Vincenzi heads group planning to build course between Rome and Utica . . . Bill Casper, Jr., National Open champion, one of 14 directors of Bonita Valley CC,

For LONG-TERM CONTROL



Check your
Dolge supply list

Weed killers
Insecticides
Mole and gopher killers
Golf ball cleaners

Rid Turf of Insects

SOLEXTO

For turf use—Kills Japanese beetles, chinchbugs and other insects. Dilute in up to 400 parts of water.

Eradicate Weeds on Parking Lots, Roads

S.S. WEED KILLER

Soil Sterilant—Speedy killer of all types of weeds. Keeps parking lots, drives, walks, gutters clear. Spray or sprinkle. Dilute in up to 40 parts of water.

Free Turf of Dandelions, Plantain

E.W.T. (2,4-D) WEED KILLER

Selective—Attacks weeds only. Rids turf of undesirable growth without injuring good grass. Non-poisonous. One gallon to 3 acres. Dilute in up to 400 parts of water and spray.

Exterminate moles and gophers

NOMOLE

Chemically treated grain. Exterminates moles, gophers, prairie dogs, field mice and other pests. Place in holes or nesting areas.

Clean Golf Balls Thoroughly

DOLCO PINE CLEANER

Safe in any machine; has pine aroma; efficient and agreeable.

For literature on above products write to
The C. B. Dolge Company, Westport, Conn.

dependable
DOLGE
TRADE MARK



Dick Metz (r), 1960 PGA Senior champion, receives winner's trophy from Ronald Teacher, managing dir. of Wm. Teacher & Sons, Ltd., Glasgow, Scotland, co-sponsor of the annual Dunedin (Fla.) Senior event. Dick got a \$1,500 check for winning the tournament and will have expenses paid to go to Scotland this summer to meet British Senior champion.

near Chula Vista, Calif. . . . Harry Rainville, Yorda Linda, is architect of the 18-hole course . . . Robert L. Watson who succeeded Johnny Inglis at Fairview CC, Elmsford, N. Y., where Inglis had been pro for 52 years, majored in psychology at the University of Texas . . . And so did Johnny at Fairview.

Aubry H. Hill, 82, Springfield, Mo., veteran golf enthusiast who helped Horton Smith make his first winter tour (1927-28), died recently . . . Hill shot a 69 at Hickory Hills CC, Springfield, when he was in his mid-60s . . . He and Horton backed Leonard Dodson and Ernest (Dutch) Harrison when they started on the tour . . . Horton's staff at Detroit CC this year will include Eldon Briggs, Steve Rybicki, Stanley Koziatek, Tommy Miller and Eddie Duino, jr.

Little Rock (Ark.) Air Force Base to be host this Sept. to Second Annual Air Force tournament . . . Course is only two years old and in fine condition . . . Its 18 greens are 328 . . . Charles (Rusty) Williams is pro-supt. and Dan Griffin is pro.

Dave Eckberg, formerly at Greenville (Mich.) CC now pro-mgr., Kendallville (Ind.) CC . . . Walter Bourne now pro at Moorland CC, Waukesha, Wis. . . . Darryl Acker now pro-mgr.-supt. Stevens Point (Wis.) CC . . . Gary Carle now pro at Scottsdale (Ariz.) CC . . . Jim Gantz goes

BEAUTIFUL
is the
word...



for NEWPORT C-1 BLUEGRASS

Turf quality never before possible now is a reality with the introduction of NEWPORT C-1 Kentucky bluegrass. You will immediately recognize NEWPORT C-1 because of its intense blue-green color . . . deeper than any bluegrass you have ever seen . . . thicker, more durable . . . better able to withstand hard use!

Here's why NEWPORT C-1 gives you a
BETTER lawn . . . with **LESS CARE!**

DROUGHT RESISTANCE—Developed where moisture is limited, NEWPORT C-1 can take a heavy beating from sun and drought.

DISEASE RESISTANCE—NEWPORT C-1 does NOT BROWN OUT like most other grasses . . . disease resistance is greater, particularly from beauty-marring rust.

LESS FERTILIZER—NEWPORT C-1 needs only MODERATE fertilizer application . . . thereby cutting fertilizer cost.



DEEPER ROOT SYSTEM—NEWPORT C-1 has an abundant, deep-feeding root system . . . the largest root system of any of the bluegrasses.

FOR THE LAWN OF YOUR LIFE . . . NEWPORT C-1 . . . THE BLUEGRASS SUPREME!

NEWPORT
BLUE GRASS
ASSOCIATION

P. O. Box 56 McMinnville, Oregon

How to build greens

Condition soil with Wyandotte TURFACE
before you seed. It's this easy:



1 Pour TURFACE in uniform piles over green area. This procedure makes for ease of spreading.



2 Work into soil with spike-tooth pulverizer. TURFACE will not break down, or blow away. It is heavier than vermiculite.



3 Roto-till to four-inch depth. (Note how granular structure of TURFACE permits uniform mix.)



4 Back-smooth to level surface. Green is now ready for seeding . . . conditioned with TURFACE to produce a sturdy, resilient turf that will stand up under hard use and dry weather with less watering, less work.