



- UscoFlow is cut to length with a simple tool such as a saw.



- Close-up of the finished riser and sprinkler head assembly. Note plastic elbows and fittings.

**by Adams, Inc., Tenafly, N. J.,
on Hackensack Golf Club.*



- Two lengths of pipe are solvent-welded to coupling. Weld becomes as strong and permanent as the pipe itself. Clamp-type fittings that leak, pull off and impair free flow are never needed.



Mechanical Goods Division

United States Rubber

WORLD'S LARGEST MANUFACTURER OF INDUSTRIAL RUBBER PRODUCTS

Rockefeller Center, New York 20, N.Y.

In Canada: Dominion Rubber Company, Ltd.

Bacteria and Nitrogen

(Continued from page 60)

nitrogen as compared with ammonium sulfate.

For all practical purposes the nitrogen is transformed to the readily leachable nitrate form very quickly. However, the same thing occurs so far as readily available nitrogen is concerned from the organic nitrogen samples.

Subsequent release is very slow but the thing that is significant with all of these tests is the total amount of nitrogen that is released. Of course, part of this is tied up in the organic reserve.

With urea forms it is possible, by varying the ratio of urea to formaldehyde, to come up with a material which does provide for a nitrification curve much better than anything else. The work carried on has shown that the qualities of these materials can be equivalent to what one would obtain from the better organics and also from repeated applications of the solubles. But the tests are expensive and the fact remains that the nitrification pattern still reestablishes nitrogen in nitrate form which is subject to loss.

I suspect that you would find a loss of nitrogen that doesn't get into the crop a

rather substantial and significant one.

One other thing that I must say here is that the use of organics has value other than as a source of nitrogen. Thus, I am not minimizing the value of any organic materials.

Weak on Women's Displays

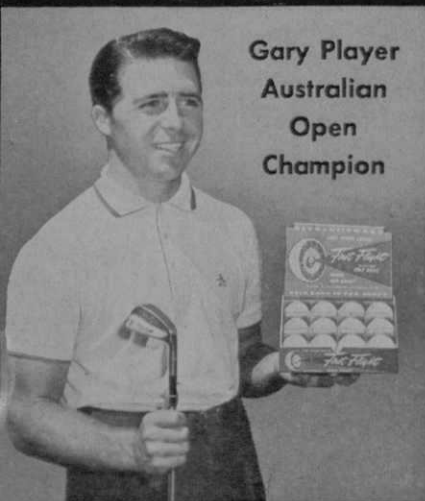
"Professionals who think they are good businessmen would be surprised if they realized their women members don't know how eager pros are to sell women's clubs." This observation was made by a Pacific Coast pro line salesman.

The situation isn't restricted to the Pacific Coast, according to reports Golfdom has received from salesmen who sell to pros in other districts.

Says a salesman who calls on pros in the New York metropolitan district: "Very seldom does a pro shop display emphasize that certain clubs are made especially for women. The pro thinks that the box containing clubs with a women's brand name will do all the advertising necessary. The job needs a lot more pushing than this. The pro should have some attractive sign calling attention to his special department of women's clubs."

More Champions SWITCH TO

First Flight



Gary Player
Australian
Open
Champion

More and more champions switch to First Flight! Champions like Gary Player, who trimmed seven strokes off the previous record to win the Australian Open. Gary Player started using the First Flight ball because he heard tournament players talking about the outstanding advantages the Steel Power Center golf ball offered all golfers. When he played it in one tournament he told Bo Wininger that he would never be satisfied to play the old type ball again.

Gary Player is one of the growing list of First Flight players like Jimmy Demaret, Bo Wininger, J. C. Goosie and others who know that the First Flight Steel Power Center golf ball helps them on every shot!

STEEL POWER CENTER GOLF BALLS
FIRST FLIGHT CO. • CHATTANOOGA 5, TENNESSEE

**More Accurate
on
Every Shot!**

Swinging Around Golf

(Continued from page 24)

takes jump toward reality as Bill Bell completes plans for Black Canyon CC course . . . Reported that Billy Fellows and Morey Amsterdam, TV and night club entertainers, to build course at Atkinson, N. H.

Seattle Park Board's six-year plan calls for a \$400,000 course in Bothell area . . . Crestwood CC to build 18-hole course near Providence, R. I. . . . City of Palm Springs, Calif., arranges to buy Palm Springs GC for \$800,000 . . . Palmetto CC, feature of big real estate development in South Miami, Fla., announced by Henry Russell, prominent amateur and realtor of Miami . . . Dick Wilson is designing the course . . . Henderson (N. C.) CC clubhouse destroyed by fire . . . Insurance was \$60,000 against which there is a note for \$34,600 . . . Estimates of loss vary from \$120,000 to \$140,000.

Manuel Francis, jr., out of Army in April, will become supt. at Belmont CC succeeding Ed Murphy who has been Belmont's supt. for 30 years and "made the course a showplace" according to the

Boston district's golfers and golf writers . . . Grand Haven, Mich., city officials talking about putting proposition for muni golf course before voters in 1960.

Gastonia (N. C.) Gazette printed a number of very interesting and informative features on opening of Gastonia CC course, including special stories on pro-supt., Furman Hayes and course foreman, Abel Lineberger . . . New course was designed by Ellis Maples . . . Arlington (Ore.) GC expected to be completed and opened this month.

Passing of Arthur E. Reid, 76, at Farmington, Conn., where he was pro at CC of Farmington for 20 years, starting in the early '20s, is another reminder of the urgency of getting history of American golf, as made and told by the old pros, into book form . . . Arthur Reid was an important part of American golf history . . . His two sons, Kenneth and Graham, are pros and carry on fine tradition of American pro golf that their father helped build . . . Arthur's more noted brother, Wilfred, still active in golf, also has played a leading role in the building of U. S. golf.

The PGA, with a wonderful chance to put into the annals of sports the unique

STEEL POWER CENTER

MASTER'S
CHAMPION
3
TIMES



"GREATEST BALL
I EVER PLAYED"

The extra weight, concentrated in the center, gives longer, truer flight . . . greater accuracy on chips and putts.

Jimmy Demaret

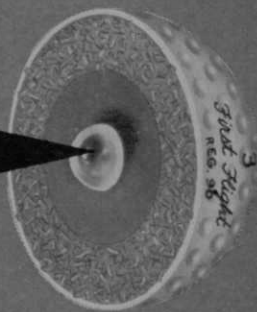
LOADED
WITH POWER

First Flight

SOLD ONLY
IN PRO SHOPS

INCREASES DISTANCE!

PATENT PEND.

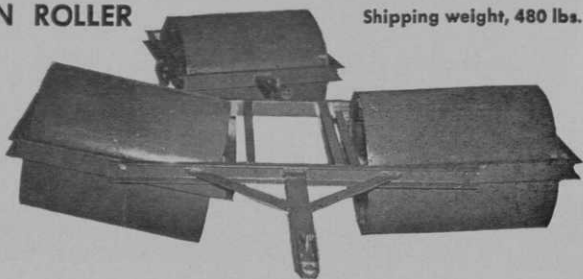


REDUCES HOOKS AND SLICES!
FIRST FLIGHT CO. • CHATTANOOGA 5, TENNESSEE

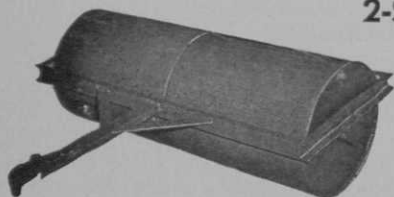
3-SECTION ROLLER

Shipping weight, 480 lbs.

An 80 inch roller with full oscillation for all sections. Water ballast 12-gauge welded steel rollers with rounded edges. Sand and dirt resistant alemite equipped hardwood bearings. Filled weight 600 lbs. per section. Frame of heavy welded steel construction complete with ball type hitch and mud scrapers. Painted rust resistant dark green.



2-SECTION ROLLER



A compact easily stored five foot water ballast roller of simple rugged construction. Welded and tested 12 gauge steel rolls with rounded edges.

Grease fitting equipped, replaceable hardwood bearings. Welded steel frame complete with ball type hitch and mud scrapers. Filled weight 1200 lbs. Painted rust resistant green. Shipping weight 325 lbs.

Also, we have five-section rollers

For fast, clean-plug aerifying — **THE NIGHT CRAWLER** — now available —
plugging $\frac{1}{2}$ " holes spaced 2 inches by 3 inches apart.

Write for nearest dealer's name or write us direct

BERRIEN TOOL & DIE CO. Eau Claire, Michigan

and invaluable performance of its veteran members, continues to neglect obligation to record this phase of history . . . Every one of the oldtimers who dies without having his tale related for the records and his mementoes preserved in a PGA museum of golf, takes with him some of the distinction that the pro organization ought to preserve for the prestige of the profession.

Robert Trent Jones has blueprinted layout for Glen Head, L. I. district for group headed by Graziano Zarra, a contractor . . . Jones also working on another course to be built in Huntington, L. I. area . . . Pepsi Cola out as sponsor of PGA Long Island tournament which is scheduled for July 23-26 . . . Show will go on on these dates but a new sponsor has to be found . . . Phil Gunther now mgr. at Sleepy Hollow CC in N. Y., succeeding Hubert Clark, who has retired . . . Gunther moved from Essex County (N. J.) CC.

Fire in storage barn at Winged Foot consumed all the Open equipment that Mararoneck club had bought from Southern Hills CC in Tulsa . . . Ropes, scoreboards, direction signs, etc. were lost in the flames . . . Doug Sanderson now pro

at Rumson (N. J.) CC, taking job vacated by Art Marks . . . Alliance (O.) Machine Co., which is holding big LPGA tournament, July 16-19, had hoped to make it an international affair but ran afoul of expense situation in regard to amateurs . . . Europe has no lady pros.

Israel plans to open its first course this summer . . . Bonnie View CC, Baltimore, putting half-million into remodeling and expansion of clubhouse . . . George Torrey, who recently bowed out as pres., cited for great job he did during tenure with Maryland State GA by Baltimore Sun golf writer, Bob Sommers . . . Wally Paul succeeds Ed Metro as pro at Warrington (Pa.) CC . . . Ed C. Mullen, who long dreamed of forming a golf club for the "average Joe" has one under construction in Mt. Nebo, Pa., near Pittsburgh, and is looking for members . . . It will be an 18-hole layout covering 212 acres.

Fullerton, Calif. city officials favorably disposed toward building a new muni course . . . Louisiana State U. all set to build clubhouse for its course . . . Pine Bluff has 18-hole course in future municipal park development plans . . . Palm Springs, Calif. city council votes to buy

KROYDON **CARDINAL** EXCELLENCE

sold thru Pros EXCLUSIVELY!

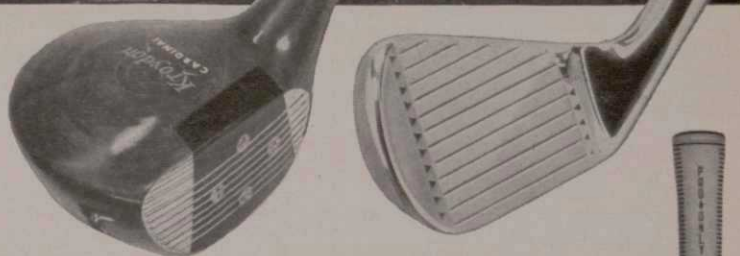


Now . . . Kroydon Cardinal Excellence is endorsed by Tommy Bolt!



Tommy Bolt

National Open Champ in '58 heartily endorses KROYDON CARDINAL EXCELLENCE! KROYDON CARDINALS are his kind of club!



Fussiest golfers (like you) demand the finest . . . and *now* the finest means the *new* line of KROYDON CARDINAL clubs! What does KROYDON CARDINAL excellence mean? Here's the story . . .

KROYDON CARDINAL EXCELLENCE means clubs that are "custom built"!

KROYDON CARDINAL EXCELLENCE means clubs that are precision-built!

KROYDON CARDINAL EXCELLENCE means clubs with Pro-Fit Shafts!

KROYDON CARDINAL EXCELLENCE means clubs with "custom built" balance!

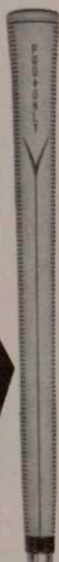
KROYDON CARDINAL EXCELLENCE means woods with amazing Dur-O-Lon Finish . . . the weatherproofing that won't wear off!

NOW! KROYDON CARDINAL EXCELLENCE MEANS ALL NEW **GOLF PRIDE GRIPS!**

Kroydon 
CARDINAL CLUBS

Golf Pride fine line . . . the newest, the best grip any golfer can use . . . is now standard equipment on every KROYDON CARDINAL club! 26.6% of the players in the '58 National Open used Golf Pride Grips! Now they're yours at no extra cost on KROYDON CARDINALS!

*(of course, prime leather calf/skin grips are also available)



registered **masterpieces** —sold thru golf pros only!

KROYDON CORPORATION • P.O. Box 89 • Melrose Park, Ill.

NOW
constant compression
golf balls you can recommend
to help your golfers

PLAY MORE CONSISTENT GOLF

New Dynamatic SWEET SHOTS by Worthington

Maximum distance — unfailing accuracy — because new Sweet Shots are made under the greatest precision controls ever achieved. The secret is Worthington's complete control of compression through new *dynamatic* winding. And every Sweet Shot is individually compression-tested to make sure it meets the compression level stamped on its sparkling white cover. Each new Sweet Shot is exactly like the last — precision-made to assure your golfers consistent performance *every time!*

Worthington
ELYRIA, OHIO

Premiere Name in Golf Ball Developments
Since 1904

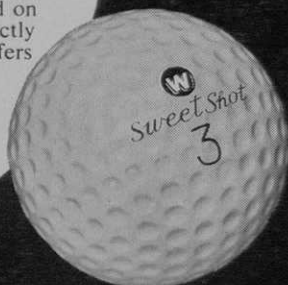
**RECOMMEND THE RIGHT SWEET SHOT
TO MATCH EACH GOLFER'S SWING**

DYNA 90 MATIC

Built to the 90-compression level for the majority of "smooth-swinging" better golfers.

DYNA 100 MATIC

For experts only! Gives hard hitters all the extra distance built into this 100-compression ball.



**SOLD ONLY BY
GOLF PROFESSIONALS**



140-acre site for municipal course . . . Caldwell, Ida., Golf Assn. wants to convert 160-acre farm, owned by city, to golf course . . . It was willed to city for recreation purposes . . . DeAnza Desert Colony CC, Borrego Springs, Calif., formally opened in February.

Norman G. Geaser, Bangor, Me., planning to start building course in April to plans of E. W. Tarbell and Associates . . . First 9 to be ready by Sept. . . . Lorain, O. citizens trying to persuade Sheffield village council to build golf course in the village . . . Larry Cherry, mgr. of Oklahoma City G & CC for last 12 years, has resigned to go into the motel business . . . Local golf enthusiasts making contributions to building of Fabens (Tex.) GC course in form of labor, fertilizer, seed.

Bill Bell engaged to design course for Idaho Falls CC . . . It will be located in foothills of Taylor Mountain . . . New clubhouse planned for Eastern Hills municipal course in Kalamazoo, Mich. . . . Greentree CC, Indianapolis, open June 1 with Arnold Koehler as pro . . . Bill Didel designed Greentree course . . . Oliver

Sleppy has resigned as pro at Antioch (Calif.) G & CC to operate a trailer court . . . George Jacobus, pro at Ridgewood (N. J.) CC, who lines up the entrants for Baseball Players Championship, says the ball players are longer off the tee than the pros . . . Ed Kasko, who won this year's ballplayers' title, has been playing golf about three years.

Planning 18-hole course, motel and bowling alley in project at Milford, Conn. . . . Push construction of Green River CC, near Anaheim, Calif. . . . John Popa will be Green River pro . . . To enlarge Great Falls, Mont., muny course.

Homer Herpel will be golf director of North Shore CC overlooking Mississippi near Chain of Rocks bridge at St. Louis . . . Course is being rehabilitated by architect Chic Adams after being out of play for years.

Congressman Shrdlu, who had all his relatives including his two-headed cousin Qaz on the government payroll, doesn't scold about golf courses at military air bases any more . . . One reason is that most of them are paid for by post ex-

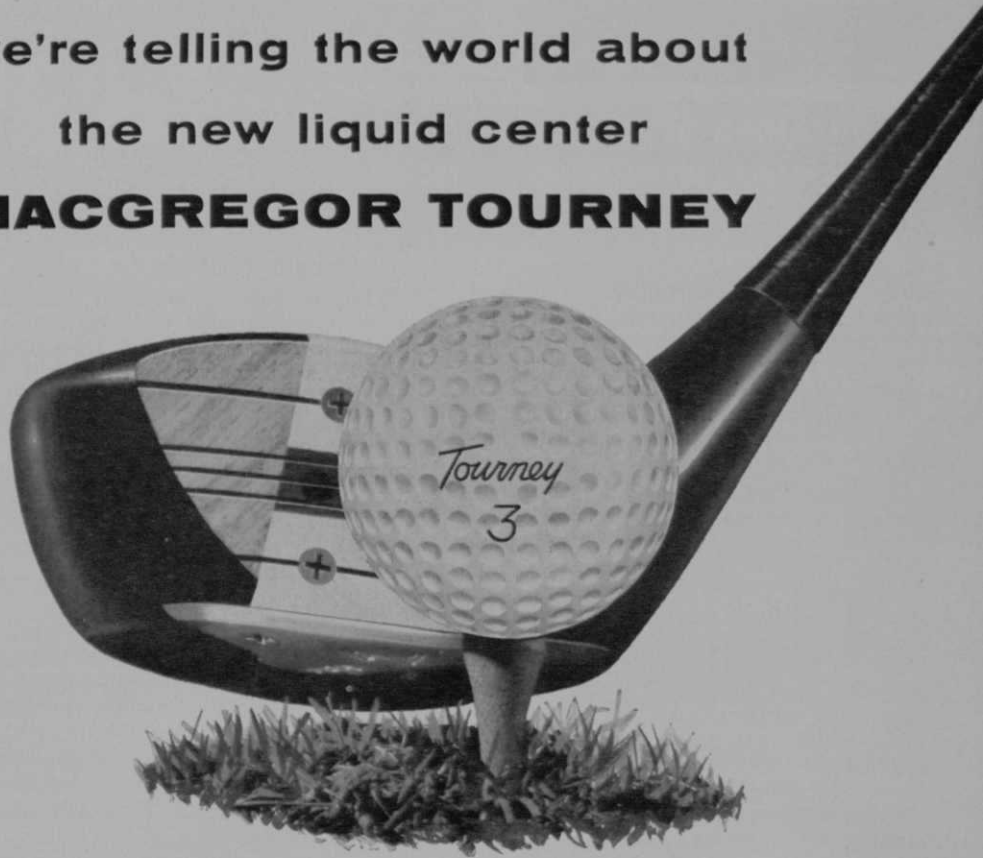


TO HELP YOU SELL MORE..



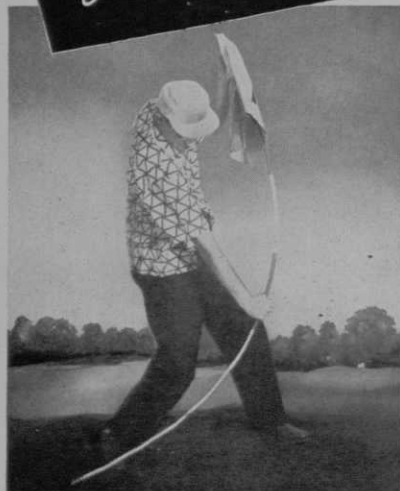
we're telling the world about
the new liquid center

• **MACGREGOR TOURNEY**



The amazing new Tourney . . . plus the strong advertising and promotional campaign in back of it . . . means you're going to be selling more of them this year. Better stock up on MacGregor Tourneys now!

HERE'S THE
Lewis Line
FOR 59!



CONTAINER DEVELOPMENT CORP.

"REGULATION" FLEXIBLE FIBERGLASS FLAGPOLES

AVAILABLE IN 5', 7' and 8' LENGTHS

Lewis Flagpoles always remain straight, won't rust, rot, kink, and are unaffected by weather. These featherlight poles are permanently molded in white and striped with an indestructible red or black epoxy plastic.

*at your distributor or f.o.b. Watertown, Wis. Packaged 9 per carton only.

only
\$3.84*
each
7' length

"REGULATION" BALL WASHER and TEE ENSEMBLE

Now, With Long-Wearing Nylon Brushes
(Interchangeable in all new style washers)

Pro and duffer alike appreciate the really clean balls washed with the Lewis Washer. Tamper-proof, weather resistant, durable, low cost.

For a well-dressed course, see the complete ensemble which includes: washer and data plate with interchangeable numbers, waste container, and tee towel . . . all mounted on a sturdy tee stake.



- 415 Monroe Street
- Watertown, Wisconsin
-

change profits . . . Another reason is that they help get reenlistments of men on whom a big amount of specialized education money has been spent . . . And not the least reason is that the air branches must have a lot of personnel on the post and in good condition because if they have to go to work they've got to be right handy to their ships.

Memphis Park Commission appropriates money for course in Frayser Park . . . Thomas Densmore, Attleboro, Mass., plans to build course at Plainville, Mass. . . . Waynesboro (Va.) CC to enlarge from 9 to 18 . . . Residents and newspapers of Garden City, N. Y., worried about Cherry Valley Club raising enough to buy its property from Garden City Co. and prevent using course site for housing development which may raise taxes and downgrade residential desirability of community . . . Non-golfers now realizing golf club is big bargain, taxwise, to the community, as it doesn't send any kids to school, need a lot of street and alley maintenance, big expense for storm and sanitary sewerage systems, water facilities, street lighting or fire and police protection.

June 6—National Golf Day

Saturday, June 6, has been selected by the PGA as National Golf Day. Tommy Bolt, USGA champion, and Dow Finsterwald, PGA Championship titleholder, will meet that week at Happy Hollow CC in Omaha and the winner's total will be the score the country's golfers will shoot for to earn "I Beat the Champion" medals. Entry fees, as usual, will be \$1.00 and contestants must get their round that counts in between May 31 and June 6.

Interesting campaign being conducted in Wilson (N. C.) Times for getting a country club in Wilson . . . Entertaining column by sports writer, Johnny Sands, in Augusta (Ga.) Chronicle-Herald on Aiken munny course pro, Orville White, one of the nicest guys in pro golf and at one time a top tournament contender.

Eastern Amateur at Elizabeth Manor CC, Portsmouth, Va., will get live television coverage this year on a regional basis, says Chmn. George Skinner . . . Station WAVY-TV will give the final match on a Sunday afternoon time, off
(Please turn to page 102)



New TORO Greensmaster^{*} has constant cutting-weight of only 44 pounds!

Think of it—a greensmower that weighs only 156 lbs. altogether, yet the cutting unit never puts over 44 lbs. pressure on the green. And that's only part of the story of the new Toro Greensmaster!



DIS-ASSEMBLED MOWER shows simplicity of design. Supporting fork, attached to traction unit, takes weight of grass catcher. Cutting unit mounts independently.

This remarkable machine, the result of several years of study at the Toro Research and Development Center, is built in three separate units: the traction unit—consisting of 3 hp engine, gear box, soft-rubber traction drums and handle; the catcher unit—connected directly to the traction unit by a sup-

porting fork with rollers; the cutting unit—a 21-inch, 12-blade reel with 2 short-section rollers in front, 3 in rear—mounted between catcher and traction unit and completely independent of both. Units can be assembled or disassembled in minutes without tools.

Look over the many features of the new Toro Greensmaster. Or better yet, drop us a card and we'll have your nearby Toro distributor show you *on your own greens* why the new Toro Greensmaster has no equal on the market!

^{*}A registered trademark of the Toro Mfg. Corp.

TORO

TORO MANUFACTURING CORP.

3049 Snelling Ave. • Minneapolis 6, Minn.

To build fine turf with these superintendents use



Walter P. Harkey, Superintendent of the Charlotte C. C., Charlotte, N. C., who uses Du Pont "Uramite" as the basis for his nitrogen fertilization program.

"... helped give coverage of greens in 6 weeks... free labor for other important work"

reports **Walter P. Harkey**, Superintendent,
Charlotte Country Club,
Charlotte, N. C.

"We planted 328 Bermuda grass around June 1 on all greens," says Mr. Harkey. "Du Pont 'Uramite' was applied about two weeks later at about 20 lbs. per 1,000 sq. ft. We opened the first nine holes six weeks later. I credit the slow, uniform supply of nitrogen from 'Uramite' with helping to get coverage of my greens in this short time. 'Uramite' also helped free some of my labor for other important work that had to be done at this time. I've been well satisfied with the results we've had this season from 'Uramite'."



•Portion of the Charlotte Country Club, where Walter P. Harkey, Superintendent, keeps putting greens in consistently good playing condition with high-quality nitrogen from Du Pont "Uramite".