

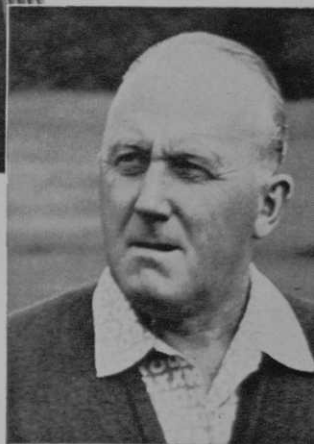
For deep-colored, lively,
grainless greens that let a putt
run true... *Vertical Cut* regularly
with the low-cost, economical

HENDERSON THIN-CUT



HERE'S A HAPPY USER
who says,

"I sure am sold on this new machine and I am sure that every member of our association will benefit from its use..."



GEORGE RAMSDEN
President
The Northeastern Golf Course
Superintendents Association

Here's a top quality vertical cutting machine—the Henderson Contour Thin-Cut Model 18T—priced so low that it's within the budget of every golf club.

It's both amazingly low in cost and inexpensive to operate. It has become widely used by greenskeepers all over the country because it saves time, money, and back-breaking labor while keeping greens and tees in tip-top shape. You can pay much more but you can't buy better. For the complete story, write...

HENDERSON MANUFACTURING COMPANY
FISHER, ILLINOIS

User experience shows builds better



States **Andrew Bertoni**, Superintendent, Meadowbrook Country Club, Northville, Michigan (above, left, with his ground crew on one of Meadowbrook's greens): "When Du Pont first introduced 'Uramite' in 1955, I tried some on a problem green. Today, it needs no special handling and has developed into one of my better greens. Other areas I've treated with 'Uramite' have become the finer pieces of turf on the course.

"We've used more 'Uramite' each year since 1955—and I've become more and more impressed with the results it brings. The benefits seem to multiply with repeat applications. Once a good base level of nitrogen is established, 'Uramite' keeps the nitrogen at the right level for best plant growth."

that Du Pont URAMITE[®]

FERTILIZER COMPOUND

greens and tees



Says **Winnie Cole**, *Golf Professional, Bayou DeSiard Country Club, Monroe, Louisiana* (above, left, with Bish Johnston of the club greens committee, on the 18th green at Bayou DeSiard): "In the past two years, we've used 'Uramite' as the base of our fertilizer program on Bermuda Grass greens and tees. The color and texture have improved. 'Uramite' is easy to apply, improves the quality of turf. That's why we expect to use it on all our greens and tees again next year."

URAMITE...the nitrogen with built-in control...

is 38% nitrogen. Applied any time of the year, "Uramite" resists leaching... supplies nitrogen uniformly to assure your turf long-term, healthy

growth and vitality. Uniform granules of Du Pont "Uramite" are free-flowing, clean and completely odorless. See your supplier today.

E. I. du Pont de Nemours & Co. (Inc.)
Industrial and Biochemicals Dept.
Wilmington 98, Delaware

Chicago 30, Illinois.....7250 N. Cicero Ave.
Philadelphia 3, Penna.....1616 Walnut Street
Los Angeles 58, Calif.....2930 E. 44th Street
In Canada:
Du Pont of Canada Limited.....P.O. Box 660,
Montreal, P. Q., Canada



REG. U.S. PAT. OFF.

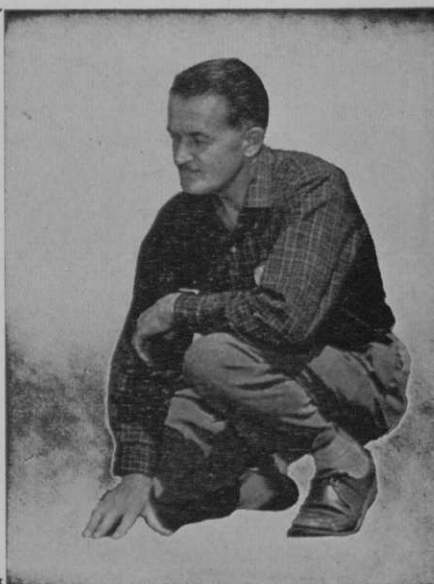
BETTER THINGS FOR BETTER LIVING... THROUGH CHEMISTRY

URAMITE[®]

FERTILIZER COMPOUND

Grau's Answers to Turf questions

If you've got a question you want Dr. Fred V. Grau to answer, please address it to Grau Q&A, Golfdom, 407 S. Dearborn, Chicago 5, Ill.



WHAT HAPPENED?

This is the time of the year when temperatures soar almost out of sight, when periods of drought are interrupted by torrential downpours and suffocating humidity and when grass diseases run riot. Truly, these are times that try men's souls. Grasses are weakened to the point where almost any shock "knocks them to their knees" and from which they are very slow to recover. There will be some grass lost and patching will be necessary. Some greens will be affected — others will stay beautiful. Some courses will suffer more than others. Golfers who play at different courses start making comparisons. In some cases the talk gets out of control and someone gets hurt — usually the person who least deserves it.

What is behind these summer troubles? Why are there such great differences between greens and among courses? What can be done about it?

First, the least trouble occurs on greens that are properly built to begin with — good drainage in the base, porous soil for rapid internal drainage, surface contouring to promote rapid removal of excess water from the surface (no pockets) and a good grass. Trouble can occur even on well-built greens but it will be of short duration and healing will be more rapid than on poorly-built ones.

Examine the Background

Here, for example, is "the worst green on the course." Never does it look quite

right. The turf is thin and algae is prevalent. It is surrounded by trees. A slight error in application of a caustic material results in large blotches of brown grass. Injuries are slow to heal. Repair plugs of sod begin to die. Disease is rampant. The situation looks hopeless. Someone asks, "What have you been using?" Frequently the last material applied or the last machine used gets the blame for the whole sickly mess. This, obviously, is very unfair.

Let's examine the background. The green was pushed together with a bulldozer using local soil, mostly clay. No drain tile was installed. A few yards of sand was spread and tilled into the surface. There was just enough sand to create a fair grade of concrete out of the clay. The green, in settling, developed pockets. On a hot afternoon, a sudden shower leaves scalding water standing on the grass with no place to go but up. Soon the traffic starts and the soft, parboiled grass has little resistance to the scuff of spikes — so, it dies! It dies first in the narrow channel where all of the surface water is concentrated and emptied on the approach.

That Basic Construction!

Other greens on the course, which were built properly the first time, suffer not at all under precisely the same treatment given to all greens. The obvious conclusion is that the basic difficulty lies mainly in the original construction which, for one reason or another, never was correct-



The beautiful Lakeside Golf Course, Burbank, Cal. has Transite Pipe throughout its irrigation system.

Transite cuts irrigation costs 5 ways ... keeps courses greener, too!

For all its quality and dependability, Johns-Manville Transite® Pipe is surprisingly economical. It actually reduces irrigation cost in five different ways:

1. Design Savings Transite's interior will not be roughened by tuberculation . . . stays factory smooth to assure full water flow. This means you can use smaller diameter, less expensive pipe sizes.

2. Installation Savings Transite is lightweight, easily installed. As few as two men can quickly assemble an entire 18-hole system.

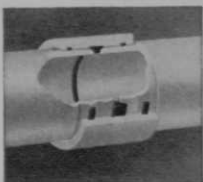
3. Pumping Efficiency Again Transite's

lasting smooth interior pays off by reducing water turbulence to reduce fuel costs.

4. Saves Water Transite's Ring-Tite® Coupling stays tight for the life of the system.

5. Minimizes Maintenance Made of rugged asbestos-cement—Transite cannot rust, resists all forms of corrosion.

The Transite Ring-Tite Coupling saves water loss . . . speeds and simplifies installation.



JOHNS-MANVILLE



JOHNS-MANVILLE
Box 14, New York 16, N. Y.
Without obligation send me
further information on
Transite Pipe for golf
course irrigation systems.

Name _____

Address _____

City _____ State _____

FOR A

Better Drive

TO THE COURSE... ON THE COURSE

GOULD-NATIONAL'S MR. BIG

The battery that made the golf cart a success. Mr. Big is oversize — a battery with tremendous starting punch and staying power. Built to take long, hard use on the golf course and bounce back to life with regular recharging. For extra distance tee off with Mr. Big.



GOULD-NATIONAL BATTERIES, INC.
SAINT PAUL 1 MINNESOTA

ed. Players, knowing nothing of green construction, are quick to judge and to compare. "Look at the greens at my course — nothing wrong with them and it's been hot there too!" they exclaim.

Now, if ever, is the time to develop patience and understanding. It isn't the first time a green has been lost — nor will it be the last! Again, it is nature's way of telling us how poorly we prepared for growing one of the most exacting crops known. She provided an opportunity for us to rebuild and correct the original errors.

This Vacation Hurt

We have pointed to poor construction as a major basic reason for weak turf. Now let us examine other factors. Weak grasses that have been coddled and spoon fed for years just can't take it when the going gets rough. We recall a course that had been babied by one man for 25 years with no understudy. When he finally took a vacation, the greens wouldn't respond to new management and most "went out."

"Uniform application" is tremendously important. Too often we see damage done in streaks or patterns which correspond exactly with the movement of the man or the machine which applied a material. This is the fault of neither the material, the grass, nor the construction. It is the



Grau photo

Dr. Felix Juska (center) discusses preparation of Bermuda plots with two assistants in preparation for the U.S. Dept. of Agriculture field day, Aug. 4, held in Beltsville, Md.

human element that is at fault.

Then we must recognize that some mighty powerful new chemicals are being recommended and used, some of which have terrific potential for destruction in only slight overdoses or misapplications. All we can do here is to sound a note of caution and stress moderation. Try it first on the nursery, or on the practice green, then move to the playing turf only after the material has been proved safe and trustworthy under *your* conditions and under the handling of your work staff.



Pro-Grip

is prepared especially for the leather grips of Golf Clubs. It gives a firm, tacky grip with light hand pressure, permitting an easy relaxing rhythmic swing. Your accuracy will improve, you'll feel relaxed . . . and those "Extra Strokes" will vanish.



MANUFACTURER'S SPECIALTY CO., INC.

2736 Sidney Street

St. Louis 4, Mo.

Everyone does the best he knows how. No one likes to lose turf. So far as we know, no system is foolproof nor can it completely prevent loss of turf when the going is really rough. The point to remember is, let us learn all we can about the causes and profit from any mistakes that may have been made.

South's Worst Pest

Q. Is there anything new on silver crab or crowfoot grass? This still is our worst pest in the South. (Louisiana)

A. The important thing about goosegrass (crowfoot) is to avoid planting the seed (which you do when you use unsterilized soil for topdressing). The next step is to create strong, dense, sturdy turf by adequate fertilization. Goosegrass can be choked out of bermuda turf by fertilizing sufficiently.

There are several forms of di sodium methyl arsonate which are very effective in reducing or destroying this weed. Consult your Experiment Station for detailed advice.

Is it possible that diseases have thinned your turf to let the crowfoot invade? Perhaps a change to a better strain of grass would help.

Sterilized Topdressing

Q. We recently completed topdressing our greens with the following preparation: manure,

sawdust, sand and activated sewage sludge. This mixture was run through a hammer mill for mixing and to pulverize it. Now we have several kinds of weeds and toadstools growing. What would be the best procedure to sterilize this mixture before topdressing? (Wyoming)

A. Until you have sterilized your topdressing mixture, it would be far better to use no topdressing at all. When you do sterilize it, most of the nutrients in the manure and the sludge will be released so that they will be quickly available. Much of the nitrogen may be lost into the atmosphere.

Two materials used for sterilizing soil are Dowfume and Vapam. Your golf course supplier can give you details on the two materials and the methods of using them.

Poa Annua Invasion

Q. During the past two years our greens have shown an increasing infestation of poa annua. What treatment do you recommend to prevent further encroachment of the bentgrass? (Nebraska)

A. It would be wonderful if it were possible to wave a magic wand and say, "Poa annua, begone!" but that seems like a remote possibility. The invasion of poa annua is so largely tied up with management that it seems necessary to review the methods by which it is encouraged. Then, by reversing our thinking, we may come a little closer to how to prevent its spread.

Poa does best when soils are saturated con-

\$AVE

10% to 25% on your golf course supplies

WE SHIP DIRECT

A complete line of —

LIQUID FERTILIZERS
FUNGICIDES
INSECTICIDES
HERBICIDES
WETTING AGENTS

Suppliers to the golf course trade since 1939.

Write for Catalogue

American Liquid Fertilizer Co., Inc. • Rokeby Chemical Co.
Marietta, Ohio • P.O. Box 267 • Phone: FR 3-1394

tinually. It suffers and may disappear when moisture levels drop and poa wilts.

Poa invades best when competition is weak. You may have weak grasses to begin with, or the grasses you have may have been weakened by disease or by malnutrition. Damage to turf during the period when poa is germinating will provide ready means for invasion.

With frequent light watering, poa will thrive at the expense of sturdier grasses which can survive with infrequent deep soakings. When drainage is poor, it may be necessary to water lightly and often to maintain any growth. Under these conditions we may expect to live with poa.

Maximum balanced nutrition will strengthen perennial grasses, helping them to resist poa. Periodic hunger cycles are an aid to poa.

Chemicals will kill poa. Sometimes they kill bents, too. Lead arsenate is a relatively mild chemical that will discourage poa if the phosphorus content of the soil is low. With high soil P, lead does not work well. Some of the newer materials kill poa easily at very low concentrations. The results are not always happy. We greatly prefer the management approach.

Briefly summarizing, poa can be discouraged by less watering; by letting the turf show moisture stress occasionally; by feeding the bents at maximum levels; by controlling diseases so that they do not weaken turf and invite poa invasion; by twice-a-year use of arsenate of lead; by allowing phosphorus levels to drop; by using the strongest bents; by improving drainage.

Men's Amateur

The USGA Amateur Championship will be played at Broadmoor GC, Colorado Springs, Colo., Sept. 14-19. Entries are open to male amateurs with handicaps not over four strokes and must be received by the USGA by Aug. 12. Sectional qualifying rounds will be played at 34 sites throughout U. S. on Aug. 31 and Sept. 1. The championship proper will be played at match in eight rounds. Charley Coe of Oklahoma City is defending champion.

Women's Amateur

USGA Women's Amateur Championship will be played Aug. 24-29 at Congressional CC, Washington, D. C. Entries must be received by the USGA by Aug. 6. There are no qualifying rounds and the championship will be played at match in seven rounds. Entries are open to women amateurs with handicaps not over six strokes and will be accepted from the 128 applicants with lowest handicaps. Last year's vacancies will be offered to alternates in order of handicaps. The field is being limited for the first time. Anne Quast, Marysville, Wash., a June graduate of Stanford University is defending titleholder.

The **MASTER** Automatic Ball Washer



Designed for Golf Driving Range Use

A compact unit that will handle up to 10,000 balls per hour, to provide clean practice balls for your customers.

In use, balls are dumped on inspection tray, after soaking, and are fed into the inlet tube to the washer, where they are picked up by a stream of water and carried into contact with the revolving brush. Balls are discharged at the top and fed to a receiving basket for drying.

Sturdily constructed, the MASTER Ball Washer carries a full guarantee and is designed for a lifetime of service.

Reasonably Priced. Write for Literature.
Dealerships Available

MASTER MACHINE CORPORATION of San Diego

P. O. Box "U" • 900 West 13th Street • National City, California

Florida Turf Conference to be Held Sept. 15-17

Seventh annual University of Florida turf management conference and field day will be held Sept. 15-17 at Dan McCarty Hall, University of Florida, Gainesville. Three types of sessions will be held: classroom, discussion and review of research and development. These will be followed by a visit to the University turf plots. During the conference, Florida Turf Assn. will hold its annual meeting and election.

1960 IGA Matches in Ireland

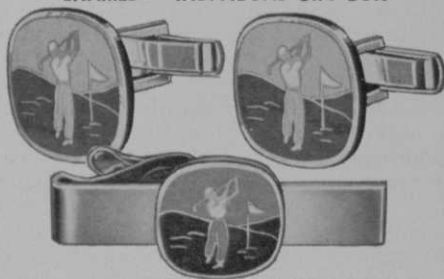
The 1960 International golf championship and Canada Cup matches will be played at Portmarnock GC, Dublin, Ireland, June 23-26, Frank Pace, Jr., IGA pres. and Dr. William O'Sullivan, pres. of the Golfing Union of Ireland, have announced.

In the six years the international matches have been played they have been held in Montreal (twice), Washington, D. C., Wentworth, Eng., Tokyo and Mexico City. This year's event is scheduled for the Royal Melbourne GC in Australia, Nov. 18-21. A twosome from 34 nations ordinarily takes part in the two competitions.

QUALITY GOLF AWARDS

Matching Men's Jewelry Items in Heavy Gold Plate

THREE COLOR JEWELLERS HARD FIRED
ENAMEL — INDIVIDUAL GIFT BOX



Add 10% F. E. Tax

RW-178 —TIE CLIP	\$1.50
RW-503TT —TIE RACK	1.25
RW-397E —KEY RING	2.25
RW-740D —MONEY CLIP	1.75
RW-503NR —CUFF LINKS	3.75

GOLF TROPHIES AND PRIZES

High Quality—Lowest Prices—Fast Service
Write For Free Golf Catalog #539 and
Pro Discount Today

THE TROPHY AND MEDAL SHOP

Dept. G-8

Chicago 3, Ill.

10 S. Wabash Avenue

CENtral 6-5018

Keep golf cars "on the go" with AutoMAC



Get maximum service and financial returns from your electric golf cars. Keep them charged with AutoMAC. Fully automatic . . . turns itself off . . . saves power consumption. Prolongs battery life and maintains original battery capacity. Built to resist fungus and moisture, too.

Bulletin No. 101A9 gives complete specifications and prices. Call or write for your free copy today!

ELECTRICAL
PRODUCTS



Motor Appliance Corporation

5741 WEST PARK AVENUE • ST. LOUIS 10, MISSOURI



Swinging Around Golf

(Continued from page 22)

Petersburg, Va. . . . Ed Vaden is pro . . . Macon (Mo.) members buy the 9-hole club from Bert Thieman . . . Stefrose Land Co., Cleveland, plans to build 18-hole course at Columbia, O. . . . North Scottsdale (Ariz.) CC adding 96 residential units to 12 already completed facing course.

Clyde Terwilligar heads organization to build 9-hole course at Starke, Fla. . . . Montrose Land Co. to build 9-hole course at Montrose, Colo. . . . Port of Oakland, Calif., offers to lease 165 acres for construction of golf course . . . Fred Seibel, for years caddiemaster at George S. May's Tam o Shanter CC (Chicago dist.) now is pro at Richard Hauff's Mt. Prospect CC northwest of May's club . . . Eddie Rezek, also formerly with Tam o Shanter now is mgr., Mt. Prospect CC.

Businessmen campaigning to get golf club built at Menominee Falls, Wis. . . . Glendale, Ariz., considering building course . . . Womack Development Co., Phoenix, developing course and home sites project, Coconino CC, near Flagstaff, Ariz. . . . Louis Berlanti, New York contractor, plans development of community includ-

ing golf course at Boca Ciega Bay, near St. Petersburg, Fla.

Joe S. Pittman and Dr. J. W. Dobbs head group building country club at Enterprise, Ala. . . . Larkhaven, 9-hole course owned by Barron Connell at Charlotte, N. C., opens . . . Covington (La.) CC adding second 9 . . . Bill Bell presents to Ventura County commissioners plans for 18-hole public course near Ojai, Calif.

Chick Papousel, Dunlop salesman in Chicago territory, broke his left wrist when ladder broke while he was working on gutters on roof of his house . . . Chick says moral is stay on a safe golf course instead of doing home work . . . A Japanese company is designing a remote-controlled golf car, says Products Engineering . . . Car is controlled by 5-button, pocket-sized transmitter, carries two persons, can climb a 30-degree incline and is stopped automatically by a device on front bumper if it touches an obstruction.

A Chicago district country club answering complaints about prices of its dinner dances in a bulletin: "Try taking your girl friends out on the town some Saturday evening — the Pump Room, Drake, Chez Paree, etc. — After the door man, the head waiter, the parking attendant and a few others have been taken care of,