



New 7-gang TORO hydraulic cuts mowing time 50%!

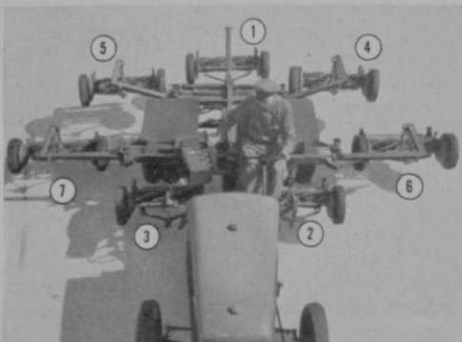
Pull down the center lever on the control console that's right by your elbow; 3 gang units lower swiftly, gently into mowing position—two ahead of the rear wheels, one centered in back. Pull down controls 2, 3, 4 and 5. Each one instantly lowers another gang unit into place. And you lift or lower the units

in any order to give any combination of gangs you need—3, 4, 5, 6 or 7 units at the flick of a lever. You never leave your seat!

Here is a 7-gang mower with speed and flexibility unlike any other combination on the market. It slims down to pass through narrow areas, fans out to mow up to a 15-ft. swath in seconds. You can mow on both sides of roadways using the wing units only—even mow boulevards or other strips with one or two wing units lowered to turf height. It's actually many mowers in one!

Look over the features of this rugged machine. Or better yet, drop us a card and let your nearby Toro distributor *show* you on your own grounds how the new Toro 7-unit hydraulic Golfmaster* can start saving you money *today*!

*A registered trademark of the Toro Mfg. Corp.



COMMAND VIEW of all cutting units makes handling easy. Gangs 1, 2 and 3 are controlled by single lever in center of console. Gangs 4, 5, 6 and 7 are individually controlled by relatively located levers on console.

TORO

Toro Manufacturing Corp.

3047 Snelling Avenue • Minneapolis 6, Minn.



HOW GOOD CAN IT BE?

- a - Last Month, 20% of the Tournament Pros Switched to Joyce
- b - Last Year, Last Month, Today, Golfers are Buying Our Shoes Like Mad

The reason must be that our shoes are better for golf! The flat sole has exclusive advantages of lightness, comfort, and balance that help men and women play better. Can you think of *any* active sport except golf that uses shoes with heels?

So, if your members and players will feel better, look better, and play better golf in Wm. Joyce shoes you may be sure this is the kind they will buy (some place). No better rule exists in retailing than selling people what they want.

3

WAREHOUSES, FAST SERVICE:
 Hillside, Ill. • 4100 Warren Ave. • LI 4-9350
 Seattle, Wash. • 117 Madison Ave. • MA 4-1740
 Pasadena, Calif. • 81 Masonic Court • RY 1-5141

WIRE FOR COLOR CATALOG

BOWEN, INC.

79 Masonic Court, Pasadena 1, California

California Supreme Court Reverses Decision on Club- Caddie Relationship

California's Supreme Court has reversed the decision of the second dist. Court of Appeal reported in the April, 1958, issue of *GOLFDOM* (p. 70). That decision in a tax case ruled that a caddie is an employee of the club rather than of the player for whom he is caddying and held the club liable for payment of unemployment insurance levies. In the April article a statement was made that the decision was not wholly clarifying and it was indicated that the Supreme Court might take an opposite view.

In reversing the decision of the district Court of Appeal, the Supreme Court reviewed the controversy on the subject which has been going on for several years between the California legislature and the state's tax authorities, as well as federal rulings which have freed golf clubs from the payment of such taxes. In its opinion holding that a caddie is employed by the player, the Court said in part: "The primary function of the caddie is to carry the golf player's clubs

from the beginning to the finish of the player's game. All the duties performed by the caddie while performing that function are at the sole and exclusive direction of the player. The player alone tells his caddie what he wants him to do while carrying the clubs. No one connected with the plaintiff had a right or ever attempted to interfere in any way after the game started. This placed the caddie under control of the player."

The Court added that there was "no contract of hire between plaintiffs and caddies, either express or implied. The mere fact that a person is allowed access to a course solely by sufferance of the club so that he may become a caddie, does not create an employer-employee relationship. Plaintiffs merely granted permission to persons to come to the clubs and offer their services to players. They were not hired by the clubs but merely permitted to avail themselves of the facilities provided by the clubs. They were not paid by the clubs out of club funds, but entirely by cash, either directly or indirectly by the players." (*Manchester Ave. Corp. and Virginia CC v. Stewart*, 325 P.2d 457, May 16, 1958.)

SUPERIOR QUALITY
makes
CHAMPION GLOVES
the **GOLFERS CHOICE!**

Finer, softer leathers . . . unexcelled workmanship . . . many exclusive patented features . . . that's what the **CHAMPION** golf glove line offers. They're easy to sell and your profits go up!



195
 Exclusive
 soft snap tab



196
 Smooth imported
 capeskin in popular
 pastel colors



151
 Patented elastic
 inserts between fingers



91
 Patented
 lastik back

**ALL CHAMPION GLOVES
 ARE NYLON STITCHED!**

Send for new catalog on complete line.

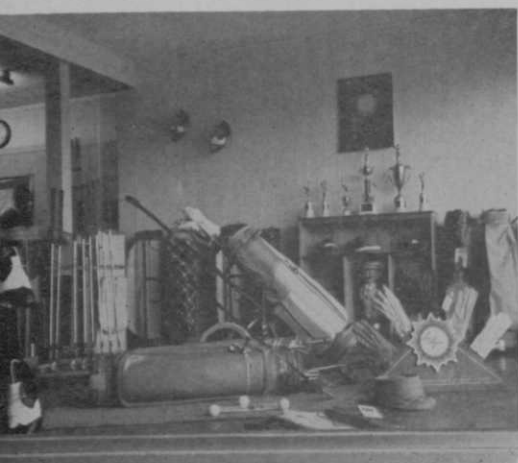
Champion
 GLOVE MANUFACTURING CO.

309 - 11 COURT - DES MOINES, IOWA



Wife of Ft. Myers pro is on constant lookout for new fashions that are displayed in this window.

Wingate's Windows Reflect High Class of His Shop



Price tags usually are affixed to items shown in general display window. The reason: they get men interested enough to come in and inquire about the merchandise they see here.

THE shop of Roland Wingate, professional at the Fort Myers (Fla.) CC, is adjacent to the first tee. The tee can be seen from the ball display counter. Players are started via a public address system with a microphone handily located alongside the registration and starting sheet.

The shop is more than a place in which a pro staff sells golf merchandise. It is run on the basis that pro shop operation must be primarily a matter of service and interest to players.

Wingate is fortunate in having a fine business staff. Mrs. Wingate is said by golf salesmen to be one of the smartest businesswomen in golf. The Patterson brothers, Wingate's assistants, are excellent young instructors, businessmen and promoters.

The high character of the department's operation is reflected in the two show windows that flank the front door of the shop.

These windows are changed every two weeks or oftener. One window generally is devoted to women's golf wear and playing equipment. The club, which is a municipal operation, has an exceedingly active women's program and visiting professionals comment that the Ft. Myers women golfers are a very attractively
(Continued on page 97)



Shift to any speed on the GO!

NEW FORD *SELECT-O-SPEED* TRACTOR



Change Selector lever to left or right in less than a minute for greatest convenience, according to type of work. Get full details on new Ford Select-O-Speed from your dealer, or write to Ford Industrial Sales Dept., 2500 E. Maple Road, Birmingham, Michigan.

- 10 speeds forward, 2 reverse; shift to any speed "on-the-go" without clutching when you hit tough spots in grading-leveling work.
- Easy finger-tip shifting up or down under load with no interruption of power. Less operator fatigue and more work output.
- Eliminate FIVE clutch-gear shift movements in every pile-truck-pile loading cycle.
- Save time, fuel and effort. Shifting on-the-go permits operator to match power to the job.

**Greatest
Tractor Advance
since Hydraulics
... and Only
Ford has it!**

**YOU SEE MORE
FORDS
BECAUSE THEY SAVE
MORE MONEY!**



Here is what the Derrick clubhouse and grounds will look like when completed.

Population Bulges, So Edmonton Builds Another Course



Timing device for control of automatic irrigation system, which is diagrammed on panel at right.



Water is pumped more than 100 ft. uphill to this lake. Two bridges provide convenient access for golfers.

DERRICK Golf and Winter Club, a \$1,250,000 venture, is now being completed in Edmonton, Alberta, the gateway to the north and actually the beginning of the great Alaska Highway.

Edmonton, capital city of the oil rich Alberta province, is a rapidly expanding metropolis of some 300,000 people. Its recreational facilities include some of Canada's finest golf courses, curling and skating rinks, but the influx of 12 to 14,000 residents a year have strained these to the limit.

Two years ago, realizing the need for additional golf and recreational sites, together with an urgent need for a large suburban residential development, an Edmonton realtor, Richard C. Legge organized a company to purchase and subdivide a lovely 465 acre tract of land close to the city's southwest limits. Legge divided the land into three nearly equal areas. One consisting of deep wooded ravines and picturesque valley land, was to remain as park land. A second portion was to be subdivided into half-acre residential sites and the remainder developed as a golf club.

At that time, a group of Edmonton oil executives got together with Legge and purchased the course property from his company for their newly planned club which they have since formed and named,

(Please turn to page 66D)



sell the golfer a matched set of DRY FEET

SHOE SAVER keeps feet dry, leather soft, golfers happy, pro shops profiting

If there's anything a golfer dislikes more than a smothered hook, it's wet feet. SHOE SAVER won't make every shot split the pin, but it does keep feet dry on dewy or rain-soaked courses.

SHOE SAVER retails for \$1.00 a bottle . . . an impulse purchase price. Many smart golfers already know what a great job SHOE SAVER does, and countless others are being convinced by advertising in . . .



POST

Field & Stream

GOLF Digest

SPORTS ILLUSTRATED

National advertising plus eye-catching displays add up to a fast-moving 40% profit item for your pro shop. Order SHOE SAVER from your local sporting goods or shoe finder distributor. If they can't supply SHOE SAVER, write direct for the name of your nearest distributor. Address Dept. 1416

**first in
silicones**

DOW CORNING CORPORATION

MIDLAND, MICHIGAN

Du Pont announces . . .

TERSAN

TURF FUNGICIDE

A combination "Tersan"—organic efficiency, wide-range disease control.

*Look what these superintendents say
about "Tersan" OM!*

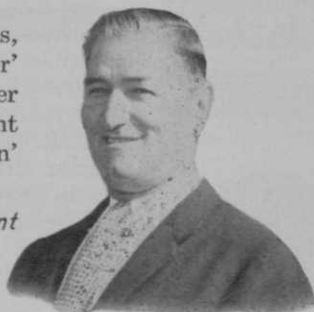


"Last year was a very trying one of heavy moisture and high humidity. We used 'Tersan' OM as a preventive spray every seven days on three greens, and I found no shock and not a trace of disease. It mixes well, leaves no spotty patches. 'Tersan' OM is a fine product."

JOSEPH F. FLYNN, *Superintendent*
Metropolis Country Club
White Plains, New York

"We used 'Tersan' OM on a seven-day basis, or on a preventive schedule on two 'indicator' greens at the rate of $3\frac{1}{2}$ oz. in $3\frac{1}{2}$ gal. of water per 1,000 sq. ft. Although disease was prevalent on greens treated with other fungicides, 'Tersan' OM gave 100% control."

FRANK J. DINELLI, *Superintendent*
Northmoor Country Club
Glencoe, Illinois



AN[®] OM

mercury fungicide that gives new
rol... proven on leading courses!

Now... one product... a combination "Tersan"—organic mercury turf fungicide—is available! Du Pont "Tersan" OM meets the needs of superintendents everywhere for a single, easy-to-use, effective turf fungicide—one that combines the recognized merits of mercury and "Tersan" 75 mixtures.

New "Tersan" OM comes ready to use in 3-lb. containers... eliminates the need for tank mixing... saves time and labor. Du Pont Laboratory Research proved it equal or superior to a freshly made tank mix of "Tersan" and mercury; golf-course superintendents confirmed these results in use.

You'll find "Tersan" OM easy to apply and easy to handle. Chemical composition is uniform, package after package. "Tersan" OM offers users a large safety factor—even when applied at higher than recommended rates.

Order your year's requirements of "Tersan" OM from your supplier NOW! -



REG. U. S. PAT. OFF.

TERSAN[®] OM

TURF FUNGICIDE

BETTER THINGS FOR BETTER LIVING
...THROUGH CHEMISTRY



What is reputed to be the largest green in the U. S. is this 26,000 sq. ft. putting surface at the recently completed Sapphire Valley (N.C.) GC. George Cobb designed the course.

"The Derrick Golf and Winter Club". W. H. (Bill) Brinkworth was asked to design and build the course. He agreed to take on the job and moved from his position as pro-mgr. of famous Jasper Park Lodge GC to Edmonton. Brinkworth got construction work underway last April.

It was agreed that the course be built to the most modern standards. Various water systems were studied and the one chosen for installation was designed by Lew Sparks of California Toro Co. This particular system specified aluminum pipe ranging in sizes from 8 ins. to 1½ ins., all welded, and wrapped with heavy plastic protective tape. Rainbird valves and sprinklers were used and installed at intervals of 100 ft. The system was designed to be semi-automatic with coverage to adequately irrigate fairways that averaged about 55 yards in width. Water comes from a small rather fast flowing creek that is pumped up an 110 foot incline into a man made lake that was primarily built as an irrigation reservoir. It provides a tricky hazard for four different holes and adds much beauty to the landscape.

Soil on the course property is a rich, heavy, clay-like loam that had been previously farmed. A mixture of Kentucky bluegrass and fescue was seeded into fairways and tees. Greens were seeded with Poly Cross bent. Putting surfaces average about 7200 sq. ft.

Arched bridges were built across the lake. They are wide enough to accommodate electric golf cars. About 20,000 trees are in the process of being planted. Because of climate there are many evergreens. There's also an abundance of spruce and pine interspersed among other deciduous trees such as clump and single birch, soft maples, poplars and aspens.

To expedite construction, quite a few

pieces of equipment had to be devised and manufactured on the job. Rollers, cultivators, drag-mats, and a special power seeder with airplane tires were some of the machines used to get the course built.

The last three holes were held up by delays in the water system installation and some re-seeding may be necessary this month. But apart from this, the whole 18 hole course and practice fairways were fully completed in a six month period. This feat is indeed a tribute to Bill Brinkworth, now in his 69th year, and still one of Canada's great golf figures.

Palm Springs Mayor Bids for GCSA Show

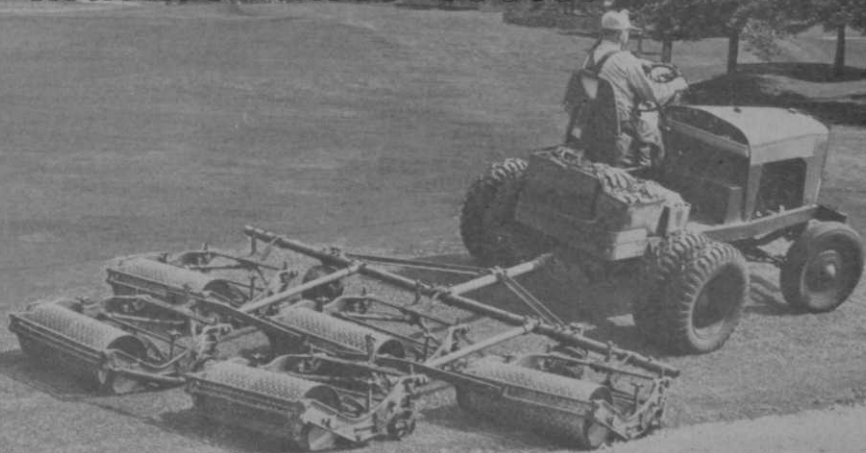
At the joint meeting of the Hi-Lo Desert and Southern Calif. GCSAs, held Mar. 11 at the plush Western Hills CC, Palm Springs, Calif., Fred Bogert, mayor of Palm Springs, told the audience that he was going to do everything possible to bring the national GCSA turf show to that city at the earliest possible time.

Elmer Border, GCSA pres., who attended the meeting, advised Mayor Bogert to make immediate application since the GCSA board of directors is to meet this month and undoubtedly will take such a matter under advisement. The 1960 conference already has been scheduled for Houston.

Bogert said that during the last week in January, Palm Springs can accommodate 2,500 guests.

More than 150 persons attended the joint meeting of the GCSA organization. Warren McCleary was in charge of the field and equipment demonstrations, held at Indian Wells CC, and Fred V. Grau was the main speaker at the education session.

COMPARE maintenance costs!



and you'll buy ROSEMAN GANG MOWERS - - -
Every Time

Why Roseman

High mowing costs, wasted man hours and excessive repair bills are not found in gang mowers of Roseman design and quality.

Save on Repairs

Exclusive non-breakable malleable side frames and bed knife shoes. Tough chrome-nickel alloy steel heavy duty reels with riveted blades—not welded—to avoid hard spots and breakage. Timken adjustable bearings. Vanadium steel bed knives. All assure faithful service for many years with almost non-existent repair bills.

Save on Labor

Exclusive ability of Roseman hollow-roller-drive gang mowers to overhang traps and shrubby beds and cut close to fences and structures eliminates the need for much hand trimming. Hundreds of man hours can be saved or devoted to other tasks.

Save on Time

Roseman mowers are rear drive mowers. They mow faster, more uniformly without kicking up the rear. Faster mowing with considerable savings in time and man hours are the result. To say nothing of smoother cut fairways.

Save on Equipment

Roseman mowers, with combination rough and fairway hitch can be used to mow areas quickly and at less cost. No need for the smaller club to buy an additional gang of rough mowers. Just flip the mowers into high cutting position. Also useful where grass on rain flooded fairways "gets away."

Compare 'em all

You are invited to compare the Roseman mower with any other mower. Be sure and compare Roseman quality, design features, low upkeep costs, and performance. We believe that you, too, will join the swing to Roseman mowers.

**MAKE YOUR NEXT GANG ROSEMAN
WRITE FOR DETAILS TODAY**



ROSEMAN

MOWER CORPORATION

2608 RIDGE ROAD

UNIVERSITY 4-1842

EVANSTON, ILLINOIS, U. S. A.

15

ACCEPTED AS THE
FINEST GREENS ITEMSPAR
AIDE**PAR AIDE****FLAG SWIVEL**

Molded of tough
nylon material and
cadmium plated wire.

**FERRULE**

Anodized aluminum.
Will not corrode.

FLAGPOLES

Fiberglass or Aluminum



**PAR AIDE
PRACTICE GREEN
MARKER AND
PLASTIC CUP**



**PAR AIDE
TURF MENDER
HOLE CUTTER**



15" or 26"

PAR AIDE SAND RAKE

Rakes are constructed of strong
aluminum alloy that will not
rust or rot.



**PAR AIDE
PUTTING CUP**



**PAR AIDE
CUP SETTER**



WRITE FOR CATALOG

PAR AIDE PRODUCTS COMPANY

DEPT. G, 1457 MARSHALL AVENUE, ST. PAUL 4, MINNESOTA

Henson Maples Dubious About Bent at Pinehurst

Numerous players, pros and amateurs, have made favorable comments about putting qualities of Pinehurst Bermuda greens that had been seeded with bent but Henson E. Maples, Pinehurst's supt., isn't satisfied with results.

As many courses in the south are influenced by Pinehurst methods and results, Maples' comment will be of considerable value. He tells GOLFDOM:

"Others have thought that our bent greens are a lot better than I think they are. Perhaps they played this bent in April or May when it finally did get good.

"I'm not ready to go out on a limb and claim that seeding bent instead of rye over Bermuda is the solution to our problems. We're experimenting with it and it will take a lot of work and time to find the right answer.

Heavy Fall Traffic

"Our situation at Pinehurst is different from many courses in that we have very heavy play in October and November just when seedlings are tender and are

trying to get established. Heavy traffic is severe on rye and worse on bent.

"The big trouble seems to be that bent takes so much longer than rye to become established and unless you can get this done before cold weather sets in, you won't have good greens until spring.

"Competition from Bermuda complicates the process with both rye and bent. However, it seems to hurt the bent more since it grows so slowly. The more Bermuda you can get rid of before seeding the better the rye or bent will be.

Answer: Pure Bent?

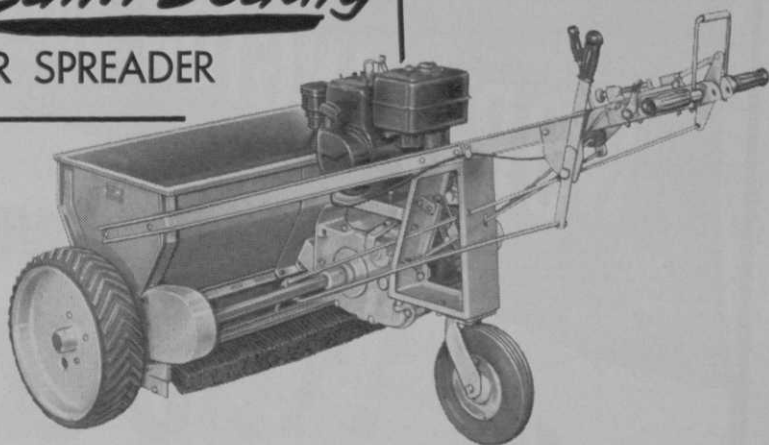
"The real answer (for the better clubs at least) may be pure bent greens if they can handle them during the hot summer. This would require that the men managing these greens be completely re-educated by learning what to do, how and when to do it.

"Even if you have trouble with bent during July and August when play probably is light, is that any worse than having poor greens during the fall and spring transition periods with Bermuda when play is heavier?

"Quite a bit of experimental work is now being done with bents in the South.

(Please turn to page 72)

NEW *Lawn Beauty*
POWER SPREADER



Now Self-Propelled To Save Pushing and Panting



- Top dress and brush *simultaneously*
- Top dress 18 greens *in one day*
- Save over 100 hours *everytime you top dress*

Don't sweat out 18 greens. Spread easy and relaxed behind this engine-driven Lawn Beauty. It moves 200 lbs. of chemical or organic fertilizer, grass seed, lime or insecticide without strain. By using its hand clutch and gear shift, you put this new Lawn Beauty into forward, neutral or reverse. A throttle control and rate control dial provide for choice of speed and accuracy of spread. Brush and hopper extension are standard equipment. NOW, save time, money and back-breaking labor behind a Lawn Beauty Power Spreader.

Fertilize, seed, lime or top dress with Lawn Beauty Power Spreader



SCHNEIDER METAL MANUFACTURING CO.

1814 South 55th Avenue—Chicago, Illinois

Write for
complete infor-
mation today

WORTHINGTON SALUTES -

THE TWO MEN

GOLF



WORTHINGTON MOWER COMPANY