

Fastest Growing Line OF TURF CHEMICALS



Through Research

in our laboratories and extensive trials on the broad reaches of "Clearacres," where we grow fine turf sod and maintain a 9 hole course as well as pitch and putt and practice greens, we are constantly adding to both our knowledge and the Cleary line of control chemicals. Ask your supplier or write us for complete literature.



PMAS

the proven herbicide-fungicide for sure control of Crabgrass, Copper Spot, Dollar Spot, Brown Patch, Snow Mold, Helminthosporium-Curvularia.

SPOTRETE

75% Thiram—for fast economical control of Brown Patch, Dollar Spot, Snow Mold. (Mix with PMAS for complete disease and crabgrass control)

THIMER

Broad spectrum fungicide containing Thiram and Organic Mercury. A wettable powder for the control of Copper Spot, Dollar Spot, Large Brown Patch, Snow Mold, Helminthosporium-Curvularia and Crabgrass.

CAD-TRETE

Broad spectrum fungicide containing Cadmium and Thiram. A wettable powder for the control of Snow Mold, Dollar Spot, Copper Spot and other turf diseases.

"ALL-WET"

Non-ionic organic wetting agent. Makes water wetter for penetration of compacted turf; prevents dew formation. Saves water, saves time.

METHAR (DSMA)

Disodium Methylarsonate. For control of Dallis Grass and Crabgrass. Highest concentration; liquid or powder.

SUPER METHAR

(AMA) Amine Methyl Arsonate. A liquid for the control of Dallis Grass and Crabgrass. Highest concentration; liquid.

CADDY

Liquid Cadmium Fungicide. Safe, modern, economical control of Turf Diseases.

C-531

Cadmium zinc copper calcium chromate fungicide for the control of Dollar Spot, Copper Spot, Brown Patch. Applied as spray or dry-mixed with sand or top dressing.

PM2,4-D

A liquid combination of Phenyl Mercury and 2,4-D for the control of Silver Crabgrass (Goosegrass), Crabgrass, Dandelion, narrow and broad leaf Plantain, Knotweed, Chickweed, etc.

W. A. CLEARY CORPORATION

NEW BRUNSWICK, NEW JERSEY

BELLEVILLE, ONT., CANADA

CHICAGO, ILLINOIS

5

PAR
AIDE

FIBERGLASS POLES

New fiberglass poles have been designed with attention to quality and appearance that has made PAR AIDE products the standard of the industry.

Cap is made of alloy steel cadmium plated button head Allen type screw for positive locking with furnished lock washer.

Body is of molded fiberglass reinforced polyester material. Will not deteriorate in any climate. Available in white with red stripes. Other colors available upon request. Seven or eight foot lengths.

FERRULE
Anodized aluminum.
Will not corrode.



FLAG SWIVEL
Molded-of-tough
nylon material
and cadmium
plated wire.



WRITE FOR
CATALOG

PAR AIDE PRODUCTS COMPANY

DEPT. G, 1457 MARSHALL AVE., ST. PAUL 4, MINN.

Fire destroys clubhouse at Stanton Heights GC, Pittsburgh, Pa. . . . Coleman Golf Corp., Pittsburgh, moves into larger and more modern quarters . . . Its old building had to be torn down to make way for new Civic Arena . . . Three out of four Riverside (Ill.) GC members are opposed to giving up club to Chicago Branch of Illinois University . . . Riverside citizens oppose it because if tax exempt school comes in their taxes will be increased, and utilities sorely pressed . . . City of Chicago has offered University trustees more convenient sites for a school but they seem to have designs on Riverside . . . They can take it through condemnation proceedings.

Los Angeles County will begin operation of its sixth public course, Whittier Narrows, on July 1 . . . Latest report on 1958 National Golf Day shows that the PGA realized a total of \$83,340 . . . Ottumwa (Ia.) CC, which put \$400,000 in its layout 11 years ago, going in for big capital improvement program . . . It's adding 9 holes, enlarging women's locker room and pro shop, building tennis courts and extending watering system to fairways . . . Chic Adams Construction Co. han-



Two types of reels, for renovating and slicing. Removable front roller for putting greens. Grass catcher optional.

Ren-O-Thin

**A LOW-COST RENOVATOR
TO ELIMINATE THATCH**

Ren-O-Thin is built on an entirely new principle that gives it vastly improved performance over any machine of its kind. Vertical cutting knives renovate, slice or thin heavily matted turf; eliminate thatch on running stem grasses; control close growing noxious weeds. Send for circular.

Soilaire Industries

1108 NICOLLET AVENUE
MINNEAPOLIS 3, MINN.

Beautiful Bonita

GOLF CLUB

expanded its
irrigation system
with —

"GUARANTEED

PERFORMANCE"

SEMI-RIGID PIPE

Designed by William F. Bell, Bonita Golf Club of Bonita, California, test-irrigated nine holes with a system using Triangle Semi-Rigid Pipe in 1956. A year later, pleased with the performance of the system, they installed Triangle Semi-Rigid on the remaining nine.

They learned that Triangle guarantees every foot of Triangle Semi-Rigid Pipe to be free from defects in material and workmanship. They found Triangle Semi-Rigid Pipe tops in corrosion resistance; non-toxic; trouble-free when properly installed, used and operated; and extremely economical. Triangle Semi-Rigid is stocked in strategic locations across the country and is backed up by an organization that has produced more semi-rigid pipe than any other single producer.



Your course—can reap the benefits of a Triangle Semi-Rigid Plastic Pipe irrigation system. Get started today by writing for our prospectus on our engineering services and guarantees.

Plastic Pipe Division
TRIANGLE CONDUIT & CABLE CO., INC.
New Brunswick, N. J.

Gentlemen:

- ☐ Please send me my free copy of your prospectus on Golf Course Irrigation.
☐ Please have your representative call.

NAME _____
COURSE _____
ADDRESS _____
CITY _____ STATE _____

TRIANGLE
Plastic Pipe

DIVISION OF
TRIANGLE CONDUIT & CABLE CO., INC.
NEW BRUNSWICK, N. J.



**On the Green and Fairway
tractor-fed ROYERS really
cut turf-care costs**



Cutting turf care costs really isn't much of a problem when you own a "25" or "36" Series Royer Shredder. These tractor-fed models process up to 12 cu. ft. of top dressing in 15 seconds. When "dressing" greens and fairways, quantities like this are important.

"Royerated" top dressings are thoroughly mixed, aerated and reduced to fine particle size. They soon work into the soil, developing luxuriant, healthy turf that can withstand broiling sun and rugged play.

Write today for our new bulletin "Royer Shredders for Turf Conditioning Materials" and the name of your nearest distributor. He'll be glad to arrange for an on-the-spot, obligation-free demonstration.



**ROYER FOUNDRY
& MACHINE CO.**

ROYER

171 PRINGLE ST.
KINGSTON, PA.

dling course building . . . Dave Bonella is pro-mgr. at Ottumwa.

Joe and Nick Misky planning 9-hole course for Windsor, Conn., the first the community has had since Plymouth Meadow was taken out of service years ago . . . John Netcho, former Conn. amateur champion, now pro at new super driving range in Orange, Conn. . . . Andy Biesiad, Kenny Park pro, Hartford, Conn., is ambidextrous and gives lessons from both sides . . . Willie Mason, new assistant pro at Wampanoag (Conn.) CC . . . Mason's boss is Bob Kay.

Wallington (Conn.) CC completing five new greens . . . Roy Hunter, veteran pro, clubmaker and manufacturers' sales rep, is taking over as pro at new Villa Olivia CC in Elgin, Ill. . . . Chet Warner named head pro at Riverside CC, Lake Jackson, Tex. . . . He's using films one night a month to supplement instruction given members . . . When Champions GC (Houston) membership reaches 775, club will be closed and another 18 holes built . . . Sam Schneider goes from River Oaks, Houston to Oak Boume CC, Lafayette, La., as pro.

"IN THE SPRING" . . .

**IT'S TIME TO
THINK ABOUT
GRASS SEED!**

Davis Grass Seed will help you establish and maintain a better wear resistant turf. We offer only seed of the highest purity and germination. Our prices are right.

**IMMEDIATE
SHIPMENT
FROM
LARGE
STOCKS**

George A. Davis Inc.
5440 Northwest Highway, Chicago 30, Illinois

*Southern
Courses*

new discovery!

LINCK'S TAT-42

**Kills weeds *before* they grow in
Bermuda or St. Augustine turf**

This remarkable new pre-emergence control destroys germinating seeds of weedy grasses and broadleaf weeds. Selective, can't harm turf. One application continues effective on greens or fairway for 3 months, or *more*.

Whether your St. Augustine or Bermuda turf is established or newly sprigged, TAT-42 permits luxurious, thick-knit growth without weed competition for months. Easily applied by sprayer. On Bermuda turf, if weeds have already emerged, destroy them with DI-MET PLUS 2. Then apply TAT-42 to kill late germinating seeds in the soil. Use TAT-42

after top dressing to prevent new weed contamination. Use it after stripping nurseries.

KILLS Crowsfoot (silver crab), Crabgrass, Dallis Grass, Pursley, Ragweed, Goosegrass, Knotweed, Witchgrass, Chickweed, Spurge, emerged Poa annua, and many others. Speeds elimination of overseeded rye during transition period in Spring. Does not interfere with germination of newly seeded rye the following Fall.

If your supplier doesn't have TAT-42 yet, write immediately for full information and prices.

*Northern
Courses*

DI-MET P.C.C.

Pre-emergence

Crabgrass Control

KILLS CRABGRASS *before* it grows!

Destroys Crabgrass Seeds in The Soil

Applied before crabgrass seeds germinate, DI-MET P.C.C. does a thorough, selective job. Long-lasting residual action continues effective for years. Needs only a "booster shot" of 3 to 4 lbs. per 1,000 sq. ft. annually after the first year's treatment to maintain turf that's almost 100% free of crabgrass. Besides crabgrass,

it kills chickweed, grubproofs, controls poa annua.

Based on principles developed over 7 years by Dr. W. H. Daniel, noted turf specialist from Purdue University. Brought to you by a manufacturer with over 25 years' know-how in turf maintenance.

Call your supplier today, or write

O. E. LINCK CO., Inc.
Clifton, N. J.

A NEW Approach to CRABGRASS Control



Low-Cost Treatment Lasts for Years STOPS CRABGRASS BEFORE IT GROWS!

- No mixing, no spraying . . . easy to apply with fertilizer spreader.
- Also controls Poa annua, chick-weed and certain turf insects.
- Use spring, fall or winter.

CHIPMAN CHEMICAL CO.

Dept. G, Bound Brook, New Jersey

Write for
Free Sample
and Bulletin

Selva Marina CC, Jacksonville, Fla., opened last Labor Day, planning to start construction on \$450,000 clubhouse soon . . . Mount Dora (Fla.) GC starts building second 9 which will be ready in Sept. . . . Sunrise CC, Pompano Beach, to be under construction within next month or two . . . It's a semi-private designed and to be built by Frank Murray . . . Dale Andreason, pro at Palm Springs (Calif.) GC, who got Junior program going recently, was startled (for even an old pro) at response . . . Expects to have 100 "Sweet Swingers," as he calls them, out soon . . . A few kids didn't have money to buy a basket of balls on opening day so it was decided to give balls free with the lessons.

Harry Obitz starting his 13th season at Shawnee-on-Dela., Pa. . . . Shawnee's season will be officially opened with big Dogwood Invitation, Apr. 29-May 3 . . . Ed Livingston, pro at Minnehaha CC, Sioux Falls, S. D., named supervisor of football and basketball officials for North Central Intercollegiate Athletic Conference . . . Leo Callahan, pro at Stadium GC, Schenectady, N. Y. in 1958, is taking on added job of mgr. this year . . . In addition he coaches the Siena College golf team.

Tailor made for Grass-Turf Specialists!

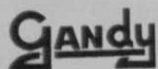


If building and maintaining high-quality grass-turf is your business . . . These machines are for you. Precision built for accurate application of all grass seeds, fertilizers and granular chemicals.

Multi Purpose SPREADER-SEEDERS GRASS TURF SPECIAL

GRASS TURF SPECIAL
(shown above) Built in 8 and 10 ft. widths, has more than twice as many openings in hopper bottom as agricultural models. Spreads seeds and fertilizers in solid sheet instead of ribbons...eliminates grass burns.

Write for complete information



GANDY COMPANY 122 GANDRUD ST.
OWATONNA, MINN.



3, 4, and 5 Ft. Hand Models (above) with 1½, 2 and 3 bushel capacity hoppers. Special Model 604 N.S. for sowing seeds in nursery frames. Draw bar pole with tractor hitch available for all models.



Versatile Cub Lo-Boy

is available with your preferred type of mowing equipment: Hammer Knife, rotary, reel, and cutter bar mowers.

Mower: Molt Hammer

Control small-job costs!

Costs increase every year on those smaller jobs now using expensive hand methods and walk-behind equipment. A versatile Cub® Lo-Boy® can cut those job costs appreciably.

Here's why: Initial cost is low, saving you hundreds of dollars compared with larger rigs. Operating cost is negligible—you measure fuel consumption in quarts instead of gallons, per hour.

This full-fledged, man-sized tractor and a wide line of available equipment can groom clubhouse grounds . . . mow roughs . . . perform scores of jobs more economically, let you keep larger tractors more productively busy on fairways.



Mower: 7

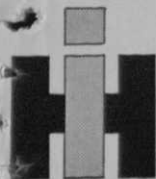
For fairway mowing, here's the new, low-cost International 240 Utility with 38.5 engine hp to deliver top economy in 5 or 7-gang mowing. Handles an 11 cu ft bucket with front-end loader.

Call your nearby IH dealer today—arrange for a demonstration of the Cub Lo-Boy, 240 Utility, or the 45 engine hp International 340 Utility. For copies of new Cub Lo-Boy and International tractor catalog, write International Harvester Company, Dept. G-4, Box 7333, Chicago 80, Illinois.

See Your

INTERNATIONAL HARVESTER Dealer

International Harvester Products pay for themselves in use—Farm Tractors and Equipment . . . Twine . . . Commercial Wheel Tractors . . . Motor Trucks . . . Construction Equipment—General Office, Chicago 1, Illinois



"I've progressed in this business with **AGRICO**[®]

Says Robert J. Mucciarone,
Supt., Merrimack Valley Country Club,
Methuen, Mass.



"As I have progressed in this business I've relied on Agrico products through the years with outstanding results always. In recent years I have used a lot of Agrico on my greens, applied basically with a proportioner, and I have my greens in excellent condition. Color, root growth and growth of turf are tops throughout my course.

"For two seasons now I've used AGRICO FOR TURF 10-6-4, and this grade far surpasses any fertilizer I've tried to date.

"As I have changed clubs in my capacity of superintendent, each time improving myself, I have always been sure to continue with Agrico products at each course."

Mr. Mucciarone's "success story" is typical of many in our files . . . Agrico follows the top golf course superintendents wherever they go!

See your regular supplier or write The
American Agricultural Chemical Co., 100
Church St., New York 7, N. Y.

AGRICO[®]

America's Premier Golf Course Fertilizers

AGRINITE[®]

the Better Natural Organic Fertilizer

There have been 17 golf courses built in metropolitan Houston area since 1946, 13 of these since 1952, according to Ken Casson of Watson Distributing Co., Houston . . . 18-hole Highland Hills CC in Springerville, Ariz., to be built to plans of Arthur J. (Jack) Snyder, Pinetop course architect . . . Jack Redmond, veteran trick shot star, making another world cruise . . . This time he's on 111 day trip of Holland-America line's Statendam.

Bert Frazer is pres., Osceola G&CC, Kissimmee, Fla., now being built . . . Michael J. O'Grady, supt., CC of New Bedford, Mass., starred as toastmaster of U. of Mass. Turf Conference Banquet . . . Mike says private golf club initiation fees and dues in New England section have gone up less than in any other part of the country . . . Only, the same can be said of salaries of supts. in that area.

Miller Brewing Co., Milwaukee and Reynolds Metal Co., to again sponsor TV All-Star golf in 1959-60 . . . Sid Goltz-Pete DeMet combination will again produce the matches and Ray O'Brien will continue as tournament director . . . Women's Open for 1961 to be played at Baltusrol GC, Springfield, N. J., the 10th USGA championship to be held there . . . New Jersey State GA enlarges 1959 tournament schedule by adding state Senior and pre-Senior championships and a third sectional qualifying round for amateurs.

USGA Open competitors at Winged Foot's west course will be shooting at a record 65, June 11-13 . . . It was made by Jug McSpaden in the 1946 Palm Beach Round Robin . . . Willie Carter, Winged Foot caddie, teaches golf at Warwick Training school in Orange County, N. Y. . . . They say he's good enough to qualify for the Open . . . Somerset County (N. J.) public course construction to start May 1 . . . It will have 18 regulation holes, driving range, clubhouse, winter sports facility, all at cost of about \$350,000, including land.

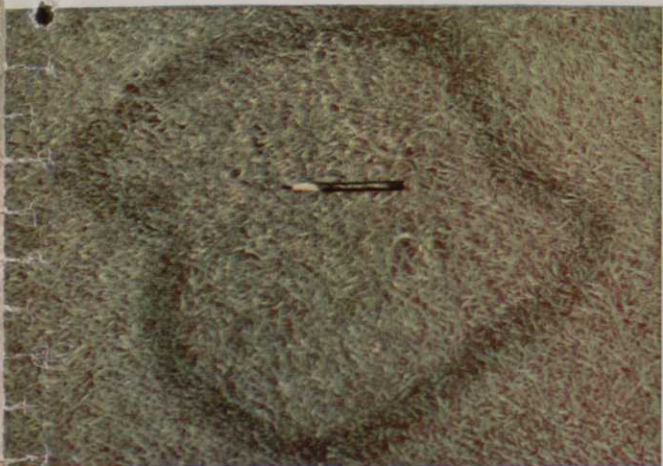
Art Marks named pro at Rock Springs GC, West Orange, N. J., succeeding Jack Semple, who has retired . . . Doug Sanderson, former assistant at Canoe Brook CC, Summit, N. J., succeeds Marks . . . Tam O'Shanter CC, Niles, Ill., reports that in 1958 it allowed two foursomes to play before frost was out of the ground . . . Players managed to chew up quite a bit of fairway and even the greens . . . When their hacking marks became quite visible later in the summer, they did the most complaining about the way in which the



COPPER SPOT

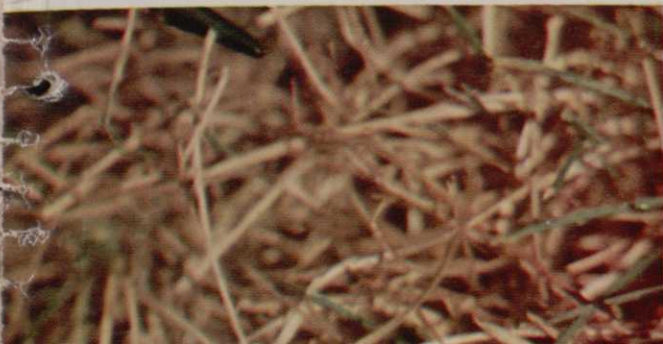


HELMINTHOSPORIUM



BROWN PATCH ▲

▼ RED THREAD



DOLLAR SPOT

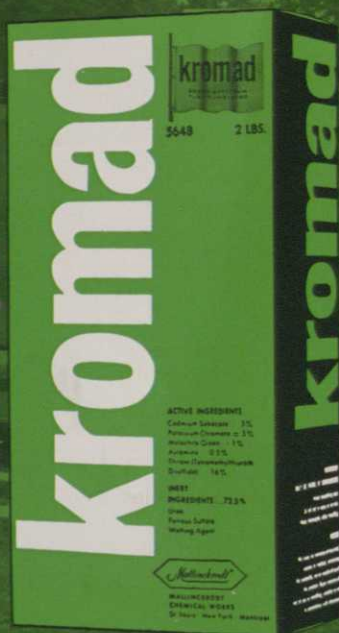


STOP 5
MAJOR
TURF
DISEASES
WITH 1
FUNGICIDE...

BROAD-SPECTRUM
kromad®



proved
over
3
years



ON
THOUSANDS
OF
GOLF
COURSES

ORDER YOUR KROMAD NOW!

If you aren't one of the thousands of superintendents who have already proved the benefits of a preventive program with KROMAD, the original broad-spectrum fungicide, don't delay any longer...see these benefits on your greens now.

PREVENTS FIVE MAJOR DISEASES

Spring, summer and fall...thousands of golf course superintendents now depend on KROMAD. Dollar spot, copper spot, red thread, brown patch or leaf blights such as those incited by *Helminthosporium* and *Curvularia*...KROMAD stops them all.

Call your **MALLINCKRODT DISTRIBUTOR** today for prompt service on KROMAD and other turf supplies.

EASY TO USE—SAFE FOR TURF

KROMAD is available in 25-pound drums and handy 2-pound boxes. Under normal conditions apply 2 oz. per 1,000 sq. ft. every 5 to 7 days. During severe disease weather, you may use 4 to 6 oz. per 1,000 sq. ft. KROMAD won't harm the finest turf! You save spraying time and labor costs, too.

SPRAY APRONS, TOO...

It makes good sense to keep disease **away** from your greens.

Mallinckrodt®

MALLINCKRODT CHEMICAL WORKS

Mallinckrodt St., St. Louis 7, Mo. • 72 Gold St., New York 8, N.Y.
CHICAGO • CINCINNATI • CLEVELAND • DETROIT • LOS ANGELES
PHILADELPHIA • SAN FRANCISCO
In Canada: MALLINCKRODT CHEMICAL WORKS LIMITED—MONTREAL • TORONTO

course was being maintained.

P. L. Pepper, El Dorado (Kans.) CC pro-supt., now carrying on research study of soil alkalinity . . . First Panhandle Regional Turf Assn. meeting set for May 12 at Hunsley's GC, Canyon, Tex. . . . George Aulbach, pro at Lufkin CC and 1958 Texas "PGA pro of the year," is a regional director of the Texas Turfgrass Assn. . . . He has supervised course maintenance for 35 years . . . To top it off, he teaches pro shop merchandising at the PGA Business School in Dunedin when the assistants come down for indoctrination.

At Titleholders in March, Miss Carol Mann (13 letters) had a 13 on No. 13 on Friday the 13th . . . Her playing partner's caddie's number was 13 . . . Jacksonville Beach (Fla.) building 18-hole municipal on property originally intended for an airport . . . First 9 to be ready in August . . . Opening of Pine Ridge Municipal brings Baltimore's number of public holes of golf to 81 . . . Miami, Hollywood, Ft. Walton Beach and Kissimmee, all in Florida, planning many courses.

Osceola (Fla.) GC, a municipal course, enlarging greens, adding water system and remodelling pro shop and lounge . . . Dick Metz resigns as pro at Shady Oaks CC in Ft. Worth . . . West Palm Beach (Fla.) CC, a municipal operation at which 70,000 rounds were played last year, has spent \$160,000 in improvements since 1949, all of which has come from green fees.

Par 3 Belvedere GC in West Palm Beach, opened in Dec., getting big play . . . Nine of its holes are lighted as is driving range . . . Regulation course to be built around "Golfland," a Par 3 in Greenville, S. C. . . . It should be ready in Sept. . . . From 700 to 1,000 persons play the Par 3 at Florida State College, Tallahassee, each week, according to W. T. Odeneal, golf coach . . . College is now planning 18-hole regulation course . . . Georgia State Teachers College, Statesboro, building 9-hole Par 3 adjacent to campus.

U. S. Marine Corps Supply Center, Albany, Ga., has its new 9-hole course in play . . . Andrews AFB, Camp Spring, Md., adding 9 holes to its present 18 . . . Chattahoochee GC now under construction at Gainesville, Ga. . . . Rio Pinar CC, Orlando, Fla., 18-hole regulation and 9-hole Par 3 now in play . . . Mark Mahannah designed them and Ernest Edwards is pro . . . Indian Lakes Estates, Lake Wales, Fla., has opened first 9 of projected 36.

High Nitrogen Builds Turf...



12-6-6 . . . the Wonder Gro plant

food formula for rich, dark green grass that stands up under heavy traffic on fairways and tees. *High in Nitrogen* to stimulate growth—plus generous amounts of other basic elements for steady strength.

IT'S GRANULATED . . . spreads evenly from standard equipment. Longer feeding at the roots. Dustless, odorless, clean. Will not burn. Made to the analysis recommended by Michigan, Indiana, and Ohio State Universities.

WRITE FOR FREE LITERATURE on research results on Wonder Gro, plus name of local distributor.

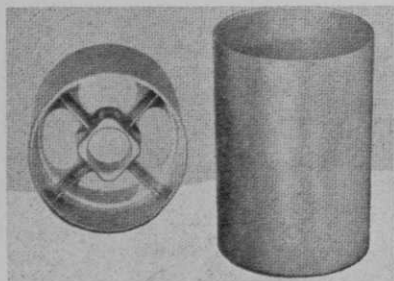
NURISH . . . water soluble plant food . . . gives new lift to tired greens during summer slumps.



Progress Through Chemistry

DAVISON CHEMICAL COMPANY
Lansing, Michigan

TRU-CIZE HOLE CUP



TRU-CIZE HOLE CUPS Are Best Because:

1. Made by the new "Precise Die Cast" method, accurate to a few thousandths/inch. 2. Made of 99% pure zinc — rust proof. 3. 25% lighter than cast iron cups, with three times the tensile strength of cast iron. 4. Years of use on hundreds of golf courses have proven their superiority. 5. They comply with USGA Rules and Measurements. Cup tapered 1/8 in. 6. Built with particular attention to high quality; stronger pole sockets; drainage and smoothness, inside and out.

Write us for name of your nearest dealer.

Manufactured By:

GOLF & TRACTOR EQUIPMENT CORP.

P. O. Box 55, Elmwood Station, Syracuse 7, N. Y.

Jimmy Lentz, pro-owner of a range at Bradenton, Fla., putting \$25,000 into new shop and improvements . . . He formerly was at Minot (N. D.) CC . . . Abe Arnowitz, starting his 19th year as pro at Flagler Hotel & CC, South Fallsburg, N. Y., will be working in a new pro shop . . . Fred Bowman, pres. of Wilson Sportings Goods Co., recuperating at home after undergoing surgery in February . . . Ft. Belvoir (Va.) GC finally decided on a civilian supt. for its course and hired Tom Dorer, secy-treas. of the Mid Atlantic GCSA, to handle the job.

John Burt now at Beaver Creek CC, Hagerstown, Md. as supt. . . . He moved from Cedar Point GC, Patuxent NAS . . . George Gumm returns to Ocean City G & YC after two years as supt. at West Chester (Pa.) CC . . . Green Farms Golf & Ice Rink, Westport, Conn., opening this month . . . It has driving range, 18-hole miniature and clubhouse.

Jimmy Demaret and Jackie Burke claim that Martin Flick, head lockerroom man at their Champions GC, Dallas, has world's greatest memory for faces and names . . . Montgomery, one of Maryland's wealthy counties, makes a tax adjustment with its



BENT GRASS STOLONS



for the finest greens in the country

Arlington C-1 and Congressional C-19 from the lush Litchfield Hills

Vigorous selected stolons, grown and nurtured under the most careful supervision. These stolons are of the finest quality, developed under the direction of the nation's leading turf agronomist. For uniformity, smoothness, easy maintenance, they are, without doubt, the finest stolons you can obtain. Write, phone, or visit us for details.

Sold in Stolon, mixed or pure strain.

R.F.D. NEW PRESTON, CONN.
PHONE: NEW MILFORD Elgin 4-6046

for the grass you love to putt . . .

KENT HOLLOW FARMS