

AMERICA'S FINEST GOLF PRACTICE NET

made with United States Rubber Company's shock absorbent ENSOLITE

—a tough expanded cellular plastic pad sewed to heavy duck and designed to withstand the terrific impact of high velocity drives. Prevents ball rebound.

- Easy to set up—INSIDE OR OUTSIDE
- Back drop 8' wide 9' high
- Ensolite pad 4' x 6'
- Side nets 8' x 9' \$98.00 F.O.B. Factory
- 8'x9' back drop and Ensolite Pad, without side nets \$69.50 F.O.B.

Please enclose check, money order or purchase order.

SOUTH BEND PRODUCTS SALES

1422½ Mishawaka Ave. South Bend, Indiana



Leading Country Clubs
Use South Bend Golf Practice Nets

1958 Golfdom Editorial Index

Assistants' Department

Smart Young Pros Justify PGA School Operation	Herb Graffis	Feb. 28
Schedule Third PGA Assistant's School for January		July 38

Book Reviews

How to Think and Swing Like a Champion	Dick Mayer	May 48
U. S. Golfer's Annual Handbook		May 48
The Management of Clubs	Harry J. Fawcett	May 48
Better Golf Through Better Practice	Jules Platte & Herb Graffis	July 60

Club Operation

Congressional Adopts New Membership Plan		Jan. 24
Metropolitan Club Survey is Comprehensive Report		Feb. 38
You Shouldn't Be Without A Pool	Henry Holl	Apr. 39
Walpole Survey Brings Members Into Act		Apr. 76
North Olmsted — Model of 9-Hole Operation		May 32
9 Club Activities Covered in Chicago District Report		June 30
Discuss Superintendent's Value to Club		July 29
Horwath Gives Breakdown on Club Operation Costs		Sept. 49

Conventions & Conferences

GCSA Set to Move on Washington		Jan. 38
90 Supts. Attend Midwest Clinic		Jan. 46
Central Plains Holds 3-Day Meet		Jan. 46
CMAA St. Louis Conference Program Completed		Feb. 62
New Attendance Record for GCSA at Washington Convention	Joe E. Doan	Mar. 37
Chaney Elected Head of CMAA		Mar. 110
200 Attend RCGA Turf Conference		Apr. 44
Iowa State Holds 24th Short Course		Apr. 44
Chickasaw Host to Southern Supts.		Apr. 44
534 at Purdue Conference		Apr. 46
Attendance at Penn State High		Apr. 46
Florida Turf Meeting		Oct. 48
Midwest Field Days		Oct. 50
Ohio Turf Conference		Oct. 104

Construction

Total Budget Costs in Club Construction	Geoffrey S. Cornish	Apr. 80
Architect Calls for Re-Examination of Course Construction	Charles B. Schaestock	Sept. 19
Tax Repeal Will Boom Course Building		Oct. 36

General

International Comes Into Own in Japanese Matches		Jan. 34
Golf Day 1957 Net Is \$56,421		Jan. 51
1957 Golf Club Sales Show Two Per Cent Increase		Feb. 30

1914 **FULNAME** 1958
Original Ball Marker

The rolling die does it!

3 TYPE SIZES

Small — Medium — Large

Box 178

Cincinnati 6, Ohio

Madison Educates Its Young Golfers		Feb. 60
Golf Is Big Business in Los Angeles	Verne Wickham	Mar. 66
2,738,162 Doz. Balls Sold in '57	Herb Graffis	Mar. 90
Golf for 8 Million High School Kids		May 52
Foundation Gives Optimistic Report on Course Growth		May 60
Athletic Goods Census for 1957	Herb Graffis	June 27
Golf Goes Up the Mountain at Grand Marais	Bill Sherman	June 60
Rock Island's Golf Lodge		June 70
Big Dreams, Small Capital Bring Course to Barboursville	Den Hatfield	June 76
Water! It's Feast or Famine on Courses in West	Omer Crane	July 48
L. S. Dickinson, Turf School Founder, Retires		Sept. 45
Future Masters		Sept. 54
Manufacturers Happy With '58		Oct. 33

Golf Law

Court Rules Club Is Non-Profit Corp.	William Jabine	Mar. 104
California Court Says Club, Not Player, is Caddy's Employer	William Jabine	Apr. 70
Golfer Denied Relief When Hit by Member of His Foursome	William Jabine	May 36
Court Rules Course Creek Is Not Attractive Nuisance	William Jabine	June 40
Golfer Not Guilty of Negligence on Freak Shot	William Jabine	July 50

Golf Cars

How About Golf Cars?	George Nivel	Mar. 51
Golfdom's GoM Car Survey		Mar. 52-53
Golf Cars Go Under Cover		Oct. 80

KEN Shop Supplies

Help You Give Better Service



ALUMINUM SANDING CONE

A real time saver in any Pro shop; enables you to turn out real professional quality work. Very useful in removing old finish from wood heads and sanding new wood heads before finishing. Made entirely of metal; lasts a lifetime.

Other Useful KEN Shop Supplies

All Ellingham Tools; Grip Conditioner; Stains, Lacquers, Adhesives; Golf Club Scales—Official, Lorythmic and Prorythmic; Grips, Listing, Whipping; Shafts, Collars, Plugs, Sheathing; Buffing and Cleaning supplies; All other shop needs.

Write for handy SHOP SUPPLY LIST

Kenneth Smith

GOLF CLUBS *Hand made to fit You*

BOX 41-GM, KANSAS CITY 41, MO.

World's Largest Custom Club Maker

LUCKY 711

'the best golf glove ever produced'



Designed and tested by Freddie Haas

'Sanvilized'® using Dupont 'Quilon'

- Only glove available in Regular, Slim, Cadet models to fit all hands.
- Washable • All Colors
- 'Air Conditioned'
- Water Repellant
- Snap back for easy put on, take off

Representatives wanted for complete line of gloves, club covers.

SANVILLE GLOVES, Inc.

JOHNSTOWN, N. Y.

Professional

Sargent Is New PGA Head	Herb Graffia	Jan. 21
PGA Teaching, Merchandising Sessions		Jan. 28
Summary of Speech by Dick Mayer		26
Olin Dutra		27
E. W. Elliott		30
Rinaldo Spagnoletti		30
Paul Runyan		32
Paul Hahn		32
Aycock's Record Distinguished by Great Accomplishments		Jan. 33
Come Rain or Shine — Pros Plan to be Ready		Feb. 23
Philadelphia Section Sponsors Spring Show		Feb. 24
USGA Says Pros Can't Split Open Prizes		Feb. 35
Keep Shop Simple, Uncoltered	Al Robbins	Feb. 46
Buying, Taxes, Public Relations in Pro Operation		Feb. 48
Summary of Speech by Stephen C. Bilheimer		48
Shirley Spork		48
Bob Walcott, Jr.		52
Kenneth Lake		53
Dale Anderson		78
Frequent Display Changes Boost Apple Valley Sales		Feb. 53
How Urzetta Makes Every Merchandise Shot Count		Mar. 46
Things Pro Should Know About Bank Credit	W. V. Register	Mar. 50
More Lessons from Long Beach		Mar. 50
Summary of Speech by Ted Daxter		59
Guy Bellitt		60
Paul Sprinz		62
Danger in Guessing Pro Revenue	Herb Graffia	Mar. 72
Five Impressions That Bring Pro Sales	George Aubach	Mar. 107
Good Public Relations Job Vital in Pro Success	Eddie Duino	Apr. 35
Wants Practical College Training for Pros	George Dawson	Apr. 42
Gloom Out-Dollars in At Revolta Shop	Herb Graffia	Apr. 50
May Decision \$210,000 Blow to Pros		Apr. 84
British Pro Studies Swing, Then Makes Sales		Apr. 88
Need Large Stock for Public Course Operation	Chuch Curtis	May 20
Correct Display Sells Golf Shoes	Al Robbins	May 30
Warns of Returned Goods Danger to Pro Business		May 38
Candill Makes Career of Pro Merchandising		May 46
Strictly Professional—Hints for the Pro		June 32
Pro Shop Must Be Advertised	Don Perne	June 38
Carman Gets Fast Start at Buena Vista		June 58
Dennison Gives Variety, Gets Volume		July 34
Two Week Limit on Holding Trade-In Clubs	Jackson Bradley	July 42
PGA Pros Help Run Seminar for Graduate Students		July 44
Strictly Professional — Hints for the Pro		July 52
Common Sense of Pro Shop Selling (Part I)	George Aubach	Aug. 25
Runyan and His Two Specialists	Chuch Curtis	Aug. 29
Sell Yourself — Sell Your Product		Aug. 38
Why I Help to Put Over High School Programs	Ralph Krueger	Aug. 48
How to Step Up Shop Sales to Women	Mrs. Joe Moore, Jr.	Sept. 22
Harry Chitz — Perpetual Man in Motion		Sept. 34
Many Pros Work to Extend Length of Season		Sept. 38
Common Sense of Pro Shop Selling (Part II)	George Aubach	Sept. 44
Push Yet to Come in Women's Sales		Oct. 40
Hunter & Hunter Have Merchandising Knack	Bill Sherman	Oct. 62
Pro Merchandising	Dick Tarlow	Oct. 68

Turf Management

1957 Turf Roundup	O. J. Noer & Fred Grau	Jan. 46
Discuss Course Cost Cutting at Green Section Meeting		Feb. 26
Bent Greens in Nashville	O. J. Noer	Feb. 32
Work Goes Smoothly in Roomy Equipment Building	Clyde Young	Feb. 34
Grau's Answers	Fred V. Grau	Feb. 44
Turf Management Literature	Fred V. Grau	Feb. 64
Grau's Answers	Fred V. Grau	Mar. 54
What They Told Supts. at Washington		Apr. 56
Summary of Speech by Merrill Whittlesey		56
Ralph E. Engel		58
O. R. Lunt		58
Tom Mascaro		60
H. B. Couch		64
J. R. Watson, Jr.		64
Grau's Answers — Lawn Clinics	Fred V. Grau	Apr. 74
Fertilizer Programs, Management Practices Investigated in Survey		May 23
GCSA Convention Speeches		May 40
Summary of Speech by Leopold V. Freudberg		40
James M. Latham		40
J. A. DeFrance		79
Roy W. Nelson		83

How Flynn Gives Greens Quick Spray	O. J. Neer	June 34
How We Saved the Turf at North Hamstead	Joe Sylvester	June 46
Grau's Answers — Don't Drown the Grass	Fred V. Grau	June 50
Gibberellin Acid Shows Promise as Turf Regulator	Felix V. Juska	June 64
How Chlorotic Grass Responded to Iron Sulphate	O. J. Neer	July 40
Grau's Answers — Keeping Out of the Way	Fred V. Grau	July 54
Golf Course Irrigation (Part I)	C. E. (Scotty) Stewart	Aug. 27
Pollock Prevailed in Spite of Rain, Heat, Humidity		Aug. 32
Grau's Answers — Practice Vs. Proved Principles	Fred V. Grau	Aug. 44
Protection for Drivers	O. J. Neer	Sept. 24
Golf Course Irrigation (Part II)	C. E. (Scotty) Stewart	Sept. 28
Grau's Answers — Test Nurseries	Fred V. Grau	Sept. 48
Unlimited Budget: Supt's Dream	Noer & Grau	Oct. 44
Turf Roundup for 1958	Noer & Grau	Oct. 54-55
Golf Course Irrigation (Part III)	C. E. (Scotty) Stewart	Oct. 74

Oak Hills Puts Suggested Improvements Into Force

In order to improve general club service, Oak Hill CC, San Antonio, Tex., recently polled its membership to find out how this could be done. As a result of suggestions received through the survey, the following changes, the first of several that will be put into force, have been made:

A direct telephone line to the 19th hole was installed. Complaints about the telephone service at the club had been numerous, particularly on after-office-hour calls and calls made to the 19th hole.

Service at the 19th hole was improved by hiring more help during peak periods.

Parking was improved through new curb markings and signs.

Supervision at No. 1 and No. 10 tees has been improved.

In the estimation of many authorities in the club management field, improvement of services and facilities at clubs has lagged behind maintenance of the course and pro shop service. Probably this is because many details of good service are neglected because they are considered inconsequential. As the Oak Hills and other surveys show, members are quite concerned with the way in which the simple, everyday routine is handled.

"If you are not on our mailing list, you miss valuable reference information on Golf & Grounds upkeep", says Clinton KENT Bradley, Box 2, Wayne, N. J. "Just put name, address, Club & title on postcard to join."

Adv.



* RIPPLE[®] Sole Golf Shoes



PRO-SHU by
Howard & Foster Co., Inc.

Well, the Pro's lessons helped, too. But it's amazing what a difference RIPPLE[®] Soles will make in your game. Springy rubber "cushions" propel you forward with a lighter step, take the load off leg muscles, give you heel-to-toe balance for crisp, clean shots.

From car to clubhouse to course, no need to change when you wear RIPPLE[®] Sole golf shoes, either!

Ask your Pro about them . . .
or write for FREE folder
of smart RIPPLE[®] Sole styles

*TM — RIPPLE SOLE CORP.

RIPPLE SOLE CORPORATION
537 Mutual Building
Detroit 26, Mich.

LET SAM SNEAD
HELP YOU SELL

MAGIC

PAT. APP. FOR

TARGET-TEE*

OF LIFETIME NYLON

- The greatest stroke-saving golf tee ever designed
- Endorsed by SAM SNEAD in national advertising
- Sells itself from FREE compact counter display dispenser
- 48 pkgs. of tees pre-ticketed at 39¢ pkg.
- Your investment — \$11 your profit \$7.72
- Postpaid — anywhere in U.S.A.

*Reg.



Mfd. by **TARGET TEE CO.**

2432 Hollywood Blvd., Hollywood, Fla.

1959 Amputee Tournament

The 1959 National Amputee golf tournament will be played at Savannah (Ga.) GC, Aug. 28-29, according to an announcement by Ralph Demopoulos, pres. of the sponsoring Savannah Golfers Assn. About 150 players are expected to take part in the tournament. The course is 6,105 yards long and par is 72. Earlier this year it was the site of the Amputee Southern Region tourney, won by Wally Baskovich, Clearwater, Fla., who finished as runnerup in the 1957 national.

Golf Holds Price Line

Figures developed by the National Golf Foundation and printed in a recent fact sheet, "Golf Beat," show that on a comparative basis it is cheaper to play golf today than it was 25 years ago. In 1932, people had to work 2.7 hours to earn enough money to pay weekday green fees as compared to 1.2 hours today. Weekend green fees in 1932 required 4.5 hours of work as compared to 1.7 hours today. The Foundation also points out that people today not only have more time to play but that there are more than five semi-private courses now being operated for every two in 1932.

Toro Manufacturing Introduces "Wind-Tunnel" Mower



"Wind-tunnel" mower is the way the 19-inch Toro Whirwind rotary power mower is described. Incorporating a full-circle expanding wind tunnel, said to be the most significant advance in mowers since rotarys, the machine creates a power vacuum that "freezes" grass blades upright for crisp cutting. Compressed air blows clippings and leaves through spiral chamber into a bagging attachment. Even wet grass is said to mow easily with no clogging. Chute and leaf mulcher, standard attachments, enable the Whirwind to give three-season service: spring and fall cleaning, cutting and bagging, full mulching. The discharge chute, of tough Marlex high-density polyethylene, resists abrasion and absorbs shock of vacuumed material. The one-inch crankshaft, one of the shortest in any rotary on the market, is said to be up to 300 per cent stronger than other crankshafts.

Name the Grip Competition

Pros and consumers will have the opportunity to win a trip for two to the 1960 Masters, U. S. Open or PGA Championship by naming the



newest Goodwin grip. Both the pro who sells it and the consumer who buys it and names it will win. Information regarding this contest will be available at every shop in the country. The contest will cover both replacement and new club grips.

This newly designed all black grip has tiny beads of live rubber on the surface and is said to



give positive left hand control. It helps generate more power off the tee. The "Corker" answers the demand for an all weather grip. The cork particles are embedded in a special rubber compound in such a manner that, coupled with the patented design, it permits equally good play in hot, cold, fair or wet weather.

Lewis Line

Improved Tee Ensemble

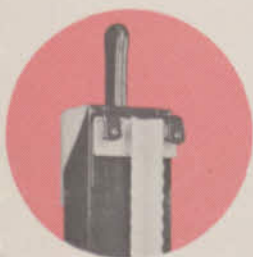
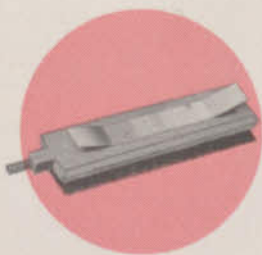
- always tops in service
- now better than ever
- check these added features

NEW COATING OUTSIDE . . . in an attractive design to dress up your course,

NEW COATING INSIDE . . . eliminates corrosion for long service.

NEW NYLON BRUSH

(Interchangeable in all new style washers) . . . is now available for use in Lewis Line Golf Ball Washers in addition to the regular bristle brush. The new Nylon Brush has been tested to 1 MILLION strokes of the paddle without a sign of wear. The Lewis Washer gives vigorous, deep-cleaning action without messy exterior splash.



NEW TAMPER-PROOF SCREWS . . . to help prevent theft and vandalism are now supplied by Lewis for attachment of washer to the sturdy, steel tee stake. Removable for winter storage.

The Lewis Tee Ensemble also includes attractive chrome data plates for at-a-glance information on hole, number, yardage and par . . . tee towels for convenience of your golfers . . . and waste container for neater fairways. Removable for quick emptying.

CONTAINER DEVELOPMENT CORP.

415 Monroe Street - Watertown, Wisconsin



Lewis Line

Fiberglass Flagpole

- flexible
- lightweight
- non-corroding
- last for years
- low maintenance

The NEW Lewis Line Flagpole won't rot or corrode. It's made of powerful Fiberglass reinforced polyester. Year after year, it will withstand the severest weather conditions.

Precious, well-cared-for greens get gentle treatment with these feather-light Lewis Flagpoles. The poles are available in 5, 7 and 8 ft. lengths, equipped with an all steel Ferrule and all-tite Swivel. Available in permanently molded-in white only and striped with a tough red epoxy plastic coating.

CONTAINER DEVELOPMENT CORP.

415 Monroe St.

Watertown, Wisconsin

H & B's 1959 Power Bilt Line

Hillierich and Bradby's 1959 line of Power Bilt clubs includes the features described below:

Citation Wood—Brass back-weighted medium size head finished in dark wine. Air-dried persimmon is used exclusively. Driver is available in deep or medium-shallow face. Fairway woods have medium-shallow faces. Shaft is True Temper's Pro-Fit in A, R or S flex. Buyer has choice of Cushionform leather or cork and rubber rib-guide grips.



Citation Iron — Blade is updated version of Scotch type blade, shallow at heel, deep at toe. In stainless steel it won't rust or corrode. Back is power-weighted with two-tone bright and sand-blast face. True Temper Pro-Fit shaft in A, R or S pattern. Choice of chrome-tex leather Cushionform or white Victory Golf Pride rib lock grip.



Several Innovations in New Atwood-Terra Golf Car

Meisel Distributing Co., 2207 Big Bend Blvd., St. Louis 17, Mo., is marketing a new golf car with features that it claims are revolutionary.



Called the Atwood Terra-Car, it has Goodyear's latest innovation that is said to spread the weight of the tires over such a large area that damage, even to turf too soft to walk on, is eliminated. Powered by a 9 hp Briggs & Stratton air cooled, 4-cycle gas engine, the Atwood Terra gets 36 holes to a gal. at from 1 to 10 mph. It has rear-

New! Improved

WESTALL
RUBBER FLOORING

Lower Priced!

You get years of dependable service when you install our smooth surface rubber flooring! Choice of red, green or tan colors. Write or wire for sample and further information.

- Protects Clubhouse Floors For Years!
- Longer-Wearing, Tough, Firm!
- So Smooth, Safe and Easy to Clean!
- Does Not Buckle, Stretch or Crawl!
- Comes in Rolls 24 ft. Long, 36" wide and 5/16" thick.

HENRY WESTALL COMPANY

944-960 Merrimon Ave., Asheville, N. C.

USED AERIFIERS

1 - GL Jr.	\$295.00
1 - GL Sr.	350.00
1 - GL 2 (Used once only on 18 greens.)	595.00
1 - Model "U"	350.00
1 - GRASSLAN	795.00

(All with new spoons.)

The above machines are in excellent condition. Model "U" and Grasslan have been used only as demonstrators. Offered subject to prior sale. F. G. B. Asheville, N. C.

HENRY WESTALL COMPANY

944 Merrimon Avenue
Asheville, N. C.

GET STARTED RIGHT!

...on your new

Golf Course

(regulation or par-3)

Golf Clubhouse Driving Range Miniature Course

Use the National Golf Foundation planning, building and operating aids listed below to save time, money and headaches in putting any type of golf operation into play:

Planning & Building the Course

8½ x 11 inches 32 pp. illustrated \$1

Planning the Golf Clubhouse

9 x 11 inches 96 pp. illustrated \$9

Planning the Professional's Shop

8½ x 11 inches 50 pp. illustrated \$1.50

Operating Data For Private Golf Clubs

8½ x 11 inches 12 pp. FREE

The Municipal Golf Course Organizing & Operating Guide

8½ x 11 inches 128 pp. illustrated \$3

Golf Operators Handbook

(Miniature Putting Courses, Driving Ranges, Par-3 Courses)

8½ x 11 inches 112 pp. illustrated \$3

Community Planning Gets a Golf Course

(A 22 minute, 35mm Color Sound Slidefilm, available on loan or purchase)

NATIONAL GOLF FOUNDATION

407 So. Dearborn St., Chicago 5, Ill.

wheel steering for ease and safety on hills. Weighing 825 lbs., the Atwood Terra has an Indus Transpac transmission, centrifugal clutch and natural action lever for forward and reverse. Brakes are combination hydraulic-mechanical with additional hillholder. Meisel distributors will cover the U. S. and Canada and have complete parts and service available.

California Turfgrass Grows, Distributes Old Orchard

California Turfgrass Nurseries, Box 182, RR No. 2, Camarillo, has been given a franchise by Ralph R. Bond, Madison, Wis., to grow and distribute Old Orchard C-52 bent. Tobias Grether, who has offices at 15054 Lynn av., Los Gatos, is owner and M. V. Bailey, mgr., of California Turfgrass. This company will cover Calif., Ore., Wash., Nev., Ariz., Utah, Idaho and Mont. and its proximity to the western market will result in big transportation savings for courses in the area. Old Orchard is grown from stolons and is a versatile strain that survives in all types of weather - in the extreme heat of St. Louis where temps. sometimes go to 115 F. and in the cold of Winnepeg where they fall to 30 below.

Penna Designs New Wedge

Toney Penna, MacGregor club designer, has developed a new trap wedge which he developed after extensive study of the problems average golfers have in using wedges out of sand. The club has a bit more loft than is usual with wedges, is slightly heavier at the bottom, with large flange and a larger face. Although the club was designed primarily for effective use by ordinary golfers, MacGregor tourney staff men are praising the new implement. Pro orders of this item of the 1959 MacGregor line are reported to be large.

Cad-E-Mobile Is New Electric Powered Cart

An electric powered golf bag carrier is being



Here is Wilson's leather golf bag with matching carryall, known as the Executive Set. Bag has full length 3-section club dividers plus several other features and carryall has double zipper opening and plastic lined side pocket.

For better and more economical golf ball washing

HENRY Golf Ball WASHER

• Will dress up any course • Dirty water will not splash • Heavy gauge steel • **NEW** improved insert in rubber squeegee • Oil impregnated bearings • No brushes to rot.

A. C. Schendel, Distributor

Box 92, Waukesha 5, Wisconsin

Dealers in all principal cities



**BALL
WASHER**

\$14.75

Prices F.O.B.
Waukesha, Wis.

introduced by the Cad-E-Mobile Corp., Grand Rapids, Mich. Called Cad-E-Mobile, the machine eliminates carrying clubs or pulling carts. It has two speeds, one for comfortable, walking and a second, slightly accelerated to make hill climbing easier. Cad-E-Mobile, it is said, will easily go 18 holes on a single charge. Compact in design it is easy to haul or store and is assembled without tools in a couple minutes.

Imaginative New Acoustical Tile

Armstrong Cork Co., Lancaster, Pa., has introduced four acoustical materials that are designed to give an imaginative "new look" to ceilings in places such as pro shops and clubhouses. Completely incombustible, the various patterns have these features: metallic accents, the monolithic effect or three dimensional design.

Karl Kolb is sales rep for Agriform of Calif., Woodland, distributor for Nitro-form Agricultural Chemical Co. in the northern part of California, and Howard Chadwick is sales rep for Inland Fertilizer Co., 4134 Bandini Blvd., L. A. which handles Nitro-form's so. Calif. accounts.

Berlin Chapman Co., Berlin, Wis., manufacturer of indoor driving ranges, and Consolidated Foundries & Mfg. Corp., Chicago, were recently merged. John C. Miller continues as Berlin pres. and genl. mgr. Berlin becomes a division of Consolidated.



Ford's new tractor-loader "package" has 2½ times the lift capacity of any previous Ford loader. Both tractor and loader are designed for versatile, high-production work of the most punishing kind. The new "Super-Duty" loader, has a 2500 lb. lift capacity, 5500 lb. break-away limit, and bucket sizes up to one cu. yd. The tractor can carry up to 7000 lbs. on its front axle and is designed to isolate driver and engine from shocks encountered in any kind of service. Two tractor models, the 1821 and 1841, are offered with gasoline or diesel engines.

Tell Them You Saw the Ad
in GOLFDOM

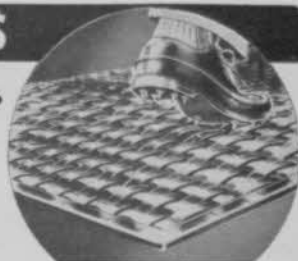
SAVE CLUB HOUSE FLOORS

WITH SPIKE-RESISTANT PNEU-MAT RUNNERS

Protect your floors from spike holes with rugged Pneu-Mat Runners. Absolutely spike-resistant, they provide a comfortable walking surface—improve the appearance of your club house.

Woven of rubber-impregnated fabric, Pneu-Mat Runners are tougher than rubber runners. Reversible for double wear.

Money Back Trial Offer: Order a trial section. Test it on an area which gets especially hard wear. Money back if not satisfied.



STANDARD WIDTHS

20" - 24" - 30"

36" - 42" - 48"

Trial Section

24" x 60"

\$12.50 postpaid

Write today for illustrated folder

SUPERIOR RUBBER MFG. CO., INC. • 145 Woodland Ave., Westwood, N. J.



Pro-Grip Wax

**PUTS POWER
IN YOUR DRIVES**
Sold Through ALL
Leading
Distributors

MANUFACTURER'S SPECIALTY CO., INC.
2736 Sidney St. ST. LOUIS 4, MO.

MILLBURN



Sterilized ready to use

John Darrah, agronomist for Millburn Peat, Inc

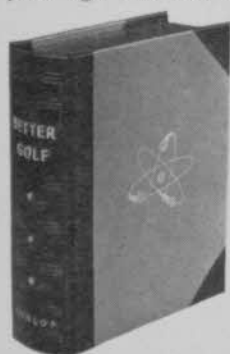
MILLBURN PEAT COMPANY

111 N. Wabash Ave., Chicago 2, Ill

Dunlop Revives Book-Pack for Xmas Gift Golf Balls

Dunlop Maxfli balls are available for Christmas, 1958, in a modernized version of the enthusiastically received book-pack of several years ago. The new edition of "Better Golf"

presents one doz. Maxflis (reds or greens) between bright red covers with black simulated



leather binding decorated with gold lettering and emblem. "Page" edges appear in gold. The balls can be ordered with a personalized name imprint (minimum order each name is one doz.).

As a service to golfers whose pro shops close in the fall, Dunlop will accept orders for personalized balls and for gift-boxed balls at Dun-

lop Tire and Rubber Corp., 500 Fifth ave., New York 36. The name of the club pro must be enclosed with the order so that he may be credited with the sale.

Bolt and Kroydon Sign For Club Line

Tommy Bolt has signed with Kroydon Golf Corp., Melrose Park, Ill. A line of clubs carrying his name will be made by Kroydon, according to Allan P. Hansberger, Kroydon vp in charge of sales. The National Open champion was with Kroydon three years ago.

Kroydon, which was sold several months ago to energetic young owners, plans to make a strong bid for pro business with men and women's clubs.

Jacobsen Promotes Two

Frederick W. Hazle has been named a field supervisor by Jacobsen Mfg. Co., Racine, Wis. His territory will include Ind., Ky., Mich., Ohio, W. Va. and part of Pa. and N. Y. In recent years he has worked as a Jacobsen service mgr. in Cuyahoga Falls, O.

Another Jacobsen appointment recently announced was that of William J. Lindsey as dist. sales mgr. for Iowa and Neb. He is making his headquarters at Ottumwa, Ia.

Monroe FOLDING BANQUET TABLES

Direct Prices and
Discounts to
Golf Clubs,
Lodges,
Parks,



Hotels,
Churches and
All Organizations

Manufactured By

WRITE FOR
CATALOG

THE Monroe COMPANY
12 CHURCH STREET COLFAX, IOWA

Kill WATER WEEDS!

Water hazards and lakes now may be cleaned of all rooted aquatic weeds. Lily, cattail, milfoil and many other aquatic weeds are easily killed with one application of R-H GRANULAR WEED RHAP. It is easily applied — will not harm fish or animals. This inexpensive application usually lasts from 18 to 36 months. Write for further information or ask your dealer.

REASOR-HILL CORPORATION

BOX 36GC, JACKSONVILLE, ARKANSAS

COLBY PIONEER PEAT

Products for building and maintaining golf greens are available in winter storage for prompt shipment.

BLACK—cultivated fine milled for top dressing.

BROWN—peat for building new greens.

GREENS—top dressing (1/3 peat - 1/3 sharp sand and 1/3 loam), or any required proportion.

QUOTATIONS on materials packed in plastic lined bags, or in bulk gladly furnished.

COLBY PIONEER PEAT CO.

P.O. Box 115

HANLONTOWN, IOWA

COUNTRY CLUB—RESORT and MUNICIPAL COURSE MANAGEMENT SPECIALISTS

Consultation Service or
Complete Course Management

National

International

DELAWARE VALLEY GOLF ASSOCIATES

6922 Rutland St., Philadelphia 49, Pa.

Fidelity 2-6974

Scorecard in MacGregor Glove Pack

Golfers who like to keep a check on their game will welcome the new MacGregor golf glove pack. The all-leather gloves come packed in season score card. The score card has a place for the date, the name of course each round is played and a space for listing par for the individual courses. Numbered from 69 to 120, golfers can indicate their scores with a dot on the appropriate spot and by connecting the dots by a line can quickly chart their progress or lack of it.



Nitro-Form Has Booklets for Superintendents, Manufacturers

Now available to supts. and others are two booklets prepared by Nitro-Form Agricultural Chemical Co., 92 Sunnyside ave., Woonsocket, R. I. They can be obtained from distributors or direct from the company. One is the "Superintendent's Turfgrass Manual" which is a guide to fertilizing, gives the range of nitrogen feeding and includes much other worthwhile information. The second booklet, "Manufacturers'

Handbook," is a technical reference book for student and teacher. Charts aid in understanding properties of quality urea-forms.

Dick Davis Gets Sales Spot with Professional Golf Co.

Jack Harkins, sales mgr. of Professional Golf Co. of America, Inc., 1233 Charter st., Chattanooga 2, Tenn., has engaged Dick Davis to represent the firm as a jobber in Ariz., Utah, Nev., New Mexico and West Texas. Davis, an outstanding golfer and native of Asheville, N. C., will push the sale of First Flight, the steel power center ball, and First Flight clubs, both of which are becoming very popular throughout the country.



Dick Davis

Scott Pamphlet Informative

O.M. Scott & Sons, Marysville, O., is distributing a pamphlet that gives an acreage and per 1,000 sq. ft. cost breakdown on quality use of its weed killer, 4-XD, Clout, Cope (for grub-worms), Turf Builder and Kansel (clover killer). It can be obtained from distributors or the company.

GOLF RANGES

MINIATURE GOLF COURSES

We Have a Complete Line
of Supplies
Write for Catalog

EASTERN GOLF CO.

Dept. A
2537 BOSTON RD.
BRONX 67, N. Y.

RYANS O.K. No. 4 SEEDER & SPREADER 4 Cu.Ft.(300 Lbs.) Capacity-3 Ft. Spread



No Holes to Clog.
Quick Shut-off Lever &
Adjusting Gauge
Screw On Handle
Spreads Top Dressing,
Nitro-Humus, Peat,
Commercial Manure
& Other Materials
Successfully
Weights Only 69 Lbs.
Write Dept. "G"

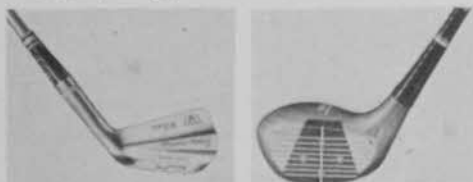
DEALERS WRITE FOR OPEN TERRITORIES
H. & R. MFG. CO., Los Angeles 34, Calif.

BOB BALDOOCK
GOLF COURSE
Architect
FRESNO, CALIFORNIA

ROBERT BRUCE HARRIS
Golf Course Architect
MEMBER AMERICAN SOCIETY OF GOLF COURSE ARCHITECTS
664 N. MICHIGAN AVENUE CHICAGO 11 - ILL.
Whitehall 4-6530



Club House Caddy, Wilson Sporting Goods Co's Christmas golf ball package, offers King's Men After Shave and Cologne with 12 Staff balls. With the 6-ball package, the After Shave is included.



Top Notch woods and Dyna-Powered irons also are recommended as perfect gifts by Wilson. Strata-Bloc woods are finished in cognac. Irons have solid sandblasted face and top line and chocolate brown calfskin grips.

Southwestern Pipe Bulletin

A three-page engineering data bulletin dealing with a new plastic piping material known as Type II ABS has been released by Southwestern Plastic Pipe Co., Box 117, Mineral Wells, Tex. The pipe is offered in four pressure ratings. Applications for sprinkler systems are listed in the bulletin, along with physical and mechanical properties, chemical resistance data, flow characteristics, and working pressure charts.

Jacobsen Gives Warranty

Jacobsen Mfg. Co., Racine, Wis., now is giving a one-year warranty against crankshaft bending in its Hi-Torque engines that are mounted on rotary mowers with the 4-blade Turbo-Cut rotors. Warranties will be honored at any Jacobsen authorized service station where defective crankshafts will be replaced at no material or labor charge.

Fawick Signs Top Bowlers

Newly formed Pro Bowlers Assoc. have placed four men on the advisory staff of Fawick Flexi-Grip Co., Akron, O. which manufactures the Bowlers Pride grip. Fawick also manufactures Golf Pride grips.

ROBERT TRENT JONES

Member:
American Society of Golf Course Architects

*Golf Course
Architect*

20 Vesey Street
Tel: Beckman 3-1023
NEW YORK, N. Y.

Wm. F. Mitchell
Golf Course Architect

NORTH SUTTON
NEW HAMPSHIRE

P.O. BOX 7

PHONE 441