

# STEEL POWER CENTER

Patent Pending

# First Flight

## GOLF BALLS LOADED WITH POWER

**SOLD ONLY  
IN PRO SHOPS**



"Take it from me, the Steel Power Center First Flight is the greatest ball I ever played. The center is four times heavier, and this extra weight, concentrated in the center, creates additional power, reduces hooks and slices. It is the only golf ball center that is perfectly round and can never be knocked out of round. Play it once, and you will never be satisfied with the old type ball." (Signed) Jimmy Demaret

**PROFESSIONAL GOLF CO. OF AMERICA, INC. CHATTANOOGA, TENNESSEE**

teur champion in 1907, 1911 and 1912, and donor of the Curtis Cup for US-British girl amateurs' competition, has been named honorary chmn. of the Triangle Invitation Round Robin women's tournament at Tedesco CC, Marblehead, Mass., June 12-15 . . . John E. McAuliffe, Triangle chief, sponsors the tournament and Lionel McDuff is gen. chmn.

Joe Dahlman in his new \$125,000 clubhouse and pro shop at Tulsa's Mohawk Park where the new 18 was opened recently . . . Near opening of new \$100,000 clubhouse at Midwest City, Okla., Elks CC where Johnny Madden is pro . . . The new course was opened last year.

Quivira Lake CC, Kansas City, Ks., starting on long range course modernizing program to plans of Floyd Farley . . . Report about International Golf Assn. matches in Mexico City Nov. 20-23 conflicting with dates of Australian events is without foundation according to word received in U. S. from Australian golf officials and tournament sponsors . . . Dick Wilson has designed magnificent 18 for Laurel Valley CC, Ligonier, Pa. . . New club's membership includes many steel industry notables.

Joe Novak, pro at Bel-Air CC and form-

er PGA pres., is busy guy . . . In addition to heavy lesson schedule Joe has done an instruction phonograph record, "The Reluctant Golf Pupil" soon to be released by Decca, and is finishing a series of 26 TV golf instruction and entertainment shows for one of the major Hollywood outfits.

PGA has turned in its best job of promotion in the history of National Golf Day in its planning, production, distribution and publicity for the 1958 affair . . . Pres. Harold Sargent, Executive sec. Tom Crane and Publicity Director Bob Russell deserve a big hand for this job . . . Bob Paluzzi from the Apple Valley (Calif.) CC to become pro at Towanda (Pa.) CC . . . Towanda club is planning additional 9, enlarging of clubhouse and a pool.

Chester Sikora, personable youth who has been asst. pro in Chicago dist. for several years, has opened a lighted range at routes 83 and 45, Mundelein, Ill. . . . Jimmie Gallett, due to illness, has retired from golf and no longer will be asst. to his brother Francis at Bluemound CC, Milwaukee, where he has been for so long . . . Jimmie now lives in Abbottstown, Pa. . . . Francis is as fresh as ever . . . He started in this spring teaching 12 classes, each having 28 pupils.

**The  
ALL NEW  
FEATURE  
PACKED**

**PARGO**  
ELECTRIC  
**GOLF CAR**



**COMPARE THE EXCELLENCE OF PARGO ENGINEERING**

for **MORE COMFORT — MORE POWER — The BEST in PERFORMANCE**

Go Pargo. Write for complete information

**COLUMBIA CAR CORP. • Grovetown, Ga.**

Reuben Hines is architect of 18-hole Beaver Creek CC course to be built near Hagerstown, Md., for General Recreation, Inc., John Young, pres. . . . Chicago Tribune's 26th annual golf school in which Illinois PGA members teach free in 4 Chicago Park District locations, again a big success . . . Tom Walsh of Westgate Valley, former PGA pres.; Julian Lambert, then a fee course owner; and Charles Bartlett, Tribune golf writer, planned the initial school and are still running the widely-copied program.

George Abrams, the Acushnet representative in Chicago, Milwaukee and suburbs, started out this season's golf with a 69 . . . It was his first round in the 60s since 1921 . . . And George was a sick man a year or so ago! . . . He sure is a strong golfer now . . . Same goes for Harry Adams, MacGregor's boss man in Chicagoland . . . Harry was ailing a year ago and now, when he gets time to play, is scoring like he should go on the circuit.

Fred Sappenfield, moves from the Elizabeth Manor G&CC, Portsmouth, Va., to be supt. of the Willow Oaks CC, Richmond, Va., now under construction to plans of Wm. F. Gordon and Son. Harry McSloy, sec., Tidewater Turfgrass Assn.,

succeeds Sappenfield at Elizabeth Manor.

Special "anti recession" session of Connecticut legislature among other measures passed a bill authorizing Waterbury to issue bonds to build a new munny course . . . Congressional consideration of tax reductions to give business a boost might well OK favorable action on pleas to eliminate heavy tax on golf club building costs . . . The 20 per cent federal tax is killing some club building plans.

Winged Foot Club (NY Met dist.) where 1959 National Open will be played now has waiting list for first time in many years . . . Ernie Newton, new pro at Murfreesboro (Tenn.) G&CC has a new course for the club . . . The new layout will be built without interfering with use of present greens.

Country Club of New Jersey at River Vale now is a public course . . . As a private course it was known as Greenwood CC . . . John Handweg is owner . . . Lester Barrett, formerly asst. to the late Jack Thompson at the Blair Academy course, Blairstown, N. J., now is supt. at the course.

George Orullian's 22 years as pro-mgr. at Idaho Falls (Ida.) CC celebrated by the club with a big party for this grand

citizen . . . Ernie Schreiter, jr., is pro at new Ben Lomand GC, Ogden, Ut. . . . Jerry Krueger now pro at Brainerd (Minn.) . . . Mitch Tardiff now is pro at Phalen munny course St. Paul, Minn., succeeding C. V. Anderson who retired . . . Wally Rasmussen is now pro at Cloquet (Minn.) GC.

Ken Rutherford moves from Carlisle (Pa.) CC to be pro at Lebanon (Pa.) CC . . . Cameron Dunn is new pro at the Carlisle club . . . Charles Herling now pro at Talbot CC, Easton, Md. . . . Charles Sheppard at Exmoor CC (Chicago dist.) as pro succeeding Ed Stuppel who switched to Inverness CC (Chicago dist.) as pro . . . Jimmy Cotter is new pro at Lake Geneva (Wis.) CC.

New Jersey Section PGA working on a pro pension plan . . . PGA national organization frankly admitted they picked the wrong shell in the deal sold to them as a pension plan . . . Oh, well; live and learn.

Al MacDonald, pro at Langhorne (Pa.) CC, gave a putting lesson to Dr. Fletcher Sain prior to Dr. Sain's operation on Al for hernia . . . Dr. Sain holed out successfully on the veteran MacDonald who soon will be playing again . . . Ken Hubble from Ozaukee (Wis.) CC to be supt. at Hillwood CC, Nashville, Tenn.

Henry Lindner leaving pro job at Belle Meade CC, Nashville, Tenn., and Jim Cheatham resigning as Belle Meade's supt., to build and operate a par 3 course at West Palm Beach, Fla. . . . Ernest Binkley now is supt. at Belle Meade and E. E. (Bubber) Johnson is the new pro . . . Bill Rose now pro at Country Club of Peoria, Ill.

Ed Mattson, pro at Fernandina Beach (Fla.) munny course, has done exceptionally well in building golf interest at the shore community near Jacksonville . . . Now the Fernandina course is being enlarged from 9 to 18 holes with considerable work being done with equipment loaned by local plants.

Midwest Regional Turf Foundation Conference this spring at Purdue university had record attendance of well over 500 . . . Of those attending 170 were at the conference for the first time . . . Adolph Bertucci succeeds his father, Joe, as supt. at Lake Shore CC (Chicago dist.) . . . Joe retires on a pension . . . Fred James beginning his 54th year as supt., Au Sable CC, St. Hubert's, N. Y. . . . Ted Zorila now pro at Commonwealth CC, Newton, Mass.

## EVEN A CADDY CAN'T MOVE AS EASILY AS THIS CART

sell your players the

**STOWAWAY**

THE  
BEST  
CADDY  
CART  
SELLS  
FOR  
LESS



*Expandable axle  
for stability on  
any terrain*

PLACE HANDLE IN BAG, REMOVE BAG & FOLD



## IT FOLLOWS LIKE A FEATHER

Your players deserve the best available cart at the lowest price—and you can be sure they'll buy! The STOWAWAY is English-made, and costs less than any cart with comparable features. Remarkable easy-rolling lightweight design makes the STOWAWAY a favorite of women players. Tubular steel construction, ball bearing wheels, wide semi-pneumatic tires, expandable axle, easy-grip handle, and unique design make it easiest of all to use. 3-year guarantee. Compare features, compare prices—select the STOWAWAY.

WRITE TODAY FOR FULL INFORMATION

**SPORTS INTERNATIONAL**

P. O. BOX 356 • OAKLAND 4, CALIFORNIA

**POWER**

over 36 holes with ease!

**SERVICE**

no tinkering . . . just get  
in it and GO!

**ECONOMY**

the quality car in the  
lowest price range

This is the golf car everyone's talking about and buying . . . for it's proven itself on every type of course to be the most practical. The 1958 Highland Caddy is top quality . . . it will run longer and stronger . . . for less money . . . than any other golf car! Get the facts on this top performer before you buy.

**SPECIAL**

Re-manufactured Highland Caddies now available in limited supply, UNDER \$500! Complete with new car guarantee!



**Highland**  
**ELECTRIC GOLF CAR** **Caddy**

For information write to:  
HIGHLAND CAR CO., 116 Sidway, Jackson, Miss.

Ed Furgol has recovered from surgery on his right arm . . . He's still playing tournaments but probably will sign as club pro with a fine club soon . . . The club that gets Ed gets a fellow who is an excellent teacher and has a bright personality and working nature for promoting members' enjoyment of the game.

Louisville Jaycees lost again on their Derby Open tournament . . . Johnny Roberts, lefthanded trick shot golfer and father of Lana, 13-year-old exhibition golfer, signs as pro at Sullivan (Ill.) CC . . . Roland Brubaker and Harvey and Leroy Slagell of Washington, Ill., open 18-hole par 3 Hillcrest Golf Center.

Ralph Kirts heads organization planning to build 18-hole public course at Mattoon, Ill. . . . Rolling Hills CC, Tulsa, Okla., clubhouse razed by \$250,000 fire . . . Club formerly was known as Indian Hills CC . . . It is leased to Alsonett Corp. . . . Loss of equipment at Jack Shields' pro shop about \$5000.

Push construction on new course and clubhouse for Oak Meadows GC, near Rolla, Mo. . . . LeCompte Joslin in charge of course construction . . . George Page signs long-term lease on Locust Valley CC, Attleboro, Mass. . . . Page owns four other courses in the Boston district . . . Phil Mitchell signed as supt. at Locust Valley . . . Sign contract to build clubhouse at De Soto Lakes G&CC, Sarasota, Fla. . . . Course is expected to be in play in July.

PGA boots George S. May off its Advisory committee . . . May was appointed, along with Jerry Bowes, Bob Goldwater and Glenn Sisler, to advise the PGA Tournament committee . . . May, who has put up far more than anybody else as pro prize money and made tournament golf big business, took the invitation to advise the Tournament committee seriously . . . That situation has a lot of comedy in it.

Jack Ryan, Big Spring GC, Louisville, Ky., is chmn. PGA 1959 Seniors' championship committee . . . Wm. Graham, Bloomfield Hills (Mich.) CC is co-chmn. . . . Golf Course Supts. Assn. now has 1,208 members . . . That's double the 1952 membership.

It is interesting to see how John C. Price, Southern Hills CC supt. developed rough bordering his Bermuda fairways to approximate National Open character of rough at courses outside Bermudagrass territory . . . Southern golf turf experts have done great job in getting finer strains

for greens and improved grass for fairways and tees but haven't got a good grass for rough in the South yet.

The death of Harvey L. Lantz of the Iowa State college faculty shocked Iowa golf course superintendents like a family loss . . . Prof. Lantz, 69, died following a brief illness at his home in Ames . . . He started the golf course maintenance short courses and was their director . . . To Lantz Iowa supts. attribute a lot of the credit for the vast general improvement in Iowa course standards during the past 25 years.

Johnny Bass moves from Clifton Park pro post in Baltimore to the city's new Pine Ridge course when it opens late this month . . . Joe Vaeth, asst. to Bass at Clifton Park moves up to be Clifton Park pro . . . Eddie Ault remodeled Indian Spring GC (Washington DC dist.) so despite losing 150-ft. strip in widening a bordering boulevard the course retains 18 good holes . . . It will be played as a fee course until middle of 1959 when additional highway construction will put it out of business.

Tom Leonard, supt., Muskogee (Okla.) CC is new pres., Oklahoma Turfgrass Assn. . . . Vp is Wm. Melton, supt., Meadowbrook CC, Broken Arrow; Sec. is Lester Snyder, supt., Oaks CC, Tulsa; and Treas. is Chick Clark, pro-supt., Oakcrest CC, Ada, Okla.

Thirtieth annual turf conference of Minnesota GCSA set attendance records . . . At the banquet supts, and golf officials honored three of the Minnesota GCSA charter members, Leo Feser, Leonard Bloomquist and Emil Picha . . . Herman Senneseth, supt. Somerset GC, St. Paul, was elected the organization's pres. . . . Ray Hall, Anoka (Minn.) municipal course was elected Vp, and Robert Feser, Medina GC, Wayzata, Minn., sec.-treas.

Hi-Lo GCSA organized by supts. of courses in Palm Springs-Indio, Calif. area . . . Briergate CC, semi-private course at Deerfield, Ill., owned by Robert Bruce Harris, has been leased and will be operated as Briarwood CC, a private club . . . Briergate was constructed in the '20s as a private club and was designed by Colt and Alison who were architects for Bob o' Link and Knollwood in Chicago dist., about that time.

Another son, Wm. Andrew Sixty, born to the Billy Sixty, jrs. . . . Daddy is asst.

(Continued on page 106)

**PRO PROMOTED FOR PRO SALES**



**CHICK HARBERT**

Used Golf Prides in my greatest triumphs.



**ART WALL**

Should have had my Golf Prides years ago.

Increase Pro Shop sales with better looking, better feeling

**TRACTION ACTION**

*Golf Pride*  
**GRIPS**



**TOMMY BOLT**

Golf Prides for extra power, keen control.



**HOWIE JOHNSON**

The new Victory grip feels great.

**NEW VICTORY MODEL**

The Golf Pride Victory grip has the "Gripriite-Swingrite" feature, a form finder that helps all golfers. The Victory herringbone design feels great, improves traction, reduces tension. Cash in on Victory "appeal", national advertising and promotion by these and other prominent pros.



**WALLY ULRICH**

Form Finder of Victory Grip helps all golfers.



**GAY BREWER**

Traction Action puts you stokes ahead.

**DRIVE FARTHER! HIT STRAIGHTER!**

**FAWICK FLEXI-GRIP CO.**  
Box 8072 Akron 20, Ohio



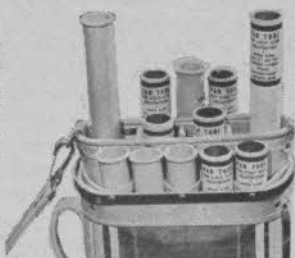


Regular • **SELL PAR TUBES** • Plastic

No matter which tube you buy, you can be assured you will be handling the best • The Regular is tough, moistureproof and proven • The Plastic is tough, non-brittle with rolled edge • Both will give full length protection to clubs and grips • Will fit any bag • Allows full unrestricted use of each club in individual compartment type bags • Regulars packed 42 and 144 per carton — Plastic 42 per carton.

Contact Your Local Distributor or

**PAR TUBE** 137-141 S. ALBANY AVE.  
CHICAGO 12, ILLINOIS



### Gibberellic Acid

(Continued from Page 66)

to the concentrations applied. The effect of gibberellic on Kentucky blue was observed in 3 to 4 days and was still evident three months after treatment.

Leben obtained an increase in both fresh and dry weight of Kentucky blue clippings treated with gibberellic acid especially when it was used in conjunction with fertilizer. Once a dense turf is established, it would be preferable for lawn purposes to have grass grow slowly in order to decrease maintenance costs.

#### May Induce Fall Growth

Field tests indicate that gibberellic acid may be useful for inducing the growth of some grasses in the fall and again in the spring. Gibberellic acid has been used successfully in Michigan in the spring to induce growth in bluegrasses and Bermudas when growth would not have otherwise occurred. Bermuda was dark green within 10 days when treated on Apr. 16, 1957, with 2 ounces of gibberellin per acre.

Gibberellic may prove to have a place

on golf courses where it could be used to enable play to start earlier in the spring and to extend it later in the fall. However, the effect of gibberellic for breaking spring and fall dormancy has not been well established.

#### Summary

Merion Kentucky blue and Common Kentucky seed were treated with various concentrations of gibberellic acid. Seed treated with gibberellic did not germinate earlier than the control, nor was subsequent seedling growth more rapid.

Stolons of bentgrass, Bermudagrass and zoysia were soaked for 24 hours in different concentrations of gibberellic acid. In the greenhouse, bentgrass was most responsive followed by Bermuda. Zoysia responded very little to gibberellic acid treatments.

In the field, the best growth of bentgrass was observed at 10-50 ppm; above these rates spindling growth was evident. At the 500 ppm concentration Bermuda stolon growth was slightly inhibited. In Meyer zoysia additional upright growth was observed following application of gib-

## For better and more economical golf ball washing **HENRY Golf Ball WASHER**

• Will dress up any course • Dirty water will not splash • Heavy gauge steel • **NEW** improved insert in rubber squeegee • Oil impregnated bearings • No brushes to rot.

**A. C. Schendel, Distributor**

Box 92, Waukesha 5, Wisconsin

Dealers in all principal cities



**BALL  
WASHER  
\$14.75**

Prices F.O.B.  
Waukesha, Wis.

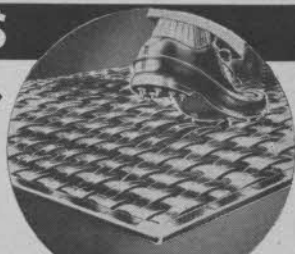
# SAVE CLUB HOUSE FLOORS

## WITH SPIKE-RESISTANT PNEU-MAT RUNNERS

Protect your floors from spike holes with rugged Pneu-Mat Runners. Absolutely spike-resistant, they provide a comfortable walking surface—improve the appearance of your club house.

Woven of rubber-impregnated fabric, Pneu-Mat Runners are tougher than rubber runners. Reversible for double wear.

**Money Back Trial Offer:** Order a trial section. Test it on an area which gets especially hard wear. Money back if not satisfied.



### STANDARD WIDTHS

20" - 24" - 30"  
36" - 42" - 48"

### Trial Section

24" x 60"  
\$12.50 postpaid

Write today for illustrated folder

**SUPERIOR RUBBER MFG. CO., INC.** • 145 Woodland Ave., Westwood, N. J.

berellic acid but no improvement was obtained in rate of turf establishment.

Additional research is necessary to determine the value of gibberellic for breaking spring and fall dormancy of both cool and warm-season grasses; its usefulness as an adjunct for weed control; and to determine whether rate of root growth is affected adversely by the high concentrations of gibberellic acid.

### Use Forceful Approach in Selling Club on Improvements

An article in the Green Breeze, monthly publication of the Greater Cincinnati GCSA, written by a fellow with the pen name of Edsel Midiron, declares that many a supt. doesn't use the right approach in requisitioning a new piece of equipment or a course improvement.

Too often, says Edsel, an oral request is made and the official to whom it is given forgets it, or the supt. doesn't follow it up. Many times a proposal is

merely scratched on a piece of handy paper and doesn't make much of an impression when it is passed around at a green committee or board meeting.

Edsel says he has been guilty of such practices. But he has noticed that when he carefully draws up a proposal with plans, diagrams, costs, etc., clearly explained, his chances of getting favorable action are increased 100 per cent.

### Model Put on Display

A year ago when Edsel wanted to replace a poorly constructed green that had given him a great deal of trouble for as long as he could remember, he made up a Pastalena clay model of a new green that showed drainage contours, sandtraps, mounds and surrounding trees and a creek. It was mounted on plywood and even sand was put in the traps. The green committee couldn't okay it fast enough. Then the model was displayed in the clubhouse lounge for two weeks with the supt's name prominently displayed as the architect.

## The most versatile Turfgrass ever introduced

W & G  
**Ugandagrass**  
TRADE MARK

Have you seen the W & G Ugandagrass tee, Gleneagles C. C., Lemont, Ill.?—Walter Fuchs, Supt.

### O. S. BAKER FINE TURFGRASSES

ROUTE 4, BOX 876

9995 S.W. 88TH ST. (N. Kendall Drive)

MIAMI 56, FLORIDA

MOhawk 7-8512

### FRED V. GRAU

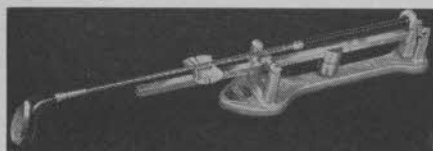
P.O. Box 177; COLLEGE PARK, MD.

UNION 4-0090

ADDRESS ABOVE FOR  
FREE BULLETIN—DEPT. G2

## KEN Shop Supplies

Help You Give Better Service



### PRORYTHMIC Golf and Tennis Balance

Used by virtually every golf club maker throughout the world for accurately measuring swinging balance and correct weight. Essential in any Pro shop where golf clubs and tennis racquets are sold. Made and sold only by Kenneth Smith.

ALSO: Ellingham Tools, Grip Conditioner, Adhesives, Listing, Buffing and Cleaning Supplies — and all other shop needs. The most complete stock of golf supplies in the golf industry.

Write for handy SHOP SUPPLY LIST

# Kenneth Smith

GOLF CLUBS *Hand made to fit You*

BOX 41-GM, KANSAS CITY 41, MO.

*World's Largest Custom Club Maker*

## GOLF DISPLAY FIXTURES

FOR PEG-BOARDS

GOLF BAG TAGS

GOLF PRIDE GRIPS

ALSO CLUB MEMBERSHIP TAGS

PRO CHARGE BOOKS

GREEN FEE BOOKS

"I-D" CLUB IDENTIFICATION LABELS

BEAUTIFUL GOLF PRO STATIONERY

CADDIE & WAITERS BADGES

8 CLUB CARRIERS

GOLF COURSE SIGNS

GOLF BALL PUNCH BOARDS

MERCHANDISE CERTIFICATES

GOLF CAR CONTRACTS & KEY SYSTEMS

SCORE CARDS

## MILLER GOLF PRINTING

2053 HARVARD AVE., DUNEDIN, FLA.

SEND FOR CATALOGUE

## North Hempstead Turf

(Continued from page 46)

areas were softer and easier to walk on. The greens would hold a shot better, and it was easier to tee-up a ball on the tees. In the latter part of August, we made a follow-up application on the greens as recommended (2 to 3 months later.) There was a continual improvement in both appearance and density of turf. This lasted into the fall.

This past year has proved to me that



Greens and putting clock (above) no longer fade with first heat spell. Members are elated to know they can play from April Through October at North Hempstead on turf that will hold up.

there are new techniques being developed continually that many of us aren't aware of. Changing characteristics of plain water and making it "wetter" is certainly one of them. Besides producing excellent turf, we estimate that we have saved 30 per cent in the labor needed to maintain our greens and tees. We have used less water and we have watered less frequently than before. Last April we examined the roots of the turf on the treated areas and found them to be nearly twice as deep as in previous years.

This year we will be using Aqua-Gro extensively. We plan to use it in treating the clubhouse lawn and other high traffic areas as well as for more general use on the course.

## Committee Studies Traps

A sand trap committee has been appointed at Beverly CC (Chicago dist.). Green Chmn. R. A. Podesta in a note to his committee says: "When it is realized that since 1940, the cost of sand has increased about 70% and in the same period our labor cost has risen over 60%, it becomes obvious that a re-appraisal of our trap situation is desirable. The program should have the following objectives: Elimination of unnecessary traps. Possible reduction in size of traps. Possible redesign and/or relocation of present traps."



## Golf Business Good

(Continued from page 28)

back, that the trade-in clubs might be the headache that used cars are to the automobile dealers. Pros' good business judgment appears to have the trade-in situation now well under control.

One professional comments on the trade-in marketing:

"Trade-in club business now is so big and important that we may be missing the boat by regarding it casually because we have no trouble in getting rid of the clubs we take in.

"I am thinking of putting these clubs into good shined-up, revarnished condition, getting the grips renewed and putting a decalcomania on the shafts or wood head showing that the clubs have been renewed by me.

"I believe I'll make money on the deal and get good advertising."

### Pro Rising Costs Shared

Apparently about half of the private clubs have been understanding and helpful concerning the sharply rising costs of the service they expect from the pro department.

Raising costs of club-cleaning and storage, better contracts and with substantial salaries, absorption of some of the costs of assistants' services and, in a few cases, paying for additional assistant's service with golf car revenue, have eased the load of higher operating costs for some pros.

But there's still a lot to be done in balancing the higher cost load in pro department operations. Many club officials haven't the slightest idea of how pro department services to members have increased and costs have jumped beyond a fair division. Several instances are reported of adjustments being promptly made when club officials were acquainted with the situation.

### Tournament Interest Small

Most professionals advise that their club members don't have the slightest interest in the PGA Tour-

Introducing...

A DISTINCTIVE  
LINE OF  
GOLF TROPHIES,  
AWARDS AND  
RIBBONS.



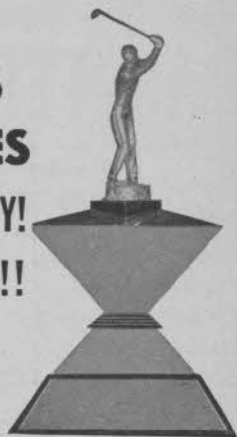
Send for **FREE FULL**  
COLOR CATALOGUE  
NO. 102



Phone LE 2-0430

**E. & H. SIMON Inc.**  
381 Fourth Ave. N. Y. 16, N. Y.

**GOLF  
TROPHIES  
and PRIZES  
HIGHEST QUALITY!  
LOWEST PRICES!!**



• • •  
**FAST  
SERVICE**

No. 900-Z9-5  
All Sunray Trophy.  
Walnut Base.  
Height 11"....\$13.00

**HAND ENGRAVING ONLY 6¢ PER LETTER**  
Manufacturers of "Dubbin' Doug"

**WRITE FOR FREE 1958 CATALOG**  
**THE TROPHY AND MEDAL SHOP**

Dept. G-6 10 S. Wabash Avenue  
Chicago 3, Illinois Central 6-5018

# PHILLIPS

CAM LOCK



The world's finest and best known.  
Will not turn or break apart.  
PRO'S CHOICE

F. C. PHILLIPS, INC.

STOUGHTON, MASS.

Leads Them All — On Its Record

## PAR-TEE

The Proven Automatic Tee

No other golf tee approaches its 32 year record of — continuous, dependable service



For 32 years—made, sold and serviced by PAR-Inc. For 32 years—hundreds of PAR-TEES in continuous use, and still the most modern tees, with lowest upkeep and unflinching performance. No other tee has as many tees or years of use as the PAR-TEE. That's the record behind PAR-TEES. Complete with driving and standing mat — ready for use in a jiffy. Available for rent or for sale.

**PAR-INC.**

Telephone: STewart 3-2400

860 East 75th Street • Chicago 19, Ill.

nament Bureau's disputes. One pro advises that members in his locality have been told the PGA side of the latest case and feel that some sponsors should have no part in golf for the good of the game. Another professional believes that the average member feels the PGA should clean up its house. Two more express the opinion that club members who have great regard for their own pros wonder why the PGA can't conduct its tournament operations on the high class basis on which the USGA operates with clubs that are hosts to its championships.

### Women's Golf Picture Bright

On the completely bright side of the golf business picture as pro authorities see it is women's golf.

Only one pro reported that women's play so far this year isn't ahead of last year's figure at his club and, generally, in his district. All others said that increase in women's play has been from "average" to "excellent."

Women's buying at pro shops isn't increasing in proportion to the increase in women's play. The women are close buyers, especially of clubs. They are doing quite a lot of apparel buying for their husbands and children in the pro shops so several pros advise.

### National Senior Open

The second National Senior Open is scheduled to be held at Spokane, Wash., Sept. 13-15. George Howard, pro at O'Donnell GC, Palm Springs, Calif., is pres. of the National Senior and Joe Albi, pres. of the Athletic Round Table, Tacoma, is tournament sponsor.

### COLBY PIONEER PEAT

Products for building and maintaining golf greens are available in winter storage for prompt shipment.

**BLACK**—cultivated fine milled for top dressing.  
**BROWN**—peat for building new greens.  
**GREENS**—top dressing (1/3 peat - 1/3 sharp sand and 1/3 loam), or any required proportion.

QUOTATIONS on materials packed in plastic lined bags, or in bulk gladly furnished.

**COLBY PIONEER PEAT CO.**

P.O. Box 115

HANLONTOWN, IOWA