

J. Press Maxwell
 Golf Course Architect

3855 Walnut Hill Lane

Dallas, Texas

Fleetwood 2-8889



Member American Society of Golf Course Architects

Werring Named Merchandise Director by Sabayrac

Lyle (Bud) Werring, a golf pro for 20 years, has been appointed to the newly created post of merchandising director of Ernie Sabayrac, Inc., PO Box 1177, Hialeah, Fla., a national golf sales agency. A University of Minnesota graduate, Werring was an artillery captain in World War II. He operated shops in the Midwest and South while a pro and in 1957 toured Europe and North Africa putting on golf clinics for GIs. Later in the year he became a Sabayrac rep in the Southeast. His new job puts him in the role of a merchandise missionary. The Sabayrac organization represents Foot-Joy, Ben Hogan Co., Palm Beach, Izod, Cobernit, Haymaker, Flip-It and Exeter Hosiery.



Werring

Puschin VP at Nitroform; Two Agronomists Appointed

Nitroform Agricultural Chemicals Co., Sunny-side ave., Woonsocket, R. I., recently announced appointment of three key personnel. Albert J. Puschin has been named executive vp and will concentrate on sales and production. A graduate of MIT, he is a chemical engineer and has been

ALFRED H. TULL

Golf Course Architect

Larchmont, New York

frequently engaged as a consultant by both industry and the government.

Raymond E. (Dutch) Harman and Charles K. Mruk have been appointed agronomists by Nitroform. Harman, who covers the Mid-Atlantic section, was an agricultural agent for 30 years and has written many articles and conducted several radio programs touching on turf and related subjects. Mruk, who got a Master's degree from University of Rhode Island in 1957, has been with Nitroform for about one year. He covers the Northeast section.

Obitz Gets Plymouth Trophies

Harry Obitz, head pro at Shawnee-on-Delaware (Pa.) CC, recently got a pair of trophies for scoring a hole-in-one with a PGA ball, which is made by Plymouth Golf Ball Co., Plymouth Meeting, Pa. Obitz got both the pro trophy and golfer trophy for performing the feat. So far in '58, Plymouth has made 175 awards to amateurs and 15 to pros.

Eaton Markets Foot Spray

Charles A. Eaton Co., maker of Etonic-PGA golf shoes, is now marketing 20th-Hole Foot Spray in a push button can. It is said to give instant relief to hot, tired and burning feet. The spray also contains ingredients that are claimed to control athlete's foot. The formula for 20th-Hole was developed expressly for Charles A. Eaton Co.

**SERVICE FOR GENERATION
 ONLY FEW ¢¢ PER DAY!**

Write for FREE Catalog!

**The MURDOCK Mfg. & Supply Co.
 Cincinnati 2, Ohio**

**MURDOCK
 OUTDOOR
 DRINKING FOUNTAINS
 HYDRANTS
 LAWN HOSE BOXES**



**RYANS O.K. No. 4 SEEDER & SPREADER
 4 Cu.Ft.(300 Lbs.) Capacity-3 Ft. Spread**



**No Holes to Clog.
 Quick Shut-off Lever &
 Adjusting Gauge
 Screw On Handle
 Spreads Top Dressing,
 Nitro-Humus, Peat,
 Commercial Manure
 & Other Materials
 Successfully
 Weighs Only 69 Lbs.
 Write Dept. "G"**

**DEALERS WRITE FOR OPEN TERRITORIES
 H. & R. MFG. CO., Los Angeles 34, Calif.**

Wm. F. Mitchell *Golf Course Architect*

NORTH SUTTON
NEW HAMPSHIRE

P.O. BOX 7

PHONE 441



Here are MacGregor's 1958 Louise Suggs "720" models. Woods feature persimmon heads finished in a rich red glaze and a new, two-toned face of white fibre with a red insert. Irons have popular V-back design for concentrated power. Club heads are precision broached to assure perfect balance and maximum playability. Irons and woods are custom fitted with light, strong True Temper Meteor chrome shafts and feature perforated and beveled leather grips in two-toned black and red.

Dr. Scholl's Insoles

True, 18-hole walking comfort comes when your feet are cushioned with the soft Latex-Foam of Dr. Scholl's Air-Pillo Insoles, according

Bob Baldock GOLF COURSE ARCHITECT FRESNO, CALIFORNIA

**11 Courses Under Construction
Among Them**

SO PAR-O-VAN C.C.
FALLON, NEVADA

ANTIOCH MUNY
ANTIOCH, CALIF.

BAYWOOD C.C.
ARCATA, CALIF.

EUREKA MUNICIPAL
EUREKA, CALIF.

to the manufacturer, Scholl Mfg. Co., 213 W. Schiller st., Chicago 10. The insoles are air-ventilated and air-cooled and slip easily into golf and dress shoes. They are particularly recommended for persons who suffer from tired, tender and burning feet and whose golf game suffers because of this.

Hints on Super Crab-E-Rad

According to West Point Products Corp., West Point, Pa., Super Crab-E-Rad may be applied with any good sprayer rig. A wetting agent gives it no special increase in efficiency. In all spray applications a fine spray is most desirable. On large jobs it is not practical to apply Super Crab-E-Rad to individual or clumps of crabgrass but by area. The eradicator should not be applied when the ground is parched or dry but should follow adequate watering.

Cub Lo-Boy Is Versatile Tractor

International Harvester Co. points out that its Cub Lo-Boy has all the features of larger tractors, including hydraulic control, individual rear brakes for making pivots in cramped quarters and plenty of power to handle more than 25 items of special equipment. In addition it can be used with a complete line of landscaping and tillage tools.

BUYERS' SERVICE — Page 85

ROBERT TRENT JONES

Member:
American Society of Golf Course Architects

*Golf Course
Architect*

20 Vesey Street

Tel: Beekman 3-1023
NEW YORK, N. Y.



ROBERT BRUCE HARRIS

Golf Course Architect

MEMBER AMERICAN SOCIETY OF GOLF COURSE ARCHITECTS

664 N. MICHIGAN AVENUE CHICAGO 11 • ILL.
WHitehall 4-6530

James G. Harrison

GOLF COURSE ARCHITECT

Member:
American Society of Golf Course Architects

266 Harrison Road
Valley 3-3444

Turtle Creek, Pa.
Suburb of Pittsburgh



DAVID GILL

Golf Course Architect

country club, resort
and municipal courses
of distinction

ST. CHARLES, ILL. phone 5883

Needlecraft Offers Locker Door Utility Bag

Needlecraft Mfg. Co., PO Box 9, Providence 1, R. I., markets a locker door Utility Bag that fits any standard locker door. Eleven by 54 ins., it has seven graduated Scotch plaid pockets with black leatherette back and trim. Each bag has inserted wooden mold top and bottom with wire attached. The bag ties to locker door vents. Everything from shoes to small items can be stored in the pockets. Pros are invited to write to Needlecraft for further information. Discount rates are the same as for other pro shop items.

Trade Briefs

Jacobsen reel type power mowers are being used to help maintain the huge lawn areas at the World's Fair in Brussels, Belgium . . . Lawn Tint, made by Luminal Paints Div. of National Chemical & Mfg. Co., 3617 S. May st., Chicago 9, is said to be getting a heavy play from people who paint out the brown in their turf . . . Special kraft paper is used by Chase Bag Co., 309 W. Jackson blvd., Chicago 6, in its disposable shower slipper, "Tredz."

Another firm, whose products are being used for maintenance purposes at the Brussels Fair, is West Point Products Corp. . . . They include the Aerifier, Verti-Cut and Aeri-Dryer . . . Barteldes Seed Co., 3770 E. 40th ave., Denver,

has been named exclusive power mower distributor for Colorado by Toro Manufacturing Corp. . . . Purr-Fect Putting Practicer, marketed by Commonwealth Co., Alhambra, Calif., is a portable device that is said to give the correct guide, groove, etc.

Plastic golf ball markers, supplied by Old Hickory Distilling Corp., 1429 Walnut st., Philadelphia 2, are being passed out at many clubs . . . John W. Vance has been promoted from assistant to director of public relations by International Harvester Co. . . . Wilson Sporting Goods Co. is plugging Patty Berg Staff model woods and Dyna-Powered irons by sending out oversize, color postcards showing Patty and the clubs.

Supts. can get a lot of information about automatic water systems by writing Febco, Inc. 1993 Blake ave., Los Angeles 39, Calif. . . . Gear reduction unit that adds three forward and one reverse speeds to International Harvester's Cub tractor is being offered by Howard Rotavator Co., Arlington Heights, Ill. . . .

Stonco Electric Products Co., 333 Monroe ave., Kenilworth, N. J., has developed a high power floodlight designed for long-throw coverage of wide field areas . . . It is well adapted for ranges . . . Hiller Engineering Corp., San Jose, Calif., is marketing a new sprinkling device for areas too large to be watered with conventional single sprinklers.

GOLF COURSE CONSTRUCTION

By CONTRACT

•
35 Years Experience
•

MADDOX CONSTRUCTION COMPANY

Phone 110

Rankin, Ill.

WILLIAM P. BELL & SON

GOLF COURSE ARCHITECTS

Member: American Society
of Golf Course Architects

•
544 Sierra Vista Avenue
Pasadena 10, California
Sycamore 3-6944 Atlantic 7-2933

Packard & Wadsworth GOLF COURSE ARCHITECTS

Telephone: FLEETWOOD 2-2113

11 SOUTH LA GRANGE ROAD LA GRANGE, ILLINOIS

WILLIAM B. LANGFORD GOLF COURSE ARCHITECT Balanced Topographical Design

Member:

American Society of Golf Course Architects
Telephone: AUSTIN 7-3371

621 N. Central Ave., Chicago 44, Ill.

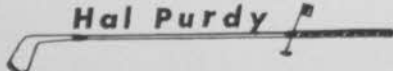
CHARLES E. STEWART

Registered Engineer

Water Supply • Pumping Plants
Irrigation • Drainage

Reports • Designs • Supervision
18357 Homewood Ave., Homewood, Ill.

Hal Purdy



GOLFING FACILITIES

Design Supervision

Construction • Management

P. O. Box 215, Uptown Station

Kingston, N. Y. Phone—FE 1-8162

Special Events Trailer

Kenwood CC, Kensington, Md., is using a

Special Events trailer as a mobile snack shack for tournaments and other club events. The trailer, manufactured by Atlantic Trailer Corp., 719 North Point Rd., Baltimore 6, originally was developed for bottlers and concessionaires at carnivals and other outdoor functions. The trailer is built on 6- and 4-in. steel chassis, interior trim of plywood and exterior is covered with .025 aluminum. The side or serving counter is 43 ins. from the ground.



E-Z Spread for Many Purposes

Oakfield Enterprises, Inc., Oakfield, Wis., is marketing what is said to be a new rotor type,

COUNTRY CLUB—RESORT and MUNICIPAL COURSE MANAGEMENT SPECIALISTS

Consultation Service or
Complete Course Management

National

International

DELAWARE VALLEY GOLF ASSOCIATES

6922 Rutland St., Philadelphia 49, Pa.
Fidelity 2-6974

GEOFFREY S. CORNISH

GOLF COURSE ARCHITECT

Fiddler's Green South Amherst, Mass.

Phone: Alpine 3-3913

ALEXANDER G. McKAY

Golf Course Architect

DESIGN and CONSTRUCTION

Green Building Specialists

Phone 3462

P.O. Box 176

Morristown, Tenn.

ROWLAND ARMACOST

Golf Course Architect

Stonehouse Road

Hinsdale, Massachusetts



Phone Olympia 5-2704

bin vibrating, multi-purpose spreader. The machine, called the E-Z Spread, has adjustability for almost any type of material and spreads an even coating of desired density up to 8-ft. swaths. It has positive micro-adjustable flow control, heavy all-weld frame and remote shutoff and vibration control at handle. Model 20 has 20 qts. hopper and Model 30 has 28 qts. hopper. Details can be obtained by writing the manufacturer.

Color in Con-Voy Carts

Color has been introduced to the Con-Voy golf cart, manufactured by Product Engineering, 4707 S.E. 17th, Portland, Ore. The cart now features gold anodized aluminum tubing which is said to increase scratch resistance and give protection against discoloring. The cart also has a higher balance point than heretofore and wider wheel base.

FOR YOUR CONVENIENCE—GOLFDOM'S Buyers' Service

Check off your Needs, tear out and mail this sheet to Golfdom, 407 S. Dearborn St., Chicago 5, Ill. You'll get prices, literature direct from the sources of supply.

Golf Course

Aerifying equipt.: Fairway ☐
green ☐
Architects: course ☐ house ☐
Ball Washers
Ball Washing Compounds
Bent grass stolons
Brown-patch preventives
Compost mixers
Crabgrass control
Crabgrass control machine
Drinking fountains
Edging machines
Fertilizers Solid ☐ Liquid ☐
Flags (greens) ☐ Flag poles ☐
Fungicides
Hole cutters
Hose
Hose clamps
Humus
Incinerators
Insect fogging machine
Irrigation consultants
Lapping-in Machine
Leaf Pulverizer
Line markers
Miniature Course Const'n
Min. putting surface (felt)
Mowers: putting green ☐
whirlwind ☐ tee ☐
fairway ☐ rough ☐ hand ☐
Mower Grinders
Peat Moss
Pipe
Pipe, tile litching
Playground equipment
Putting cups
Rakes (worm cast & clean-up)
Refuse containers
Rollers: power ☐ water filled ☐
Sand (for greens, tees)
Seed: fairway ☐ green ☐
Shelters
Shoe Spike Cleaner
Sod cutter
Soil conditioner
Soil screeners ☐ Soil shredders ☐
Sprayers: power ☐ hand ☐

Spreaders, fertilizer,
seed, topdressing
Spikers: greens ☐ fairway ☐
Sprinklers: f'way ☐ green ☐
Stone picker (mechanical)
Sweepers-mulchers
Swimming pool equipment
Swimming pool cleanser
Swimming pool paint
Tee Markers
Thatch removing machine
Tires (slip-over, for cars &
mowers)
Tractors
Trucks (course maintenance)
Turf Insecticides
Turf sweepers
Water systems, fairway
Weed chemicals

Pro Shop

Bags: canvas ☐ leather ☐
Bag carts, for players
Bag racks
Bag Tags—Guest Tags
Balls: Regular ☐ Range ☐
Ball Markers
Ball retriever
Batteries (golf cars)
Battery chargers
Caps and hats
Cars (golf)
Cash Registers
Charge books — for pro shops,
green fees, etc.
Club Cleaning Liquid
Club cleaning machine
Clubs: Woods ☐ Irons ☐
Putters ☐
Club head covers
Club repair supplies
Display equipt.
Dressing for grips ☐ bags ☐
Electric golf cars
Golf bag covers
Golf club protectors
Golf club washers
Golf gloves

Golf Grips: Leather ☐
Composition ☐
Golf Practice Devices
Golf shoes
Golf Shoe Spikes
Handicap racks ☐ cards ☐
Locker door utility bag
Mech. Range Ball Retriever
Name labels, for clubs
Practice driving nets
Practice Golf Balls
Preserver for leather
Score cards () Charge checks ()
Score card & pencil Tee Box
Score counter (watch type)
Seat attachment, for carts
Sportswear: Shirts ☐ Socks ☐
Sport jackets ☐ Rain jackets ☐
Windbreakers ☐ Slacks ☐
Ladies' Bermuda shorts
Tees
Tee mats
Tees (rubber) for driving mats
Teeing device (automatic)
Trophies

Club House

Athletes Foot preventives
Bars (portable)
Bath brush — (Turkish type)
Bath mats
Bath slippers
Cash Registers
Deodorants
Disinfectants
Financing (new, modernization)
Floor coverings
Folding Table (Banquet)
Glasses, decorated
Link Type Mats
Locker Name Plates
Lockers
Printing
Runners for aisles
Rugs
Showers ☐ Shower mixers ☐
Shower water control
Step treads
Wash fountains

Send information

Club

To: Name

Title

Club

Address

Town

Zone (.....) State

32nd YEAR OF SERVICE

as golf's clearing-house
of information on the
most successful
operating practices
and products.
Make use of it!

Each month GOLFDOM presents the latest, most practical ideas on golf club administration, management, upkeep and service . . . for time, labor and money-saving guidance of your officials and department heads. Help the *right men* at your club do the *job right*. Send in the form below. Keep them informed on the latest how-to-do-it ideas!

FILL IN BELOW — MAIL THIS PAGE TO

GOLFDOM, 407 SOUTH DEARBORN STREET, CHICAGO 5, ILLINOIS

Name of club:	<input type="checkbox"/> Private	No. of
	<input type="checkbox"/> Semi-Private	Holes
	<input type="checkbox"/> Muny	<input type="checkbox"/>
Address	Town:	Club
Zone () State	By	Position

President's:

name (Zone)
Add.: Town: State:

Grn. Chmm's.

name (Zone)
Add.: Town: State:

Manager's:

name (Zone)
Add.: Town: State:

Course Superintendent's (Greenkeeper)

name (Zone)
Add.: Town: State:

Professional's:

name (Zone)
Add.: Town: State:

LAWN MOWER STATIONARY BLADES



SINGLE (1/4") Raised Lip — Heavy Duty Blades for all Makes of Fairway and Rough Gang Mowers. **DOUBLE (1/4") Raised Lip** — Heavy Duty Blades for all Makes using this type Blade. Hand and Power Putting Green Mower Blades, Power Mower, Tee Mower and Trimmer Blades all made of the best quality knife steel and specially hardened to insure long wear and fully guaranteed to give complete satisfaction. Municipal Parks and Golf Courses, Public Courses, Golf and Country Clubs, Dealers and Repair Shops allowed special discount. You will save important money buying direct from manufacturer.

Price sheet on request
or we will quote price
for your blade order.

JONES MOWER & EQUIPMENT CO.

2418 Grasslyn Avenue, Havertown, Pa.

We pay the postage
on all orders of \$15.00
and over.

Classified Ads

Rates: Minimum insertion \$4.00 for 20 words; additional words 20c each. Bold face type, 25c per word. Classified cols. reserved for help or services wanted and for sale of used equipment. **NO CLASSIFIED ADS ACCEPTED AFTER THE 25th OF MONTH PRECEDING DATE OF ISSUE.** Under no circumstances are we permitted to divulge the name and address of those placing the blind advertisements. Responses to all box number ads should be addressed to the box number and mailed to **GOLFDOM**: replies are promptly forwarded to advertisers.

JOBS WANTED

Available — Efficiency expert, versatile over-all knowhow, the golf business being my heritage. Interested in new or old club that desires modernization, progressive promotional guidance. 20 years Class A PGA pro, architect and manager qualifications. (Contract arrangement only.) Call Windsor 5-0898 (Chicago) or Address Ad 705 c/o GOLFDOM.

AVAILABLE — 37 YEAR OLD PROFESSIONAL-GREENKEEPER — COMBINATION. PRESENTLY EMPLOYED. WANTS POSITION OPEN ALL YEAR AROUND. WELL EXPERIENCED IN BENTS AND BERMUDAS. GOOD TEACHER AND ORGANIZER. TOP EXPERIENCE IN DEVELOPING NEW CLUBS. WILL WORK HARD. WIFE WILL ASSIST. ADDRESS AD 703, c/o GOLFDOM.

CLUB MANAGER: WITH BACKGROUND OF 20 YEARS SUCCESSFUL CLUB OPERATION DESIRES TO MAKE CHANGE DURING SEPTEMBER. IS THOROUGHLY EXPERIENCED IN EVERY PHASE OF CLUB WORK. WIFE ASSISTS IF DESIRED. CAN GIVE BEST OF REFERENCES, BUT INTERESTED ONLY IN A PERMANENT CONNECTION. BASED ON ABILITY TO PERFORM SATISFACTORILY. WOULD PREFER CLUB OF APPROXIMATELY 350 MEMBERS, BUT CAPABLE OF ANY SIZE OPERATION. WILL CONSIDER CHANGE BEFORE SEPTEMBER IF REQUIRED. LOCATION NO OBJECT AND NO DEFINITE SALARY REQUIREMENT STIPULATED. ADDRESS AD 701, c/o GOLFDOM.

Young Pro (21) desires position as assistant golf professional at reputable club. Experienced and respected teacher. Aggressive promoter and salesman, sub par player. Married, non-drinker. Address Ad 702, c/o GOLFDOM.

JOBS OPEN

SALESMAN WANTED. TOP GRADE HAND-MADE ITALIAN GOLF SHOES. PATENTED. TO PROS. NEW ENGLAND, MID-ATLANTIC, TEXAS, SOUTHWEST, CHICAGO, MIDWEST. GOOD COMMISSION AS SIDE LINE FOR MEN USED TO HIGH QUALITY. ADDRESS AD 704, c/o GOLFDOM.

MANAGER/WIFE Team or Pro wanted to supervise full operation new nine-hole Public Golf Course, opening July 4th, in Western Massachusetts; living accommodations. Box 98, Canal St. Station, New York 13, N. Y.

Salesmen for the Dunner patented golf shirts and knit windbreakers for ladies. All territories. For golf shops and country clubs. Dunner of New York, 137 5th Ave., New York City.

For better and more economical golf ball washing **HENRY Golf Ball WASHER**

- Will dress up any course • Dirty water will not splash • Heavy gauge steel • **NEW** improved insert in rubber squeegee • Oil impregnated bearings • No brushes to rot.

A. C. Schendel, Distributor

Box 92, Waukesha 5, Wisconsin

Dealers in all principal cities



**BALL
WASHER**

\$14.75

Prices F.O.B.
Waukesha, Wis.

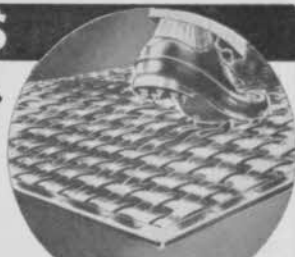
SAVE CLUB HOUSE FLOORS

WITH SPIKE-RESISTANT PNEU-MAT RUNNERS

Protect your floors from spike holes with rugged Pneu-Mat Runners. Absolutely spike-resistant, they provide a comfortable walking surface—improve the appearance of your club house.

Woven of rubber-impregnated fabric, Pneu-Mat Runners are tougher than rubber runners. Reversible for double wear.

Money Back Trial Offer: Order a trial section. Test it on an area which gets especially hard wear. Money back if not satisfied.



STANDARD WIDTHS

20" - 24" - 30"
36" - 42" - 48"

Trial Section

24" x 60"
\$12.50 postpaid

Write today for illustrated folder

SUPERIOR RUBBER MFG. CO., INC. • 145 Woodland Ave., Westwood, N. J.

Distributors Wanted — Manufacturer with established name wants distributors to handle complete line of putters. Address Ad 706, c/o

Salesman Wanted — To sell direct to Golf Shops — a complete line of putters made by a well established manufacturer. Address Ad 707, c/o Golfdom.

Private golf club in the Chicago area is interested in interviewing a golf course superintendent. We would prefer someone with a good technical background and with good practical experience. Address Ad 708, c/o Golfdom.

Sales Representative wanted to sell complete line of Organic Fertilizers, Michigan Peat Moss and Lawn Seeds to Golf Courses, Schools and Colleges, etc. Commission basis. Write (in confidence) giving background. Ad No. 709, c/o Golfdom.

MISCELLANEOUS

FOR SALE — GOLF COURSE, RESORT, CLUB-HOUSE, DINING ROOM, LIQUOR LICENSE, LARGE HOME, EIGHT COTTAGES, ON LAKE NORTHERN WISCONSIN. PART OR WHOLE. D. ZOESCH, 4231 W. BERNHARD PL., MILWAUKEE, WISCONSIN.

SOILAIRE TURF MACHINES, 8 FOOT MODELS, SLIGHTLY USED BY CONTRACTOR ON ONE RENOVATING JOB. HALF PRICE. BOB ARNOLD EQUIPMENT CORP., MILLINGTON, N. J.

FOR SALE, NINE HOLE, SAND GREEN COURSE, LARGE POTENTIAL. FOR FULL DETAILS WRITE BOX 36, TERRACE, B. C., CANADA.

Used Golf Balls for Sale: Good for range or play — medium grade 15 cents each, best grade 25 cents. Brewer Golf Shop, 280 DeBalivere, St. Louis 12, Mo.

WANTED FOR CASH

Old Golf Balls retrieved from ponds, or out of bounds, on or around Golf Courses.

Cuts and bumped36 per doz.
Off brands & synthetic, or slightly nicked 1.56 per doz.
Round & Perfect 1.25 brands for

refinishing 2.40 per doz.
Like new top grade for rewashing 3.60 per doz.

NOTE—Golf range balls, picked over lots, and cut deep into the rubber types wanted, but not acceptable at above figures.

Send for shipping tags and instructions.

GOLF BALLS FOR RETAIL SALES ONLY

Reprocessed with 100% brand new Baleta cover, new snow white enamel, imprinted with distance, trade name and number. We accept your mixed compression cores and return only high compression (no shrinkage) at no additional charge. A fast seller at 50c to 65c each. Bulk—your cost on exchange \$2.65 per dozen.

Also nation-wide distributors of the best in golf range & miniature course equipment—Balls, clubs, mats, and etc. Send for catalog.

NORTHERN GOLF BALL CO.

2350 W. Roscoe Street Chicago 18, Illinois

For Sale: Electric Caddie Carts — 4 Worthington Champ Carts \$300.00 each; 2 Victors \$400.00 each. All in first class condition. All with new batteries. F.O.B. Cromwell, Indiana. Tom Spencer, Cromwell, Indiana.

Sale: Reconditioned Champ Elec. Golf Carts, like new, 200 Amp. VITALIZED batteries, chargers, \$510.00 each **FOB LAWN & GOLF SUPPLY COMPANY,** 5264 Beach Boulevard, Jacksonville 11, Fla.

SPECIAL: ENGLISH LAWN MOWER, FINEST BUILT, ESPECIALLY FOR GREENS CARE WITH ROLLER AND GRASS CATCHER. \$34.95 LIST, LIMITED QUANTITY \$14.95. AL MIDDLEMAN, 1934 BROADWAY, NYC.

GOOD ROADS MULCH-VAC SWEEPER

ideal
for
golf
courses



....Eliminates Leaf Removal and Disposal!

Towed-Type. Cleans 6' 5" width at one pass—25 to 30 acres per 8 hour day. Picks up leaves by vacuum suction, thoroughly mulches and spreads them evenly over the ground. Leaf mulch disintegrates to a natural fertilizer. Does the job in hours that takes many men days.

Also available: Small self-propelled "walkie" model for obstructed areas or club-house grounds. For further information write:

GOOD ROADS MACHINERY CORPORATION • MINERVA, OHIO

GOLFDOM • ADVERTISERS INDEX

BPA

JULY, 1958

NBPA

Aeshnet Process Sales Co.	2nd Cover, 37
Aero-Thatch, Inc.	17
American Agricultural Chemical Co., The	16
Aquatrols Corporation	24
Armacost, Rowland	84
Atwater-Strong Company	68

Baldock, Bob	82
Bell & Son, William P.	83
Buckner Manufacturing Co.	14

Carlson Products Corporation	14
Cast Iron Pipe Research Association	5
Chamberlain Metal Products	56
Cleary Corporation, W. A.	15
Colby Pioneer Peat Co.	74
Container Development Corporation	12
Cornish, Geoffrey S.	84
Curtis Automotive Devices, Inc.	79

D B A Products Company, Inc.	80
Davis, Inc., George A.	22
Delaware Valley Golf Association	84
Des Moines Glove & Mfg. Co.	22
Double Rotary Sprinkler Co.	64
Dues Commercial Equipment, Inc.	32, 33
Dunlop Tire & Rubber Corp.	46, 47
duPont de Nemours & Co., Inc., E. I.	72, 73
Tersan Section	
Uramite Section	

Eastern Golf Company	78
---------------------------	----

Fate-Root-Heath Company, The	4
Fawick Flexi-Grip Company	55

Gill, David	83
Godwin & Son, Hiram F.	24
Golfcraft, Inc.	43
Goode Roads Machinery Corp.	88
Gordon, William F. & David W.	80
Greenway Irrigation Systems	20

H. & R. Manufacturing Co.	81
Hagen Division, Walter	31
Harris, Robert Bruen	82
Harrison, James G.	83
Highland Car Company	11
Hillierich & Bradsby Co.	39
Hyper-Humus Company	76

Johns-Manville Corporation	28
Jones Mower & Equipment Co.	87
Jones Company, Phillip	75
Jones, Robert Trent	82

Keene Adservices	77
Kirsch Card Service	80

Laher Spring & Tire Corp.	7
Langford, William B.	84
Linck Company, O. E.	21
Link's Nursery, Inc.	4
Lynde & Rowsey	77
Lyons Turfgrass Farms, Bill	70

MacGregor Company, The	51
Maddox Construction Co.	83
Mallinckrodt Chemical Works	41
Manufacturer's Specialty Co.	79
Maxwell, J. Press	81
McKay, Alexander G.	84
McLaughlin & Son Hugh J.	11
Merchants Tire Company	78
Millburn Peat Company	76
Miller Golf Printing Co.	77
Mitchell, William F.	82
Modern Manufacturing Co.	18
Motor Appliance Corporation	6
Murdoch Mfg. & Supply Co.	81

National Irrigation Consultants	80
National Rain Bird Sales & Eng. Corp.	18
Needlecraft Manufacturing Co.	8

Old Orchard Turf Nurseries	74
Oregon Chewing Fescue & Creeping Red Fescue Commission	65

Packard & Wadsworth	84
Par Aide Products Co.	70
Par Tube	8
Phillips, Inc., F. C.	67
Plymouth Golf Ball Company	45
Professional Golf Co. of America	84
Purdy, Hal	

R. & D. Associates	76
Reachmore Company	78
Ryan Landscaping & Equipment Co.	23

Schendel, A. C.	87
Sears, Roebuck & Co.	9
Sewerage Commission, The	12
Simon, Inc., E. & H.	76
Skinner Irrigation Co., The	20
Smith, Kenneth	75
Spaulding & Bros., Inc., A. G.	35
Sports Awards	79
Sports International	62
Standard Manufacturing Co.	6
Stewart, Charles E.	84
Superior Rubber Mfg. Co.	88

Taylor Jr., Associates, Horace F.	66
Tero Manufacturing Corp.	61
Triangle Plastic Pipe Division	13
Trophy & Medal Shop	75
True Temper Corporation	71
Tull, Alfred H.	81

United States Rubber Co.	4th Cover
Unjohn Company, The	49

Vestal-Menroe Printing Co.	79
---------------------------------	----

Wayne Golf Ball Company	77
West Point Products Corp.	25
Willard Batteries	10
Wilson Sporting Goods Co.	3rd Cover
Wittek Golf Range Supply Co.	79
Wood Bros. Manufacturing Co.	16
Worthington Mower Company	63
Wyandotte Chemicals Corp.	26, 27

Yardley Plastics Co.	19
---------------------------	----

GOLFDOM, The Business Journal of Golf Published monthly, except November and December. Subscription rate—\$2.00 per year, Canadian and Foreign \$2.50. Joe Graffis Publisher; Herb Graffis Editor; Joe E. Doan Managing Editor; Joe Graffis, Jr. Adv. Mgr.

Publication Offices: 407 So. Dearborn St., Chicago 5; Phone HARRISON 7-5941. Eastern Representatives—Albro Gaylor, 200 4th Ave., New York 3; Phone AL 4-0275

CONTENTS

<i>Swinging Around Golf</i>	Herb Graffis	3
<i>Discuss Superintendent's Value to Club</i>		29
<i>Red Gives Variety, Gets Volume</i>	Herb Graffis	34
<i>Schedule Third PGA Assistants' School</i>		38
<i>Chlorotic Grass Responds to Iron Sulphate</i>	O. J. Noer	40
<i>Two-Week Limit on Trade-In Clubs</i>	Jackson Bradley	42
<i>Water! Feast or Famine in West</i>	Omer Crane	48
<i>Hits Freak Shot — Not Guilty of Negligence</i>	William Jabine	50
<i>Strictly Professional</i>		52
<i>Grau's Answers</i>	Fred V. Grau	54
<i>Manufacturing News</i>		76

Swinging Around Golf

(Continued from page 70)

invitation tournament at Green Hills G&CC, Millbrae, Calif. . . . Jack Redmond back after another Round-the-World-in-80-shots trip . . . Robert Bruce Harris architect of new semi-private course at Downers Grove, Ill., that ought to help ease situation caused when Illinois wandering toll road took nine holes off Maplecrest and put Indian Head CC out of business.

Harold Williams and Tommy Nicol building an 18-hole semi-private course of their own at Tuscaloosa, Ala. . . . They're also building a 9-hole course for the University of Alabama that they expect will be in play in spring next year . . . The "Reluctant Golfer" instruction record made with and under the direction of Joe Novak and produced by Rex Productions of Los Angeles, sold 11,800 records the first week it was put on the market . . . Hope and Crosby boosted it.

George Low still making the funny talks . . . Fellow was telling another curb gossip "I heard Snead isn't going to be here." . . . George said "He's here already. There's his car" . . . and Low pointed to a Brink's truck . . . Gordon Watson, pres., Wisconsin PGA and pro at Brynwood CC (Milwaukee dist.) is author of an interesting article, "Learn Early, Learn Right," in the Sunday golf section that Billy Sixty gets up for the Milwaukee Journal . . . Billy polled Wisconsin pros on their choice for National Open winner . . . None of them guessed Tommy Bolt.

Harold and Mary Sargent are working for nothing for the PGA so their pretty daughter Diane probably figured she'd better get a sum-

mer job and help Pop and Mom . . . Harold's heavy correspondence as PGA pres. is handled, to a considerable extent, by Mary as his secretary . . . Diane, who is East Lake and Atlanta City champion, got herself a job as switchboard operator at East Lake right after she graduated from high school . . . She enters University of Georgia this fall . . . She will study journalism.

Robert Trent Jones engaged as consulting architect by TWA . . . The airline is planning to have courses as part of its hotel building program in Central and South America and the Caribbean . . . Jones is designing a course for Brazil, the new city being built to be the capital of Brazil . . . He also has designed a new 9 for Ithanga GC at Rio de Janeiro and another 18 to be built in Rio . . . The pros can thank Jones for selling Laurance Rockefeller on the idea of having a tournament at the superb Dorado course Jones built for Rockefeller at San Juan . . . Eldorado CC at Palm Springs, Cal., that has Robt. McCulloch, J. Ross Clark II, Ronald Williams, Jimmy Hines and Johnny Dawson as headmen will open Dec. 1 . . . It has 240 members signed already . . . It will be open the year around.

When you looked at Southern Hills you saw the genius of the late Perry Maxwell and the brilliant influence that has figured in the successful golf architectural career of Perry's son, Press . . . The par 4 12th at Southern Hills is hard to beat . . . It's a dogleg 465 yards for championship distance . . . There isn't a colorless par 3 hole on the course . . . Chuck Dupree, pro and Supt. Howard Denny of Meadowbrook CC, Overland Park, Kans. putting three new holes into the course.