

## Triangle Round-Robin Money Spread

John E. McAuliffe's fifth annual \$12,-000 Triangle Round Robin women's golf competition will be held at the Cavalier Yacht and CC, Virginia Beach, Va. While offering the same record total, prize money will be cut all the way down the line and eliminates the extra prize events of a year ago. McAuliffe's, pres. of the Triangle Conduit & Cable Co. revised the distribution of prize money to encourage younger players on the tour.

As a result, the six alternates who will be listed in the star group of 22 will each be assured of \$400.

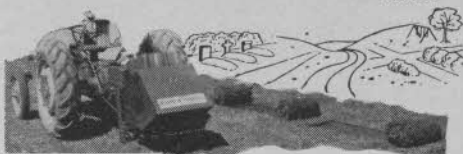
Winner of the Triangle event will be awarded \$1,500. Second prize will be worth \$1,000; third, \$800; fourth, \$650; fifth, \$550; sixth, \$525 seventh, \$500; eighth, \$475; ninth to sixteenth, \$450 each, and, next, the six alternates, \$400 apiece. Last year's prizes ranged from \$2,000 down and there were but two alternates.

Included in the remarkable host of women golfers in the 1957 Triangle will be Patty Berg, the Masters title-holder; Louise Suggs and Marlene Bauer Hagge.

# New!



## 3-G SOD-CUTTER



**Amazing Low Cost Sod-Cutter Can Cut Up to 1½ Acres a Day!**

- No walking—tractor mounted cutter raises and lowers from tractor hydraulic system.
- 18-inch stripper with 6-foot length cut-off gives you one square yard of sod.
- 18-inch cutter blade is adjustable to cut sod from ½ to 2 inches deep.
- Practically no maintenance with minimum of working parts, grease fittings—long life.

**FREE!** Descriptive literature is yours by just mailing us a postcard.

**KING & HAMILTON COMPANY**  
OTTAWA, ILLINOIS

## MAKE US PROVE IT NOTT'S ARTOX Kills Crab Grass FASTER-PERMANENTLY

NOTT'S ARTOX (SODAR®), a formulation of Di Sodium Monomethyl Arsonate, is the *guaranteed specific contact* killer for smooth and hairy crab grass.

But don't take our word for it. Put us to the test at our expense. We want you to try ARTOX. You'll be AMAZED and thank us for the results. For FREE sample attach coupon to your club letterhead and mail. Send it today for turf free from crab grass.

- 1 — Kills CRAB GRASS
- 2 — Leaves Permanent Grass Unharmed
- 3 — Lower In Cost
- 4 — Completely Water Soluble

ARTOX and other NOTT PRODUCTS available through your Horticultural Supply House.

\*Trade Mark pending, permission granted by applicant.

**NOTT MANUFACTURING CO., INC.**  
Mount Vernon, N. Y.



NOTT'S ARTOX "Special" has been successfully combined with 2,4-D, a specific for troublesome broadleaf weeds, silver crab and smooth and hairy crab grass.

**FREE!** Send me free sample and further information on ARTOX.

Have a field man call on me to help solve my turf problems.

Name \_\_\_\_\_

Club \_\_\_\_\_

Street & No. \_\_\_\_\_

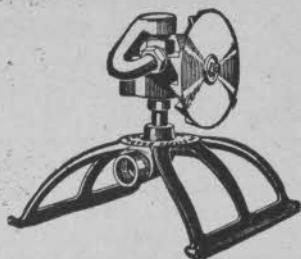
City \_\_\_\_\_ State \_\_\_\_\_

## Throws More Water Farther —yet Saves Water!

Only Double Rotary has the single, rotating line of water which allows all the water to soak in before the line passes over again. Throws farther because all the pressure is back of the single line; saves water because there's no run-off; no puddling; little evaporation.

Fully Guaranteed

Parts and  
Service  
Available



**DOUBLE ROTARY** Right  
as  
**SPRINKLER** Rain

**Greater Distance — Better Coverage**  
**Positive Action — Longer Life**

### MODEL H

Double Spout (left)—for Medium to High Pressures. Covers up to a 90-foot diameter; less with a turn of the faucet. Approximately 4½ gallons per minute at 40 lbs.;  
6½ at 75 lbs. .... \$19.50

Single Spout (above)—for Low, Medium or High Pressures. Covers up to an  
80-foot diameter ..... \$18.75

Identical except for spout assemblies  
which are interchangeable.

**DOUBLE ROTARY SPRINKLER CO.**

422 Admiral Blvd.

Kansas City 6, Mo.

## Wetting Agents Increase Water's Efficiency

(Continued from page 80)

after treatment with the wetting agent.

Similarly, in the nursery and greenhouse fields we have reports on a greater growth of rooted cutting in treated soil, and a denser growth on balled and burlapped azaleas that were treated in mulch-  
ed frames.

Next, we have information from Prof. de Werth of Texas A & M on the encouragement of deeper roots for seedlings. These tests were made in the greenhouse and were conducted in flats. Seeds were germinated in a ¼-in. layer of sphagnum moss over a layer of soil. Where the wetting agent was used the moss could not be separated from the soil showing good deep root development into the soil layer. Without the wetting agent, the moss separated from the soil showing poor root development.

(1) There are vast differences in results that can be obtained with ionic and non-ionic types of wetting agents.

(2) Non-ionic wetting agents accomplish

one vital thing in water management — namely, they make water more effective.

(3) The potential uses of wetting agents are as unlimited as your use of water in daily turf maintenance.

(4) The use of wetting agents not only eliminates many problems in turf-water management, but also produces a better turf.

(5) The use of non-ionic wetting agents insures against over-wetness so often caused by trying to water a hard-to-wet area, and thereby overwatering an adjacent area.

## Obitz Honored By UVS

At the national convention of the United Voluntary Services (Swing Clubs) held in Chicago, Harry Obitz, pro at Fred Waring's Shawnee (Pa.) CC, was awarded a plaque for distinguished service in extension of golf activities at veterans' hospitals and military installations.

Obitz is chmn. of the PGA committee working with the UVS Swing Club women. Mrs. Helen Lengfeld, UVS pres., made the award.

## Grau's Answers

(Continued from page 65)

A. Clover in bent greens may be due to several causes. First, the bent that you have may not be well adapted to your soils or climate. If you have Seaside Bent I would expect clover as one of the natural consequences because Seaside Bent has a number of weak strains in it that permit clover to invade. Also, some of the strains in Seaside are very susceptible to disease and it is, first, the disease that weakens the grass and allows clover to invade.

The trouble may be in your soil conditions. If the soil is tight and dense and drains with difficulty it is possible that excess water that must be applied to keep the greens playable favors the clover rather than the bent. Clover is notoriously shallow rooted and can survive in a very shallow layer of soil if adequately supplied with nutrients and moisture. Getting rid of the clover can be done with chemicals but I wouldn't advise it until the causes for clover invading have been discovered and corrected.

One of the best ways to discourage clover is to "just grow grass." This is done by observing all basic principles of bentgrass management from the ground up and that begins with good drainage, good aeration, the adapted strain of bentgrass suited to the area, excellent management practices and adequate fertilization. Clover makes its own nitrogen and it can be discouraged by repeated applications of nitrogen fertilizers. In fact, this is one of the best ways to get rid of clover if all the other factors are favorable.

If you have a weak strain of bent it would be inadvisable to use chemicals for the control of clover because they could also discourage the bent.

Before I go further in making suggestions, I think it would be most helpful if you would sit down at your earliest convenience and give me an outline of everything we have discussed here in relation to what you are doing on your course — the kind of grass, management, type of soil, topdressing practices, watering, and everything else that you can think of. Then I think we can develop a good, sound clover control program for your conditions.

### Disappointing Mixture

Q. I am the supt. at a club in Pennsylvania, at an 18-hole public course. I am very much disappointed with the bent mixture I have been using:  $\frac{1}{3}$  Seaside Creeping Bent,  $\frac{1}{3}$  Astoria and  $\frac{1}{3}$  Colonial Bent. Would you please inform me what kind of grass to use on a 6,000 sq. ft. putting green, which has a base of crushed sand rock, 3 ins. of topsoil and 10 ins. prepared soil of 1-sand, 1-humus and 1-topsoil. (Pa.)

A. The bentgrass mixture which you have been using is not designed to give the highest quality putting greens. I strongly urge, if you

**CLEARY  
PRODUCTS**

*for*  
**BETTER  
TURF**

**TURF-TONIC,  
PLANTONIC**  
and  
**SUPER PLANTONIC**  
CONTAIN  
**GIBBERELIC ACID**

Amazing Growth Stimulator expertly blended with Iron Chelate, Copper Chelate, Molybdates, Manganese Chelate, Cobalt Chelate, Urea, Phosphate, Potash

One pound of  
**TURF-TONIC**  
treats 2,000 sq. ft. for \$1.25

One pound of  
**PLANTONIC**  
treats 15,000 sq. ft. for \$8.50

TURF-TONIC contains gibberellic acid 30 p.p.m. and is expertly formulated to obtain optimum stimulation of grass and to supply the necessary elements to prevent chlorosis or yellowing of the grass as the result of stimulation. Use at the rate of one pound Turf-Tonic in 10 gallons of water to 2,000 sq. ft. on tees, greens, fairways, and other large areas.

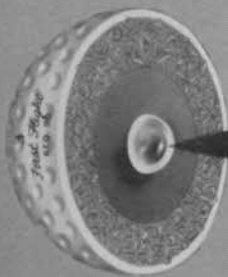
PLANTONIC contains gibberellic acid 300 p.p.m. and is formulated for plants. It is especially useful in eliminating shock accompanying transplanting. It often advances flowering. Plantonic, as a rule, will quickly stimulate non-woody plants. Woody plants, by their complex structure, require considerably longer treatment. Plantonic can be used on grass effectively, but Turf-Tonic is recommended as a more balanced formula for grass.

SUPER PLANTONIC contains Gibberellic acid 2,000 p.p.m.

**W. A. CLEARY CORP.**  
NEW BRUNSWICK, N. J.

# REVOLUTIONARY

## POWER CENTER



# First Flight

## GOLF BALLS

### LOADED WITH POWER

in three registered compressions

**SOLD ONLY  
IN PRO SHOPS**

**PROFESSIONAL GOLF CO. OF AMERICA, INC.**

CHATTANOOGA, TENNESSEE

Originators of Registered Swing Weight Golf Clubs

intend to continue using seed, to get Penn-cross Creeping Bent seed and sow this at the rate of one pound to 1,000 sq. ft. This is plenty of seed and, even though the price is high, \$10-\$12 per lb., you will find it economical in the long run.

If you decide to go to stolons, I suggest Pennlu creeping bent which is available from several nurseries not far from you. This is a vigorous creeping bent that produces an excellent putting surface. But being vigorous it tends to become matted and will require more frequent and vigorous brushing, raking and combing to keep the putting surface free of fluffiness.

I am not quite sure, from your description, where the 3-ins. of topsoil fits into the picture. The 3-ins. of topsoil ought to be incorporated into your entire depth of prepared soil which, as you say is a 1-1-1 mixture. The trend today in the building of greens is to increase coarse sand content to provide more perfect internal drainage and to develop a deeper root system. I suggest that you increase the proportion of coarse sand to at least 2 parts so that you will have a 2 part sand, 1 part humus and 1 part topsoil.

Naturally, one of the most important factors in the development of a putting green where you are using a good bentgrass like Penn-cross or Pennlu stolons is fertilization. By actually fertilizing the seed bed before planting you will develop a putting surface much more rapidly and one that will beat out the weeds before they have a chance to get started. I particularly suggest the use of a complete fertilizer containing Urea-form. It will give you a more long-lasting effect and bring the grass to maturity without need for additional surface applications of fertilizer on young, tender developing turf.

### Where Was The Mistake

**Q.** Our soil mixture for the putting green is two parts peat, 2 parts black dirt and one part fine sand. This mixture is 8 ins. thick

over a gravel base. Drainage is good. On Apr. 26, 1956 we used 12-12-12 fertilizer at 50 lbs. per 1,000. Watered thoroughly. On Apr. 29 we planted C-19 stolons at 10 bu. per 1,000. Rolled stolons and spread topdressing about  $\frac{1}{8}$  in. to  $\frac{3}{16}$  in. deep. Topdressing was 1 part peat, 1 part black dirt, 2 parts fine sand. Watered green often the first two weeks, after which we watered every night about sundown.

A natural organic was used every two to three weeks at 20 lbs per 1,000 and topdressing applied after each application of fertilizer. Grass grew well until the first of July, then slowed up. By early Aug. the green was very poor. Aug. 13 the green was sprayed with fungicide and a repeat spray seven days later. We also started removing the dew early in the morning. The green soon showed signs of improvement and by mid-Sept. was doing satisfactorily. As we intend to plant nine greens soon, the question arises: what mistakes did we make? Was the green diseased — if so, what caused it? With the slow seepage of water through the fine sand, did we water too much? We would appreciate your expert advice as to what caused our trouble. (Minn.)

**A.** In the planting of your new greens, I make these suggestions for changes. First the soil mixture 8-10 ins. deep over a gravel base would be better if it were composed of 3 parts coarse sand, 1 part black dirt and 1 part peat. This will give you much improved drainage through the soil into the gravel base. It will give better aeration and actually the green will not have to be watered any more often. In fact, it may not have to be watered nearly as often.

I find no fault with the 12-12-12 in the seedbed — the rate is all right, and the stolons you used are all right. I sometimes feel that 10 bu. to 1,000 is a little too heavy, but I won't quarrel about that. Your topdressing should be precisely the same as the soil in the green. There should be no change here.

I believe your major difficulty was caused —

# SELL PAR TUBES NOW! — WHY WAIT?

Par Tube Protects Your Grips The Full Bag Length



PAR TUBES As Used In Individual Compartment or Slet Type Bags

The demand is terrific and the profits are quick. PAR TUBES superior construction proves them tops in the field. A *Must* for any golfer who wants to protect his grips the full bag length and obtain a friction-proof bag with an individual compartment for each club. PAR TUBES are dropped into oval or round type bags allowing a numerical arrangement of clubs. PAR TUBES fit into and strengthen individual compartment bags, allowing full free use of EVERY compartment.

PAR TUBES are Strong — Moistureproof — They are endorsed by Pros and Amateurs alike as a great idea for keeping grips in fine condition and protecting clubs against marring by careless handling.

Packed in cartons of 42 and 144

Contact Your Local Distributor or

## PAR TUBE

5710 W. DAKIN ST.,  
CHICAGO 34, ILLINOIS



Oval or Round Type Bags

(1) by the slow percolation of water through the fine sandy material; (2) the disease was caused by overwatering and (3) the influence of perhaps too much of the natural organic fertilizer that was applied a little too frequently during the hot part of the season. By all means make one application of a natural organic and then follow it in three weeks with an application of Urea-form fertilizer at 10 lbs. to 1,000 sq. ft. This should carry you quite well through the heat of the summer. If the growth should happen to slow down, another application of natural organic could give it a boost and then, in early Sept. another application of Urea-form fertilizer at 10 lbs. per 1,000 sq. ft. This should pretty well cover you for the entire growing season.

The treatment with fungicides is definitely recommended whenever disease appears on the green. The excess peat in the soil holding the moisture could have a lot to do with encouraging disease. I greatly prefer a soil that is more on the sandy side, using coarse sand instead of fine, so that the water drains through freely, thereby developing a deep root system and a more healthy turf.

If you would care to send me a small sample of ingredients you plan to use in making up your new mixture, I will be glad to examine the materials and give you a reply. A cupful of each, packed in polyethylene, packaged and mailed to Box 177, College Park, Md., will reach me without delay. You might send it parcel post, special handling.

## Metropolitan Golf Association Publishes Caddie Manual

Metropolitan Golf Assn., 40 E. 38th st., New York 16, N. Y., which published a caddie manual for club committees in 1956, has come up with a sequel, "A

Par Tube Also

Manufactures

This Useful Product

## PAR TUBE Plastic



ROLLED  
PROTECTIVE  
EDGE

A good durable tube for those who prefer plastic. Packed in cartons of 42 only.

Manual of Caddie Instruction." The booklet can be obtained from Metropolitan at a cost of \$3.00 for 10 copies.

### Advantages Cited

In the foreword, MGA points out some of the advantages of caddying. The booklet advises the youngsters of types of caddies to avoid and discusses the game's etiquette. Another chapter brings the boys up-to-date on playing rules with which they should be familiar and a glossary of golfing terms also is included. There is a section describing the use of various clubs and another telling of the care and handling of players. Other chapters instruct the caddies in first aid, tell them how to go about carrying for players who use golf cars and give some tips on what to do during an electrical storm.

Tom Paprocki, Associated Press artist, illustrated the Metropolitan booklet.



**NEW . . . A FREE**  
monthly newsletter for professional turf growers and home owners.

Keep abreast of the growing problems and developments in the turf world.

Write for your free subscription today.



**NITROFORM**  
Agricultural Chemicals, Inc.  
DEPT. B, 92 SUNNYSIDE AVENUE  
WOONSOCKET, R. I.

## Resourceful Grounds Staff Makes Big Savings

By ED MOREY

Morey's G & C, Milford, Mich.

Golf club accounting statements rarely show the great increase in the operating value of the plant that is made by the maintenance staff in addition to its work of keeping the existing course in good condition.

As builder, owner and operator of a 27-hole semi-private course at Milford, Mich., I got a good perspective of a supt's achievements when he has to handle a building or rebuilding job while maintaining a course. The resourcefulness of some of these men is amazing.

Golf course design, construction and maintenance are fields in which practically the impossible is done, and done

often. We had an instance of achieving the unbelievable when we were doing our own building. Using some of our old parts, buying a good reconditioned pump, and using underground iron pipe from 6 ins. to 1 1/4 ins. and our own staff, we put in a green, fairway and tee watering system for around \$6,000 on which we had received quotations as high as \$83,840.

I, of course, am not saying that the watering system we installed is a counterpart of the one that could have been installed for \$83,840. But our system will do the work we want done until we have \$83,840 or whatever other amount is needed for a fine new system. Our supt. and his staff did an amazing job in adding value to our course.

## Big Turnout for Canadian Turfgrass Conference

The seventh annual turfgrass conference sponsored by the green section of the Royal Canadian Golf Assn. and held at Ontario Agricultural College in Guelph late in March, attracted a larger attendance than any previous meeting. Leading turf authorities from both Canada and the U.S. were principal speakers. Well over 100 supts. and representatives of seed, fertilizer and equipment companies were on hand for the two-day conference.

Speakers included James R. Watson of Toro Mfg. Corp., Minneapolis; James Tyson, Michigan State College; H. A. Luscombe of the Canadian federal park commission; D. C. Hamilton of the Ontario Agricultural College's horticulture dept.; H. B. Musser, Pennsylvania State University; O. J. Noer, Milwaukee Sewerage Commission; and M. E. Peart, also of OAC's horticulture dept.

## Laugh and Learn

with



## Golf's Greatest Show

Indoor & Outdoor Shows  
For Booking Details Write:

**JOE KIRKWOOD**

7059 W. Addison St.

Chicago 34, Ill.

SAVE  
CLUB HOUSE  
FLOORS

with  
spike-resistant  
pneu-mat runners



Protect your floors from spike holes with rugged Pneu-Mat Runners. Absolutely spike-resistant, they provide a comfortable walking surface — improve the appearance of your club house.

Woven of rubber-impregnated fabric, Pneu-Mat Runners are tougher than rubber runners. Reversible for double wear.

**MONEY BACK TRIAL OFFER:**

Order a trial section. Test it on an area which gets especially hard wear. Money back if not satisfied.

**Standard Widths**

20"-24"-30"

36"-42"-48"

**Trial Sections**

24" x 60" \$10.00

20" x 24" \$4.00

Write today for illustrated folder.

SUPERIOR RUBBER MFG. CO., INC., 145 Woodland Ave., Westwood, N. J.

### USGA Women's Committee Issues Revised Booklet

Women's Committee of USGA has issued a revised edition of its booklet for the guidance of women's organizations entitled, "The Conduct of Women's Golf." This edition supersedes the edition dated February, 1956.

All material relating to the organization of a women's golf committee and to the duties of the secy., treas., tournament, rules, handicap, trophy chmn., team captain and chmn. of junior golf has been either extensively revised and expanded or replaced in the new edition.

There has been no change in substance, however, in the recommended handicap and course rating systems for women. USGA Women's Committee recommends that women's handicaps be based upon the five best scores in relation to course rating or par made under USGA Rules of Golf within the current and last previous playing seasons or calendar years, and upon USGA course rating or par.

Copies of the revised edition are being distributed to USGA member clubs and to women's associations. Additional copies may be obtained from the USGA, 40 E. 38th Street, New York 16, N. Y., at 25 cents per copy.

### Central Plains Field Day

1957 Field Day of the Central Plains Turfgrass Foundation has been scheduled for June 10 in Boystown, Neb. Ross McCausland, Sr., is pres. of Central Plains; Chester Mendenhall is vp; and Ray A. Keen, Dept. of Horticulture, Kansas State College, Manhattan, is secy-treas.

There isn't a professional who merits the title and the job who can afford to neglect recruiting, training, supervision and encouragement of the caddies at his club even if the club, pro and caddies are blessed with the services of a fine caddiemaster.

Leo Fraser, Atlantic City (N.J.) CC

Every golfer needs it!

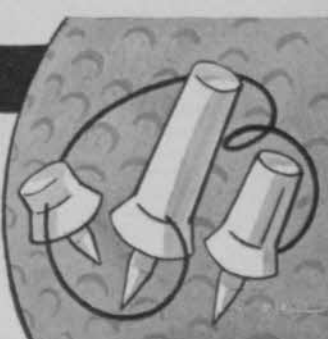
Here it is at last!

**ARNOLD'S** Nylon Tee

Set of three self-straightening tees on a string . . . entirely of tough nylon. Three heights  $\frac{1}{2}$ " to  $1\frac{1}{2}$ "—use one and anchor with one of the others—assure consistent ball height, promote consistent game.

- TOP QUALITY, TROUBLE-FREE
- PROMOTES ADDITIONAL SALES
- ATTRACTIVE, IMPULSE SELLER
- RETAILS 25c PER SET OF 3

IDEAL FOR EVERY PRO SHOP—ORDER YOUR SUPPLY NOW!



**ARNOLD Mfg. Co. 3500 6th Ave. Des Moines, Iowa**

## **GRIP** for better goif and longer profits



Carnegie's GRIP, a fast drying liquid, is applied to the hands to afford a better grip. Attractive, non-breakable bottle easily fits in pocket or purse. Beautiful 24-bottle display makes 50c profit on each bottle for you.

Write for free sample and prices.

**CARNEGIE CHEMICAL MFG. CORP.**  
6363 Wilshire Blvd., Los Angeles 48

## **GOLF RANGES**

### **MINIATURE GOLF COURSES**

We Have a Complete Line  
of Supplies

Write for prices

**EASTERN GOLF CO.**

Dept. A

2537 BOSTON RD.  
BRONX 67, N. Y.

## **What's New**

### ■ Products and Personalities

#### **O. M. Scott Markets Improved Turf Builder**

O. M. Scott & Sons, Marysville, O. is marketing a newly developed Turf Builder that is said to be superior to the product the company has been selling for the last 29 years. Packed in from 1 to 50-lb. bags, New Turf Builder is complete in nitrogen, phosphorus and potash and has slow release and mild action qualities. It is estimated that the fertilizer can be applied six times a year at a cost of about 1/2 cent a sq. ft.

#### **MacGregor Puts Click In Women's Tourney Ball**

MacGregor is making available a new Tourney golf ball compressed especially for women's play. The regular high-compression Tourney is packaged in a gold box. The new women's Tourney is packaged in a bright silver box.

This new ball carries a lower compression to enable women to hit it with the same "click" and "feel" as harder-hitting men golfers get from a regular golf ball. The women's Tourney is available through all pro shops.



#### **Pott Signs with Spalding**

Johnny Pott, 21-year old Louisiana pro, has been signed as a consultant by A. G. Spalding & Bros., Inc. Son of a one-time pro, Ben, Johnny was a top collegiate golfer two years ago and won or was runner-up in several amateur tournaments last year. In 1955 Pott finished as low amateur in the Baton Rouge Open, four strokes off the winner's pace. He attended Louisiana State University. In the recent Derby Open at Louisville, Pott made a very creditable showing.

#### **Wood Bros. Now Marketing New Rotary Cutters**

Wood Bros. Manufacturing Co., Oregon, Ill., is now producing its latest models of rotary cutters, a line of 5-ft. machines that are



Wood's Model M60 hitch

ideal for all mowing and shredding jobs. They are equipped with free swinging, heat treated steel blades, needle bearing 30 hp universal joints and 40 hp Timken and New Departure bearing equipped gear boxes. The cutters have a slip clutch between power take-off shaft and gear box to absorb shock loads.

Cutting height is adjustable from ground level to 14 ins. Pull Model 60 has a 47-in. wheel tread with wheels behind and a 70-in. tread with wheels at side. Model M60 hitch is of three-point design and the tail wheel is Timken bearing equipped with 8-in. non-pneumatic tire. Literature with information and specifications on the 60 and M60 can be obtained by writing the Wood company.



## GOLF BALLS FOR PROS ONLY

ALEX CAMPBELL, high compression, liquid center  
ALEX DUNCAN, medium compression, liquid center

EDINBURGH, low compression

The best medium priced pro line available, marked with our trade name or private brand. Balls guaranteed.

Used cut or uncut balls taken in trade or purchased.

Custom repainting of your golf balls.

Write for prices.

**HUGH J. McLAUGHLIN & SON**

Crown Point, Indiana

## Monroe FOLDING BANQUET TABLES

Direct Prices and

Discounts to

Golf Clubs,

Lodges,

Parks,

Hotels,

Churches and

All Organizations

WRITE FOR CATALOG

Manufactured By

**THE Monroe COMPANY**

12 CHURCH STREET

COLFAX, IOWA

## Heavy Demand Reported for A & C Scorecard-Box

A. & C Sales Co., 6518 Walker st., Minneapolis, reports heavy demand for its new

Scorecard Box that does away with makeshift containers for storing pencils and scorecards. The weatherproof box, stamped from steel sheeting, has compartments for men and women's scorecards and a large supply of pencils. It has a self-closing lid, is

10 x 11½ x 3 ins., finished in red and tan and is lettered to indicate contents. Welded to the underside of the box is a 2-in. pipe flange.



## 1957 Walter Hagen Catalog

The 1957 28-page Walter Hagen catalog printed in black and gold, includes numerous charts and graphs to aid pros in explaining



exclusive Hagen construction features in woods and irons. The line includes Strata-Bloc woods and Ultra-Powered irons with luxurious calf-skin grips and True-Temper shafts. Accessories also are included in the catalog.

## Autoette Sales Offices

Autoette, manufacturer of electric golf cars, has opened general sales offices at 611 S. La Brea ave., Los Angeles. Autoette is a division of Wayne Manufacturing Co., Pomona, Calif.

## ATTENTION! ALL PRO SHOPS

Increase your profits in trophies, yet give your customers more for their money.

Deal Direct with Trophy Mfr.

For Catalog and Discount Write

**CUSTOM TROPHY MFG. CO. INC.**

5017 Exposition Blvd.  
Los Angeles 16, Calif.



MODEL #777  
15" HEIGHT  
NET PRICE  
\$7.50

Trophies, Medals, Charms, Engraving

## TEEMATS

★ For the **FINEST, LONGEST-WEARING** and **MOST ECONOMIC**AL Tee Mat on the Market!  
**Nationally acclaimed by golf clubs and ranges as the best buy.**

★ SEND TODAY FOR LOW PRICES

Merchants Tire Co., 2710 Washington, St. Louis 3

## Dunlop Sales Theme: This Is Year of the Maxfli



Dunlop sales reps and company officials pose for picture during break in annual meeting.

(Seated, 1 to r): D. G. Wager, R.C.V. Mackenzie, H. E. Elden, Vincent Richards, L. D. Hartford, R. A. Burgoyne, J. F. McCann. (Second row): I. R. Chappel, Jr., H. L. May, J. P. Kane, Paul Gibbs, Howard Kinsey, O. D. Ellis, F. P. Reeser, H. S. Fahey, H. L. Horton, Jr., H. L. Ronning. (Third row): Jack Rodgers, W. A. Bearse, Joe H. Bold, George Seewagen, H. W. Hull, J. H. McCullough, Charles Papousek, E. A. Fottrell, W. W. Long, D. S. Mowatt.

"This is the year of Maxfli," is the theme that highlighted the Dunlop Tire and Rubber Corp.'s national sporting goods sales meeting held recently in Buffalo.

Vincent Richards, vp, and other top Dunlop officials told Dunlop sales reps that an unprecedented advertising campaign in 1957 and increased production facilities would make the present high interest in what Dunlop calls "the world's most popular golf ball," soar even higher.

Sales potential of Maxdri golf shoes and the Warwick ball was also stressed. Introduced last year, the Maxdri, especially designed for bad weather golfing, won wide acceptance.

Philadelphia area sales rep, Horace L. Horton, Jr., won top honors in the '56 Balanced Selling Contest. Horton received a citation from Richards and an "oscar" award at a banquet held in the Buffalo Athletic Club. Other Dunlop salesmen honored were James Kane, Howard Ronning, Jack McCullough, Elia Fottrell, Irving Chappel Jr., Joe Bold and Howard Fahey.

### Orcopel Repellent Tissue Is Convenient to Use

Orcopel repel paper, manufactured by Orchard Paper Co., 3914-24 Union blvd., St. Louis 15, Mo., only has to be wiped on the face, arms, legs, etc. for protection as long as four hours against mosquitoes, gnats, flies and chiggers. It is a chemically treated tissue as easy to use as regular cleansing tissue. Orcopel is packaged in cellophane, ten 5 x 7-in.



Richards outlines ad sales campaign.

sheets to a package and, it is claimed, will last just as long as the conventional bottle of repellent lotion.

### Beloit Uses Unique Display in Pushing Magic Crest Socks

Beloit Hosiery Co., McMinnville, Tenn., is using a unique packaging approach in connection with its new Magic Crest Pair-Pak stretch socks. The socks are merchandised in a gold and flamingo red Counter-Display unit that holds 12 pairs of individually packaged Magic Crest socks and is said to give the product plenty of "grab appeal." Magic Crest is a blend of quality wool, nylon and orlon available in white and an assortment of eight attractive shades. One size fits all sizes, 10 to 13, comfortably. The socks are said to be guaranteed washable and are shrinkage controlled.



### Shell Puts West Coast Urea Plant into Production

Shell Chemical Corporation has brought its new urea plant at Ventura, Calif., into production. The plant, the only one of its type west of the Rockies, produces high analysis nitrogen fertilizer for Pacific Coast markets.

Urea contains more nitrogen — an essential plant nutrient — than any other dry fertilizer. Shell guarantees its urea at 46 per cent nitrogen.